

Assessment

If you would like an assessment of your needs please contact the Community Care Access Team.

The Access Team is the first point of contact for adult care services in Perth and Kinross. They can put people in touch with services such as:

- *Support for carers*
- *Reablement/Care at Home services*
- *Occupational Therapy*
- *Learning Disabilities support*
- *Mental Health*
- *Drug and Alcohol Team*
- *Day Care*
- *Residential Care*
- *Community Meals*
- *Community Alarm*
- *Social Work support*
- *Self Directed support*



Will I Have to Pay?

Depending on your financial circumstances, you may be asked to pay a contribution towards the cost of your package of support. This contribution allows us to ensure services are available for those who need them in the future.

Who Decides if I Have to Pay?

A financial assessment will be carried out with you to determine how much, if anything, you will need to pay towards your services. This assessment takes account of your income and capital, and then calculates your contribution.

As part of the assessment a member of the Council's Welfare Rights Team will ensure you are receiving all the benefits which you are entitled to.

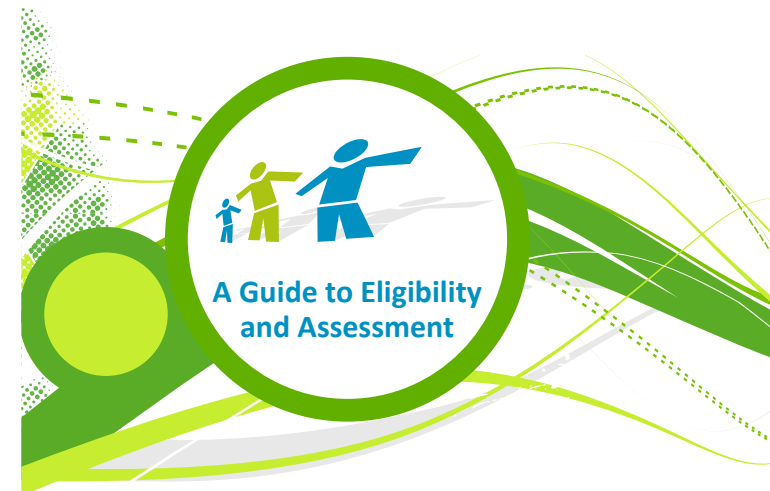
If you or someone you know would like a copy of this document in another language or format, (on occasion, only a summary of the document will be provided in translation), this can be arranged by contacting the Customer Service Centre on 01738 475000.

You can also send us a text message on 07824 498145.

All Council Services can offer a telephone translation facility.

www.pkc.gov.uk

(PKC Design Team - 2014389)



Do I Qualify for Community Care Services?





Eligibility Criteria

Our eligibility criteria are divided into levels of risk, each of which indicates a person's priority for support services.

Critical risk may include:

- major disability and/or health problems which cause life threatening harm or danger;
- unable to manage the most vital personal care or domestic tasks, causing harm or major risk to independence;
- where serious abuse or neglect has occurred, or is strongly suspected;
- carer has major physical/mental health difficulties which pose a life threatening risk of harm to themselves or others, caused by the impact of their role as a carer.

Substantial risk may include:

- a significant disability and/or health problem which causes significant risk of harm or danger;
- abuse or neglect has occurred or is strongly suspected;
- unable to manage many aspects of personal care or domestic tasks, causing a significant risk of harm or risk to independence;
- carer is unable to manage many aspects of their responsibilities.

Many people need support to enable them to continue to live independently and safely at home. In Perth and Kinross there are growing demands on care services for people of all ages with a wide range of different needs, including services to support carers.

If you, or someone you know, needs support, an assessment can be carried out by a qualified and experienced worker in line with national legislation. This is the basis on which we will work with you to decide if you are eligible for support and then agree the type and level of support needed.

As a Council we need to make sure that those in greatest need of care and support receive essential help within the funds that are available.

In Perth and Kinross we make sure that this is done in a fair way by having criteria for access to all Community Care services. These are known as eligibility criteria. The eligibility criteria used by Perth & Kinross Council is based on the national eligibility criteria issued by the Scottish Government.

Moderate risk may include:

- some health problems indicating some risk to independence and/or occasional difficulties. There is the potential to maintain health and independence with minimum support;
- unable to manage some aspects of personal care or domestic tasks, indicating some risk to independence;
- carer able to manage some aspects of their role, but a potential risk to damage to their own health has been identified.

Low risk may include:

- few health problems indicating low risk to independence. Potential to maintain health with minimum support;
- able to manage most basic aspects of personal and domestic activities, indicating little risk to independence;
- carer able to manage most aspects of their role, may have difficulty with some aspects, but with low risk to their health or health of the person they are caring for.

Our resources are targeted to those people described as being at Critical, Substantial or Moderate risk. People in these categories are in the greatest need of support to allow them to maintain their independence safely.

People whose needs fall into the Low risk group may not automatically qualify for services. However, they will receive a full assessment of their needs and expert advice on suitable alternatives.