

## PERTH AND KINROSS COUNCIL

## Lifelong Learning Committee – 1 June 2011

## STATUTORY CONSULTATION - STRALOCH PRIMARY SCHOOL

## Report by Executive Director (Education and Children's Services)

**ABSTRACT**

This Report seeks approval from the Lifelong Learning Committee for the Executive Director (Education and Children's Services) to commence formal consultations on the proposal to close Straloch Primary School. It also seeks approval of the Options Appraisal (Appendix A) and Proposal Paper (Appendix B) which are attached.

**1 RECOMMENDATIONS**

It is recommended that the Committee:

- 1.1 Approves the Options Appraisal attached as Appendix A;
- 1.2 Approves the Proposal Paper attached as Appendix B;
- 1.3 Instructs the Executive Director (Education and Children's Services) to formally consult the appropriate bodies and persons in relation to the proposal to close Straloch Primary School, in terms of the Schools (Consultation) (Scotland) Act 2010; and
- 1.4 Instructs the Executive Director (Education and Children's Services) to report back to the Committee on the outcome of these consultations in due course.

**2 BACKGROUND**

- 2.1 Education Authorities have a statutory duty in terms of the Education (Scotland) Act 1980 to make adequate and efficient provision of school education across their area. This duty applies in respect of both the current school population and future pattern of demand.

Most importantly, the Education Authority would wish to optimise the educational experience for every pupil by providing:

- a range of social and emotional experiences
- an enriched and broad learning experience
- the best possible education which meets the needs of all learners.

In addition, Councils have a statutory duty to secure best value in terms of the Local Government in Scotland Act 2003.

- 2.2 On 30 June 2010, the Council approved the report Securing the Future – Towards 2015 and Beyond (Report 10/357 refers). This report set out its continuing strategy for securing the future, aiming to support the delivery of savings through revised service delivery models and ongoing improvement activities in the Council. Education and Children's Service's Service Review Programme within this report contains a re-design project to "review the school estate".

- 2.3 Having kept the situation under review, a decision was taken by the Executive Director (Education and Children's Services) in consultation with the Convener of the Lifelong Learning Committee, that Straloch Primary School would be "mothballed" (this is a term which means that operations in a school have been suspended with pupils being zoned to another catchment area) from August 2011. The pupil roll at Straloch Primary School has continued to decline over a period of years and only 2 pupils were due to be in attendance during school session 2011/12. Both of these pupils live outwith the catchment area for Straloch Primary School.
- 2.4 The Straloch Primary School catchment area will be temporarily rezoned to Kirkmichael Primary School for the period where Straloch Primary School will be "mothballed". From the start of school session 2011/2012, 5 pupils from the Straloch Primary School catchment area will attend Kirkmichael Primary School and 4 pupils will attend Pitlochry High School (Primary) as a result of successful placing requests.
- 2.5 On 25 August 2010, the Lifelong Learning Committee approved the report Review of School Estate – Straloch Primary School (Report 10/426 refers). This report sought approval to proceed with undertaking an Options Appraisal and, if appropriate, produce a Proposal Paper containing an Educational Benefits Statement in respect of Straloch Primary School.
- 2.6 An Options Appraisal was therefore undertaken and this is attached as Appendix A.
- 2.7 The findings contained within the Options Appraisal concluded that the preferred option was to close Straloch Primary School, transfer the pupils to Kirkmichael Primary School and extend the delineated area of Kirkmichael Primary School to subsume the whole catchment area of Straloch Primary School.

### **3 PROPOSALS**

- 3.1 It is therefore proposed to formally embark upon consultations with regard to the closure of Straloch Primary School.
- 3.2 This would be undertaken in terms of the Schools (Consultation) (Scotland) Act 2010.
- 3.3 A formal Proposal Paper containing an Educational Benefits Statement has therefore been prepared for distribution. This is attached as Appendix B.
- 3.4 A public meeting will be undertaken by the Convener of the Lifelong Learning Committee and the appropriate Head of Service, supported by officers from Education and Children's Services.
- 3.5 Following this exercise, a report will be submitted to a future Lifelong Learning Committee detailing the outcome of the statutory consultation.

#### **4 CONSULTATION**

The Head of Democratic Services and Head of Legal Services have been consulted in the preparation of this report. Further consultation on this proposal will be undertaken as part of the statutory consultation exercise.

#### **5 RESOURCE IMPLICATIONS**

Any resource implications arising from the statutory consultation are likely to relate primarily to staff time and will therefore be contained within the Education and Children's Services revenue budget.

#### **6 COUNCIL CORPORATE PLAN OBJECTIVES 2009-2012**

6.1 The Council's Corporate Plan 2009-2012 lays out five objectives which provide clear strategic direction, inform decisions at a corporate and service level and shape resources allocation. They are as follows:-

- (i) A Safe, Secure and Welcoming Environment
- (ii) Healthy, Caring Communities
- (iii) A Prosperous, Sustainable and Inclusive Economy
- (iv) Educated, Responsible and Informed Citizens
- (v) Confident, Active and Inclusive Communities

This report relates to all of the above five objectives.

6.2 The report also links to the Education & Children's Services Policy Framework in respect of the following key policy area:

- Change and Improvement

#### **7 EQUALITIES IMPACT ASSESSMENT (EqIA)**

An equality impact assessment needs to be carried out for functions, policies, procedures or strategies in relation to race, gender and disability and other relevant protected characteristics. This supports the Council's legal requirement to comply with the duty to assess and consult on relevant new and existing policies.

The procedure presented in this report was considered under the Corporate Equalities Impact Assessment process (Eq1A) with the following outcome:

- i) Assessed as **not relevant** for the purposes of Eq1A.

#### **8 STRATEGIC ENVIRONMENTAL ASSESSMENT**

Strategic Environmental Assessment (SEA) is a legal requirement under the Environmental Assessment (Scotland) Act 2005 that applies to all qualifying plans, programmes and strategies, including policies (PPS).

The matters presented in this report were considered under the Environmental Assessment (Scotland) Act 2005 and no further action is required as it does not qualify as a PPS as defined by the Act and is therefore exempt. Further information on the main environmental impact of the options are detailed in Section 10 of Appendix A.

## 9 CONCLUSION

Following the preparation of a comprehensive Options Appraisal, a Proposal Paper containing an Educational Benefits Statement has been produced which will allow for informed consideration to be given to the proposal to close Straloch Primary School.

**JOHN FYFFE**  
**Executive Director (Education and Children's Services)**

**Note:** No background papers, as defined by Section 50D of the Local Government (Scotland) Act 1973 (other than any containing confidential or exempt information) were relied on to any material extent in preparing the above report.

**Contact Officer:** Alan Taylor, Ext 76225, [AMTaylor@pkc.gov.uk](mailto:AMTaylor@pkc.gov.uk)  
**Address of Service:** Pullar House, 35 Kinnoull Street, PERTH, PH1 5GD  
**Date:** 14 April 2011

Appendix A: Options Appraisal Report

Appendix B: Proposal Paper

If you or someone you know would like a copy of this document in another language or format, (on occasion only, a summary of the document will be provided in translation), this can be arranged by contacting *The Communications Manager* E-mail: [ecsgeneralenquiries@pkc.gov.uk](mailto:ecsgeneralenquiries@pkc.gov.uk)



Council Text Phone Number 01738 442573



**PERTH AND KINROSS COUNCIL**

**EDUCATION AND CHILDREN'S SERVICES**

**OPTIONS APPRAISAL REPORT**

**STRALOCH PRIMARY SCHOOL**

**11 May 2011**

## **1. Background**

Perth and Kinross Council works to enhance quality of life, make best use of public resources and ensure continuously improving services. Perth and Kinross Council's corporate strategy "Securing the Future" aims to ensure that individuals, families and communities experience the best possible outcomes from a range of services. Perth and Kinross Council has a strong identity and clear priorities which everyone works together to achieve, creating areas which are vibrant and successful; safe, secure, healthy and sustainable environments; educated, responsible and informed citizens; confident and active communities; and places where people are nurtured and supported.

This approach reflects the Single Outcome Agreement National Outcome 15 that "Our public services are high quality, continually improving, efficient and responsive to local people's needs", and the Local Outcome that "Our services will be responsive, of high quality and continually improving". This report also links with the School Estate Management Plan, approved by the Lifelong Learning Committee in November 2007, Education and Children's Services Policy Framework Maximising Resources and with the Education and Children's Services objective to develop the range and quality of learning experiences for all.

Councils, as an Education Authority, have a statutory duty in terms of the Education (Scotland) Act 1980 to make adequate and efficient provision of school education across their entire area for the current school population and future pattern of demand. The Council's School Estate Management Plan provides information on the whole of the school estate and provides information about overall objectives and future priorities within Perth and Kinross Council.

Councils also have a statutory responsibility in terms of the Local Government in Scotland Act 2003 to achieve best value. In doing so, consideration must be given to occupancy as buildings are expensive resources. To achieve best value and optimum efficiency, the minimum number of buildings is required to deliver Council services to a particular locality. The organisation of the school estate is therefore kept under regular review, including the need for school provision and other factors, such as altering catchment areas and the implementation of shared headships.

## **2. Context**

### **2.1 Blairgowrie and the Glens and Highland Wards**

Straloch Primary School is located in Blairgowrie and the Glens wards of Perth and Kinross Council and the catchment straddles both Blairgowrie and

the Glens and Highland wards. Government statistics are available at this level (Appendix 1).

## 2.2 Population

The estimated population of Scotland on 30 June 2009 was 5,194,000. The population of Scotland grew by around 25,500 in the 12 months between 1 July 2008 [5,168,500] and 30 June 2009, an increase of 0.5%.<sup>1</sup> The estimated population of Perth and Kinross grew by 1.2% between 2008 (144,180<sup>2</sup>) and 2009 (145,910<sup>3</sup>). The population for the Blairgowrie and the Glens ward was estimated at 10,689<sup>4</sup> in 2009, an increase of 0.2% since the 2008 mid year estimate (10,668<sup>5</sup>). The population of the Highland ward was estimated to be 9485<sup>4</sup> in 2009, an increase of 0.1% since the 2008 mid year estimate (9474<sup>5</sup>).

**Table 1: 2009 Mid Year Population Estimates by Age<sup>6</sup>**

	Children		Working Age		Pensionable Age	
	No	%	No	%	No	%
<b>Blairgowrie and the Glens</b>	1,575	14.73	6,011	56.24	3,103	29.03
<b>Highland</b>	1,316	13.87	5,509	58.08	2,660	28.04
<b>Perth and Kinross</b>	24,889	17.06	87,274	59.81	33,747	23.13
<b>Scotland</b>	912,340	17.57	3,248,815	62.55	1,032,845	19.89

Table 1 shows that, based on the estimated population, within Blairgowrie and the Glens and Highland wards there is a lower proportion of children<sup>7</sup> and a higher proportion of people of pensionable<sup>8</sup> age in comparison to both Perth and Kinross and Scotland. It also shows that, within Blairgowrie and the Glens, the estimated population of people of a pensionable age is almost double that of children in the ward while in Highland the estimated population of people of a pensionable age is double that of children in the ward.

<sup>1</sup> Source: [Scotland's Population 2009: The Registrar General's Annual Review of Demographic Trends 155th Edition, GROS](#) Figures in brackets – source: Mid Year Population Estimates, 2008, GROS from [Scottish Neighbourhood Statistics](#)

<sup>2</sup> Mid Year Population Estimate 2008, GROS from [Scottish Neighbourhood Statistics](#)

<sup>3</sup> Mid Year Population Estimate 2009, GROS from [Scottish Neighbourhood Statistics](#)

<sup>4</sup> Mid Year Population Estimate 2009, GROS from [Scottish Neighbourhood Statistics](#)

<sup>5</sup> Mid Year Population Estimate 2008, GROS from [Scottish Neighbourhood Statistics](#)

<sup>6</sup> Mid Year Population Estimate 2009, GROS from [Scottish Neighbourhood Statistics](#)

<sup>7</sup> GROS definition Aged 0 - 15

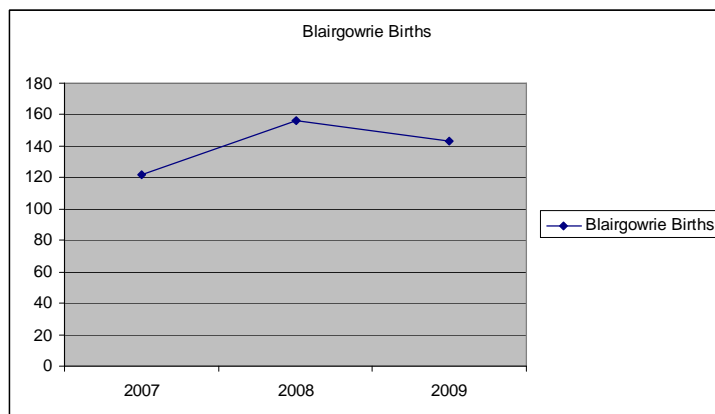
<sup>8</sup> GROS definition – males aged 65 and over, females aged 60 and over

Births in the registration district of Blairgowrie between 2007 and 2009 are given over. These figures indicate the number of births registered in the area and not necessarily births of people resident in the area.

**Births Registered within Blairgowrie Registration District**

	<b>2007</b>	<b>2008</b>	<b>2009</b>
<b>Blairgowrie</b>	122	156	142

Source: Perth and Kinross Council Registrars

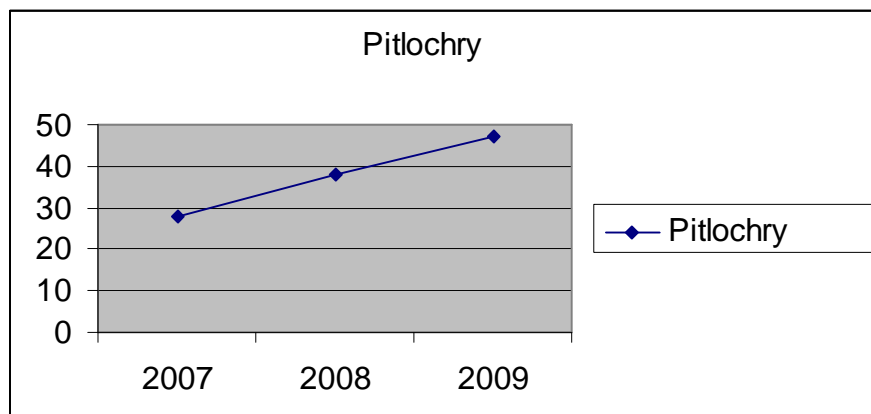


Births in the registration district of Pitlochry between 2007 and 2009 are given below. These figures indicate the number of births registered in the area and not necessarily births of people resident in the area.

**Births Registered within Pitlochry Registration District**

	<b>2007</b>	<b>2008</b>	<b>2009</b>
<b>Pitlochry</b>	28	38	47

Source: Perth and Kinross Council Registrars





Other ward level statistics are attached as Appendix 1 and reveal that:

- levels of both income and employment deprivation within Blairgowrie and the Glens are higher than average for Perth and Kinross;
- Highland Ward has a lower percentage of income and employment deprivation compared to the Perth and Kinross average; and
- Blairgowrie and the Glens has deprived areas, as defined by the Scottish Index of Multiple Deprivation, with Rattray being within the 15% most deprived areas of Scotland.

### **3. Initial appraisal and current situation**

Detailed analysis is undertaken on an annual basis for each academic year to ensure the capacity of primary schools meets the demands arising from P1 pupils. These meetings take place between January and March with Headteachers, Education Service Managers and staff from Business and Operational Support and Asset Management, to review and agree the class structures within primary schools once the likely number of pupils attending is known. Any potential minor building works required to accommodate the pupil numbers are identified at this time.

In addition, in 2010 all the primary schools within each secondary school catchment area were examined.

All primary schools which had less than 15 pupils and a current occupancy level of below 40% were considered both in detail and in relation to the other schools within the secondary catchment area. The primary schools' projected rolls and the potential numbers of primary pupils that may result from planning applications received were taken into account to provide some indication of the likely future pattern of demand within the primary school catchment areas.

The impact of new housing in the Straloch Primary School catchment area was examined by looking at planning applications lodged with Perth and Kinross Council. As at May 2011, there were no approved applications.

As a result of this initial consideration of the school estate, Straloch Primary School was identified as a primary school which met the criteria of less than 15 pupils and below 40% occupancy. The undernoted table provides the information (updated as at May 2011) used within the initial assessment:

#### **Straloch Primary School**

School capacity	22 pupils
Pupil roll (September 2009 census)	5 pupils
Pupil roll (September 2010 census)	8 pupils
Current pupil roll (May 2011)	6 pupils
School occupancy level (September 2009)	22.7%
School occupancy level (September 2010)	36.4%
Current school occupancy level	27.3%

Highest projected school roll (to 2017/2018)	2 pupils
Projected occupancy using highest projected roll	9.1%
Potential roll including planning applications	2 pupils
Potential occupancy including planning applications	9.1%
Distance to neighbouring school (Kirkmichael PS)	3.8 miles

**Kirkmichael Primary School including numbers from mothballed Strone of Cally Primary School**

School capacity	72 pupils
Pupil roll (September 2009 census)	37 pupils
Pupil roll (September 2010 census)	39 pupils
School occupancy level (September 2009)	51.4%
School occupancy level (Census 2010)	54.2%
Highest projected school roll (to 2017/2018)	40 pupils
Projected occupancy using highest projected roll	55.5%
Potential roll including planning applications	53 pupils
Potential occupancy including planning applications	73.6 %
Distance to neighbouring school (Straloch)	3.8 miles

Pitlochry Primary School which is 8.8 miles from Straloch Primary School was considered as a possible alternative option for pupils from Straloch, however there are capacity issues at Pitlochry Primary School with two stages (Primary 6 and Primary 7) in the school already full. The potential capacity at Pitlochry Primary School is anticipated to rise to 89% from children in the catchment area. Therefore, in the longer term, accommodation for pupils from Straloch could not be guaranteed. In addition to this, Straloch Primary School's feeder secondary school is Blairgowrie High School and Pitlochry Primary School's feeder secondary school is Pitlochry High School. Therefore to provide a more consistent approach it would be appropriate to redelineate the catchment area to Kirkmichael Primary School as this school is also a feeder primary school for Blairgowrie High School. Although Pitlochry Primary School is not considered to be a viable option, it is mentioned for completeness within this option appraisal report.

In considering all options for Straloch Primary School, consideration was given to keeping Straloch Primary School open and redelineating the catchment area to extend the catchment area. However given the current position in relation to the Statutory Consultation currently underway for Strone of Cally Primary School, a change to Kirkmichael Primary School catchment area has already been proposed. Therefore, it would not be feasible to propose a further change to Kirkmichael Primary School catchment area at this time, as part of the proposals for Straloch Primary School.

The projected school roll is calculated using a recommended Scottish Government formula. This takes the known number of pupils within the school and adds in an average for the numbers of pupils expected over the next seven years based on previous pupil numbers, adjusted to take account of any specific circumstances. The calculation is based on the average of the previous 5 years' Primary 1 intake numbers. The highest potential roll takes

the projected school roll and adds the number of pupils reasonably expected to materialise from proposed housing developments in the catchment area. The occupancy level of a school is calculated using the current pupil numbers divided by the school pupil capacity expressed as a percentage.

The distance to the nearest school was calculated using IntraMap, a Geographic Information System (GIS) used within Perth and Kinross Council under licence from Ordnance Survey. The distance measured is the actual school to school distance for this purpose.

The Straloch School pupil roll at September 2009 Census was 5 and at September 2010 Census was 8. As at May 2011, there were 6 pupils attending Straloch Primary School, 3 from within the catchment and 3 placing requests.

As the pupil roll at Straloch Primary School was to fall to 2 pupils at the start of academic session 2011/2012, the decision was taken by the Executive Director (Education and Children's Services), in consultation with the Convener of the Lifelong Learning Committee, that Straloch Primary School would be mothballed from August 2011. This is a term which means provision in a school is suspended with pupils zoned to another catchment area. Mutually agreed arrangements were made with the parents of the remaining pupils for session 2011/12.

At May 2011, another 7 primary pupils lived within the Straloch Primary School catchment area but, as a result of successful placing requests made by the parents, attended Kirkmichael Primary School and Pitlochry Primary School. These parents have been advised of the arrangements to be implemented from August 2011.

All Perth and Kinross Primary schools have capacities which are adjusted from time to time to reflect any building works or alterations which have taken place within the school. The approved capacity of Straloch Primary School is 22 pupils.

The historical and projected pupil roll for Straloch Primary School up to 2017/2018 is attached as Appendix 2.

#### **4. Straloch and the local area**

Straloch and the local area are sparsely populated. Straloch is a small dispersed village lying at the foot of the Cairngorm mountain range. It lies within the Forest of Clunie Site of Special Scientific Interest (SSSI) and Special Protection Area (SPA) that covers many of the farms and estates within the area. Scottish Natural Heritage actively promote moorland management locally and Forest of Clunie is of outstanding interest for a variety of upland breeding birds and is internationally important for hen harrier, osprey, short-eared owl and merlin and is nationally important for

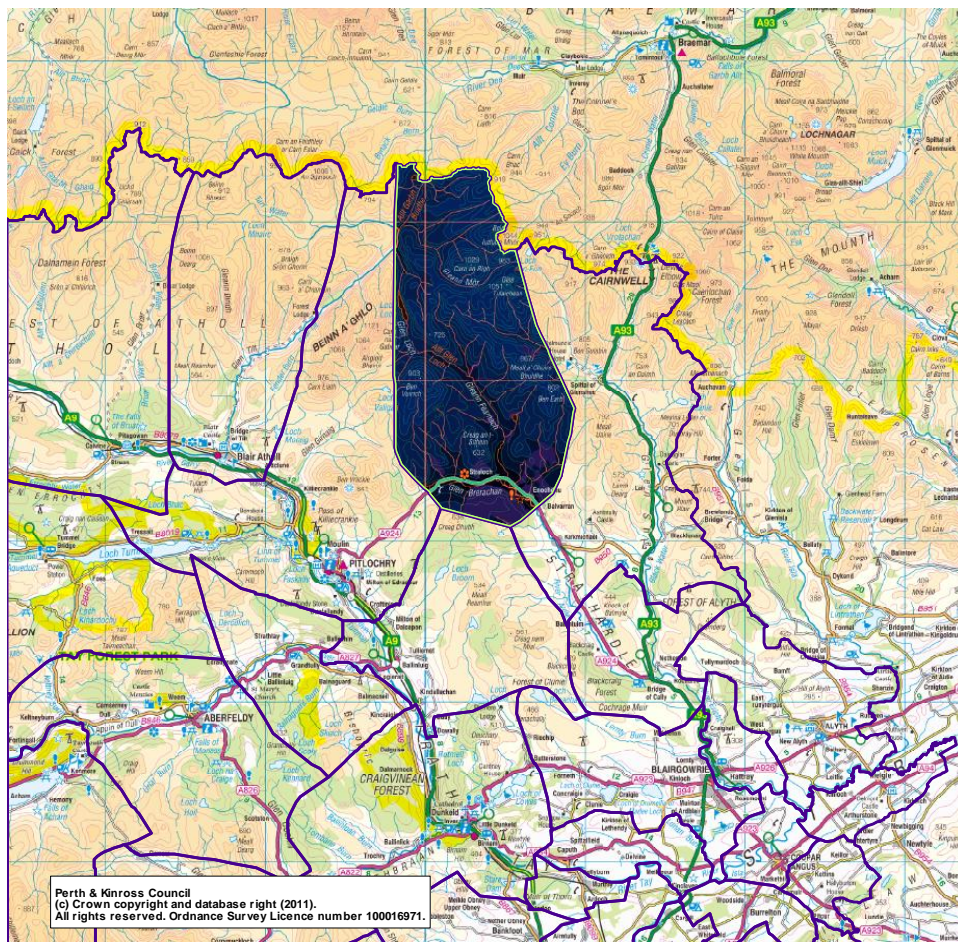
black grouse. Many areas around Straloch are designated SSSI for their diversity of grassland flora.

There are various holiday cottages and bed and breakfast establishments which accommodate visitors to this picturesque area throughout the year with the nearby winter sporting facilities at Glenshee. Kindrogan Field Studies Centre is an environmental centre that provides a range of learning opportunities for pupils, individuals and families as well as professional development for environmental professionals, teachers and outdoor leaders. This field studies centre lies less than two miles from Straloch Primary School. Attractions accessible from the area include fishing, mountain biking, walking and golfing (Blairgowrie and Alyth).

In terms of potential new business ventures in the area, enquiries for advice and support to Perth and Kinross Council and Business Gateway have been checked and there have been no enquiries received over the past few years by either service.

## 5. Straloch Primary School

Straloch Primary School is a single teacher school serving the village of Straloch and the local area. The catchment area for the school covers an area of 119.3 square kilometres (46.059 square miles) and is detailed on the map below.



Straloch Primary School is classed as a “very remote rural” school under Section 14 of the Schools (Consultation) (Scotland) Act 2010. The classification of rural and remote rural is based on two main criteria, settlement size and accessibility based on drive time. For Straloch Primary School the classification criteria is “Settlements of less than 3,000 people and with a drive time of over 60 minutes to a settlement of 10,000 or more.”

At Straloch Primary School there is a full time Headteacher and there is part-time Headteacher support, classroom assistant, and auxiliary/clerical assistant. The school receives visiting teacher support for Art and PE and janitorial assistance. PE is undertaken at Kirkmichael Village Hall and the all weather pitch at Bannerfield. The school also takes pupils skiing at Glenshee each year, conditions permitting.

Straloch Primary School is part of the single teacher school network where, three times per year, groups of single teacher schools meet to give pupils wider access to a range of social activities.

At the start of the 2010/2011 academic year, Straloch Primary School was operational with 8 pupils, 5 catchment and 3 placing requests, attending the school and 5 other pupils within the Straloch Primary School catchment area attending Kirkmichael Primary School and Pitlochry Primary School as a result of placing requests. Of the pupils who were attending Straloch Primary School, 3 were entitled to home to school transport.

Straloch Primary School main building is single storey attached to a two storey former school house that has now been incorporated to suit the educational needs of the community. The building was built around 1875 and is of roughly squared stone under a pitched roof. The most recent adaptation to the building (1995) was the demolition of the external toilet block and garage. The facilities were replaced with a toilet for disabled people, boys toilets, girls toilets, a cleaner’s store and another store room being built onto the main building.

The ground floor of the school contains a classroom, a GP room, a library, staffroom, office, cloakroom and the aforementioned toilet provision. The first floor accommodation is used by the school for storage of learning resources and other materials.

In terms of asset management, the Straloch Primary School building has been assessed by Perth and Kinross Council Property Services as in a satisfactory condition with some remedial works required to the first floor rooms, the skylights and the boundary walls.

The school site houses the community recycling facilities and a post box is built into the front wall of the school. The school grounds are mainly hard landscaping and the local estate has made an area of land available to the rear of the school which provides a soft landscape play area.



Site plans of Straloch Primary School are attached in Appendix 3.

Throughout Scotland, core facts are gathered and published on school buildings. The definition and assessment categorisations are set by the Scottish Government as follows:

Condition <sup>(1)</sup> - is an assessment of the physical condition of the school and its grounds. Categorisation is as follows:

- A: Good – Performing well and operating efficiently
- B: Satisfactory – Performing adequately but showing minor deterioration
- C: Poor – Showing major defects and/or not operating adequately
- D: Bad – Life expired and/or serious risk of imminent failure

Suitability <sup>(2)</sup> - is an assessment of the school as a whole, its buildings and its grounds and of the impact these have on learning and teaching, leisure and social activities and the health and well-being of all users. Categorisation is as follows:

- A: Good – Performing well and operating efficiently
- B: Satisfactory – Performing well but with minor problems
- C: Poor – Showing major problems and/or not operating optimally
- D: Poor – Does not support the delivery of services to children and communities

Sufficiency<sup>(1)</sup> - states the occupancy – pupil roll divided by capacity expressed as a percentage.

Source: (1) *Core Facts Building Our Future: Scotland's School Estate 2003*  
(2) *The Suitability Core Fact: Scotland's School Estate 2008*

The condition surveys are undertaken on a three year rolling programme by a Perth and Kinross Council building surveyor team led by a chartered building surveyor. The suitability assessment is undertaken by the Headteacher and validated by Senior Managers within Education and Children's Services. These assessments were undertaken annually until 2010, but it has now been agreed that these will be undertaken every three years unless significant building or operational change has occurred within the school.

The core facts for Straloch Primary School categorise both the building's condition and suitability as B (Satisfactory). The sufficiency (occupancy) of the school at the September 2010 school census was 36.4%.

Expenditure/investment within the buildings at Straloch Primary School over the past three financial years is given below:

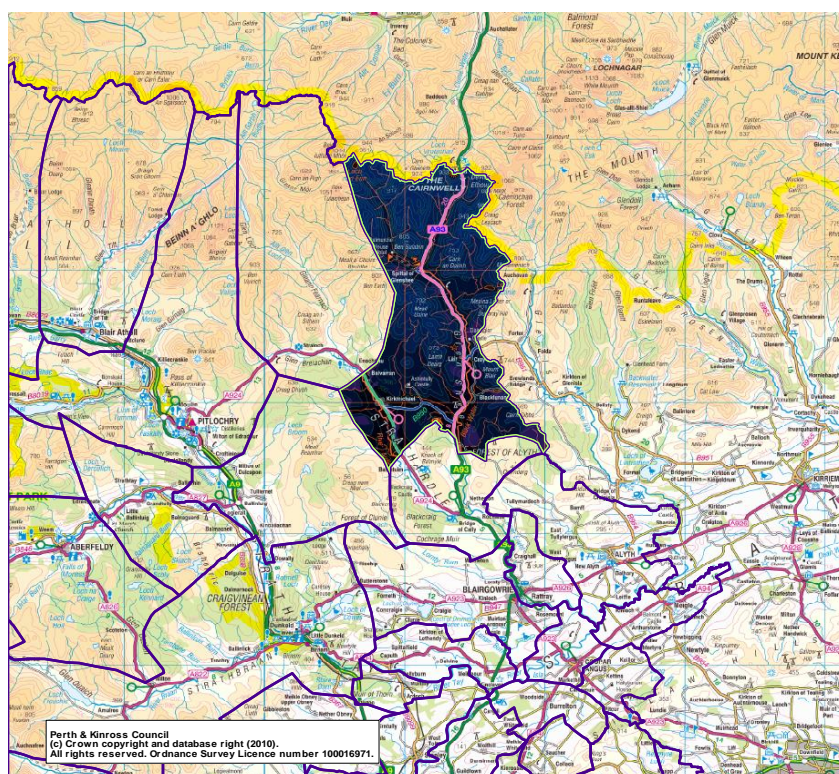
	2007/08	2008/09	2009/10
£'s	1,655.13	3,943.66	3,758.95

These figures reflect minor repairs, servicing and maintenance costs at Straloch Primary School.

There are no community lets; the school is used in the evenings for parents evenings and school events. The annual school ceilidh takes place at Kindrogan Field Studies Centre.

## 6. Kirkmichael Primary School

Kirkmichael Primary School is a 2 teacher school serving the village of Kirkmichael and the local area. The catchment area for the school covers an area of 109.186 square kilometres (73.431 square miles) and is highlighted on the map below:



Kirkmichael Primary School is classed as a “remote rural” school under Section 14 of the Schools (Consultation) (Scotland) Act 2010. The classification of rural and remote rural is based on two main criteria, settlement size and accessibility based on drive time. For Kirkmichael Primary School the classification criteria is “*settlements of fewer than 3,000*”

*people and with a drive time of between 30 and 60 minutes to a settlement of 10,000 or more”.*

At Kirkmichael Primary School there is a Headteacher, teacher, Headteacher support, 2 part-time clerical assistants, classroom assistant, 2 early childhood practitioners, support for learning, visiting specialists for expressive arts and PE and janitorial assistance.

Currently (May 2011), 36 pupils attend Kirkmichael Primary School. A statutory consultation is underway on a proposal to close Strone of Cally Primary School and transfer the pupils to Kirkmichael Primary School and redelineate the catchment area. The projected pupil roll data to 2017 generates an additional 1 pupil up to 2013 and no pupils thereafter. The outcome of this statutory consultation exercise is likely to be considered by the Lifelong Learning Committee in August 2011.

At Kirkmichael Primary School the main school building is a pre-1919 two storey stone building under a pitched slate roof with cast iron gutters and downpipes. The building sits below road level and the site overlooks the river. There is a large outdoor area with a mix of hard and soft landscaping and a multi use games area. The heating is electric. Also on the school site are 4 timber storage sheds.

The following facilities and accommodation are offered:

- 3 classrooms for primary education
- nursery
- toileting facilities
- staff/resources room
- dining accommodation/ general purpose room
- Headteacher's room
- small reception office
- storage

Site plans of Kirkmichael Primary School are attached in Appendix 4.

The core facts for the school categorise both the building's condition and suitability as B (Satisfactory). The sufficiency (occupancy) based on the 2010 school census is 54.2%.

Expenditure/investment within the school buildings at Kirkmichael Primary School over the past three financial years is given below:

	2007/08	2008/09	2009/2010
£'s	241,317	11,112	13,533

These figures reflect minor repairs, servicing and maintenance costs at Kirkmichael Primary School. The larger figure in 2007/08 reflects the investment of a two room extension at Kirkmichael Primary School. This was



the result of a recommendation from HMle for improving the accommodation at Kirkmichael Primary School which was detailed in their report of November 2001. This accommodation houses a nursery class and a classroom.

The impact of new housing in the Kirkmichael Primary School catchment area was examined by looking at planning applications lodged with Perth and Kinross Council. As at May 2011, there were 20 approved planning applications for a total of 23 houses. Applying the formula used within Perth and Kinross of 0.27 of a primary pupil being generated per house, this would equate to a requirement of 6.21 primary pupil places. There are three pending applications for 9 houses which would generate 2.43 primary pupil places which together, when rounded up, would result in 10 potential primary pupil places in total.

In the catchment area of Strone of Cally Primary School which is currently mothballed and pupils rezoned to Kirkmichael Primary School, as at May 2011 there were 6 planning applications for a total of 8 houses. Applying the formula as above, this would equate to a requirement for 2.16 primary pupil places which when rounded up, would result in 3 potential primary pupil places in total.

This would give a potential occupancy at Kirkmichael Primary School of 73.6%.

## **8. Options**

The options considered as a result of the appraisal exercise were:

- a) keep Straloch Primary School open with its existing catchment area,
- b) continued mothballing of Straloch Primary School, subject to regular review,
- c) close Straloch School and transfer the pupils to Kirkmichael Primary School and redelineate the catchment area.

The provision of primary education within Straloch needs to be considered in the context of the needs of the pupils and the local community, both now and in the future.

The following points were all considered when arriving at the decision to propose a statutory consultation exercise be undertaken on the potential closure of Straloch Primary School.

The low occupancy at Straloch Primary School is expected to decrease from 36% to a potential 9.1% to 2012 and 0% thereafter. The general population trends in Blairgowrie and the Glens ward do not reveal any increase that would generate additional pupils at Straloch Primary School.

Future plans for potential land use in Perth and Kinross appear in the Main Issues Reports (MIR) for the TAYplan and Perth and Kinross Local Development Plan (LDP). The TAYplan estimates that to meet the population projections, between 910 - 990 additional houses will be constructed per year across Perth and Kinross.

Within the Strathmore and Glens area of the MIR, this would equate to approximately 130 houses per year (at the high end development which is the upper estimate for the number of houses that could be built each year). The new draft LDP will cover the whole of Perth and Kinross now however the Blairgowrie/Eastern area is now referred to as Strathmore and the Glens.

The TAYplan sets out a hierarchical approach to directing new development to existing settlements and identifies Blairgowrie and Rattray as proposed second tier settlements which would take the largest proportion of any new development. The remainder of main development will likely be split between the third tier settlements of Alyth and Coupar Angus.

In line with the TAYplan MIR, little development is likely to be identified outwith these settlements in the landward LDP and any such development is likely to be of smaller scale.

Within the Highland Perthshire area of the MIR, the population projections would equate to approximately 85 houses per year (at the high end development which is the upper estimate for the number of houses which could be built each year).

The TAYplan MIR suggests the highest percentage of new housing development in the Highland Perthshire area will be concentrated to the towns of Aberfeldy and Pitlochry.

In line with the TAYplan MIR, little development is likely to be identified outwith these settlements in the landward LDP and any such development is likely to be of smaller scale.

Straloch Primary School has a small pupil roll with no foreseeable significant increase in pupil numbers arising from any developments in the area. The highest projected pupil roll between 2010 and 2012 is anticipated to be two and no pupils thereafter.

As a result of capacity issues, assurance could not be given that future pupils could be accommodated at Pitlochry Primary School and because its feeder secondary school is Pitlochry High School, this school was rejected as a viable option.

Within the Straloch Primary School catchment area, parents of 7 pupils already send their children to the nearby primary schools at Kirkmichael and Pitlochry. The majority of parents, with school age primary pupils attending Perth and Kinross schools, within the Straloch Primary School catchment already prefer to send pupils to a neighbouring school rather than the school

in Straloch. The travel distance from Straloch to Kirkmichael Primary School allows the journey to and from school to be undertaken within an acceptable time. Over the winter of 2010/11 Straloch Primary School was completely closed due to severe weather for 5 days.

Kirkmichael Primary School has the capacity to accommodate the forecasted pupil numbers from Straloch Primary School which would then represent a potential occupancy rate of 76.4%, (these figures assume the closure of Strone of Cally and potential pupils from known housing developments). There are opportunity costs associated with maintaining and running an underused asset such as Straloch Primary School. From an asset management perspective, it becomes more efficient to rationalise into one resource with improved sufficiency levels.

Therefore, this options appraisal recommends that primary education services at Straloch Primary School be ceased and the service be provided at Kirkmichael Primary School. This will require the catchment area of Kirkmichael Primary School to be redelineated and transport to and from school to be provided to primary children living more than 2 miles from Kirkmichael Primary School.

The table below shows the potential future pupil numbers at both Straloch Primary School and Kirkmichael Primary School:

	Potential Future Pupil Numbers		
	Projected Pupils <sup>1</sup>	Potential Pupils <sup>2</sup>	Total
Straloch Primary School	2	0	2
Kirkmichael Primary School <sup>3</sup>	40	13	53
<b>Total</b>	<b>42</b>	<b>13</b>	<b>55</b>

<sup>1</sup>Highest projected pupil numbers to 2017/2018

<sup>2</sup>Potential pupils generated from known planning applications

<sup>3</sup>Kirkmichael Primary School figures include pupil numbers from mothballed Strone of Cally Primary School

The possible potential primary pupils that could require primary education within the Straloch and Kirkmichael Primary Schools combined catchment area is 55 pupils. This would represent occupancy of 76.4% at Kirkmichael Primary School, (these figures assume the closure of Strone of Cally).

The size of the catchment area for Straloch Primary School is smaller than Kirkmichael Primary School catchment area (both pre and post Strone of Cally). The size of the catchment area for Straloch Primary School is not unusual for a rural school in Perth and Kinross.

Seven of the Straloch Primary School catchment pupils already attend Kirkmichael Primary School and Pitlochry Primary School as a result of successful placing requests. It is possible that this choice is related to where in the catchment they reside.

A travel distance of 3.8 miles is not an unreasonable distance to expect children to travel for primary school education in rural areas. Some pupils who attend Kirkmichael Primary School as a result of successful placing requests already travel further than this distance. Other catchment areas in Perth & Kinross also have such a travel distance within them. However, it is recognised that adverse weather in the winter currently impacts on travel arrangements in this area. In session 2009/2010, Kirkmichael Primary School was completely closed due to severe weather for 1 day. To date, there have been 5 school closure days in session 2010/11 due to severe weather affecting the whole of Perth and Kinross where the school was completely closed.

If Straloch Primary School was left mothballed on an indefinite basis, Perth and Kinross Council would incur annual costs to maintain the building. Unoccupied buildings can deteriorate more rapidly than operational premises and can become a focus for opportunistic crimes and/or targets for vandalism whether the premises are located in urban or rural areas. Repair works to rectify possible issues have not been included in the costings within this report.

## **9. Resource Implications**

Financial savings generated from closing Straloch Primary School amount to £103,207 on an annual basis. This saving is predominantly made up of staff costs and building running costs. The detailed savings are shown in Appendix 5.

On 30 June 2010, the Council approved the report Securing the Future – Towards 2015 and Beyond (Report 10/357 refers). This report set out our continuing strategy for securing the future, aiming to support the delivery of savings through revised service delivery models and ongoing improvement activities in the Council. Education and Children's Services Service Review Programme within this report contains a re-design project to "review the school estate".

On 25 August 2010, the Lifelong Learning Committee approved the report Review of School Estate – Straloch Primary School (Report 10/426 refers). This report sought approval to proceed with undertaking an Options Appraisal and, if appropriate, produce a Proposal Paper containing an Educational Benefits Statement in respect of Straloch Primary School

Therefore, any savings arising from the proposed option to close Straloch Primary School will be allocated against Education and Children's Services

budget savings targets which have currently been set for the period 2011-2014.

This will mitigate against making alternative budget reductions within other areas of Education and Children's Services, with a corresponding reduction in service delivery in that area.

The annual budget is built reflecting cost drivers such as the number of schools, buildings, staff and pupils. If Straloch Primary School were to be closed then future years' budgets would not contain any allowance for staffing Straloch Primary School and there would be reduced property costs (and possibly no costs should the building be sold in the future). Any per capita budgets relating to individual pupils would continue to be budgeted against the school that these pupils would attend following the closure of Straloch Primary School.

## **10. Environmental Impact**

The main environmental impacts of the options are as follows:

- If Straloch Primary School was to remain open there would be the continuing impact from needing to power, heat and light the building to provide primary education services.
- If Straloch Primary School was to close and the pupils transfer to Kirkmichael Primary School there would be an environmental impact from the transporting of 2 pupils. However, this would be offset by the requirement to no longer run Straloch Primary School. At Kirkmichael Primary School, the 2 additional pupils could be accommodated without any significant additional impact.

## **11. Impact on the Community**

The impact on the vibrancy of the community is unlikely to be affected significantly as all of the community events organised by external groups are held outwith Straloch Primary School.

Community capacity workers could assist in developing alternatives if there were particular occasions during the academic year when school pupils and community members come together.

## **12. Conclusion**

In summary, it is proposed that a statutory consultation exercise takes place on a proposal to close Straloch Primary School and transfer the pupils to Kirkmichael Primary School and redelineate the catchment area of Straloch Primary School to Kirkmichael Primary School. Currently, a small number of

parents wish to have their child attend this school. All catchment parents have already demonstrated their desire to have their children educated within a neighbouring school through successful placing requests.

Future pupil projections have been considered and Kirkmichael Primary School can accommodate all projected and potential pupils from the combined catchment areas. A higher occupancy level maximises use of the school estate and represents good asset management.

Travel distance to the neighbouring school is not excessive and pupils attending Kirkmichael Primary School already make this journey. However, it is recognised that adverse weather in the winter currently impacts on travel arrangements in this area.

Environmental impacts have been summarised and detailed work will be done as part of the environmental assessment for this proposal.

Local external community groups do not rely on using accommodation in Straloch Primary School for holding community events and closure of the school would have no impact on this. Community capacity building can assist to maintain community contacts.

## Ward Profile Information

### Population

Last updated | 26/04/2011

### Blairgowrie and the Glens (Ward 3)

#### Population Profile

Population Estimates 2009	Ward 3	PKC	Scotland
Total population	10,689	145,910	5,194,000
Population aged 16-19	504	6,887	264,187
% children	14.7%	17.0%	17.6%
% pensionable age	29.0%	3.1%	19.9%
% working age	56.2%	9.8%	62.6%
Male working age	3,122	46,288	1,679,890
Female working age	2,889	40,986	1,568,925

Source: GROS 2009 Small area population estimates, 2010 Population available Sep 2011

Population information is also available from the 2001 Census for Ward 3 and can be accessed from the [Blairgowrie and Glens Census Profile](#).

The Blairgowrie and the Glens ward has a lower percentage of children and working age population than the Perth and Kinross average and it has a higher percentage of pensionable age population. The town of Blairgowrie is the population centre accounting for around 80% of the population of the ward.

### Highland (Ward 4)

#### Population Profile

Population Estimates 2009	Ward 4	PKC	Scotland
Total population	9,485	145,910	5,194,000
Population aged 16-19	323	6,887	264,187
% children	13.9%	17.0%	17.6%
% pensionable age	28.0%	23.1%	19.9%
% working age	58.1%	59.8%	62.6%
Male working age	2,976	46,288	1,679,890
Female working age	2,533	40,986	1,568,925

Source: GROS 2009 Small area population estimates, 2010 Population available Sep 2011

Population information is also available from the 2001 Census for Ward 4 and can be accessed from the [Highland Census Profile](#).

The Highland ward is the largest ward in Perth and Kinross in terms of land mass however, the ward contains the smallest population of the 12 wards. The main population centres are the towns of Pitlochry and Aberfeldy which account for around 70% of the population of the ward.

## Economy

Last updated | 13/01/2011

### Blairgowrie and the Glens (Ward 3)

#### Economic Profile

<b>Economic Activity, Benefits and Tax Credits 2008</b>	<b>Ward 3</b>	<b>Perth and Kinross</b>	<b>Scotland</b>
% population who are income deprived	15%	11%	17%
% working age population who are employment deprived	10%	8%	12%
% population aged 16-24 claiming JSA*	3.4%	3.1%	6.1%
% population aged 25-49 claiming JSA*	2.7%	2.3%	4.0%
% population aged 50-pensionable age claiming JSA*	1.2%	1.4%	2.4%
% population aged 60+ claiming guaranteed pension credits	14.1%	12.5%	18.4%
Income support claimants (Quarter 4 Oct-Dec 2009)	275	2,980	182,550

\* JSA (Job Seekers Allowance)

Source: SNS extracted June 2010

Levels of both income and employment deprivation within Blairgowrie and the Glens are higher than the average for Perth and Kinross. This effect of this is a higher percentage of JSA claimants in all categories. There are also a higher percentage of people claiming guaranteed pension credit.

The five largest employers based on staffing numbers in Blairgowrie and the Glens Ward are:

- Thomas Thomson (Blairgowrie) Ltd
- Farmcare Ltd t/a The Co-operative Farms
- W P Bruce Ltd
- Tesco Stores Ltd
- Perth & Kinross Council - Blairgowrie High School



## Highland (Ward 4)

### Economic Profile

<b>Economic Activity, Benefits and Tax Credits 2008</b>	<b>Ward 3</b>	<b>Perth and Kinross</b>	<b>Scotland</b>
% population who are income deprived	6%	11%	17%
% working age population who are employment deprived	6%	8%	12%
% population aged 16-24 claiming JSA*	2.3%	3.1%	6.1%
% population aged 25-49 claiming JSA*	1.9%	2.3%	4%
% population aged 50-pensionable age claiming JSA*	1.3%	1.4%	2.4%
% population aged 60+ claiming guaranteed pension credits	9.7%	12.5%	18.4%
Income support claimants (Quarter 2 Apr-Jun 2010)	110	2,980	182,550

\* JSA (Job Seekers Allowance)  
Source: SNS extracted June 2010

The Highland Ward has a lower percentage of income and employment deprivation compared to the Perth and Kinross average however, numbers of 16-24 year olds claiming JSA is the same as the Perth and Kinross average.

The five largest employers based on staffing numbers in the Highland Ward are:

- House Of Bruar
- Pitlochry Festival Theatre
- Fishers Services Limited
- Atholl Estates
- W B Grieve Groundworks

## Housing

Last updated | 41/10/2010

### Blairgowrie and the Glens (Ward 3)

This page contains statistics for Housing within the Blairgowrie and Glens Ward. If you would like more general information on Council Housing services please visit the main [Housing pages](#). Details of the local Housing office within Ward 3 can be obtained from the [Housing and Benefits contacts page](#).

#### Housing Profile

<b>Council Tax Bands - 2009</b>	<b>Ward 3</b>	<b>PKC</b>	<b>Scotland</b>
% of dwellings in band A	15.3%	13.2%	22.4%
% of dwellings in bands A-C	49.6%	51%	62.1%
% of dwellings in bands D-E	33.6%	30.6%	25.8%
% of dwellings in bands F-H	16.8%	18.4%	12.1%

Source: SNS extracted June 2010

<b>House Types - 2009</b>	<b>Ward 3</b>	<b>PKC</b>	<b>Scotland</b>
Total number of dwellings	5,299	68,507	2,479,954
Flats	20.3%	17,794	948,153
Terraced dwellings	15.3%	10,518	512,411
Semi detached	17.2%	14,367	492,320
Detached dwellings	46.7%	25,695	514,480
Unknown attachment	0.5%	133	12,590

Source: SNS extracted June 2010

<b>Occupancy</b>	<b>Ward 3</b>	<b>PKC</b>	<b>Scotland</b>
% of dwellings that are occupied	94%	95%	96%
% of dwellings that are vacant	3%	3%	3%
% of dwellings that are second homes	3%	3%	1%
% of dwellings that are occupied exemptions	1%	1%	3%
% of dwellings that are single adult discount	32%	34%	38%

Source: SNS extracted June 2010

## Highland (Ward 4)

### Housing Profile

<b>Council Tax Bands - 2009</b>	<b>Ward 4</b>	<b>PKC</b>	<b>Scotland</b>
% of dwellings in band A	9.27%	13.2%	22.4%
% of dwellings in bands A-C	44.33%	51%	62.1%
% of dwellings in bands D-E	34.39%	30.6%	25.8%
% of dwellings in bands F-H	21.28%	18.4%	12.1%

Source: SNS extracted June 2010

<b>House Types - 2009</b>	<b>Ward 4</b>	<b>PKC</b>	<b>Scotland</b>
Total number of dwellings	5,037	68,507	2,479,954
Flats	15.03%	17,794	948,153
Terraced dwellings	11.51%	10,518	512,411
Semi detached	25.73%	14,367	492,320
Detached dwellings	47.49%	25,695	514,480
Unknown attachment	0.24%	133	12,590

Source: SNS extracted June 2010

<b>Occupancy</b>	<b>Ward 4</b>	<b>PKC</b>	<b>Scotland</b>
% of dwellings that are occupied	87%	95%	96%
% of dwellings that are vacant	3%	3%	3%
% of dwellings that are second homes	11%	3%	1%
% of dwellings that are occupied exemptions	1%	1%	3%
% of dwellings that are single adult discount	29%	34%	38%

Source: SNS extracted June 2010

### Education

Last updated | 03/03/2011

## Blairgowrie and the Glens (Ward 3)

### Pupil Profile

<b>Pupils - 2009</b>	<b>Ward 3</b>	<b>PKC</b>	<b>Scotland</b>
Primary Pupils - Male	344	4,987	186,450
Primary Pupils - Female	320	4,703	178,369
Primary Pupils - Total	664	9,690	364,819
Secondary Pupils - Male	294	3,915	151,359
Secondary Pupils - Female	296	3,925	150,152
Secondary Pupils - Total	590	7,840	301,511

Source: SNS extracted June 2010

## School Rolls

Individual School Pupil Roll Numbers	2007	2008	2009
Blairgowrie High School	940	919	909
Newhill Primary	346	342	321
Kirkmichael Primary	46	47	37
Ratray Primary	272	267	236
Straloch Primary	8	5	5
Strone of Cally Primary	8	4	2
St Stephens RC Primary	57	56	65

Source: PKC Annual School Census

## School Information

School	Handbook	Inspection Reports
Blairgowrie High School	Not yet available	<a href="#">Blairgowrie HM Inspection Follow Up Report 2006 [PDF: 141Kb]</a>
Newhill Primary	<a href="#">Newhill School Handbook 2010 [pdf 235KB]</a>	<a href="#">Hill Primary Inspection Report 2007 [PDF: 179Kb]</a>
Kirkmichael Primary	<a href="#">Kirkmichael School Handbook 2010 [PDF: 179 Kb]</a>	<a href="#">Kirkmichael HM Inspection Report 2010 [PDF: 58Kb]</a>
Ratray Primary	<a href="#">Ratray School Handbook 2009 [PDF: 178Kb]</a>	<a href="#">Ratray HM Inspection Report 2007 [PDF: 44Kb]</a>
Straloch Primary	<a href="#">Straloch School Handbook 2010 [PDF: 317Kb]</a>	<a href="#">Straloch HM Inspection Report 2004 [PDF: 25Kb]</a>
St Stephens RC Primary	Not yet available	<a href="#">St Stephen's HM Inspection Report 2003 [PDF: 33Kb]</a>
Strone of Cally Primary	Mothballed*	<a href="#">Strone of Cally HM Inspection Report 2009</a>

\*This is a term which means that operations in a school have been suspended with pupils being zoned to another catchment area. For more information please see [Review of School Estate – Strone of Cally Primary School \[PDF: 296Kb\]](#)

## Highland (Ward 4)

### Pupil Profile

<b>Pupils - 2009</b>	<b>Ward 4</b>	<b>PKC</b>	<b>Scotland</b>
Primary Pupils - Male	278	4,987	186,450
Primary Pupils - Female	270	4,703	178,369
Primary Pupils - Total	548	9,690	364,819
Secondary Pupils - Male	252	3,915	151,359
Secondary Pupils - Female	224	3,925	150,152
Secondary Pupils - Total	476	7,840	301,511

*Source: SNS extracted June 2010*

### School Rolls

<b>Individual School Pupil Roll Numbers</b>	<b>2007</b>	<b>2008</b>	<b>2009</b>
Blair Atholl Primary School	27	22	26
Breadalbane Academy (Primary)	205	195	187
Breadalbane Academy (Secondary)	490	497	507
Glenlyon Primary School	11	12	7
Grandtully Primary School	30	27	23
Kenmore Primary School	53	59	61
Kinloch Rannoch Primary School	29	29	30
Logierait Primary School	31	25	30
Pitlochry Primary School	175	200	200
Pitlochry High School	198	174	160
Struan Primary School	6	3	4

Source: PKC Annual School Census

## School Information

School	Handbook	Inspection Reports
Blair Atholl Primary School	<a href="#">Blair Atholl School Handbook 2009 [pdf: 233 KB]</a>	<a href="#">Blair Atholl HM Inspection Report 2002 [pdf 38KB]</a>
Breadalbane Academy (Primary)	<a href="#">Breadalbane Academy School Handbook [pdf 307KB]</a>	<a href="#">Breadalbane HM Inspection Report 2006 [pdf: 263Kb]</a>
Breadalbane Academy (Secondary)	<a href="#">Breadalbane Academy School Handbook [pdf 307KB]</a>	<a href="#">Breadalbane HM Inspection Report 2006 [pdf: 263Kb]</a>
Glenlyon Primary School	<a href="#">Glenlyon School Handbook 2009 [PDF: 265Kb]</a>	<a href="#">Glenlyon HM Inspection Report 2008 [PDF: 45Kb]</a>
Grandtully Primary School	<a href="#">Grandtully School Handbook [pdf 206KB]</a>	<a href="#">Grandtully HM Inspection Report 2007 [PDF: 74Kb]</a>
Kenmore Primary School	<a href="#">Kenmore School Handbook 2010 [PDF: 227Kb]</a>	<a href="#">Kenmore HM Inspection Report 2005 [PDF: 47Kb]</a>
Kinloch Rannoch Primary School	Not yet available	<a href="#">Kinloch Rannoch HM Inspection Report 2009 [PDF: 62Kb]</a>
Logierait Primary School	<a href="#">Logierait School Handbook 2010 [pdf 402KB]</a>	<a href="#">Logierait HM Inspection Report 2001 [PDF: 31Kb]</a>
Pitlochry Primary School	<a href="#">Pitlochry Primary School Handbook [PDF: 322Kb]</a>	<a href="#">Pitlochry HM Inspection Report 2008 [PDF: 60Kb]</a>
Pitlochry High School	<a href="#">Pitlochry Primary School Handbook [PDF: 322Kb]</a>	<a href="#">Pitlochry HM Inspection Report 2008 [PDF: 60Kb]</a>
Struan Primary School	<a href="#">Struan School Handbook [PDF:159Kb]</a>	<a href="#">Struan HM Inspection Report 2007 [PDF: 40Kb]</a>

## Deprivation

Last updated | 10/11/2010

### Blairgowrie and the Glens (Ward 3)

#### National Deprivation

The Blairgowrie and Glens ward is unique in Perth and Kinross as it is the only ward out with Perth City that has local areas which are considered deprived as defined by the Scottish Index of Multiple Deprivation (SIMD). The

two areas (datazones) are both found within Rattray. Datazones are geographical areas of varying size which have populations of between 500-1000 people. There are 6505 Datazones in Scotland and the SIMD ranked these according to relative deprivation.

In total there are 6 datazones defined by the SIMD as being within the 15% most deprived areas of Scotland, the other four are in Perth City.

### Datazone Profile

<b>Datazone</b>	<b>S01005127</b>	<b>S01005130</b>
Total population	607	613
% Children 2008	17.6% (107)	22.4% (137)
% Working age 2008	56.3% (342)	57.1% (350)
% Pensionable age 2008	26% (158)	20.6% (126)
% Income deprived 2008	34% (206)	35% (215)
% Employment deprived 2008	25% (152)	27% (166)

### Highland (Ward 4)

This ward has no local areas which are considered deprived as defined by the Scottish Index of Multiple Deprivation.

---

### Physical Environment

Last updated | 26/04/2011

### Blairgowrie and the Glens (Ward 3)

#### Pollution Profile

<b>Pollution Measures</b>	<b>Ward 3</b>	<b>PKC</b>	<b>Scotland</b>
NO <sup>2</sup> concentration: 2002-2004 (Microgrammes per cubic meter)	6.0	9.3	14.4
PM10 concentration: 2002-2004 (Microgrammes per cubic meter)	11.1	11.9	26.6
% of people within 0-500m of any site derelict pre 1991: 2006	13.9%	5.2%	*
% of people within 0-500m of any derelict site: 2006	30.9%	18.2%	*

Source: SNS extracted June 2010

\* Information is only measured at Local Authority Level

## Planning

To view planning application in your area you can search using the Public Access system available through the [main planning pages](#).

## Waste Services

Waste Bin collection dates can be found by using the [find my nearest search](#).

The local recycling centre in Ward 3 is located in Blairgowrie Town at Essendy Road. The percentage of waste recycled from the Blairgowrie site in 2009 was very high with 80% of waste being recycled. Recycling services in the area are also available to residents through the kerbside recycling scheme.

Recycling points are also located at the following locations:

Enochdhu - Dirnanean Car Park  
Kirkmichael - Bannerfield public park car park  
Blairgowrie - Croft Lane Car Park  
Blairgowrie - Tesco, Welton Road

Further details on Waste and recycling services are available from the main [Waste and Recycling Pages](#).

## Burial Grounds

The Council is also responsible for maintaining 8 Burial grounds within Blairgowrie and the glens at the following locations:

Bendochy Burial Ground  
Blairgowrie Cemetery  
Kinloch Church Yard  
Kirkmichael Cemetery  
Kirkmichael Churchyard  
Ratray Church Graveyard  
Spittal of Glenshee - Churchyard  
The Hill Church (Churchyard), Blairgowrie

Further information is available on the main [Bereavement Services pages](#).

## Highland (Ward 4)

### Pollution Profile

Pollution Measures	Ward 4	PKC	Scotland
NO <sup>2</sup> concentration: 2002-2004 (Microgrammes per cubic meter)	4.0	9.3	14.4



PM10 concentration: 2002-2004 (Microgrammes per cubic meter)	10.1	11.9	26.6
% of people within 0-500m of any site derelict pre 1991: 2006	0.2%	5.2%	*
% of people within 0-500m of any derelict site: 2006	3.3%	18.2%	*

Source: SNS extracted June 2010

\* Information is only measured at Local Authority Level

## Planning

To view planning application in your area you can search using the Public Access system available through the [main planning pages](#).

## Waste Services

Waste Bin collection dates can be found by using the [find my nearest](#) search.

There are two recycling centres in Ward 4 one is located at Bridge Lane in Pitlochry and the other is at Breadalbane industrial estate in Aberfeldy. The percentage of waste recycled from the Pitlochry site in 2009 was 53% and the Aberfeldy site was 45%. Recycling services in the area are also available to residents through the kerbside recycling scheme

Recycling points are also located at the following locations:

Kinloch Rannoch (Loch Rannoch Hotel)  
 Kinloch Rannoch (Tummel Valley Caravan Park)  
 Blair Atholl (Blair Castle Caravan Park)  
 Blair Atholl (Bowling Green Car Park)  
 Pitlochry (Atholl Road Car Park)  
 Aberfeldy (Moness Terrace Car Park)

Further details on Waste and recycling services are available from the main [Waste and Recycling Pages](#).

## Burial Grounds

The Council is also responsible for maintaining 23 Burial grounds within Highland at the following locations:

Ardalnaig Burial Ground  
 Blair Atholl & Struan Parish Church  
 Burnfoot Cemetery, Aberfeldy  
 Camghourn Burial Ground  
 Kinloch Rannoch Cemetery  
 Pitlochry Cemetery  
 Dull Parish Church Graveyard  
 Fonab Cemetery

Fortingall Churchyard & War Memorial  
Glenlyon - Churchyard  
Innerhadden Burial Ground  
Kenmore Churchyard  
Killichonan Graveyard  
Kilmaveonaig Churchyard (Blair Atholl)  
Kirkton Churchyard  
Lawers Burial Ground  
Logierait Cemetery  
Logierait Churchyard  
Moulin Churchyard, Pitlochry  
Old Kirk of Weem - Churchyard  
St Lukes Churchyard  
Struan Churchyard  
Tenandry Churchyard

Further information is available on the main [Bereavement Services pages](#).

**Historical and Projected Pupil Roll Data for Straloch Primary School**

1999	2000	2001	2002	2003	2004	2005	2006	2007	2008	2009
11	11	11	11	10	7	12	9	8	5	5

Source: Scottish Government – School Education - Datasets

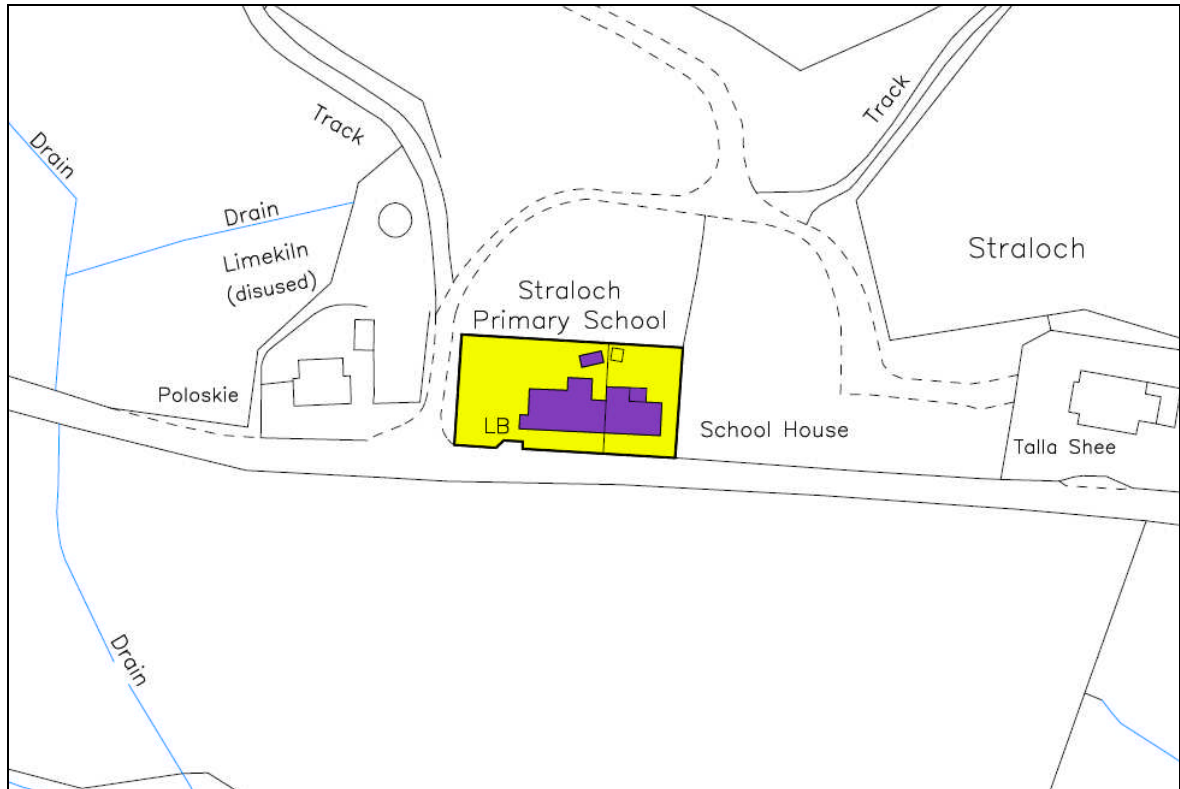
2010	2011	2012	2013	2014	2015	2016	2017	
8	0	0	0	0	0	0	0	(mothballed)
8	2	2	0	0	0	0	0	(If reopened)

**Historical and Projected Pupil Roll Data for Kirkmichael Primary School**

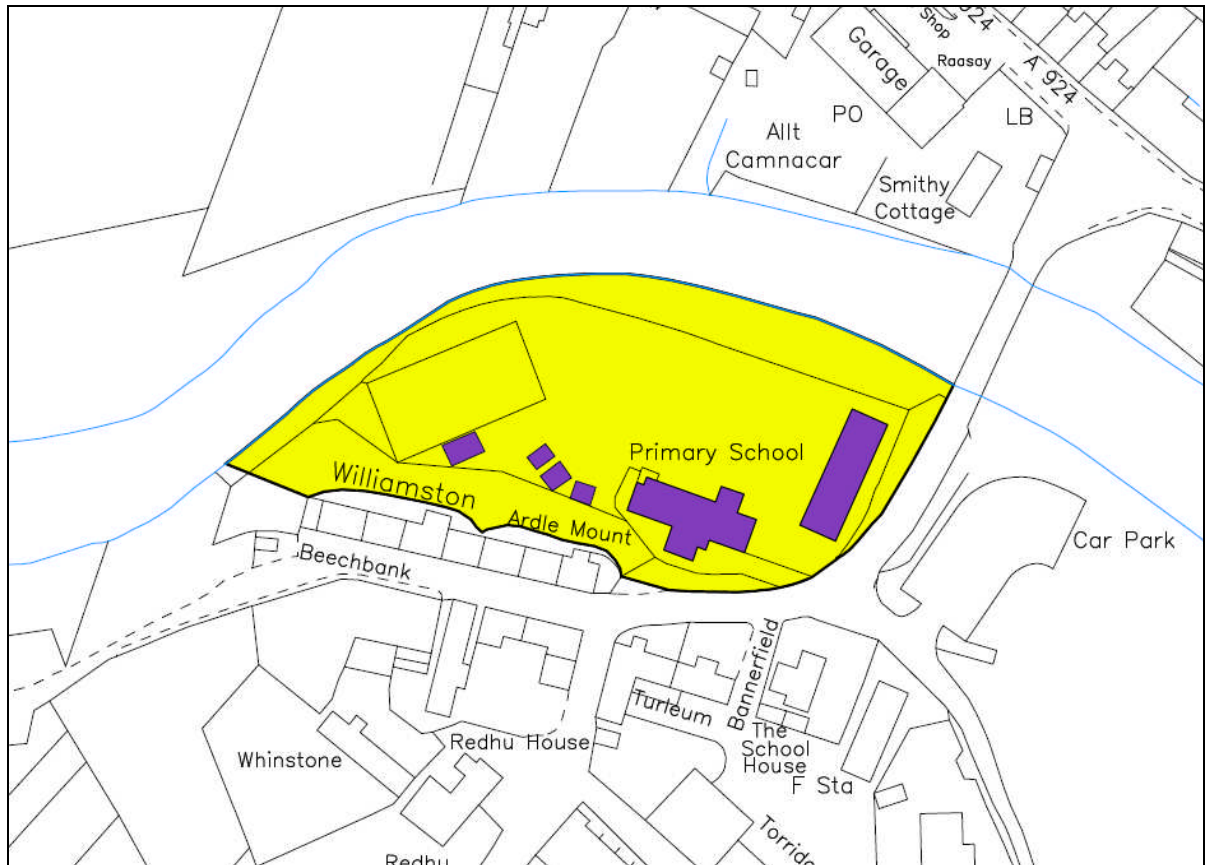
1999	2000	2001	2002	2003	2004	2005	2006	2007	2008	2009
37	35	42	45	44	44	42	44	46	47	37

2010	2011	2012	2013	2014	2015	2016	2017
39	38	37	36	34	37	40	36

### Straloch Primary School Site Plan



### Kirkmichael Primary School Site Plan



Straloch Costings

<u>Straloch</u> <u>DSM Budget Heading</u>	<u>2011-2012</u> <u>Budget</u>	<u>Options</u>			<u>Comments:</u>
		<u>A</u> <u>Costs/</u> <u>(Savings)</u> <u>£</u>	<u>B</u> <u>Costs/</u> <u>(Savings)</u> <u>£</u>	<u>C</u> <u>Costs/</u> <u>(Savings)</u> <u>£</u>	
Staff	88,814	0	(88,814)	(88,814)	Budget saving as staff will be redeployed into other vacancies
Supply	945	0	(945)	(945)	Budget saving as costs based on staffing FTE and not pupil numbers
Staff Training and Review	950	0	(950)	(950)	Budget saving as increased pupil numbers would have no impact on other schools' budget allocation
Property	11,369	0	(11,369)	(11,369)	Budget saving only achievable in full if property sold, otherwise mothball costs incurred (see notes)
Supplies & Services	1,097	0	(645)	(645)	Only small school allowances and flat rate allocations can be saved.
Transport	484	0	(484)	(484)	Budget saving as costs based on staffing FTE and not pupil numbers
<b>Total DSM</b>	<b>103,659</b>	<b>0</b>	<b>(103,207)</b>	<b>(103,207)</b>	
Home to School Transport	0	0	0	0	At present there are no anticipated costs due existing children already being subject to successful placing requests at other schools
Potential Mothball Costs	0	0	6,000	0	) Estimated costs for basic maintenance and water/ energy. Under option C mothballing ) costs would also be incurred if the property was not/ until sold
<b>Net Cost/(Saving)</b>	<b>103,659</b>	<b>0</b>	<b>(97,207)</b>	<b>(103,207)</b>	

NOTES:

**All costs/savings shown are assumed to be full year savings**

**Option A**

No change to current budgets so no finance implications.

**Option B**

Almost all the Devolved School Management (DSM) budget would be saved in this option.  
Note that any decision to mothball the school will require £6k per annum to be retained to cover these costs.

**Option C**

The saving with this option is equal to option B excluding mothballing costs.

**Other**

Any consequential short term costs arising from the implementation of the proposed option, such as redundancy or the removal of fixtures and fittings are considered minimal and will be met from existing ECS revenue budgets.



## PERTH AND KINROSS COUNCIL

### EDUCATION AND CHILDREN'S SERVICES

#### PROPOSAL PAPER

The following schools are affected by this proposal document:

- **Straloch Primary School**
- **Kirkmichael Primary School**

This document has been issued by Perth and Kinross Council for proposal in terms of The Schools (Consultation) (Scotland) Act 2010.

Any Ordnance Survey map data included within this document is provided by Perth and Kinross Council under licence from Ordnance Survey in order to fulfil its public function in relation to this public proposal. Persons viewing this mapping should contact Ordnance Survey Copyright for advice where they wish to licence Ordnance Survey mapping data for their own use.

## DISTRIBUTION

A copy of this document is available on the Perth and Kinross Council website: [www.pkc.gov.uk](http://www.pkc.gov.uk)

A copy of this document will be provided to:

- The Parent Council (if any) of the affected schools
- The parents of the pupils and children at the affected schools
- Parents of children expected to attend an affected school within 2 years of the date of publication of this proposal document
- The teaching and ancillary staff at the affected schools
- The trade union representatives of the above staff
- The Community Councils
- Relevant users of the affected schools
- Elected Members of Perth and Kinross Council
- The Constituency MSP and List MSPs covering the Constituency
- The Constituency MP
- The Executive Director, The Environment Service, Perth and Kinross Council
- Tayside Contracts
- HMIE

A copy of this document is also available from:

- Education and Children's Services, Pullar House, 35 Kinnoull Street, Perth, PH1 5GD
- Council Headquarters, 2 High Street, Perth
- Public libraries in the vicinity of the schools affected
- Local area offices in the vicinity of the schools affected
- The schools affected by the proposal

This document is available in alternative formats or in translated form for readers whose first language is not English. Please apply to Education and Children's Services, Pullar House, 35 Kinnoull Street, Perth, PH1 5GD by telephone on 01738 476200; or by e-mail: [ECSGeneralEnquiries@pkc.gov.uk](mailto:ECSGeneralEnquiries@pkc.gov.uk)



## **SUMMARY OF PROCESS FOR THIS PROPOSAL DOCUMENT**

### **1. Consideration by the Lifelong Learning Committee**

This proposal document has been issued as a result of a decision on 1 June 2011 of the Lifelong Learning Committee of Perth and Kinross Council. This is to seek views on the proposals in this paper.

### **2. Proposal document issued to consultees and published on Council website**

A copy of this document will then be issued free of charge to the consultees listed on the preceding page, and it will also be published on the Council website: [www.pkc.gov.uk](http://www.pkc.gov.uk)

### **3. Publication of advertisement in local newspapers**

An advertisement will be placed in the relevant local newspapers. In addition, there may be announcements related to the Proposal process on the local radio station, Radio Tay.

### **4. Length of consultation period**

An advertisement will be placed in local newspapers on 17 August 2011. The consultation will thereafter run until close of business on 28 October 2011, which includes a period of 40 school days.

### **5. Public meeting**

A public meeting will be held, the details of which are given on Page 6 of this document.

### **6. Involvement of HMIE**

When the proposal document is published, a copy will also be sent to HMIE by the Education Authority. HMIE will also receive a copy of any relevant written representations received by the Authority from any person during the consultation period or, if HMIE agree, a summary of them. HMIE will further receive a summary of any oral representations made to the Authority at the public meeting which will be held and, as available (and so far as otherwise practicable), a copy of any other relevant documentation.

HMIE will then prepare a report on the educational aspects of the proposal not later than 3 weeks after the Authority has sent them all representations and documents mentioned above. For the avoidance of doubt, the 3 week period will not start until after the consultation period has ended. In preparing their report, HMIE may enter the affected schools and make such reasonable enquiries of such people there as they consider appropriate and may make such reasonable enquiries of such other people as they consider appropriate.

## **7. Preparation of consultation report**

The Education Authority will review the proposal having regard to the HMIE Report, written representations that it has received and oral representations made to it by any person at the public meeting.

It will then prepare a consultation report. This report will be published in electronic and printed formats and will be advertised in local newspapers. It will be available on the Council website and from Council Headquarters buildings, both at 2 High Street and Pullar House, Perth, public libraries in the vicinity of the affected schools, local offices in the vicinity of the affected schools as well as the affected schools, free of charge. Anyone who made written representations to the Authority during the consultation period will also be informed about the report.

The report will include a record of the total number of written representations made to the Authority during the consultation period, a summary of the written representations, a summary of the oral representations made at the public meeting, the Authority's response to the HMIE Report as well as any written or oral representations it has received, together with a copy of the HMIE Report and any other relevant information, including details of any alleged inaccuracies and how these have been handled. The report will also contain a statement explaining how the Authority complied with the requirement to review the proposal in light of the HMIE Report and representations (both written and oral) that it received. The consultation report will be published and available for further consideration for a period of 6 weeks.

## **8. Decision**

This report together with any other relevant documentation will be considered by the Lifelong Learning Committee of Perth and Kinross Council, who will come to a decision about whether to implement the proposal.

## **9. Scottish Ministers Call-in**

When the Education Authority has made a final decision to implement the proposal, it will require to notify the Scottish Ministers of that decision, and provide them with a copy of the proposal document and consultation report. This must be done within 6 working days of that decision. The Scottish Ministers have a 6 week period from the date of that final decision to decide if they will call-in the proposal. Within the first 3 weeks of that 6 week period, the Scottish Ministers will take account of any relevant representations made to them by any person. Until the outcome of the 6 week call-in process is known, the Authority cannot proceed to implement the proposal.

If the Scottish Ministers call-in the proposal, they may refuse to consent to the proposal or grant their consent to the proposal subject to conditions or unconditionally.

## **10. Note on Corrections**

If any inaccuracy or omission is discovered in this proposal document either by the Council or any person, the Council will determine if relevant information has been omitted or, there has been an inaccuracy. It will then take appropriate action which may include the issue of a correction or the reissuing of the proposal paper or the revision of the timescale for the consultation period if appropriate. In that event, relevant consultees and HMIE will be advised.

## **11. Note**

This consultation is being conducted having regard to the terms of the Schools (Consultation) (Scotland) Act 2010.

## **PUBLIC MEETING**

A public meeting will be held in Kirkmichael to discuss these proposals. Anyone wishing to attend the public meeting is invited to do so. The meeting, which will be convened by the Education Authority, will be addressed by the Executive Director (Education and Children's Services), or other senior officers of the Council.

The meeting will be an opportunity for interested parties to:

- Hear more about the proposal
- Ask questions about the proposal
- Have their views recorded so that they can be taken into account as part of the consultation process.

The meeting will be held on:

**Venue – Kirkmichael Village Hall**

**Date – tbc**

**Time – 7.00 pm**

A note will be taken at the meeting of questions and views. This note will be published on the Council website, and a printed copy will be made available upon request.

**PERTH AND KINROSS COUNCIL  
EDUCATION AND CHILDREN'S SERVICES**

**THIS IS A PROPOSAL DOCUMENT**

Proposal :

That subject to the outcome of this proposal exercise :

- Education provision at Straloch Primary School be discontinued with effect from Wednesday 27 June 2012, or as soon as possible thereafter;
- That the pupils of Straloch Primary School receive their education at Kirkmichael Primary School, from Tuesday 14 August 2012 or as soon as possible thereafter; and
- That the delineated area of Kirkmichael Primary School be extended to subsume the whole delineated area of Straloch Primary School from Tuesday 14 August 2012.

## **1. BACKGROUND**

- 1.1 Straloch Primary School is a single teacher primary school serving the village of Straloch and the surrounding area. The capacity of Straloch Primary School is 22 pupils. At September 2010, there were 8 pupils attending Straloch Primary School, with 3 of these children attending by way of placing request. There are 10 pupils live within the catchment area for Straloch Primary School, however none of these pupils are to be enrolled at Straloch Primary School for session 2011/12. The projected roll at Straloch Primary School for August 2011 is to be 2 pupils. Both these pupils live outwith the catchment area for Straloch Primary School.
- 1.2 The situation at Straloch Primary School has been carefully monitored and kept under review by the Head of Education Services in terms of pupil numbers, the very small number of pupils in attendance and requests for future pupil enrolments. Only 2 pupils were due to be in attendance during school session 2011/2012. A decision was taken to "mothball" Straloch Primary School from August 2011 (this is a term which means that operations in a school have been suspended with pupils being zoned temporarily to another catchment area). Mutually agreed arrangements were made with the parents of the remaining pupils for session 2011/12.
- 1.3 The pupil roll at Straloch Primary School has continued to decline over a period of years and only 2 pupils were due to be in attendance during school session 2011/2012.

Straloch Primary School catchment area has been temporarily rezoned to Kirkmichael Primary School for the period where Straloch Primary School remains “mothballed”.

- 1.4 Seven pupils from the Straloch Primary School catchment area currently attend Kirkmichael Primary School and Pitlochry Primary School as a result of successful placing requests.

The highest projected roll for Straloch Primary School to 2017/2018 is 2 pupils.

- 1.5 Kirkmichael Primary School has a roll of 39 pupils (as at Census 2010) and capacity for 72 pupils. Kirkmichael Primary School is situated 3.8 miles from Straloch Primary School.
- 1.6 At its meeting on 25 August 2010, the Lifelong Learning Committee of Perth and Kinross Council approved Report 10/426 by the Executive Director (Education and Children’s Services). It agreed to proceed to undertake an Options Appraisal, and, if appropriate, produce a Proposal Paper containing an Educational Benefits Statement in respect of Straloch Primary School.
- 1.7 This followed the preparation of an Options Appraisal which assessed past and current school rolls together with future roll projections across the school estate and determined best value in financial and non-financial terms for the relocation of the service currently provided at Straloch Primary School.
- 1.8 The consultation process to be carried out in consequence of the Committee’s decision, and involving Her Majesty’s Inspectorate of Education (HMIE) and the general public, will be in terms of the Schools (Consultation) (Scotland) Act 2010.

## **2. PROPOSAL**

- 2.1 It is therefore proposed that:

Proposal :

- Education provision at Straloch Primary School be discontinued with effect from Wednesday 27 June 2012, or as soon as possible thereafter;
- That pupils from Straloch have their education provided at Kirkmichael Primary School, from Tuesday 14 August 2012 or as soon as possible thereafter; and
- The delineated area of Kirkmichael Primary School be extended to subsume the whole catchment area of Straloch Primary School from Tuesday 14 August 2012.

### **3. STATUTORY RESPONSIBILITIES**

- 3.1 Councils have a statutory duty in terms of the Education (Scotland) Act 1980 to make adequate and efficient provision of school education across their entire area for the current school population and future pattern of demand. The Council's School Estate Management Plan, approved by the Lifelong Learning Committee of Perth and Kinross Council in November 2007, provides information on the whole of the school estate and provides information about overall objectives and future priorities within Perth and Kinross Council.
- 3.2 Councils also have a statutory responsibility in terms of the Local Government in Scotland Act 2003 to achieve best value. In doing so, consideration must be given to occupancy as buildings are expensive resources. To achieve best value and optimum efficiency, the minimum number of buildings is required to deliver Council services to a particular locality. The organisation of the school estate is therefore kept under regular review, including the need for school provision and other factors, such as altering catchment areas and the implementation of shared headships.

### **4. VISION**

- 4.1 Perth and Kinross Council works to enhance quality of life, make best use of public resources and ensure continuously improving services. Perth and Kinross Council's corporate strategy "Securing the Future" aims to ensure that individuals, families and communities experience the best possible outcomes from a range of services. Perth and Kinross Council has a strong identity and clear priorities which everyone works together to achieve, creating areas which are vibrant and successful; safe, secure, healthy and sustainable environments; educated, responsible and informed citizens; confident and active communities; and places where people are nurtured and supported.
- 4.2 This approach reflects the Single Outcome Agreement National Outcome 15 that "Our public services are high quality, continually improving, efficient and responsive to local people's needs", and the Local Outcome that "Our services will be responsive, of high quality and continually improving". This report also links with the School Estate Management Plan, Education and Children's Services Policy Framework Maximising Resources and with the Education and Children's Services objective to develop the range and quality of learning experiences for all.

## **5. STRALOCH AND THE LOCAL AREA**

- 5.1 Straloch and the local area are sparsely populated. Straloch is a small dispersed village lying at the foot of the Cairngorm mountain range. It lies within the Forest of Clunie Site of Special Scientific Interest (SSSI) and Special Protection Area (SPA) that covers many of the farms and estates within the area. Scottish Natural Heritage actively promote moorland management locally and Forest of Clunie is of outstanding interest for a variety of upland breeding birds and is internationally important for hen harrier, osprey, short-eared owl and merlin and is nationally important for black grouse. Many areas around Straloch are designated SSSI for their diversity of grassland flora.
- 5.2 There are various holiday cottages and bed and breakfast establishments which accommodate visitors to this picturesque area throughout the year with the nearby winter sporting facilities at Glenshee. Kindrogan Field Studies Centre is an environmental centre that provides a range of learning opportunities for pupils, individuals and families as well as professional development for environmental professionals, teachers and outdoor leaders. This field studies centre lies less than two miles from Straloch Primary School. Attractions accessible from the area include fishing, mountain biking, walking and golfing (Blairgowrie and Alyth).
- 5.3 In terms of potential new business ventures in the area, enquiries for advice and support to Perth and Kinross Council and Business Gateway have been checked and there have been no enquiries received over the past few years by either.

## **6. STRALOCH PRIMARY SCHOOL**

- 6.1 Straloch Primary School provides non denominational primary education to pupils from the village of Straloch and surrounding area. Appendix 1 (attached) shows the present school catchment area for Straloch Primary School. The school site for Straloch Primary School is attached as Appendix 3. Straloch Primary School is a single teacher school serving the village of Straloch and the local area. The catchment area for the school covers an area of 119.3 square kilometres (46.059 square miles).
- 6.2 The school structure had 1 composite class made up as follows:
- Primary 1-7
- 6.3 Historical and projected pupil roll data for Straloch Primary School is attached at Appendix 5. This data shows that the roll of Straloch Primary School has been falling over the last decade, with pupil numbers unlikely to increase above their present level. As highlighted in paragraph 1.1, the remaining 2 pupils are enrolled by way of placing request and do not live within the catchment area for Straloch Primary School.



- 6.4 Straloch Primary School is classed as a “very remote rural” school under Section 14 of the Schools (Consultation) (Scotland) Act 2010. The classification of rural and remote rural is based on two main criteria, settlement size and accessibility based on drive time. For Straloch Primary School the classification criteria is “Settlements of less than 3,000 people and with a drive time of over 60 minutes to a settlement of 10,000 or more”.
- 6.5 At Straloch Primary School there is a full time Headteacher and there is part-time Headteacher support, classroom assistant, and auxiliary/clerical assistant. The school receives visiting teacher support for Art and PE and janitorial assistance. PE is undertaken at Kirkmichael Village Hall and the all weather pitch at Kirkmichael Primary School and also at the Bannerfield. The school also takes pupils skiing at Glenshee each year, conditions permitting.
- 6.6 Straloch Primary School is part of the single teacher school network where, three times per year, groups of single teacher schools meet to give pupils wider access to a range of social activities.
- 6.7 At the start of the 2010/2011 academic year, Straloch Primary School was operational with 8 pupils, 5 catchment and 3 placing requests, attending the school and 5 other pupils within the Straloch Primary School catchment area attending Kirkmichael Primary School and Pitlochry Primary School as a result of placing requests.
- 6.8 Of the pupils who were attending Straloch Primary School, 3 were entitled to home to school transport as they lived more than 2 miles from the school.
- 6.9 Straloch Primary School main building is single storey attached to a two storey former school house that has now been incorporated to suit the educational needs of the community. The building was built around 1875 and is of roughly squared stone under a pitched roof. The most recent adaptation to the building (1995) was the demolition of the external toilet block and garage. The facilities were replaced with a toilet for disabled people, boys toilets, girls toilets, a cleaner’s store and another store room being built onto the main building.
- 6.10 The ground floor of the school contains a classroom, a GP room, a library, staffroom, office, cloakroom and the aforementioned toilet provision. The first floor accommodation is used by the school for storage of learning resources and other materials.
- 6.11 In terms of asset management, the Straloch Primary School building has been assessed by Perth and Kinross Council Property Services as in a satisfactory condition with some remedial works required to the first floor rooms, the skylights and the boundary walls.
- 6.12 The school site houses the community recycling facilities and a post box is built into the front wall of the school. The school grounds are mainly hard

landscaping and the local estate has made an area of land available to the rear of the school which provides a soft landscape play area.

- 6.13 Throughout Scotland, core facts are gathered and published on school buildings. The definition and assessment categorisations are set by the Scottish Government as follows:

Condition <sup>(1)</sup> -is an assessment of the physical condition of the school and its grounds. Categorisation is as follows:

- A: Good – Performing well and operating efficiently
- B: - Satisfactory – Performing adequately but showing minor deterioration
- C: Poor – Showing major defect and/or not operating adequately
- D: Bad – Life expired and/or serious risk of imminent failure

Suitability <sup>(2)</sup> -is an assessment of the school as a whole, its buildings and its grounds and of the impact these have on learning and teaching, leisure and social activities and the health and well-being of all users. Categorisation is as follows:

- A: Good – Performing well and operating efficiently
- B: Satisfactory – Performing well but with minor problems
- C: Poor – Showing major problems and/or not operating optimally
- D: Poor – Does not support the delivery of services to children and communities

Sufficiency <sup>(1)</sup> -states the occupancy – pupil roll divided by capacity expressed as a percentage.

Source: (1) *Core Facts Building Our Future: Scotland's School Estate 2003*  
(2) *The Suitability Core Fact: Scotland's School Estate 2008*

- 6.14 The condition surveys are undertaken on a three year rolling programme by a Perth and Kinross Council building surveyor team led by a chartered building surveyor. The suitability assessment is undertaken by the Headteacher and validated by Senior Managers within Education and Children's Services. These assessments were undertaken annually until 2010, but it has now been agreed that these will be undertaken every three years unless significant building or operational change has occurred within the school.

- 6.15 The core facts for Straloch Primary School categorise both the building's condition and suitability as B (Satisfactory). The sufficiency (occupancy) of the school at the September 2010 school census was 36.4%.

- 6.16 Expenditure/investment within the buildings at Straloch Primary School over the past three financial years is given below:

	2007/08	2008/09	2009/10
£'s	1,655.13	3,943.66	3,758.95

These figures reflect minor repairs, servicing and maintenance costs at Straloch Primary School.

- 6.17 There are no external community lets; the school is used in the evenings for parents evenings and events organised by the school. The annual school ceilidh takes place at Kindrogan Field Studies Centre.

## **7. KIRKMICHAEL PRIMARY SCHOOL**

- 7.1 Kirkmichael Primary School provides non denominational primary education to pupils from the village of Kirkmichael and surrounding area. Appendix 2 (attached) shows the present school catchment area for Kirkmichael Primary School. The school site for Kirkmichael Primary School is attached as Appendix 4.
- 7.2 Kirkmichael Primary School is a 2 teacher school serving the village of Kirkmichael and the local area. The catchment area for the school covers an area of 109.186 square kilometres (73.431 square miles).
- 7.3 Kirkmichael Primary School is classed as a “remote rural” school under Section 14 of the Schools (Consultation) (Scotland) Act 2010. The classification of rural is based on two main criteria settlement size and accessibility based on drive time. For Kirkmichael Primary School the classification criteria is “*settlements of fewer than 3,000 people and with a drive time of between 30 and 60 minutes to a settlement of 10,000 or more*”.
- 7.4 At Kirkmichael Primary School there is a Headteacher, teacher, Headteacher support, 2 part-time clerical assistants, classroom assistant, 2 early childhood practitioners, support for learning, visiting specialists for expressive arts and PE and janitorial assistance.
- 7.5 Currently (May 2011), 36 pupils attend Kirkmichael Primary School. A statutory consultation is underway on a proposal to close Strone of Cally Primary School and transfer the pupils to Kirkmichael Primary School and redelineate the catchment area. The projected pupil roll data to 2017 generates an additional 1 pupil up to 2013 and no pupils thereafter. The outcome of this statutory consultation exercise is likely to be considered by the Lifelong Learning Committee in August 2011.

7.6 The school structure currently has 2 composite classes made up as follows:

Primary 1-4

Primary 5-7

7.7 Historical and projected pupil roll data for Kirkmichael Primary School is attached at Appendix 6.

7.8 The main school building is a pre-1919 two storey stone building under a pitched slate roof with cast iron gutters and downpipes. The building sits below road level and the site overlooks the river. There is a large outdoor area with a mix of hard and soft landscaping and a multi use games area. The heating is electric. Also on the school site are 4 timber storage sheds.

7.9 The following facilities and accommodation are offered:

- 3 classrooms for primary education
- nursery
- toileting facilities
- staff/resources room
- dining accommodation/ general purpose room
- Headteacher's room
- Small reception office
- Storage

7.10 The core facts for the school categorise both the building's condition and suitability as B (Satisfactory). The sufficiency (occupancy) based on the 2010 school census is 54.2%.

7.11 Expenditure/investment within the school buildings at Kirkmichael Primary School over the past three financial years is given below:

	2007/08	2008/09	2009/2010
£'s	241,317	11,112	13,533

These figures reflect minor repairs, servicing and maintenance costs at Kirkmichael Primary School. The larger figure in 2007/08 reflects the investment of a two room extension at Kirkmichael Primary School that resulted from a recommendation for improving the accommodation at Kirkmichael Primary School in the HMIE report in November 2001. This accommodation houses a nursery class and a primary one class.

7.12 The impact of new housing in the Kirkmichael Primary School catchment area was examined by looking at planning applications lodged with Perth and Kinross Council. As at May 2011, there were 20 approved planning applications for a total of 23 houses. Applying the formula used within

Perth and Kinross of 0.27 of a primary pupil being generated per house, this would equate to a requirement of 6.21 primary pupil places. There are three pending applications for 9 houses which would generate 2.43 primary pupil places which together, when rounded up, would result in 10 potential primary pupil places in total.

- 7.13 In the catchment area of Strone of Cally Primary School which is currently mothballed and pupils rezoned to Kirkmichael Primary School, as at May 2011 there were 6 planning applications for a total of 8 houses. Applying the formula as above, this would equate to a requirement for 2.16 primary pupil places which when rounded up, would result in 3 potential primary pupil places in total.
- 7.14 This would give a potential occupancy at Kirkmichael Primary School of 73.6%.

## **8. THE OPTION FOR CONSULTATION FROM OPTIONS APPRAISAL**

- 8.1 The Options Appraisal has demonstrated that the option for the cessation of education provision at Straloch Primary School represents the best value for education purposes.

## **9. EDUCATIONAL BENEFITS STATEMENT**

### **9.1 Cessation of educational provision at Straloch Primary School and relocation to Kirkmichael Primary School**

- 9.1.1 At the end of June 2011, Straloch Primary School was 'mothballed', as only 2 pupils on the roll were due to be in attendance for session 2011/12, and the pupil roll had been very low for a number of years. These 2 pupils both live outwith the catchment area for Straloch Primary School.
- 9.1.2 The Straloch Primary School catchment area was re-zoned to Kirkmichael Primary School for the period during which Straloch Primary School remains 'mothballed'. Seven pupils from the Straloch catchment area currently attend Kirkmichael Primary School and Pitlochry Primary School as a result of successful placing requests.
- 9.1.3 All staff employed at Straloch Primary School will be re-deployed elsewhere.

#### **9.1.4 The educational benefits of the proposal are as follows:**

**The educational benefits of the proposal are as follows:**

- (i) Kirkmichael Primary School offers a learning environment that encourages high levels of attainment and provides a wide range of opportunities for children to achieve their full potential as successful

learners, confident individuals, responsible citizens and effective contributors.

- (ii) In the primary classes, high standards in English language and mathematics have been maintained over the last three years.

Most children achieve appropriate national levels in reading, writing and mathematics with the majority achieving these earlier than might be expected. Teachers are good at meeting children's learning needs. They interact with children well and give them positive support. In the nursery class children enjoy a range of experiences. Nursery staff take good account of children's individual circumstances and needs.

- (iii) Children are offered a broad range of active, well-planned experiences which help them develop the knowledge and understanding, skills, capabilities and attributes which they need for their mental, emotional, social and physical wellbeing both now and in the future. Children's learning needs are accurately identified and supported.
- (iv) In recent years pupils in Kirkmichael Primary School have been taught in two or three classes composed of a number of children from more than one year group. They benefit from being part of a social context in which they can build relationships with different groups and individuals, develop social skills, meet challenges and exercise responsibilities as members of a social group. They are able to interact and socialise with groups of children of their own age and gender, take part in team activities and move with their peers to secondary school. The children contribute to school improvement through participating in a range of committees such as the pupil council, health and enterprise groups or by acting as junior road safety officers.
- (v) At Kirkmichael Primary School the children benefit from a range of facilities and resources. As well as up to date class and ICT resources there is a separate dining area and an extensive outdoor area which includes a large grassy section, a garden and a multi-use games area which facilitate eco learning and promote health and wellbeing through play and team games. The whole outdoor area is enclosed for children to learn and play together during curricular and play times. The school makes very good use of the school grounds and the local area for outdoor learning in curriculum areas such as science, mathematics and art.
- (vi) Kirkmichael Primary School has a new purpose built nursery / early years classroom block. The co-location of the nursery and primary classes within the same campus enhances the transition process for the children moving from nursery into primary one through joint educational programmes and liaison between the two settings.

- (vii) There is a continual challenge for all schools to deliver a quality improvement agenda and deliver effectively the principles and outcomes of Curriculum for Excellence to enhance the educational experience for the children. At Kirkmichael Primary School, staff are challenged and supported through a range of continuous professional development and review opportunities gained by working and learning with a range of colleagues.

These are offered through a planned programme of development activities and opportunities for quality professional dialogue on an ongoing basis. A collegiate approach to professional engagement amongst all staff, including visiting specialist teachers, is evident within the school. They come together regularly to review and improve practice as a school, with partner services and other schools. This enhances the quality of learning and teaching through shared opportunities to develop effective approaches to learning and teaching and to share and moderate standards.

- (viii) The children from both Straloch Primary School and Kirkmichael Primary School transfer to the same secondary school. There would be no impact on any other secondary school.
- (ix) The present users of Kirkmichael Primary School would not be disadvantaged in any way by the addition of children from Straloch Primary School as there is adequate capacity to cater for the numbers and needs of both groups of children and their parents.
- (x) The likely effects of the proposal and the number of children involved would have limited impact on the current class organisation within Kirkmichael Primary School, which currently sit within the Government class size guidelines.
- (xi) Children will also benefit from access to a range of community facilities which are in close proximity to Kirkmichael Primary School, including the village hall, the Session House, the shop and local businesses.
- (xii) Children will have access to a broad range of extra-curricular activities at both school and Authority level. The school provides a range of lunchtime and after school sports clubs including for example football, netball, gardening, cookery and a website club.
- (xiii) Parents and children at Straloch Primary School will have the opportunity to participate in, and benefit from the work of the Parent Council at Kirkmichael Primary School.
- (xiv) If implemented, the prime consideration for the Council will be to minimise any adverse impact on the learning and teaching of children

from Straloch Primary School catchment area and alleviate the concerns of parents.

In summary:

The children and parents of Straloch Primary School will have access to an educational establishment which meets the needs of all children and which has a comprehensive and well planned approach to taking forward improvement. There is more than enough capacity at Kirkmichael Primary School to fully meet the needs of the Straloch Primary School children without disrupting the learning of the Kirkmichael Primary School children.

## **9.2 Alternatives to the Closure Proposal**

9.2.1 The options considered as a result of the appraisal exercise were:

- a) keep Straloch Primary School open with its existing catchment area.
- b) continued mothballing of Straloch Primary School, subject to regular review.
- c) close Straloch School and transfer the pupils to Kirkmichael Primary School and redelineate the catchment area.

9.2.2 The provision of primary education within Straloch needs to be considered in the context of the needs of the pupils and the local community, both now and in the future.

9.2.3 The following points were all considered when arriving at the decision to propose a statutory consultation exercise be undertaken on the potential closure of Straloch Primary School. The low occupancy at Straloch Primary School is expected to decrease from 36% to a potential 9.1% to 2012 and 0% thereafter. The general population trends in Blairgowrie and the Glens ward do not reveal any increase that would generate additional pupils at Straloch Primary School.

9.2.4 Future plans for potential land use in Perth and Kinross appear in the Main Issues Reports (MIR) for the TAYplan and Perth and Kinross Local Development Plan (LDP). The TAYplan estimates that to meet the population projections, between 910 - 990 additional houses will be constructed per year across Perth and Kinross.

9.2.5 Within the Strathmore and Glens area of the MIR, this would equate to approximately 130 houses per year (at the high end development which is the upper estimate for the number of houses that could be built each year). The new draft LDP will cover the whole of Perth and Kinross now however the Blairgowrie/Eastern area is now referred to as Strathmore and the Glens.



- 9.2.6 The TAYplan sets out a hierarchical approach to directing new development to existing settlements and identifies Blairgowrie and Rattray as proposed second tier settlements which would take the largest proportion of any new development. The remainder of main development will likely be split between the third tier settlements of Alyth and Coupar Angus.
- 9.2.7 In line with the TAYplan MIR, little development is likely to be identified outwith these settlements in the landward LDP and any such development is likely to be of smaller scale.
- 9.2.8 Within the Highland Perthshire area of the MIR, the population projections would equate to approximately 85 houses per year (at the high end development which is the upper estimate for the number of houses which could be built each year).
- 9.2.9 The TAYplan MIR suggests the highest percentage of new housing development in the Highland Perthshire area will be concentrated to the towns of Aberfeldy and Pitlochry.
- 9.2.10 In line with the TAYplan MIR, little development is likely to be identified outwith these settlements in the landward LDP and any such development is likely to be of smaller scale.
- 9.2.11 If Straloch Primary School had not been mothballed, the highest projected roll for Straloch School between 2010 and 2017 was anticipated to be 2 pupils in 2012, falling to no pupils between 2013 and 2017.
- 9.2.12 The table below shows the potential future pupil numbers at both Straloch Primary School and Kirkmichael Primary School:

	Projected Pupils <sup>1</sup>	Potential Pupils <sup>2</sup>	Total
Straloch Primary School	2	0	2
Kirkmichael Primary School <sup>3</sup>	40	13	53
Total	42	13	<b>55</b>

<sup>1</sup>Highest projected pupil numbers to 2017/2018

<sup>2</sup>Potential pupils generated from known planning applications

<sup>3</sup>Kirkmichael Primary School figures include pupil numbers from mothballed Strone of Cally Primary School

- 9.2.13 The possible potential primary pupils that could require primary education within the Straloch and Kirkmichael Primary Schools combined catchment area is 55 pupils. This would represent occupancy of 76.4% at Kirkmichael Primary School, (these figures assume the closure of Strone of Cally).

- 9.2.14 The size of the catchment area for Straloch Primary School is smaller than Kirkmichael Primary School catchment area (both pre and post Strone of Cally). The size of the catchment area for Straloch Primary School is not unusual for a rural school in Perth and Kinross.
- 9.2.15 Seven of the Straloch Primary School catchment pupils already attend Kirkmichael Primary School and Pitlochry Primary School as a result of successful placing requests.
- 9.2.16 A travel distance of 3.8 miles is not an unreasonable distance to expect children to travel for primary school education in rural areas. Some pupils who attend Kirkmichael Primary School as a result of successful placing requests already travel further than this distance. Other catchment areas in Perth & Kinross also have such a travel distance within them.
- 9.2.17 It is recognised that adverse weather in the winter currently impacts on travel arrangements in this area. It is not unusual for rural schools in the Highland and Blairgowrie Wards to be affected by severe weather. Headteachers take into account the local circumstances when deciding to close the school and/or send pupils home early. All schools in Perth and Kinross have an emergency closure plan for severe weather in place which is drawn up by the Headteacher following a risk assessment.
- 9.2.18 To date, there have been 5 school closure days in session 2010/11 due to unprecedented severe weather affecting the whole of Perth and Kinross where all schools were completely closed. This matter is not considered to be such an issue that it materially affects the proposal as localised severe weather affects a wider range of schools than those affected by this proposal.
- 9.2.19 If Straloch Primary School was left mothballed on an indefinite basis, Perth and Kinross Council would incur annual costs to maintain the building. Unoccupied buildings can deteriorate more rapidly than operational premises and can become a focus for opportunistic crimes and/or targets for vandalism whether the premises are located in urban or rural areas. Repair works to rectify possible issues have not been included in the costings within this report.

### **9.3 Likely effect on the local community**

- 9.3.1 Although Straloch Primary School is situated within a small rural community there is limited community engagement with Perth and Kinross Council within the area, and it is believed that this proposal will not adversely impact on local, social or economic activities. The school is mainly utilised for parent events. There are no recorded events of the school being used for any non-parental community events in recent years.

- 9.3.2 Lets at Straloch Primary School are normally arranged for parental activities such as parent evenings and school events. There were no recorded lets by external users for community use in 2010/2011. Lets at Kirkmichael Primary School are also normally arranged for parental activities such as Parent Council meetings, parent evenings and school activities. The number of recorded lets (for Councillor's Surgery) in 2009/2010 was 8. No lets for community use were recorded.
- 9.3.3 Again, every effort will be made to accommodate any activities within Kirkmichael Primary School. The facilities within the Kirkmichael Primary School building are suitable for the promotion of community use outside school hours.
- 9.3.4 As the distance to Kirkmichael Primary School is 3.8 miles, it is believed that there will be no significant impact for the wider community from Straloch Primary School catchment area to access the range of activities which are located at Kirkmichael Primary School.
- 9.3.5 The likely effect of the closure proposal would be on the Parent Teacher Association of Straloch Primary which would require to be wound up in the event of the proposal being implemented.
- 9.3.6 Under section 12 of the Schools (Consultation) (Scotland) Act 2010 it has been assumed that Kirkmichael Primary School is a remote rural school.

This means that although based in a rural setting, the school is within close proximity to Blairgowrie and within reasonable commuting distance to Perth and the amenities which are located in these centres.

#### **9.4 Likely effect caused by different travelling arrangements**

- 9.4.1 There was one transport contract in place to Straloch Primary School as there were 3 pupils entitled to transport. The travelling distance from Straloch Primary School to Kirkmichael Primary School is 3.8 miles and is estimated to take approximately 10 minutes. The Council has estimated that the cost of this additional travelling distance will be nil per annum as the existing contract to Straloch Primary School will no longer be required.
- 9.4.2 The environmental impact of the preferred option if Straloch Primary School was to close and the pupils transfer to Kirkmichael Primary School, would be an environmental impact from the transporting of approximately 2 pupils. However, this would be offset by the need no longer to run the Primary School and no longer provide transport to Straloch Primary School. At Kirkmichael Primary School, the 2 additional pupils could be accommodated without any significant additional impact.

- 9.4.3 Should the proposal be accepted by the Council following the consultation period, staff who reside outwith the area who transfer to Kirkmichael Primary School may be required to travel an additional distance of 3.8 miles to school.
- 9.4.4 If staff are deployed to another educational establishment other than Kirkmichael Primary School, this will be conducted under existing Council terms and conditions with attempts being made, where possible, to minimise any additional distance that they may require to travel.
- 9.4.5 There are currently no community lets by external groups held within Straloch Primary School. Should there be a requirement for community lets in the future, this could involve people travelling to Kirkmichael, although this number is difficult to quantify at this stage as there has been no demand to date.

## **10. CONCLUSION**

- 10.1 In summary, it is proposed that a statutory consultation exercise takes place on a proposal to close Straloch Primary School and transfer the pupils to Kirkmichael Primary School and redelineate the catchment area of Straloch Primary School to Kirkmichael Primary School. Currently, a small number of parents wish to have their child attend this school. All catchment parents have already demonstrated their desire to have their children educated within a neighbouring school through successful placing requests.
- 10.2 Future pupil projections have been considered and Kirkmichael Primary School can accommodate all projected and potential pupils from the combined catchment areas. A higher occupancy level maximises use of the school estate and represents good asset management.
- 10.3 Travel distance to the neighbouring school is not excessive and pupils attending Kirkmichael Primary School already make this journey. However, it is recognised that adverse weather in the winter currently impacts on travel arrangements in this area.
- 10.4 Environmental impacts have been summarised and detailed work will be done as part of the environmental assessment for this proposal.
- 10.5 Local external community groups do not rely on using accommodation in Straloch Primary School for holding community events and closure of the school would have no impact on this. Community capacity building can assist to maintain community contacts.

## **11. CONSEQUENCES OF THE PREFERRED OPTION**

- 11.1 The proposal will result in pupils of Straloch Primary School being part of a learning environment which supports and develops the emotional, social and educational needs of the children. The staff, Parent Councils and community will be consulted fully on the development of plans for the integration of pupils from Straloch Primary School into Kirkmichael Primary School.
- 11.2 Where necessary, any aspect of the implementation of these proposals that impacts on staff will result in consultation with the relevant trade unions and the individuals concerned.
- 11.3 The proposal will result in Straloch Primary School being declared surplus to the requirements of Perth and Kinross Council and the building offered for sale on the open market.
- 11.4 The delineated area of Kirkmichael Primary School will require to be extended to subsume the whole delineated area of Straloch Primary School.

## **12. OTHER ISSUES**

### **Management of Proposals**

- 12.1 It is intended that pupils from Straloch Primary School will be integrated within Kirkmichael Primary School from the start of the 2012/13 academic session, which commences on Tuesday 14 August 2012, or as soon as possible thereafter. This will allow the Council to conduct the necessary consultation in accordance with the relevant statutory frameworks.
- 12.2 It is acknowledged that should the proposal be approved and implemented, forward planning will be required from Education and Children's Services and school senior staff, as a matter of good management practice. This planning is necessary in respect of curriculum delivery, staff management and associated issues.

### 13. FINANCIAL IMPLICATIONS

- 13.1 The annual recurring savings of the preferred option is made up of staff costs and building running costs. The financial implications of this proposal are as follows:

OPTION	SAVINGS
Cease education provision at Straloch Primary School and integrate within Kirkmichael Primary School	£103,207

- 13.2 Financial savings generated from closing Straloch Primary School amount to £103,207 on an annual basis. This saving is predominantly made up of staff costs and building running costs.
- 13.3 On 30 June 2010, the Council approved the report Securing the Future – Towards 2015 and Beyond (Report 10/357 refers). This report set out our continuing strategy for securing the future, aiming to support the delivery of savings through revised service delivery models and ongoing improvement activities in the Council. Education and Children’s Services Service Review Programme within this report contains a re-design project to “review the school estate”.
- 13.4 On 25 August 2010, the Lifelong Learning Committee approved the report Review of School Estate – Straloch Primary School (Report 10/426 refers). This report sought approval to proceed with undertaking an Options Appraisal and, if appropriate, produce a Proposal Paper containing an Educational Benefits Statement in respect of Straloch Primary School.
- 13.5 Therefore, any savings arising from the proposed option to close Straloch Primary School will be allocated against Education and Children’s Services budget savings targets which have currently been set for the period 2011-2014.
- 13.6 This will mitigate against making alternative budget reductions within other areas of Education and children’s Services, with a corresponding reduction in service delivery in that area.
- 13.7 The annual budget is built reflecting cost drivers such as the number of schools, buildings, staff and pupils. If Straloch Primary School were to be closed then future years’ budgets would not contain any allowance for staffing Straloch Primary School and there would be reduced property costs (and possibly no costs should the building be sold in the future). Any per capita budgets relating to individual pupils would continue to be budgeted against the school that these pupils would attend following the closure of Straloch Primary School.

- 13.8 It is envisaged that the existing Straloch Primary School will be offered for sale on the open market. This will minimise security costs and also minimise the risks associated with vacant buildings.

#### **14. RESPONDING TO THE PROPOSAL**

- 14.1 Interested parties are invited to respond to the proposal by making written or electronic submissions on the proposal to Straloch Primary School Consultation, Education and Children's Services, Pullar House, 35 Kinnoull Street, Perth, PH1 5GD, and e-mail: [ECSStatutoryconsultations@pkc.gov.uk](mailto:ECSStatutoryconsultations@pkc.gov.uk)
- 14.2 A form is provided at Appendix 7 for the convenience of those wishing to respond. Its use is not compulsory. However, those wishing to respond are invited to state their relationship with the school – for example, “pupil”, “parent”, “grandparent”, “former pupil”, “teacher in school”, “member of the Community” etc. Responses from the Parent Councils, staff, and Pupil Council are particularly welcome.
- 14.3 Those sending in a response, whether by letter or electronically should know that their response will be open to public scrutiny and may have to be supplied to anyone making a reasonable request to see it.
- 14.4 If they do not wish their response to be publicly available, they should clearly write on the document: “I wish my response to be considered as confidential with access restricted to elected members and council officers of Perth and Kinross Council.” Otherwise, it will be assumed that the person making the response agrees to it being made publicly available.

#### **15. RECOMMENDATIONS**

- 15.1 The Lifelong Learning Committee of Perth and Kinross Council agrees to adopt, for the purpose of consultation, the proposal that:
- (i) Education provision at Straloch Primary School be discontinued with effect from Wednesday 27 June 2012, or as soon as possible thereafter;
  - (ii) Further that the pupils of Straloch Primary School receive their primary school education at Kirkmichael Primary School, from Tuesday 14 August 2012 or as soon as possible thereafter; and
  - (iii) The delineated area of Kirkmichael Primary School be extended to subsume the whole delineated area of Straloch Primary School from Tuesday 14 August 2012.

15.2 It is also recommended that:

- i) interested parties be invited to make written submissions on the proposal to:

Straloch Primary School Consultation, Education and Children's Services, Pullar House, 35 Kinnoull Street, Perth, PH1 5GD

or by e-mail to: [ECSStatutoryconsultations@pkc.gov.uk](mailto:ECSStatutoryconsultations@pkc.gov.uk)

no later than close of business on 28 October 2011.

- ii) the Executive Director (Education and Children's Services) prepares a report on the results of the proposal process for consideration at a future meeting of the Lifelong Learning Committee.

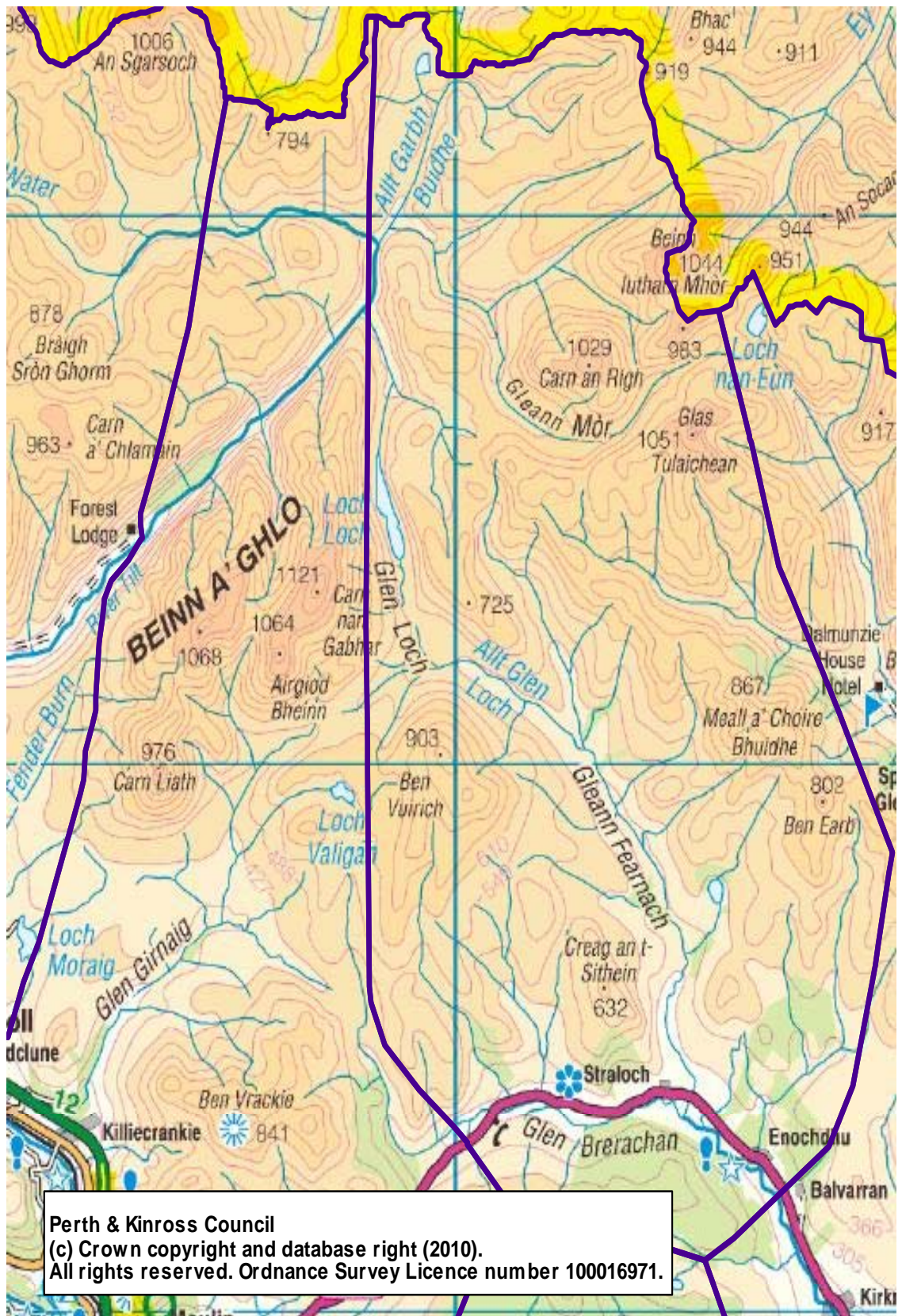
13 May 2011

John Fyffe

Executive Director (Education and Children's Services)

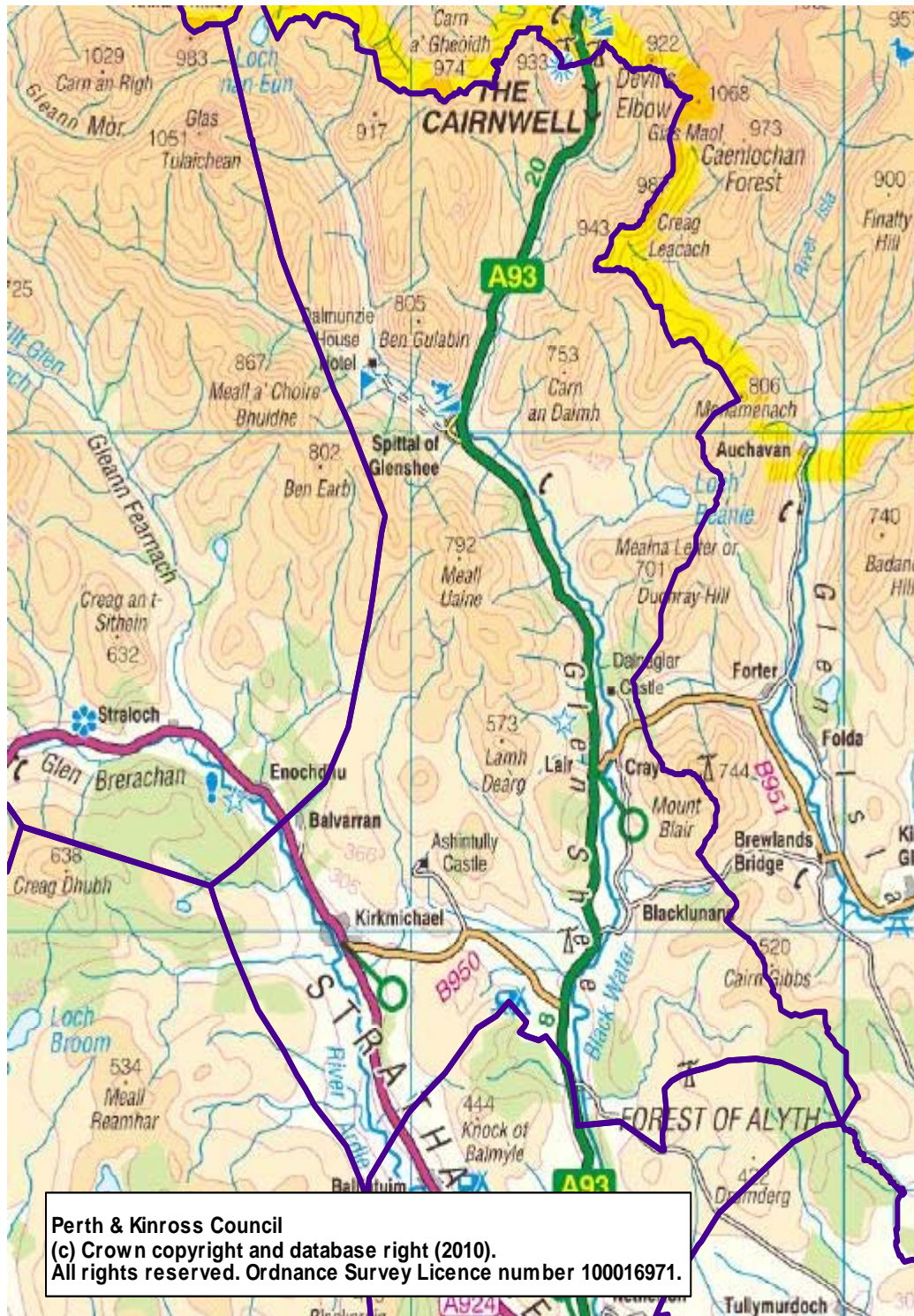


DELINEATED AREA OF STRALOCH PRIMARY SCHOOL

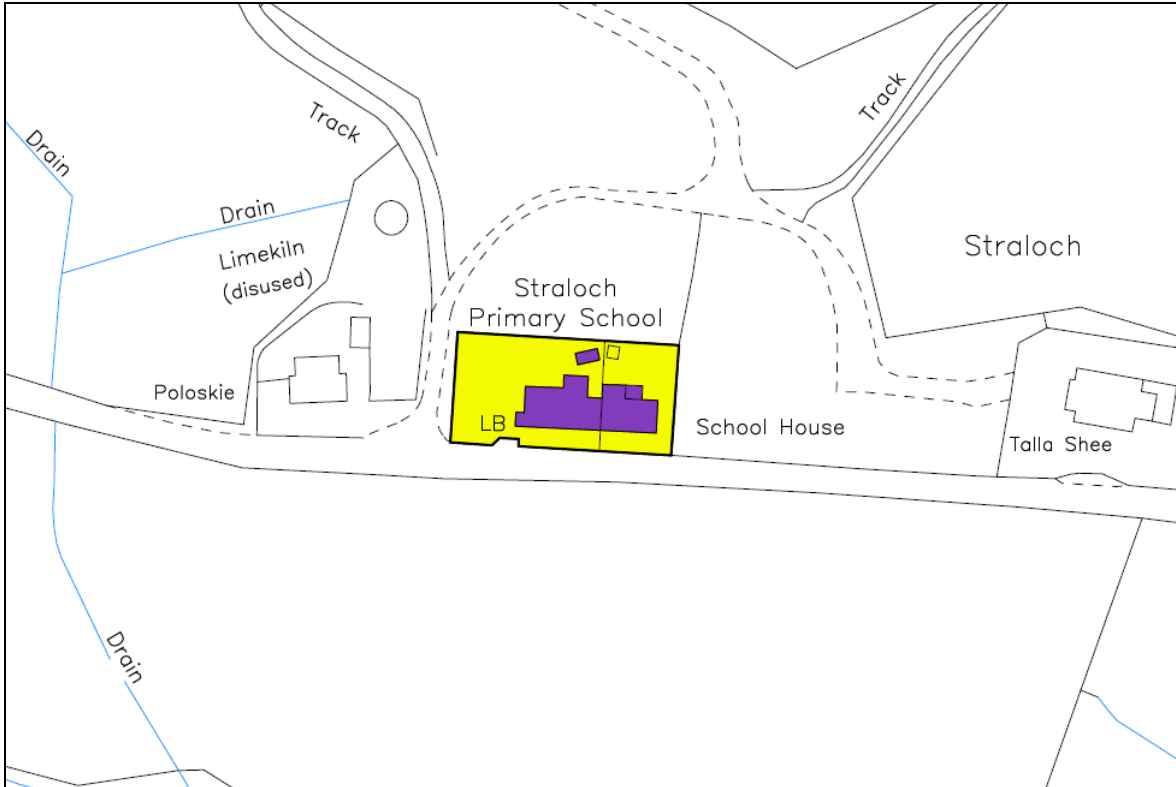




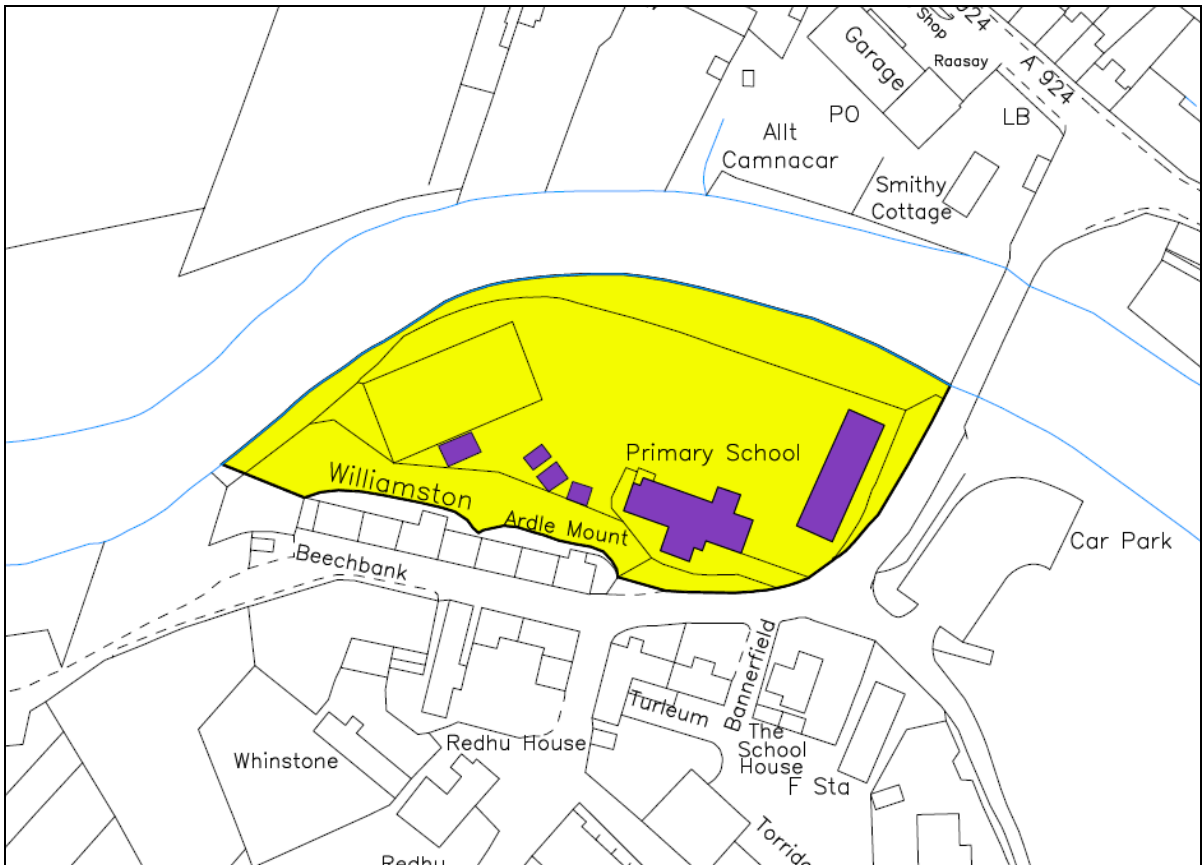
DELINEATED AREA OF KIRKMICHAEL PRIMARY SCHOOL



OUTLINE OF STRALOCH PRIMARY SCHOOL BUILDING AND THE SCHOOL GROUNDS



OUTLINE OF KIRKMICHAEL PRIMARY SCHOOL BUILDING AND THE SCHOOL GROUNDS



### HISTORICAL AND PROJECTED PUPIL ROLL DATA FOR STRALOCH PRIMARY SCHOOL

1999	2000	2001	2002	2003	2004	2005	2006	2007	2008	2009
11	11	11	11	10	7	12	9	8	5	5

Source: [Scottish Government – School Education - Datasets](#)

2010	2011	2012	2013	2014	2015	2016	2017	
8	0	0	0	0	0	0	0	(if mothballed)
8	2	2	0	0	0	0	0	(if reopened)

### ANALYSIS OF SCHOOL/PUPIL INFORMATION

School	Capacity	Roll (Census 2009)	Roll (Census 2010)	Highest Projected Roll – 2017/2018	Condition Rating	Suitability Rating
Straloch	22	5	8	0	B	B

## APPENDIX 6

HISTORICAL AND PROJECTED PUPIL ROLL DATA FOR KIRKMICHAEL  
PRIMARY SCHOOL

1999	2000	2001	2002	2003	2004	2005	2006	2007	2008	2009
37	35	42	45	44	44	42	44	46	47	37

Source: [Scottish Government – School Education - Datasets](#)

2010	2011	2012	2013	2014	2015	2016	2017
39	38	37	36	34	37	40	36

## ANALYSIS OF SCHOOL/PUPIL INFORMATION

School	Capacity	Roll (Census 2009)	Roll (Census 2010)	Highest Projected Roll – 2016/2017	Condition Rating	Suitability Rating
Kirkmichael	72	37	39	40	B	B

## CONSULTEE RESPONSE FORM



## Education and Children's Services

## Response Form

I wish my response to be considered as confidential with access restricted to Elected members and Council Officers of Perth and Kinross Council

## Proposal :

That subject to the outcome of this Proposal exercise :

- Education provision at Straloch Primary School be discontinued with effect from Wednesday 27 June 2012, or as soon as possible thereafter;
- That pupils from Straloch have their education provided at Kirkmichael Primary School, from Tuesday 14 August 2012 or as soon as possible thereafter; and
- That the delineated area of Kirkmichael Primary School be extended to subsume the whole delineated area of Straloch Primary School from Tuesday 14 August 2012.

**This part of the form must be completed for a valid response:**

Name: \_\_\_\_\_ Address: \_\_\_\_\_  
 \_\_\_\_\_  
 \_\_\_\_\_  
 Postcode: \_\_\_\_\_

**Your Interest: (please tick)**

Parent  Child / Young Person  Staff  Other \*

Other: (please specify) \_\_\_\_\_

Elected Member / MSP / MP  Member of Community Council

Please state your views on the proposal (continue overleaf if necessary)

Office Use: \_\_\_\_\_

