

## PERTH AND KINROSS COUNCIL

## Lifelong Learning Committee – 1 June 2011

## STATUTORY CONSULTATION - STRUAN PRIMARY SCHOOL

## Report by Executive Director (Education and Children's Services)

**ABSTRACT**

This Report seeks approval from the Lifelong Learning Committee for the Executive Director (Education and Children's Services) to commence formal consultations on the proposal to close Struan Primary School. It also seeks approval of the Options Appraisal (Appendix A) and Proposal Paper (Appendix B) which are attached.

**1 RECOMMENDATIONS**

It is recommended that the Committee:

- 1.1 Approves the Options Appraisal attached as Appendix A;
- 1.2 Approves the Proposal Paper attached as Appendix B;
- 1.3 Instructs the Executive Director (Education and Children's Services) to formally consult the appropriate bodies and persons in relation to the proposal to close Struan Primary School, in terms of the Schools (Consultation) (Scotland) Act 2010; and
- 1.4 Instructs the Executive Director (Education and Children's Services) to report back to the Committee on the outcome of these consultations in due course.

**2 BACKGROUND**

- 2.1 Education Authorities have a statutory duty in terms of the Education (Scotland) Act 1980 to make adequate and efficient provision of school education across their area. This duty applies in respect of both the current school population and future pattern of demand.

Most importantly, the Education Authority would wish to optimise the educational experience for every pupil by providing:

- a range of social and emotional experiences
- an enriched and broad learning experience
- the best possible education which meets the needs of all learners.

In addition, Councils have a statutory duty to secure best value in terms of the Local Government in Scotland Act 2003.

- 2.2 On 30 June 2010, the Council approved the report Securing the Future – Towards 2015 and Beyond (Report 10/357 refers). This report set out its continuing strategy for securing the future, aiming to support the delivery of savings through revised service delivery models and ongoing improvement activities in the Council. Education and Children's Service's Service Review Programme within this report contains a re-design project to "review the school estate".

- 2.3 Having kept the situation under review, a decision was taken by the Executive Director (Education and Children's Services) in consultation with the Convener of the Lifelong Learning Committee, that Struan Primary School would be "mothballed" (this is a term which means that operations in a school have been suspended with pupils being zoned to another catchment area) from August 2011. The pupil roll at Struan Primary School has continued to decline over a period of years and only 2 pupils were due to be in attendance during school session 2011/12. Both of these pupils live within the catchment area for Struan Primary School.
- 2.4 The Struan Primary School catchment area will be temporarily rezoned to Blair Atholl Primary School for the period where Struan Primary School will be "mothballed". 2 pupils from the Struan Primary School catchment area currently attend Pitlochry High School (Primary) and 2 pupils currently attend Kinloch Rannoch Primary School as a result of successful placing requests.
- 2.5 On 25 August 2010, the Lifelong Learning Committee approved the report Review of School Estate – Struan Primary School (Report 10/427 refers). This report sought approval to proceed with undertaking an Options Appraisal and, if appropriate, produce a Proposal Paper containing an Educational Benefits Statement in respect of Struan Primary School.
- 2.6 An Options Appraisal was therefore undertaken and this is attached as Appendix A.
- 2.7 The findings contained within the Options Appraisal concluded that the preferred option was to close Struan Primary School, transfer the pupils to Blair Atholl Primary School and extend the delineated area of Blair Atholl Primary School to subsume the whole catchment area of Struan Primary School.

### **3 PROPOSALS**

- 3.1 It is therefore proposed to formally embark upon consultations with regard to the closure of Struan Primary School.
- 3.2 This would be undertaken in terms of the Schools (Consultation) (Scotland) Act 2010.
- 3.3 A formal Proposal Paper containing an Educational Benefits Statement has therefore been prepared for distribution. This is attached as Appendix B.
- 3.4 A public meeting will be undertaken by the Convener of the Lifelong Learning Committee and the appropriate Head of Service, supported by officers from Education and Children's Services.
- 3.5 Following this exercise, a report will be submitted to a future Lifelong Learning Committee detailing the outcome of the statutory consultation.

## 4 CONSULTATION

The Head of Democratic Services and Head of Legal Services have been consulted in the preparation of this report. Further consultation on this proposal will be undertaken as part of the statutory consultation exercise.

## 5 RESOURCE IMPLICATIONS

Any resource implications arising from the statutory consultation are likely to relate primarily to staff time and will therefore be contained within the Education and Children's Services revenue budget.

## 6 COUNCIL CORPORATE PLAN OBJECTIVES 2009-2012

6.1 The Council's Corporate Plan 2009-2012 lays out five objectives which provide clear strategic direction, inform decisions at a corporate and service level and shape resources allocation. They are as follows:-

- (i) A Safe, Secure and Welcoming Environment
- (ii) Healthy, Caring Communities
- (iii) A Prosperous, Sustainable and Inclusive Economy
- (iv) Educated, Responsible and Informed Citizens
- (v) Confident, Active and Inclusive Communities

This report relates to all of the above five objectives.

6.2 The report also links to the Education & Children's Services Policy Framework in respect of the following key policy area:

- Change and Improvement

## 7 EQUALITIES IMPACT ASSESSMENT (EqIA)

An equality impact assessment needs to be carried out for functions, policies, procedures or strategies in relation to race, gender and disability and other relevant protected characteristics. This supports the Council's legal requirement to comply with the duty to assess and consult on relevant new and existing policies.

The procedure presented in this report was considered under the Corporate Equalities Impact Assessment process (Eq1A) with the following outcome:

- i) Assessed as **not relevant** for the purposes of Eq1A.

## 8 STRATEGIC ENVIRONMENTAL ASSESSMENT

Strategic Environmental Assessment (SEA) is a legal requirement under the Environmental Assessment (Scotland) Act 2005 that applies to all qualifying plans, programmes and strategies, including policies (PPS).

The matters presented in this report were considered under the Environmental Assessment (Scotland) Act 2005 and no further action is required as it does not qualify as a PPS as defined by the Act and is therefore exempt. Further information on the main environmental impact of the options are detailed in Section 10 of Appendix A.

## 9 CONCLUSION

Following the preparation of a comprehensive Options Appraisal, a Proposal Paper containing an Educational Benefits Statement has been produced which will allow for informed consideration to be given to the proposal to close Struan Primary School.

**JOHN FYFFE**  
**Executive Director (Education and Children's Services)**

**Note:** No background papers, as defined by Section 50D of the Local Government (Scotland) Act 1973 (other than any containing confidential or exempt information) were relied on to any material extent in preparing the above report.

**Contact Officer:** Alan Taylor, Ext 76225, [AMTaylor@pkc.gov.uk](mailto:AMTaylor@pkc.gov.uk)  
**Address of Service:** Pullar House, 35 Kinnoull Street, PERTH, PH1 5GD  
**Date:** 14 April 2011

Appendix A: Options Appraisal Report

Appendix B: Proposal Paper

If you or someone you know would like a copy of this document in another language or format, (on occasion only, a summary of the document will be provided in translation), this can be arranged by contacting *The Communications Manager* E-mail: [ecsgeneralenquiries@pkc.gov.uk](mailto:ecsgeneralenquiries@pkc.gov.uk)



Council Text Phone Number 01738 442573



**PERTH AND KINROSS COUNCIL**

**EDUCATION AND CHILDREN'S SERVICES**

**OPTIONS APPRAISAL REPORT**

**STRUAN PRIMARY SCHOOL**

**11 May 2011**

## **1. Background**

Perth and Kinross Council works to enhance quality of life, make best use of public resources and ensure continuously improving services. Perth and Kinross Council's corporate strategy "Securing the Future" aims to ensure that individuals, families and communities experience the best possible outcomes from a range of services. Perth and Kinross Council has a strong identity and clear priorities which everyone works together to achieve, creating areas which are vibrant and successful; safe, secure, healthy and sustainable environments; educated, responsible and informed citizens; confident and active communities; and places where people are nurtured and supported.

This approach reflects the Single Outcome Agreement National Outcome 15 that "Our public services are high quality, continually improving, efficient and responsive to local people's needs", and the Local Outcome that "Our services will be responsive, of high quality and continually improving". This report also links with the School Estate Management Plan, approved by the Lifelong Learning Committee in November 2007, Education and Children's Services Policy Framework Maximising Resources and with the Education and Children's Services objective to develop the range and quality of learning experiences for all.

Councils, as an Education Authority, have a statutory duty in terms of the Education (Scotland) Act 1980 to make adequate and efficient provision of school education across their entire area for the current school population and future pattern of demand. The Council's School Estate Management Plan provides information on the whole of the school estate and provides information about overall objectives and future priorities within Perth and Kinross Council.

Councils also have a statutory responsibility in terms of the Local Government in Scotland Act 2003 to achieve best value. In doing so, consideration must be given to occupancy as buildings are expensive resources. To achieve best value and optimum efficiency, the minimum number of buildings is required to deliver Council services to a particular locality. The organisation of the school estate is therefore kept under regular review, including the need for school provision and other factors, such as altering catchment areas and the implementation of shared headships.

## **2. Context**

### **2.1 Highland Ward**

Struan Primary School is located in the Highland ward of Perth and Kinross Council and Government statistics are available at this level (Appendix 1).

## 2.2 Population

'The estimated population of Scotland on 30 June 2009 was 5,194,000. The population of Scotland grew by around 25,500 in the 12 months between 1 July 2008 [5,168,500] and 30 June 2009, an increase of 0.5%.<sup>1</sup> The estimated population of Perth and Kinross grew by 1.2% between 2008 (144,180<sup>2</sup>) and 2009 (145,910<sup>3</sup>). The population for the Highland ward was estimated at 9,485<sup>4</sup> in 2009, an increase of 0.1% since the 2008 mid year estimate (9,474<sup>5</sup>).

**Table 1: 2009 Mid Year Population Estimates by Age<sup>6</sup>**

	Children		Working Age		Pensionable Age	
	No	%	No	%	No	%
<b>Highland</b>	1,316	13.87	5,509	58.08	2,660	28.04
<b>Perth and Kinross</b>	24,889	17.06	87,274	59.81	33,747	23.13
<b>Scotland</b>	912,340	17.57	3,248,815	62.55	1,032,845	19.89

Table 1 shows that, based on the estimated population, within Highland Ward there is a lower proportion of children<sup>7</sup> and a higher proportion of people of pensionable<sup>8</sup> age in comparison to both Perth and Kinross and Scotland. It also shows that, within Highland Ward, the estimated population of people of a pensionable age is double that of children in the ward.

Births in the registration district of Pitlochry between 2007 and 2009 are given below. These figures indicate the number of births registered in the area and not necessarily births of people resident in the area.

### Births Registered within Pitlochry Registration District

	2007	2008	2009
<b>Pitlochry</b>	28	38	47

<sup>1</sup> Source: [Scotland's Population 2009: The Registrar General's Annual Review of Demographic Trends 155th Edition](#), GROS Figures in brackets – source: Mid Year Population Estimates, 2008, GROS from [Scottish Neighbourhood Statistics](#)

<sup>2</sup> Mid Year Population Estimate 2008, GROS from [Scottish Neighbourhood Statistics](#)

<sup>3</sup> Mid Year Population Estimate 2009, GROS from [Scottish Neighbourhood Statistics](#)

<sup>4</sup> Mid Year Population Estimate 2009, GROS from [Scottish Neighbourhood Statistics](#)

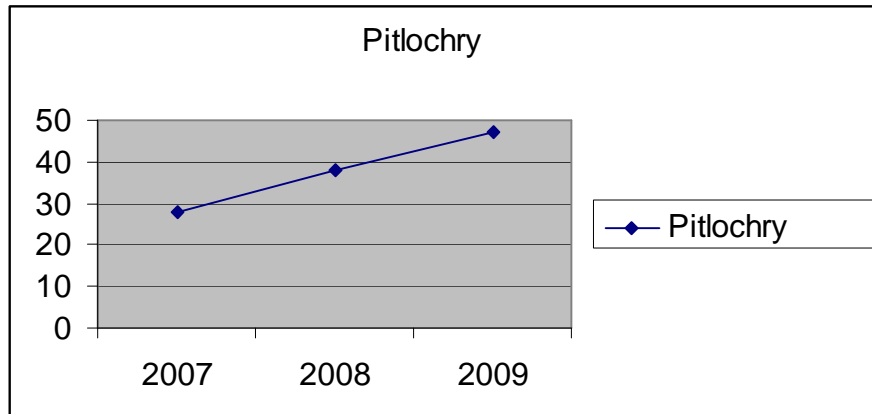
<sup>5</sup> Mid Year Population Estimate 2008, GROS from [Scottish Neighbourhood Statistics](#)

<sup>6</sup> Mid Year Population Estimate 2009, GROS from [Scottish Neighbourhood Statistics](#)

<sup>7</sup> GROS definition Aged 0 - 15

<sup>8</sup> GROS definition – males aged 65 and over, females aged 60 and over

Source: Perth and Kinross Council Registrars



Other ward level statistics are attached as Appendix 1 and reveal that the Highland Ward has a lower percentage of income and employment deprivation compared to Perth and Kinross.

### 3. Initial appraisal and current situation

Detailed analysis is undertaken on an annual basis for each academic year to ensure the capacity of primary schools meet the demands arising from P1 pupils. These meetings take place between January and March with Headteachers, Education Service Managers and staff from Business and Operational Support and Asset Management, to review and agree the class structures within primary schools once the likely number of pupils attending is known. Any potential minor building works required to accommodate the pupil numbers are identified at this time.

In addition, in 2010 all the primary schools within each secondary school catchment area were examined.

All primary schools which had less than 15 pupils and a current occupancy level of below 40% were considered both in detail and in relation to the other schools within the secondary catchment area. The primary schools' projected rolls and the potential numbers of primary pupils that may result from planning applications received were taken into account to provide some indication of the likely future pattern of demand within the primary school catchment areas.

The impact of new housing in the Struan Primary School catchment area was examined by looking at planning applications lodged with Perth and Kinross Council. As at May 2011, there were 4 applications for a total of 6 houses. Applying the formula used within Perth and Kinross of 0.27 of a primary pupil being generated from per house, this would equate to a requirement of 1.62 pupil places, rounded up to 2 potential primary pupil places. This formula is



the average number of primary pupils generated from new house building across the whole of Perth and Kinross.

As a result of this initial consideration of the school estate, Struan Primary School was identified as a primary school which met the criteria of less than 15 pupils and below 40% occupancy. The undernoted table provides the information (updated as at May 2011) used within the initial assessment:

### **Struan Primary School**

School capacity	47 pupils
Pupil roll (September 2009 census)	4 pupils
Pupil roll (September 2010 census)	3 pupils
Current roll (As at May 2011)	3 pupils
Current school occupancy level	6.4%
Highest projected school roll (to 2017/2018)	2 pupils
Projected occupancy using highest projected roll	4.3%
Potential roll including planning applications	4 pupils
Potential occupancy including planning applications	8.5%
Distance to neighbouring school (Blair Atholl)	5.1 miles

### **Blair Atholl Primary School**

School capacity	50 pupils
Pupil roll (September 2009 census)	26 pupils
Current pupil roll (September 2010 census)	25 pupils
Current school occupancy level	50.0%
Highest projected school roll (to 2017/2018)	29 pupils
Projected occupancy using highest projected roll	58.0%
Potential roll including planning applications	33 pupils
Potential occupancy including planning applications	66.0 %
Distance to neighbouring school (Struan)	5.1 miles

Pitlochry Primary School which is 12.1 miles (19.5 kilometres) from Struan Primary School was considered as a possible alternative option for pupils from Struan, however there are capacity issues at Pitlochry Primary School with some stages in the school already full. The potential capacity at Pitlochry Primary School is anticipated to rise to 89% from children in the catchment area. Therefore, in the longer term, accommodation for pupils from Struan could not be guaranteed.

Similarly consideration was given to the option of Kinloch Rannoch Primary School as a possible alternative option for pupils from Struan. However, the travel distance between primary schools at Struan and Kinloch Rannoch is 11.3 miles. In addition to this, Struan Primary School's feeder secondary school is Pitlochry High School and Kinloch Rannoch Primary School's feeder secondary school is Breadalbane Academy. Therefore, to provide a more consistent approach, it would be appropriate to redelineate the catchment area to Blair Atholl Primary School as this school is also a feeder primary

school for Pitlochry High School. Although Pitlochry Primary School and Kinloch Rannoch Primary School were not considered to be viable options, they were mentioned for completeness within this option

The projected school roll is calculated using a recommended Scottish Government formula. This takes the known number of pupils within the school and adds in an average for the numbers of pupils expected over the next seven years based on previous pupil numbers, adjusted to take account of any specific circumstances. The calculation is based on the average of the previous 5 years' Primary 1 intake numbers. The highest potential roll takes the projected school roll and adds the number of pupils reasonably expected to materialise from proposed housing developments in the catchment area. The occupancy level of a school is calculated using the current pupil numbers divided by the school pupil capacity expressed as a percentage.

The distance to the nearest school was calculated using IntraMap, a Geographic Information System (GIS) used within Perth and Kinross Council under licence from Ordnance Survey. The distance measured is the actual school to school distance for this purpose.

The Struan Primary School pupil roll at September 2009 Census was 4 pupils and at September 2010 Census was 3 pupils. The pupil roll for session 2011/2012 will be 2 pupils.

As the pupil roll at Struan Primary School was to fall to 2 pupils at the start of academic session 2011/2012, the decision was taken by the Executive Director (Education and Children's Services), in consultation with the Convener of the Lifelong Learning Committee, that Struan Primary School would be mothballed from August 2011. This is a term which means provision in a school is suspended with pupils zoned to another catchment area. Mutually agreed arrangements were made with the parents of the remaining pupils for session 2011/12.

At May 2011, an additional 4 pupils lived within the Struan Primary School catchment area but, as a result of successful placing requests made by the parents, attended Pitlochry Primary School and Kinloch Rannoch Primary School.

All Perth and Kinross Primary schools have capacities which are adjusted from time to time to reflect any building works or alterations which have taken place within the school. The approved capacity of Struan Primary School is 47 pupils.

The historical and projected pupil roll for Struan School up to 2017/2018 is attached as Appendix 2.

#### **4. Calvine and the local area**

Struan Primary School is located in the village of Calvine, approximately 5 miles west of Blair Atholl, and lies just off the A9. It lies within the Cairngorms National Park area close to the village of Old Struan and near to the confluence of the River Garry and Errochty Water.

The area is sparsely populated and the village is a small rural settlement sitting amidst beautiful scenery, farming and estate land. It lies on the national cycle network and is on the ancient route to Badenoch, with a track from Calvine linking to the Minigaig Pass.

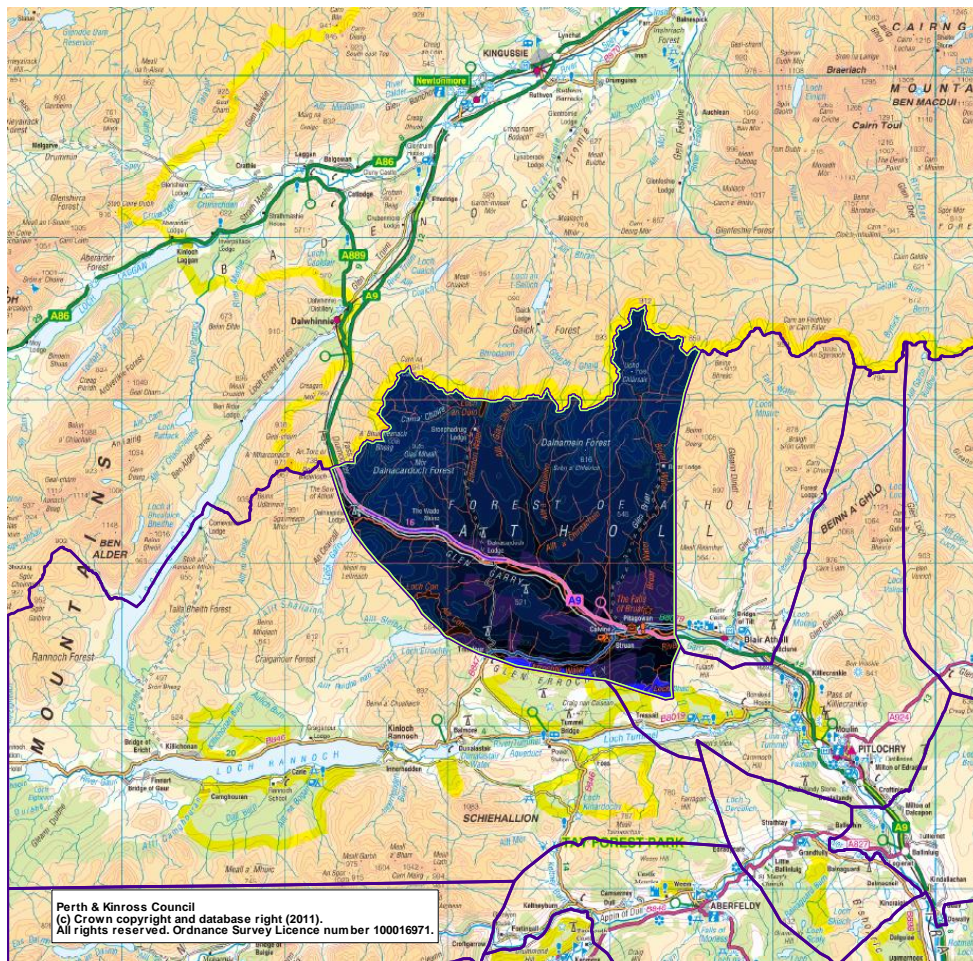
Calvine Holiday Park as well as various holiday cottages and bed and breakfast establishments accommodate visitors to this picturesque area. Hotel accommodation is found in Blair Atholl and Bridge of Tilt as well as Pitlochry. The two Struan Bridges are unusual in that the road bridge that crosses the River Garry is itself crossed by a three arched stone railway viaduct. Struan Church attracts visitors with its Pictish decorated stone, and in the field behind, the historically important remains of an ancient fort and the well (possible) of Tobar Faolan. Other attractions accessible from the area include Falls of Bruar, fishing, mountain biking, wilderness walking, golfing (Blair Atholl) and accessible Munros.

The Struan Hall Trust use Struan Primary School for various activities and in 2010/11 the Trust booked the school on 8 occasions for 2 quiz nights, the children's Christmas party and 5 meetings. The Struan Hall Trust administer funds on behalf of the Struan community and arrange events throughout the year. Struan Hall has been converted into a private home. The local village shop closed and the garage has ceased trading. Struan Inn has also closed and is now converted to a private home. Nearby Old Struan is a settlement of houses only. Therefore this means that Struan Primary School is the last remaining publicly owned resource that serves the local community in this area. Apart from the impact on primary pupils education, consideration has been given later in this report to the impact on the community if Struan Primary School was to close.

In terms of potential new business ventures in the area, enquiries for advice and support to Perth and Kinross Council and Business Gateway have been checked and there have been no enquiries received over the past few years by either.

#### **5. Struan Primary School**

Struan Primary School is a single teacher school serving the village of Calvine and the local area. The catchment area for the school covers an area of 323.684 square kilometres (124.975 square miles) and is detailed on the map overleaf.



Struan Primary School is classed as a “very remote rural” school under Section 14 of the Schools (Consultation) (Scotland) Act 2010. The classification of rural and remote rural is based on two main criteria, settlement size and accessibility based on drive time. For Struan Primary School the classification criteria is “settlements of fewer than 3,000 people and with a drive time of over 60 minutes to a settlement of 10,000 or more”.

Struan Primary School has a shared Headship with Kinloch Rannoch Primary School supported by a principal teacher, Headteacher support, auxiliary/typist/clerical, support for learning assistant, janitorial assistance, cleaner and visiting specialists for expressive arts and physical education.

Struan Primary School currently has 3 pupils attending the school and 4 pupils within the Struan Primary School catchment area attend Pitlochry Primary School and Kinloch Rannoch Primary School as a result of placing requests. The projected pupil roll for Struan Primary School is expected to fall to 1 pupil until 2013/14 and is predicted to then fall to no pupils by 2014/15.

Of the pupils who attend Struan Primary School, all are entitled to home to school transport as they live more than 2 miles from the school.

The pupils from Struan Primary School link with the pupils of Blair Atholl Primary School for activities such as physical education and the pupils travel by car to Blair Atholl Primary School with their teacher. There is a Pupil Council, of which all pupils are members, and a Parent Council at Struan Primary School.

Struan Primary School is a traditionally built 1900s building with a larger two storey 1960s extension. The building has a mixture of block and rendered walls with double glazed upvc windows under a pitched slated roof. The heating is electric. Staff within the school note there is a difficulty in controlling the temperatures within the building due to the large areas of windows. Other buildings on site include a traditional built shelter with rendered stone walls under a pitched metal sheet roof, a timber storage shed and a greenhouse. The school grounds are a mix of hard and soft landscaping. The gardens are well maintained with planters and flower and vegetable beds. Produce in season is sold at the school gate with funds raised used to purchase seeds the following year and buy additional gardening equipment.

The former schoolhouse, which adjoins the grounds of Struan Primary School, was sold in 1990.

Within Struan Primary School, the following facilities and accommodation are offered:

- 2 classrooms for primary education
- toileting facilities
- staffroom
- library
- office accommodation
- dining accommodation
- kitchen

Site plans of Struan Primary School are attached in Appendix 3.

Throughout Scotland, core facts are gathered and published on school buildings. The definition and assessment categorisations are set by the Scottish Government as follows:

Condition <sup>(1)</sup> - is an assessment of the physical condition of the school and its grounds. Categorisation is as follows:

- A: Good – Performing well and operating efficiently
- B: Satisfactory – Performing adequately but showing minor deterioration
- C: Poor – Showing major defects and/or not operating adequately
- D: Bad – Life expired and/or serious risk of imminent failure

Suitability<sup>(2)</sup> - is an assessment of the school as a whole, its buildings and its grounds and of the impact these have on learning and teaching, leisure and social activities and the health and well-being of all users. Categorisation is as follows:

- A: Good – Performing well and operating efficiently
- B: Satisfactory – Performing well but with minor problems
- C: Poor – Showing major problems and/or not operating optimally
- D: Poor – Does not support the delivery of services to children and communities

Sufficiency<sup>(1)</sup> - states the occupancy – pupil roll divided by capacity expressed as a percentage.

Source: (1) *Core Facts Building Our Future: Scotland's School Estate 2003*  
(2) *The Suitability Core Fact: Scotland's School Estate 2008*

The condition surveys are undertaken on a three year rolling programme by a Perth and Kinross Council building surveyor team led by a chartered building surveyor. The suitability assessment is undertaken by the Headteacher and validated by senior managers within Education and Children's Services. These assessments were undertaken annually until 2010, but it has now been agreed that these will be undertaken every three years unless significant building or operational change has occurred within the school.

The core facts for Struan Primary School categorise both the building's condition and suitability as B (Satisfactory). The sufficiency (occupancy) of the school at the September 2010 school census is 6.4%.

Expenditure/investment within the buildings at Struan Primary School over the past three financial years is given below:

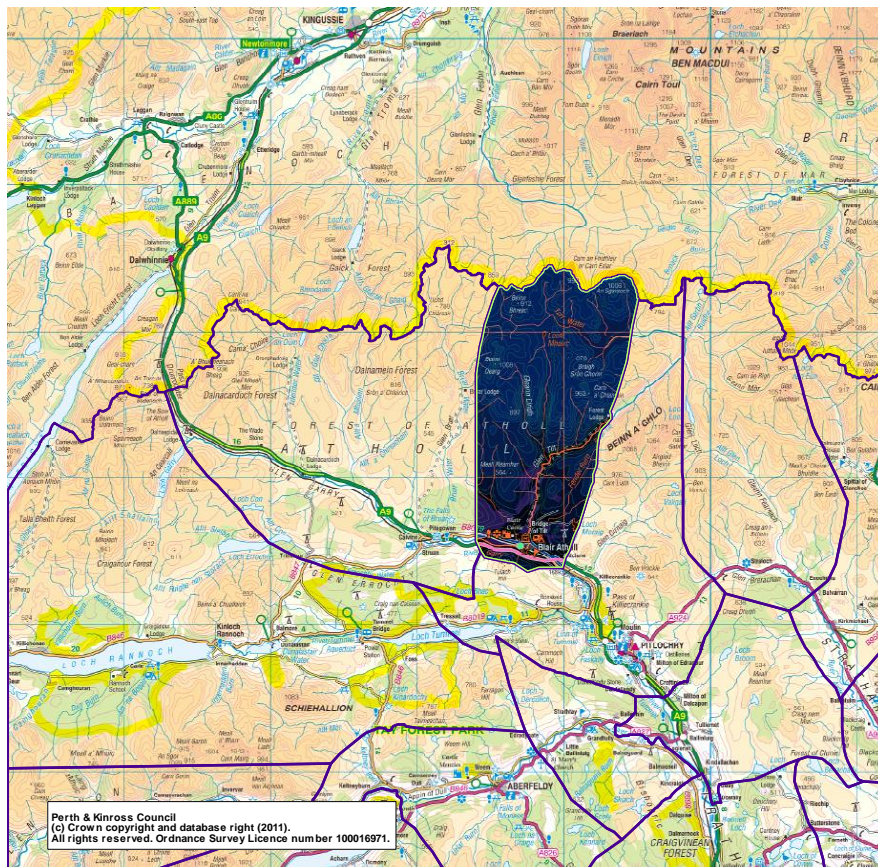
	2007/08	2008/09	2009/10
£'s	10,802	7,734	4,451

These figures reflect minor repairs, servicing and maintenance costs at Struan Primary School. The slightly larger figure in 2007/08 reflects replacement units and worktops in the kitchen to comply with current standards and works in the boys toilets which included repairing the wall and replacing urinals.

## 6. Blair Atholl Primary School

Blair Atholl Primary School serves the village of Blair Atholl and the local area. It is managed under a shared headship arrangement with Logierait Primary School. In addition to the Headteacher there is a principal teacher, teacher, principal teacher relief, classroom assistant, 2 support for learning assistants, early childhood practitioner, clerical assistant and visiting specialists for

physical education, music and art. The catchment area for the school covers an area of 168.584 square kilometres (65.090 square miles) and is highlighted on the map below:



Blair Atholl Primary School is classed as a “very remote rural” school under Section 14 of the Schools (Consultation) (Scotland) Act 2010. The classification of rural and remote rural is based on two main criteria, settlement size and accessibility based on drive time. For Blair Atholl Primary School the classification criteria is “settlements of fewer than 3,000 people and with a drive time of over 60 minutes to a settlement of 10,000 or more”.

Currently, 25 pupils attend Blair Atholl Primary School. The main school building is a single storey building of mixed block work, rendered and glazed curtain walling with concealed internal rainwater downpipes. The windows and external doors are double glazed upvc. The heating system is oil fired. Also on the school site are 2 timber storage sheds, a greenhouse and an electricity sub station.

The following facilities and accommodation are offered:

- 2 classrooms for primary education
- nursery
- toileting facilities
- staff room

- general purpose room/hall
- dining area
- kitchen
- office
- Storage

Site plans of Blair Atholl Primary School are attached in Appendix 4.

The core facts for the school categorise both the building's condition and suitability as B (Satisfactory). The sufficiency (occupancy) based on the 2010 school census is 50.0%.

Expenditure/investment within the school buildings at Blair Atholl Primary School over the past three financial years is given below:

	2007/08	2008/09	2009/10
£'s	5,853.08	9,457.28	9,028.81

These figures reflect minor repairs, servicing and maintenance costs at Blair Atholl Primary School.

The impact of new housing in the Blair Atholl Primary School catchment area was examined by looking at planning applications lodged with Perth and Kinross Council. As at May 2011, the developments of 14 houses were planned. Applying the formula used within Perth and Kinross of 0.27 of a primary pupil per house, this would equate to a requirement of 3.78 primary pupil places, rounded up to 4 pupils. This would give a potential occupancy at Blair Atholl Primary School of 66%.

## 8. Options

The options considered as a result of the appraisal exercise were:

- a) keep Struan Primary School open with its existing catchment area
- b) continued mothballing of Struan Primary School, subject to regular review
- c) close Struan Primary School and transfer the pupils to Blair Atholl Primary School and redelineate the catchment area
- d) close Blair Atholl Primary School and transfer the pupils to Struan Primary School and redelineate the catchment area

The provision of primary education within Struan needs to be considered in the context of the needs of the pupils and the local community, both now and in the future.



The following points were all considered when arriving at the decision to propose a statutory consultation exercise be undertaken on the potential closure of Struan Primary School.

The pupil roll at Struan Primary School over the past ten years has been declining and is not expected to rise in any significant way based on the general population trends in Highland ward. When the potential numbers of pupils arising from housing developments in the area are added to the projected pupil numbers the highest potential pupil roll forecast is 4 giving an occupancy of 8.5%.

Future plans for potential land use in Perth and Kinross appear in the Main Issues Reports (MIR) for the TAYplan and Perth and Kinross Local Development Plan (LDP). The TAYplan estimates that to meet the population projections, between 910 - 990 additional houses will be constructed per year across Perth and Kinross.

Within the Highland area of the MIR of the LDP this would equate to approx 85 houses per year (at the high end development which is the upper estimate for the number of houses that could be built each year).

The TAYplan sets out a hierarchical approach to directing new development to existing settlements and identifies Aberfeldy and Pitlochry as proposed second tier settlements which would take the largest proportion of any new development.

Areas considered for the landward housing requirement in the Highland area are Ballinluig, Birnam, Croftinloan, Fearnan, Kenmore, Kinloch Rannoch and Murthly. Any other development identified in the area is likely to be small scale (less than 5 houses).

Struan Primary School has an extremely low pupil roll with no foreseeable significant increase in pupil numbers arising from any developments in the area. The highest projected pupil roll is anticipated to be 2 pupils in 2011/12 falling to 0 in 2014/15. The highest potential roll anticipates 4 pupils, falling to 2 pupils in 2014/15 if the housing developments are fulfilled.

Within the Struan Primary School catchment area, parents of 4 pupils already send their children to the nearby primary schools at Pitlochry and Kinloch Rannoch. The majority of parents, with school age primary pupils attending Perth and Kinross schools, within the Struan Primary School catchment already prefer to send pupils to other primary schools rather than the nearest school in Blair Atholl. The travel distance from Struan Primary School to Blair Atholl Primary School (distance 5.1 miles) allows the journey to and from school to be undertaken within an acceptable time.

Blair Atholl Primary School has the capacity to accommodate the forecasted pupil numbers from Struan Primary School which would then represent an occupancy rate of 74%.

There are opportunity costs associated with maintaining and running an underused asset such as Struan Primary School. From an asset management perspective, it becomes more efficient to rationalise into one resource with improved sufficiency levels.

Therefore, this options appraisal recommends that primary education services at Struan Primary School be ceased and the service be provided at Blair Atholl Primary School. This will require the catchment area of Blair Atholl Primary School to be redelineated and transport to and from school to be provided to primary children living more than 2 miles from Blair Atholl Primary School.

The table below shows the potential future pupil numbers at both Struan Primary School and Blair Atholl Primary School:

	Projected Pupils <sup>1</sup>	Potential Pupils <sup>2</sup>	Total
Struan Primary School	2	2	4
Blair Atholl Primary School	29	4	33
<b>Total</b>	<b>31</b>	<b>6</b>	<b>37</b>

<sup>1</sup>Highested projected pupil numbers to 2017/2018

<sup>2</sup>Potential pupils generated from known planning applications

The possible potential primary pupils that could require primary education within the Struan Primary School and Blair Atholl Primary Schools combined catchment area is 37 pupils. This would represent occupancy of 74% at Blair Atholl Primary School.

The size of the catchment area for Struan Primary School is larger than Blair Atholl Primary School catchment area. In spite of this, the smaller population generates few pupils for the catchment school and parents choose to submit placing requests to schools with larger pupil numbers.

Four of the Struan Primary School catchment pupils already attend Kinloch Rannoch and Pitlochry Primary Schools as a result of successful placing requests. It is possible that parents of pupils who currently attend rural primary schools may find it more acceptable for their children to continue to be educated in a rural school.

A travel distance of 5.1 miles is not an unreasonable distance to expect children to travel for primary school education in rural areas. The pupils who attend Kinloch Rannoch Primary School and Pitlochry Primary School as a result of successful placing requests already travel further than this distance. Other catchment areas in Perth & Kinross also have such a travel distance within them. However, it is recognised that adverse weather in the winter

currently impacts on travel arrangements in this area. It is not unusual for rural schools in the Highland Ward to be affected by severe weather. Headteachers take into account the local circumstances when deciding to close the school and/or send pupils home early. All schools in Perth and Kinross have an emergency closure plan for severe weather in place which is drawn up by the Headteacher following a risk assessment.

In session 2010/2011, Struan Primary School was completely closed due to severe weather for 6 days. There were 5 school closure days in session 2010/11 due to severe weather affecting the whole of Perth and Kinross where schools were completely closed.

If Struan Primary School was left mothballed on an indefinite basis, Perth and Kinross Council would incur annual costs to maintain the building. Unoccupied buildings can deteriorate more rapidly than operational premises and can become a focus for vandals whether the premises are located in urban or rural areas. Repair works to rectify possible issues have not been included in the costings within this report.

## **9. Resource Implications**

Financial savings generated from closing Struan Primary School amount to £105,182 on an annual basis. This saving is predominantly made up of staff costs and building running costs. The detailed savings are shown in Appendix 5.

On 30 June 2010, the Council approved the report Securing the Future – Towards 2015 and Beyond (Report 10/357 refers). This report set out our continuing strategy for securing the future, aiming to support the delivery of savings through revised service delivery models and ongoing improvement activities in the Council. Education and Children's Services Service Review Programme within this report contains a re-design project to "review the school estate".

On 25 August 2010, the Lifelong Learning Committee approved the report Review of School Estate – Struan Primary School (Report 10/427 refers). This report sought approval to proceed with undertaking an Options Appraisal and, if appropriate, produce a Proposal Paper containing an Educational Benefits Statement in respect of Struan Primary School.

Therefore, any savings arising from the proposed option to close Struan Primary School will be allocated against Education and Children's Services budget savings targets which have currently been set for the period 2011-2014.

This will mitigate against making alternative budget reductions within other areas of Education and Children's Services, with a corresponding reduction in service delivery in that area.

The annual budget is built reflecting cost drivers such as the number of schools, buildings, staff and pupils. If Struan Primary School were to be closed then future years' budgets would not contain any allowance for staffing at Struan Primary School and there would be reduced property costs (and possibly no costs should the building be sold in the future). Any per capita budgets relating to individual pupils would continue to be budgeted against the school that these pupils would attend following the closure of Struan Primary School.

## **10. Environmental Impact**

The main environmental impact of the options are as follows:

- If Struan Primary School was to remain open there would be the continuing impact from needing to power, heat and light the building to provide primary education services.
- If Struan Primary School was to close and the pupils transfer to Blair Atholl Primary School there would be an environmental impact from the transporting of approximately 2 pupils. However, this would be offset by the requirement to no longer run Struan Primary School. At Blair Atholl Primary School, the 2 additional pupils could be accommodated without any significant additional impact.
- If Blair Atholl Primary School was to close and the pupils transfer to Struan Primary School, there would be the environmental impact of transporting 25 pupils on a daily basis to Struan Primary School. However, this would be reduced by the closure of a larger school building.
- Alternative meeting arrangements would need to be put in place to accommodate the current lets held within Struan Primary School. This could involve people attending travelling to Blair Atholl although this number is difficult to quantify at this stage.

## **11. Impact on the Community**

The impact on the vibrancy of the community could be affected as some community events are held within Struan Primary School. There is no other local facility in the settlement within public ownership that could be used to hold events.

Struan Hall Trust held regular meetings at the school on 5 occasions over the last year and regular events are held, two quiz nights and the children's Christmas party.

Struan Hall Trust organise a range of community events for all ages within the local community including outings for young people, children's parties and social events for older people.

The community capacity workers will offer support to the community in developing alternative local opportunities. Highland Perthshire Community Learning and Development Partnership are already in place to support and enable communities within Highland Perthshire to have an active role in implementing and delivering services within their communities. The community capacity building worker aims to strengthen community involvement and local networks by supporting communities to develop the knowledge, skills and confidence as well as the organisational capacity and resources required for community led participation.

## **12. Conclusion**

In summary, it is proposed that a statutory consultation exercise takes place on a proposal to close Struan Primary School and transfer the pupils to Blair Atholl Primary School and redelineate the catchment area of Struan Primary School to Blair Atholl Primary School. Currently, only a small number of Struan Primary School catchment parents wish to have their child attend the local school. The majority of local parents have already demonstrated their desire to have their children educated within neighbouring schools through successful placing requests.

Future pupil projections have been considered and Blair Atholl Primary School can accommodate all projected and potential pupils from the combined catchment areas. A higher occupancy level maximises use of the school estate and represents good asset management.

Travel distance to the neighbouring school is not excessive and pupils attending Blair Atholl Primary School already make this journey. However, it is recognised that adverse weather in the winter currently impacts on travel arrangements in this area.

Environmental impacts have been summarised and detailed work will be done as part of the environmental assessment for this proposal.

Struan Primary School is used for local community events and community capacity building workers could assist to maintain community contacts.

## Ward Profile Information

### Highland (Ward 4)

#### Population

Last updated | 26/04/2011

#### Population Profile

<b>Population Estimates 2009</b>	<b>Ward 4</b>	<b>PKC</b>	<b>Scotland</b>
Total population	9,485	145,910	5,194,000
Population aged 16-19	323	6,887	264,187
% children	13.9%	17.0%	17.6%
% pensionable age	28.0%	23.1%	19.9%
% working age	58.1%	59.8%	62.6%
Male working age	2,976	46,288	1,679,890
Female working age	2,533	40,986	1,568,925

Source: GROS 2009 Small area population estimates, 2010 Population available Sep 2011

Population information is also available from the 2001 Census for Ward 4 and can be accessed from the [Highland Census Profile](#).

The Highland ward is the largest ward in Perth and Kinross in terms of land mass however, the ward contains the smallest population of the 12 wards. The main population centres are the towns of Pitlochry and Aberfeldy which account for around 70% of the population of the ward.

#### Economy

Last updated | 13/01/2011

#### Economic Profile

<b>Economic Activity, Benefits and Tax Credits 2008</b>	<b>Ward 3</b>	<b>Perth and Kinross</b>	<b>Scotland</b>
% population who are income deprived	6%	11%	17%
% working age population who are employment deprived	6%	8%	12%
% population aged 16-24 claiming JSA*	2.3%	3.1%	6.1%
% population aged 25-49 claiming JSA*	1.9%	2.3%	4%

<b>Economic Activity, Benefits and Tax Credits 2008</b>	<b>Ward 3</b>	<b>Perth and Kinross</b>	<b>Scotland</b>
% population aged 50-pensionable age claiming JSA*	1.3%	1.4%	2.4%
% population aged 60+ claiming guaranteed pension credits	9.7%	12.5%	18.4%
Income support claimants (Quarter 2 Apr-Jun 2010)	110	2,980	182,550

\* JSA (*Job Seekers Allowance*)

Source: SNS extracted June 2010

The Highland Ward has a lower percentage of income and employment deprivation compared to the Perth and Kinross average however, numbers of 16-24 year olds claiming JSA is the same as the Perth and Kinross average.

The five largest employers based on staffing numbers in the Highland Ward are:

- House Of Bruar
- Pitlochry Festival Theatre
- Fishers Services Limited
- Atholl Estates
- W B Grieve Groundworks

## Housing

Last updated | 41/10/2010

### Housing Profile

<b>Council Tax Bands - 2009</b>	<b>Ward 4</b>	<b>PKC</b>	<b>Scotland</b>
% of dwellings in band A	9.27%	13.2%	22.4%
% of dwellings in bands A-C	44.33%	51%	62.1%
% of dwellings in bands D-E	34.39%	30.6%	25.8%
% of dwellings in bands F-H	21.28%	18.4%	12.1%

Source: SNS extracted June 2010

<b>House Types - 2009</b>	<b>Ward 4</b>	<b>PKC</b>	<b>Scotland</b>
Total number of dwellings	5,037	68,507	2,479,954
Flats	15.03%	17,794	948,153
Terraced dwellings	11.51%	10,518	512,411
Semi detached	25.73%	14,367	492,320
Detached dwellings	47.49%	25,695	514,480
Unknown attachment	0.24%	133	12,590

*Source: SNS extracted June 2010*

<b>Occupancy</b>	<b>Ward 4</b>	<b>PKC</b>	<b>Scotland</b>
% of dwellings that are occupied	87%	95%	96%
% of dwellings that are vacant	3%	3%	3%
% of dwellings that are second homes	11%	3%	1%
% of dwellings that are occupied exemptions	1%	1%	3%
% of dwellings that are single adult discount	29%	34%	38%

*Source: SNS extracted June 2010*

## **Education**

Last updated | 03/03/2011

## **Pupil Profile**

<b>Pupils - 2009</b>	<b>Ward 4</b>	<b>PKC</b>	<b>Scotland</b>
Primary Pupils - Male	278	4,987	186,450
Primary Pupils - Female	270	4,703	178,369
Primary Pupils - Total	548	9,690	364,819
Secondary Pupils - Male	252	3,915	151,359
Secondary Pupils - Female	224	3,925	150,152
Secondary Pupils - Total	476	7,840	301,511

*Source: SNS extracted June 2010*



## School Rolls

### Individual School Pupil Roll Numbers 2007 2008 2009

Blair Atholl Primary School	27	22	26
Breadalbane Academy (Primary)	205	195	187
Breadalbane Academy (Secondary)	490	497	507
Glenlyon Primary School	11	12	7
Grandtully Primary School	30	27	23
Kenmore Primary School	53	59	61
Kinloch Rannoch Primary School	29	29	30
Logierait Primary School	31	25	30

### Individual School Pupil Roll Numbers 2007 2008 2009

Pitlochry Primary School	175	200	200
Pitlochry High School	198	174	160
Struan Primary School	6	3	4

Source: PKC Annual School Census

## School Information

School	Handbook	Inspection Reports
Blair Atholl Primary School	<a href="#">Blair Atholl School Handbook 2009 [pdf: 233 KB]</a>	<a href="#">Blair Atholl HM Inspection Report 2002 [pdf 38KB]</a>
Breadalbane Academy (Primary)	<a href="#">Breadalbane Academy School Handbook [pdf 307KB]</a>	<a href="#">Breadalbane HM Inspection Report 2006 [pdf: 263Kb]</a>
Breadalbane Academy (Secondary)	<a href="#">Breadalbane Academy School Handbook [pdf 307KB]</a>	<a href="#">Breadalbane HM Inspection Report 2006 [pdf: 263Kb]</a>
Glenlyon Primary School	<a href="#">Glenlyon School Handbook 2009 [PDF: 265Kb]</a>	<a href="#">Glenlyon HM Inspection Report 2008 [PDF: 45Kb]</a>
Grandtully Primary School	<a href="#">Grandtully School Handbook [pdf 206KB]</a>	<a href="#">Grandtully HM Inspection Report 2007 [PDF: 74Kb]</a>
Kenmore Primary School	<a href="#">Kenmore School Handbook 2010 [PDF: 227Kb]</a>	<a href="#">Kenmore HM Inspection Report 2005 [PDF: 47Kb]</a>
Kinloch Rannoch Primary School	Not yet available	<a href="#">Kinloch Rannoch HM Inspection Report 2009 [PDF: 62Kb]</a>
Logierait Primary School	<a href="#">Logierait School Handbook 2010 [pdf 402KB]</a>	<a href="#">Logierait HM Inspection Report 2001 [PDF: 31Kb]</a>

Pitlochry Primary School	<a href="#">Pitlochry Primary School Handbook [PDF: 322Kb]</a>	<a href="#">Pitlochry HM Inspection Report 2008 [PDF: 60Kb]</a>
Pitlochry High School	<a href="#">Pitlochry Primary School Handbook [PDF: 322Kb]</a>	<a href="#">Pitlochry HM Inspection Report 2008 [PDF: 60Kb]</a>
Struan Primary School	<a href="#">Struan School Handbook [PDF:159Kb]</a>	<a href="#">Struan HM Inspection Report 2007 [PDF: 40Kb]</a>

---

## Physical Environment

Last updated | 26/04/2011

## Pollution Profile

Pollution Measures	Ward 4	PKC	Scotland
NO <sup>2</sup> concentration: 2002-2004 (Microgrammes per cubic meter)	4.0	9.3	14.4
PM10 concentration: 2002-2004 (Microgrammes per cubic meter)	10.1	11.9	26.6
% of people within 0-500m of any site derelict pre 1991: 2006	0.2%	5.2%	*
% of people within 0-500m of any derelict site: 2006	3.3%	18.2%	*

*Source: SNS extracted June 2010*  
*\* Information is only measured at Local Authority Level*

## Planning

To view planning application in your area you can search using the Public Access system available through the [main planning pages](#).

## Waste Services

Waste Bin collection dates can be found by using the [find my nearest](#) search.

There are two recycling centres in Ward 4 one is located at Bridge Lane in Pitlochry and the other is at Breadalbane industrial estate in Aberfeldy. The percentage of waste recycled from the Pitlochry site in 2009 was 53% and the Aberfeldy site was 45%. Recycling services in the area are also available to residents through the kerbside recycling scheme

Recycling points are also located at the following locations:

- Kinloch Rannoch (Loch Rannoch Hotel)
- Kinloch Rannoch (Tummel Valley Caravan Park)
- Blair Atholl (Blair Castle Caravan Park)
- Blair Atholl (Bowling Green Car Park)

Pitlochry (Atholl Road Car Park)  
Aberfeldy (Moness Terrace Car Park)

Further details on Waste and recycling services are available from the main [Waste and Recycling Pages](#).

## **Burial Grounds**

The Council is also responsible for maintaining 23 Burial grounds within Highland at the following locations:

Ardtalnaig Burial Ground  
Blair Atholl & Struan Parish Church  
Burnfoot Cemetery, Aberfeldy  
Camghourn Burial Ground  
Kinloch Rannoch Cemetery  
Pitlochry Cemetery  
Dull Parish Church Graveyard  
Fonab Cemetery  
Fortingall Churchyard & War Memorial  
Glenlyon - Churchyard  
Innerhadden Burial Ground  
Kenmore Churchyard  
Killichonan Graveyard  
Kilmaveonaig Churchyard (Blair Atholl)  
Kirkton Churchyard  
Lawers Burial Ground  
Logierait Cemetery  
Logierait Churchyard  
Moulin Churchyard, Pitlochry  
Old Kirk of Weem - Churchyard  
St Lukes Churchyard  
Struan Churchyard  
Tenandry Churchyard

Further information is available on the main [Bereavement Services pages](#).

**Historical and Projected Pupil Roll Data for Struan Primary School**

1999	2000	2001	2002	2003	2004	2005	2006	2007	2008	2009
9	6	7	15	17	16	16	14	6	3	4

Source: Scottish Government – School Education - Datasets

2010	2011	2012	2013	2014	2015	2016	2017
3	2	1	1	0	0	0	0

**Historical and Projected Pupil Roll Data for Blair Atholl Primary School**

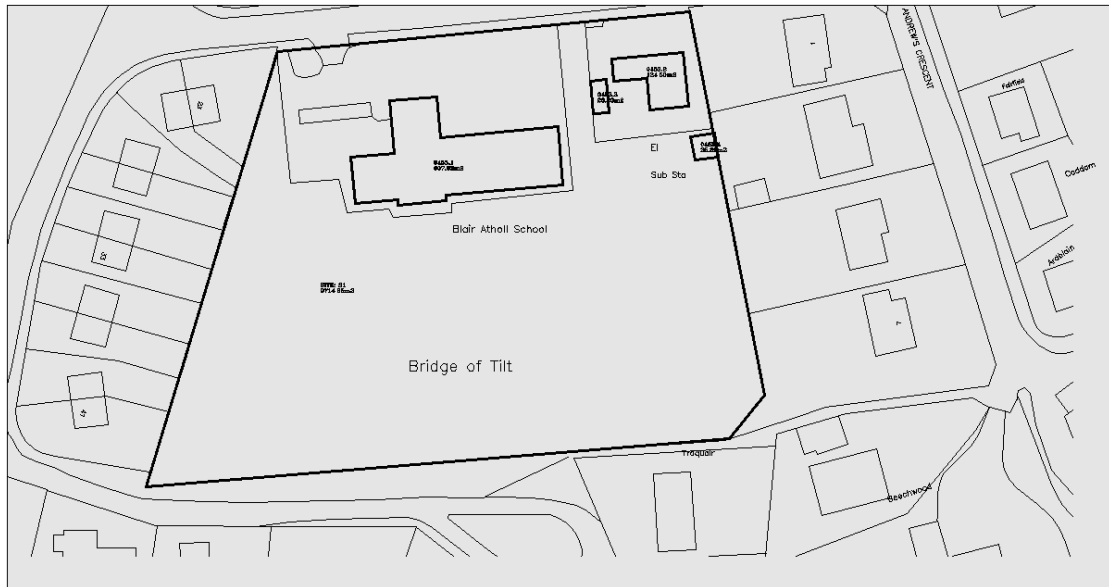
1999	2000	2001	2002	2003	2004	2005	2006	2007	2008	2009
56	60	59	51	42	32	27	26	27	22	26

2010	2011	2012	2013	2014	2015	2016	2017
25	26	29	26	23	23	22	23

### Struan Primary School Site Plan



Blair Atholl Primary School Site plan



Struan Costings	Struan DSM Budget Heading	2011-2012 Budget	Options				Comments:
			A Costs/ (Savings) £	B Costs/ (Savings) £	C Costs/ (Savings) £	D Costs/ (Savings) £	
	Staff	96,059	0	(96,059)	(96,059)	(96,059)	Budget saving as staff will be redeployed into other vacancies
	Supply	971	0	(971)	(971)	(971)	Budget saving as costs based on staffing FTE and not pupil numbers
	Staff Training and Review	950	0	(950)	(950)	(950)	Budget saving as increased pupil numbers would have no impact on Blair Atholl budget allocation
	Property	11,872	0	(11,872)	(11,872)	(35,462)	Budget saving only achievable in full if property sold, otherwise mothball costs incurred (see notes)
	Supplies & Services	814	0	(645)	(645)	(645)	Only small school allowances and flat rate allocations can be saved
	Transport	611	0	(611)	(611)	(611)	Budget saving as costs based on staffing FTE and not pupil numbers
	<b>Total DSM</b>	<b>111,277</b>	<b>0</b>	<b>(111,108)</b>	<b>(111,108)</b>	<b>(134,698)</b>	
	Home to school transport	17,824	0	5,926	5,926	47,156	Estimated Transport costs
	Potential Mothball Costs	0	0	6,000	0	0	) Estimated costs for basic maintenance and water/ energy. Under options C & D mothballing ) costs would also be incurred if the property was not/ until sold
	<b>Net Cost/(Saving)</b>	<b>129,101</b>	<b>0</b>	<b>(99,182)</b>	<b>(105,182)</b>	<b>(87,542)</b>	

**NOTES:****All costs/savings shown are assumed to be full year savings****Option A**

No change to current budgets so no finance implications

**Option B**

Almost all the Devolved School Management (DSM) budget would be saved in this option. This is offset by increased transport costs which are estimated at this stage. Note that any decision to mothball the school will require £6k per annum to be retained to cover these costs.

**Option C**

The saving with this option is equal to option B, excluding mothballing costs.

**Option D**

The savings with this option is equal to option B, except property costs at Blair Atholl would be saved instead of property costs at Struan and transport costs would be significantly higher.

**Other**

Any consequential short term costs arising from the implementation of the proposed option, such as redundancy or the removal of fixtures and fittings are considered minimal and will be met from existing ECS revenue budgets.







## PERTH AND KINROSS COUNCIL

### EDUCATION AND CHILDREN'S SERVICES

#### PROPOSAL PAPER

The following schools are affected by this proposal document:

- **Struan Primary School**
- **Blair Atholl Primary School**

This document has been issued by Perth and Kinross Council for proposal in terms of The Schools (Consultation) (Scotland) Act 2010.

Any Ordnance Survey map data included within this document is provided by Perth and Kinross Council under licence from Ordnance Survey in order to fulfil its public function in relation to this public proposal. Persons viewing this mapping should contact Ordnance Survey Copyright for advice where they wish to licence Ordnance Survey mapping data for their own use.

## DISTRIBUTION

A copy of this document is available on the Perth and Kinross Council website: [www.pkc.gov.uk](http://www.pkc.gov.uk)

A copy of this document will be provided to:

- The Parent Council (if any) of the affected schools
- The parents of the pupils and children at the affected schools
- Parents of children expected to attend an affected school within 2 years of the date of publication of this proposal document
- The teaching and ancillary staff at the affected schools
- The trade union representatives of the above staff
- The Community Councils
- Relevant users of the affected schools
- Elected Members of Perth and Kinross Council
- The Constituency MSP and List MSPs covering the Constituency
- The Constituency MP
- The Executive Director, The Environment Service, Perth and Kinross Council
- Tayside Contracts
- HMIE

A copy of this document is also available from:

- Education and Children's Services, Pullar House, 35 Kinnoull Street, Perth, PH1 5GD
- Council Headquarters, 2 High Street, Perth
- Public libraries in the vicinity of the schools affected
- Local area offices in the vicinity of the schools affected
- The schools affected by the proposal

This document is available in alternative formats or in translated form for readers whose first language is not English. Please apply to Education and Children's Services, Pullar House, 35 Kinnoull Street, Perth, PH1 5GD by telephone on 01738 476200; or by e-mail: [ECSGeneralEnquiries@pkc.gov.uk](mailto:ECSGeneralEnquiries@pkc.gov.uk)

## **SUMMARY OF PROCESS FOR THIS PROPOSAL DOCUMENT**

### **1. Consideration by the Lifelong Learning Committee**

This proposal document has been issued as a result of a decision on 1 June 2011 of the Lifelong Learning Committee of Perth and Kinross Council. This is to seek views on the proposals in this paper.

### **2. Proposal document issued to consultees and published on Council website**

A copy of this document will then be issued free of charge to the consultees listed on the preceding page, and it will also be published on the Council website: [www.pkc.gov.uk](http://www.pkc.gov.uk)

### **3. Publication of advertisement in local newspapers**

An advertisement will be placed in the relevant local newspapers. In addition, there may be announcements related to the Proposal process on the local radio station, Radio Tay.

### **4. Length of consultation period**

An advertisement will be placed in local newspapers on 17 August 2011. The consultation will thereafter run until close of business on 28 October 2011, which includes a period of 40 school days.

### **5. Public meeting**

A public meeting will be held, the details of which are given on Page 6 of this document.

### **6. Involvement of HMIE**

When the proposal document is published, a copy will also be sent to HMIE by the Education Authority. HMIE will also receive a copy of any relevant written representations received by the Authority from any person during the consultation period or, if HMIE agree, a summary of them. HMIE will further receive a summary of any oral representations made to the Authority at the public meeting which will be held and, as available (and so far as otherwise practicable), a copy of any other relevant documentation.

HMIE will then prepare a report on the educational aspects of the proposal not later than 3 weeks after the Authority has sent them all representations and documents mentioned above. For the avoidance of doubt, the 3 week period will not start until after the consultation period has ended. In preparing their report, HMIE may enter the affected schools and make such reasonable enquiries of such people there as they consider appropriate and may make such reasonable enquiries of such other people as they consider appropriate.

## **7. Preparation of consultation report**

The Education Authority will review the proposal having regard to the HMIE Report, written representations that it has received and oral representations made to it by any person at the public meeting.

It will then prepare a consultation report. This report will be published in electronic and printed formats and will be advertised in local newspapers. It will be available on the Council website and from Council Headquarters buildings, both at 2 High Street and Pullar House, Perth, public libraries in the vicinity of the affected schools, local offices in the vicinity of the affected schools as well as the affected schools, free of charge. Anyone who made written representations to the Authority during the consultation period will also be informed about the report.

The report will include a record of the total number of written representations made to the Authority during the consultation period, a summary of the written representations, a summary of the oral representations made at the public meeting, the Authority's response to the HMIE Report as well as any written or oral representations it has received, together with a copy of the HMIE Report and any other relevant information, including details of any alleged inaccuracies and how these have been handled. The report will also contain a statement explaining how the Authority complied with the requirement to review the proposal in light of the HMIE Report and representations (both written and oral) that it received. The consultation report will be published and available for further consideration for a period of 6 weeks.

## **8. Decision**

This report together with any other relevant documentation will be considered by the Lifelong Learning Committee of Perth and Kinross Council, who will come to a decision about whether to implement the proposal.

## **9. Scottish Ministers Call-in**

When the Education Authority has made a final decision to implement the proposal, it will require to notify the Scottish Ministers of that decision, and provide them with a copy of the proposal document and consultation report. This must be done within 6 working days of that decision. The Scottish Ministers have a 6 week period from the date of that final decision to decide if they will call-in the proposal. Within the first 3 weeks of that 6 week period, the Scottish Ministers will take account of any relevant representations made to them by any person. Until the outcome of the 6 week call-in process is known, the Authority cannot proceed to implement the proposal.

If the Scottish Ministers call-in the proposal, they may refuse to consent to the proposal or grant their consent to the proposal subject to conditions or unconditionally.

## **10. Note on Corrections**

If any inaccuracy or omission is discovered in this proposal document either by the Council or any person, the Council will determine if relevant information has been omitted or, there has been an inaccuracy. It will then take appropriate action which may include the issue of a correction or the reissuing of the proposal paper or the revision of the timescale for the consultation period if appropriate. In that event, relevant consultees and HMIE will be advised.

## **11. Note**

This consultation is being conducted having regard to the terms of the Schools (Consultation) (Scotland) Act 2010.

## **PUBLIC MEETING**

A public meeting will be held in Blair Atholl to discuss these proposals. Anyone wishing to attend the public meeting is invited to do so. The meeting, which will be convened by the Education Authority, will be addressed by the Executive Director (Education and Children's Services), or other senior officers of the Council.

The meeting will be an opportunity for interested parties to:

- Hear more about the proposal
- Ask questions about the proposal
- Have their views recorded so that they can be taken into account as part of the consultation process.

The meeting will be held on:

**Venue – Blair Atholl**

**Date – tbc**

**Time – 7.00 pm**

A note will be taken at the meeting of questions and views. This note will be published on the Council website, and a printed copy will be made available upon request.

**PERTH AND KINROSS COUNCIL  
EDUCATION AND CHILDREN'S SERVICES**

**THIS IS A PROPOSAL DOCUMENT**

Proposal :

That subject to the outcome of this proposal exercise :

- Education provision at Struan Primary School be discontinued with effect from Wednesday 27 June 2012, or as soon as possible thereafter;
- That the pupils of Struan Primary School receive their education at Blair Atholl Primary School, from Tuesday 14 August 2012 or as soon as possible thereafter; and
- That the delineated area of Blair Atholl Primary School be extended to subsume the whole delineated area of Struan Primary School from Tuesday 14 August 2012.

## **1. BACKGROUND**

- 1.1 Struan Primary School is a single teacher primary school serving the village of Calvine and the surrounding area. The capacity of Struan Primary School is 47 pupils. At September 2010, there were 3 pupils attending Struan Primary School, with all 3 of these children living in the catchment area. There are 7 pupils in total live within the catchment area for Struan Primary School, however 4 of these pupils attend schools outwith their catchment area. The projected roll at Struan Primary School for August 2011 is to be 2 pupils. Both these pupils live within the catchment area for Struan Primary School.
- 1.2 The situation at Struan Primary School has been carefully monitored and kept under review by the Head of Education Services in terms of pupil numbers, the very small number of pupils in attendance and requests for future pupil enrolments. Only 2 pupils were due to be in attendance during school session 2011/2012. A decision was taken to "mothball" Struan Primary School from August 2011 (this is a term which means that operations in a school have been suspended with pupils being zoned temporarily to another catchment area). Mutually agreed arrangements were made with the parents of the remaining pupils for session 2011/12.
- 1.3 The pupil roll at Struan Primary School has continued to decline over a period of years and only 2 pupils were due to be in attendance during school session 2011/2012.

Struan Primary School catchment area has been temporarily rezoned to Blair Atholl Primary School for the period where Struan Primary School remains “mothballed”.

- 1.4 Four pupils from the Struan Primary School catchment area currently attend Kinloch Rannoch Primary School and Pitlochry Primary School as a result of successful placing requests.

The highest projected roll for Struan Primary School to 2017/2018 is 2 pupils.

- 1.5 Blair Atholl Primary School has a roll of 25 pupils (as at Census 2010) and capacity for 72 pupils. Blair Atholl Primary School is situated 5.1 miles from Struan Primary School.
- 1.6 At its meeting on 25 August 2010, the Lifelong Learning Committee of Perth and Kinross Council approved Report 10/427 by the Executive Director (Education and Children’s Services). It agreed to proceed to undertake an Options Appraisal, and, if appropriate, produce a Proposal Paper containing an Educational Benefits Statement in respect of Struan Primary School.
- 1.7 This followed the preparation of an Options Appraisal which assessed past and current school rolls together with future roll projections across the school estate and determined best value in financial and non-financial terms for the relocation of the service currently provided at Struan Primary School.
- 1.8 The consultation process to be carried out in consequence of the Committee’s decision, and involving Her Majesty’s Inspectorate of Education (HMIE) and the general public, will be in terms of the Schools (Consultation) (Scotland) Act 2010.



## **2. PROPOSAL**

2.1 It is therefore proposed that:

Proposal :

- Education provision at Struan Primary School be discontinued with effect from Wednesday 27 June 2012, or as soon as possible thereafter;
- That pupils from Struan have their education provided at Blair Atholl Primary School, from Tuesday 14 August 2012 or as soon as possible thereafter; and
- The delineated area of Blair Atholl Primary School be extended to subsume the whole catchment area of Struan Primary School from Tuesday 14 August 2012.

## **3. STATUTORY RESPONSIBILITIES**

3.1 Councils have a statutory duty in terms of the Education (Scotland) Act 1980 to make adequate and efficient provision of school education across their entire area for the current school population and future pattern of demand. The Council's School Estate Management Plan, approved by the Lifelong Learning Committee of Perth and Kinross Council in November 2007, provides information on the whole of the school estate and provides information about overall objectives and future priorities within Perth and Kinross Council.

3.2 Councils also have a statutory responsibility in terms of the Local Government in Scotland Act 2003 to achieve best value. In doing so, consideration must be given to occupancy as buildings are expensive resources. To achieve best value and optimum efficiency, the minimum number of buildings is required to deliver Council services to a particular locality. The organisation of the school estate is therefore kept under regular review, including the need for school provision and other factors, such as altering catchment areas and the implementation of shared headships.

## **4. VISION**

4.1 Perth and Kinross Council works to enhance quality of life, make best use of public resources and ensure continuously improving services. Perth and Kinross Council's corporate strategy "Securing the Future" aims to ensure that individuals, families and communities experience the best possible outcomes from a range of services. Perth and Kinross Council has a strong identity and clear priorities which everyone works together to achieve, creating areas which are vibrant and successful; safe, secure, healthy and

sustainable environments; educated, responsible and informed citizens; confident and active communities; and places where people are nurtured and supported.

- 4.2 This approach reflects the Single Outcome Agreement National Outcome 15 that “Our public services are high quality, continually improving, efficient and responsive to local people’s needs”, and the Local Outcome that “Our services will be responsive, of high quality and continually improving”. This report also links with the School Estate Management Plan, Education and Children’s Services Policy Framework Maximising Resources and with the Education and Children’s Services objective to develop the range and quality learning experiences for all.

## **5. CALVINE AND THE LOCAL AREA**

- 5.1 Struan Primary School is located in the village of Calvine, approximately 5 miles west of Blair Atholl, and lies just off the A9. It lies within the Cairngorms National Park area close to the village of Old Struan and near to the confluence of the River Garry and Errochty Water.
- 5.2 The area is sparsely populated and the village is a small rural settlement sitting amidst beautiful scenery, farming and estate land. It lies on the national cycle network and is on the ancient route to Badenoch, with a track from Calvine linking to the Minigaig Pass.
- 5.3 Calvine Holiday Park as well as various holiday cottages and bed and breakfast establishments accommodate visitors to this picturesque area. Hotel accommodation is found in Blair Atholl and Bridge of Tilt as well as Pitlochry. The two Struan Bridges are unusual in that the road bridge that crosses the River Garry is itself crossed by a three arched stone railway viaduct. Struan Church attracts visitors with its Pictish decorated stone, and in the field behind, the historically important remains of an ancient fort and the magical well of Tobar Faolan. Other attractions accessible from the area include Falls of Bruar, fishing, mountain biking, wilderness walking, golfing (Blair Atholl) and accessible Munros.
- 5.4 The Struan Hall Trust use Struan Primary School for various activities and in 2010/11 the Trust booked the school on 8 occasions for 2 quiz nights, the children’s Christmas party and 5 meetings. The local village shop closed and the garage has ceased trading. Struan Inn has also closed and is now converted to a private home. Nearby Old Struan is a settlement of houses only.
- 5.5 In terms of potential new business ventures in the area, enquiries for advice and support to Perth and Kinross Council and Business Gateway have been checked and there have been no enquiries received over the past few years by either.

## **6. STRUAN PRIMARY SCHOOL**

- 6.1 Struan Primary School provides non denominational primary education to pupils from the village of Calvine and surrounding area. Appendix 1 (attached) shows the present school catchment area for Struan Primary School. The school site for Struan Primary School is attached as Appendix 3. Struan Primary School is a single teacher school serving the village of Calvine and the local area. The catchment area for the school covers an area of 323.684 square kilometres (124.975 square miles).
- 6.2 The school structure had 1 composite class made up as follows:  
Primary 1-7
- 6.3 Historical and projected pupil roll data for Struan Primary School is attached at Appendix 5. This data shows that the roll of Struan Primary School has been falling over the last decade, with pupil numbers unlikely to increase above their present level. As highlighted in paragraph 1.1, the remaining 2 pupils live within the catchment area for Struan Primary School.
- 6.4 Struan Primary School is classed as a “very remote rural” school under Section 14 of the Schools (Consultation) (Scotland) Act 2010. The classification of rural and remote rural is based on two main criteria, settlement size and accessibility based on drive time. For Struan Primary School the classification criteria is “settlements of fewer than 3,000 people and with a drive time of over 60 minutes to a settlement of 10,000 or more”.
- 6.5 Struan Primary School has a shared Headship with Kinloch Rannoch Primary School supported by a principal teacher, Headteacher support, auxiliary/typist/clerical, support for learning assistant, janitorial assistance, cleaner and visiting specialists for expressive arts and physical education.
- 6.6 Struan Primary School currently has 3 pupils attending the school and 4 pupils within the Struan Primary School catchment area attend Pitlochry Primary School and Kinloch Rannoch Primary School as a result of placing requests. The projected pupil roll for Struan Primary School is expected to fall to 1 pupil until 2013/14 and is predicted to then fall to no pupils by 2014/15.
- 6.7 Of the pupils who attend Struan Primary School, all are entitled to home to school transport as they live more than 2 miles from the school.
- 6.8 The pupils from Struan Primary School link with the pupils of Blair Atholl Primary School for activities such as physical education and the pupils travel by car to Blair Atholl Primary School with their teacher. There is a Pupil Council, of which all pupils are members, and a Parent Council at Struan Primary School.

- 6.9 Struan Primary School is a traditionally built 1900s building with a larger two storey 1960s extension. The building has a mixture of block and rendered walls with double glazed upvc windows under a pitched slated roof. The heating is electric. Staff within the school note there is a difficulty in controlling the temperatures within the building due to the large areas of windows. Other buildings on site include a traditional built shelter with rendered stone walls under a pitched metal sheet roof, a timber storage shed and a greenhouse.
- 6.10 The school grounds are a mix of hard and soft landscaping. The gardens well maintained with planters and flower and vegetable beds. Produce in season is sold at the school gate with funds raised used to purchase seeds the following year and buy additional gardening equipment.
- 6.11 The former schoolhouse, which adjoins the grounds of Struan Primary School, was sold in 1990.
- 6.12 In terms of asset management, the Struan Primary School building has been assessed by Perth and Kinross Council Property Services as in a satisfactory condition with some remedial works required to the first floor rooms, the skylights and the boundary walls.
- 6.13 The school site houses the community recycling facilities and a post box is built into the front wall of the school. The school grounds are mainly hard landscaping and the local estate has made an area of land available to the rear of the school which provides a soft landscape play area.
- 6.14 Within Struan Primary School, the following facilities and accommodation are offered:
- 2 classrooms for primary education
  - toileting facilities
  - staffroom
  - library
  - office accommodation
  - dining accommodation
  - kitchen
- 6.15 Throughout Scotland, core facts are gathered and published on school buildings. The definition and assessment categorisations are set by the Scottish Government as follows:

Condition <sup>(1)</sup> -is an assessment of the physical condition of the school and its grounds. Categorisation is as follows:

- A: Good – Performing well and operating efficiently
- B: - Satisfactory – Performing adequately but showing minor deterioration

- C: Poor – Showing major defect and/or not operating adequately
- D: Bad – Life expired and/or serious risk of imminent failure

Suitability <sup>(2)</sup> -is an assessment of the school as a whole, its buildings and its grounds and of the impact these have on learning and teaching, leisure and social activities and the health and well-being of all users. Categorisation is as follows:

- A: Good – Performing well and operating efficiently
- B: Satisfactory – Performing well but with minor problems
- C: Poor – Showing major problems and/or not operating optimally
- D: Poor – Does not support the delivery of services to children and communities

Sufficiency <sup>(1)</sup> -states the occupancy – pupil roll divided by capacity expressed as a percentage.

Source: (1) *Core Facts Building Our Future: Scotland's School Estate 2003*  
 (2) *The Suitability Core Fact: Scotland's School Estate 2008*

6.16 The condition surveys are undertaken on a three year rolling programme by a Perth and Kinross Council building surveyor team led by a chartered building surveyor. The suitability assessment is undertaken by the Headteacher and validated by Senior Managers within Education and Children's Services. These assessments were undertaken annually until 2010, but it has now been agreed that these will be undertaken every three years unless significant building or operational change has occurred within the school.

6.17 The core facts for Struan Primary School categorise both the building's condition and suitability as B (Satisfactory). The sufficiency (occupancy) of the school at the September 2010 school census is 6.4%.

6.18 Expenditure/investment within the buildings at Struan Primary School over the past three financial years is given below:

	2007/08	2008/09	2009/10
£'s	10,802	7,734	4,451

These figures reflect minor repairs, servicing and maintenance costs at Struan Primary School. The slightly larger figure in 2007/08 reflects replacement units and worktops in the kitchen to comply with current standards and works in the boys toilets which included repairing the wall and replacing urinals.

- 6.19 There are some community lets held within Struan Primary School. The Struan Hall Trust use Struan Primary School for various activities and in 2010/11 the Trust booked the school on 8 occasions for 2 quiz nights, the children's Christmas party and 5 meetings.

## **7. BLAIR ATHOLL PRIMARY SCHOOL**

- 7.1 Blair Atholl Primary School provides non denominational primary education to pupils from the village of Blair Atholl and surrounding area. Appendix 2 (attached) shows the present school catchment area for Blair Atholl Primary School. The school site for Blair Atholl Primary School is attached as Appendix 4.
- 7.2 Blair Atholl Primary is managed under a shared headship arrangement with Logierait Primary School. In addition to the Headteacher, there is a principal teacher, teacher, principal teacher relief, classroom assistant, 2 support for learning assistants, early childhood practitioner, clerical assistant and visiting specialists for physical education, music and art. The catchment area for the school covers an area of 168.584 square kilometres (65.090 square miles) and is highlighted on the map below:
- 7.3 Blair Atholl Primary School is classed as a "very remote rural" school under Section 14 of the Schools (Consultation) (Scotland) Act 2010. The classification of rural and remote rural is based on two main criteria, settlement size and accessibility based on drive time. For Blair Atholl Primary School the classification criteria is "settlements of fewer than 3,000 people and with a drive time of over 60 minutes to a settlement of 10,000 or more".
- 7.4 Currently (May 2011), 25 pupils attend Blair Atholl Primary School.
- 7.5 The school structure currently has 2 composite classes made up as follows:
- Primary 1 -3  
Primary 4 - 7
- 7.6 Historical and projected pupil roll data for Blair Atholl Primary School is attached at Appendix 6.
- 7.7 The main school building is a single storey building of mixed block work, rendered and glazed curtain walling with concealed internal rainwater downpipes. The windows and external doors are double glazed upvc. The heating system is oil fired. Also on the school site are 2 timber storage sheds, a greenhouse and an electricity sub station.

7.8 The following facilities and accommodation are offered:

- 2 classrooms for primary education
- nursery
- toileting facilities
- staff room
- general purpose room/hall
- dining area
- kitchen
- office
- Storage

7.9 The core facts for the school categorise both the building's condition and suitability as B (Satisfactory). The sufficiency (occupancy) based on the 2010 school census is 50.0%.

7.10 Expenditure/investment within the school buildings at Blair Atholl Primary School over the past three financial years is given below:

	2007/08	2008/09	2009/10
£'s	5,853.08	9,457.28	9,028.81

These figures reflect minor repairs, servicing and maintenance costs at Blair Atholl Primary School.

7.11 The impact of new housing in the Blair Atholl Primary School catchment area was examined by looking at planning applications lodged with Perth and Kinross Council. As at May 2011, the developments of 14 houses were planned. Applying the formula used within Perth and Kinross of 0.27 of a primary pupil per house, this would equate to a requirement of 3.78 primary pupil places, rounded up to 4 pupils. This would give a potential occupancy at Blair Atholl Primary School of 66%.

## **8. THE OPTION FOR CONSULTATION FROM OPTIONS APPRAISAL**

8.1 The Options Appraisal has demonstrated that the option for the cessation of education provision at Struan Primary School represents the best value for education purposes.

## **9. EDUCATIONAL BENEFITS STATEMENT**

### **9.1 Cessation of educational provision at Struan Primary School and relocation to Blair Atholl Primary School**

9.1.1 It has been agreed that Struan Primary School be 'mothballed' at the end of June 2011, as only 2 pupils on the roll were to be in attendance for session 2011/12, and the pupil roll had been very low for a number of years. These 2 pupils both live within the catchment area for Struan Primary School.

9.1.2 The Struan Primary School catchment area has been re-zoned to Blair Atholl Primary School for the period during which Struan Primary School remains 'mothballed'. Four pupils from the Struan catchment area currently attend Kinloch Rannoch Primary School and Pitlochry Primary School as a result of successful placing requests.

9.1.3 All staff employed at Struan Primary School will be re-deployed elsewhere.

#### **9.1.4 The educational benefits of the proposal are as follows:**

- (i) Blair Atholl Primary School and Logierait Primary School are part of a Cluster Headship arrangement and are led and managed by the same headteacher.
- (ii) Blair Atholl Primary School offers a learning environment that encourages high levels of achievement and provides a wide range of opportunities for children to achieve their full potential as successful learners, confident individuals, responsible citizens and effective contributors.
- (iii) In the primary classes, appropriate standards in English language and mathematics have been maintained over the last three years.

Most children achieve appropriate levels in reading, writing and mathematics with some achieving these earlier than might be expected. In the nursery class children enjoy a range of experience. Staff know the children very well and are sensitive to their individual needs.

- (iv) Children are offered a broad range of active, well-planned experiences which help them develop the knowledge and understanding, skills, capabilities and attributes which they need for their mental, emotional, social and physical wellbeing both now and in the future. Children's learning needs are identified and supported.



- (v) In recent years children in Blair Atholl Primary School have been taught in two classes composed of a number of children from more than one year group. They benefit from being part of a social context, in a Cluster Headship setting, in which they can build relationships with different groups and individuals, develop social skills, meet challenges and exercise responsibilities as members of a social group. They are able to interact and socialise with groups of children of their own age and gender, take part in team activities and move with their peers to secondary school. Children are developing a sense of responsibility and citizenship through participating in activities such as junior road safety officers, eco and health committees.
  
- (vi) At Blair Atholl Primary School the children benefit from a range of facilities and resources. As well as up to date class and ICT resources there is a separate dining area and an extensive outdoor area which includes a large grassy section, a woodland garden and a multi-use games area which facilitate eco learning and promote health and wellbeing through play and team games.

The whole outdoor area is enclosed for children to learn and play together during curricular and play times. The school makes very good use of the school grounds and the local area for outdoor learning in curriculum areas such as science, mathematics and art.

- (vii) The co-location of the nursery and primary classes within the same campus enhances the transition process for the children moving from nursery into primary one through joint educational programmes and liaison between the two settings.
  
- (viii) There is a continual challenge for all schools to deliver a quality improvement agenda and deliver effectively the principles and outcomes of Curriculum for Excellence to enhance the educational experience for the children. At Blair Atholl Primary School, staff are challenged and supported through a range of continuous professional development and review opportunities gained by working and learning with a range of colleagues.

These are offered through a planned programme of development activities and opportunities for quality professional dialogue on an ongoing basis with staff from Logierait Primary School. A collegiate approach to professional engagement amongst all staff, including visiting specialist teachers, is evident within the school. They come together regularly to review and improve practice as a school, with partner services and other schools in the Local management Group.

This enhances the quality of learning and teaching through shared opportunities to develop effective approaches to learning and teaching and to share and moderate standards.

- (x) The children from both Struan Primary School and Blair Atholl Primary School transfer to the same secondary school. There would be no impact on any other secondary school.
- (ix) The present users of Blair Atholl Primary School would not be disadvantaged in any way by the addition of children from Struan Primary School as there is adequate capacity to cater for the numbers and needs of both groups of children and their parents.
- (x) The likely effects of the proposal and the number of children involved would have limited impact on the current teaching sets within Blair Atholl Primary School, which currently sit within the Government class size guidelines.
- (xi) Children will also benefit from access to a range of community facilities which are in close proximity to Blair Atholl Primary School, including the local museum, the shop and local businesses and Blair Castle and grounds.
- (xii) Children will have access to a broad range of extra-curricular activities at both school and Authority level. In the past year, the school has provided a range of clubs and activities including for example curling, cycling, netball, astronomy, cookery, art and music.
- (xiii) Parents and children at Struan Primary School will have the opportunity to participate in, and benefit from the work of the Parent Council at Blair Atholl Primary School.
- (xiv) If implemented, the prime consideration for the Council will be to minimise any adverse impact on the learning and teaching of children from Struan Primary School catchment area and alleviate the concerns of parents.

In summary:

The children and parents of Struan Primary School will have access to an educational establishment which has a well planned and committed approach to taking forward improvement. There is more than enough capacity at Blair Atholl Primary School to fully meet the needs of the Struan Primary School children without disrupting the learning of the Blair Atholl Primary School children.

## 9.2 Alternatives to the Closure Proposal

9.2.1 The options considered as a result of the appraisal exercise were:

- a) keep Struan Primary School open with its existing catchment area
- b) mothball Struan Primary School, subject to regular review
- c) close Struan Primary School and transfer the pupils to Blair Atholl Primary School and redelineate the catchment area
- d) close Blair Atholl Primary School and transfer the pupils to Struan Primary School and redelineate the catchment area

9.2.2 The provision of primary education within Struan needs to be considered in the context of the needs of the pupils and the local community, both now and in the future.

9.2.3 The following points were all considered when arriving at the decision to propose a statutory consultation exercise be undertaken on the potential closure of Struan Primary School. The pupil roll at Struan Primary School over the past ten years has been declining and is not expected to rise in any significant way based on the general population trends in Highland ward. When the potential numbers of pupils arising from housing developments in the area are added to the projected pupil numbers the highest potential pupil roll forecast is 4 giving an occupancy of 8.5%.

9.2.4 Future plans for potential land use in Perth and Kinross appear in the Main Issues Reports (MIR) for the TAYplan and Perth and Kinross Local Development Plan (LDP). The TAYplan estimates that to meet the population projections, between 910 - 990 additional houses will be constructed per year across Perth and Kinross.

9.2.5 Within the Highland area of the MIR of the LDP this would equate to approx 85 houses per year (at the high end development which is the upper estimate for the number of houses that could be built each year).

9.2.6 The TAYplan sets out a hierarchical approach to directing new development to existing settlements and identifies Aberfeldy and Pitlochry as proposed second tier settlements which would take the largest proportion of any new development.

9.2.7 Areas considered for the landward housing requirement in the Highland area are Ballinluig, Birnam, Croftinloan, Fearnan, Kenmore, Kinloch Rannoch and Murthly. Any other development identified in the area is likely to be small scale (less than 5 houses).

9.2.8 If Struan Primary School had not been mothballed, the highest projected roll for Struan Primary School between 2011 and 2017 was anticipated to be 2 pupils in 2011, falling to no pupils between 2014 and 2017.

9.2.9 The table below shows the potential future pupil numbers at both Struan Primary School and Blair Atholl Primary School:

	Projected Pupils <sup>1</sup>	Potential Pupils <sup>2</sup>	Total
Struan Primary School	2	2	4
Blair Atholl Primary School	29	4	33
<b>Total</b>	<b>31</b>	<b>6</b>	<b>37</b>

<sup>1</sup>Highest projected pupil numbers to 2017/2018

<sup>2</sup>Potential pupils generated from known planning applications

9.2.10 The possible potential primary pupils that could require primary education within the Struan Primary School and Blair Atholl Primary Schools combined catchment area is 37 pupils. This would represent occupancy of 74% at Blair Atholl Primary School.

9.2.11 The size of the catchment area for Struan Primary School is larger than Blair Atholl Primary School catchment area. In spite of this, the smaller population generates few pupils for the catchment school and parents choose to submit placing requests to schools with larger pupil numbers.

9.2.12 Four of the Struan Primary School catchment pupils already attend Kinloch Rannoch and Pitlochry Primary Schools as a result of successful placing requests. It is possible that parents of pupils who currently attend rural primary schools may find it more acceptable for their children to continue to be educated in a rural school.

9.2.13 A travel distance of 5.1 miles is not an unreasonable distance to expect children to travel for primary school education in rural areas. The pupils who attend Kinloch Rannoch Primary School and Pitlochry Primary School as a result of successful placing requests already travel further than this distance. Other catchment areas in Perth & Kinross also have such a travel distance within them.

9.2.14 It is recognised that adverse weather in the winter currently impacts on travel arrangements in this area. It is not unusual for rural schools in the Highland Ward to be affected by severe weather. Headteachers take into account the local circumstances when deciding to close the school and/or send pupils home early. All schools in Perth and Kinross have an emergency closure plan for severe weather in place which is drawn up by the Headteacher following a risk assessment.

9.2.15 To date, there have been 5 school closure days in session 2010/11 due to unprecedented severe weather affecting the whole of Perth and Kinross where all schools were completely closed. This matter is not considered to be such an issue that it materially affects the proposal as localised severe weather affects a wider range of schools than those affected by this proposal.

9.2.16 If Struan Primary School was mothballed on an indefinite basis, Perth and Kinross Council would incur annual costs to maintain the building. Unoccupied buildings can deteriorate more rapidly than operational premises and can become a focus for vandals whether the premises are located in urban or rural areas. Repair works to rectify possible issues have not been included in the costings within this report.

### **9.3 Likely effect on the local community**

9.3.1 Although Struan Primary School is situated within a small rural community there is limited community engagement with Perth and Kinross Council within the area, and it is believed that this proposal will not adversely impact on local, social or economic activities.

9.3.2 Should the proposal be accepted by the Council following the consultation period, the community capacity workers will offer support to the community in developing alternative local opportunities. Highland Perthshire Community Learning and Development Partnership is already in place to support and enable communities within Highland Perthshire to have an active role in implementing and delivering services within their communities. The community capacity building worker aims to strengthen community involvement and local networks by supporting communities to develop the knowledge, skills and confidence as well as the organisational capacity and resources required for community led participation.

9.3.3 Lets at Struan Primary School are normally arranged for community activities and events. There were 8 recorded lets for community use by the Struan Hall Trust in 2010/2011. Lets at Blair Atholl Primary School are also normally arranged for parental activities such as Parent Council meetings, parent evenings and school activities. The number of recorded lets (for Councillor's Surgery) in 2009/2010 was 8. No lets for community use were recorded.

9.3.4 Again, every effort will be made to accommodate any activities within Blair Atholl Primary School. The facilities within the Blair Atholl Primary School building are suitable for the promotion of community use outside school hours.

9.3.5 As the distance to Blair Atholl Primary School is 5.1 miles, it is believed that there will be no significant impact for the wider community from Struan Primary School catchment area to access the range of activities which are located at Blair Atholl Primary School.

- 9.3.6 The likely effect of the closure proposal would be on the Parent Council of Struan Primary which would require to be wound up in the event of the proposal being implemented.
- 9.3.7 Under section 12 of the Schools (Consultation) (Scotland) Act 2010 it has been assumed that Blair Atholl Primary School is a very remote rural school.

This means that it is based in a rural setting, and the commuting time is a drive time of over 60 minutes to Perth and the amenities which are located there.

#### **9.4 Likely effect caused by different travelling arrangements**

- 9.4.1 There was one transport contract in place to Struan Primary School as there were 3 pupils entitled to transport. The travelling distance from Struan Primary School to Blair Atholl Primary School is 5.1 miles and is estimated to take approximately 12 minutes. The Council has estimated that the additional cost of this travelling distance will be £5926 per annum.
- 9.4.2 The environmental impact of the preferred option if Struan Primary School was to close and the pupils transfer to Blair Atholl Primary School, would be an environmental impact from the transporting of approximately 2 pupils. However, this would be offset by the need no longer to run the Primary School and no longer provide transport to Struan Primary School. At Blair Atholl Primary School, the 2 additional pupils could be accommodated without any significant additional impact.
- 9.4.3 Should the proposal be accepted by the Council following the consultation period, staff who reside outwith the area who transfer to Blair Atholl Primary School may be required to travel an additional distance of 5.1 miles to school.
- 9.4.4 If staff are deployed to another educational establishment other than Blair Atholl Primary School, this will be conducted under existing Council terms and conditions with attempts being made, where possible, to minimise any additional distance that they may require to travel.
- 9.4.5 Alternative meeting arrangements would need to be put in place to accommodate the current lets held within Struan Primary School. This could involve people attending travelling to Blair Atholl, although this number is difficult to quantify at this stage.

## **10. CONCLUSION**

- 10.1 In summary, it is proposed that a statutory consultation exercise takes place on a proposal to close Struan Primary School and transfer the pupils to Blair Atholl Primary School and redelineate the catchment area of Struan Primary School to Blair Atholl Primary School. Currently, only a small number of Struan Primary School catchment parents wish to have their child attend the local school. The majority of local parents have already demonstrated their desire to have their children educated within neighbouring catchment schools through successful placing requests.
- 10.2 Future pupil projections have been considered and Blair Atholl Primary School can accommodate all projected and potential pupils from the combined catchment areas. A higher occupancy level maximises use of the school estate and represents good asset management.
- 10.3 Travel distance to the neighbouring school is not excessive and pupils attending Blair Atholl Primary School already make this journey. However, it is recognised that adverse weather in the winter currently impacts on travel arrangements in this area.
- 10.4 Environmental impacts have been summarised and detailed work will be done as part of the environmental assessment for this proposal.
- 10.5 Struan Primary School is used for local community events and community capacity building workers could assist to maintain community contacts.

## **11. CONSEQUENCES OF THE PREFERRED OPTION**

- 11.1 The proposal will result in pupils of Struan Primary School being part of a learning environment which supports and develops the emotional, social and educational needs of the children. The staff, Parent Councils and community will be consulted fully on the development of plans for the integration of pupils from Struan Primary School into Blair Atholl Primary School.
- 11.2 Where necessary, any aspect of the implementation of these proposals that impacts on staff will result in consultation with the relevant trade unions and the individuals concerned.
- 11.3 The proposal will result in Struan Primary School being declared surplus to the requirements of Perth and Kinross Council and the building offered for sale on the open market.
- 11.4 The delineated area of Blair Atholl Primary School will require to be extended to subsume the whole delineated area of Struan Primary School.

## **12. OTHER ISSUES**

### **Management of Proposals**

- 12.1 It is intended that pupils from Struan Primary School will be integrated within Blair Atholl Primary School from the start of the 2012/13 academic session, which commences on Tuesday 14 August 2012, or as soon as possible thereafter. This will allow the Council to conduct the necessary consultation in accordance with the relevant statutory frameworks.
- 12.2 It is acknowledged that should the proposal be approved and implemented, forward planning will be required from Education and Children's Services and school senior staff, as a matter of good management practice. This planning is necessary in respect of curriculum delivery, staff management and associated issues.

## **13. FINANCIAL IMPLICATIONS**

- 13.1 The annual recurring savings of the preferred option is made up of staff costs and building running costs. The financial implications of this proposal are as follows:

OPTION	SAVINGS
Cease education provision at Struan Primary School and integrate within Blair Atholl Primary School	£105,182

- 13.2 Financial savings generated from closing Struan Primary School amount to £105,182 on an annual basis. This saving is predominantly made up of staff costs and building running costs.
- 13.3 On 30 June 2010, the Council approved the report Securing the Future – Towards 2015 and Beyond (Report 10/357 refers). This report set out our continuing strategy for securing the future, aiming to support the delivery of savings through revised service delivery models and ongoing improvement activities in the Council. Education and Children's Services Service Review Programme within this report contains a re-design project to "review the school estate".
- 13.4 On 25 August 2010, the Lifelong Learning Committee approved the report Review of School Estate – Struan Primary School (Report 10/427 refers). This report sought approval to proceed with undertaking an Options Appraisal and, if appropriate, produce a Proposal Paper containing an Educational Benefits Statement in respect of Struan Primary School.



- 13.5 Therefore, any savings arising from the proposed option to close Struan Primary School will be allocated against Education and Children's Services budget savings targets which have currently been set for the period 2011-2014.
- 13.6 This will mitigate against making alternative budget reductions within other areas of Education and children's Services, with a corresponding reduction in service delivery in that area.
- 13.7 The annual budget is built reflecting cost drivers such as the number of schools, buildings, staff and pupils. If Struan Primary School were to be closed then future years' budgets would not contain any allowance for staffing Struan Primary School and there would be reduced property costs (and possibly no costs should the building be sold in the future). Any per capita budgets relating to individual pupils would continue to be budgeted against the school that these pupils would attend following the closure of Struan Primary School.
- 13.8 It is envisaged that the existing Struan Primary School will be declared surplus to requirements and disposed of in accordance with Perth and Kinross Council's Disposal Policy. This will minimise security costs and also minimise the risks associated with vacant buildings.

#### **14. RESPONDING TO THE PROPOSAL**

- 14.1 Interested parties are invited to respond to the proposal by making written or electronic submissions on the proposal to Struan Primary School Consultation, Education and Children's Services, Pullar House, 35 Kinnoull Street, Perth, PH1 5GD, and e-mail: [ECStatutoryconsultations@pkc.gov.uk](mailto:ECStatutoryconsultations@pkc.gov.uk)
- 14.2 A form is provided at Appendix 7 for the convenience of those wishing to respond. Its use is not compulsory. However, those wishing to respond are invited to state their relationship with the school – for example, "pupil", "parent", "grandparent", "former pupil", "teacher in school", "member of the Community" etc. Responses from the Parent Councils, staff, and Pupil Council are particularly welcome.
- 14.3 Those sending in a response, whether by letter or electronically should know that their response will be open to public scrutiny and may have to be supplied to anyone making a reasonable request to see it.
- 14.4 If they do not wish their response to be publicly available, they should clearly write on the document: "I wish my response to be considered as confidential with access restricted to elected members and council officers of Perth and Kinross Council." Otherwise, it will be assumed that the person making the response agrees to it being made publicly available.

## 15. RECOMMENDATIONS

15.1 The Lifelong Learning Committee of Perth and Kinross Council agrees to adopt, for the purpose of consultation, the proposal that:

- (i) Education provision at Struan Primary School be discontinued with effect from Wednesday 27 June 2012, or as soon as possible thereafter;
- (ii) Further that the pupils of Struan Primary School receive their primary school education at Blair Atholl Primary School, from Tuesday 14 August 2012 or as soon as possible thereafter; and
- (iii) The delineated area of Blair Atholl Primary School be extended to subsume the whole delineated area of Struan Primary School from Tuesday 14 August 2012.

15.2 It is also recommended that:

- i) interested parties be invited to make written submissions on the proposal to:

Struan Primary School Consultation, Education and Children's Services, Pullar House, 35 Kinnoull Street, Perth, PH1 5GD

or by e-mail to: [ECStatutoryconsultations@pkc.gov.uk](mailto:ECStatutoryconsultations@pkc.gov.uk)

no later than close of business on 28 October 2011.

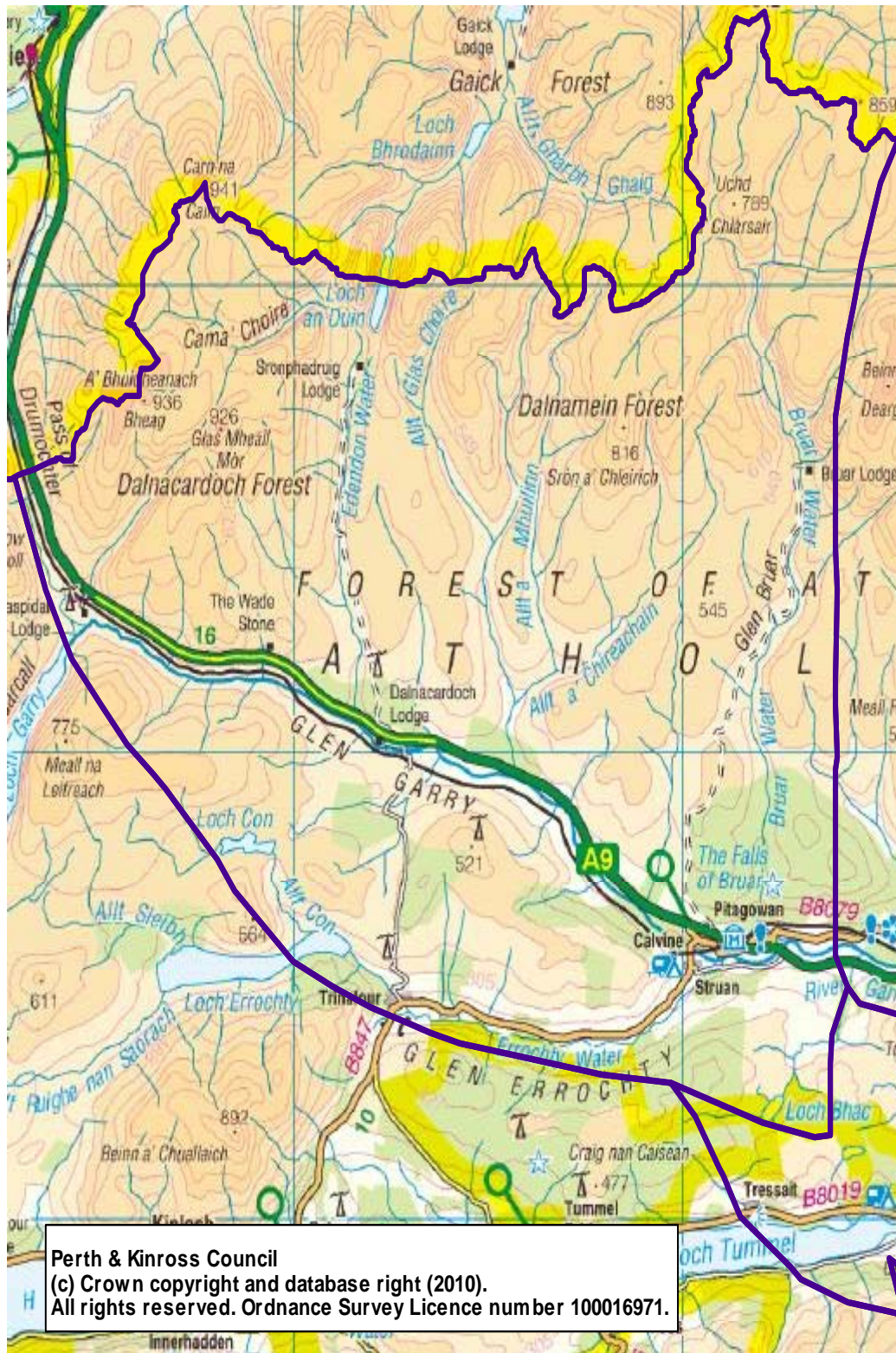
- ii) the Executive Director (Education and Children's Services) prepares a report on the results of the proposal process for consideration at a future meeting of the Lifelong Learning Committee.

13 May 2011

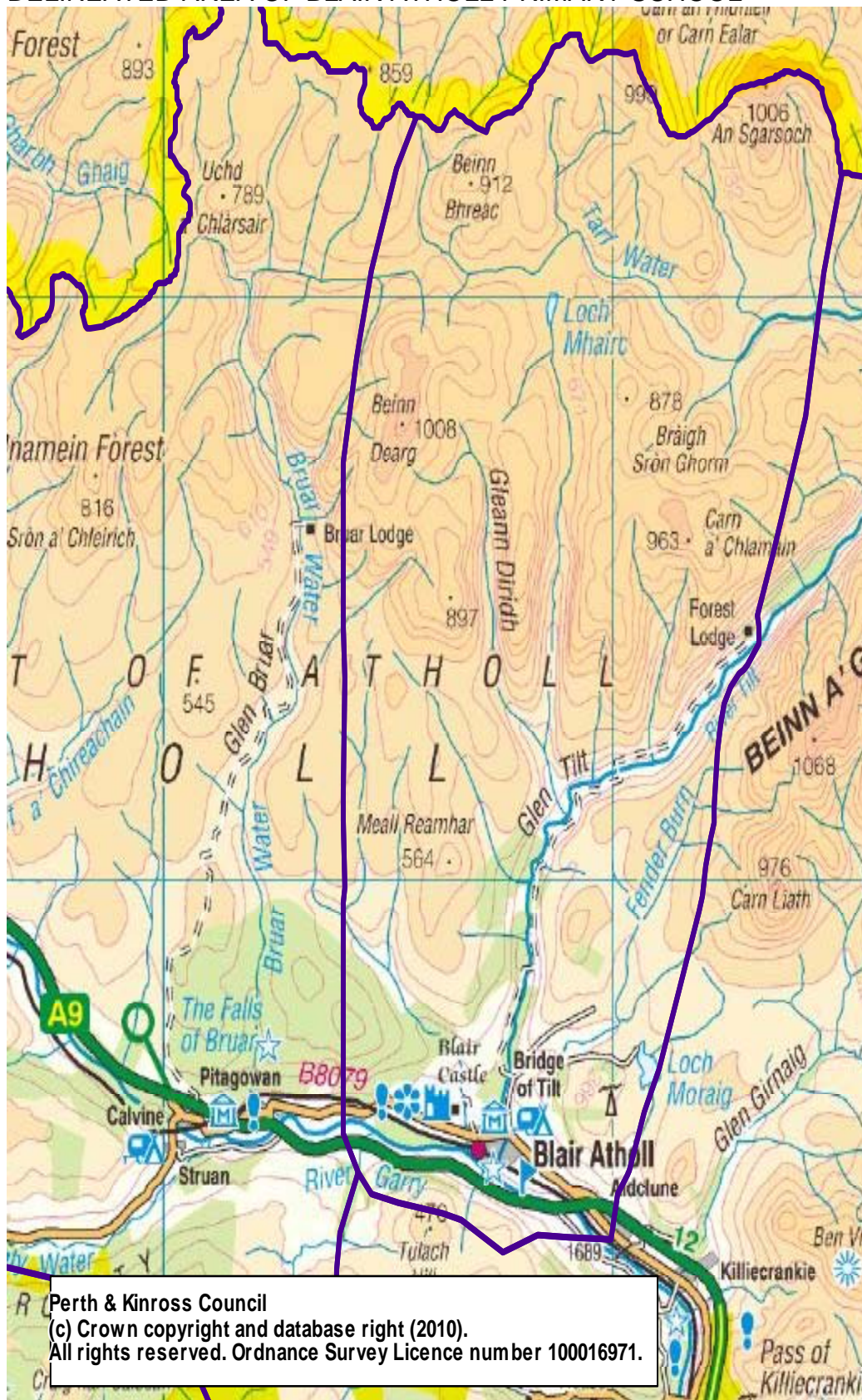
John Fyffe

Executive Director (Education and Children's Services)

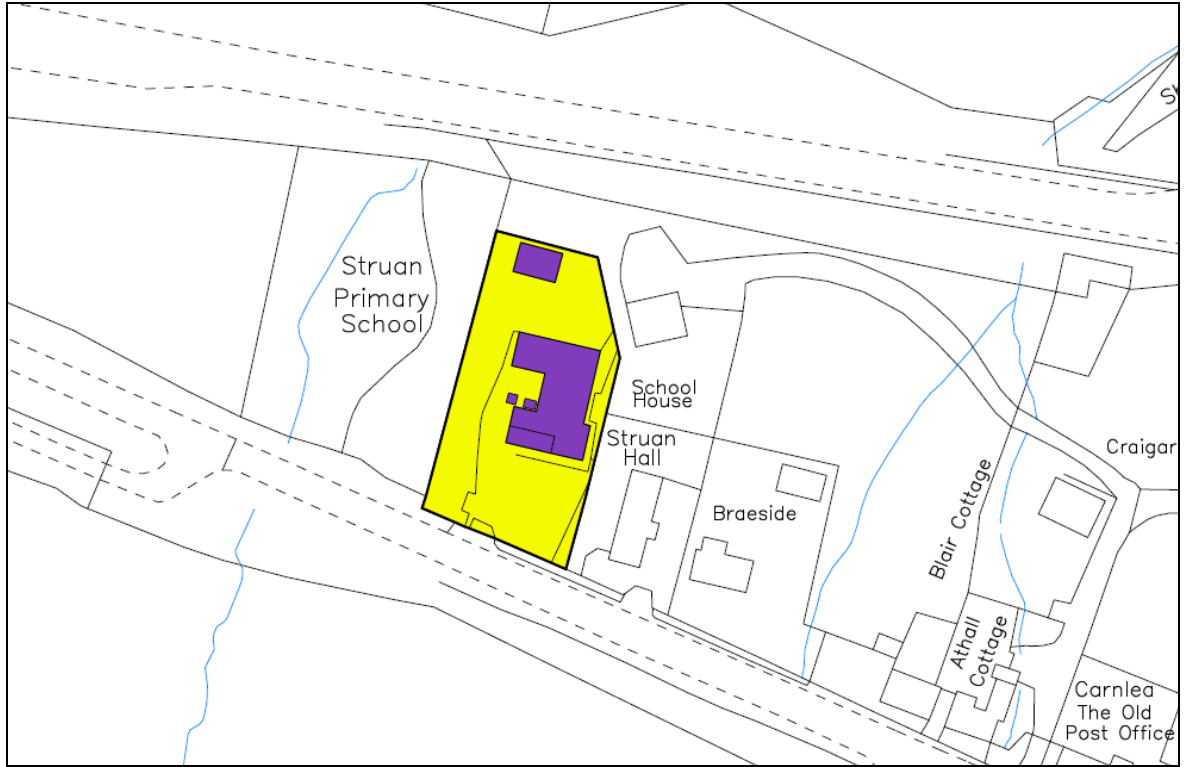
DELINEATED AREA OF STRUAN PRIMARY SCHOOL



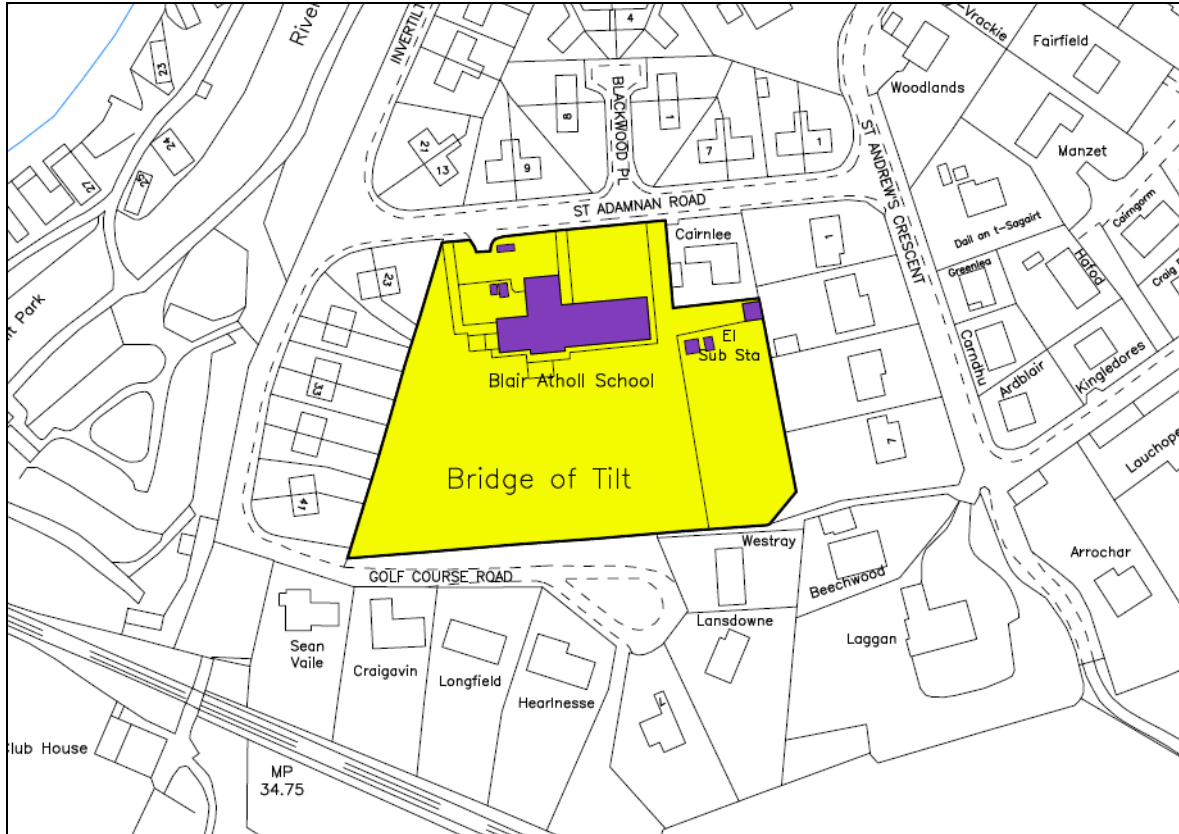
DELINEATED AREA OF BLAIR ATHOLL PRIMARY SCHOOL



OUTLINE OF STRUAN PRIMARY SCHOOL BUILDING AND THE SCHOOL GROUNDS



OUTLINE OF BLAIR ATHOLL PRIMARY SCHOOL BUILDING AND THE SCHOOL GROUNDS



## HISTORICAL AND PROJECTED PUPIL ROLL DATA FOR STRUAN PRIMARY SCHOOL

<b>1999</b>	<b>2000</b>	<b>2001</b>	<b>2002</b>	<b>2003</b>	<b>2004</b>	<b>2005</b>	<b>2006</b>	<b>2007</b>	<b>2008</b>	<b>2009</b>
9	6	7	15	17	16	16	14	6	3	4

Source: [Scottish Government – School Education - Datasets](#)

2010	2011	2012	2013	2014	2015	2016	2017	
3	0	0	0	0	0	0	0	(if mothballed)
3	2	1	0	0	0	0	0	(if open)

## ANALYSIS OF SCHOOL/PUPIL INFORMATION

School	Capacity	Roll (census 2010)	Highest Projected Roll - 2016/2017	Condition Rating	Suitability Rating
Struan	47	3	2	B	B

## HISTORICAL AND PROJECTED PUPIL ROLL DATA FOR BLAIR ATHOLL PRIMARY SCHOOL

<b>1999</b>	<b>2000</b>	<b>2001</b>	<b>2002</b>	<b>2003</b>	<b>2004</b>	<b>2005</b>	<b>2006</b>	<b>2007</b>	<b>2008</b>	<b>2009</b>
56	60	59	51	42	34	27	26	27	22	26

Source: [Scottish Government – School Education - Datasets](#)

<b>2010</b>	<b>2011</b>	<b>2012</b>	<b>2013</b>	<b>2014</b>	<b>2015</b>	<b>2016</b>
25	26	29	26	23	22	23

## ANALYSIS OF SCHOOL/PUPIL INFORMATION

<b>School</b>	<b>Capacity</b>	<b>Roll (census 2010)</b>	<b>Highest Projected Roll - 2016/2017</b>	<b>Condition Rating</b>	<b>Suitability Rating</b>
Blair Atholl	50	25	29	B	B



## CONSULTEE RESPONSE FORM



## Education and Children's Services

## Response Form

I wish my response to be considered as confidential with access restricted to Elected members and Council Officers of Perth and Kinross Council

## Proposal :

That subject to the outcome of this Proposal exercise :

- Education provision at Struan Primary School be discontinued with effect from Wednesday 27 June 2012, or as soon as possible thereafter;
- That pupils from Struan have their education provided at Blair Atholl Primary School, from Tuesday 14 August 2012 or as soon as possible thereafter; and
- That the delineated area of Blair Atholl Primary School be extended to subsume the whole delineated area of Struan Primary School from Tuesday 14 August 2012.

**This part of the form must be completed for a valid response:**

Name: \_\_\_\_\_ Address: \_\_\_\_\_  
 \_\_\_\_\_  
 \_\_\_\_\_  
 Postcode: \_\_\_\_\_

**Your Interest: (please tick)**

Parent  Child / Young Person  Staff  Other \*

Other: (please specify) \_\_\_\_\_

Elected Member / MSP / MP  Member of Community Council

Please state your views on the proposal (continue overleaf if necessary)

Office Use: \_\_\_\_\_

