

Setting the Standards for Learning Achieving Excellence Together



PERTH & KINROSS COUNCIL

Education & Children's Services

Meeting Learners' Needs

Learners' needs will best be met by:

- matching learning tasks, activities and resources to the needs of individual learners and groups
- providing appropriate support and challenge to all learners
- developing programmes of work to meet all learners' needs
- ensuring that the quality and delivery of programmes include all learners in the learning process
- using assessment information to identify gaps in learners' skills, knowledge and understanding and plan learning
- removing barriers to learning through the regular identification, review and evaluation of learners' needs including those who have additional support needs
- effective partnership working between teachers, learners, parents and services
- the provision of effective support and advice by learning support staff to teachers and individual learners about strategies to meet learners' needs
- understanding and implementing current legislation including that relating to additional support needs
- setting appropriate learning targets in individualised educational programmes and co-ordinated support plans
- reviewing, in partnership with parents and learners, learners' needs and learning plans

Curriculum

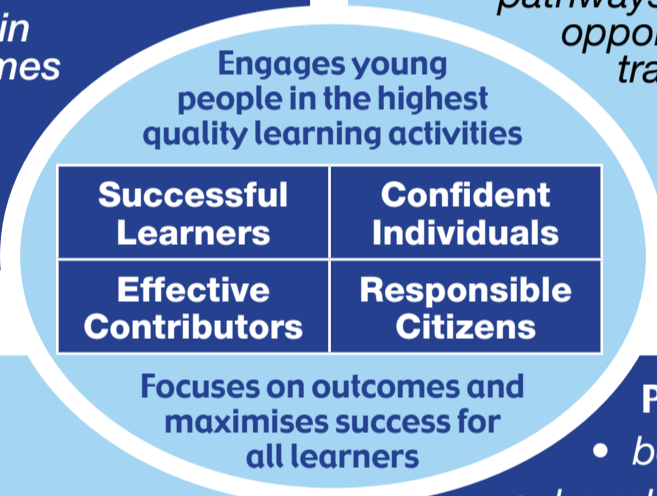
The Curriculum will:

- have a clear rationale
- be designed to ensure educational gain for all pupils
- offer breadth, depth and sufficient flexibility to meet the needs of individual pupils
- take full account of local circumstances, and local and national advice
- be well planned within and across schools
- be developed, designed and regularly reviewed in full consultation with staff, parents and learners
- be adapted to meet the needs of all learners
- set clear outcomes for all that are monitored and evaluated
- enable all learners to become successful, confident and responsible, and make effective contributions to society
- provide stimulating, challenging and enjoyable experiences for all learners
- involve innovative multi and inter-disciplinary work
- ensure continuity, progression and coherence in pupils' learning, particularly at stages of transition
- provide well-planned and coherent curriculum pathways across the stages, including opportunities for vocational study and training

Teaching

Teaching approaches will:

- be appropriately varied and of a consistently high standard
- be well matched to learners' needs
- take full account of learners' prior learning and attainment
- ensure lessons are well structured and planned with clear outcomes
- ensure that the purpose of lessons is shared with learners
- use praise effectively
- ensure explanations, expositions and instructions are clear
- engage learners through discussion, dialogue and interaction
- encourage learners to express their views and ask questions
- include skilled use of questioning to stimulate learners' interest and check and develop pupils' understanding
- motivate learners and develop their independent learning skills
- encourage and value learners' contributions, promote learning and build confidence
- involve learners in evaluating teaching approaches
- make regular and effective use of ICT to support and extend learning



Learning

Pupils' learning will:

- be of a consistently high standard
- be relevant, stimulating, challenging, exciting and motivating
- take account of learners' previous experiences
- provide continuity and progression in learning
- provide opportunities for learners to take responsibility, become more independent and think more independently
- engage learners in thinking about, and being active in, their learning
- enable learners to develop their critical thinking skills and creativity
- enable learners to use their imaginations and develop a strong sense of self-worth and confidence
- provide learners with a clear understanding of what they need to do to improve
- be well paced and provide appropriate support and challenge to all
- enable all learners to make progress in their coursework
- actively involve learners in their own learning and development
- provide opportunities for learners to work independently and with others in groups to make decisions, explain their ideas, solve problems and provide solutions
- make regular and appropriate use of ICT to support and extend learning