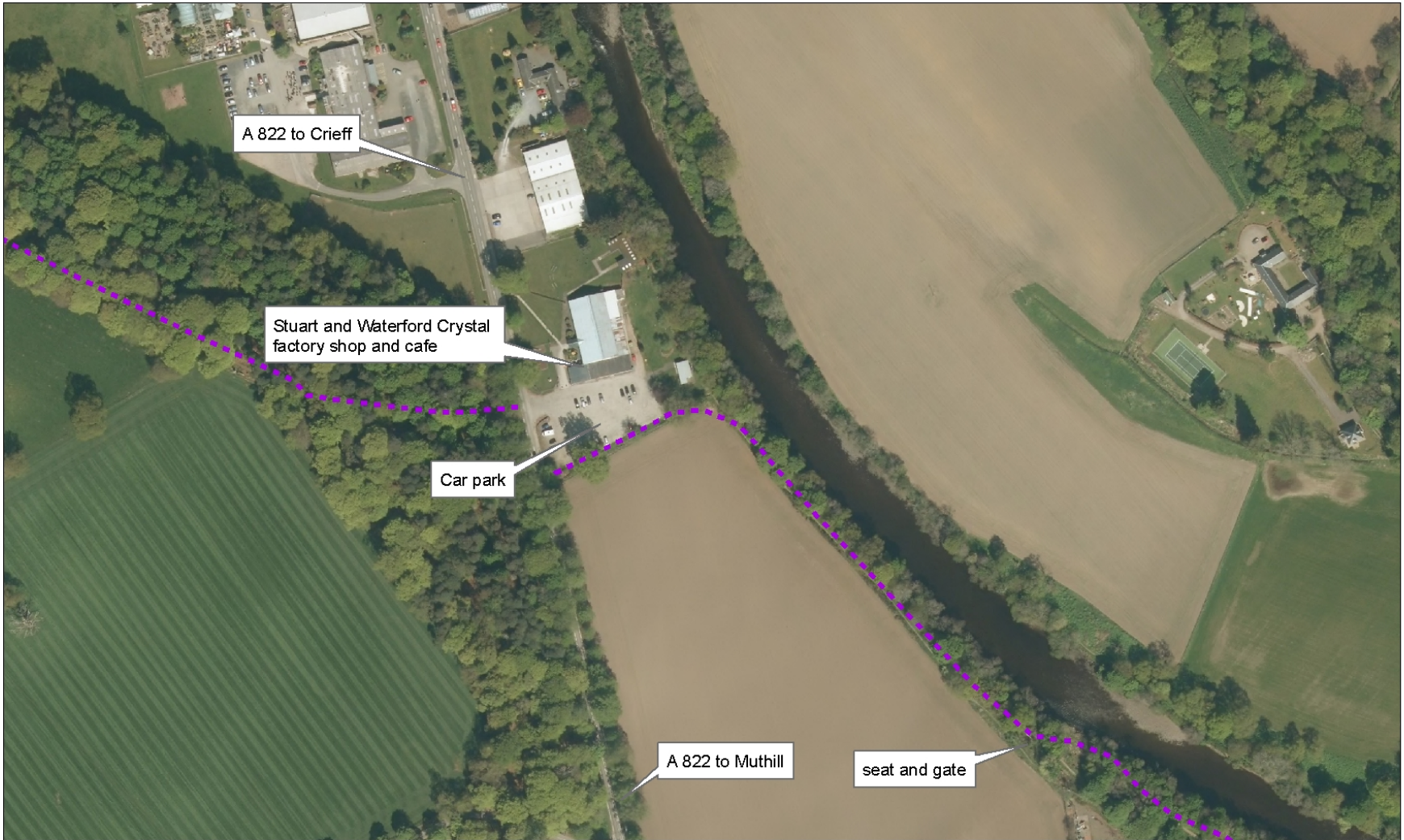


Riverside Path, south of Crieff - off the A822. Car Park and café at Stuart and Waterford Crystal . The café/showroom has toilets for its customers. Nearest public accessible toilets are in James Square in the centre of Crieff. The path is level, 250m long, and leads to a seat beside the river.





Reproduced by permission of Ordnance Survey on behalf of HMSO. © Crown copyright and database right (2013). All rights reserved. Ordnance Survey Licence number 100016971.

Legend

— PKC Adopted Core Paths

Crieff - short riverside path



Scale:
1:2,500



The level path gives glimpses of the river between the trees and leads to a seat and a gate. On the gate is information about historic use of freshwater pearl mussels. After the gate, a rough but waymarked route forms part of the River Earn Path, which heads to Muthill 7 km away.

