

Reproduced by permission of Ordnance Survey on behalf of Her Majesty's Stationery Office. (c) Crown copyright and database right 2013. All rights reserved. 100016971.

- ### NOTES
1. THESE PLANS ARE IN ACCORDANCE WITH THE REQUIREMENTS OF SECTION 60 AND SCHEDULE 2 OF THE FLOOD RISK MANAGEMENT (SCOTLAND) ACT 2009.
  2. THESE PLANS ARE TO BE READ IN CONJUNCTION WITH THE ALMONDBANK FLOOD PROTECTION SCHEME 2013.
  3. OPERATIONS ALONG THE LENGTH OF THE RIVER ALMOND AND THE EAST POW BURN WILL BE FINISHED WITH A SCHEME OF PLANTING AND LANDSCAPING.
  4. ALL OUTFALLS WHICH DISCHARGE TO THE RIVER ALMOND AND THE EAST POW BURN IDENTIFIED WITHIN THE OPERATIONS, WILL INCORPORATE APPROPRIATE BACK FLOW PREVENTION MEASURES.
  5. INFORMATION RECEIVED FROM STATUTORY UNDERTAKERS HAS BEEN USED TO IDENTIFY LOCATIONS OF SERVICES, EXACT LOCATIONS OF THESE SERVICES WILL BE DETERMINED DURING DETAILED DESIGN.

- ### LEGEND
- REINFORCED CONCRETE FLOOD WALL CAST WITH A SUITABLE AESTHETIC FINISH
  - RETAINING WALL
  - SHEET PILE WALL
  - SHEET PILE WALL WITH CLADDING
  - KERB DRAINAGE SYSTEM
  - PROPOSED SECURITY FENCING
  - LIMITS OF LAND AFFECTED BY THE OPERATIONS AND OF LAND UPON WHICH ENTRY IS REQUIRED FOR THE PURPOSE OF CARRYING OUT THE OPERATIONS AND EXECUTING TEMPORARY WORKS.
  - PROPOSED EROSION PROTECTION (EXACT EXTENTS TO BE DETERMINED AT DETAIL DESIGN)
  - EXISTING EROSION PROTECTION
  - RAISED ROAD/ACCESS TRACK
  - SURFACE WATER DRAINAGE CHANNEL
  - CONCRETE
  - GRAVEL
  - ACCESS STEPS
  - GATE ACCESS
  - OUTFALL
  - SURFACE WATER DRAINAGE SYSTEM
  - SECONDARY SPILL OFF SYSTEM
  - EMBANKMENT (WITH IMPERMEABLE CORE WHERE REQUIRED)
  - EXISTING OUTFALL TO BE FITTED WITH NON-RETURN VALVES
  - SLUICE


- ### SERVICES
- TELECOMS
  - OVERHEAD ELECTRICITY
  - UNDERGROUND ELECTRICITY
  - GAS
  - FOUL WATER
  - SURFACE WATER
  - WATER MAIN
  - COMBINED SEWER

THIS IS THE PLAN MARKED **716516/AFO/199** REFERRED TO IN THE FLOOD PROTECTION SCHEME FOR ALMONDBANK FLOOD PROTECTION SCHEME 2013

PROPER OFFICER  
(Signature)  
FOR PERTH AND KINROSS COUNCIL  
(date)

	W DUMBERS	F JAMBERT	N COOKE
E CLIENT AMENDMENTS	28.06.13	28.06.13	28.06.13
D CLIENT AMENDMENTS	S.MCLODDH	F.JAMBERT	N.COOKIE
C CLIENT AMENDMENTS	S.MCLODDH	F.JAMBERT	N.COOKIE
B FOR INFORMATION	W.DUMBERS	F.JAMBERT	N.COOKIE
A FOR INFORMATION	S.MCLODDH	W.DUMBERS	N.COOKIE

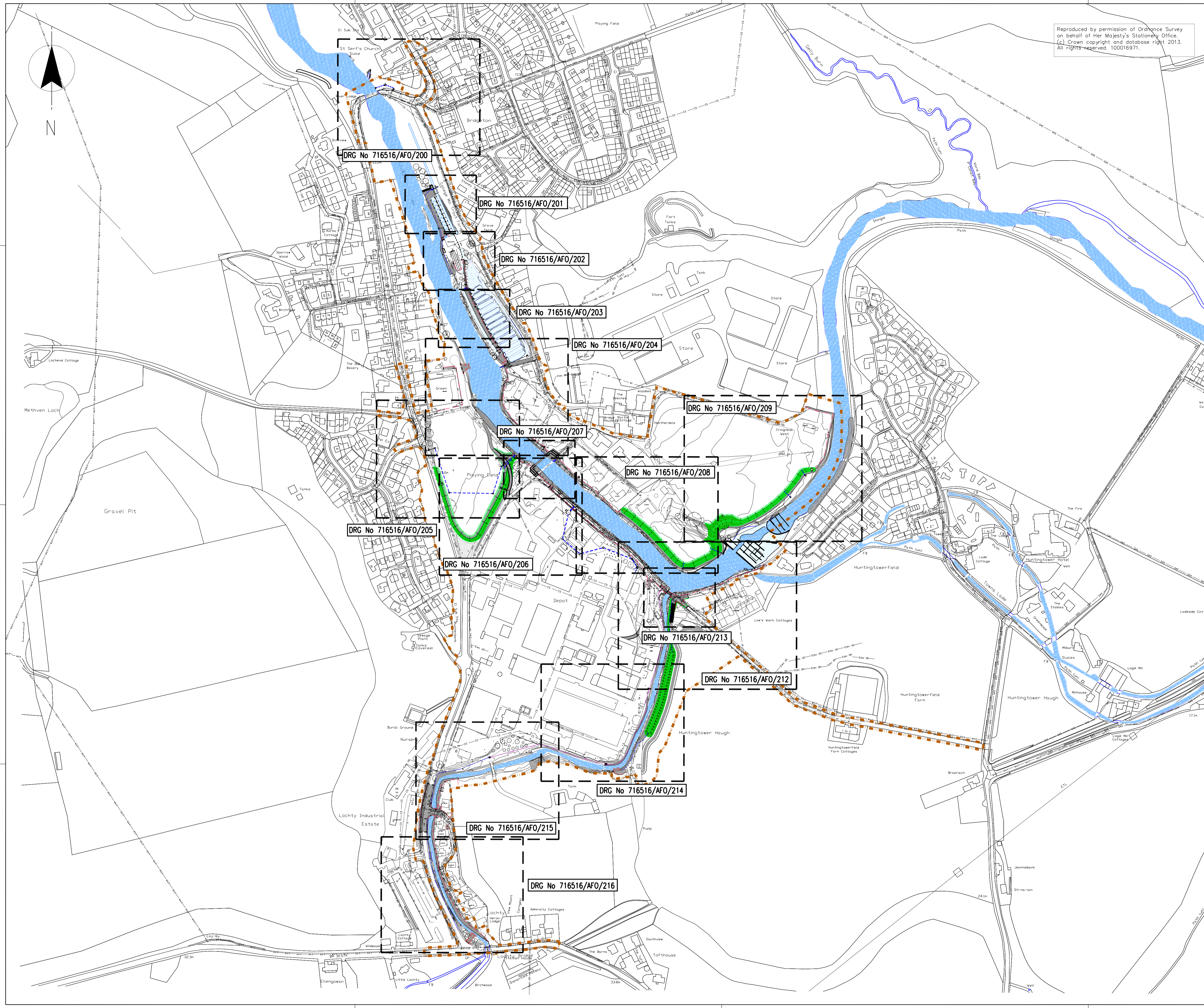
Project: ALMONDBANK FLOOD PROTECTION SCHEME  
Drawing Title: FLOOD PROTECTION OPERATIONS OVERALL LAYOUT

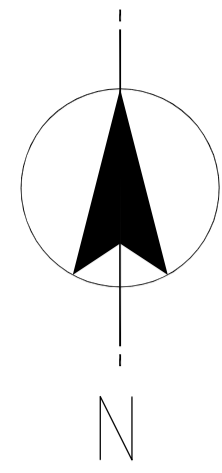


**mouchel** building great relationships

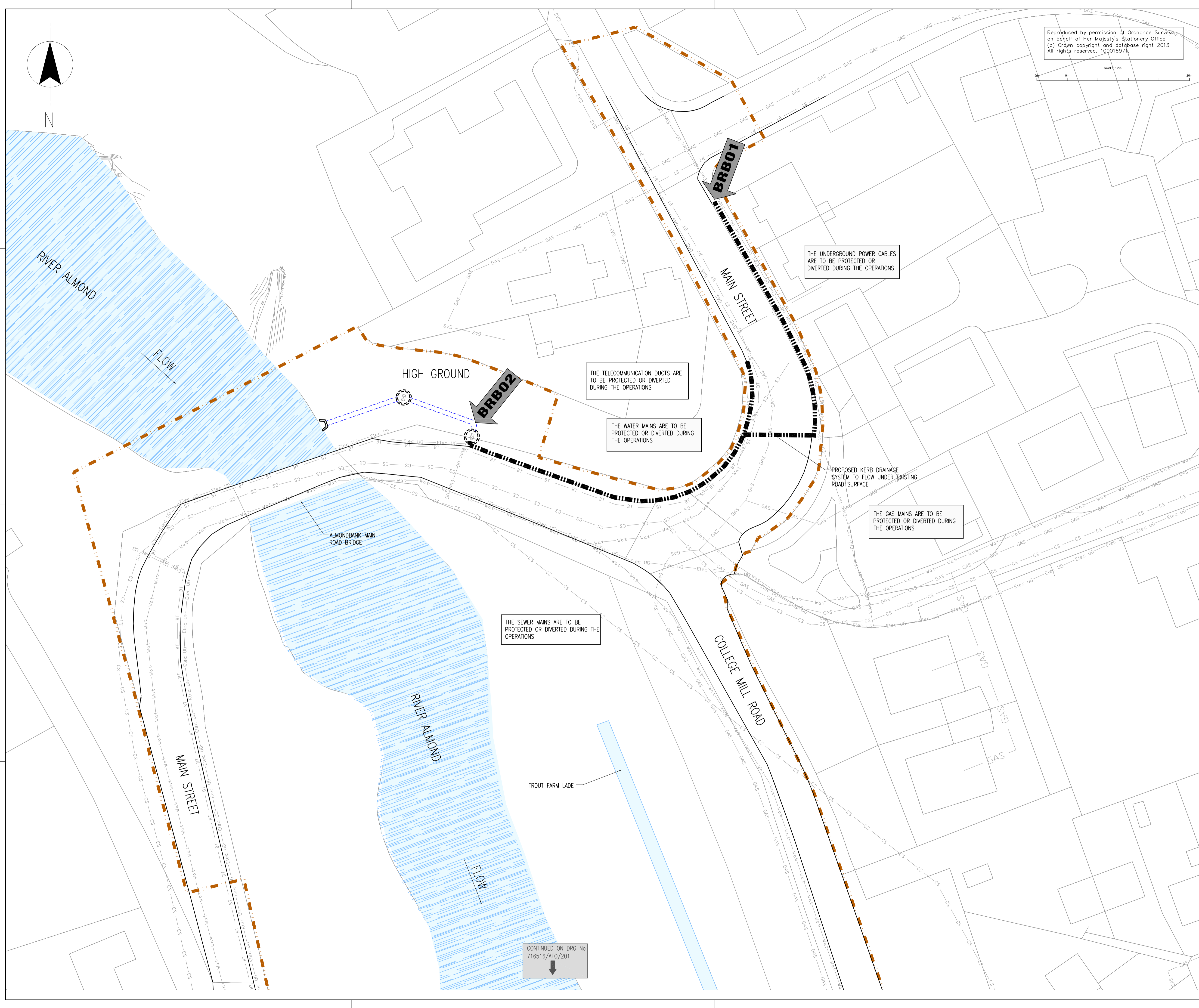
Scale: NOT TO SCALE  
Purpose of Issue: FLOOD PROTECTION OPERATIONS

Office: LIVERPOOL	Tel No: 0151 237-4200	Drawing No: 716516/AFO/199	Version: E
-------------------	-----------------------	----------------------------	------------





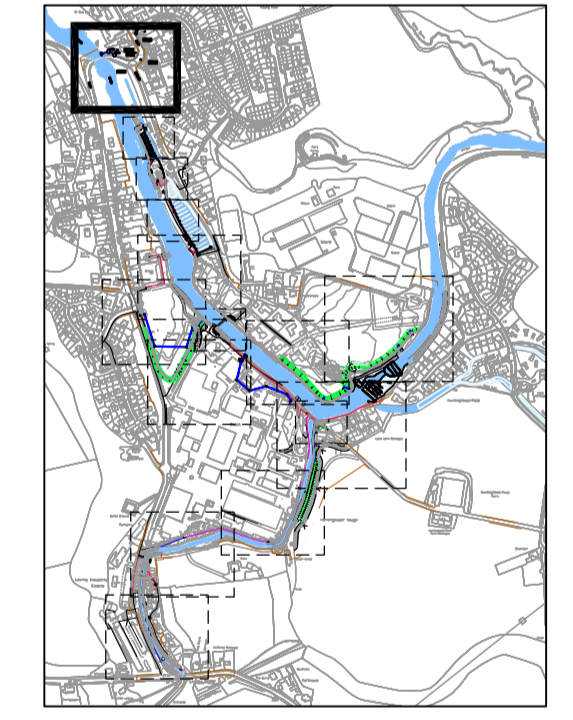
Reproduced by permission of Ordnance Survey on behalf of Her Majesty's Stationary Office. (c) Crown copyright and database right 2013. All rights reserved. 100016971.



- ### NOTES
1. THESE PLANS ARE IN ACCORDANCE WITH THE REQUIREMENTS OF SECTION 60 AND SCHEDULE 2 OF THE FLOOD RISK MANAGEMENT (SCOTLAND) ACT 2009.
  2. THESE PLANS ARE TO BE READ IN CONJUNCTION WITH THE ALMONDBANK FLOOD PROTECTION SCHEME 2013.
  3. OPERATIONS ALONG THE LENGTH OF THE RIVER ALMOND AND THE EAST POW BURN WILL BE FINISHED WITH A SCHEME OF PLANTING AND LANDSCAPING.
  4. ALL OUTFALLS WHICH DISCHARGE TO THE RIVER ALMOND AND THE EAST POW BURN IDENTIFIED WITHIN THE OPERATIONS, WILL INCORPORATE APPROPRIATE BACK FLOW PREVENTION MEASURES.
  5. INFORMATION RECEIVED FROM STATUTORY UNDERTAKERS HAS BEEN USED TO IDENTIFY LOCATIONS OF SERVICES, EXACT LOCATIONS OF THESE SERVICES WILL BE DETERMINED DURING DETAILED DESIGN.

- ### LEGEND
- REINFORCED CONCRETE FLOOD WALL CAST WITH A SUITABLE AESTHETIC FINISH
  - RETAINING WALL
  - SHEET PILE WALL
  - SHEET PILE WALL WITH CLADDING
  - KERB DRAINAGE SYSTEM
  - PROPOSED SECURITY FENCING
  - LIMITS OF LAND AFFECTED BY THE OPERATIONS AND OF LAND UPON WHICH ENTRY IS REQUIRED FOR THE PURPOSE OF CARRYING OUT THE OPERATIONS AND EXECUTING TEMPORARY WORKS.
  - PROPOSED EROSION PROTECTION (EXACT EXTENTS TO BE DETERMINED AT DETAIL DESIGN)
  - EXISTING EROSION PROTECTION
  - RAISED ROAD/ACCESS TRACK
  - SURFACE WATER DRAINAGE CHANNEL
  - CONCRETE
  - GRAVEL
  - OUTFALL
  - SURFACE WATER DRAINAGE SYSTEM
  - SECONDARY SPILL OFF SYSTEM
  - EMBANKMENT (WITH IMPERMEABLE CORE WHERE REQUIRED)
  - EXISTING OUTFALL TO BE FITTED WITH NON-RETURN VALVES
  - ACCESS STEPS
  - SLUICE
  - SECTION MARKERS
  - START LOCATION OF REFERENCED OPERATION
  - GATE ACCESS

- ### SERVICES
- BT TELECOMS
  - OVERHEAD ELECTRICITY
  - UNDERGROUND ELECTRICITY
  - GAS
  - FOUL WATER
  - SURFACE WATER
  - WATER MAIN
  - COMBINED SEWER



THIS IS THE PLAN MARKED **716516/AFO/200** REFERRED TO IN THE FLOOD PROTECTION SCHEME FOR ALMONDBANK FLOOD PROTECTION SCHEME 2013

PROPER OFFICER

(Signature) \_\_\_\_\_

FOR PERTH AND KINROSS COUNCIL

(date) \_\_\_\_\_

Version	Amendment	Drawn	Checked	Approved	Date
E	CLIENT AMENDMENTS	W.DUMMERS	P.JAMBERT	N.DOOKE	28.08.13
D	CLIENT AMENDMENTS	S.MICCOLLOCH	P.JAMBERT	N.DOOKE	30.05.13
C	CLIENT AMENDMENTS	S.MICCOLLOCH	P.JAMBERT	N.DOOKE	07.05.13
B	FOR INFORMATION	W.DUMMERS	P.JAMBERT	N.DOOKE	15.02.13
A	FOR INFORMATION	S.MICCOLLOCH	W.DUMMERS	N.DOOKE	30.04.12

Project: ALMONDBANK FLOOD PROTECTION SCHEME

Client: PERTH & KINROSS COUNCIL

Drawing Title: FLOOD PROTECTION OPERATIONS SHEET 1 OF 15 COMBINED KERB & DRAINAGE SYSTEM

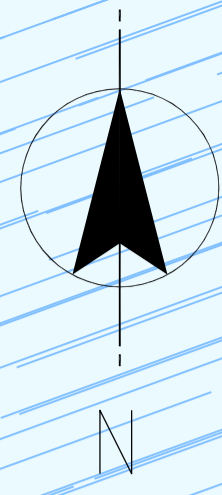
**mouchel** building great relationships

Scale (if A3 size): 1:200

Purpose of Issue: FLOOD PROTECTION OPERATIONS

Office: LIVERPOOL | Tel No: 0151 237-4200 | Drawing No: 716516/AFO/200 | Version: E

CONTINUED ON DRG No 716516/AFO/201



CONTINUED ON DRG No 716516/AF0/200

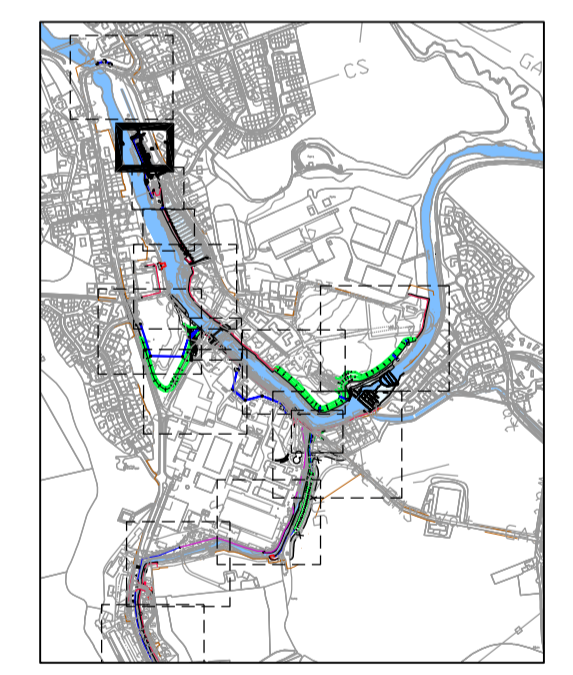
Reproduced by permission of Ordnance Survey on behalf of Her Majesty's Stationary Office. (c) Crown copyright and database right 2013. All rights reserved. 100016971.

SCALE 1:100

- NOTES**
1. THESE PLANS ARE IN ACCORDANCE WITH THE REQUIREMENTS OF SECTION 60 AND SCHEDULE 2 OF THE FLOOD RISK MANAGEMENT (SCOTLAND) ACT 2009.
  2. THESE PLANS ARE TO BE READ IN CONJUNCTION WITH THE ALMONDBANK FLOOD PROTECTION SCHEME 2013.
  3. OPERATIONS ALONG THE LENGTH OF THE RIVER ALMOND AND THE EAST POW BURN WILL BE FINISHED WITH A SCHEME OF PLANTING AND LANDSCAPING.
  4. ALL OUTFALLS WHICH DISCHARGE TO THE RIVER ALMOND AND THE EAST POW BURN IDENTIFIED WITHIN THE OPERATIONS, WILL INCORPORATE APPROPRIATE BACK FLOW PREVENTION MEASURES.
  5. INFORMATION RECEIVED FROM STATUTORY UNDERTAKERS HAS BEEN USED TO IDENTIFY LOCATIONS OF SERVICES, EXACT LOCATIONS OF THESE SERVICES WILL BE DETERMINED DURING DETAILED DESIGN.

- LEGEND**
- REINFORCED CONCRETE FLOOD WALL CAST WITH A SUITABLE AESTHETIC FINISH
  - RETAINING WALL
  - SHEET PILE WALL
  - SHEET PILE WALL WITH CLADDING
  - KERB DRAINAGE SYSTEM
  - PROPOSED SECURITY FENCING
  - LIMITS OF LAND AFFECTED BY THE OPERATIONS AND OF LAND UPON WHICH ENTRY IS REQUIRED FOR THE PURPOSE OF CARRYING OUT THE OPERATIONS AND EXECUTING TEMPORARY WORKS.
  - PROPOSED EROSION PROTECTION (EXACT EXTENTS TO BE DETERMINED AT DETAIL DESIGN)
  - EXISTING EROSION PROTECTION
  - RAISED ROAD/ACCESS TRACK
  - SURFACE WATER DRAINAGE CHANNEL
  - CONCRETE
  - GRAVEL
  - EMBANKMENT (WITH IMPERMEABLE CORE WHERE REQUIRED)
  - OUTFALL
  - SURFACE WATER DRAINAGE SYSTEM
  - SECONDARY SPILL OFF SYSTEM
  - EXISTING OUTFALL TO BE FITTED WITH NON-RETURN VALVES
  - ACCESS STEPS
  - SLUICE
  - SECTION MARKERS
  - START LOCATION OF REFERENCED OPERATION
  - GATE ACCESS

- SERVICES**
- TELECOMS
  - OVERHEAD ELECTRICITY
  - UNDERGROUND ELECTRICITY
  - GAS
  - FOUL WATER
  - SURFACE WATER
  - WATER MAIN
  - COMBINED SEWER



THIS IS THE PLAN MARKED 716516/AF0/201 REFERRED TO IN THE FLOOD PROTECTION SCHEME FOR ALMONDBANK FLOOD PROTECTION SCHEME 2013

PROPER OFFICER

(Signature) \_\_\_\_\_

FOR PERTH AND KINROSS COUNCIL


(date) \_\_\_\_\_

E	CLIENT AMENDMENTS	W.DUMBERS	P.JAMBERT	N.COOTE
D	CLIENT AMENDMENTS	S.MACALLOCH	P.JAMBERT	N.COOTE
C	CLIENT AMENDMENTS	S.MACALLOCH	P.JAMBERT	N.COOTE
B	FOR INFORMATION	W.DUMBERS	P.JAMBERT	N.COOTE
A	FOR INFORMATION	S.MACALLOCH	W.DUMBERS	N.COOTE

Version: \_\_\_\_\_ Amendment: \_\_\_\_\_

Project: ALMONDBANK FLOOD PROTECTION SCHEME

Drawing Title: FLOOD PROTECTION OPERATIONS SHEET 2 OF 15 COLLEGE MILL TROUT FARM

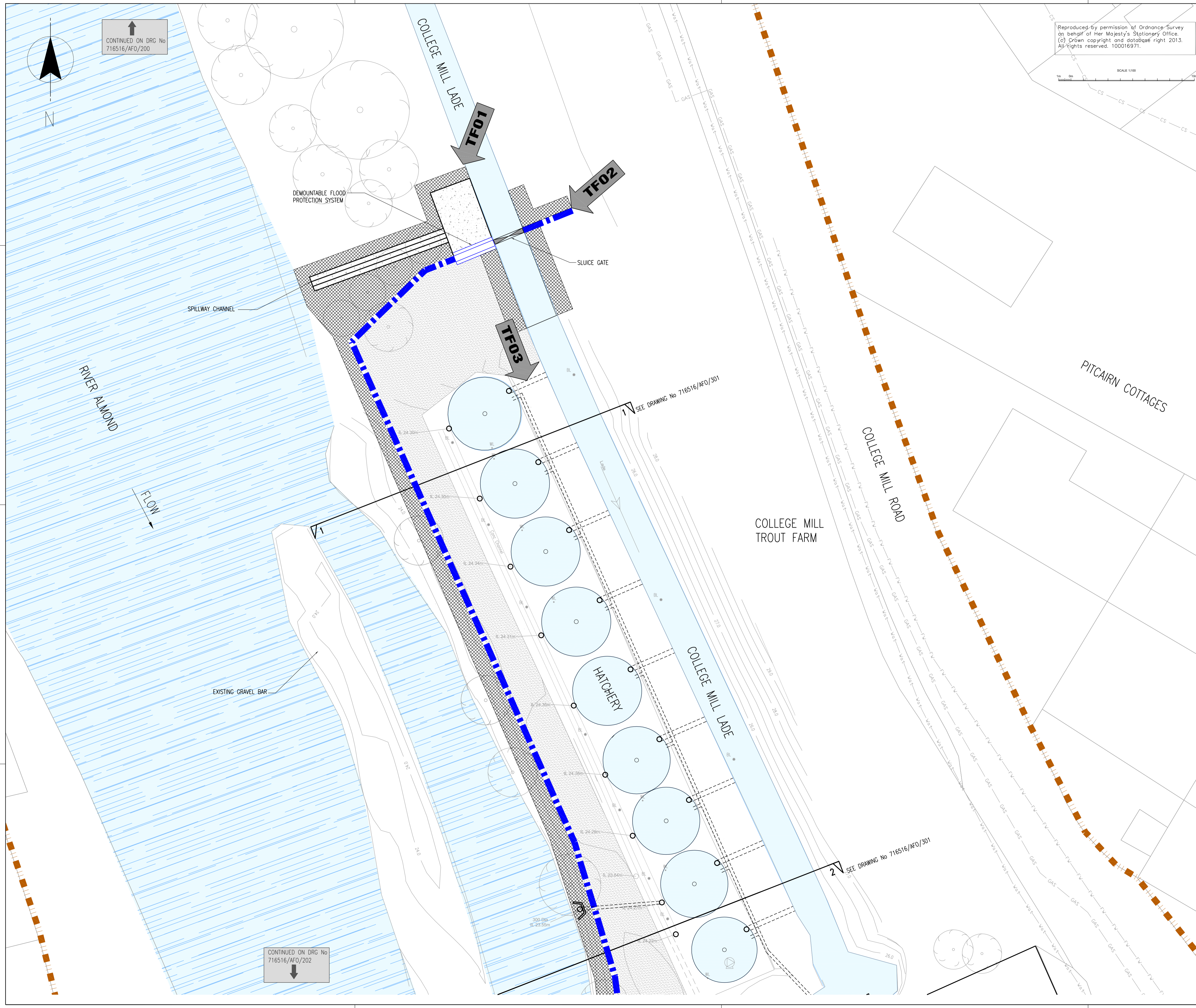


**mouchel**

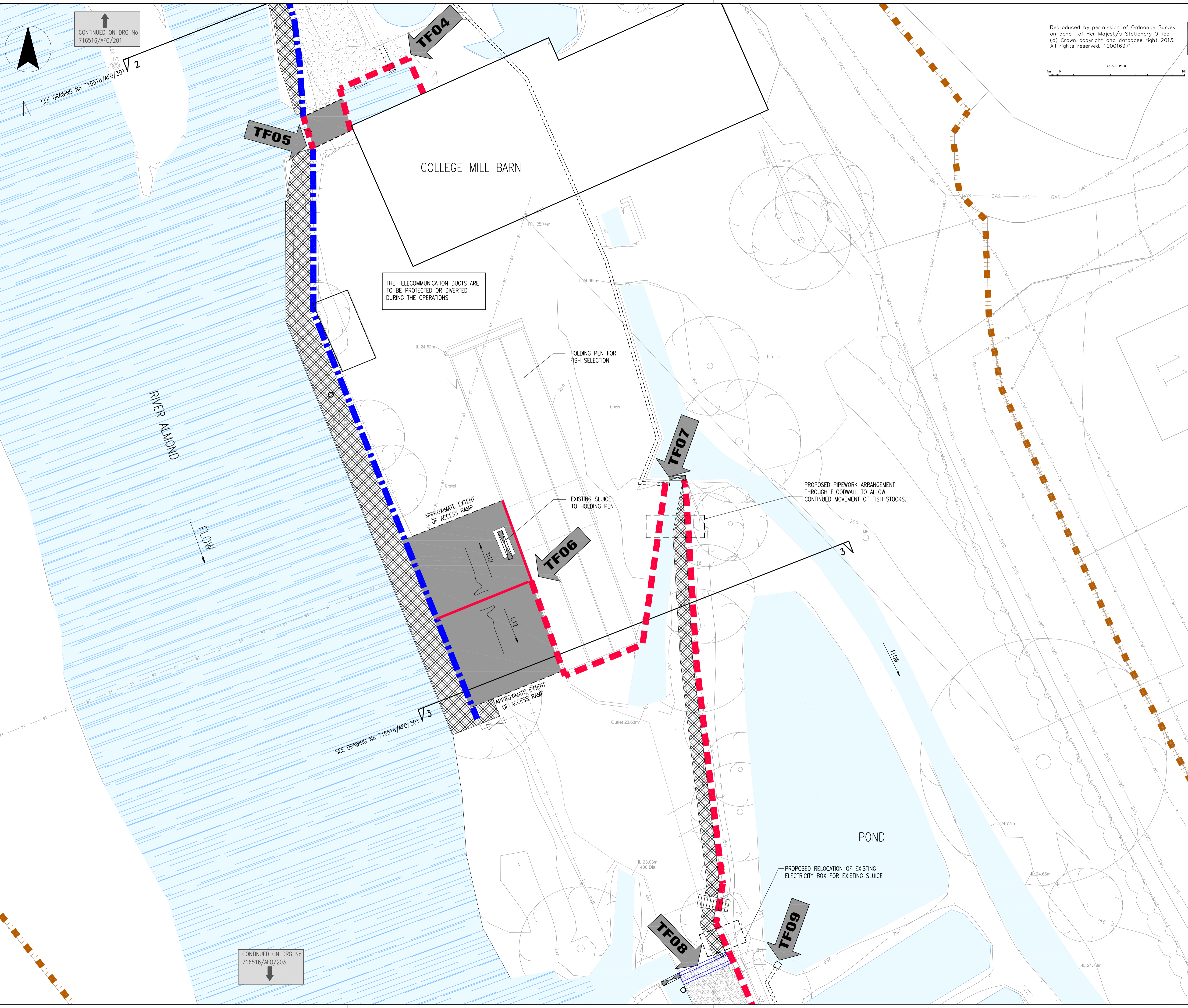
Scale (if all sizes): 1:100

Purpose of Issue: FLOOD PROTECTION OPERATIONS

Office: LIVERPOOL | Tel No: 0151 237-4200 | Drawing No: 716516/AF0/201 | Version: E



CONTINUED ON DRG No 716516/AF0/202



Reproduced by permission of Ordnance Survey on behalf of Her Majesty's Stationary Office. (c) Crown copyright and database right 2013. All rights reserved. 100016971.

SCALE 1:100

CONTINUED ON DRG No 716516/AFD/201

SEE DRAWING No 716516/AFD/301

THE TELECOMMUNICATION DUCTS ARE TO BE PROTECTED OR DIVERTED DURING THE OPERATIONS

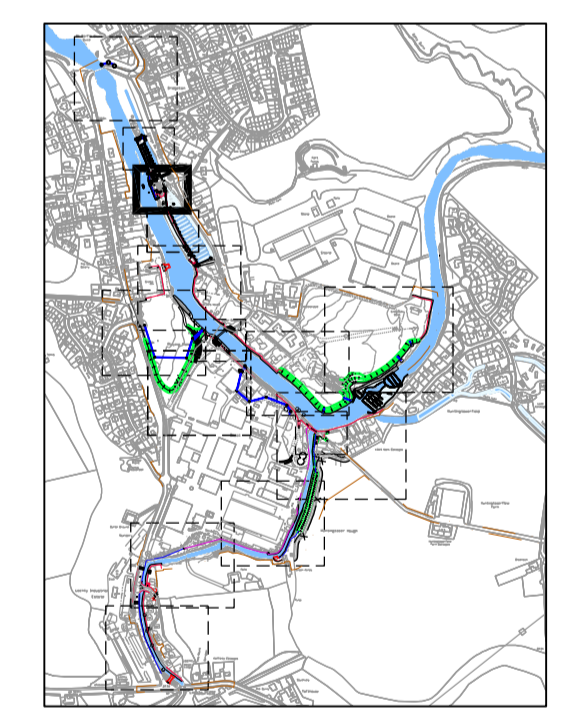
SEE DRAWING No 716516/AFD/301

CONTINUED ON DRG No 716516/AFD/203

- ### NOTES
- THESE PLANS ARE IN ACCORDANCE WITH THE REQUIREMENTS OF SECTION 60 AND SCHEDULE 2 OF THE FLOOD RISK MANAGEMENT (SCOTLAND) ACT 2009.
  - THESE PLANS ARE TO BE READ IN CONJUNCTION WITH THE ALMONDBANK FLOOD PROTECTION SCHEME 2013.
  - OPERATIONS ALONG THE LENGTH OF THE RIVER ALMOND AND THE EAST POW BURN WILL BE FINISHED WITH A SCHEME OF PLANTING AND LANDSCAPING.
  - ALL OUTFALLS WHICH DISCHARGE TO THE RIVER ALMOND AND THE EAST POW BURN IDENTIFIED WITHIN THE OPERATIONS, WILL INCORPORATE APPROPRIATE BACK FLOW PREVENTION MEASURES.
  - INFORMATION RECEIVED FROM STATUTORY UNDERTAKERS HAS BEEN USED TO IDENTIFY LOCATIONS OF SERVICES, EXACT LOCATIONS OF THESE SERVICES WILL BE DETERMINED DURING DETAILED DESIGN.

- ### LEGEND
- REINFORCED CONCRETE FLOOD WALL CAST WITH A SUITABLE AESTHETIC FINISH
  - RETAINING WALL
  - SHEET PILE WALL
  - SHEET PILE WALL WITH CLADDING
  - KERB DRAINAGE SYSTEM
  - PROPOSED SECURITY FENCING
  - LIMITS OF LAND AFFECTED BY THE OPERATIONS AND OF LAND UPON WHICH ENTRY IS REQUIRED FOR THE PURPOSE OF CARRYING OUT THE OPERATIONS AND EXECUTING TEMPORARY WORKS.
  - PROPOSED EROSION PROTECTION (EXACT EXTENTS TO BE DETERMINED AT DETAIL DESIGN)
  - EXISTING EROSION PROTECTION
  - RAISED ROAD/ACCESS TRACK
  - SURFACE WATER DRAINAGE CHANNEL
  - CONCRETE
  - GRAVEL
  - EMBANKMENT (WITH IMPERMEABLE CORE WHERE REQUIRED)
  - OUTFALL
  - SURFACE WATER DRAINAGE SYSTEM
  - SECONDARY SPILL OFF SYSTEM
  - EXISTING OUTFALL TO BE FITTED WITH NON-RETURN VALVES
  - ACCESS STEPS
  - SLUICE
  - GATE ACCESS
  - SECTION MARKERS
  - START LOCATION OF REFERENCED OPERATION

- ### SERVICES
- BT TELECOMS
  - Overhead Electricity
  - Underground Electricity
  - GAS
  - FW FOUL WATER
  - SW SURFACE WATER
  - Water WATER MAIN
  - CS COMBINED SEWER



THIS IS THE PLAN MARKED 716516/AFD/202 REFERRED TO IN THE FLOOD PROTECTION SCHEME FOR ALMONDBANK FLOOD PROTECTION SCHEME 2013

PROPER OFFICER

(Signature)

FOR PERTH AND KINROSS COUNCIL

(date)

Version	Amendment	Drawn Date	Checked Date	Approved Date
E	CLIENT AMENDMENTS	W.DWIMMERS 28.08.13	P.JAMBERT 28.08.13	N.COOTE 28.08.13
D	CLIENT AMENDMENTS	S.MACALLOCH 30.05.13	P.JAMBERT 30.05.13	N.COOTE 30.05.13
C	CLIENT AMENDMENTS	S.MACALLOCH 07.05.13	P.JAMBERT 07.05.13	N.COOTE 07.05.13
B	FOR INFORMATION	W.DWIMMERS 15.02.13	P.JAMBERT 15.02.13	N.COOTE 15.02.13
A	FOR INFORMATION	S.MACALLOCH 30.04.12	W.DWIMMERS 08.05.12	N.COOTE 08.05.12

Project: ALMONDBANK FLOOD PROTECTION SCHEME

Client: PERTH & KINROSS COUNCIL

Drawing Title: FLOOD PROTECTION OPERATIONS SHEET 3 OF 15 COLLEGE MILL TROUT FARM

Scale: 1:100

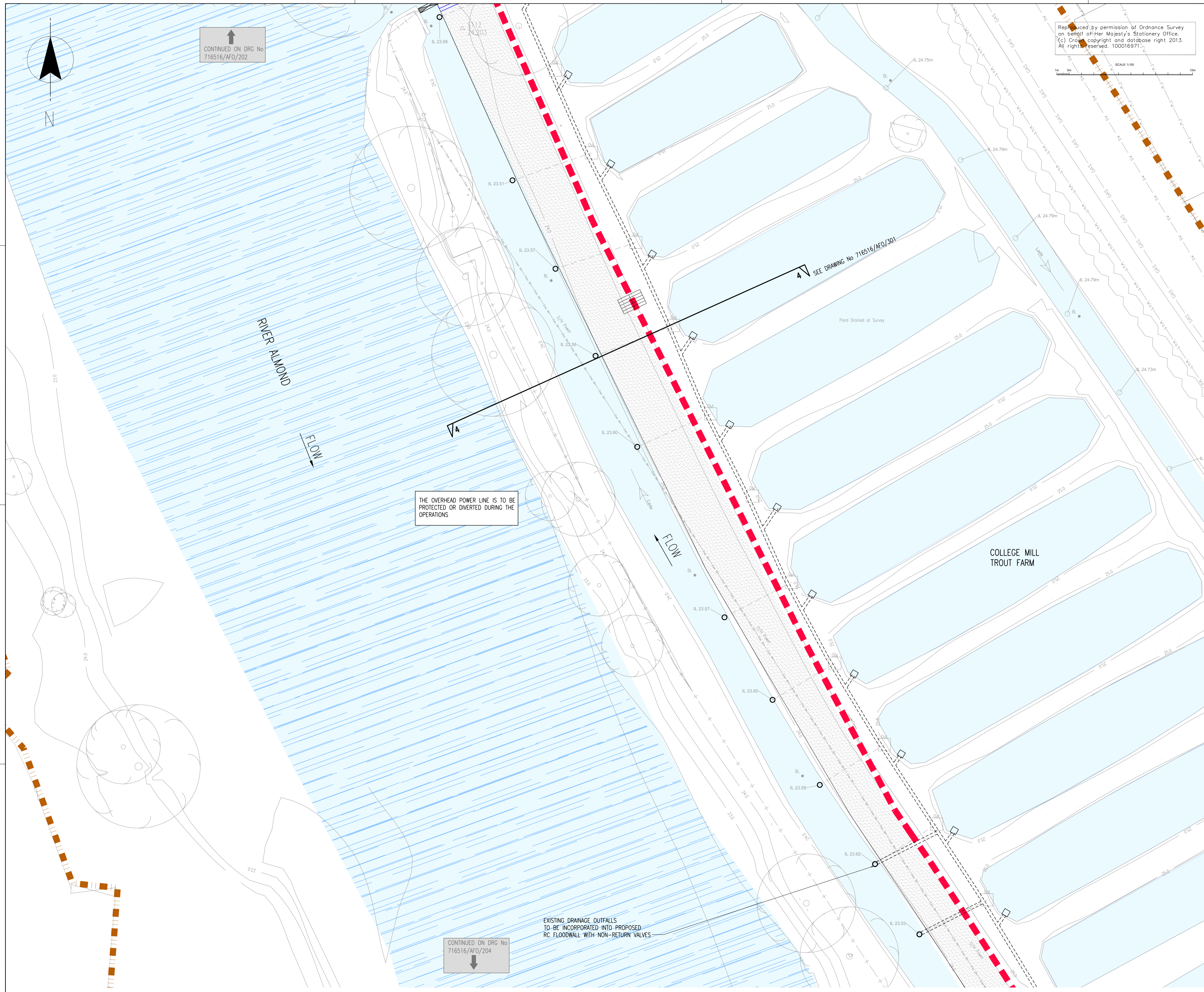
Purpose of Issue: FLOOD PROTECTION OPERATIONS

Office: LIVERPOOL

Tel No: 0151 237-4200

Drawing No: 716516/AFD/202

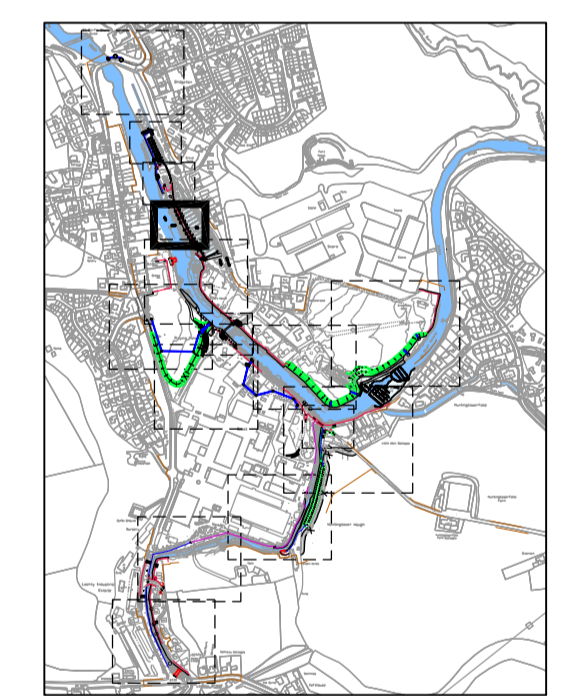
Version: E



- ### NOTES
- THESE PLANS ARE IN ACCORDANCE WITH THE REQUIREMENTS OF SECTION 60 AND SCHEDULE 2 OF THE FLOOD RISK MANAGEMENT (SCOTLAND) ACT 2009.
  - THESE PLANS ARE TO BE READ IN CONJUNCTION WITH THE ALMONDBANK FLOOD PROTECTION SCHEME 2013.
  - OPERATIONS ALONG THE LENGTH OF THE RIVER ALMOND AND THE EAST POW BURN WILL BE FINISHED WITH A SCHEME OF PLANTING AND LANDSCAPING.
  - ALL OUTFALLS WHICH DISCHARGE TO THE RIVER ALMOND AND THE EAST POW BURN IDENTIFIED WITHIN THE OPERATIONS, WILL INCORPORATE APPROPRIATE BACK FLOW PREVENTION MEASURES.
  - INFORMATION RECEIVED FROM STATUTORY UNDERTAKERS HAS BEEN USED TO IDENTIFY LOCATIONS OF SERVICES, EXACT LOCATIONS OF THESE SERVICES WILL BE DETERMINED DURING DETAILED DESIGN.

- ### LEGEND
- REINFORCED CONCRETE FLOOD WALL CAST WITH A SUITABLE AESTHETIC FINISH
  - RETAINING WALL
  - SHEET PILE WALL
  - SHEET PILE WALL WITH CLADDING
  - KERB DRAINAGE SYSTEM
  - PROPOSED SECURITY FENCING
  - LIMITS OF LAND AFFECTED BY THE OPERATIONS AND OF LAND UPON WHICH ENTRY IS REQUIRED FOR THE PURPOSE OF CARRYING OUT THE OPERATIONS AND EXECUTING TEMPORARY WORKS.
  - PROPOSED EROSION PROTECTION (EXACT EXTENTS TO BE DETERMINED AT DETAIL DESIGN)
  - EXISTING EROSION PROTECTION
  - RAISED ROAD/ACCESS TRACK
  - SURFACE WATER DRAINAGE CHANNEL
  - CONCRETE
  - GRAVEL
  - EMBANKMENT (WITH IMPERMEABLE CORE WHERE REQUIRED)
  - OUTFALL
  - SURFACE WATER DRAINAGE SYSTEM
  - SECONDARY SPILL OFF SYSTEM
  - SECTION MARKERS
  - EXISTING OUTFALL TO BE FITTED WITH NON-RETURN VALVES
  - START LOCATION OF REFERENCED OPERATION
  - ACCESS STEPS
  - GATE ACCESS
  - SLUICE

- ### SERVICES
- TELECOMS
  - OVERHEAD ELECTRICITY
  - UNDERGROUND ELECTRICITY
  - GAS
  - FOUL WATER
  - SURFACE WATER
  - WATER MAIN
  - COMBINED SEWER



THIS IS THE PLAN MARKED **716516/AF0/203** REFERRED TO IN THE FLOOD PROTECTION SCHEME FOR ALMONDBANK FLOOD PROTECTION SCHEME 2013

PROPER OFFICER

(Signature)

FOR PERTH AND KINROSS COUNCIL

(date)

Version	Amendment	Drawn Date	Checked Date	Approved Date
E	CLIENT AMENDMENTS	W.CHAMBERS 28.08.13	P.JAMBERT 28.08.13	N.COOTE 28.08.13
D	CLIENT AMENDMENTS	S.MCCOLLUM 30.05.13	P.JAMBERT 30.05.13	N.COOTE 30.05.13
C	CLIENT AMENDMENTS	S.MCCOLLUM 07.05.13	P.JAMBERT 07.05.13	N.COOTE 07.05.13
B	FOR INFORMATION	W.CHAMBERS 15.02.13	P.JAMBERT 15.02.13	N.COOTE 15.02.13
A	FOR INFORMATION	S.MCCOLLUM 30.04.12	W.CHAMBERS 08.05.12	N.COOTE 08.05.12

Project: ALMONDBANK FLOOD PROTECTION SCHEME

Client: PERTH & KINROSS COUNCIL

Drawing Title: FLOOD PROTECTION OPERATIONS SHEET 4 OF 15 COLLEGE MILL TROUT FARM

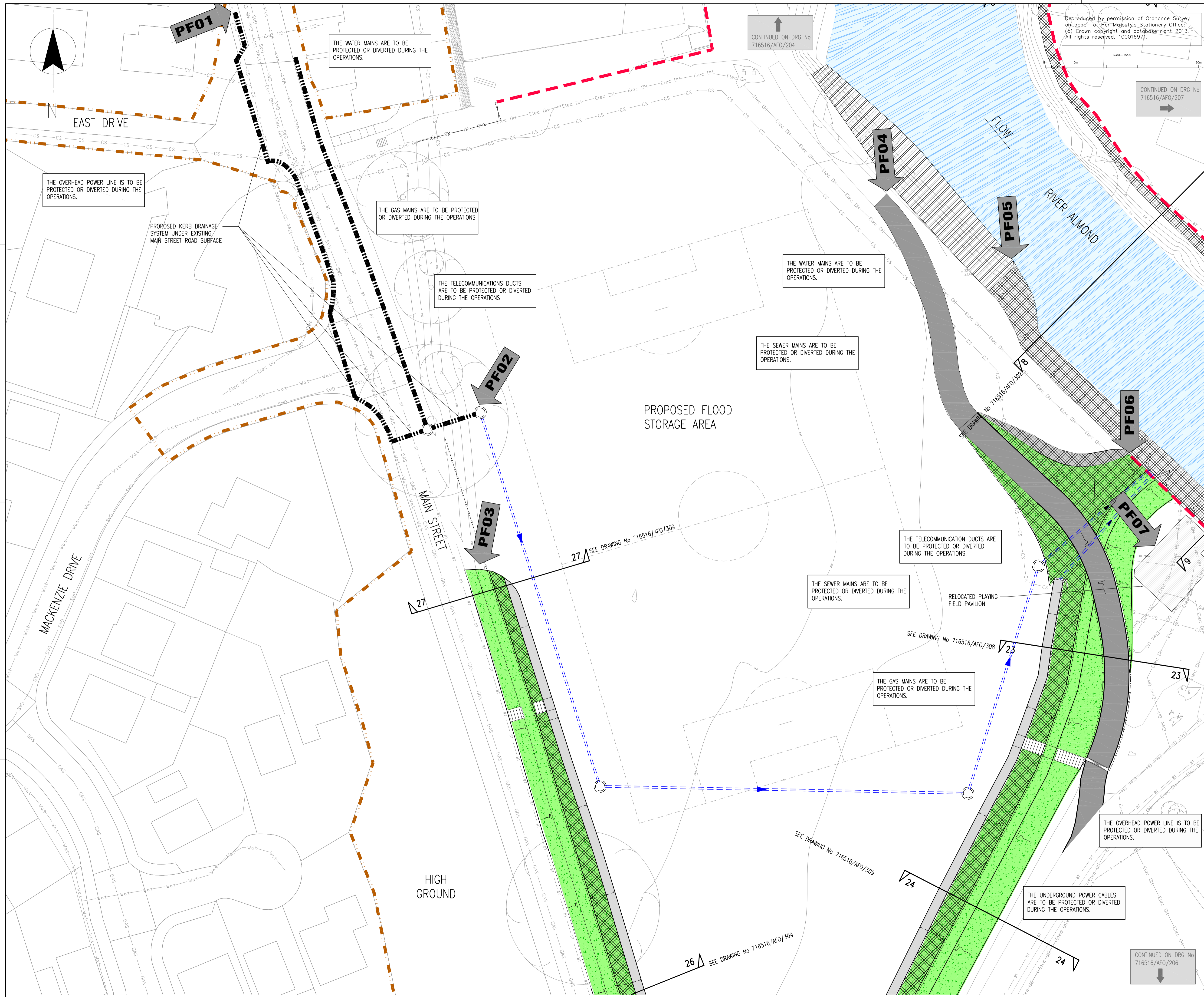
**mouchel** building great relationships

Scale (if not 1:100): 1:100

Purpose of Issue: FLOOD PROTECTION OPERATIONS

Office: LIVERPOOL	Tel No: 0151 237 4200	Drawing No: 716516/AF0/203	Version: E
-------------------	-----------------------	----------------------------	------------



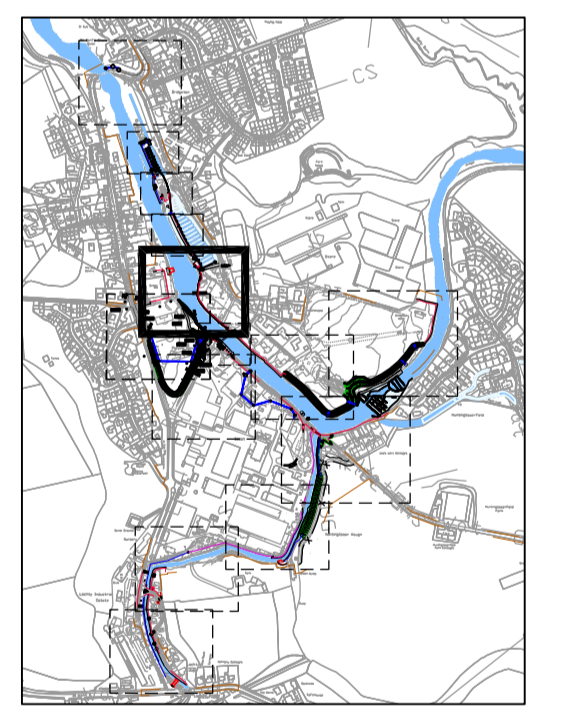


Reproduced by permission of Ordnance Survey on behalf of Her Majesty's Stationery Office. (c) Crown copyright and database right 2013. All rights reserved. 100016971.

- ### NOTES
- THESE PLANS ARE IN ACCORDANCE WITH THE REQUIREMENTS OF SECTION 60 AND SCHEDULE 2 OF THE FLOOD RISK MANAGEMENT (SCOTLAND) ACT 2009.
  - THESE PLANS ARE TO BE READ IN CONJUNCTION WITH THE ALMONDBANK FLOOD PROTECTION SCHEME 2013.
  - OPERATIONS ALONG THE LENGTH OF THE RIVER ALMOND AND THE EAST POW BURN WILL BE FINISHED WITH A SCHEME OF PLANTING AND LANDSCAPING.
  - ALL OUTFALLS WHICH DISCHARGE TO THE RIVER ALMOND AND THE EAST POW BURN IDENTIFIED WITHIN THE OPERATIONS, WILL INCORPORATE APPROPRIATE BACK FLOW PREVENTION MEASURES.
  - INFORMATION RECEIVED FROM STATUTORY UNDERTAKERS HAS BEEN USED TO IDENTIFY LOCATIONS OF SERVICES, EXACT LOCATIONS OF THESE SERVICES WILL BE DETERMINED DURING DETAILED DESIGN.

- ### LEGEND
- REINFORCED CONCRETE FLOOD WALL CAST WITH A SUITABLE AESTHETIC FINISH
  - RETAINING WALL
  - SHEET PILE WALL
  - SHEET PILE WALL WITH CLADDING
  - KERB DRAINAGE SYSTEM
  - PROPOSED SECURITY FENCING
  - LIMITS OF LAND AFFECTED BY THE OPERATIONS AND OF LAND UPON WHICH ENTRY IS REQUIRED FOR THE PURPOSE OF CARRYING OUT THE OPERATIONS AND EXECUTING TEMPORARY WORKS.
  - PROPOSED EROSION PROTECTION (EXACT EXTENTS TO BE DETERMINED AT DETAIL DESIGN)
  - EXISTING EROSION PROTECTION
  - RAISED ROAD/ACCESS TRACK
  - SURFACE WATER DRAINAGE CHANNEL
  - CONCRETE
  - GRAVEL
  - EMBANKMENT (WITH IMPERMEABLE CORE WHERE REQUIRED)
  - OUTFALL
  - SURFACE WATER DRAINAGE SYSTEM
  - SECONDARY SPILL OFF SYSTEM
  - EXISTING OUTFALL TO BE FITTED WITH NON-RETURN VALVES
  - ACCESS STEPS
  - SLUICE
  - GATE ACCESS

- ### SERVICES
- TELECOMS
  - OVERHEAD ELECTRICITY
  - UNDERGROUND ELECTRICITY
  - GAS
  - FOUL WATER
  - SURFACE WATER
  - WATER MAIN
  - COMBINED SEWER



THIS IS THE PLAN MARKED **716516/AFO/205** REFERRED TO IN THE FLOOD PROTECTION SCHEME FOR ALMONDBANK FLOOD PROTECTION SCHEME 2013

PROPER OFFICER  
(Signature)  
FOR PERTH AND KINROSS COUNCIL

Version	Amendment	Change Date	Checked Date	Approved Date
E	CLIENT AMENDMENTS	W CHAMBERS 20.04.13	PLAMBERT 20.04.13	N COOKE 20.04.13
D	CLIENT AMENDMENTS	S MACCOLLOCH 20.05.13	PLAMBERT 20.05.13	N COOKE 20.05.13
C	CLIENT AMENDMENTS	S MACCOLLOCH 07.05.13	PLAMBERT 07.05.13	N COOKE 07.05.13
B	FOR INFORMATION	W CHAMBERS 15.02.13	PLAMBERT 15.02.13	N COOKE 15.02.13
A	FOR INFORMATION	S MACCOLLOCH 30.04.12	W CHAMBERS 08.05.12	N COOKE 08.05.12

Project: ALMONDBANK FLOOD PROTECTION SCHEME

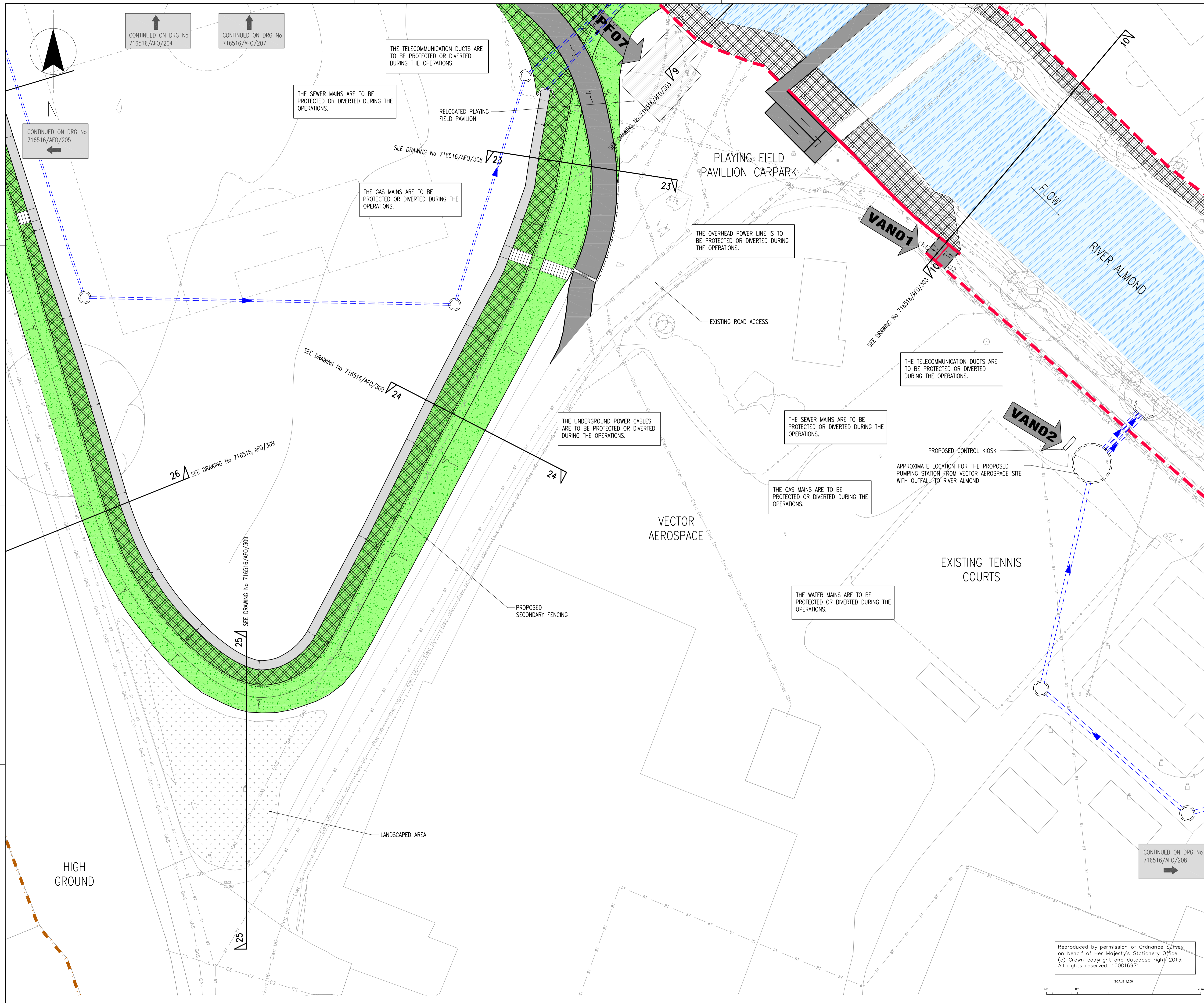
Drawing Title: FLOOD PROTECTION OPERATIONS SHEET 6 OF 15 PLAYING FIELD FLOOD STORAGE AREA

**mouchel** building great relationships

Scale: 1:200

Purpose of Issue: FLOOD PROTECTION OPERATIONS

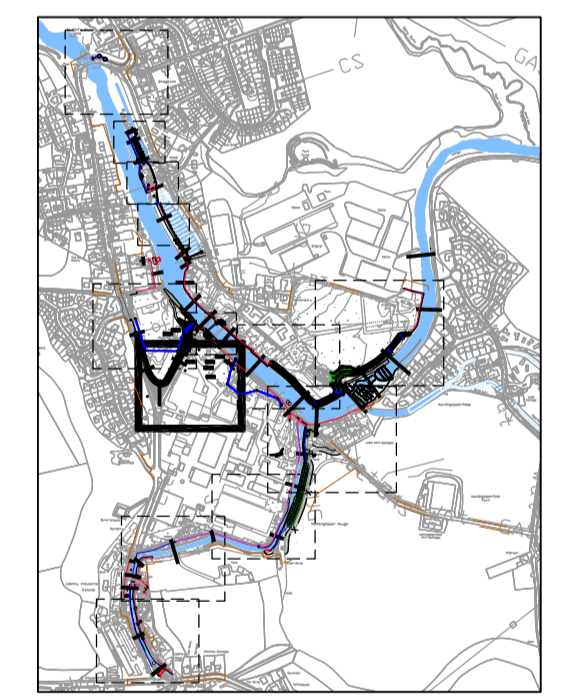
Office: LIVERPOOL | Tel No: 0151 242-4200 | Drawing No: 716516/AFO/205 | Version: E



- NOTES**
1. THESE PLANS ARE IN ACCORDANCE WITH THE REQUIREMENTS OF SECTION 60 AND SCHEDULE 2 OF THE FLOOD RISK MANAGEMENT (SCOTLAND) ACT 2009.
  2. THESE PLANS ARE TO BE READ IN CONJUNCTION WITH THE ALMONDBANK FLOOD PROTECTION SCHEME 2013.
  3. OPERATIONS ALONG THE LENGTH OF THE RIVER ALMOND AND THE EAST POW BURN WILL BE FINISHED WITH A SCHEME OF PLANTING AND LANDSCAPING.
  4. ALL OUTFALLS WHICH DISCHARGE TO THE RIVER ALMOND AND THE EAST POW BURN IDENTIFIED WITHIN THE OPERATIONS, WILL INCORPORATE APPROPRIATE BACK FLOW PREVENTION MEASURES.
  5. INFORMATION RECEIVED FROM STATUTORY UNDERTAKERS HAS BEEN USED TO IDENTIFY LOCATIONS OF SERVICES, EXACT LOCATIONS OF THESE SERVICES WILL BE DETERMINED DURING DETAILED DESIGN.

- LEGEND**
- REINFORCED CONCRETE FLOOD WALL CAST WITH A SUITABLE AESTHETIC FINISH.
  - RETAINING WALL
  - SHEET PILE WALL
  - SHEET PILE WALL WITH CLADDING
  - KERB DRAINAGE SYSTEM
  - PROPOSED SECURITY FENCING
  - LIMITS OF LAND AFFECTED BY THE OPERATIONS AND OF LAND UPON WHICH ENTRY IS REQUIRED FOR THE PURPOSE OF CARRYING OUT THE OPERATIONS AND EXECUTING TEMPORARY WORKS.
  - PROPOSED EROSION PROTECTION (EXACT EXTENTS TO BE DETERMINED AT DETAIL DESIGN)
  - EXISTING EROSION PROTECTION
  - RAISED ROAD/ACCESS TRACK
  - SURFACE WATER DRAINAGE CHANNEL
  - CONCRETE
  - GRAVEL
  - EMBANKMENT (WITH IMPERMEABLE CORE WHERE REQUIRED)
  - SECTION MARKERS
  - EXISTING OUTFALL TO BE FITTED WITH NON-RETURN VALVES
  - START LOCATION OF REFERENCED OPERATION
  - LOCKABLE BARRIER TO PREVENT VEHICLE ACCESS DURING FLOOD EVENT
  - ACCESS STEPS
  - SLUICE

- SERVICES**
- BT TELECOMS
  - OH OVERHEAD ELECTRICITY
  - UG UNDERGROUND ELECTRICITY
  - GAS
  - FW FOUL WATER
  - SW SURFACE WATER
  - W WATER MAIN
  - CS COMBINED SEWER



THIS IS THE PLAN MARKED **716516/AFO/206** REFERRED TO IN THE FLOOD PROTECTION SCHEME FOR ALMONDBANK FLOOD PROTECTION SCHEME 2013

PROPER OFFICER

(Signature)

FOR PERTH AND KINROSS COUNCIL

(Date)

Version	Drawn	Checked	Approved
E	CLIENT AMENDMENTS	W.CHAMBERS	J.LAMBERT
D	CLIENT AMENDMENTS	S.MCCOLLUCH	J.LAMBERT
C	CLIENT AMENDMENTS	S.MCCOLLUCH	J.LAMBERT
B	FOR INFORMATION	W.CHAMBERS	J.LAMBERT
A	FOR INFORMATION	S.MCCOLLUCH	W.CHAMBERS

Project: ALMONDBANK FLOOD PROTECTION SCHEME

Client: PERTH & KINROSS COUNCIL

Drawing Title: FLOOD PROTECTION OPERATIONS SHEET 7 OF 15 VECTOR AEROSPACE AND PLAYING FIELD FLOOD STORAGE AREA

Scale: 1:200

Purpose of Issue: FLOOD PROTECTION OPERATIONS

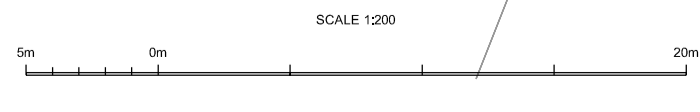
Office: LIVERPOOL

Tel No: 0151 237-4200

Drawing No: 716516/AFO/206

Version: E

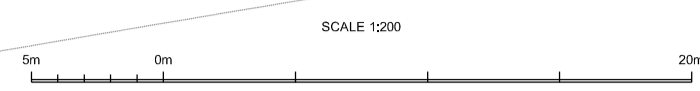
Reproduced by permission of Ordnance Survey on behalf of Her Majesty's Stationary Office. (c) Crown copyright and database right 2013. All rights reserved. 100016971.







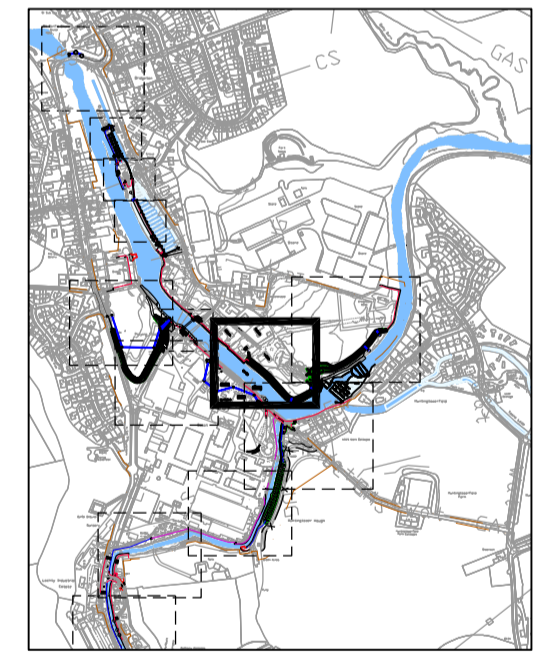
Reproduced by permission of Ordnance Survey on behalf of Her Majesty's Stationery Office. (c) Crown copyright and database right 2013. All rights reserved. 100016971.



- ### NOTES
1. THESE PLANS ARE IN ACCORDANCE WITH THE REQUIREMENTS OF SECTION 60 AND SCHEDULE 2 OF THE FLOOD RISK MANAGEMENT (SCOTLAND) ACT 2009.
  2. THESE PLANS ARE TO BE READ IN CONJUNCTION WITH THE ALMONDBANK FLOOD PROTECTION SCHEME 2013.
  3. OPERATIONS ALONG THE LENGTH OF THE RIVER ALMOND AND THE EAST POW BURN WILL BE FINISHED WITH A SCHEME OF PLANTING AND LANDSCAPING.
  4. ALL OUTFALLS WHICH DISCHARGE TO THE RIVER ALMOND AND THE EAST POW BURN IDENTIFIED WITHIN THE OPERATIONS, WILL INCORPORATE APPROPRIATE BACK FLOW PREVENTION MEASURES.
  5. INFORMATION RECEIVED FROM STATUTORY UNDERTAKERS HAS BEEN USED TO IDENTIFY LOCATIONS OF SERVICES, EXACT LOCATIONS OF THESE SERVICES WILL BE DETERMINED DURING DETAILED DESIGN.

- ### LEGEND
- REINFORCED CONCRETE FLOOD WALL CAST WITH A SUITABLE AESTHETIC FINISH
  - RETAINING WALL
  - SHEET PILE WALL
  - SHEET PILE WALL WITH CLADDING
  - KERB DRAINAGE SYSTEM
  - PROPOSED SECURITY FENCING
  - LIMITS OF LAND AFFECTED BY THE OPERATIONS AND OF LAND UPON WHICH ENTRY IS REQUIRED FOR THE PURPOSE OF CARRYING OUT THE OPERATIONS AND EXECUTING TEMPORARY WORKS.
  - PROPOSED EROSION PROTECTION (EXACT EXTENTS TO BE DETERMINED AT DETAIL DESIGN)
  - EXISTING EROSION PROTECTION
  - RAISED ROAD/ACCESS TRACK
  - SURFACE WATER DRAINAGE CHANNEL
  - CONCRETE
  - GRAVEL
  - OUTFALL
  - SURFACE WATER DRAINAGE SYSTEM
  - SECONDARY SPILL OFF SYSTEM
  - EMBANKMENT (WITH IMPERMEABLE CORE WHERE REQUIRED)
  - EXISTING OUTFALL TO BE FITTED WITH NON-RETURN VALVES
  - ACCESS STEPS
  - SLUICE

- ### SERVICES
- TELECOMS
  - OVERHEAD ELECTRICITY
  - UNDERGROUND ELECTRICITY
  - GAS
  - FOUL WATER
  - SURFACE WATER
  - WATER MAIN
  - COMBINED SEWER



THIS IS THE PLAN MARKED **716516/AFO/208** REFERRED TO IN THE FLOOD PROTECTION SCHEME FOR ALMONDBANK FLOOD PROTECTION SCHEME 2013

PROPER OFFICER  
(Signature)  
FOR PERTH AND KINROSS COUNCIL

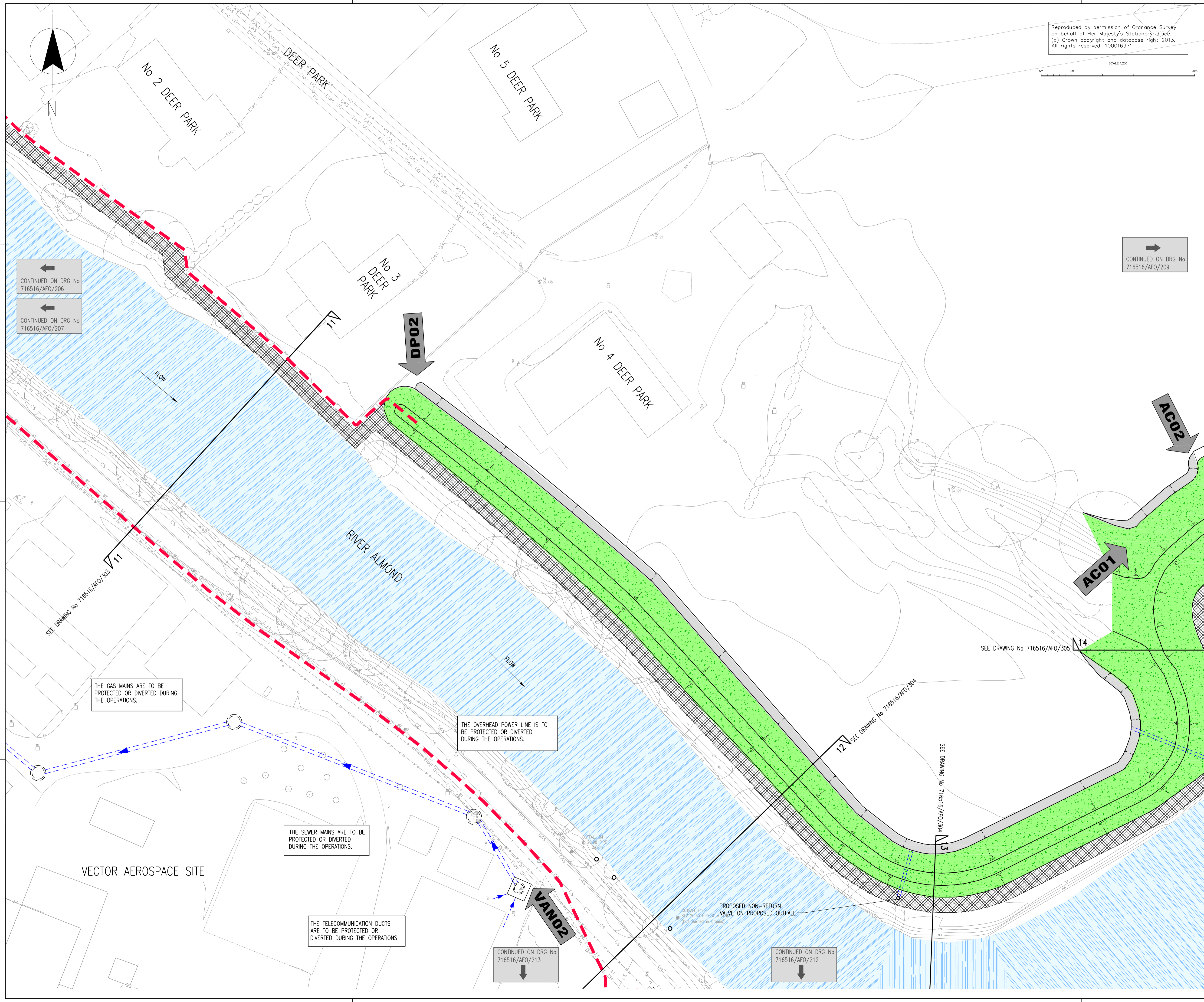
Version	Drawn	Checked	Approved
E	CLIENT AMENDMENTS	W.CHAMBERS 20.06.13	N.COOPER 20.06.13
D	CLIENT AMENDMENTS	S.MCCULLOUGH 30.05.13	J.FLANNERY 30.05.13
C	CLIENT AMENDMENTS	S.MCCULLOUGH 07.05.13	J.FLANNERY 07.05.13
B	FOR INFORMATION	W.CHAMBERS 15.02.13	N.COOPER 15.02.13
A	FOR INFORMATION	S.MCCULLOUGH 01.05.12	W.CHAMBERS 08.05.12

Project: ALMONDBANK FLOOD PROTECTION SCHEME  
Drawing Title: FLOOD PROTECTION OPERATIONS SHEET 9 OF 15 DEER PARK & VECTOR AEROSPACE

**mouchel** building great relationships

Scale: 1:200  
Purpose of Issue: FLOOD PROTECTION OPERATIONS

Office: LIVERPOOL Tel No: 0151 237-4200 Drawing No: 716516/AFO/208 Version: E



CONTINUED ON DRG No 716516/AFO/206

CONTINUED ON DRG No 716516/AFO/207

CONTINUED ON DRG No 716516/AFO/209

CONTINUED ON DRG No 716516/AFO/213

CONTINUED ON DRG No 716516/AFO/212

THE GAS MAINS ARE TO BE PROTECTED OR DIVERTED DURING THE OPERATIONS.

THE OVERHEAD POWER LINE IS TO BE PROTECTED OR DIVERTED DURING THE OPERATIONS.

THE SEWER MAINS ARE TO BE PROTECTED OR DIVERTED DURING THE OPERATIONS.

THE TELECOMMUNICATION DUCTS ARE TO BE PROTECTED OR DIVERTED DURING THE OPERATIONS.

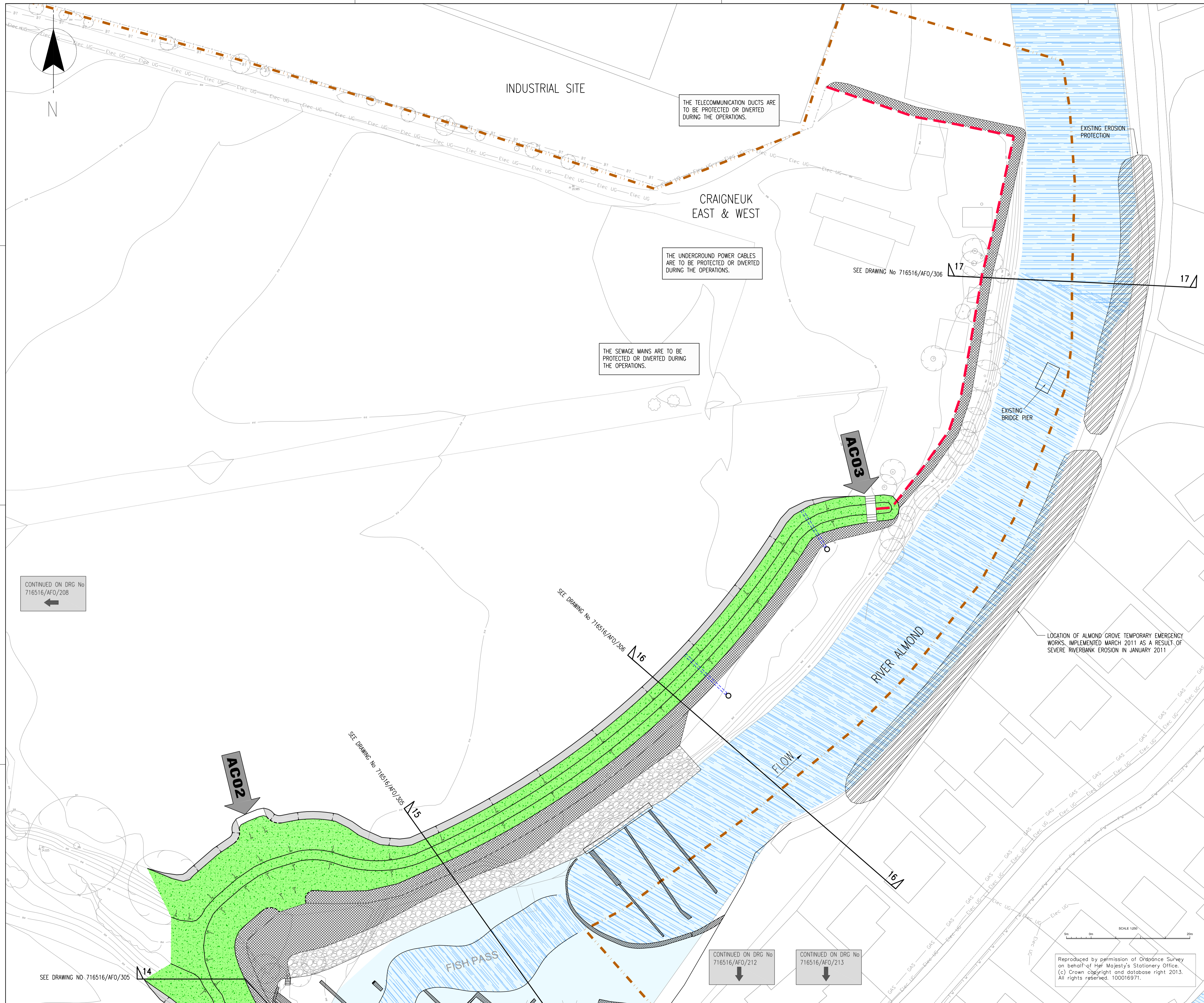
SEE DRAWING No 716516/AFO/303

SEE DRAWING No 716516/AFO/305

SEE DRAWING No 716516/AFO/304

SEE DRAWING No 716516/AFO/304

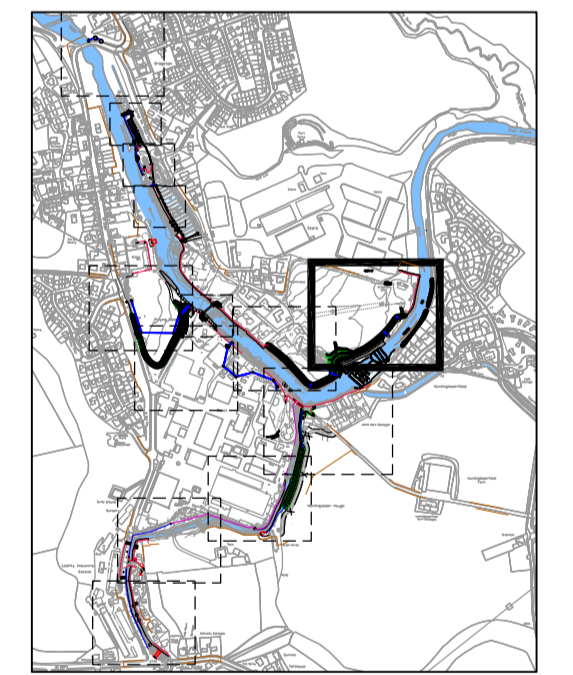
PROPOSED NON-RETURN VALVE ON PROPOSED OUTFALL



- NOTES**
1. THESE PLANS ARE IN ACCORDANCE WITH THE REQUIREMENTS OF SECTION 60 AND SCHEDULE 2 OF THE FLOOD RISK MANAGEMENT (SCOTLAND) ACT 2009.
  2. THESE PLANS ARE TO BE READ IN CONJUNCTION WITH THE ALMONDBANK FLOOD PROTECTION SCHEME 2013.
  3. OPERATIONS ALONG THE LENGTH OF THE RIVER ALMOND AND THE EAST POW BURN WILL BE FINISHED WITH A SCHEME OF PLANTING AND LANDSCAPING.
  4. ALL OUTFALLS WHICH DISCHARGE TO THE RIVER ALMOND AND THE EAST POW BURN IDENTIFIED WITHIN THE OPERATIONS, WILL INCORPORATE APPROPRIATE BACK FLOW PREVENTION MEASURES.
  5. INFORMATION RECEIVED FROM STATUTORY UNDERTAKERS HAS BEEN USED TO IDENTIFY LOCATIONS OF SERVICES, EXACT LOCATIONS OF THESE SERVICES WILL BE DETERMINED DURING DETAILED DESIGN.

- LEGEND**
- REINFORCED CONCRETE FLOOD WALL CAST WITH A SUITABLE AESTHETIC FINISH
  - RETAINING WALL
  - SHEET PILE WALL
  - SHEET PILE WALL WITH CLADDING
  - KERB DRAINAGE SYSTEM
  - PROPOSED SECURITY FENCING
  - LIMITS OF LAND AFFECTED BY THE OPERATIONS AND OF LAND UPON WHICH ENTRY IS REQUIRED FOR THE PURPOSE OF CARRYING OUT THE OPERATIONS AND EXECUTING TEMPORARY WORKS.
  - PROPOSED EROSION PROTECTION (EXACT EXTENTS TO BE DETERMINED AT DETAIL DESIGN)
  - EXISTING EROSION PROTECTION
  - RAISED ROAD/ACCESS TRACK
  - SURFACE WATER DRAINAGE CHANNEL
  - CONCRETE
  - GRAVEL
  - EXISTING ROCK ARMOUR
  - OUTFALL
  - SURFACE WATER DRAINAGE SYSTEM
  - SECONDARY SPILL OFF SYSTEM
  - EMBANKMENT (WITH IMPERMEABLE CORE WHERE REQUIRED)
  - SECTION MARKERS
  - EXISTING OUTFALL TO BE FITTED WITH NON-RETURN VALVES
  - START LOCATION OF REFERENCED OPERATION
  - ACCESS STEPS
  - GATE ACCESS
  - SLUICE

- SERVICES**
- BT TELECOMS
  - OVERHEAD ELECTRICITY
  - UNDERGROUND ELECTRICITY
  - GAS
  - FOUL WATER
  - SURFACE WATER
  - WATER MAIN
  - COMBINED SEWER



THIS IS THE PLAN MARKED **716516/AFO/208** REFERRED TO IN THE FLOOD PROTECTION SCHEME FOR ALMONDBANK FLOOD PROTECTION SCHEME 2013

PROPER OFFICER

(Signature) \_\_\_\_\_

FOR PERTH AND KINROSS COUNCIL

(date) \_\_\_\_\_

Version	Amendment	Date	Checked	Approved
E	CLIENT AMENDMENTS	28.08.13	S.MCLOUGHDY	P.JAMBERT
D	CLIENT AMENDMENTS	30.05.13	S.MCLOUGHDY	P.JAMBERT
C	CLIENT AMENDMENTS	07.05.13	S.MCLOUGHDY	P.JAMBERT
B	FOR INFORMATION	15.02.13	S.MCLOUGHDY	P.JAMBERT
A	FOR INFORMATION	01.05.12	S.MCLOUGHDY	P.JAMBERT

Project: ALMONDBANK FLOOD PROTECTION SCHEME

Client: PERTH & KINROSS COUNCIL

Drawing Title: FLOOD PROTECTION OPERATIONS SHEET 10 OF 15 CRAIGNEUK EAST & WEST

Scale: 1:250

Purpose of Issue: FLOOD PROTECTION OPERATIONS

**mouchel** building great relationships

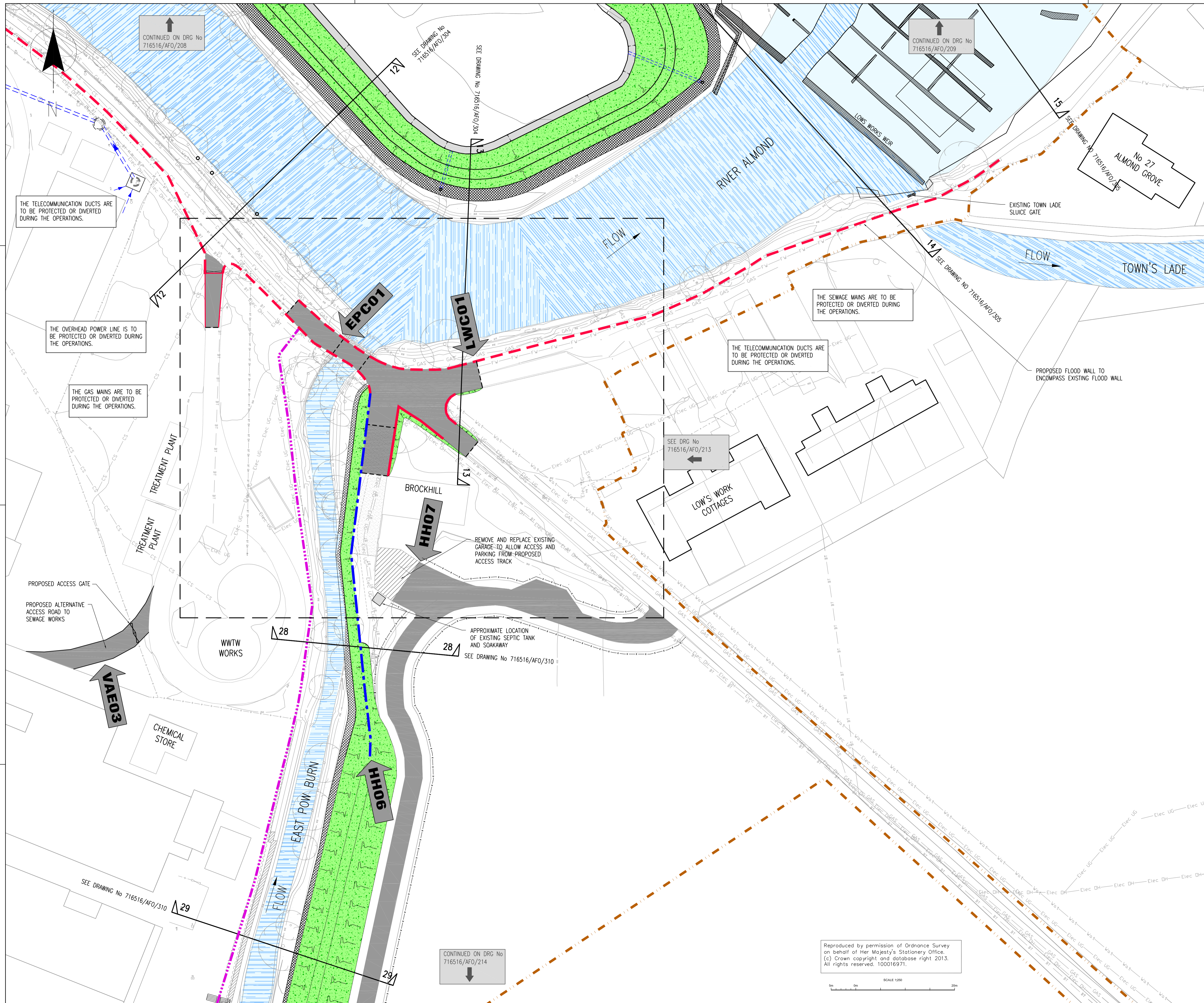
Office: LIVERPOOL | Tel No: 0151 237-4200 | Drawing No: 716516/AFO/209 | Version: E

CONTINUED ON DRG No 716516/AFO/208

CONTINUED ON DRG No 716516/AFO/212

CONTINUED ON DRG No 716516/AFO/213

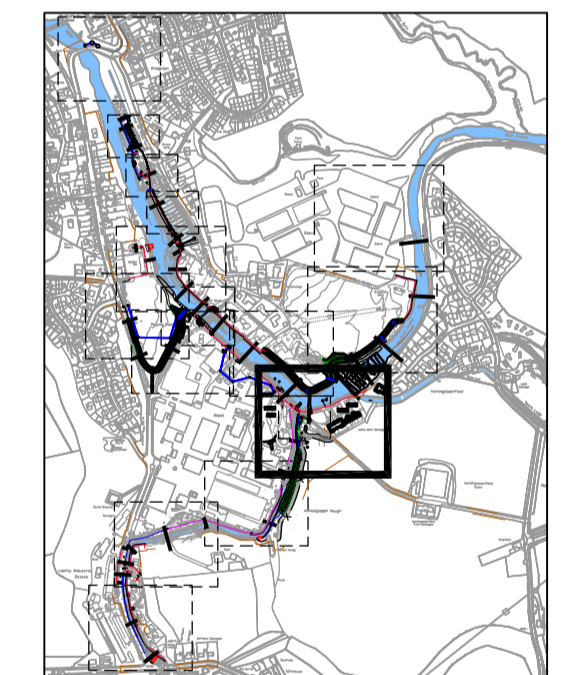
Reproduced by permission of Ordnance Survey on behalf of Her Majesty's Stationary Office. (c) Crown copyright and database right 2013. All rights reserved. 100016971.



- ### NOTES
- THESE PLANS ARE IN ACCORDANCE WITH THE REQUIREMENTS OF SECTION 60 AND SCHEDULE 2 OF THE FLOOD RISK MANAGEMENT (SCOTLAND) ACT 2009.
  - THESE PLANS ARE TO BE READ IN CONJUNCTION WITH THE ALMONDBANK FLOOD PROTECTION SCHEME 2013.
  - OPERATIONS ALONG THE LENGTH OF THE RIVER ALMOND AND THE EAST POW BURN WILL BE FINISHED WITH A SCHEME OF PLANTING AND LANDSCAPING.
  - ALL OUTFALLS WHICH DISCHARGE TO THE RIVER ALMOND AND THE EAST POW BURN IDENTIFIED WITHIN THE OPERATIONS, WILL INCORPORATE APPROPRIATE BACK FLOW PREVENTION MEASURES.
  - INFORMATION RECEIVED FROM STATUTORY UNDERTAKERS HAS BEEN USED TO IDENTIFY LOCATIONS OF SERVICES, EXACT LOCATIONS OF THESE SERVICES WILL BE DETERMINED DURING DETAILED DESIGN.

- ### LEGEND
- REINFORCED CONCRETE FLOOD WALL CAST WITH A SUITABLE AESTHETIC FINISH
  - RETAINING WALL
  - SHEET PILE WALL
  - SHEET PILE WALL WITH CLADDING
  - KERB DRAINAGE SYSTEM
  - PROPOSED SECURITY FENCING
  - LIMITS OF LAND AFFECTED BY THE OPERATIONS AND OF LAND UPON WHICH ENTRY IS REQUIRED FOR THE PURPOSE OF CARRYING OUT THE OPERATIONS AND EXECUTING TEMPORARY WORKS.
  - PROPOSED EROSION PROTECTION (EXACT EXTENTS TO BE DETERMINED AT DETAIL DESIGN)
  - EXISTING EROSION PROTECTION
  - RAISED ROAD/ACCESS TRACK
  - SURFACE WATER DRAINAGE CHANNEL
  - CONCRETE
  - GRAVEL
  - EMBANKMENT (WITH IMPERMEABLE CORE WHERE REQUIRED)
  - OUTFALL
  - SURFACE WATER DRAINAGE SYSTEM
  - SECONDARY SPILL OFF SYSTEM
  - EXISTING OUTFALL TO BE FITTED WITH NON-RETURN VALVES
  - ACCESS STEPS
  - SLUICE

- ### SERVICES
- TELECOMS
  - OVERHEAD ELECTRICITY
  - UNDERGROUND ELECTRICITY
  - GAS
  - FOUL WATER
  - SURFACE WATER
  - WATER MAIN
  - COMBINED SEWER



THIS IS THE PLAN MARKED 716516/AFO/212 REFERRED TO IN THE FLOOD PROTECTION SCHEME FOR ALMONDBANK FLOOD PROTECTION SCHEME 2013.

PROPER OFFICER

(Signature)

FOR PERTH AND KINROSS COUNCIL

(date)

Version	Amendment	Drawn Date	Checked Date	Approved Date
F	CLIENT AMENDMENTS	28.06.13	28.06.13	N COOKE
E	CLIENT AMENDMENTS	17.06.13	17.06.13	N COOKE
D	CLIENT AMENDMENTS	30.05.13	30.05.13	N COOKE
C	CLIENT AMENDMENTS	07.05.13	07.05.13	N COOKE
B	FOR INFORMATION	15.02.13	15.02.13	N COOKE
A	FOR INFORMATION	02.05.12	08.05.12	N COOKE

Project: ALMONDBANK FLOOD PROTECTION SCHEME

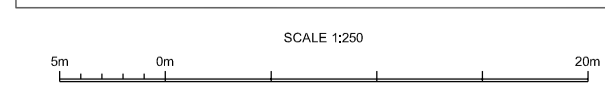
Drawing Title: FLOOD PROTECTION OPERATIONS SHEET 11 OF 15 CONFLUENCE OF RIVER ALMOND & EAST POW BURN

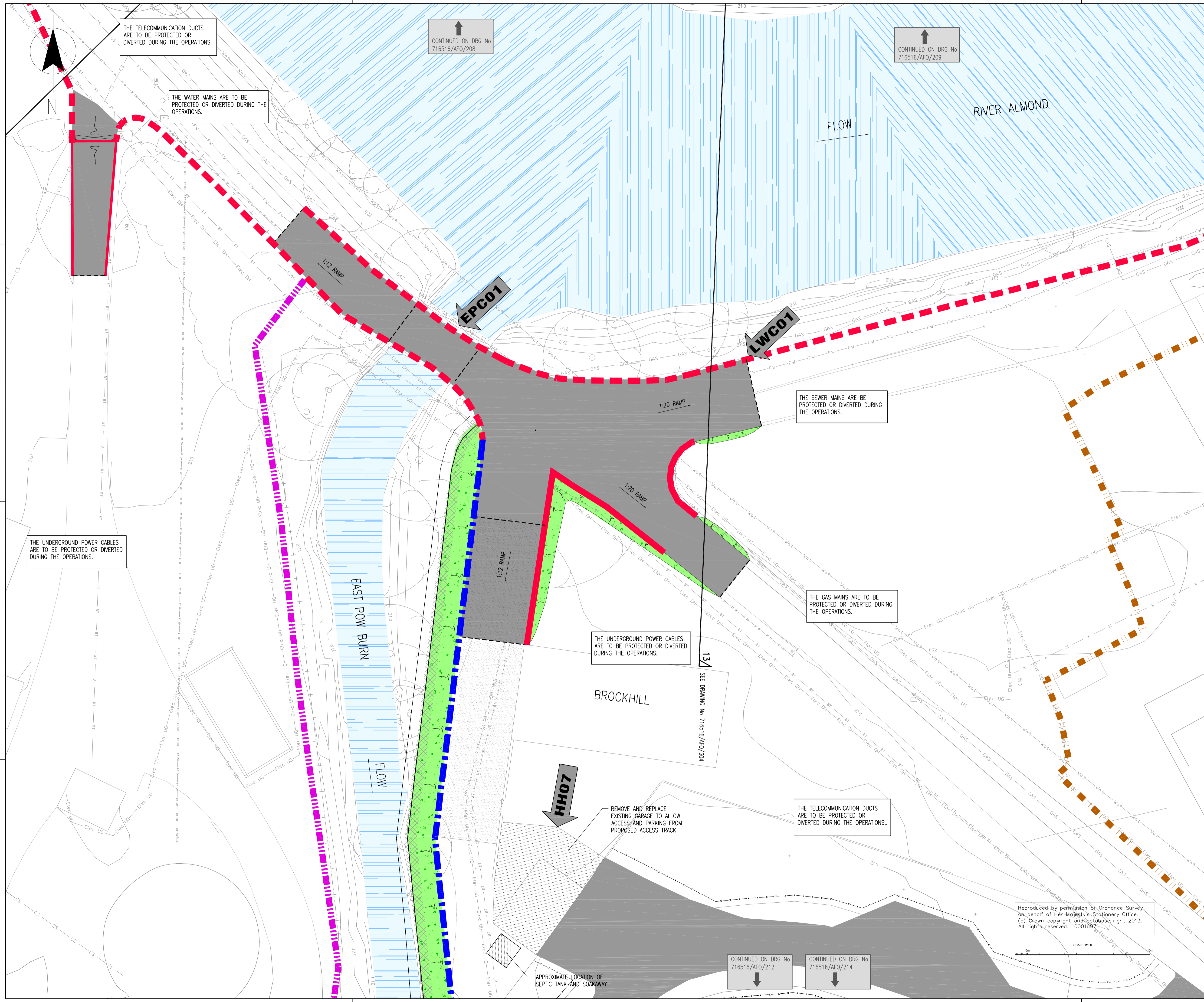
Scale: 1:250

Purpose of Issue: FLOOD PROTECTION OPERATIONS

Office: LIVERPOOL | Tel No: 0151 237-4200 | Drawing No: 716516/AFO/212 | Version: F

Reproduced by permission of Ordnance Survey on behalf of Her Majesty's Stationary Office. (c) Crown copyright and database right 2013. All rights reserved. 100016971.

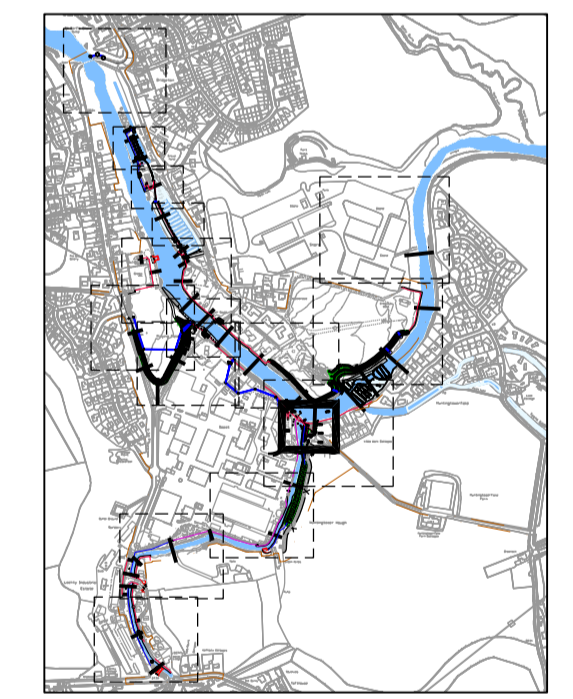




- NOTES**
1. THESE PLANS ARE IN ACCORDANCE WITH THE REQUIREMENTS OF SECTION 60 AND SCHEDULE 2 OF THE FLOOD RISK MANAGEMENT (SCOTLAND) ACT 2009.
  2. THESE PLANS ARE TO BE READ IN CONJUNCTION WITH THE ALMONDBANK FLOOD PROTECTION SCHEME 2013.
  3. OPERATIONS ALONG THE LENGTH OF THE RIVER ALMOND AND THE EAST POW BURN WILL BE FINISHED WITH A SCHEME OF PLANTING AND LANDSCAPING. ALL OUTFALLS WHICH DISCHARGE TO THE RIVER ALMOND AND THE EAST POW BURN IDENTIFIED WITHIN THE OPERATIONS, WILL INCORPORATE APPROPRIATE BACK FLOW PREVENTION MEASURES.
  4. INFORMATION RECEIVED FROM STATUTORY UNDERTAKERS HAS BEEN USED TO IDENTIFY LOCATIONS OF SERVICES, EXACT LOCATIONS OF THESE SERVICES WILL BE DETERMINED DURING DETAILED DESIGN.

- LEGEND**
- REINFORCED CONCRETE FLOOD WALL CAST WITH A SUITABLE AESTHETIC FINISH
  - RETAINING WALL
  - SHEET PILE WALL
  - SHEET PILE WALL WITH CLADDING
  - KERB DRAINAGE SYSTEM
  - PROPOSED SECURITY FENCING
  - LIMITS OF LAND AFFECTED BY THE OPERATIONS AND OF LAND UPON WHICH ENTRY IS REQUIRED FOR THE PURPOSE OF CARRYING OUT THE OPERATIONS AND EXECUTING TEMPORARY WORKS.
  - PROPOSED EROSION PROTECTION (EXACT EXTENTS TO BE DETERMINED AT DETAIL DESIGN)
  - EXISTING EROSION PROTECTION
  - RAISED ROAD/ACCESS TRACK
  - SURFACE WATER DRAINAGE CHANNEL
  - CONCRETE
  - GRAVEL
  - EMBANKMENT (WITH IMPERMEABLE CORE WHERE REQUIRED)
  - OUTFALL
  - SURFACE WATER DRAINAGE SYSTEM
  - SECONDARY SPILL OFF SYSTEM
  - EXISTING OUTFALL TO BE FITTED WITH NON-RETURN VALVES
  - ACCESS STEPS
  - SLUICE

- SERVICES**
- BT BT TELECOMS
  - FW FW FOUL WATER
  - EH OH OVERHEAD ELECTRICITY
  - SW SW SURFACE WATER
  - EU UG UNDERGROUND ELECTRICITY
  - WAT WAT WATER MAIN
  - GAS GAS COMBINED SEWER



THIS IS THE PLAN MARKED **716516/AFO/213** REFERRED TO IN THE FLOOD PROTECTION SCHEME FOR ALMONDBANK FLOOD PROTECTION SCHEME 2013.

PROPER OFFICER  
(Signature)  
FOR PERTH AND KINROSS COUNCIL

Version	Client	Drawn	Checked	Approved
F	CLIENT AMENDMENTS	28.06.13	28.06.13	N COOKE
E	CLIENT AMENDMENTS	17.06.13	17.06.13	N COOKE
D	CLIENT AMENDMENTS	30.05.13	30.05.13	N COOKE
C	CLIENT AMENDMENTS	07.05.13	07.05.13	N COOKE
B	FOR INFORMATION	15.02.13	15.02.13	N COOKE
A	FOR INFORMATION	02.05.12	08.05.12	N COOKE

Project: **ALMONDBANK FLOOD PROTECTION SCHEME**

Drawing Title: **FLOOD PROTECTION OPERATIONS SHEET 12 OF 15 CONFLUENCE OF RIVER ALMOND & EAST POW BURN**

**mouchel** building great relationships

Scale: 1:100

Purpose of Issue: **FLOOD PROTECTION OPERATIONS**

Office: **LIVERPOOL** Tel No: **0151 237-4200** Drawing No: **716516/AFO/213** Version: **F**

CONTINUED ON DRG No 716516/AFO/208

CONTINUED ON DRG No 716516/AFO/209

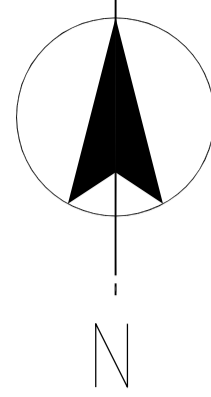
CONTINUED ON DRG No 716516/AFO/212

CONTINUED ON DRG No 716516/AFO/214

Reproduced by permission of Ordnance Survey on behalf of Her Majesty's Stationary Office. (c) Crown copyright and database right 2013. All rights reserved. 100016371

SCALE 1:100

APPROXIMATE LOCATION OF SEPTIC TANK AND SOAKAWAY



CONTINUED ON DRG No 716516/AFO/212

CONTINUED ON DRG No 716516/AFO/213

SEE DRAWING No 716516/AFO/310  $\Delta$  29

VECTOR AEROSPACE

CONTINUED ON DRG No 716516/AFO/215

HUNTINGTOWER HAUGH

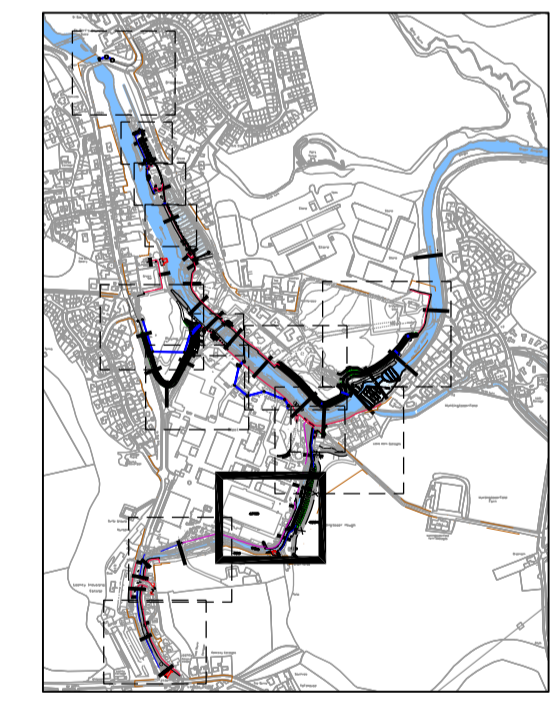
HIGH GROUND

PUDDLEDUB

- NOTES**
1. THESE PLANS ARE IN ACCORDANCE WITH THE REQUIREMENTS OF SECTION 60 AND SCHEDULE 2 OF THE FLOOD RISK MANAGEMENT (SCOTLAND) ACT 2009.
  2. THESE PLANS ARE TO BE READ IN CONJUNCTION WITH THE ALMONDBANK FLOOD PROTECTION SCHEME 2013.
  3. OPERATIONS ALONG THE LENGTH OF THE RIVER ALMOND AND THE EAST POW BURN WILL BE FINISHED WITH A SCHEME OF PLANTING AND LANDSCAPING.
  4. ALL OUTFALLS WHICH DISCHARGE TO THE RIVER ALMOND AND THE EAST POW BURN IDENTIFIED WITHIN THE OPERATIONS, WILL INCORPORATE APPROPRIATE BACK FLOW PREVENTION MEASURES.
  5. INFORMATION RECEIVED FROM STATUTORY UNDERTAKERS HAS BEEN USED TO IDENTIFY LOCATIONS OF SERVICES, EXACT LOCATIONS OF THESE SERVICES WILL BE DETERMINED DURING DETAILED DESIGN.

- LEGEND**
- REINFORCED CONCRETE FLOOD WALL CAST WITH A SUITABLE AESTHETIC FINISH
  - RETAINING WALL
  - SHEET PILE WALL
  - SHEET PILE WALL WITH CLADDING
  - KERB DRAINAGE SYSTEM
  - PROPOSED SECURITY FENCING
  - LIMITS OF LAND AFFECTED BY THE OPERATIONS AND OF LAND UPON WHICH ENTRY IS REQUIRED FOR THE PURPOSE OF CARRYING OUT THE OPERATIONS AND EXECUTING TEMPORARY WORKS.
  - PROPOSED EROSION PROTECTION (EXACT EXTENTS TO BE DETERMINED AT DETAIL DESIGN)
  - EXISTING EROSION PROTECTION
  - RAISED ROAD/ACCESS TRACK
  - SURFACE WATER DRAINAGE CHANNEL
  - CONCRETE
  - GRAVEL
  - EMBANKMENT (WITH IMPERMEABLE CORE WHERE REQUIRED)
  - OUTFALL
  - SURFACE WATER DRAINAGE SYSTEM
  - SECONDARY SPILL OFF SYSTEM
  - EXISTING OUTFALL TO BE FITTED WITH NON-RETURN VALVES
  - ACCESS STEPS
  - SLUICE

- SERVICES**
- BT TELECOMS
  - Overhead Electricity
  - Underground Electricity
  - GAS
  - Foul Water
  - Surface Water
  - Water Main
  - Combined Sewer



THIS IS THE PLAN MARKED 716516/AFO/214 REFERRED TO IN THE FLOOD PROTECTION SCHEME FOR ALMONDBANK FLOOD PROTECTION SCHEME 2013

PROPER OFFICER

(Signature)

FOR PERTH AND KINROSS COUNCIL

(date)

E	CLIENT AMENDMENTS	W CHAMBERS	P JAMBERT	N COOKE
D	CLIENT AMENDMENTS	S MCCOLLLOCH	P JAMBERT	N COOKE
C	CLIENT AMENDMENTS	S MCCOLLLOCH	P JAMBERT	N COOKE
B	FOR INFORMATION	W CHAMBERS	P JAMBERT	N COOKE
A	FOR INFORMATION	S MCCOLLLOCH	W CHAMBERS	N COOKE
Version:	Amendment	Drawn Date	Checked Date	Approved Date

Project: ALMONDBANK FLOOD PROTECTION SCHEME

Client: PERTH & KINROSS COUNCIL

Drawing Title: FLOOD PROTECTION OPERATIONS SHEET 13 OF 15 VECTOR AEROSPACE

**mouchel** building great relationships

Scale of All Notes: 1:200

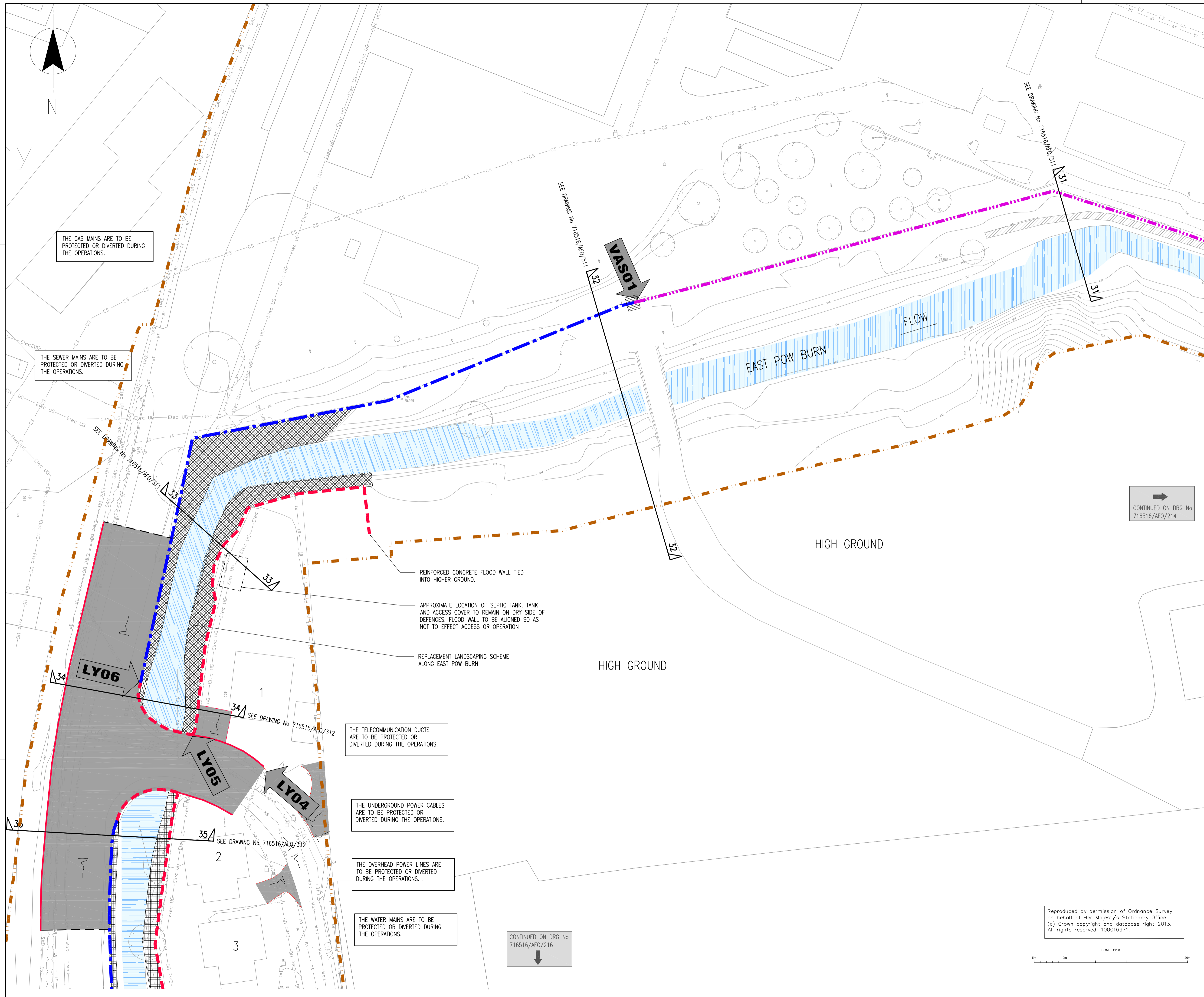
Purpose of Issue: FLOOD PROTECTION OPERATIONS

Office: LIVERPOOL | Tel No: 0151 237-4200 | Drawing No: 716516/AFO/214 | Version: E

Reproduced by permission of Ordnance Survey on behalf of Her Majesty's Stationary Office. (c) Crown copyright and database right 2013. All rights reserved. 100016971.

SCALE 1:200

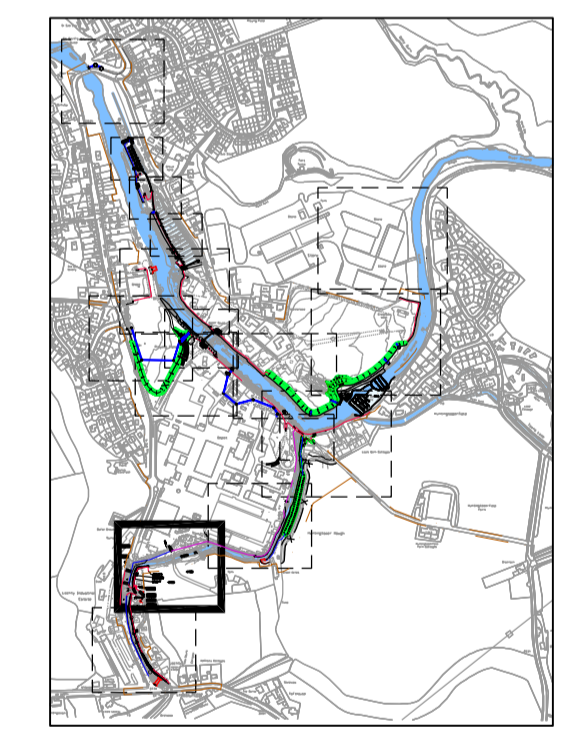




- NOTES**
1. THESE PLANS ARE IN ACCORDANCE WITH THE REQUIREMENTS OF SECTION 60 AND SCHEDULE 2 OF THE FLOOD RISK MANAGEMENT (SCOTLAND) ACT 2009.
  2. THESE PLANS ARE TO BE READ IN CONJUNCTION WITH THE ALMONDBANK FLOOD PROTECTION SCHEME 2013.
  3. OPERATIONS ALONG THE LENGTH OF THE RIVER ALMOND AND THE EAST POW BURN WILL BE FINISHED WITH A SCHEME OF PLANTING AND LANDSCAPING. ALL OUTFALLS WHICH DISCHARGE TO THE RIVER ALMOND AND THE EAST POW BURN IDENTIFIED WITHIN THE OPERATIONS, WILL INCORPORATE APPROPRIATE BACK FLOW PREVENTION MEASURES.
  4. INFORMATION RECEIVED FROM STATUTORY UNDERTAKERS HAS BEEN USED TO IDENTIFY LOCATIONS OF SERVICES, EXACT LOCATIONS OF THESE SERVICES WILL BE DETERMINED DURING DETAILED DESIGN.

- LEGEND**
- REINFORCED CONCRETE FLOOD WALL CAST WITH A SUITABLE AESTHETIC FINISH
  - RETAINING WALL
  - SHEET PILE WALL
  - SHEET PILE WALL WITH CLADDING
  - KERB DRAINAGE SYSTEM
  - PROPOSED SECURITY FENCING
  - LIMITS OF LAND AFFECTED BY THE OPERATIONS AND OF LAND UPON WHICH ENTRY IS REQUIRED FOR THE PURPOSE OF CARRYING OUT THE OPERATIONS AND EXECUTING TEMPORARY WORKS.
  - PROPOSED EROSION PROTECTION (EXACT EXTENTS TO BE DETERMINED AT DETAIL DESIGN)
  - EXISTING EROSION PROTECTION
  - RAISED ROAD/ACCESS TRACK
  - SURFACE WATER DRAINAGE CHANNEL
  - CONCRETE
  - GRAVEL
  - EMBANKMENT (WITH IMPERMEABLE CORE WHERE REQUIRED)
  - EXISTING OUTFALL TO BE FITTED WITH NON-RETURN VALVES
  - ACCESS STEPS
  - SLUICE
  - SECTION MARKERS
  - START LOCATION OF REFERENCED OPERATION
  - GATE ACCESS
  - OUTFALL
  - SURFACE WATER DRAINAGE SYSTEM
  - SECONDARY SPILL OFF SYSTEM

- SERVICES**
- TELECOMS
  - OVERHEAD ELECTRICITY
  - UNDERGROUND ELECTRICITY
  - GAS
  - FOWL WATER
  - SURFACE WATER
  - WATER MAIN
  - COMBINED SEWER



THIS IS THE PLAN MARKED **716516/WO/215** REFERRED TO IN THE FLOOD PROTECTION SCHEME FOR ALMONDBANK FLOOD PROTECTION SCHEME 2013

PROPER OFFICER

(Signature)

FOR PERTH AND KINROSS COUNCIL

(date)

Version	Amendment	Drawn Date	Checked Date	Approved Date
E	CLIENT AMENDMENTS	W.DHAWERS 28.08.13	P.JAMBERT 28.08.13	N.DOOKE 28.08.13
D	CLIENT AMENDMENTS	S.MCCULLOUGH 30.05.13	P.JAMBERT 30.05.13	N.DOOKE 30.05.13
C	CLIENT AMENDMENTS	S.MCCULLOUGH 07.05.13	P.JAMBERT 07.05.13	N.DOOKE 07.05.13
B	FOR INFORMATION	W.DHAWERS 15.02.13	P.JAMBERT 15.02.13	N.DOOKE 15.02.13
A	FOR INFORMATION	S.MCCULLOUGH 02.05.12	W.DHAWERS 08.05.12	N.DOOKE 08.05.12

Project: ALMONDBANK FLOOD PROTECTION SCHEME

Drawing Title: FLOOD PROTECTION OPERATIONS SHEET 14 OF 15 LOCHTY PARK AND VECTOR AEROSPACE

Scale: 1:200

Purpose of Issue: FLOOD PROTECTION OPERATIONS

Office: LIVERPOOL

Tel No: 0151 237-4200

Drawing No: 716516/AFO/215

Version: E

THE GAS MAINS ARE TO BE PROTECTED OR DIVERTED DURING THE OPERATIONS.

THE SEWER MAINS ARE TO BE PROTECTED OR DIVERTED DURING THE OPERATIONS.

REINFORCED CONCRETE FLOOD WALL TIED INTO HIGHER GROUND.

APPROXIMATE LOCATION OF SEPTIC TANK, TANK AND ACCESS COVER TO REMAIN ON DRY SIDE OF DEFENCES. FLOOD WALL TO BE ALIGNED SO AS NOT TO EFFECT ACCESS OR OPERATION

REPLACEMENT LANDSCAPING SCHEME ALONG EAST POW BURN

THE TELECOMMUNICATION DUCTS ARE TO BE PROTECTED OR DIVERTED DURING THE OPERATIONS.

THE UNDERGROUND POWER CABLES ARE TO BE PROTECTED OR DIVERTED DURING THE OPERATIONS.

THE OVERHEAD POWER LINES ARE TO BE PROTECTED OR DIVERTED DURING THE OPERATIONS.

THE WATER MAINS ARE TO BE PROTECTED OR DIVERTED DURING THE OPERATIONS.

CONTINUED ON DRG No 716516/AFO/214

CONTINUED ON DRG No 716516/AFO/216

Reproduced by permission of Ordnance Survey on behalf of Her Majesty's Stationery Office. (c) Crown copyright and database right 2013. All rights reserved. 100016971.

SCALE 1:200

