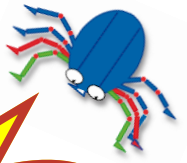
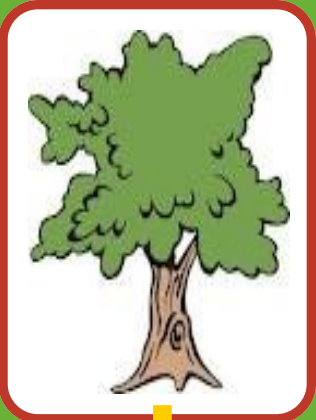


WEB Walk Quiz...



We hope you enjoyed your visit to the WEB Walk. Here is a quick quiz to test your knowledge and listening skills! You can answer the questions on your own, or get together with your classmates and answer them as a group.

Every day we all use natural resources! Where does it all come from? Can you think of some of the important products we get from these raw materials?



Blank lined area for writing answers to the oil pumpjack question.

Blank lined area for writing answers to the metal question.

Blank lined area for writing answers to the tree question.

Blank lined area for writing answers to the beach question.

Draw a line to match the word to the right meaning:

REUSE

LANDFILL

REDUCE

RECYCLE

Not making as much waste in the first place!

Using an item again without making it into a new product first

Using waste to make new products

A big hole in the ground where waste that hasn't been recycled is sent

THE WASTE HIERARCHY!

The Waste Hierarchy:

Can you now put these 4 words into the most environmentally friendly order? Starting with the best thing you can do to make less waste and save natural resources:

1.

2.

3.

4.

Can you list the kinds of materials that we should be putting into our recycling wheellie bins?





Word Search:

- Recycle
- Resources
- Paper
- Reuse
- Cardboard
- Glass
- Plastic
- Composting
- Bottle
- Reduce

R	A	C	P	A	P	E	R	D	U
E	E	G	A	B	L	C	E	C	D
C	Q	S	B	N	T	U	U	K	R
Y	C	F	O	G	S	D	S	R	A
C	P	W	T	U	J	E	E	G	O
L	V	E	T	B	R	R	M	L	B
E	R	Y	L	I	S	C	O	A	D
H	S	Q	E	R	N	X	E	S	R
R	P	L	A	S	T	I	C	S	A
G	N	I	T	S	O	P	M	O	C

Answers: Natural Resources: Crude Oil = plastic, polyester clothing, Vaseline, petroleum, diesel, pesticides, nylon; Metals = cans, appliances, bicycles, computers, car parts, aeroplanes, tools, cooking equipment; Trees = building materials, firewood, paper, cardboard, oxygen, fruit, vegetables, medicines, rubber, honey, animals; Sand = glass bottles and jars, bowls, pottery, window panes, ornaments, fibreglass, plaster, bricks; **Match the words:** check with your teacher. **Waste Hierarchy** = Reduce, Reuse, Recycle, Landfill. **Brown bin** = leaves, twigs, grass clippings, flowers, vegetarian pet bedding, all types of food waste; **Blue bin** = rigid plastic packaging, food and drink cans, biscuit and sweet tins, aerosol cans, paper, cardboard, magazines, catalogues. **Word Search:** compare with your classmates.