

Loch of the Lowes Path



Distance: 7.5 km (4¾ ml)

Approx time: 2½ hrs

Start & finish: Dunkeld or Cally Car Park (avoiding steep uphill to Craig Wood)

A lovely walk through coniferous and deciduous woodland and open pasture, on the way to Loch of the Lowes. Use the hides at the Scottish Wildlife Trust's visitor centre to sneak a peek in season at overwintering geese, ducks including goldeneye and the striking, head shaking courtship of the great crested grebe. A camera provides live and recorded images of the famous osprey nest in season and other local wildlife.

Take care as the path crosses the busy A923, before passing through Dunkeld Golf Course. Further on, next to Fungarth and Haughend, the path follows part of the public highways of old, once the main route from Dunkeld to Loch of the Lowes. Fleeting flashes of red and black belong to the male redstarts often spotted around Newtyle Hill during summer months.

Atholl Woods Path



Distance: 11 km (7 ml)

Approx time: 3½ hrs

Start & finish: Cally Car Park

One of the area's longer paths begins in coniferous woodland before descending to Polney Loch – pike pool – at the base of the imposing cliffs of Craig a' Barns and Lovers' Leap. Legend has the 3rd Duke of Atholl planting the crags with European larch by firing cones and seed from cannon. In spring and summer, blue damselflies flit around the loch often accompanied by the beautifully iridescent emerald variety, and breeding coots may be glimpsed as they dive.

As the path heads uphill, look out for signs of fallow deer in Atholl Woods. Variable in colour, the mature males have spectacular shovel-shaped antlers.

The summit provides fantastic views across the Tay valley and up to the highlands of Pitlochry, the green woodpecker's yaffling call providing an interesting soundtrack. After Rotmell Wood, the moorland path leads to Mill Dam, home to a variety of wildfowl at most times of year.

Birnam Hill Path



Distance: 7 km (4¼ ml)

Approx time: 2¼ hrs

Start & finish: Birnam or Quarry Car Park on Bankfoot Road

A strenuous hill walk to a summit of over 365 m (1200 ft) with views that make the climb well worth the effort.

The route takes you past the old, slate quarries of Birnam, up a steadier incline through trees to Stair Bridge, a folly, with a breathtaking view looking south-east towards Perth – a short detour off the main path and a great spot to stop for a rest.

Crossing open heather moorland, listen out for ravens 'cronking' overhead. The lucky few may spot black grouse feeding on blaeberrys and pine needles around Kings' Seat at the summit.

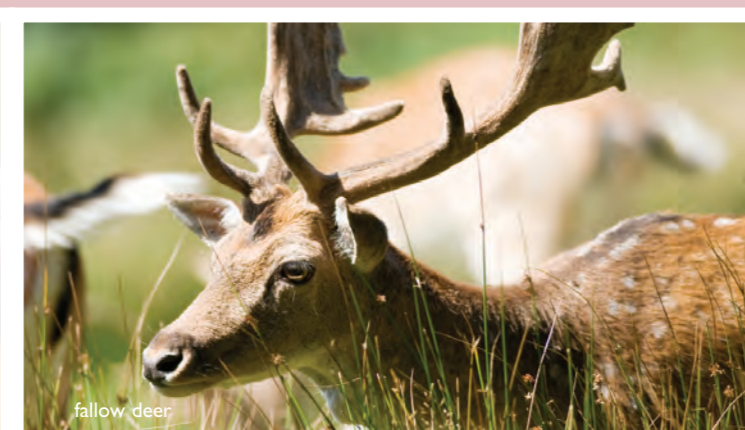
Remember to stop and admire the view across Birnam and Dunkeld from halfway down the steep descent, before entering the tree cover to follow the Inchewan Burn back to the start.



musicians.
landscape has inspired writers, artists and Shakespearean connection and its stunning most impressive trees. The area boasts a Country, Dunkeld hosts some of Scotland's crags within a natural amphitheatre formed by surrounding hills. As part of Big Tree and Birnam, explore the rivers, woods and Beginning in the historic villages of Dunkeld constraints and levels of fitness.
range of habitats and scenery, and can be adjusted to suit individual interests, time Most paths can be linked to reveal a wide Ordie and beyond.
and the area from Cally Car Park to Loch should check out tracks in Craigvinean Forest great for all abilities. Keen mountain bikers Bishop's Path and part of Birnam Path are

horse-riding.
routes for walking, cycling and tracks forming a range of circular Network – over 70 km (44 ml) of Discover the Dunkeld Path

With wildlife in abundance, the area provides a home to one of the nation's best loved mammals, the red squirrel, along with a variety of birds from osprey to black grouse.



Fiddler's & Bishops Path



Distance: Fiddler's Path – 9 km (5½ ml)
Bishops Path – 2.5 km (1½ ml)

Approx time: Fiddler's Path – 2¾ hrs
Bishops Path – ¾ hrs

Start & finish: Dunkeld North Car Park or cathedral entrance

Both routes begin on the same path, past the cathedral and along the banks of the Tay towards Dunkeld House Hotel.

Just before the hotel, Bishops Path curves round to a short, steep uphill section of the drive before a gradual ascent through spectacularly large trees.

The circular route is suitable for most abilities, skirting the base of Stanley Hill – originally Shiochie's Hill meaning Hill of the Faeries – and past some impressive monkey puzzle trees. At the back of the cathedral read the fascinating story of the Parent Larch, 'mother of millions'.

The Fiddler's Path continues along the river bank past a stand of shimmering silver birch, where roe deer are easily seen. After crossing the Tay at Jubilee Bridge, discover Niel Gow's Oak, the spot where the famous fiddler was inspired to compose many tunes.

Salmon rise in the river, with goosanders, herons and the less common white-bibbed dipper often spotted along its length.



Inchewan Path



Distance: 8 km (5 ml)

Approx time: 2½ hrs

Start & finish: Birnam

One of the most varied paths in the network, the road hugs the Beatrix Potter Garden and follows the banks of the picturesque Inchewan Burn into the woodland of Birnam Glen.

Look out for the white-bibbed dipper as it dives into the fast flowing water in search of insects. This interesting little bird is known as the 'water bobby' as it bobs up and down whilst perching on rocks and boulders in the stream.

Cross the Inchewan Burn into Ladywell Plantation, where open clearings allow attractive views of the surrounding hills and straths.

After the path passes through the birch of Tomgarrow Wood it opens out into the rough pasture of Balhomish.

Listen for the plaintive calls of the curlew as they soar over the moors displaying their long curved bill.

The path turns off the forestry track just before Balhomish Farm, crossing fields, before returning to Birnam Glen.

SCOTTISH OUTDOOR ACCESS CODE

Know the Code before you go...

Everyone has the right to be on most land and inland water providing they act responsibly. Your access rights and responsibilities are explained fully in the Scottish Outdoor Access Code.

Whether you're in the outdoors or managing the outdoors, the key things are to:

- take responsibility for your own actions
- respect the interests of other people
- care for the environment

Find out more by visiting www.outdooraccess-scotland.com or contacting your local Scottish Natural Heritage office.

If you or someone you know would like a copy of this document in another language or format, (on occasion, only a summary of the document will be provided in translation), this can be arranged by contacting Community Greenspace on 01738 475258.

Perth & Kinross Council and several private and public landowners own and manage the Dunkeld Path Network. Dunkeld & Birnam is one of six cluster areas included in the Perthshire Big Tree Country Heritage and Access project, celebrating the amazing woodland heritage in the area, and co-ordinated by Perth and Kinross Countryside Trust.

Big Tree Country sites in this cluster area:

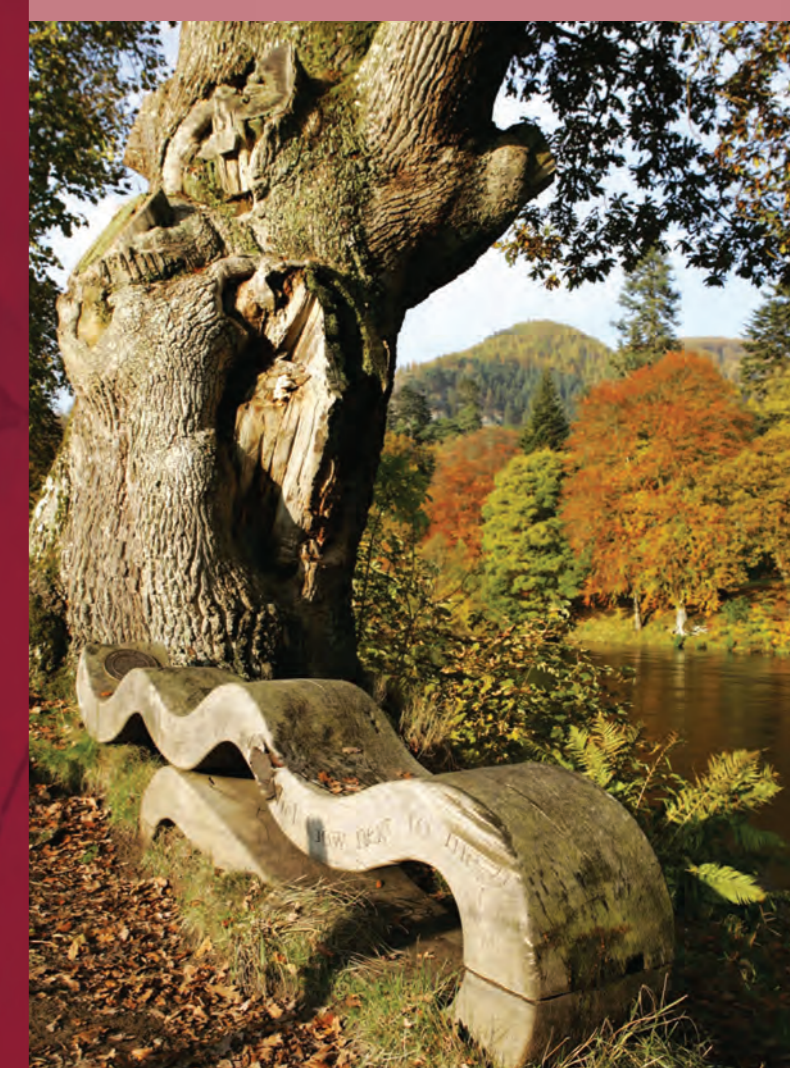
- Birnam Heritage Trees
- Dunkeld House Hotel grounds
- The Hermitage
- Loch of the Lowes
- Loch Ordie Trails
- Pinecone Point & Craigvinean Forest
- Stanley Hill

www.perthshirebigtreecountry.co.uk

Cover image: Niel Gow's Oak © Perthshire Picture Agency



Explore
Dunkeld Path Network



Contact Perth and Kinross Council Ranger Service on 01738 475000



Loch Ordie Path

●●●●●●
Distance: 19 km (12 ml)
Approx time: 6 hrs
Start & finish: Cally Car Park

With a gentle uphill gradient, this path offers amazing views of plantations and the hills at the 'entrance to the highlands'. Listen out for jays as they fly along the woodland edge at the start of your journey.

As the path opens onto the hillside, watch out for fallow deer and the mute swans at Mill Dam – a perfect place to rest on one of the sculptured seats. Further along the track are the fishing lochs of Rotmell and Dowally, be sure to keep to the track on the right as you pass Raor Lodge.

On the left the hillsides are dotted with lone pines, and black grouse often provide an early morning soundtrack. They're not the only interesting birds around these parts – osprey, merlin, short-eared owls and hen harriers all frequent the area at different times of year so have your binoculars ready!



black grouse

Braan Path

●●●●●●
Distance: 6 km (3¾ ml)
Approx time: 2 hrs
Start & finish: Inver or the Hermitage Car Park

Walk among the giant Douglas firs in the sheltered woods along the banks of the River Braan, to Ossian's Hall and pause at the bridge over the impressive falls – a great place to watch salmon jumping in autumn.

Continue upstream to the upper falls and Ossian's Cave. Meandering through the trees to Craigveinan, the path emerges in fields, before reaching the road to Rumbling Bridge. The bridge crosses a deep chasm, where the river falls roaring and rumbling down into the gorge – a spectacular sight especially in winter.

After leaving the woods, the path crosses the open heathland around Tomgarrow and Balhomish. From the peace of the open moor, enter the quiet of the birch wood leading to the plantation at Ladywell.

Inver Path

●●●●●●
Distance: 8 km (5 ml)
Approx time: 2½ hrs
Start & finish: The Hermitage and Newton Craig Car Park

Enjoy the splendour of the stately trees along the banks of the River Braan before turning right just before Ossian's Hall, towards Craigveinan Forest. A mature commercial forest, it offers a rich array of ferns and mosses and cascading burns among the towering pine, fir and larch.

To the left of the main track, a most abilities path heads uphill to Pinecone Point. The breathtaking view looks over tree filled valleys, rocky crags and the silver ribbon of the Tay.

On the right, 50 m past the path to Pinecone Point, a stone folly nestles among the heather and pine.

The Inver Path continues through Craigveinan – watch out for red squirrels hiding in the boughs, especially as the path narrows through the trees. Passing through a tunnel under the A9, follow the bank of the Tay back to Dunkeld and the village of Inver before returning to the Hermitage.

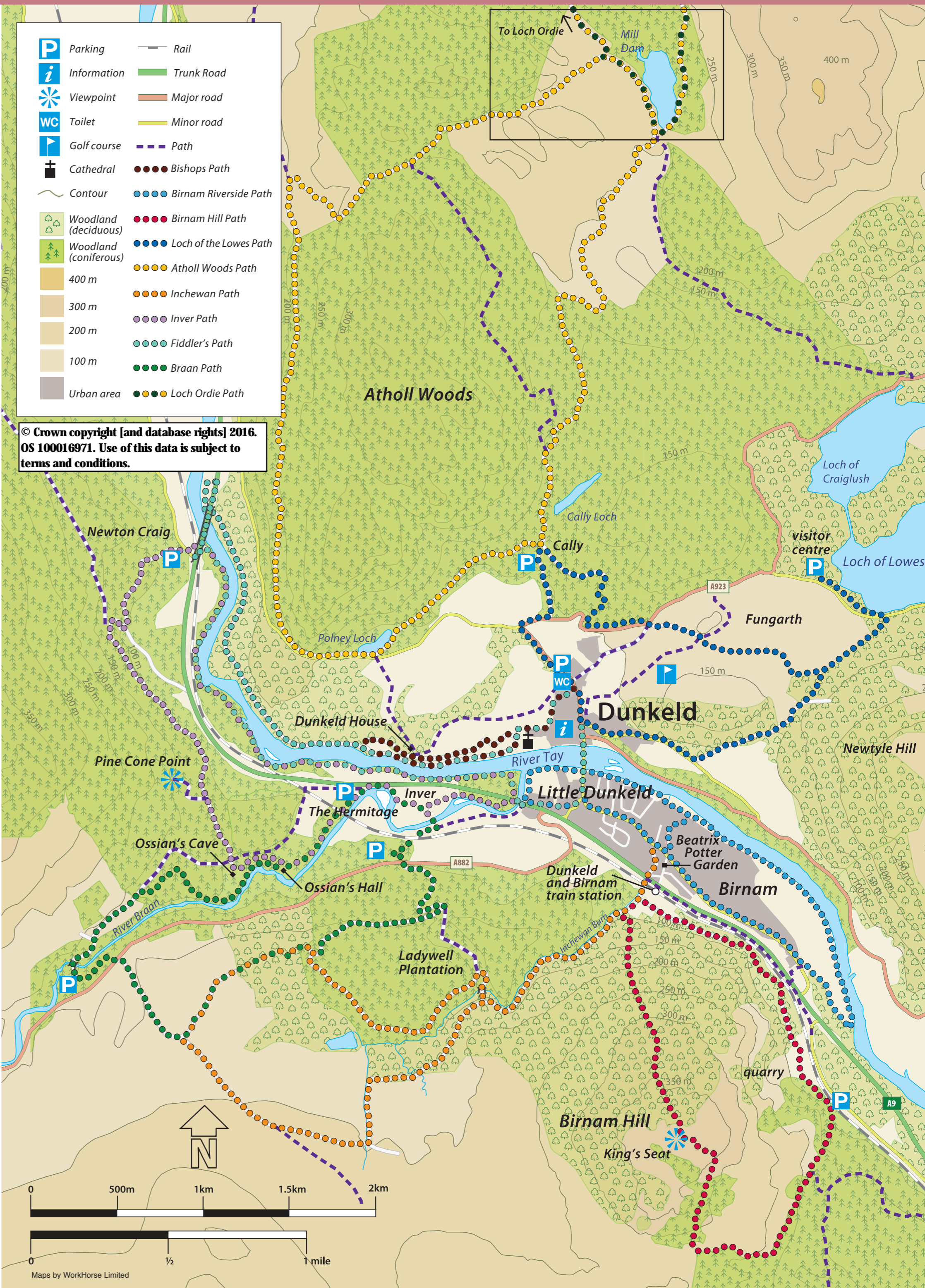
Birnam Riverside Path

●●●●●●
Distance: 5.5 km (3½ ml)
Approx time: 1¼ hrs
Start & finish: Birnam

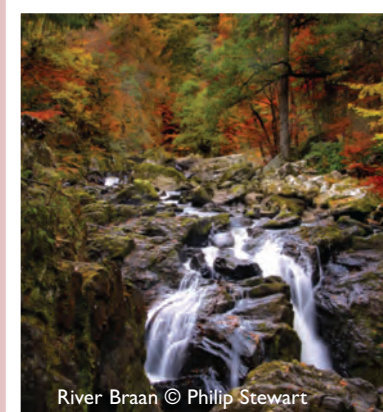
A peaceful, ambling path, suitable for most abilities, with benches dotted along the riverbank. The young Beatrix Potter was inspired to write her famous children's stories after a childhood summer holiday in a house on the other side of the water.

Down by the river, old and venerable trees include the Birnam Oak, the sole survivor of the Birnam Wood featured in Shakespeare's *Macbeth*. Upstream, the path dips under Dunkeld Bridge, completed in 1808 to the design of Scottish engineer Thomas Telford. Steps at the bridge toll house give access into Dunkeld.

Beyond the bridge, Dunkeld and its imposing cathedral are visible on the opposite bank. Keep your eyes and ears open for the shimmering flash of turquoise and thin 'pip' call of the kingfisher often spotted along the river.



© Crown copyright [and database rights] 2016. OS 100016971. Use of this data is subject to terms and conditions.



River Braan © Philip Stewart



Ossian's Hall



Pinecone Point in Craigveinan



Telford's bridge spans the Tay at Dunkeld