



PERTH & KINROSS COUNCIL

EDUCATION AND CHILDREN'S SERVICES

PROPOSAL PAPER

PROPOSAL TO ESTABLISH A NEW SECONDARY SCHOOL ON A PREFERRED SITE AT BERTHA PARK, PERTH AND ASSOCIATED PROPOSALS TO ESTABLISH A CATCHMENT AREA FOR THE SCHOOL AND THE TRANSFER ARRANGEMENTS FOR PRIMARY PUPILS

This document has been issued by Perth & Kinross Council for proposal in terms of The Schools (Consultation) (Scotland) Act 2010.

Any Ordnance Survey map data included within this document is provided by Perth & Kinross Council under licence from Ordnance Survey in order to fulfil its public function in relation to this public proposal. Persons viewing this mapping should contact Ordnance Survey Copyright for advice where they wish to licence Ordnance Survey mapping data for their own use.

CONTENTS

Section		Page
	Affected Schools	3
	Distribution	4
	Consultation with Children and Young People	4
	Summary of Process for the Proposal Document	5
	Public Meetings	7
	Proposal	8
1	Statutory Responsibilities	8
2	Vision	8
3	Background	9
4	Options Considered and Option for Consultation from	10
	Options Appraisal	
5	Preferred Option	11
6	Bertha Park and the Local Area	12
7	Current School Information	14
8	Present Catchment Area Arrangements	16
9	Existing Transfer Arrangements between Primary Schools	17
	and Secondary Schools	
10	Existing School Transport Arrangements	18
11	The New Secondary School	18
12	New Catchment Area Proposals	19
13	New Transfer Arrangements between Primary Schools	21
	and Secondary Schools	
14	Transition Arrangements between 2017/2018 and	21
	2022/2023	
15	Transition Arrangements	22
16	Timescale	23
17	New School Transport Arrangements	24
18	Likely Effect Caused by Different Travelling Arrangements	25
19	Educational Benefits Statement	25
20	Leadership Arrangements	30
21	Implications for Staff	30
22	Likely Effect on the Local Community	30
23	Sustainability	31
24	Equal Opportunities	31
25	Conclusion	32
26	Responding to the Proposal	32
27	Recommendations	33
Appendices		
Appendix 1	Historical Secondary School Rolls and Projected	35
	Secondary School Rolls if Perth & Kinross Council does	
	nothing	
Appendix 2	Map of Proposed New Secondary School Catchment Area	36
Appendix 3	Designated Secondary Schools	37
Appendix 4	Key Consultation Dates	41
Appendix 5	Consultation Response Form	42

AFFECTED SCHOOLS

The following schools are directly affected by this proposal document:

- **Auchtergaven Primary School**
- **Dunbarney Primary School**
- **Forgandenny Primary School**
- **Forteviot Primary School**
- **Logiealmond Primary School**
- **Methven Primary School**
- **Oudenarde Pupils attending Inch View Primary School**
- **Perth Academy**
- **Perth Grammar School**
- **Perth High School**
- **Pitcairn Primary School**
- **Ruthvenfield Primary School**

The following schools are indirectly affected by this proposal document:

- **Abernethy Primary School**
- **Abernyte Primary School**
- **Balbeggie Primary School**
- **Balhousie Primary School**
- **Burrelton Primary School**
- **Collace Primary School**
- **Craigie Primary School**
- **Errol Primary School**
- **Goodlyburn Primary School**
- **Glendelvine Primary School**
- **Guildtown Primary School**
- **Inch View Primary School**
- **Inchture Primary School**
- **Invergowrie Primary School**
- **Kinnoull Primary School**
- **Letham Primary School**
- **Longforgan Primary School**
- **Luncarty Primary School**
- **Moncreiffe Primary School**
- **Murthly Primary School**
- **North Muirton Primary School**
- **Oakbank Primary School**
- **Robert Douglas Memorial Primary School**
- **Royal School of Dunkeld Primary School**
- **St Madoes Primary School**
- **St Ninian's Primary School**
- **Stanley Primary School**
- **Tulloch Primary School**
- **Viewlands Primary School**

DISTRIBUTION

A copy of this document is available on the Perth & Kinross Council website: www.pkc.gov.uk

A link to an electronic version of this document will be provided by letter to:

- The Parent Councils (if any) of all the affected schools
- The parents of the pupils and children who may attend any of the affected schools
- Parents of children expected to attend any of the affected schools within 2 years of the date of publication of this proposal document
- The teaching and ancillary staff at all of the affected schools
- The trade union and professional association representatives of the above staff
- The Community Councils
- Relevant users of all the affected schools
- Elected Members of Perth & Kinross Council
- Lay Members of Lifelong Learning Committee
- The Constituency MSPs and List MSPs covering the Constituency
- The Constituency MPs
- The Executive Director, The Environment Service, Perth & Kinross Council
- The Executive Director, Housing & Community Care, Perth & Kinross Council
- Tayside Contracts
- Live Active Leisure
- Education Scotland

A copy of this document is also available from:

- Education and Children's Services, Pullar House, 35 Kinnoull Street, Perth, PH1 5GD
- Council Headquarters, 2 High Street, Perth
- AK Bell Library, Perth
- Local area offices in the vicinity of the schools affected
- All the affected schools listed on Page 3

This document is available in alternative formats or in translated form for readers whose first language is not English. Please apply to Education and Children's Services, Pullar House, 35 Kinnoull Street, Perth, PH1 5GD by telephone on 01738 476200; or by e-mail: ECSGeneralEnquiries@pkc.gov.uk

CONSULTATION WITH CHILDREN AND YOUNG PEOPLE

Pupils will be consulted about the proposal in school in accordance with the Children's Commissioner Guidance and further information about this will be provided to parents/carers.

SUMMARY OF PROCESS FOR THIS PROPOSAL DOCUMENT

1. Consideration by the Lifelong Learning Committee

This proposal document has been issued as a result of decisions taken by the Council on 7 May 2014 (Report No [14/193](#) refers) and on 25 June 2014 of the Lifelong Learning Committee of Perth & Kinross Council (Report No [14/298](#) refers). This is to seek views on the proposals in this paper.

2. Proposal document and supporting Information issued to consultees and published on the Council website

A copy of this document will be made available free of charge to the consultees listed on the preceding page, and it will also be published on the Council website: www.pkc.gov.uk

3. Publication of advertisement in local newspapers

An advertisement will be placed in local newspapers relevant to the affected areas. In addition, there may be announcements related to the Proposal process on the local radio station, Radio Tay.

4. Length of consultation period

An advertisement will be placed in local newspapers on 11 and 12 September 2014. The consultation will thereafter run until close of business on 19 November 2014, which includes a period of 37 school days.

5. Public meetings

A number of public meetings will be held, the details of which are given on pages 7 and 8 of this document.

6. Involvement of Education Scotland

When the proposal document is published, a copy will also be sent to Education Scotland by the Education Authority. Education Scotland will also receive a copy of any relevant written representations received by the Authority from any person during the consultation period or, if Education Scotland agree, a summary of them. Education Scotland will further receive a summary of any oral representations made to the Authority at the public meeting which will be held and, as available (and so far as otherwise practicable), a copy of any other relevant documentation.

Education Scotland will then prepare a report on the educational aspects of the proposal not later than 3 weeks after the Authority has sent them all representations and documents mentioned above. For the avoidance of doubt, the 3 week period will not start until after the consultation period has ended. In preparing their report, Education Scotland may enter the affected schools and make such reasonable enquiries of such people there as they consider appropriate, and may make such reasonable enquiries of such other people as they consider appropriate.

7. Preparation of consultation report

The Education Authority will review the proposal having regard to the Education Scotland Report, written representations that it has received and oral representations made to it, by any person at the public meetings.

It will then prepare a consultation report. This report will be published in electronic and printed formats and will be advertised in local newspapers. It will be available on the Council website and from Education & Children's Services at Pullar House, 35 Kinnoull Street, Perth & Kinross Council Headquarters at 2 High Street, AK Bell Library, local area offices in the vicinity of the affected schools as well as all the affected schools, free of charge. Anyone who made written representations to the Authority during the consultation period will also be informed about the report.

The report will include:

- a record of the total number of written representations made to the Authority during the consultation period;
- a summary of the written representations;
- a summary of the oral representations made at the public meeting;
- the Authority's response to the Education Scotland Report as well as any written or oral representations it has received, together with a copy of the Education Scotland Report and any other relevant information, including details of any alleged inaccuracies and how these have been handled; and
- a statement explaining how the Authority complied with the requirement to review the proposal in light of the Education Scotland Report and representations (both written and oral) that it received.

The consultation report will be published and available for further consideration for a period of 6 weeks.

8. Decision

This report, together with any other relevant documentation, will be considered by the Lifelong Learning Committee of Perth & Kinross Council, who will take forward a final proposal no earlier than May 2015.

9. Note on corrections

If any inaccuracy or omission is discovered in this proposal document, either by the Council or any person, the Council must investigate and decide what, if any, action is required. If relevant information has been omitted or there has been an inaccuracy, the Council will then take appropriate action which may include the issue of a correction notice, the publishing of a corrected proposal paper or the revision of the timescale for the consultation period if appropriate. In that event, relevant consultees and Education Scotland will be advised. The Authority must inform the person who made the allegation and what action it has taken.

10. Note

This consultation is being conducted having regard to the terms of the Schools (Consultation) (Scotland) Act 2010.

PUBLIC MEETINGS

A number of public meetings will be held to discuss these proposals. Anyone wishing to attend one of the public meetings is invited to do so. The meetings, which will be convened by the Education Authority, will be addressed by the Executive Director (Education and Children's Services), or other senior officers of the Council.

The meetings will be an opportunity for interested parties to:

- Hear more about the proposal
- Ask questions about the proposal
- Have their views recorded so that they can be taken into account as part of the consultation process.

The public meetings are as follows and are proposed to take place weeks commencing 22 and 29 September 2014:

Venue: Bankfoot Church Centre, Tulliebelton Road, Bankfoot, PH1 4BS
Date: Monday 22 September 2014
Time: 7.00 pm

Venue: Pitcairngreen Village Hall, Pitcairngreen, PH1 3 LR
Date: Tuesday 23 September 2014
Time: 7.00 pm

Venue: Methven Church Hall, Retinue Row, Methven, PH1 3PF
Date: Wednesday 24 September 2014
Time: 7.00 pm

Venue: AK Bell Library, York Place, Perth, PH2 8EP
Date: Thursday 25 September 2014
Time: 7.00 pm

Venue: Bridge of Earn Institute, Station Road, Bridge of Earn, PH2 9EA
Date: Monday 29 September 2014
Time: 7.00 pm

Venue: Perth Grammar School, Gowans Terrace, Perth, PH1 5AZ
Date: Tuesday 30 September 2014
Time: 7.00 pm

Venue: Perth High School, Oakbank Road, Perth, PH1 1HB
Date: Wednesday 1 October 2014
Time: 7.00 pm

Venue: Perth Academy, Murray Place, Perth, PH1 1NJ
Date: Thursday 2 October 2014
Time: 7.00 pm

A note will be taken at the meetings of questions and views. This note will be published on the Council website, and a printed copy will be made available upon request.

**PERTH & KINROSS COUNCIL
EDUCATION AND CHILDREN'S SERVICES**

THIS IS A PROPOSAL DOCUMENT

Proposal:

That subject to the outcome of this proposal exercise, the Council proposes to:

- establish a new secondary school on a preferred site at Bertha Park, Perth with effect from March 2018;
- vary the existing admission arrangements to alter the catchment areas serving Perth Grammar School, Perth High School and Perth Academy to establish a catchment area for the proposed new secondary school, and establish temporary admission arrangements to accommodate the phased population of the new secondary school; and
- vary the arrangements for the transfer of pupils from a primary school to a secondary school by altering the designated secondary school for the directly affected primary schools, and establish temporary transfer arrangements to accommodate the phased population of the new secondary school.

1. STATUTORY RESPONSIBILITIES

- 1.1 Councils have a statutory duty in terms of the Education (Scotland) Act 1980 to make adequate and efficient provision of school education across their entire area for the current school population and future pattern of demand. The Council's School Estate Management Plan, approved by the Lifelong Learning Committee of Perth & Kinross Council on 6 March 2014, (Report No [14/96](#) refers) provides information on the whole of the school estate and provides information about overall objectives and future priorities within Perth & Kinross Council.
- 1.2 Councils also have a statutory responsibility in terms of the Local Government in Scotland Act 2003 to achieve best value. To achieve best value and optimum efficiency, the organisation of the school estate is therefore kept under regular review, including the need for school provision and other factors, such as altering catchment areas.

2. VISION

- 2.1 Perth & Kinross Council works to enhance quality of life, make best use of public resources and ensure continuously improving services. Perth & Kinross Council's Corporate Plan "Securing the Future" aims to ensure that individuals, families and communities experience the best possible outcomes from a range of services.

Perth & Kinross Council has a strong identity and clear priorities which everyone works together to achieve, creating areas which are vibrant and successful; safe, secure, healthy and sustainable environments; educated, responsible and informed citizens; confident and active communities; and places where people are nurtured and supported, giving every child the best start in life.

- 2.2 This approach is reflected in the Scottish Government National Performance Framework - National Outcome 15 states that “Our public services are high quality, continually improving, efficient and responsive to local people’s needs”, and the Local Outcome states that “Our services will be responsive, of high quality and continually improving”. This report also links with Perth & Kinross Council’s School Estate Management Plan, Education and Children’s Services Policy Framework Maximising Resources and with the Education and Children’s Services objective to develop the range and quality learning experiences for all.

3. BACKGROUND

- 3.1 Perth & Kinross is one of the fastest growing areas of Scotland based on latest population projections¹ indicating a 24% growth over a 25 year period. There are a number of major strategic housing sites as well as existing planning applications included in the current Local Development Plan (LDP), which runs until 2024. These sites include: Bertha Park, Almond Valley and Perth West to the North and West of Perth (5,050 houses); Scone North (700 houses); and Oudenarde near Bridge of Earn (1,600 houses).
- 3.2 A major review of the school estate was carried out in 2012 to determine the likely impact of population growth on primary and secondary education within the area. A new secondary school for Perth City was identified as one of the key priorities.
- 3.3 Perth City currently has three non-denominational secondary schools: Perth Academy; Perth Grammar School; and Perth High School. Together they have capacity for 3,946 pupils.
- 3.4 Projections based on existing pupil numbers, ie those already within our primary and secondary schools, suggest that our Perth City secondary schools will be near to capacity in 2021. In particular, Perth High School is projected to be at capacity in 2017/2018. Table 1 below highlights an approximate 10% increase in secondary population from 2014/2015 to 2020/2021, **excluding** the impact of house building.

Table 1 – Projected Secondary Rolls – Perth City School (excluding St John’s Academy)

School Name	Capacity	2014/ 2015	2015/ 2016	2016/ 2017	2017/ 2018	2018/ 2019	2019/ 2020	2020/ 2021
Perth Academy	1,218	998	996	990	996	993	998	1,041
Perth Grammar School	1,182	997	989	1,013	1,034	1,033	1,034	1,053
Perth High School	1,546	1,450	1,477	1,505	1,552	1,575	1,664	1,710
Total	3,946	3,445	3,462	3,508	3,582	3,601	3,695	3,804

¹ 2012 based, published May 2014, National Records of Scotland

- 3.5 Historical and projected pupil rolls are shown in Appendix 1.
- 3.6 In addition to projected pupil numbers, the impact of house building detailed in Section 3.1 on the secondary school population must be considered. The following table (Table 2) gives an indication of the potential impact of population growth and house building on Perth City schools. The table shows that if 50% of the planned housing, from sites identified in the Local Development Plan (LDP) and if those that have been received as a planning application were to be built, the Perth City secondary schools would be over capacity by 758 pupils.

Table 2 - Potential impact of population growth and house building on current Perth City secondary school capacities

School	Planned No. of houses in LDP and existing planning applications	Estimated No. of pupils if 50% houses built	Highest Projected Roll (HPR) to 2020/2021	HPR to 2020/2021 and estimated new pupils from 50% build out	Current capacity of school	Estimated pupil Nos over capacity
Perth Academy	3,000	225	1,041	1,266	1,218	48
Perth Grammar School	6,930	519	1,053	1,572	1,182	390
Perth High School	2,070	156	1,710	1,866	1,546	320
TOTAL	12,000	900	3,804	4,704	3,946	758

- 3.7 As a result, a new secondary school is required to meet the anticipated demand for secondary school places in Perth. If Perth & Kinross Council does nothing, the schools listed above will breach capacity.
- 3.8 In July 2012, the Council bid successfully for £15.333m of funding towards the proposed new secondary school from the Scottish Government. Additional funding of £7.667m was approved by Council on 19 December 2012 (Report No [12/586](#) refers). A condition of the funding is that the new school will be complete and operational no later than 31 March 2018.

4. OPTIONS CONSIDERED AND OPTION FOR CONSULTATION FROM OPTIONS APPRAISAL

The following options were considered by the Council on 7 May 2014 (Report No [14/193](#) refers):

- 4.1 Option 1: New secondary school at Bertha Park, Perth for 2018 (Capacity for 1,100 pupils including places for pupils with additional support needs.)
- 1a) A catchment area primarily for the new Local Development Plan (LDP) housing at Bertha Park, Almond Valley and Perth West, and

pupils within walking/cycling distance in Pitcairn and Ruthvenfield primary school catchments;

- 1b) A catchment area for the new LDP housing at Bertha Park, Almond Valley and Perth West, and pupils within walking/cycling distance in Pitcairn and Ruthvenfield and also the Carse of Gowrie primary catchments including: Errol, Inchtute, St Madoes, Abernyte, Invergowrie and Longforgan. The Carse primaries currently feed to Perth High School;
 - 1c) A catchment area for the new LDP housing at Bertha Park, Almond Valley and Perth West, and pupils within walking/cycling distance in Pitcairn and Ruthvenfield and the 'A9 corridor' primary catchments including: Luncarty, Stanley, Murthly, Auchtergaven together with Methven and Logiealmond. These catchments currently feed to Perth Grammar School;
 - 1d) A catchment area for the new LDP housing at Bertha Park, Almond Valley and Perth West, and pupils within walking/cycling distance in Pitcairn and Ruthvenfield and the 'A9 corridor' primary catchments including: Luncarty, Stanley, Murthly, Auchtergaven. This option excludes Methven and Logiealmond;
 - 1e) A catchment area for the new LDP housing at Bertha Park, Almond Valley and Perth West, and pupils within walking/cycling distance in Pitcairn and Ruthvenfield and North West Perth catchments including: Auchtergaven, Methven and Logiealmond. This option excludes Perth Grammar School associated primary schools, where the population (and school) is currently to the East of the A9; and
 - 1f) A catchment area for the new LDP housing at Bertha Park, Almond Valley and Perth West, and pupils within walking/cycling distance in Pitcairn and Ruthvenfield and North West Perth catchments including: Auchtergaven, Methven and Logiealmond. This option also includes Oudenarde (Perth Academy) and Dunbarney, Forteviot and Forgandenny (Perth High School).
- 4.2 Option 2: Proceed with a new secondary school at Bertha Park, Perth at a future date (Capacity for 1,100 pupils including places for pupils with additional support needs.)

5. PREFERRED OPTION

- 5.1 Option 1 explores different catchment alternatives which may have an impact on current secondary school rolls, and may also impact on children and families in respect of convenience and travel plans. The catchment alternatives intend, as far as possible, to minimise the level of change for pupils and families and maintain existing community ties.

5.2 The options were evaluated against the following criteria using the weighting factors which are based on Audit Scotland and CIPFA guidance:

- Supports a positive educational and social environment in Perth City schools;
- Reconfigures the pupil population in Perth City schools;
- Cost effectiveness;
- Maintains social/historical/geographical links;
- Minimises travel time for pupils/supports walking and cycling to school/improves traffic management and air quality in Perth City; and
- Provides sufficient capacity for Bertha Park and Almond Valley and Perth West pupils in the new school.

5.3 On the basis of ranking the options against the criteria, the Council approved **Option 1f** as the preferred option on 7 May 2014 (Report No [14/193](#) refers).

Option 1f proposes including the primary school catchment areas of: Auchtergaven, Dunbarney, Forgandenny, Forteviot, Logiealmond, Methven, Pitcairn, Ruthvenfield. Also, included is the catchment area of Oudenarde together with the new Local Development Plan site areas of Bertha Park, Almond Valley and Perth West.

Option 1f provides capacity for secondary pupils from the new Local Development Plan site areas of Bertha Park, Almond Valley and Perth West, alleviates future pressure on Perth Grammar School, alleviates future pressure on Perth High School and allows Dunbarney and Oudenarde pupils to attend the same secondary school.

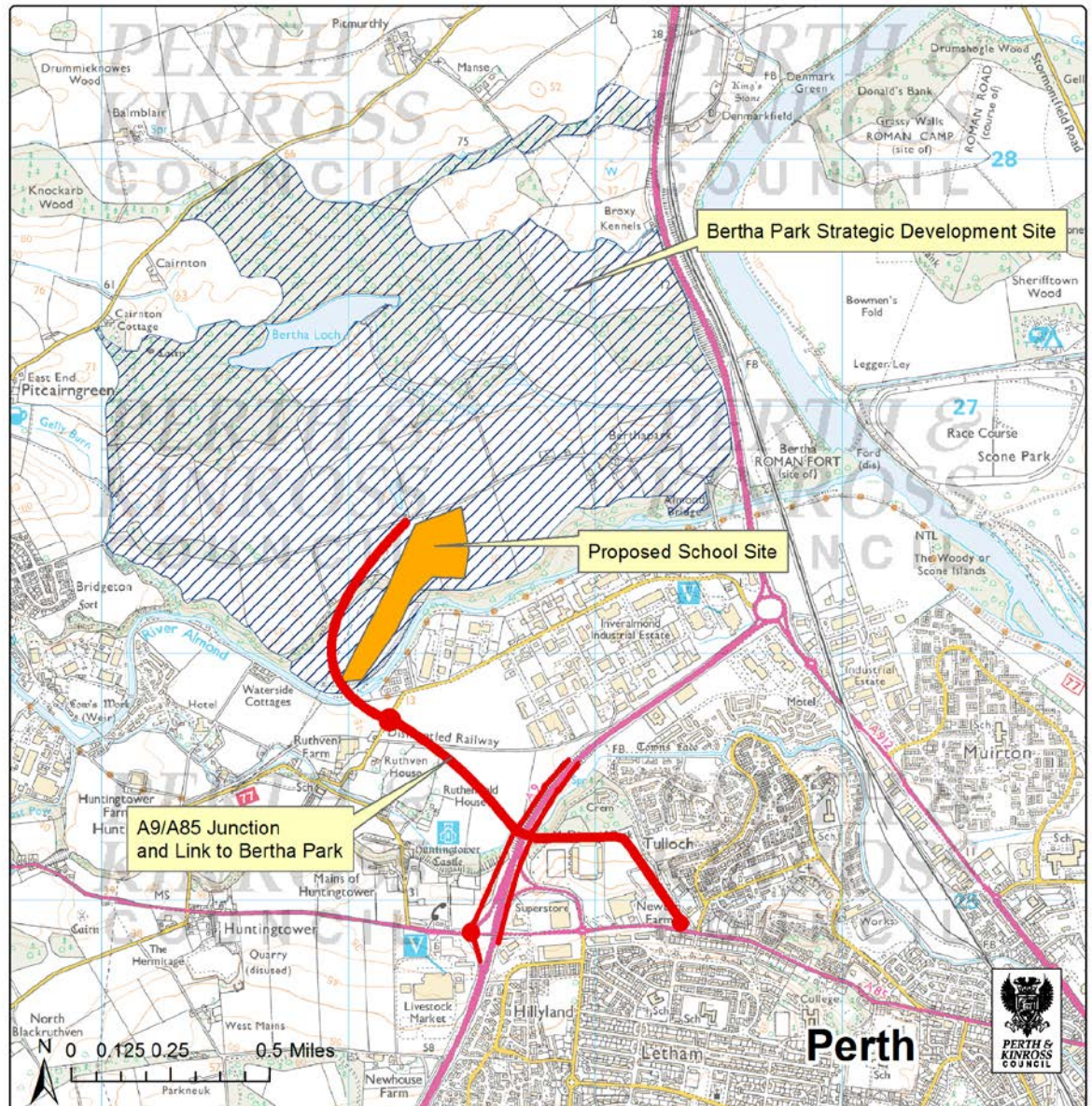
6. BERTHA PARK AND THE LOCAL AREA

6.1 Bertha Park is an area situated to the North of Perth in the Council Ward of Strathtay. The Bertha Park site currently consists of a large farm unit with associated outbuildings and cottages, set within expansive south facing, gently rolling fields, enclosed by substantial woodland areas to the north and to the south. The site is bounded to the east by the A9, the Perth to Dunkeld rail-line and the River Tay and to the south by the River Almond. The River Tay and its tributaries, including the River Almond, are designated as Special Areas of Conservation. The Local Development Plan proposal for this area is for a new community of 3,000 houses.

6.2 The village of Pitcairngreen, a designated conservation area, is situated to the west of the Bertha Park site and contains the nearest formal open space. Bridgeton, also to the west of the site, has the nearest shops. Redgorton and Battleby are to the north of the site. The site and its surrounds to the north and east are within a Green Belt area considered to have particular scenic value.

6.3 Inveralmond Industrial Estate, supporting a variety of employment uses, is situated to the south east and is separated from the site by the River Almond. The Almond Valley area to the south of Bertha Park is also south of the River Almond. It is currently, mainly, agricultural land but also includes residential and business uses. The Local Development Plan proposal for this area is for a new community of 1,500 houses with primary school, sports facilities, shopping and employment facilities with the necessary infrastructure provision.

The map below identifies the Bertha Park site area, proposed school site and phase 1 of the Perth Transport Futures Project: A9/A85 to Bertha Park:



Reproduced by permission of Ordnance Survey on behalf of HMSO. © Crown copyright and database right (2014). All rights reserved. Ordnance Survey Licence number 100016971.

6.4 The Bertha Park site area falls within the existing secondary school catchment area of Perth Grammar School.

6.5 There are a significant number of archaeological points of interest throughout the site, and the site contains two Scheduled Ancient Monuments: the Bertha Roman Fort at the site's south eastern corner, and a cairn near the site's western boundary.

6.6 Bertha Loch, enclosed by woodland, sits to the north of the site. From the eastern edge of the loch, a small valley burn drains eastward down into the Tay floodplain at the eastern boundary of the site. The Gelly Burn bounds the site to the west, flowing southwards towards the River Almond. A small pond is found in the central area of the site.

7. CURRENT SCHOOL INFORMATION

7.1 Perth City has 3 non-denominational secondary schools providing education to the City of Perth and the surrounding local area. These are:

- Perth Academy
- Perth Grammar School
- Perth High School

7.2 A rolling programme of upgrade works is underway at all three secondary schools.

7.3 Perth Academy

Perth Academy is located in Murray Place, Perth and has capacity for 1,218 pupils. The school roll at the 2013 Census was 1,024 pupils.

The main school building has been constructed over three phases. The school is a traditional building with a feature clock tower above the main entrance. The second phase was a three storey extension built c1960's and a further extension, more in keeping with the existing building, was built in 1980 with a link corridor to the existing building.

The main school building includes areas such as: general classrooms, practical classrooms, support areas, non-teaching areas, hall, staff room, toilets, stores, offices, library and circulation areas. The sports hall complex was built c1982. Two sports halls, changing rooms, showers, toilets and a foyer are provided. The dining centre is a traditional single storey building and this building contains two halls, an industrial kitchen, toilets, common room and store.

Other buildings onsite include a cricket pavilion, Scout hut, gas meter storage, power and plant room, and metal storage containers. The external areas encompass vehicle parking and circulation areas, pedestrian circulation areas, playing fields, Astro Turf five-a-side football/tennis court and the development of a synthetic sports pitch is in progress.

7.4 Perth Grammar School

Perth Grammar School is located in Gowans Terrace, Perth and has capacity for 1,182 pupils. The school roll at the 2013 Census was 1,009 pupils.

The main building is a three storey building, built c1980. The main school building includes areas such as: general classrooms, practical classrooms,

support areas, non-teaching areas, hall, kitchen, dining, offices and administration suite, toilets, changing rooms, theatre, gym and library.

A single storey section of the main building is situated at the north-east corner. This area of the building is dedicated to a Community Wing. On site is the George Duncan Athletics Arena including a two storey grandstand, with a stepped seating arrangement. The grandstand also provides toilets, showers and changing rooms.

Other buildings on site include a boiler house, hairdressing training salon, covered outdoor teaching area, gas meter housing, shelter, cycle shelter, snack hut and steel storage containers. The external areas encompass tarmac surfaced driveway and car parking, with concrete paving slab foot paths and landscaped areas, floodlit sports field and grandstand.

7.5 Perth High School

Perth High School is located in Oakbank Road, Perth and has capacity for 1,546 pupils. The school roll at the 2013 Census was 1,445 pupils.

The main building is a four storey classroom building. The main school building includes areas such as: general classrooms, practical classrooms, support areas, non-teaching areas, hall, kitchen, dining, staffroom, offices and administration suite, toilets, showers, changing rooms, theatre, gym and library.

Other buildings on site include an electric sub-station, shed, greenhouse, bicycle shelter, gas meter housing and a mobile snack unit. The external areas encompass paved and tarmac paths and roadways throughout the site, including vehicle access roadway to west and north of the building. Staff car park, grassed and planted areas and grass and synthetic grass sports pitches are also on site.

7.6 Perth City Campus

Perth City Campus is an initiative where access is now provided to a greater range of course opportunities for senior pupils by pulling together staffing and resources from the four Perth secondary schools (Perth Academy, Perth Grammar School, Perth High School and St John's RC Academy) and Perth College UHI.

The aims of the Perth City Campus is for the breadth of curriculum options to become more equitable across the city schools and to ensure as far as possible that lower demand subjects continue to be offered especially at Advanced Higher. It has also allowed for several new Higher and National courses to become available. Perth City Campus also develops co-operation and good relationships between young people and across the schools and enhances online 'virtual learning' opportunities in all schools.

The key benefits delivered by the implementation of the Perth City Campus include:

- improved attainment and achievement levels of young people
- a wider and more equitable range of learning options available to meet the learning needs of Senior Phase pupils
- learning opportunities are more flexible and accessible
- supporting all relevant student pathways in a consistent, staff-efficient and viable way
- developing cooperation and improved relationships between young people and across schools building on the existing excellent citizenship approaches within schools
- preparing pupils for beyond education

By the time the new secondary school is operational in March 2018, the Perth City Campus initiative will have been running for 5 years.

8. PRESENT CATCHMENT AREA ARRANGEMENTS

8.1 Each secondary school has a defined catchment area which consists of the combined associated primary school catchment areas served by the secondary school.

8.2 The current catchment area of Perth Academy covers the primary school catchment areas of the following primary schools:

- Balbeggie Primary School
- Burrelton Primary School (dual catchment with Blairgowrie High School)
- Collace Primary School
- Goodlyburn Primary School
- Guildtown Primary School
- Letham Primary School
- Oakbank Primary School (dual catchment with Perth High School)
- Robert Douglas Memorial Primary School
- Viewlands Primary School (dual catchment with Perth High School)
- And pupils living in Oudenarde

8.3 The current catchment area of Perth Grammar School covers the primary school catchment areas of the following primary schools:

- Auchtergaven Primary School
- Balhousie Primary School
- Glendelvine Primary School (dual catchment with Blairgowrie High School)
- Logiealmond Primary School
- Luncarty Primary School
- Methven Primary School
- Murthly Primary School
- North Muirton Primary School
- Pitcairn Primary School

- Royal School of Dunkeld Primary School (dual catchment with Breadalbane Academy)
- Ruthvenfield Primary School
- St Ninian's Primary School
- Stanley Primary School
- Tulloch Primary School

8.4 The current catchment area of Perth High School covers the primary school catchment areas of the following primary schools:

- Abernethy Primary School
- Abernyte Primary School
- Craigie Primary School
- Dunbarney Primary School
- Errol Primary School
- Forgandenny Primary School
- Forteviot Primary School
- Inch View Primary School
- Inchtute Primary School
- Invergowrie Primary School
- Kinnoull Primary School
- Longforgan Primary School
- Moncreiffe Primary School
- Oakbank Primary School (dual catchment with Perth Academy)
- St Madoes Primary School
- Viewlands Primary School (dual catchment with Perth Academy)

8.5 Pupils living within these areas are considered to be entitled to attend the designated secondary school as an entitled pupil.

9. EXISTING TRANSFER ARRANGEMENTS BETWEEN PRIMARY SCHOOLS AND SECONDARY SCHOOL

9.1 Parents/carers of children who are transferring to begin secondary school education in the August of any one year receive a letter from Perth & Kinross Council during the month of January offering a place to their child at the secondary school in whose catchment area he/she lives.

9.2 The offer of a secondary school place is determined by the child's home address at the time of allocating secondary school places.

9.3 Parents who have made a successful placing request for their child to attend a particular primary school other than their catchment school may not be offered a place for their child in the associated secondary school if their home address is not within the catchment area for that secondary school.

9.4 If parents/carers do not wish their child to attend the catchment secondary school, they can decide to make a placing request to send their child to another secondary school.

10. EXISTING SCHOOL TRANSPORT ARRANGEMENTS

- 10.1 Perth & Kinross Council provides free school transport for the following categories of pupils who attend Perth & Kinross Council schools:
- Primary school pupils who live more than two miles away from their catchment school.
 - Secondary school pupils who live more than three miles away from their catchment school.
 - Pupils who have been 'zoned out' to an alternative school by Education and Children's Services as a result of accommodation issues at their catchment school, who live more than two miles from the 'zoned out' primary school or more than three miles from the 'zoned out' secondary school.
 - Pupils who live under the official walking distances from their catchment school, and have a recognised medical condition that significantly affects their mobility.
 - Where no public transport exists, pupils who live under the official walking distances from their catchment school where the walking route has been considered unsafe for a pupil to walk accompanied by a responsible adult.
 - Pupils with Additional Support Needs who are considered to require transport to meet their specific individual needs.
- 10.2 Transport is provided from a suitable point on the public highway which may be up to two miles (primary) or three miles (secondary) from the pupil's home.
- 10.3 Parents who have made successful placing requests for their children to attend other schools of their choice have to make their own transport arrangements and meet the costs thereof.
- 10.4 Pupils from the affected schools' catchment areas are currently provided with home to school transport to attend secondary school as follows:
- Oudenarde catchment pupils are currently provided with home to school transport to Perth Academy.
 - Auchtergaven, Logiealmond, Methven, Pitcairn and Ruthvenfield catchment pupils are currently provided with home to school transport to Perth Grammar School.
 - Forgandenny, Forteviot and Dunbarney catchment pupils are currently provided with home to school transport to Perth High School.

11. THE NEW SECONDARY SCHOOL

- 11.1 The new non-denominational secondary school will accommodate 1,100 secondary pupils.
- 11.2 The maximum S1 intake which will be accommodated each year in the new secondary school will be determined by the Council based on factors which consider staffing levels and pupil projections.

- 11.3 The building will make a clear civic statement about the value the Council places on investing in education and lifelong learning, and will be a focal point for the local community.
It will benefit from modern design and materials and consider good practice learned through collaborative working with other Councils and through experience and good practice developed within Perth & Kinross as part of the Investment in Learning Programme. The building will be sustainable and energy efficient.
- 11.4 It is important that the school is flexible and allows the creative and multiple use of spaces by the staff and pupils, and also by the community. The design of the school is still to take place, however, the accommodation will include a sports hall, dining areas and learning resource centre.
There will be a number of grass sports pitches and an All Weather Pitch. Car parking, bus bays and drop off areas will also form part of the design. The school will provide facilities for pupils with Additional Support Needs (ASN).
- 11.5 The specific layout and plans for the new school will be developed in due course and will be made available through further consultation with key stakeholders in due course through the establishment of a User Reference Group and other associated meetings. The purpose and role of the User Reference Group is to assist with providing relevant local information to allow the Design Team to develop the outline concept design into an operational design.
- The User Reference Group normally consists of representatives such as Education and Children's Services, Architectural design, Headteachers, teaching and non-teaching staff representatives from the affected schools, Pupil Council representatives, Parent Council representative, Community Capacity Building Worker, Community Council representative, Church representative and Local Elected Members.
- 11.6 The new school will be accessed via a new road to be constructed as part of the development.

12. NEW CATCHMENT AREA PROPOSALS

- 12.1 The proposal for the new secondary school catchment area is to:
- Include pupils from new Local Development Plan housing areas at Bertha Park, Almond Valley and Perth West;
 - Include the primary school catchment areas serving Auchtergaven, Logiealmond, Methven, Pitcairn and Ruthvenfield, which are currently included in Perth Grammar School catchment area;
 - Include the catchment serving Oudenarde, which is currently included in Perth Academy catchment area; and
 - Include the primary school catchment areas serving Forgandenny, Forteviot and Dunbarney, which are currently included in Perth High School catchment area.

A map of the proposed catchment area for the new secondary school is shown in Appendix 2.

12.2 The new catchment area of Perth Academy will therefore cover the primary school catchment areas of the following primary schools:

- Balbeggie Primary School
- Burrelton Primary School (dual catchment with Blairgowrie High School)
- Collace Primary School
- Goodlyburn Primary School
- Guildtown Primary School
- Letham Primary School
- Oakbank Primary School (dual catchment with Perth High School)
- Robert Douglas Memorial Primary School
- Viewlands Primary School (dual catchment with Perth High School)

12.3 The new catchment area of Perth Grammar School will therefore cover the primary school catchment areas of the following primary schools:

- Balhousie Primary School
- Glendelvine Primary School (dual catchment with Blairgowrie High School)
- Luncarty Primary School
- Murthly Primary School
- North Muirton Primary School
- Royal School of Dunkeld Primary School (dual catchment with Breadalbane Academy)
- St Ninian's Primary School
- Stanley Primary School
- Tulloch Primary School

12.4 The new catchment area of Perth High School will therefore cover the primary school catchment areas of the following primary schools:

- Abernethy Primary School
- Abernyte Primary School
- Craigie Primary School
- Errol Primary School
- Inch View Primary School
- Inchtute Primary School
- Invergowrie Primary School
- Kinnoull Primary School
- Longforgan Primary School
- Moncreiffe Primary School
- Oakbank Primary School (dual catchment with Perth Academy)
- St Madoes Primary School
- Viewlands Primary School (dual catchment with Perth Academy)

12.5 Pupils living within these areas will be able to attend the designated secondary school as an entitled pupil.

13. NEW TRANSFER ARRANGEMENTS BETWEEN PRIMARY SCHOOLS AND SECONDARY SCHOOL

- 13.1 Parents/carers of children who are to transfer to secondary school in August of any one year will receive a letter from Perth & Kinross Council during the month of January offering a place to their child at the secondary school in whose catchment area he/she lives.
- 13.2 The offer of a secondary school place is determined by the child's home address at the time of allocating secondary school places.
- 13.3 It is proposed to populate the new school with pupils from the following existing primary school catchment areas; Methven, Logiealmond, Pitcairn, Ruthvenfield, Auchtergaven, Dunbarney, Forteviot, Forgandenny and pupils residing in Oudenarde.
- 13.4 In addition, pupils from the new developments/strategic sites at Bertha Park, Almond Valley and Perth West will form part of the school catchment.
- 13.5 The current policies on School Admission and Placing Requests would continue to apply to the new school.
- 13.6 From August 2017 the S1 pupils from the proposed new catchment area will be allocated a place at the new secondary school. Until the new school building is operational in March 2018, this year group will be located at the designated host secondary school in Perth.
- 13.7 The designated host secondary school will be located within an existing Perth secondary school and this has been provisionally identified as Perth Grammar School.
- 13.8 Parents will continue to have the right to make a Placing Request for another secondary school of their choice if they do not wish their child to transfer temporarily to the designated host school or to the new secondary school when completed. Parents who make successful placing requests for their child(ren) to attend a school of their choice are required to accept full responsibility for all arrangements and costs relating to transporting them to school.

14. TRANSITION ARRANGEMENTS BETWEEN 2017/2018 AND 2022/2023

- 14.1 The Council is fully committed to working with parents to support choices for their child's place of education during the transition period of populating the new school. The Council recognises that in populating the new secondary school on a phased basis, this may have implications for parents who have children already in attendance at secondary school who have younger siblings yet to commence secondary school.

- 14.2 Pupils living in the affected area detailed in Section 12.1 who have already commenced their secondary education at the time of the new secondary school opening can remain in their chosen secondary school. No existing secondary school pupils will be required to move school after the new secondary school opens unless that is by parental choice and that year group is operational in the new school.
- 14.3 Pupils living in the proposed new catchment area who have an older sibling(s) in attendance at their previously designated secondary school will be permitted to attend the previously designated secondary school if parents wish siblings to attend the same school until the new school is fully operational in 2022/2023.
- 14.4 Older siblings of pupils attending the new secondary school will be unable to transfer to the new secondary school unless their year group is operational in the new secondary school.
- 14.5 Families moving into the proposed new catchment area with secondary school age children in a year group not yet operating in the new secondary school will be allocated a place in the existing designated secondary school.
- 14.6 Placing requests for older pupils living outwith the proposed new catchment area to attend the new secondary school will not be possible until such time as their year group is operational in the new secondary school.
- 14.7 Families moving into the area during the school session with children in more than one year group who cannot all be accommodated in the new secondary school will have the option to send all their children to the existing designated secondary school serving the older pupils, where possible.
- 14.8 As it is proposed that the new secondary school will be populated on a phased basis with S1 pupils from 2017/2018, the designated secondary school for older secondary pupils living in, or moving into the proposed catchment area for the new secondary school is shown in Appendix 3.

15. TRANSITION ARRANGEMENTS

- 15.1 The Council is fully committed to ensuring continuity of provision for young people who will be affected by the proposals. The need for improved transition is recognised both nationally and locally and is central to continuity of education and progression through the curriculum.
- 15.2 A transition programme for pupils will be established with the aim of creating and developing a positive school ethos. The establishment of a new school offers a unique and rich context for learning. The programme will include a range of activities such as joint learning themes, excursions, social and sporting events. .

- 15.2 In addition, a high level of engagement activities will be planned with parents, pupils and staff from the earliest stages of the development of the new school to enhance stakeholder engagement which are known to contribute to smooth transitions for young people as they move from one school to another. Pupil Support staff will liaise to ensure that the learning, pastoral and social needs of children are fully supported during the transition process. In full consultation with all the associated schools, and supported by Education Services, a transition programme will be produced specifying clear targets and agreed timescales.

16. TIMESCALE

As part of the funding offer for the new secondary school, the Scottish Futures Trust (SFT) confirmed that the construction of the new secondary school will require to be complete and operational no later than 31 March 2018.

In order to populate the new secondary school there will be a phased approach to the transition of pupils from existing schools to the new school.

Year 1 Session 2017/2018

- In August 2017 S1 pupils from the proposed new catchment schools will be brought together as one group. It is proposed that these pupils will be temporarily located in one of the existing Perth City secondary schools and timetabled together.
- By March 2018 the new school will be open and that S1 group will transfer to the new school.
- A buddying/mentoring programme will be led by senior pupils from the Perth City Campus to support transition.
- Staffing levels and timetabling arrangements will be adjusted within the host school to ensure that this model is successfully implemented with the increased number of pupils.
- A Transitional Leadership Team of the host school will assume responsibility for the initial S1 group and prepare them and support them through the transition to the new school.
- This group of pupils will be actively involved in consultations about their new school.
- Opportunities for parental involvement and engagement will be established, including the setting up of a new Parent Council.

Year 2 Session 2018/2019

- In August 2018 the new S1 pupils from the proposed new catchment area attend the new school and join the now established S2 pupils.
- A buddying/mentoring programme led by senior pupils from Perth City Campus and S2 pupils will continue to support transition (see Section 7.6).
- In August 2018 Perth City Campus senior phase subjects will have been identified which will be delivered in the new school. This will develop ethos and citizenship and provide the same peer support opportunities for younger pupils. Senior pupils undertaking those subjects will attend the new school when appropriate at times throughout the week.
- The new secondary school Leadership Team will have been established and operational for the start of the new school session in August 2018.
- The new school will have appropriate levels of teaching and support staff in place which will be adjusted as the school roll grows. Staffing levels will continue to link to the Perth & Kinross Council Staffing Standard.

Year 3 Session 2019/2020

- In August 2019 the school will be populated by years S1-S3 (Curriculum for Excellence Broad General Education for Secondary) and the Perth City Campus senior pupils attending for their particular curriculum choices.

Year 4-6 Session 2020/2022

- By August 2022 the school will be fully populated ie S1-S6 as pupils advance through the school and Perth City Campus senior pupils.

17. NEW SCHOOL TRANSPORT ARRANGEMENTS

- 17.1 Perth & Kinross Council will continue to provide free school transport for pupils who attend Perth & Kinross Council schools in accordance with existing policy as outlined in Section 10.
- 17.2 Parents who make successful placing requests for their children to attend schools other than their catchment school have to make their own transport arrangements and meet the costs thereof.

- 17.3 Pupils living in the proposed new catchment area will be provided with home to school transport to attend the new secondary school where the pupil's home address is more than 3 miles from the new school:
- Auchtergaven
 - Dunbarney
 - Forgandenny
 - Forteviot
 - Logiealmond
 - Methven
 - Oudenarde
 - Pitcairn
 - Ruthvenfield
- 17.4 Transport is provided from a suitable point on the public highway which may be up to two miles (primary) or three miles (secondary) from the pupil's home.
- 17.5 Pupils from the above areas who have already commenced their secondary education at their designated secondary school, and are currently entitled to receive home to school transport, will continue to be provided with transport until their secondary education is completed.
- 17.6 Pupils living in the proposed new catchment area who have an older sibling in attendance at their previously designated secondary school who elect to send their S1 child to the same school as their older sibling, will be provided with home to school transport for the duration of their education to attend the same school as their sibling. This arrangement will operate until Session 2022/23 when the new secondary school will be fully operational across S1 to S6 stages.
- 17.7 School Travel Plans are an essential part of Perth & Kinross Council's strategy to tackle issues related to school transport. School Travel Plans also include the promotion of initiatives to increase the number of school children and staff who walk, cycle or use public transport to get to their school.
- 17.8 A School Travel Plan is a strategy developed by each school to encourage and promote more active journeys to school for both pupils and staff. The role of the School Travel Plan is to make alternatives to driving easier and safer, and to give parents/carers and staff plenty of information about the options. A School Travel Plan can help to improve the school run, reduce congestion and increase road safety, make school pupils and staff healthier, make routes to school safer and look after our environment.
- 17.9 A School Travel Plan for the new secondary school will be developed in consultation with pupils, parents and staff.

18. LIKELY EFFECT OF DIFFERENT TRAVELLING ARRANGEMENTS

- 18.1 Owing to the location of the proposed site of the new school there should be no significant changes to school transport provision for eligible pupils. There will be no change in eligibility for pupils entitled to home to school transport. However, it is recognised that there will be changes to methods of travel for some pupils who will, in the future, be within walking and cycling distance to the new school. It is also recognised that there may be changes to travel arrangements and methods of travel for some staff. This will be identified during the development of a School Travel Plan for the new secondary school.

19. EDUCATIONAL BENEFITS STATEMENT

- 19.1 The underlying need for the planned development of a new secondary school has already been set out in Section 3.

19.2 The Educational Benefits

A new modern secondary school will signal to the whole community how Perth & Kinross Council values 21st century learning. This new build will represent best value through the effective and efficient use of Council resources.

- 19.2.1 The new school will benefit from design practices which support the varied range of teaching environments that best deliver learning. Spaces for learning will be designed in such a way as to allow a range of teaching styles and approaches including: active learning, interdisciplinary learning and outdoor learning.

Experience in our other new school buildings has demonstrated that a new and flexible learning environment has inspired pupils and has a positive impact on the general health and wellbeing of learners, increases aspirations, attainment, achievement and positive destinations beyond school. This is evidenced through improving trends in attainment and achievement of our young people.

- 19.2.2 The curriculum will provide the opportunity for learners to achieve across all curricular areas and develop skills, attributes and capabilities through courses aligned with the design principles of Curriculum for Excellence: challenge and enjoyment, breadth, progression, depth, personalisation and choice, coherence and relevance.

- 19.2.3 Children and young people will be provided with a broad range of opportunities for personal achievement and interdisciplinary learning across all curriculum areas and subjects by building on best practice in curriculum design in Perth & Kinross schools.

- 19.2.4 By alleviating current and future capacity pressures on the existing school estate, the ability to create flexible learning spaces in all schools will improve the range of learning environments across the existing three non-denominational secondary schools in Perth.

This will allow aspirations, attainment and achievement to continue to develop across all Perth City secondary schools. The proposals will bring a better balance between the number of pupils in the secondary school communities and the capacities of these schools.

- 19.2.5 The new school will form part of the Perth City Campus (see section 16). Pupils in the senior phase of the school will benefit from the improved opportunities for personalisation and choice that the current City Campus arrangement offers by providing a broader range of Advanced Higher and Higher qualifications as well as vocational courses than can usually be offered by a single school site.
- 19.2.6 By locating the school at the heart of the new community it will provide a hub for learning, activities and facilities that will make a contribution to improving people's health and wellbeing, adding to the strength and vibrancy of its community.
- 19.2.7 The proposed new school will provide excellent facilities for children, families and other users outwith core school hours. The new school will provide accessible facilities that could be used to meet the learning, leisure and social needs of the community.
- 19.2.8 Tracking and monitoring systems including arrangements for P7 portfolios and P7 and S3 profiling will build on the systems already in place in all primary schools to ensure progression for all learners through the Broad General Education and on into the Senior Phase.
- 19.2.9 The new school will support the delivery of vocational learning and promote skills for learning, life and work and deliver positive outcomes for young people in a modern well equipped environment. These facilities will be available for access across the Perth City Campus (Perth Academy, Perth Grammar School, Perth High School and St John's RC Academy) and the associated primary schools.
- 19.2.10 The provision of high quality technology for learning will provide the potential to transform ways of learning and teaching by giving young people and staff flexible and ubiquitous access to a fully digital learning environment.

- 19.2.11 The shared flexible learning and teaching spaces in the new school will enable staff to work together in a collaborative manner and provide more opportunities for co-operative working between pupils.
- 19.2.12 The additional learning and teaching community at the new school will provide increased opportunities to share good practice, to improve curriculum development and to share thinking and materials across Perth & Kinross schools. This will also result in greater scope for delivery of continued lifelong professional learning for all staff.
- 19.2.13 The new school will ensure that accessibility for learners with disabilities complies with the Council's Accessibility Strategy and the Equality Act (2010).
- 19.2.14 The new school will be designed in such a way as to promote accessible, inclusive learning which will meet the needs of all learners including those with Additional Support Needs. The new school will provide additional specialist provision to enhance the Local Authority's capacity to meet the needs of young people with severe and complex Additional Support Needs, to remain in mainstream education provision within Perth & Kinross.
- 19.2.15 Pupil Support staff and teaching staff will work closely with all associated primary schools to ensure that the learning, pastoral and social needs of children are fully supported during the transition process, including enhanced arrangements for children and young people with Additional Support Needs.
- 19.2.16 The new school will build on current, and facilitate new, opportunities for effective integrated working with other services and partner agencies and will provide necessary support to children and families in the new school catchment area.
- 19.2.17 The new school's design, construction and operation will be environmentally and energy efficient; contributing directly to delivering the year-on-year reductions in greenhouse gas emissions introduced by the Climate Change (Scotland) Act 2009 and provide a rich context for learning for children and young people about sustainability now and in the future.
- 19.2.18 The new school building will be flexible both as the school becomes fully populated and in response to learners' and teachers' requirements. The beneficial impact of change will be maximised through consultation and engagement with users.

- 19.2.19 Reduced congestion and planned travel options will make it safer for our young people to access their places of learning and contribute to improved air quality and traffic management in Perth City. Pupils from Bertha Park and potentially the Almond Valley area will be within walking distance of the new school contributing to the sustainability agenda.

19.3 Educational Benefits for Affected Secondary Schools as a Result of Realigned Catchment Areas

The establishment of the new secondary school will have a positive impact on the balance between the numbers of pupils in the affected secondary school communities, which will allow an equitable provision of courses and subjects. In addition it will alleviate projected pupil roll pressures across identified Perth City secondary schools from potential housing developments identified in the adopted Local Development Plan. The alleviated roll pressures will enhance the opportunity to create more flexible learning spaces, in which to facilitate co-operative and interdisciplinary learning, reduce pressure on technology and practical teaching spaces, and improve the social environment.

The new school will also allow the Perth City Campus arrangements to be expanded to five schools, further broadening the range of available subjects in the senior phase for all pupils.

Perth Grammar School

Perth Grammar School's core values are Pride, Respect and Ambition and in order to realize these for all learners our long term vision is to improve attainment for all, leading to appropriate, positive and sustainable destinations for our young people. The proposed new school will result in increased capacity within the accommodation at Perth Grammar School. This in turn will allow the school to continue to build a strong academic core and also give it the potential to develop specialist provision to suit the needs of Perth & Kinross' growing markets such as Hospitality, Creative Industries and Tourism along with the emerging Engineering and Energy industries. Building on our two already well-established and successful partnerships, the Sports Comprehensive and Perth City Campus, the new school will allow our learning community to grow providing an even broader range of learning opportunities for our young people.

Perth High School

Perth High School is committed to ensuring that each pupil has the opportunity to grow as a person and as a learner in a society that provides many challenges as well as exciting possibilities for young people. In order to continue to deliver the highest quality of education at Perth High School, it is essential that the young people are able to share in the enhanced learning opportunities created by the new school, building on the already highly successful Perth City Campus initiative. The proposed new school will enable the learning community to share in a greater range of learning experiences than is currently available.

Perth Academy

Perth Academy is committed to providing a caring community, inspiring learning and celebrating the successes of every learner. Within the context of a highly successful Perth City Campus model the proposed new school will extend the breadth of curricular options offered to pupils in the Senior Phase. Perth Academy will seek to build on their current curricular provision and ensure that all young people benefit from courses and programmes that are at an appropriate level and meet learner needs.

19.4 Transferring Primary Pupils – benefits

Children from the affected primary schools who will transfer to the new secondary school will benefit from the new purpose built secondary school. (See specific benefits listed in section 19.2). The pupils associated with this proposal will benefit from being in a school where capacity pressures are not impacting on the learning environment e.g. flexibility of learning spaces, flow of pupil traffic etc. For pupils in the Oudenarde area this change provides an opportunity to develop greater links with pupils from adjacent communities and to move to the same secondary school as pupils from those communities.

20 LEADERSHIP ARRANGEMENTS

- 20.1 A Transitional Leadership Team (TLT) will be established and led by the new Headteacher. This team will initially include Education Services and members from the host school that will accommodate the initial S1 group.
- 20.2 The Transitional Leadership Team (TLT) will continue to drive improvement and raise standards through the Perth & Kinross Council School Improvement Framework ensuring positive outcomes for all learners.
- 20.3 The Transitional Leadership Team (TLT) will include Support for Pupils staff and will be established during session 2016-17. This team will take responsibility for transition arrangements around pupil learning, pastoral, and personal support needs to ensure continuity and support for these young people during transition to the new school.

21. IMPLICATIONS FOR STAFF

- 21.1 Staffing arrangements will be consistent with Perth & Kinross Council Staffing Standard and other local agreements.
- 21.2 Staff from the existing schools will be utilised to support the delivery of the curriculum in the new school from March 2018. The staffing complement will be reviewed and some transitional support in respect of staffing will be available. There are likely to be opportunities for a number of promoted staff posts.
- 21.3 The Transitional Leadership Team will produce a management structure in consultation with Trade Unions and professional associations.
- 21.4 Detailed consultation will be undertaken with individual members of staff, Trade Unions and professional associations on an implementation plan for staffing the new secondary school as the school roll rises.
- 21.5 The Transitional Leadership Team will put in place arrangements to staff the school following the Perth & Kinross Council Recruitment and Selection policies and procedures. The full staffing complement will be in place when the school is fully operational for S1-S6 and Perth City Campus in year 2022.
- 21.6 A new Local Management Group will be established with representatives from the new school Leadership Team and associated primary school Headteachers.

22. LIKELY EFFECT ON THE LOCAL COMMUNITY

- 22.1 By locating the school at the heart of the new community it will provide a hub for learning, community activities and facilities that will make a contribution to improving people's health and wellbeing, adding to the strength and vibrancy of its community.
- 22.2 The proposed new school will provide excellent facilities for children, families and other users outwith core school hours. The new school will provide facilities which could be used to meet the learning, leisure and social needs of the community.
- 22.3 The new secondary school will provide a range of sports and community facilities within its locality.
- 22.4 It is anticipated that this proposal may have wider benefits to the community in respect of:
- local employment opportunities
 - apprenticeships on the construction of the new school
- 22.5 It is believed that this proposal will positively impact on local, social or economic activities and will support the local development of the area.

- 22.6 The Council will continue to work with existing community groups and new community groups as they develop.

23. SUSTAINABILITY

Sustainability will be a key factor in the design of the new school and will be incorporated into every feasible aspect. This ranges from the materials used to the heating system and the lighting provided, and also to the landscaping of the external site to encourage biodiversity.

24. EQUAL OPPORTUNITIES

- 24.1 An Equality Impact Assessment (EqIA) is a statutory requirement for the Council to assess the policies and practices necessary to meet the requirements of anti-discrimination and equalities legislation. An EqIA can provide more information to develop and deliver services that meet the needs, in this case, of children, parents and staff.
- 24.2 The aim of an EqIA is to examine policies and practice in a structured way to make sure that adverse effects on equality target groups are avoided. It is also a tool to enable the Council to assess what positive steps it can take to promote equality of opportunity and measure the results of the actions that have been taken.
- 24.3 Having regard to provision of a new secondary school, it is not believed that this will have a negative impact on any of the equality target groups.
- 24.4 As part of the consultation process the Council will consult with a wide range of stakeholders, including staff, parents/carers and young people, and will address comments about equality during this consultation.
- 24.5 Under the Equality Act 2010, education providers must not treat disabled pupils less favourably and should take reasonable steps to avoid putting disabled pupils at a substantial disadvantage. The new secondary school will comply with the Council's Accessibility Strategy and, therefore, would positively promote equal opportunities for any child who has a disability.

25. CONCLUSION

- 25.1 The Council believes that the measures proposed in this document will enhance the provision of secondary education in Perth & Kinross.
- 25.2 This proposal will provide a positive balance between the numbers of pupils in the affected secondary schools and alleviate projected pupil roll pressures across Perth City secondary schools.
- 25.3 There are strong educational and economic arguments in favour of this proposal.

- 25.4 Future pupil projections have been considered and the new secondary school can accommodate all projected and potential pupils from the catchment area.
- 25.5 Environmental impacts have been summarised and detailed work will be done as part of the environmental assessment for this proposal.
- 25.6 The local communities are well served by the existing secondary schools and primary schools which act as focal points for community events and it is anticipated that the establishment of a new secondary school would have a positive impact and will enhance this further. It is believed that that provision of a new secondary school will seek to enhance the existing provision.
- 25.7 In summary, it is proposed that a statutory consultation exercise takes place on a proposal for a new secondary school to be established on a preferred site at Bertha Park, Perth.

26. RESPONDING TO THE PROPOSAL

- 26.1 Interested parties are invited to respond to the proposal by making written, electronic or online submissions on the proposal.

Online: www.pkc.gov.uk

By e-mail: ECSStatutoryConsultations@pkc.gov.uk

In writing: The New Secondary School Consultation, Education and Children's Services, Pullar House, 35 Kinnoull Street, Perth, PH1 5GD

no later than close of business on 19 November 2014.

- 26.2 A form is provided at Appendix 5 for the convenience of those wishing to respond in writing. Its use is not compulsory.

However, those wishing to respond are invited to state their relationship with the school – for example, “pupil”, “parent”, “grandparent”, “former pupil”, “teacher in school”, “member of the Community” etc. Responses from the Parent Councils, staff, and Pupil Council are particularly welcome.

- 26.3 Those sending in a response, whether online, electronically or by letter, should know that their response will be open to public scrutiny and may have to be supplied to anyone making a reasonable request to see it.
- 26.4 If they do not wish their response to be publicly available, they should clearly write on the document: “I wish my response to be considered as confidential with access restricted to elected members and council officers of Perth & Kinross Council.” Otherwise, it will be assumed that the person making the response agrees to it being made publicly available.

27. RECOMMENDATIONS

27.1 The Lifelong Learning Committee of Perth & Kinross Council agrees to adopt, for the purpose of consultation, the proposal that:

- (i) The Council proposes to establish a new secondary school on a preferred site at Bertha Park, Perth with effect from March 2018;
- (ii) The Council proposes to vary the existing admission arrangements to alter the catchment areas serving Perth Grammar School, Perth High School and Perth Academy to establish a catchment area for the proposed new secondary school and establish temporary admission arrangements to accommodate the phased population of the new secondary school; and
- (iii) The Council proposes to vary the arrangements for the transfer of pupils from a primary school to a secondary school by altering the designated secondary school for the directly affected primary schools and establish temporary transfer arrangements to accommodate the phased population of the new secondary school.

27.2 It is also recommended that:

- i) Interested parties be invited to make submissions on the proposal

Online: www.pkc.gov.uk

or by e-mail: ECSStatutoryConsultations@pkc.gov.uk

or in writing: The New Secondary School Consultation, Education and Children's Services, Pullar House, 35 Kinnoull Street, Perth, PH1 5GD

no later than close of business on 19 November 2014.

- ii) The Executive Director (Education and Children's Services) is delegated authority to investigate and manage any alleged omissions or inaccuracies during the consultation process and to take appropriate action in accordance with The Schools (Consultation) (Scotland) Act 2010.
- iii) The Executive Director (Education and Children's Services) prepares a report on the results of the proposal process for consideration at a future meeting of the Lifelong Learning Committee.

A note of the key consultation dates is published in Appendix 4.

John Fyffe
Executive Director (Education and Children's Services)

Historical Secondary School Rolls

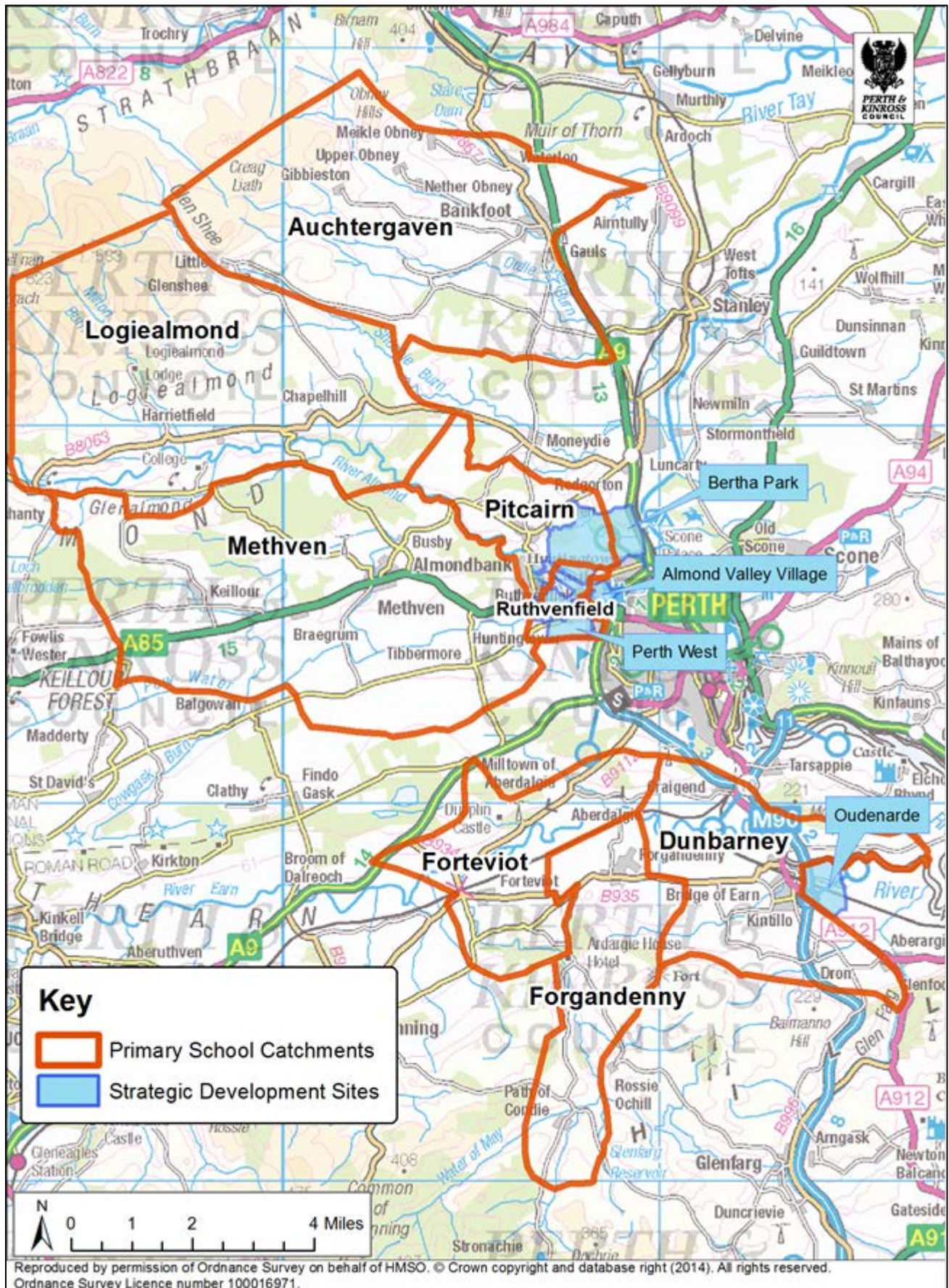
School Name	2004/ 2005	2005/ 2006	2006/ 2007	2007/ 2008	2008/ 2009	2009/ 2010	2010/ 2011	2011/ 2012	2012/ 2013	2013/ 2014
Perth Academy	1,045	1,062	1,046	1,054	1,061	1,037	1,005	1,014	1,000	1,024
Perth Grammar School	1,007	1,116	1,098	1,042	1,025	1,035	1,040	1,019	1,025	1,009
Perth High School	1,570	1,547	1,540	1,504	1,500	1,486	1,496	1,452	1,460	1,445
Total	3,622	3,725	3,684	3,600	3,586	3,558	3,541	3,485	3,485	3,478

Projected Secondary School Rolls if Perth & Kinross Council does nothing

School Name	2014/ 2015	2015/ 2016	2016/ 2017	2017/ 2018	2018/ 2019	2019/ 2020	2020/ 2021
Perth Academy	998	996	990	996	993	998	1,041
Perth Grammar School	997	989	1,013	1,034	1,033	1,034	1,053
Perth High School	1,450	1,477	1,505	1,552	1,575	1,664	1,710
Total	3,445	3,462	3,508	3,582	3,601	3,695	3,804

Map of Proposed New Secondary School Catchment Area

- Comprising existing primary school catchments and strategic development sites



Reproduced by permission of Ordnance Survey on behalf of HMSO. © Crown copyright and database right (2014). All rights reserved. Ordnance Survey Licence number 100016971.

Pupils from Dunbarney, Forgandenny and Forteviot catchment areas

School Session	S1 pupils	S2 Pupils	S3 Pupils	S4 Pupils	S5 Pupils	S6 Pupils
2017/2018	Host Secondary School (Aug-Mar) New Secondary School (Mar-Jun)	Perth High School	Perth High School	Perth High School	Perth High School	Perth High School
2018/2019	New Secondary School	New Secondary School	Perth High School	Perth High School	Perth High School	Perth High School
2019/2020	New Secondary School	New Secondary School	New Secondary School	Perth High School	Perth High School	Perth High School
2020/2021	New Secondary School	New Secondary School	New Secondary School	New Secondary School	Perth High School	Perth High School
2021/2022	New Secondary School	New Secondary School	New Secondary School	New Secondary School	New Secondary School	Perth High School
2022/2023	New Secondary School	New Secondary School	New Secondary School	New Secondary School	New Secondary School	New Secondary School

Pupils from Oudendarde catchment area

School Session	S1 pupils	S2 Pupils	S3 Pupils	S4 Pupils	S5 Pupils	S6 Pupils
2017/2018	Host Secondary School (Aug-Mar) New Secondary School (Mar-Jun)	Perth Academy	Perth Academy	Perth Academy	Perth Academy	Perth Academy
2018/2019	New Secondary School	New Secondary School	Perth Academy	Perth Academy	Perth Academy	Perth Academy
2019/2020	New Secondary School	New Secondary School	New Secondary School	Perth Academy	Perth Academy	Perth Academy
2020/2021	New Secondary School	New Secondary School	New Secondary School	New Secondary School	Perth Academy	Perth Academy
2021/2022	New Secondary School	New Secondary School	New Secondary School	New Secondary School	New Secondary School	Perth Academy
2022/2023	New Secondary School	New Secondary School	New Secondary School	New Secondary School	New Secondary School	New Secondary School

Designated Secondary Schools

Pupils from Auchtergaven, Logiealmond, Methven, Pitcairn and Ruthvenfield catchment areas plus strategic development sites of Bertha Park, Almond Valley and Perth West

Pupils from Dunbarney, Forgandenny and Forteviot catchment areas

Pupils from Oudenarde catchment area

School Session	S1 pupils	S2 Pupils	S3 Pupils	S4 Pupils	S5 Pupils	S6 Pupils
2017/2018	Host Secondary School (Aug-Mar) New Secondary School (Mar-Jun)	Perth Grammar Perth High Perth Academy	Perth Grammar Perth High Perth Academy	Perth Grammar Perth High Perth Academy	Perth Grammar Perth High Perth Academy	Perth Grammar Perth High Perth Academy
2018/2019	New Secondary School	New Secondary School	Perth Grammar Perth High Perth Academy	Perth Grammar Perth High Perth Academy	Perth Grammar Perth High Perth Academy	Perth Grammar Perth High Perth Academy
2019/2020	New Secondary School	New Secondary School	New Secondary School	Perth Grammar Perth High Perth Academy	Perth Grammar Perth High Perth Academy	Perth Grammar Perth High Perth Academy
2020/2021	New Secondary School	New Secondary School	New Secondary School	New Secondary School	Perth Grammar Perth High Perth Academy	Perth Grammar Perth High Perth Academy
2021/2022	New Secondary School	New Secondary School	New Secondary School	New Secondary School	New Secondary School	Perth Grammar Perth High Perth Academy
2022/2023	New Secondary School	New Secondary School	New Secondary School	New Secondary School	New Secondary School	New Secondary School

KEY CONSULTATION DATES

ACTION	DATE
Special Meeting of Lifelong Learning Committee approval of the commencement of the statutory consultation and the Proposal Paper for the new secondary school	25 June 2014
Letter issued to all statutory consultees advising publication of proposal paper including all Elected Members	10 September 2014
Public Notice adverts placed in local press	11 and 12 September 2014
Proposal paper published on pkc.gov.uk	11 September 2014
Statutory consultation period commences	11 September 2014
Public Meetings held	w/c 22 September 2014 (Mon-Thur)
Public Meetings held	w/c 29 September 2014 (Mon-Thur)
Statutory consultation period closes	19 November 2014
Representations and documentation sent to Education Scotland	(TBC)
Education Scotland visit to affected schools	(TBC)
Draft Education Scotland report received by PKC	(TBC)
Final Education Scotland report received by PKC	(TBC)
Proposal Reviewed and drafting of Consultation Report	(TBC)
Publication of Consultation Report	(TBC)
Publication of Consultation Report closes	(TBC)
Committee report and all documentation to be considered at Lifelong Learning Committee for final approval	No earlier than May 2015 Lifelong Learning Committee



Education and Children's Services Consultation Response Form

Consultation on the establishment of a new secondary school on a preferred site at Bertha Park, Perth and associated proposals to establish a catchment area for the school and the transfer arrangements for primary pupils

Please tick the response which applies to you/your organisation

I agree with the proposals as outlined in this consultation.....

I disagree with the proposals as outlined in this consultation

I would like to make the following representation for consideration:
(if required, please continue on the other side of this sheet)

This part of the form must be completed for a valid response:

Name: _____ Address: _____

Postcode: _____

Your Interest: (please tick)

Parent Child / Young Person Staff Other *

*Other: (please specify) _____

Elected Member / MSP / MP Member of Community Council

I wish my response to be considered as confidential with access restricted to Elected Members and Council Officers of Perth & Kinross Council

