

Abernethy Environmental Association

Jill Donnachie

Jill Young

Abernethy Parks Project

<http://abernethyparksproject.webs.com>

Introduction

- Who are we?
- Our story
 - In the beginning (2011)
 - Community consultation
 - Phases 1 & 2
 - CECF & other funders
 - Today
- Next...



Who are we?

- Abernethy Environmental Association
- Community of 800 households, rapid ↑ population, rural location, limited public transport
- Abernethy Parks Project



- Powrie Park
- Williamson Park

Abernethy Parks Project Vision

“Abernethy has places where everyone, especially young people, can enjoy spending time being physically active outdoors, interacting with their natural surroundings, taking risks in an environment where they feel safe and playing – alone or with others – in a wide variety of ways.”



Our Story – Powrie 2011...



Our Story – Powrie 2011 contd...



Our Story – Williamson 2011...



Community Consultation

'How best to develop Abernethy Parks so that more people in the community can enjoy and benefit from them, today and in years to come.'

10 question
survey
online &
paper

143 responses,
95% local

1/3rd of <17 & 60+ years
visit *once a year or never*
50+% *disappointing / not
welcoming / safe*
98% *want improvements*

AEA website, APP facebook page, direct email
posters, community meetings, focus groups

Our Story – Bike Park



Phase 1

- » Wishlist generated and need evidenced we **applied for 'phase 1' funding**
- » Small applications (< £10k) some unsuccessful
- » It took almost 1 year
- » Raised £34,700 from a variety of sources including grants, local business and community fundraising events
- » Significant help from PKC 😊



Phase 1...getting there



Phase 1 - complete



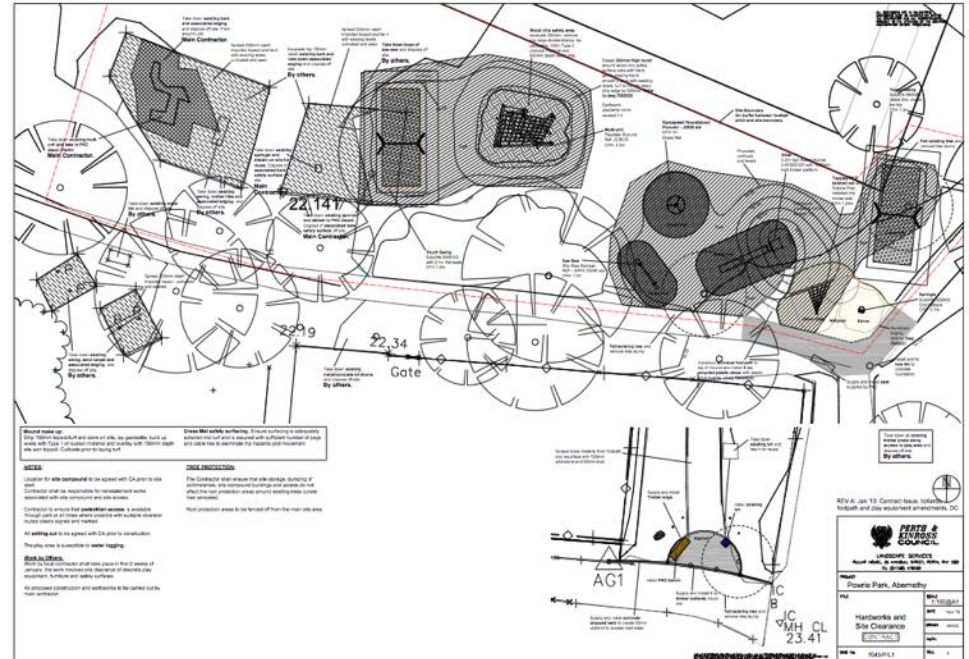
Community Consultation (follow up)



Communication & distribution as per initial survey
Improvement wish-list confirmed

Phase 2

- Funding deficit for Powrie of £60k
- SITA Trust £52k (CTP £5.7k)
- + maintenance & contingency



Flying fox
Trim trail
Car park

Footpath
Benches
Sensory
planting

Community Environment Challenge Fund and other funders

YOUR PARK NEEDS YOU!

We hope you have had the opportunity to enjoy (or watch others enjoy) the new play equipment in both Powrie and Williamson Parks - a great example of what the community can achieve when we work together. **Please give us your feedback on changes to both parks** by completing a short online survey at <http://www.surveymonkey.com/s/9Q6GTFF>

Now the Abernethy Parks Project needs your help to deliver the second phase of improvements to Powrie Park. This includes

- Building a car park behind the Pavilion and improving vehicle access
- Re-surfacing paths around the park perimeter and raising them to prevent flooding
- Creating a trim trail around the park, suitable for all ages
- Providing picnic tables and new benches
- Creating a sensory area and additional planting
- Adding a zip-slide or flying fox to the play area

The good news

We have a provisional offer of funding for £60,000 towards the cost of the project.

The challenge

One of the conditions of the funding is that we raise £6600 **before 30 September 2013**. We already have some money thanks to previous fundraising efforts but not enough to reach the target by the deadline.

How you can help

Having exhausted most sources of funding raising £40k for new play equipment, Abernethy Environmental Association urgently needs the financial support of local folk to help us reach our target. Can you make a donation? **Any contribution, no matter how small, will make a difference.**

e.g. if 250 households in Abernethy give £20 each before 30 Sep 2013, we will be able to go ahead and build a special community facility for future generations to enjoy.

Please take 5 minutes to donate today. If we do not raise £6600 we will not be able to claim the £60k grant and Powrie improvements will not go ahead. This is a unique opportunity, and our last chance.

Contributions can be made

- **Online** via Paypal or using credit card through our website <http://abernethyparksproject.webs.com/>
- **by cash or cheque** (payable to Abernethy Environmental Association)
Please deliver to Jill Young (Treasurer) at 37 Brandywell Road (tel 850087) or Jill Donnachie (Secretary) at 6 The Glebe (tel 850106)
- **In-kind** (if you have product, machinery or skills to share it could reduce our costs)

Please note that all donors will be publicly acknowledged unless they request otherwise.

We appreciate asking individuals for donations is not ideal but we are so very close to securing this large grant and have tried every other option we can think of to raise the necessary funds.

This is our last resort. Hopefully you can help. Thank you.



- Timing = disastrous
- Only £2.5k needed
- **Ask the community**
- Door drop
- Donate via Paypal/in person
- Deadline imminent
- **→ £4k**

Community Environment Challenge Fund and other funders

- Supporting local economy by using local tradespeople and materials.
- Benefits to the whole community across a range of age groups and abilities.
- The project would be completed within 12 months.
- Commitment to the long term maintenance of the project.



Today

- Phase 2 improvements have started
- Woodland used regularly by Forest School / cub & brownie packs / kids on bikes
- Sensory planting day for all community in March
- Abernethy Horticultural Society involvement



Next

- Completion April 2014
- Skate park?!



**KEEP
CALM
AND
FINGERS
CROSSED**