

Conditions for Planning Consent

1. Requirements for Bin Provision

1.1 Domestic Properties Serviced by the 3 Bin System

All domestic properties require an appropriate storage area for a minimum of 3 x 240 litre bins (1 for general waste, 1 for garden & food waste and 1 for dry mixed recyclates/paper) and suitable access/surface to wheel the bins from the storage area to the kerbside where they must be presented for collection.

Bin Dimensions

Capacity (litres)	Width(mm)	Height (mm)	Depth (mm)
240	580	1100	740

1.2 Flatted Properties

All flatted properties require a communal area to store one of the following bin options:

- 2 x 240 litre bins (one for general waste and one for dry mixed recycling)
- 1 x 240 litre bin for garden and food waste (where appropriate)
- a combination of larger bins to equate the same capacity as above

Bin Dimensions

Capacity (litres)	Width (mm)	Height (mm)	Depth (mm)
240	580	1100	740
1100	1270	1380	1000
1280	1280	1445	1000

It is preferable for residents (where space allows) to have their own individual 240 litre bins rather than using communal facilities.

1.3 Domestic Properties in Rural Area's

Council policy states that refuse collection vehicles will only provide kerbside refuse and recycling collections to properties situated on a private road if all of the following conditions are met :

1. the private road serves a settlement, or settlements, rather than sporadic individual properties (as a guide, a settlement is a grouping of six or more properties);
2. there is sufficient turning space for a refuse collection vehicle at the road end (i.e. a turning circle, t-junction or hammerhead), or if the vehicle can enter/exit the road by other safe means (as specified in point 3 below);
3. the condition of the road surface is acceptable for a refuse collection vehicle to access (as specified in point 4 below);
4. sufficient and safe access for the refuse collection vehicle is maintained - i.e. absence of overhanging branches / over grown bushes acceptable surface condition etc. (as specified in point 2 below)

5. the owner of the private road agrees to indemnify the Council (through a signed waiver) against any damage caused from reasonable use of the road by a refuse collection vehicle;
6. any bridges or other structures along the private road are certified by a competent person to be safe and meet Perth and Kinross Council health and safety requirements. It is the responsibility of the owner(s) of the road to demonstrate the safety of these structures;

If the properties can be accessed safely by service vehicles then condition 1.1 must be followed. If the properties cannot be accessed safely by service vehicles then provision must be made at the road end for the safe storage and servicing of the bin(s) in which case condition 1.2 must be followed.

2. Vehicle and Operative Access

Access and egress

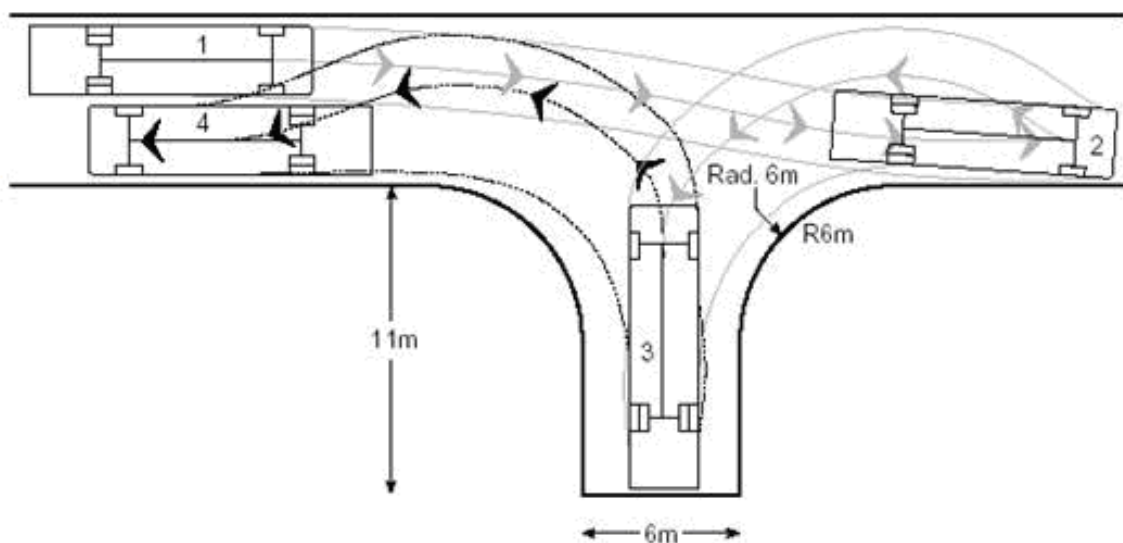
The following space requirements must be fulfilled for a refuse collection vehicle to service the site:

Height	4.5m
Width	2.75m (including mirrors)
Length – for reversing and turning	12 m
Length - for vehicle with container in emptying position	13 m
Area required for operatives to stand clear of bin whilst being lifted	3 m length x 3.5m width

3 Vehicle Turning Requirements

The turning circle (diameter) required for refuse collection vehicles is 24 meters.

**FTA Large rigid design vehicle
Side road stub**



4. Road Specifications

All vehicle access roads that the refuse collection vehicles will be required to use must be adopted by the Council and constructed to withstand a gross vehicle weight of 32 tonnes and axle loading of 11.5 tonnes. Manhole covers, gratings, cattle grids etc situated in the road must also be capable of withstanding these loads.

The road and pavement from the bin collection point to the refuse collection vehicle must be at maximum 10 metres and a hard standing surface. It must have a level gradient and a smooth surface; use dropped kerbs where appropriate.

5. Recycling Facilities

5.1 New Housing Schemes

For new housing developments of 50 houses or above, the developer (in conjunction with the area Community Waste Adviser) should incorporate a suitable location(s) for the provision of recycling facilities to compliment the existing kerbside recycling services offered in the area.

Smaller developments of 10 houses and over should be considered for neighbourhood glass points. This would consist of 3 units for colour separated glass containing a 240 litre wheeled bin. The dimensions of each unit are 1290mm high x 675 mm wide x 810 mm deep.

Appendix 1

Planning Advice Note 63 indicates that developers should be encouraged to provide space in their proposed developments to accommodate provision within the premises for facilities to separate and store different types of waste at source. The Scottish Government considers that there may be greater scope to promote waste prevention and recycling during both the construction phase and the lifetime of the new development.

This Planning Review Process must be followed to ensure that all aspects of waste management are included before planning consent is granted – this should include storage, access/egress and road specifications for both waste and recyclates.

Should planning consent be granted which does not meet the aforementioned conditions, Perth & Kinross Council Waste Services may be unable to provide a complete service.