

PERTH AND KINROSS COUNCIL
EDUCATION AND CHILDREN'S SERVICES
OPTIONS APPRAISAL REPORT
BALHOUSIE PRIMARY SCHOOL AND NORTH MUIRTON PRIMARY SCHOOL



1. Introduction

The Council's Corporate Plan identifies the vision of *'a confident and ambitious Perth and Kinross with a strong identity and clear outcomes that everyone works together to achieve. Our area will be vibrant and successful; a safe secure and healthy environment; and a place where people and communities are nurtured and supported'*.

This strategic approach embraces the vision for our area, our communities and our people as outlined in the Corporate Plan. Our key service priorities support the delivery of our commitments in the Community Planning Partnership's Single Outcome Agreement and Corporate Plan, helping Education and Children's Services to focus on the local outcomes that will achieve meaningful improvements for the area, our local communities and our citizens.

Councils, as an Education Authority, have a statutory duty in terms of the Education (Scotland) Act 1980 to make adequate and efficient provision of school education across their entire area for the current school population and future pattern of demand.

Councils also have a statutory responsibility in terms of the Local Government in Scotland Act 2003 to achieve best value.

The school estate is a significant and valuable asset to the communities of Perth and Kinross. From 2017 to 2023, the Council will invest £141m in the school estate, including a number of new or replacement primary schools and a substantial upgrade programme for secondary schools. In addition the Scottish Government is funding a new £32.5m secondary school at Bertha Park.

The School Estate Strategy ([Report No. 12/370 refers](#)) sets out the Council's aspirations for our schools, and in particular the high value we place on learning, through our vision for well designed, maintained and managed schools. The [School Estate Management Plan](#) details how we plan to deliver the strategy.

It is important, in light of the significant investment and cost associated with the school estate, that it is managed in an efficient and effective manner, and that the priorities which are addressed meet the wider strategic objectives of the Council and the needs of our communities.

2. Background

2.1 Transformation

There are significant challenges for managing the school estate over the coming years. These include changing demographics including population growth, and house building in certain locations and reduction in population in other areas. This

has led to an 'imbalance' in occupation of the school estate, with roll pressures in some urban schools and under-occupation in some rural schools.

There is also ongoing deterioration in building infrastructure, pressure on planned maintenance budgets, increasing revenue costs and the extension to Early Learning and Childcare (ELC) provision which are challenging in terms of funding and maintenance of the school estate.

The Council's Transformation Strategy 2015-2020 'Building Ambition' and Organisational Development Framework were approved by Council on 1 July 2015 ([Report No. 15/292](#) refers). Together they detail how Perth and Kinross Council will deliver transformation over the next five years. Accompanying the strategy is a programme of major reviews which are considered to be key drivers and enablers of transformation across the organisation.

As part of the Council's Transformation Programme 2015-2020, a review of the school estate was approved. On 24 August 2016, the Council approved the report "Transformation – School Estate Review" ([Report 16/347](#) refers). This report proposed principles to be used to prioritise investment and as a basis for a high level review of the school estate. The purpose of the transformation review is to support the delivery of better outcomes for all of our young people through more effective use and management of the school estate.

2.2 Basis of review

The principles approved as a basis for the review are;

- (i) Every school should be rated as A or B i.e. at least satisfactory for condition and suitability;
- (ii) Schools should have an occupancy rate where possible greater than 60% of the capacity and ideally should be operating at between 80% and 100% capacity and
- (iii) Life expired buildings within the school estate should be prioritised for replacement.

2.3 Options Appraisal

This report is the options appraisal for Balhousie Primary School and North Muirton Primary School. This will be submitted to Lifelong Learning Committee of the Council which will determine whether any statutory consultation will proceed.

2.4 Inclusion of Balhousie Primary School and North Muirton Primary School

On 2 November 2016, the Council approved the report "Securing the Future of the School Estate – Next Steps" ([Report 16/485](#) refers). This report detailed the outcome of the high level review and proposed to proceed with further work on the schools which did not meet the suitability, condition or occupancy principles.

In this report, it was agreed that an options appraisal should be carried out on Balhousie Primary School due to the condition and suitability rating of the school. The occupancy of the school is also low.

The school had a pupil roll of 113 (Census¹ 2015) and an approved capacity of 224 giving an occupancy of 50%. The school was also rated suitability 'C' and condition 'C' at this time.

North Muirton Primary School was included in the review due to the condition of the school being rated as 'C'.

2.5 Current Position

Balhousesie Primary School has a roll of 101 (Census 2017) with an occupancy of 45%. North Muirton Primary School has a roll of 228 (Census 2017) with an occupancy of 79%.

North Muirton Primary School remains Condition 'C', with a recommendation that it should be replaced. Balhousesie Primary School remains Condition 'C' and Suitability 'C' with significant spend being required to improve its condition rating and limitations to what can be achieved to improve suitability.

The options appraisals for Balhousesie Primary School and North Muirton Primary School have been combined because there is funding in the Composite Capital Budget 2017/23 for a replacement primary school in the 'North' of Perth.

The options appraisal considers whether there are opportunities for both schools, which have adjoining boundaries, to benefit jointly or separately from the funding in the capital programme.

3. Legislation

The Schools (Consultation) (Scotland) Act 2010 sets out a strong, accountable statutory consultation process that local authorities must apply to their handling of all proposals for school closures and other major changes to schools. These consultation processes are expected to be robust, open, transparent and fair, and seen to be so. They are also expected to be consistent across Scotland.

The Education (Scotland) Act 2016 amends the Standards in Scotland's Schools Act 2000 by adding in new duties on education authorities to address inequality of outcome caused by socio economic disadvantage. These duties apply in different ways to both Scottish Ministers and education authorities.

Where the education authority is making or implementing strategic decisions about school education, it is required to have due regard to the need to carry out its functions in a way which is designed to reduce inequalities of outcome. This is particularly directed in the Act towards pupils who experience those inequalities through socio-economic disadvantage, but there is also a power to extend the range of pupils who are covered by this duty.

In addition, the Community Empowerment (Scotland) Act 2015 sets out a new right for community organisations to request the transfer of local assets into local

¹ An annual pupil census in publicly funded schools in Scotland is carried out every year for publication by the Scottish Government. This usually takes place in September. Pupil roll forms part of the census

community ownership/management. Public bodies including Councils must consider such requests and respond within a reasonable timescale to them.

3.1 Statutory Guidance

The Statutory Guidance on the Schools Consultation (Scotland) Act 2010 promotes informal consultation or “pre consultation” with communities regarding a proposal before a formal 2010 Act proposal paper is formulated. The Statutory Guidance recommends ‘early engagement with the local community’ with a view to:

- ‘establishing possible alternatives’;
- ‘information gathering and sharing in advance of a statutory consultation’;
- ‘engaging and empowering communities to understand and help shape the proposals that affect them’.

Although pre-consultation is a particular feature of the process where the Council is considering the future of rural schools, the Council has decided to use a similar approach of early community engagement to inform options appraisals for all schools which are part of the review.

3.2 Community Engagement and Feedback

Details of the community engagement process and feedback are contained in Appendix 1 and are also referred to in relation to individual options. The feedback which is detailed in Appendix 1 has been issued to the Parent Council, Headteacher, Community Councils and published on the Council website.

There were a range of views expressed during the community engagement process on the future of Balhousie Primary School and North Muirton Primary School. The key themes which emerged are as follows:

Balhousie Primary School

- Parents and the wider community do not want to see the school closed;
- A large proportion of families with pupils attending the school do not have English as their first language. The school plays a vital link for these families to engage with the local community;
- There are important links between the school and the local community and this would be lost if the school closed;
- The school building is an important part of Perth’s heritage;
- The school building requires work to be carried out on it;
- Smaller class sizes at Balhousie Primary School are preferred for learning and teaching. There was a perception that class sizes are larger in other schools.

North Muirton Primary School

- Parents are looking forward to a new school being built. The preference would be that this is built on the existing school site.

- Careful consideration needs to be given to support the integration of both schools if this was the option taken forward.
- Consideration should be given to vehicle movements and parking should both schools be combined at North Muirton Primary School.
- It makes financial sense to have one school building accommodating both sets of pupils.

4. Pupils and Families² - Balhousie Primary School

4.1 Where they live

66% of pupils (69 in total) who attend Balhousie Primary School live within the catchment area.

The remaining pupil roll is made up of pupils who live outside of the catchment. The catchment areas of these pupils include;

- Tulloch Primary School
- Goodlyburn Primary School
- North Muirton Primary School

4.2 Language

The main spoken language of pupils attending the school is as follows;

- 51% English
- 26% Polish (62% are fluent in English language)
- 12% Bulgarian (83% are fluent in English language)

The remaining pupils attending the school have a number of different languages as their first language including Slovak, Spanish, Romanian, Scots, Telugu, Malayalam and Urdu.

Altogether, there are 10 pupils who are not fluent in English language.

4.3 Socio Economic Factors

The Council uses the Scottish Index of Multiple Deprivation (SIMD) and ACORN data to understand levels of deprivation across Perth and Kinross and also in individual schools.

Further information on SIMD and ACORN is detailed in Appendix 2.

SIMD quintile 1 represents the most deprived areas.

² The information is based on data at Census 2017. An annual pupil census in publicly funded schools in Scotland is carried out every year for publication by the Scottish Government. This usually takes place in September. Pupil roll forms part of the census

38% of the pupils that attend Balhousie Primary School live in areas which are in Scottish Index of Multiple Deprivation (SIMD) quintile 1. This compares against an average of 7% in SIMD quintile 1 across Perth and Kinross.

ACORN 5 represents the most deprived areas.

59% of pupils attending Balhousie Primary School fall into category 5. This compares against an average of 13% across Perth and Kinross.

Balhousie Primary School is in receipt of Pupil Equity Funding (PEF). PEF is being provided as part of the £750m Attainment Scotland Fund which will be invested over the current Parliamentary term to tackle the poverty related attainment gap.

A significant number of pupils attending Balhousie Primary School live in households that are categorised as deprived based on ACORN and SIMD. These socio economic factors must be considered in determining options for the school, in line with the requirements of the Education (Scotland) Act 2016 to reduce inequality of outcome.

North Muirton Primary School

4.4 Where they live

74% of pupils that attend North Muirton Primary School live within the catchment area.

The remaining pupil roll is made up of pupils who live outside of the catchment. The catchment areas of these pupils include;

- Balhousie Primary School
- Goodlyburn Primary School

4.5 Language

The main spoken language of pupils attending the school is as follows;

- 94% English
- 4% Polish (63% are competent in English language)

The remaining pupils attending the school have a number of different languages as their first language including Romanian, Scots, Urdu and Muslim.

4.6 Socio Economic Factors

The Council uses the Scottish Index of Multiple Deprivation (SIMD) and ACORN data to understand levels of deprivation across Perth and Kinross and also in individual schools.

Further information on SIMD and ACORN is detailed in Appendix 2

SIMD quintile 1 represents the most deprived areas

11% of the pupils that attend North Muirton Primary School live in areas which are in Scottish Index of Multiple Deprivation (SIMD) quintile 1. This compares against an average of 7% in SIMD quintile 1 across Perth and Kinross.

ACORN 5 represents the most deprived areas.

17% of pupils attending North Muirton Primary School fall into category 5. This compares against an average of 13% across Perth and Kinross.

North Muirton Primary School is in receipt of Pupil Equity Funding (PEF). PEF is being provided as part of the £750m Attainment Scotland Fund which will be invested over the current Parliamentary term to tackle the poverty related attainment gap.

Pupils attending North Muirton Primary School live in areas which are more deprived than the average in Perth and Kinross based on ACORN and SIMD. These socio economic factors must be considered in determining options for the school, in line with the requirements of the Education (Scotland) Act 2016 to reduce inequality of outcome.

5. Pupil Numbers

The methodology used for pupil projections allows Education and Children's Services to project a detailed year by year analysis for each school catchment.

The methodology applied for projecting future P1 intakes uses aggregated General Practitioner (GP) registration data. This anonymised data, sourced from the NHS, reflects children registered with a GP within specific school catchment areas based on address.

P1 pupils included within the data received from the NHS do not always decide to attend their catchment school. This is primarily because parents make placing requests to other schools or elect to send their child to a denominational school.

As a result of these movements the P1 data is adjusted taking into consideration the movement of pupils in previous years. The adjusted data is the primary source of information for forward planning.

The projected school rolls also reflect house building, through referring to the Housing Land Audit (HLA)³.

It should be noted that due to the fluid nature of pupil movements within the estate, for a number of different reasons, predicting future years' school rolls will not be exact. It is however accurate enough to provide valuable information on forward planning for the school estate.

5.1 Balhousie Primary School

School Roll Pupil Numbers – Historic/Current (Based on Census)

	2010	2011	2012	2013	2014	2015	2016	2017
Balhousie Primary School Capacity	125	125	224	224	224	224	224	224
Balhousie Primary School Roll	113	103	105	109	113	113	113	101

Table 1: Balhousie Primary School - School Roll Pupil Numbers – Historic & Current⁴

Projected School Roll (Adjusted P1 data - including house building)

There is planned house building for the Balhousie Primary School catchment area contained within the Local Development Plan (LDP) and Housing Land Audit (HLA) 2016.

There are over 200 houses currently programmed within the HLA 2016 up to 2028 within the Balhousie Primary School catchment area. Developments include housing at Ainslie Place and Atholl Street. 50 houses are also planned for Stormont Street but there is no current timeline.

	2018/19	2019/20	2020/21	2021/22
Balhousie Primary School Capacity	224	224	224	224
Balhousie Primary School Roll	108	112	112	114
Potential pupils from house building	9	8	8	8
Balhousie Primary School Roll with house	117	128	134	141

³ The HLA is produced by Planning on an annual basis and details potential house build out rates across Perth and Kinross.

⁴ Note that the capacity of the school was increased in 2012 when a number of PKC services moved out of the building

building				
----------	--	--	--	--

Table 2: Balhousie Primary School – Projected Pupil Numbers Adjusted

The figures from house building assume that all pupils from new houses will attend Balhousie Primary School and that the school roll will have an additional 33 pupils over four years. It is considered unlikely that all new pupils from the house building will attend Balhousie Primary School based on current trends.

5.2 North Muirton Primary School

School Roll Pupil Numbers – Historic Data (Based on Census)

	2010	2011	2012	2013	2014	2015	2016	2017
North Muirton Primary School Capacity	290	290	290	290	290	290	290	290
North Muirton Primary School Roll	245	237	224	231	238	233	227	228

Table 3: North Muirton Primary School – Pupil Numbers Historic and Current

There is no planned house building for the North Muirton Primary School catchment area contained within the LDP and Housing Land Audit (HLA) 2016.

Projected School Roll (Adjusted P1 Data)

	2018/19	2019/20	2020/21	2021/22
North Muirton Primary School Capacity	290	290	290	290
North Muirton Primary School Roll	234	236	241	239

Table 4: North Muirton Primary School – Future School Roll

5.3 Catchment Pupils

At Census 2017 there were over 200 primary school age pupils living within the Balhousie Primary School catchment area attending other schools. 135 of those pupils attend St Johns Primary School, which is a denominational school in close proximity to Balhousie Primary School, forming part of the North Inch Campus.

At Census 2017, there were over 30 pupils attending the school living outwith the Balhousie Primary School catchment.

Parents were asked why they choose Balhousie Primary School. Responses were as follows;

- *“Smaller class sizes”*
- *“Location”*
- *“Links with the community to benefit their social skills.”*
- *“New builds inferior quality.”*

Questions were asked at the drop-in session to establish the perception of the community as to why a large proportion of catchment pupils did not attend Balhousie Primary School. Responses are as follows;

- *“Lost children to the new St Johns School. But not everyone can do big schools.”*
- *“If the school was upgraded I think more people would send their children to their catchment.”*
- *“School facilities need to be modernised.”*
- *“Poor reputation in the neighbourhood. Resident Muirton Place. Issues: Behaviour, resources, concrete play area. PKC needs to support school more.”*
- *“A lot of children do not come here as they want St Johns due to religion.”*

At Census 2017, there were over 80 primary school age pupils living within the North Muirton Primary School catchment area who attended other schools. There were over 50 pupils who attended the school from out with the North Muirton Primary School catchment.

5.4 Nursery Pupils

Nursery pupils are not included in school capacities or school rolls.

Balhousie Primary School has a nursery provision which currently offers both morning and afternoon sessions. Each session provides for a maximum of 40 children from aged 2 until they attend school. There is to be no more than 10 children aged 2 in each nursery session. There are 30 nursery children (Census 2017) registered at the school. 4 of these children are two year olds.

North Muirton Primary School has a nursery provision which currently offers both morning and afternoon sessions. Each session provides for a maximum of 55 children from aged 2 until they attend school. There is to be no more than 10 children aged 2 in each nursery session. There are 53 nursery children (Census 2017) registered at the school. 10 of these children are two year olds.

5.5 Class Sizes

The class composition in recent years at both schools is as follows;

Balhousie Primary School

Class	2015/ 2016		Class	2016/ 2017		Class	2017/ 2018
P1	17		P1	21		P1/2	21
P2	18		P2	14		P2/3	22
P3	16		P3/4	19		P4	16
P3/4	19		P4	19		P5	20
P5/6	25		P5/6	19		P6/7	22
P6/7	18		P6/7	21			

North Muirton Primary School

Class	2015/ 2016 ⁵		Class	2016/ 2017 ⁴		Class	2017/ 2018 ⁴
P1/2	21		P1	22		P1/2	22
P1/2	20		P1/2	23		P1/2	23
P2	20		P2	22		P2	21
P3	21		P3	19		P3	24
P3/4	22		P3/4	20		P3/4	22
P4/5	24		P4/5	23		P4/5	25
P5/6	22		P5	23		P5	22
P6	24		P6	22		P6	18
P7	22		P6/7	19		P6/7	20
P7	21		P7	19		P7	19

The average class size in Perth and Kinross primary schools, at Census 2017, is 23 pupils. The maximum class size is for composite classes is 25 pupils. The maximum class size for P1 is 25, P2 and P3 is 30 and P4-P7 is 33.

6. Financial Information (Staff, Buildings, Transport and Other)

The revenue (or running) cost for financial year 2017/2018 for operating Balhousie Primary School is £547,704.

⁵ Excludes ASN pupils

The revenue (or running) cost for financial year 2017/18 for operating North Muirton Primary School is £852,561. Refer to Appendix 8 for detailed financial information.

7 Building Information - Balhousie Primary School

7.1 Overview

Balhousie Primary School is located to the north west of the town centre. The site of Balhousie Primary School is owned by Perth and Kinross Council.

The original two storey building is estimated to have been constructed in 1908 and parts of the building are Grade B listed. The two storey, red sandstone main building provides approximately 1,905 m² of accommodation.

The original Grade B Listed Edwardian renaissance building is of traditional construction weathered by pitched slate roofs and finished with red sandstone elevations with cast iron rainwater goods. The original single storey structure to the south west of the school is formed from metal framed mono pitched bitumen covered roof.

Staff, pupil and disabled toilet accommodation is provided largely around the stairwells of the building. The main hall is located within the centre of the building with an open mezzanine corridor serving the first floor classrooms above. Kitchen facilities are located to the west end of the building within the dining hall.

In addition to the main hall, kitchen and dining facilities the original main building accommodates a nursery, classrooms, learning resource rooms and office accommodation.

A plan of the school building can be found at Appendix 5.

7.2 Suitability

Suitability is an assessment of the school as a whole, its buildings and its grounds and the impact these have on learning and teaching, leisure and social activities and the health and wellbeing of all users.

Schools are rated on a scale of A to D for suitability. See Appendix 4 for the definition of the ratings.

Balhousie Primary School is rated C for suitability. The definition of this rating is 'Poor – Showing major problems and/or not operating optimally (the schools buildings and grounds impede the delivery of activities that are needed for children and communities in the school)'

Out of the key factors that are considered within the suitability survey the external social areas and accessibility was rated as D.

An overview of the suitability is given in Appendix 6.

7.3 Condition

Property condition is graded relative to the nature, construction and age of individual buildings and does not necessarily reflect their condition in comparative terms to a modern new building constructed to current standards and levels of performance or sustainability.

Schools are rated on a scale of A to D for condition. See Appendix 4 for the definition of the ratings.

Balhousie Primary School is rated C for condition. This rating is described as 'Poor – showing major defects and/or not operating adequately.'

Visual condition and structural surveys were undertaken on behalf of Perth and Kinross Council on Balhousie Primary School in order to establish what works would be required to improve the condition rating at both schools.

The following paragraphs provide an overview of the works that have been identified during a visual survey of the school.

7.4 External and Internal Fabric

The building is suffering from significant deterioration to the external and internal fabric. Externally work is required to prevent and resolve issues as a result of water ingress and further deterioration to stone work. A programme of repair/replacement to windows is also required.

Internally, particularly in the upper level classrooms and stairwells, further investigative work is required to establish a full programme of repairs including accessibility compliance and resolving issues with dampness and its effect on internal finishes.

7.5 Mechanical and Electrical

The existing boilers, lighting and fire alarm systems are at the end of their serviceable life and require replacement in the short term.

7.6 Financial Impact

A programme of works has been developed and costed for Balhousie Primary School as follows based on the visual surveys.

Timescale	Cost (£m)
1-2 years	1.15
2-5 years	0.55
5+ years	1.15
	2.85

These costs are based on a long term plan for the school. If a decision was made that the school were to close in the short to medium term, only essential works would be undertaken. These costs should be significantly less than the costs in table above.

7.7 Cost Exclusions

This is not the complete cost of upgrading Balhousie Primary School as there were a number of areas which are not included because disruptive surveys would be required. These include: high level access to the roof; access to the internal roof space; wet and dry rot surveys, asbestos surveys and intrusive wall surveys.

To carry out this level of survey would require the school to be decanted for a period of time. The expectation would be that the works would then continue immediately afterwards rather than disrupt the pupils learning and to provide best value.

In considering the areas which have not been included, estimates for a full upgrade of the building have been made at between £4.8m and £5.7m. In addition there would be decant costs of approximately £600,000.

This work and the estimates above do not include the following areas;

- No improvement to the learning and teaching environment
- No or minimal improvements to accessibility
- No improvement to acoustic performance of building
- No improvement to building fabric to reduce energy bills
- No renewal of old finishes that are not damaged
- No works to the kitchen
- No significant improvements to existing playground

7.8 Option - New Build Balhousie Primary School

Consideration was given to a new build school for Balhousie Primary School. This has been discounted for the following reasons:

- parts of the existing school are listed and it would therefore be highly unlikely that it would be able to be demolished;
- there is insufficient ground on the school site for a new school to be built, and if there was, there would be no outdoor space because of the existence of the original listed building;
- there is no other available land within close proximity to the school.

7.9 Summary

It is not possible to replace Balhousie Primary School on the existing school site or in close proximity to the school. The school requires refurbishment at a cost of between approximately £4.8m and £5.7m. Revenue of approximately £600,000, will be

required for a decant. These works are not likely to improve the suitability of the school to any degree and there would be limited changes to the teaching and learning environment.

Given the level of potential disruption to undertake the repair works, the fact that the building could only be brought to condition 'B' with no improvement in the learning environment and potentially significant works may still be required after a full refurbishment, it is not considered best value to refurbish Balhousie Primary School.

8. Building Information – North Muirton Primary School

8.1 Overview

North Muirton Primary School is located to the north west of the town centre approximately 1.2 miles from Balhousie Primary School. The building is a single storey design estimated to have been constructed in 1977. The single storey building provides approximately 2,319 m² of accommodation. In addition to the main building, there is a nursery to the south of the main school of the same construction.

The main school building provides semi open plan learning and teaching spaces including 11 classrooms, hall, dining, kitchen, toilets and office accommodation.

A plan of the school building can be found at Appendix 3.

8.2 Suitability

Suitability is an assessment of the school as a whole, its buildings and its grounds and the impact these have on learning and teaching, leisure and social activities and the health and wellbeing of all users.

Schools are rated on a scale of A to D for suitability. Appendix 4 has a definition of the ratings.

North Muirton Primary School is rated B for suitability. This is defined as 'Satisfactory – Performing well but with minor problems (the school buildings and grounds generally support the delivery of services to children and communities)'

Out of the key factors that are considered within the suitability survey the functionality and accessibility of the external social areas were rated as D.

8.3 Condition

The following paragraphs provide an overview of the works that have been identified during a visual survey of the school.

8.4 External and Internal Fabric

The building is suffering from significant deterioration to the external and internal fabric. Externally work is required to prevent and resolve issues as a result of water ingress to windows and internally to ceilings and wall finishes.

The roughcasting and roof are in poor condition and require repairs or full replacement.

The re-routing or replacement of rainwater goods is also required to benefit the building in the long term.

8.5 Mechanical and Electrical

All mechanical and electrical items are considered as requiring replacement in the medium to long term, however in the short term an element of ongoing maintenance will be required.

The lighting, mechanical ventilation to toilets, fire alarm and installation or cooling to the IT room and an entire building re-wire will be required within the next 5 years.

8.6 Financial Impact

The value of works identified for the building has been developed and grouped into phasing bands. These are;

Timescale	Cost (£m)
1-2 years (Short Term)	0.74
2-5 years (Medium Term)	0.52
5+ years (Long Term)	1.10
	2.40

A decant period of between 4-6 months would be required in order to carry out the works identified for the short term.

8.7 Cost exclusions

This is not the complete cost of upgrading North Muirton Primary School as there were a number of areas which are not included because further investigations are required to establish the exact extent of works. These include investigations of: roof substrate condition, rot survey, asbestos survey, structural assessment and repairs to resolve cracking issues and internal dampness and effect on wall finishes.

It should be noted that the costs detailed above only include allowances for repairs of known items, investigative costs and estimates of remedial works.

There has been no allowance for complete redecoration following all investigations or other works that may be identified.

It should be noted that works would only bring the building up to a condition rating 'B' Satisfactory – performing adequately but showing minor deterioration.

This work and the estimates above do not include the following areas;

- No building layout changes or improvements;
- No improvement to building fabric to reduce energy bills;
- No improvement to accessibility;
- Renewing old for new finishes that are not damaged;
- No works to the kitchen;
- No significant improvements to existing playground

8.8 Summary

In addition to the £2.4 million identified to undertake the known works a sum of between £1.2 and £2 million should be allowed for in order to allow for works which would only be identified through more investigations. These additional costs could be required for asbestos removal, damp and rot, roughcast/render repairs, windows and structural cracking.

It is anticipated that a decant of the building would be required for approximately 15 months with an anticipated cost for this element in the region of £1.2 million if a full refurbishment progressed.

Therefore, a total cost of between £4.8 and £5.6 million would be required for a full refurbishment. This cost is for the refurbishment of the school and rectification of known defects at the time of the works. This remains a 40 year old school with the potential risk that further building elements not replaced (e.g. brickwork, plasterwork, steelwork, concrete could become defective, resulting in additional works in the future, the scope of which at this stage cannot be predicted or known).

Given the level of potential disruption to undertake the repair works, the fact that the building could only be brought to condition 'B' with no improvement in the learning environment and potentially significant works may still be required after a full refurbishment, a new build North Muirton Primary School is recommended.

8.9 School Environment - New Build Schools

School planning and design can play an important role in enhancing teaching and learning outcomes by creating better built environments. When designing a new school the pupils' learning journey is at the heart of the design. The interaction between the Nursery and P1 Pupils is facilitated by siting their classrooms appropriately and providing access to shared indoor and outdoor play. Vertical learning between all age groups is further enhanced by considering room adjacencies at the design stage.

The classrooms are designed to provide a bright and modern environment with built in teaching walls providing ample storage for classroom resources and space for interactive teaching.

Flexibility and adaptability ensure that each space is used efficiently and effectively and learners have opportunities to learn in different environments. Break-out spaces enable pupils to work independently in an informal setting whilst allowing passive supervision by the teacher. Small group rooms can be used flexibly for project work or supported learning.

The requirements of pupils with additional support needs are addressed through the inclusion of spaces such as Nurture, Snoezlean and Sensory rooms. Specialist design services are employed to ensure these purpose built rooms include suitable resources and equipment.

Acoustic performance, ventilation, floor finishes, lighting, decoration and furniture are all carefully considered during design development to make sure the environment is comfortable, not over stimulating and conducive to all activities being undertaken within the school.

Outdoor learning is facilitated through easy access to outdoor spaces directly from the classroom where possible.

The overall concept of the design process is to provide an inclusive, safe, inspiring environment which promotes learning for all.

9. Options for Consideration

A number of options are considered for the future of Balhousie Primary School and North Muirton Primary School as part of the options appraisal. These options were developed on the basis that North Muirton Primary School needs replaced and that it is not possible to build a new Balhousie Primary School in close proximity to the current school:

1. Both schools remain open – consider building a new school at North Muirton Primary School and improve condition and suitability at Balhousie Primary School
2. Consider closing Balhousie Primary School and moving pupils to a larger new build North Muirton Primary School
3. Balhousie Primary School remains open – expand the provision of other PKC services utilising space within the school for these services and improve condition and suitability. Consider building a new North Muirton Primary School

9.1 Option 1 - Both schools remain open – consider building a new school at North Muirton Primary School and improve condition and suitability at Balhousie Primary School

Balhousie Primary School - Community Feedback

Comments received on this option from those attending the Balhousie Primary School drop-in session included;

- ***“Investing in improving the conditions and also the provision to support learning and learners would make the school more attractive to parents who currently choose other schools.”***
- ***“I prefer to keep Balhousie School open because: is small and my child feels safe and happy here. Has good scores in education. Nice teachers and staff work in Balhousie.”***
- ***“Option 1 – my son attends this school and my daughter spent all her primary years here. It’s a fantastic school, it definitely needs upgrading – classrooms etc. Great community school!! Multi-cultural”***
- ***“I think Balhousie Primary should stay open because it’s a great school and its part of the community.”***

North Muirton Primary School – Community Feedback

Comments received on this option from those attending the North Muirton Primary School drop-in session included;

- ***“Great idea – if on the present site.”***
- ***“The current building is no longer fit for purpose.”***
- ***“North Muirton needs refurbished, no issues with existing site. Concerned with issues regarding the layout of the gym hall and open plan design. Like to see bigger nursery.”***

Pupil Impact

The Balhousie Primary School roll is expected to remain roughly the same in future years unless the majority of catchment pupils from house building attend the school. Even if all pupils from house building attended the school, it would still be under occupied in relation to the approved capacity.

There are a large number of catchment pupils that do not attend the school and it is not anticipated that this is likely to change. Therefore the pupil numbers will not increase significantly.

If works are undertaken to improve the condition of the school the school would have to close for at least 18 months with the pupils being relocated/decanted.

Once works have been carried out the school building would provide a better general environment however it would not be a modern teaching environment. The work detailed earlier in the report is focused on improving the fabric of the building. Other works which could provide modern learning spaces, with good acoustics, good ventilation, access to outdoor learning from the class and a more accessible building would be very difficult and costly to achieve.

When a new school is built at North Muirton Primary School, it is anticipated that pupils would remain in the existing school until the new school has been built.

A new school would provide pupils with a well-designed, spacious, bright and modern teaching environment. Children with additional support needs would have purpose built facilities which would provide support for individual needs. The new nursery will form part of the new building, allowing integration with primary classes.

Financial Impact

There are annual running costs of £547,704 associated with Balhousie Primary School and £852,561 associated with North Muirton Primary School for staff, security, domestic rates, water and sewerage, maintenance, grounds maintenance and energy.

The cost for a new build North Muirton Primary School with the current capacity is approximately £11.7 million. This cost is based on recent school building projects and may change when detailed design work takes place. The cost assumes the building is completed within 3 years for inflation purposes.

The cost to improve the condition rating, but not the teaching and learning environment, associated with Balhousie Primary School is between £4.8 and £5.7 million. There would also be decant costs of approximately £600,000, which would be required while the work was carried out on the building.

The total cost for a new build North Muirton Primary School and to improve the condition and suitability rating associated with Balhousie Primary School is between £16.5 million and £17.4 million.

There is £16 million funding within the capital programme for a new primary school in North Perth.

There is potentially a funding shortfall of between £0.5m and £1.4m to build a new school at North Muirton and refurbish Balhousie Primary School.

Assessment of Option 1

North Muirton Primary School is uneconomic to refurbish and maintain and replacement of the school should be planned. This option proposes that North Muirton Primary School will be replaced on the site of the existing school.

There is funding of £16 million available in the capital programme for a replacement primary school in North Perth. £11.7m will be required for the replacement of North Muirton Primary School which would accommodate the current capacity, albeit with purpose built Additional Support Needs (ASN) and nursery accommodation.

This option proposes that Balhousie Primary School is refurbished.

This option was favoured by those attending the community drop-in sessions and completing the online questionnaires for Balhousie Primary School.

Balhousie Primary School is currently under occupied, and it is unlikely that the roll will increase significantly in the future. The condition of the school is such that major refurbishment of Balhousie Primary School is required if the school is to remain open. It is estimated that the cost of refurbishing the school will be in the region of £4.8 - £5.7 million. There would also be ongoing maintenance costs associated with the upkeep of an older building.

Although the condition of the school would be improved, there would be limited improvement to the suitability and to the learning and teaching environment, and no upgrading across other areas highlighted in section 7.3.

It is considered that it does not represent best value to commit this level of funding to refurbish Balhousie Primary School when the school is under occupied and where the roll is unlikely to increase greatly in the future. Even if additional funding were committed, over and above the £5.7m, to attempt to improve the suitability, it is unlikely that the learning and teaching environment can be fully modernised.

The available capital funding is insufficient to build a new school at North Muirton and refurbish Balhousie Primary School. Even if there was sufficient funding, for the reasons outlined above, it is not considered that replacing North Muirton Primary School while also refurbishing Balhousie Primary School would represent best value.

This is not considered a reasonable option in terms of best value as the expenditure required to refurbish the school would not achieve a significant improvement in the learning and teaching environment at Balhousie Primary School.

9.2 Option 2 - Consider closing Balhousie Primary School and moving pupils to a larger new build North Muirton Primary School

Balhousie Primary School - Community Feedback

Comments received on this option from those attending the Balhousie Primary School drop-in session included;

- ***“Moving kids into a larger building would affect kids hugely as they know all teachers and pupils inside out within the school they attend at the moment. Local kids in the surrounding area have enjoyed the pleasure of Balhousie Primary School for a lot of years and hopefully in the upcoming years.”***
- ***“Don’t destroy the heart of the community.”***
- ***“As a local resident it would be helpful to know how P&K Council would develop the site. Would it be sold for housing – a fairly unimaginative but profitable solution but not enhancing the potential for community?”***
- ***“I am resident at Grove Care Home. Would miss coming to this school to visit pupils and vice-versa.”***

North Muirton Primary School – Community Feedback

Comments received on this option from those attending the North Muirton Primary School drop-in session included;

- ***“Could work well, giving Balhousie pupils a wider range of friends and classmates?”***
- ***“A large new build school is great as it could also include more classroom spaces for pupils that need more support and it would also bring communities together merging the schools.”***
- ***“It would make monetary sense to combine both schools under North Muirton”***

Comments received that did not favour this option include;

- ***“I like idea of a small community school as teachers know parents and pupils better and have a better 1:1 relationship.”***
- ***“I think it would be very silly to close Balhousie, as I’m sure many within Perth. You don’t want to push schools and teachers to the breaking point and rather than improve children’s learning you’ll be hampering it.”***

Pupil Impact

A new school would be built at North Muirton Primary School with a potential approved capacity of 434 in order to accommodate the combined pupil roll for both the existing North Muirton Primary School and Balhousie Primary School. The new build school would also have specialist provision for children with Additional Support Needs (ASN) and accommodate the existing nursery pupils from North Muirton Primary School and Balhousie Primary School. This proposal is for a school of the same size as the new Tulloch Primary School.

The following table details the projected school roll at a new North Muirton Primary School should existing Balhousie Primary School pupils move to the school. Figures include pupils projected from house building contained within the Balhousie Primary School catchment;

	2018/2019	2019/2020	2020/2021	2021/22
New North Muirton Primary School Capacity	434	434	434	434
New North Muirton Primary School Roll (including Balhousie Primary School)	351	364	375	380

It should be noted that the projected roll shown in the table above does not include all pupils currently living in both catchment areas but the pupils who are projected to attend both schools in the future based on adding pupil numbers together. It does include pupil numbers from house building in the Balhousie Primary School catchment area. The new school will not be completed before 2021/22.

The new school would be designed with GP space which could be used as additional classroom space should any catchment pupils, who currently attend other primary schools, choose to attend the new school when it is built. This could give the school a potential capacity of 500 pupils. It should be noted that the school will be designed in such a way that it can be extended in future years if required.

The new school at North Muirton will be built on the same site as North Muirton Primary School. Access to outdoor play space will be limited during the period of the build. Balhousie Primary School pupils would remain at Balhousie Primary School until the new school is completed.

On completion of the new school both sets of pupils would move in.

Balhousie Primary School and North Muirton Primary School pupils would benefit from being taught in an environment that has been built for modern learning and teaching and to modern building standards and with specific consideration of the requirements of pupils and staff who will be using the school

Transport/Travel Arrangements

A high level assessment (Appendix 7) has been undertaken in regards to the impact on those pupils who currently walk to Balhousie Primary School and how they would be affected should the school close and they move to North Muirton Primary School.

All pupils living in the Balhousie Primary School catchment area and currently attending Balhousie Primary School would have further to travel to the new school at North Muirton. The travel distance and time for pupils is detailed in Appendix 7. All pupils would remain within the statutory walking distance to school (2 miles). Out of 69 catchment pupils attending Balhousie Primary School currently, 48 live within a mile of North Muirton Primary School. The pupils who live a mile away would take 20 minutes to walk to school. The furthest current pupils would have to travel is 1.7 miles, this would take 33 minutes. There are two pupils who would travel this distance.

It should be noted that a large number of pupils within the Balhousie Primary School catchment have chosen to travel to schools which are further from their home than Balhousie Primary School.

There are concerns from the community in regards to vehicle movements at the existing North Muirton Primary School, particularly if pupils are having to travel further. This can be addressed by creating a vehicle drop off/pick up in Argyll Road when the new school is built.

Financial Impact

The revenue savings generated from the closure of Balhousie Primary School amount £253,471 annually. This is predominantly made up of building costs and a proportion of staff costs.

The capital cost of upgrading the building of between £4.8 and £5.7 million would not be required, although there would be a requirement for essential works until the new school at North Muirton was complete.

A capital receipt for Balhousie Primary School would be forthcoming if the building is sold. There are no restrictions on the title to the property that prevent a sale.

The cost associated with a new build is approximately £13 million. This cost is based on recent school building projects and may change when detailed design work takes place. This cost assumes the building is completed in 2022, and a statutory consultation for the closure of Balhousie Primary School would take 1 year to complete.

Community Impact

It is clear from the feedback received from community drop-in sessions that parents and the wider community value Balhousie Primary School. Parents felt that the

school provided a vital link with the local community, particularly for those parents whose first language is not English.

There are a number of existing services within the community which would continue to provide support to those families whose first language is not English. For example, support would be available through the Perth and Kinross Association of Voluntary Services (PKAVS) Minority Communities Hub.

PKAVS Minority Communities Hub gives tailored support to people from minority backgrounds, particularly Eastern European, South Asian and Chinese. Established in 2010, it is the lead organisation supporting the expanding migrant population in Perth & Kinross, helping people access local services and play an active role in their community.

PKAVS Minority Communities Hub run a variety of support groups, all created in response to the needs of particular ethnic minority groups and the requests and interests of the people which it serves. Specific support the PKAVS Minority Communities Hub provides includes information, advice and referral support on employment, education, finance and health issues. In addition assistance with interpreting and translation is also provided with ESOL (English as a Second Language) classes designed to help people learn new languages.

PKAVS Minority Communities Hub works with over 25 organisations locally, including NHS Tayside, Perth and Kinross Council, Citizen's Advice Bureau and other charities to ensure people are adequately supported.

The staff at both Balhousie Primary School and North Muirton Primary School have experience in working with children and parents whose first language is not English. There are well established supports in place across schools for such children and their parents. This would continue if Balhousie Primary School is closed, and the pupils transferred to a new North Muirton Primary School.

Both schools have strong links with their local communities. Although the catchment with this option would be larger, this may bring more opportunities and plans can be made well in advance to retain these links.

Environmental Impact

There would be a positive environmental impact by closing Balhousie Primary School and moving pupils to a larger new build North Muirton Primary School.

The construction of the new building would adopt a zero carbon approach, in line with the Scottish Government climate change plan. This also ensures compliance with the Scottish Building Standards relating to energy and sustainability.

Having only one energy efficient building ultimately will reduce carbon emissions and energy costs by utilising zero carbon construction and renewable technologies.

Assessment of Option 2

This option is not favoured by those attending the community drop-in sessions and completing the online questionnaires for Balhousie Primary School.

However, a new school at North Muirton would benefit both existing North Muirton Primary School and Balhousie Primary School pupils and staff by providing a well-designed, spacious, accessible, bright and modern teaching environment. Children with additional support needs would have purpose built facilities which would provide support for individual and family needs. Nursery children from North Muirton Primary School, who are currently in a separate building, would benefit from being based in the same building as the primary school children.

Travel distance and time will be increased for pupils living within the existing Balhousie Primary School catchment area, but all pupils would be within statutory walking distance of the school.

The staff at both Balhousie Primary School and North Muirton Primary School have experience in working with children and parents whose first language is not English. There are well established supports in place across schools for such children and their parents.

Support for those families whose first language is not English would remain through the use of the PKAVS Minority Communities Hub. The Council would support the transition to the new school through joint working with PKAVS.

The cost associated with a new build, which would accommodate pupils from North Muirton Primary School and Balhousie Primary School, is approximately £13 million. This assumes the building is completed within 4 years. This would allow for a statutory consultation and 3 years design and build.

Capital funding may be required for essential works to keep Balhousie Primary School operational until the new school at North Muirton is completed.

This option represents better value than option 1. A new school can be provided which would accommodate pupils from both schools. The new school would be rated 'A' for condition and 'A' for suitability. The refurbishment of Balhousie Primary School is likely to result in a school which is 'B' for condition and 'C' for suitability, with little improvement in the learning and teaching environment.

The cost of the larger new school would be approximately £4.4m less than the cost of building a new school at North Muirton and refurbishing Balhousie Primary School.

There would be revenue savings of £253,471 annually generated from the closure of Balhousie Primary School. A capital receipt would be forthcoming if the building were sold.

There is a positive environmental impact as a result of this option as both existing school buildings would be replaced by one energy efficient building which reduces carbon emissions and energy costs by utilising zero carbon construction and renewable technologies.

This option will have a better outcome in terms of the learning and teaching environment for more than 300 pupils, additionally it will allow approximately £3m of capital to be reinvested in the wider school estate. Revenue savings will also support the wider delivery of education services.

9.3 Option 3 - Balhousie Primary School remains open – expand the provision of other Perth and Kinross Council services utilising space within the school for these services and improve condition and suitability. Consider building a new North Muirton Primary School

This option was considered as there is space within Balhousie Primary School that could be utilised by other services. This is because the school is under occupied and that is unlikely to change in the future. Services such as the Parenting and Family Learning and Development Team already operate from the school without affecting the daily operation of the school.

Balhousie Primary School - Community Feedback

Comments received on this option from those attending the Balhousie Primary School drop-in session included;

- ***“This option for sure. Please give Balhousie another chance to grow”***
- ***“The spare capacity at Balhousie PS could be used to develop life-long learning and adult literacy, particularly given the number of English as a second language parents.”***
- ***“From northern district days to Balhousie the school is steeped in hundreds of people’s lives and part of the community. Tapping into the community and giving them a place to come. This area doesn’t have a community centre.”***
- ***“Option 3 – Incorporate St Ninians into BPS and use St Ninians as nurture nest. Expand activities at BPS e.g. sports, art, fitness, language, music etc.”***
- ***“The school would be better used for other services whilst all pupils enjoying the school remaining open to enjoy the stability they have with Balhousie teachers and best friends”***

North Muirton Primary School – Community Feedback

Comments received on this option from those attending the North Muirton Primary School drop-in session included;

- ***“I think it would be lovely to retain Balhousie School building – I presume the other services would be separate from the classrooms etc – having their own entrance.”***

Comments received that did not favour this option include;

- ***“Not fair for pupils to have other services on site at school. Traffic and noise when they are trying to learn”***

Pupil Impact

The pupils that currently attend Balhousie Primary School are split into 5 classes. In addition the nursery utilise 2 rooms. The Parenting and Family Learning Development team use other spaces within the school.

Although other rooms are currently used within the building for the delivery of the curriculum there is still scope to accommodate other services within the school to make more effective use of space. The pupils currently use 5 classrooms, however the capacity of the school is based on 8 classrooms. There are also a number of other spaces which mean that the school has space for 11 classes in addition to the nursery.

Potential Services

The wider community at the drop-in session made a number of suggestions in relation to other services that could be included within the school;

- ***“Adult Literacy with support for individuals in the community who do not have English as a first language.”***
- ***“Incorporate St Ninian’s Episcopal Primary School within Balhousie Primary School and use St Ninian’s Episcopal Primary School exclusively as nurture for both school populations.”***

The **Parenting and Family Learning Development** team are currently located in the school. The Parenting and Family Learning Team based at Balhousie Primary School deliver effective evidence-based parenting and family learning programmes in a range of mainstream settings across Perth and Kinross.

There is adequate **nursery provision** at Balhousie Primary School and there is also scope for the extension to Early Learning and Childcare (ELC) which is being introduced for 3 to 5 year olds and eligible 2 year olds.

Children with **additional support needs** were accommodated at Balhousie Primary School for a brief period in 2013/14, however the building was not ideal due to accessibility issues and the children are now accommodated at Inch View Primary School, which was opened in 2009.

The school would not be ideal as a **community centre** other than outside school hours as the most suitable rooms for the community are used by the school for Physical Education (PE) and dining. It should also be noted that the school has no regular lets.

Financial Impact

There are annual running costs of £547,704 associated with Balhousie Primary School for staff, security, domestic rates, water and sewerage, maintenance, grounds maintenance and energy.

The cost associated with a new build primary school at North Muirton, for the current capacity of North Muirton Primary School, is approximately £11.7 million. This assumes the building is completed within 3 years.

Although it would represent better value in terms of running costs, if additional services were to be accommodated within the school, the work to upgrade the condition and suitability would still be required for the reasons set out in option 2.

The cost to improve the condition of Balhousie Primary School is between £4.8 and £5.7 million. There is potentially a funding shortfall of between £0.5m and £1.4m to build a new school of the same capacity at North Muirton and fully refurbish Balhousie Primary School. In addition £600,000 revenue would be required to decant pupils while the refurbishment is taking place.

Assessment of Option 3

Feedback on this option was positive from the wider community that attended the drop-in session for both schools; however it was not as popular as option 1.

Accommodating additional services in the school would be better value than option 1, as the running costs and capital spend required for Balhousie Primary School would provide greater benefits as the school would be more fully occupied. It would retain the school for current pupils and maintain links between the school and the local community including the Care Home

However, at this time, no service has been identified which could utilise the available space within Balhousie Primary School: ASN provision was previously moved to a more accessible school; there is no requirement for additional nursery places and; there is no potential, suitable community use identified for the building.

It should be noted that any new service would not be able to utilise space within Balhousie Primary School until refurbishment works were completed and therefore this would have to be considered at a future date, when service/asset requirements are known. This creates an added uncertainty over this option as it cannot be predicted with any degree of certainty that other services could be identified at that time.

Therefore this option is not reasonable.

9.4 Alternative Option(s) – Balhousie Primary School

An additional question was asked at the Balhousie Primary School drop-in session which was;

“Are there any other options that you would like to propose for the school?”

One option suggested was that St Ninian’s Episcopal Primary School could be closed and pupils from St Ninian’s Episcopal Primary School move into Balhousie Primary School. St Ninian’s Episcopal Primary School is located in close proximity (0.2 miles) to Balhousie Primary School.

St Ninian’s Episcopal Primary School is denominational school and therefore, an appraisal of this option has been undertaken on the basis that St Ninian’s Episcopal Primary School would retain its denominational status and move into Balhousie Primary School and operate as a separate school.

Accommodation Impact

The approved capacity at Balhousie Primary School is 224. The rolls of both schools are less than this so the building would be able to accommodate this number of pupils.

There are sufficient teaching spaces to accommodate both schools although some movement of existing Balhousie Primary School classes may need to take place to ensure both schools continue to operate in a way that retains their status as separate schools and delivers the curriculum.

If Balhousie Primary School was to remain open the capital works required on the building would still need to be undertaken. It would be prudent to leave St Ninian’s Episcopal Primary School in its current location until this work is complete. This would minimise any impact on the school should Balhousie Primary School need to close for a period of time for refurbishment.

Consideration would need to be given to providing separate office space for St Ninian’s Episcopal Primary School once it moved into Balhousie Primary School so it could continue to operate as a separate school and ideally pupils would use separate entrances.

Ancillary space such as dining and the hall and potentially outdoor space would need to be shared and timetabled to ensure all pupils are able to access facilities.

Pupil Impact

This model operates at Blairgowrie Community Campus with Newhill Primary School and St Stephen's RC Primary School occupying the same building but maintaining unique identities.

Blairgowrie Community Campus was purpose built for this type of arrangement.

There would need to be changes to the way that both schools are operated and compromises are likely to be required in terms of the use of space. Class sizes and compositions would be the same as for both schools at present, as they will operate independently. The school is not designed to operate as two separate schools; pupils will not be able to interact and use space as they do currently.

Although the condition of the school would be improved, there would be limited improvement to the suitability and to the learning and teaching environment and no upgrading across other services highlighted in section 7.7.

Transport/Travel Arrangements

There would be little impact on travel arrangements for pupils as a result of this option progressing. Current St Ninian's Episcopal Primary School pupils are not transported by the Council and a significant number live in the Balhousie Primary School catchment or a neighbouring catchment.

Balhousie Primary School is located 0.2 miles from St Ninian's Episcopal Primary School and therefore any additional travel distance would be negligible.

Financial Impact

There are annual running costs of £547,704 associated with Balhousie Primary School for staff, security, domestic rates, water and sewerage, maintenance, grounds maintenance and energy.

The cost to improve the condition rating for Balhousie Primary School is between £4.8 and £5.7 million.

There would be revenue savings of £62,405 annually if St Ninian's Episcopal Primary School was to close and move into Balhousie Primary School. Maintenance works to the value of £325,000 required for St Ninian's Episcopal Primary School would not be required.

The total cost for a new build North Muirton Primary School and to improve the condition and suitability rating associated with Balhousie Primary School is between £16.5 million and £17.4 million.

There is £16 million funding within the capital programme for a new primary school in North Perth.

There is potentially a funding shortfall of between £0.5m and £1.4m to build a new school at North Muirton and refurbish Balhousie Primary School.

Assessment of Alternative Option

It would be possible to move St Ninian’s Episcopal Primary School into Balhousie Primary School and operate it as a separate school, however there will be operational compromises to be made by pupils and staff in both schools. It is likely that these compromises will not benefit either set of pupils.

Financial benefits will be achieved through the closure of St Ninian’s Episcopal Primary School, in terms of the reduction in annual property costs and the capital cost of upgrading St Ninian’s Episcopal Primary School.

The cost of upgrading Balhousie Primary School would represent better value with increased pupil numbers, however this assumes that St Ninian’s Episcopal Primary School pupil numbers are maintained with the move to Balhousie Primary School.

The key issue with this option is however the fact that pupils from St Ninian’s Episcopal Primary School will be moving to a school which is a less suitable environment than their current school, even if the works were carried out on Balhousie Primary School. As stated already elsewhere in the Options Appraisal, although the condition of the school would be improved through the carrying out of those works, there would be limited improvement to the suitability and to the learning and teaching environment, and no upgrading across other areas highlighted in section 7.7. Pupils generally attend St Ninian’s Episcopal Primary School on a placing request and it is possible that pupil numbers would not be sustained if the school was relocated to Balhousie Primary School. This option could result in uncertainty over the future of St Ninian’s Episcopal Primary School through a reduction in pupil numbers. This would result in Balhousie Primary School once again being under occupied.

10. Overview of Options

Option	Option Description	Outcome
1	Both schools remain open – consider building a new school at North Muirton Primary School and improve condition and suitability at Balhousie Primary School	Rejected. Not a reasonable option. This option is not best value, currently not affordable and does not provide the best learning and teaching environment for Balhousie Primary School pupils that could be obtained with the funding available.
2	Consider closing Balhousie Primary School and moving pupils to a larger new build North Muirton Primary School	Accepted as a reasonable option. This option will provide a well-designed, accessible, modern teaching space which would benefit both Balhousie

		Primary School and North Muirton Primary School pupils and families. £3m would be available to improve the wider school estate and revenue savings will support the wider delivery of education services.
3	Balhousesie Primary School remains open – expand the provision of other Perth and Kinross services utilising space within the school for these services and improve condition and suitability. Consider building a new North Muirton Primary School	Rejected. Not a reasonable option. It has not been possible to identify a service for which the building would be an appropriate location.
4	Additional option proposed at community drop-in session to use the building to incorporate St Ninian’s Episcopal Primary School as well as Balhousesie Primary School.	Rejected. Not a reasonable option. Pupils from St Ninian’s Episcopal Primary School would be moving to a school environment which is less suitable than their current environment, even after refurbishment.

The outcome of the option appraisal recommends Option 2 (Consider closing Balhousesie Primary School and moving pupils to a larger new build North Muirton Primary School) as the reasonable option.

11. Detailed Analysis of Reasonable Option: Consider closing Balhousesie Primary School and moving pupils to a larger new build North Muirton Primary School

11.1 Pupil Projections

Pupil numbers and projections at Balhousesie Primary School, using current trends, show a gradual increase in numbers until 2021/22. This is due to pupils from house building being included in the figures. If pupils from the new houses follow the trends of current pupils in the catchment i.e. by attending other schools the increase in pupils is likely to be much less than forecast.

The table below shows the projected school roll if Balhousesie Primary School and North Muirton Primary School were combined within a new build at North Muirton. It should be noted that a new school at North Muirton would not be completed until 2021/22 (academic year).

	2018/19	2019/20	2020/21	2021/22
North Muirton Primary School Roll	234	236	241	239
Balhousesie Primary	117	128	134	141

School Roll (including house building)				
School Roll	351	364	375	380

At Census 2017 there were over 200 pupils living in the Balhousie Primary School catchment area that attended other schools in the authority, with 135 pupils attending St John's RC Primary School. Almost half of the 135 pupils attending St John's RC Primary School live closer to that school than to Balhousie Primary School and there are pupils who attend because it is a denominational school. It is likely that when the new school is completed in 2021/22, this trend will continue. If it does not, it is likely that this will take place over a period of time, beginning with new P1s as pupils would tend to remain at their current schools for continuity.

With General Purpose (GP) spaces, the new school would have a potential capacity of 500 pupils. It should be noted that the school will be designed in such a way that it can be extended in future years.

11.2 Educational Benefits

Educational Benefit Statement

This Educational Benefits Statement is written from the perspective of benefits, should the preferred option outlined in the options appraisal subsequently be implemented. This statement is focused on the educational benefits for pupils attending the proposed new build North Muirton Primary School, which will accommodate pupils from the current Balhousie Primary School catchment area and the current North Muirton Primary School catchment.

Learning and Teaching

Children attending the new build North Muirton Primary School will have access to a wide range of teaching and support staff. The new building will house a double stream school i.e 14 classes, with a nurture class and enhanced provision, which will be purpose built for pupils with Additional Support Needs. This enhanced provision and the allocated resources, will provide the opportunity for targeted support and safe and secure break out and intervention spaces.

Within the new build North Muirton Primary School, pupils will have access to a modern nursery area, with internal and external play areas, utilising a range of surfaces to support learning and play. The new school will have the benefit of having the early years provision in the same building as the primary classes, thus improving the quality of the transition from nursery to primary, with shared spaces and resources, accommodated in one place. The condition and suitability of the early years provision will be of the highest standard.

Both Balhousie Primary School and North Muirton Primary School currently offer Strong Start places, as well as full time provision for nursery aged children. The new build North Muirton Primary School will provide both of these within the Early Years

setting, in purpose built accommodation and with staff who are experienced in supporting children from vulnerable families. In addition, the accommodation will have been built specifically for the 2 year old age group.

Currently, there are in place at both schools the opportunities to improve arrangements for planning and taking forward improvements through effective self-evaluation and planning for improvements for all staff. Within a new build North Muirton Primary School, any good practice in these areas can be shared between staff from both schools. Staff who currently don't have a stage partner, because the school is single stream, will have the benefit of being to work alongside such a partner in the new school, providing new opportunities for peer support, challenge and a sharing of ideas. The support and challenge of a senior management team, who are not class committed, can also be effective in these areas too. This in turn supports the teaching practice in the classrooms and the delivery of the curriculum, to the benefit of all pupils, delivered in a way most appropriate to their individual needs.

Environment for Learning

Experience in our other new school buildings has demonstrated that a new, flexible learning environment has inspired pupils. The modern, purpose built teaching spaces, breakout areas, communal and outdoor areas allow for greater flexibility in how the curriculum can be delivered, maximising use of both physical space and staff.

In addition to classroom space, there will be General Purpose (GP) rooms, meeting and group rooms and a multi-purpose games hall. This will extend the opportunities for the pupils to utilise flexible accommodation, which is attractive, bright, with well-designed classrooms, naturally lit with modern teaching equipment and resources. The new school will benefit from design practices which support a varied range of teaching environments that best deliver learning. Spaces for learning will be designed in such a way as to allow a range of teaching styles and approaches including active outdoor learning.

Within the new build school, classrooms will have teaching walls, with interactive whiteboards, providing the opportunity for all children to access the curriculum in modern and innovative ways.

The provision of a new build at North Muirton will provide a range of facilities in school grounds, offering opportunities for the pupils to experience a range of team and individual sports. These outdoor facilities, which can be used by all children, will provide a space where such physical activity, both planned and informal, can take place throughout the year, regardless of inclement weather. Playtime will be a much more enjoyable experience for all children and young people given the size and nature of the outdoor space.

A new build North Muirton Primary School will be fully accessible for both children and adults with Additional Support Needs with fully accessible toilet and changing facilities. The new build will meet the requirements of accessibility for learners with disabilities, complying with the Council's Accessibility Strategy and the Equality Act (2010).

Experiences and Opportunities

Within the new build North Muirton Primary School, there will be numerous opportunities for social interaction as well as the more formal learning experiences planned for all children and young people. This will include peer activities in class and at break times, availability of school clubs and extra-curricular activities and team activities and sports.

In North Muirton at present, children contribute to the life of the school in a range of ways, including Primary 7 prefects, buddies and a range of committees. An example of this is the successful eco development which has been sustained over a number of years and has included members of the community. Pupils are given opportunities to lead and make decisions. All staff are encouraged to work collaboratively within a climate of continuous professional development that encourages and promotes a culture of shared leadership. Benefits to pupils from such activities are evident in their increased levels of confidence, their ability to compromise and to work as part of a team.

Pupils at Balhousie Primary School have similar opportunities with an elected Pupil Council representing every class in school. Pupils are also actively involved in the day to day running of the school through activities such as organising playground activities and games, presenting learning events to parents and assisting younger children during assemblies. These activities are designed to develop independence and a sense of responsibility in pupils. All of these experiences and opportunities will be afforded to the pupils in the new build school.

At North Muirton Primary School staff actively seek opportunities for children to develop confidence, personal skills and physical fitness. Examples include a wide range of sporting events; participation in school productions and performances for parents, carers and peers on an annual basis; and after school clubs run by staff. At Balhousie Primary School, a wide range of activities are on offer to pupils with productions, Learning Evenings and Afternoons and a French Café. In addition there is a popular Glee Club, and the same range of sporting activities as North Muirton. Within the new build North Muirton Primary School, the modern facilities will support these opportunities for all pupils.

North Muirton Primary School pupils have links with the local community, using the North Inch Community Campus on a fortnightly basis, and working on a Secret Garden with dementia patients attending a Day Centre local to the school. These opportunities allow the pupils to develop social skills and assists with emotional wellbeing. There are also strong links with Riverside Church where end of term services are held. Balhousie Primary School also enjoys and encourages links with the community, with Open Days and Fayres, as well as the intergenerational work with nursery and P5 children and the local Care Home residents. Skills gained within these areas have been transferrable and strengthened the children's engagement in developing the skills required to be a successful contributor to society. These very important links can be maintained and possibly enhanced through a wider range of opportunities in the new build North Muirton Primary School.

Pupils from both schools use the local area for their “Daily Mile”, promoting healthy activity and strengthening links with the local community and the varied environment around the school, with the river, trees and wildlife. With the location of the new build school, this will continue.

Both North Muirton Primary School and Balhousie Primary School have active Parent Councils and parents are encouraged to participate in the life of the school. It is anticipated the new Parent Council will continue to be active and involved in all aspects of school life where appropriate. The scale and scope of the range and type of opportunities for parental involvement and engagement is likely to be greater than at present.

There is currently provision at North Muirton Primary School of After School Care, which offers structured play for the children and also provides a useful service to working parents and carers. This service would continue to be offered at the new build North Muirton Primary School, thus benefiting all children and their families.

In summary, pupils at both North Muirton Primary School and Balhousie Primary School currently have a range of experiences and opportunities. The coming together of both groups of staff and pupils in the new school will broaden these experiences and opportunities for all.

Summary of Educational Benefits

- The school roll at the new build North Muirton Primary School allows all children to participate in peer support, classroom learning, and learning groups across stages and between classes, with the benefit of allowing children to have a wide and varied range of learning experiences.
- The new build school will easily lend itself to modern teaching methodology, with good use of break out space, accessible and flexible teaching spaces, outdoor areas and good facilities for sport and leisure. In addition the new technology available through a new build project will help support learning and teaching.
- The new build school will incorporate all stages of early years, nurture and ASN provision, allowing a range of learning opportunities for all children and young people. The facilities for this provision will be purpose built.
- The range and type of experiences and outcomes offered will be enhanced at the new school.

11.3 Impact on Travel Arrangements

A high level assessment (See Appendix 7) has been undertaken in regards to the impact on those pupils who currently walk to Balhousie Primary School and how they would be affected should the school close and they move to North Muirton Primary School.

Out of 69 catchment pupils, 48 live within a mile of North Muirton Primary School. The pupils who live a mile away would take approximately 20 minutes to walk to school. The furthest current pupils would have to travel is approximately 1.7 miles, this would take approximately 33 minutes. There are two pupils who would travel this distance.

It should be noted that a large number of pupils within the Balhousie Primary School catchment are already travelling to schools which are further from their home than Balhousie Primary School.

There are existing concerns in regards to vehicle movements at the existing North Muirton Primary School. An option that is being considered to alleviate these issues is to create vehicle drop off/pick up in Argyll Road when the new school is built.

11.4 Community Impact

The feedback from the community drop-in session and online questionnaire from Balhousie Primary School is that the school plays a vital link for people engaging with the local community.

One comment as to why a parent chose Balhousie Primary School was because of the ***“Links with the community to benefit their social skills”***.

From both drop-in sessions concerns regarding the integration of the pupils and community were raised. However, there were also positive comments in relation to the opportunity for the communities to mix. The integration of pupils and community members would have to be carefully managed and supported in the event of Balhousie Primary School closing.

North Muirton Primary School drop-in session had some positive comments regarding the merging of the two schools ***“A large new build school is great as it could also include more classroom spaces for pupils that need more support and it would also bring communities together merging the schools”***.

Families living in the Balhousie Primary School catchment area who use the existing school as a link to the local community would continue to be supported by organisations such as PKAVS. Both schools are also experienced in dealing with families who do not have English as a first language.

Both schools have strong links with their local communities. Although the catchment with this option would be larger, this may bring more opportunities and plans can be made well in advance to retain these links.

11.5 Financial Impact

A new school can be provided which would accommodate pupils from both schools. The new school would be rated ‘A’ for condition and ‘A’ for suitability. The refurbishment of Balhousie Primary School is likely to result in a school which is ‘B’ for condition and ‘C’ for suitability.

The cost of the larger new school would be approximately £4.4m less than the cost of building a new school at North Muirton and refurbishing Balhousie Primary School.

There would be revenue savings of £253,471 annually generated from the closure of Balhousie Primary School. A capital receipt would be forthcoming if the building were sold.

The financial template which summarises the financial impact of closing Balhousie Primary School and incorporating it in North Muirton Primary School is contained in Appendix 8.

This option will have a better outcome on terms of the school environment for both sets of pupils, additionally it will allow approximately £3m of capital to be reinvested in the wider school estate. Revenue savings on the building will also support the wider delivery of education services.

11.6 Environmental Impact

North Muirton is well served by public transport and there is a bus stop near Balhousie Primary School, which stops near to North Muirton Primary School on Bute Drive. This will help to minimise the environmental impact of travel to school, if pupils choose not to walk.

There is a positive environmental impact as a result of this option as both existing school buildings would be replaced by one energy efficient building which reduces carbon emissions and energy costs by utilising zero carbon construction and renewable technologies.

Socio-Economic Impact

There may be an economic impact on families, if parents choose to take public transport or the car instead of walking to school. It should be noted that the majority of pupils are likely to take less than 20 minutes to get to school by walking.

The new North Muirton Primary School would benefit families from Balhousie Primary School by providing a breakfast club and after school club in the school. Currently children from Balhousie Primary School are transported to St John's RC Primary School.

12 Conclusion

Four options have been reviewed in considering the future of Balhousie Primary School and North Muirton Primary School.

Information has been collated on pupil numbers, housebuilding, finances, travel arrangements, environmental impact on the local area and community to inform the options.

As part of the review, an engagement exercise was carried out with local communities.

Each of the options was then considered individually. The option which was considered to be reasonable was then considered in more detail, including considering the travel arrangements, community impact and educational benefits.

Option 1 - **both schools remain open – consider building a new school at North Muirton Primary School and improve condition and suitability at Balhousie Primary School** has been discounted. This is because an extensive refurbishment would see the fabric of the building at Balhousie Primary School improved but would not provide an improved teaching and learning environment. In addition this option is not considered best value for the Council: the cost of this option is approximately £4.4m greater; Balhousie Primary School pupils will have a school that is still not suitable; the school building will still be under occupied.

Option 3 - **Balhousie Primary School remains open – expand the provision of other Perth and Kinross Council services utilising space within the school for these services and improve condition and suitability. Consider building a new North Muirton Primary School** has been discounted. This is because there is no service currently identified that could move into the school.

Another option, similar to option 3 was considered. This was **to retain Balhousie Primary School, close St Ninian’s Episcopal Primary School and use the Balhousie building to operate both schools individually**. This was discounted because pupils from St Ninian’s Episcopal Primary School would be moving to a school environment which is less suitable than their current environment.

The option that was considered reasonable was Option 2 - **consider closing Balhousie Primary School and moving pupils to a larger new build North Muirton Primary School**. This option will provide well designed, accessible, modern teaching space which would benefit both Balhousie Primary School and North Muirton Primary School pupils and families. The cost of the new school would be approximately £4.4m less than the cost of building a new school at North Muirton and refurbishing Balhousie Primary School.

This would provide best value for Council, allowing it to invest the capital and revenue saved into improving other school buildings and supporting the wider delivery of education services.

Balhouses Primary School

Community Drop-In Session

7 September 2017

**Overview of comments received at Community
drop-in session and Online Questionnaires**

Online Questionnaire Feedback

- 22 Questionnaires submitted online – 17 completed, 5 partially completed
- 55% (11) of responses from parents, 20% (4) of responses from other family members, 10% (2) of responses from neighbours, 10% (2) of responses from 'other' and 5% (1) of responses from the wider community. 10% (2) had given no indication of the relationship to the school
- 6 questionnaires were submitted without any comments
- 53% (9) of responses preferred option 1 and 47% (8) preferred option 3. Responses from 5 questionnaires gave no indication of their preference.
- Questionnaire closed on 6 October 2017

Online Questionnaire Feedback

Option 1 - Both schools remain open – consider building a new school at North Muirton Primary School and improve the conditions and suitability at Balhousie School

Comments

- My son enjoys being part of Balhousie nursery class and as the numbers are not as much as the larger schools/ nurseries he is able to spend a lot more one to one time with the teachers than he would anywhere else. My opinion is that if the class numbers were any higher the teachers wouldn't be able to have the same bonds with the kids as it would in no doubt get lost. Many of the parents have chosen this school and/ or nursery because of the ability there is for the teachers to progress the kids more with the small numbers they have. My son has come on leaps and bounds since starting nursery and I'm in no doubt that he wouldn't have progressed as much if the numbers were larger because the teachers wouldn't have as some time to spend with each child. The kids love it as there is space for them to play rather than tripping over each other.
- Well established school with strong community links. Generations of families have attended. Historic building.
- My little boy attends nursery at Balhousie and has settled so well with his friends and surroundings. I travel every day from Stanley to bring him to Balhousie and he loves it.
- Children are settled at Balhousie and the travel for some parents they might find it difficult to get there on time depending where they are.
- Because the children are used to the school.
- It's a good long standing school and the children seem to love it.
- Why are you even considering looking to close this city school which is in the heart of an up and coming community again? Are you as a council looking at the smaller outlying schools? Such as Logiealmond, Kettins, Glendelvine. Just to name three, or is this just another exercise by PKC as you have already decided?
- Easy access and prefer my daughter to be at a smaller school as I feel she would be better supported than in a bigger school where she may get lost in the system.

Online Questionnaire Feedback

Option 2 - Consider closing Balhousie Primary School and moving pupils to a new build North Muirton Primary School

Comments

- Option two would make Muirton 'ghetto-like' in that all schools would be centred there. I do not think that would be good at all for that area or a healthy option for the community. There really should be an option for those pupils not living in Muirton, and so Balhousie is the ideal location.
- What the impact would be on the children and the upheaval and unsettledness it would cause.
- If families wanted their children attending North Muirton Primary School then they would have applied for a place at the start of the child's school journey.
- Do not close Balhousie.
- I definitely believe that closing down Balhousie Primary School would be detrimental to the local area with pupils from Muirton having to travel extra distance to school than currently. This may cause safety issues with children going to and from school. I also believe that children learn better in a smaller class size and smaller overall school size. I feel it is more friendly and personal that all the pupils and teachers know everyone's names.
- I'm completely against shutting Balhousie, I big school becomes impersonal and it's not the kid's opinions that are valued anymore because there is too many.
- None, just keep Balhousie open.
- Keep Balhousie open.

Online Questionnaire Feedback

Option 3 - Balhousie Primary School remains open – expand the provision of other PKC services utilising space within the school for these services and improve condition and suitability. Consider building a new North Muirton Primary School

Comments

- My second option would be 3 to utilise the space already in the school but still keep the school open.
- School have good location. It's not huge building like other so kids feels at school like home.
- As a neighbour and retired P&K teacher of a different Primary School, I am proud to see the turnaround in this school and it is obvious to see how hard the Head Teacher and his staff have worked to bring it to the point it is at today. Under no circumstances would I close a school community as good as this one. As there is spare capacity, it could be utilised with other services also under its roof. That makes its physical proximity easier to access, from this area and even the town, without going right into the heart of Muirton or further afield. There is also ample parking for other professionals etc to use.
- Think option 3 is ideal. Keep Balhousie open and utilise it for other services also. Maybe utilise it for older members of the community too somehow eg evening classes etc.
- Balhousie Primary School is a great asset to the community. It is a landmark building of historic importance which deserves to be preserved and sustained in a way that continues to serve the local area.
- My daughter has been at nursery since she was 2 and due to start school next year seen as she's had settling issues I want to keep her in the environment she knows and the staff too I think the school could be utilised more and offer more to local children.
- Balhousie is situated in a good place, North Muirton has a primary school already no point in building another one keep Balhousie open.
- I believe that Balhousie Primary School should remain open as there is definitely a need for 2 primary schools in this area as Muirton and North Muirton are large housing areas with Muirton soon to expand its housing in the next few months which will undoubtedly increase enrolment into Balhousie especially. If there are spare classrooms etc in Balhousie still then these can surely be utilised with other services to ensure full use of the school.
- With the building of new houses in Muirton I feel that putting all these new families plus Balhousie primary pupils and the current north Muirton pupils into one school will lose the personality and approachability that Balhousie currently has. Plus the distance fact has to be factored in. Currently we walk everyday but with north Muirton being further away it's likely that we would

have to drive every day, costing us more and impacting more on North Muirton traffic and parking. With the adding of extra PKC services may bring a fresh new outlook to the school.

- Why would you close a school with a small number of pupils, that has room for more, what happen when all the houses at Muirton are occupied? 200 houses possibility of on average say 100 children! Where do all these kids go to school? People check out schools prior to buying a house! If there is no school in the near vicinity which is easily accessible, which Balhousie is, they will chose to move elsewhere for good accessible schooling! A good school is so important to families! What is it they say school days are the best days of your life! Let's make them in a nice wee school that is accessible to all! Let's close the school prior to the houses being occupied, then when they are, the schools that are in the catchment area are full to bursting! Then let's pay to transport the kids to a school out of their catchment area that does have room! Predominantly most of the kids at Balhousie walk to school, put them to a school further away then you clog up the roads! Fumes, emissions polluting the atmosphere! Also a new school is not built overnight!

Questionnaires were also provided at the drop-in session, the feedback is as follows:

Option 1 - Both schools remain open – consider building a new school at North Muirton Primary School and improve the conditions and suitability at Balhousie School

Comments

- My preferred option is for the school to remain open because my son started his education here following our arrival from Poland and he feels safe here. He likes his school and he likes coming to school.
- Option 1 and 3 are very good for my daughter.
- Option 1 and 3 are safe for my child for whom this school is like a second home (a home away from home). A thought about change moves him to tears
- This option is the safest for me and for my children. We live nearby.
- I think it's the best option from the choice given. This is a small school where all children and teachers know each other – it means our children feel like at home. It's especially important for children of migrants, who once again would have to be uprooted and moved. School's closure would be very stressful to them. The children and parents love this school and people who teach here!!! My daughter is so concerned about her school's future!!
- Because three of my children attend this school from the beginning of their school education. They're very happy here and never had any problems; they make friendships here and love their teachers. The biggest asset of this school is the fact that it's so small allowing everyone getting to know each other. Everyone contributes to the unique, fantastic and friendly atmosphere. Also – children are really upset at the thought of closing this school.
- My daughter like this school, she knows this school, this school is not very far from us.
- Keeping Balhousie open is my main concern.

Questionnaires were also provided at the drop-in session, the feedback is as follows:

Option 2 - Consider closing Balhousie Primary School and moving pupils to a new build North Muirton Primary School

Comments

- Option 2 is not an option I would ever consider. I cannot imagine moving my son to another school. My son feels strong connection to the school, its teachers and other children. My son is quite distressed already at the thought of changing school.
- I really do not want the school to close. My son finished this school and my daughter has another 4 years to go. Both kids are very happy with the school and so am I.
- Option which I did not choose should not be considered 😊
- Do your renovations and other improvements to school but do not close.
- I cannot even begin to imagine the stress and distress of children who would have to be moved to another school.
- I can't bear the thought of closing this school. This would not be good for our children.

Questionnaires were also provided at the drop-in session, the feedback is as follows:

Option 3 - Balhousie Primary School remains open – expand the provision of other PKC services utilising space within the school for these services and improve condition and suitability. Consider building a new North Muirton Primary School

Comments

- Incorporate St Ninian's into Balhousie and use St Ninian's as a nurture base/youth club.
- New methods – trial as a pilot site
- North Muirton – how old?
- Why: financial gain/Flats/Sewers
- Education and Children's Plan
- Expand on activities as BPS, focus on fitness, art, language, music etc.
- I am resident at Grove Care Home. Would miss coming to this school to visit pupils and vice-versa.
- Don't want to lose community link with school.
- Local community school which could thrive if given the right conditions. Empower Headteacher and resource appropriately.
- Option 1 and 3 are very good for my daughter.
- Option 1 and 3 are safe for my child for whom this school is like a second home (a home away from home). A thought about change moves him to tears.

Feedback from questionnaires completed at the drop-in session

Are there any other options that you would like to propose for the school?

Comments

- (From North Muirton) New build for Balhousie.
- If you were to move other services here – perhaps music or sport activities.
- If you were to move music or art services here, I would be using it – even at a fee. Option 3 would be good for me then.
- More sport and entertainment for children.
- My daughter, through tears, asked if we have any money that we could donate to the school to keep it open. If necessary we can start fundraising and help with schools renovations and other jobs around school. Any improvements however should be done during school holidays.
- Perhaps, to improve school's finances you may wish to consider making improvements and renting space out to other educational meetings or trainings.
- Join the school together.
- Is the school funding not better spent within the classrooms rather than a new building.
- 1 open adult learning centre in the school to encourage parents to develop literacy/numeracy skills. Possibly as an ESL centre. 2 early intervention to 'close the gap' in attainment. Parenting classes/social work/health professionals base.

Community Drop-In Session

Drop-in session ran from 3pm – 7pm on 7 September 2017

- 69 attendees at the session
- 57% (39) of attendees were parents
- 4% (3) were press
- 7% (5) were North Inch House representatives
- 7% (5) were “other family members”
- 19% (13) were neighbours/residents
- 5% (3) were pupils
- 1% (1) a teacher

Comments received at the drop-in session

Option 1 - Both schools remain open – consider building a new school at North Muirton Primary School and improve the conditions and suitability at Balhousie School

Comments

- Save our school!!
- + A young vibrant parent council who are committed to the school.
- Option 1 – “improve the condition” of Balhousie Primary. Excellent school – should remain open.
- With house building in Muirton there is a good chance that the school population will increase.
- Investing in improving the conditions and also the provision to support learning and learners would make the school more attractive to parents who currently choose other schools.
- I prefer to keep Balhousie School open because: is small and my child feels safe and happy here. Has good scores in education. Nice teachers and staff works in Balhousie.
- History of school – multi generational family history as well as school history.
- Option 1 – Keep both schools and spend some money on necessary things rather than (art!!)!!!
- Option 1 – my son attends this school and my daughter spent all her primary years here. It’s a fantastic school, it definitely needs upgrading – classrooms etc. Great community school!! Multi-cultural.
- I think Balhousie Primary should stay open because it’s a great school and its part of the community.
- New houses are being built in this area, so school pupil roll will increase. Keep Balhousie School open.
- A very high quality of teaching staff.
- The liaison work between P6/P7 and the care homes is so beneficial to both.
- It’s a no brainer. The school must stay open.
- Improve the facilities. Make the playground a vibrant, safe and attractive place to be – sports ground etc. To encourage more pupils to enrol. Yes to Option 1.
- I prefer to keep this school because it is good situated and has history and good climate. My child love learning in this school. Option 1.
- Option 1. Save Balhousie Primary School it’s a beautiful old building. Why spend money on new school when we could restore this school.
- I prefer this option. Balhousie Primary is a gorgeous school full of welcoming staff and pupils.

- Love this school.
- Option 1 a possibility or Option 3. It's a big school and would accommodate more services to make it more a community school.
- I prefer this option. Balhousie Primary School is an old school but with traditions. My daughter loves this school.
- Needs a lot of input and money spent on the school. Please save Balhousie.
- If upgraded – then give 3 or 4 years to see the effect on the school roll. If no change then option 3. Give school a chance to increase roll.
- Save Balhousie because it is a great school.
- 30% of parents are from Polish/Bulgarian backgrounds. No family.
- School roll has gone up (without upgrading) so if upgraded – more pupils.
- Better publicity about how good Balhousie Primary is. How much it has improved over the past few years. A lot of people probably don't know.
- Building is lovely.
- The school is centre of this neighbourhood and has a friendly environment.
- Save the school!!!
- I want the school to keep open!!
- Children (and parents) not treated or considered as “foreigners”.
- Please keep our school as the teachers are nice.
- Don't want new North Muirton as too far to go.

Comments received at the drop-in session

Option 2 - Consider closing Balhousie Primary School and moving pupils to a new build North Muirton Primary School

Comments

- Option 2 – is this to raise money on back of City of Culture failure bid? Too much money wasted already by P&KC.
- Option 2 – No repeat of Caledonian Road needed.
- Option 2 – Why? Financial gain. Non sensical. No mention of St Johns.
- Option 2 should not be an option. 1. A waste of money. 2. Balhousie would be left for 8 years empty until some idiot decides what to do.....build flats should not be an option. KEEP OUR school.
- 1. Part of the community. 2. Great learning opportunity with small class sizes. Option 2 not an option.
- Option 2. What proportion of parents would have access to their own transport to take their children to and from North Muirton? There is a main road which has a fairly high pollution level if parents were taking this route from most of Dunkeld Road. This could be detrimental to their health and wellbeing.
- Moving kids into a larger building would affect kids hugely as they know all teachers and pupils inside out within the school they attend at the moment. Local kids in the surrounding area have enjoyed the pleasure of Balhousie Primary School for a lot of years and hopefully in the upcoming years.
- Not an option for me. It would be left empty for years and left to rot.
- Don't destroy the heart of the community.
- Option 2 – the school building at Balhousie Primary has extensive playground area and indoor space that could be developed into a community hub. There are very few community spaces in the locale.
- As a local resident it would be helpful to know how P&K Council would develop the site. Would it be sold for housing – a fairly unimaginative but profitable solution but not enhancing the potential for community?
- Save Balhousie School. Perth needs this architecture and history.
- No thanks.
- Do not close such a good school. It is exemplary.
- Don't close.
- All my family for generations have attended this school and I feel very strongly about this. Common sense must prevail. Don't close Balhousie!
- Friends/community would be lost – all going to different schools.
- Wouldn't want the school to close. My daughter came here and she loved it.
- Save the school!!!
- Better playground. Trim trail.

- Larger new build would possibly be an improvement but too costly to run perhaps. I like facilities for nursery attached to a primary school. Grassed area as in days of old recommended.
- Historic building been standing over 100 years -v- a new build school with a 30 year lifespan?

Comments received at the drop-in session

Option 3 - Balhousie Primary School remains open – expand the provision of other PKC services utilising space within the school for these services and improve condition and suitability. Consider building a new North Muirton Primary School

Comments

- Upgrading the school would upgrade the class sizes!!
- Don't shut the school!!
- This option for sure. Please give Balhousie another chance to grow.
- Fine school with impressive programme, including music and drama. One idea (expensive) is to refurbish the building to accommodate an Art School/Music School with outside areas for tennis. Athletics, swimming/squash. Dormitory accommodation (where necessary) could be established. Summer school lets established for income.
- Balhousie Primary is a family school and is simply fantastic. It must be saved!! No other option is feasible.
- To keep the school forever.
- Don't close school!!!!
- Option 3 is a good one IF it prevents the closure.
- Option 1 or 3.
- Option 3. It is also a good idea. Improve condition please!
- Option 3. The children also benefit from links with the local community. They sing for residents at Balhousie care home, which teaches the children much, but also helps the residents of the home enjoy life. They have many more links with the community – one of which is carol singing at Asda around Christmas which the staff and customers alike always comment how lovely it is. The proximity of Balhousie to these is invaluable – children can shop at Asda for snacks (nursery, French afternoons etc.) which are a valuable life skill. They are also within walking distance of the museum, concert hall and many more facilities including Bells and the North Inch. Also many of the pupils here walk to school which for many would be impossible if the school were to close and amalgamate with North Muirton. Parents here feel comfortable sending their children to school on foot.
- The spare capacity at Balhousie PS could be used to develop life-long learning and adult literacy, particularly given the number of English as a second language parents.
- Having been at a larger primary school, the differences between that and a small one like BPS are obvious. The teachers have more time with the pupils here and as such it shows in their enthusiasm at school. I know the numbers will increase with the new buildings close by but hopefully the split will be

between here, North Muirton and St Johns. Improving the services at the school would help the pupils and the area.

- Option 3 is also one I would favour. Balhousie Primary School may be old but it is a gorgeous building full of wonderful staff and pupils.
- Option 3 – Balhousie could be the compromise for use if you're determined to build a new school at North Muirton.
- Balhousie remains open, combine St Ninian's and Balhousie. Change catchment area to a larger scale.
- Option 3 – Incorporate St Ninian's into BPS and use St Ninian's as nurture nest. Expand activities at BPS e.g. sports, art, fitness, language, music etc.
- Option 3- Pilot new systems at BPS re: education processes.
- With the building of 209 new houses in Muirton I would rather improve the suitability and put extra services in than close the school as then the new school at NM numbers will be greatly increased, which would impact travel, parking etc.
- From northern district days to Balhousie the school is steeped in hundreds of people's lives and part of the community. Tapping into the community and giving them a place to come. This area doesn't have a community centre.
- The school would be better used for other services whilst all pupils enjoying the school remaining open to enjoy the stability they have with Balhousie teachers and best friends.
- Stick to school – not other services.

Comments received at the drop-in session

Are there any other options that you would like to propose for the school?

Comments

- Bring it into the 21st Century.
- Modernise it and make it part of the community. Make nursery bigger.
- The building could be improved to meet the safety standards which would cost less than building a new school.
- Playground improvements.
- Playground improvements.
- A better playground.
- Outside sporting facilities for kids – especially football.
- Containers from Sports Development.
- Do the repairs. Cheaper than a new build.
- Move pupils from St Ninian's to Balhousie and close St Ninian's. Also do Balhousie up.
- Why not join St Ninian's and Balhousie together and do the repairs. Not everyone can do large schools.
- Combine St Ninian's with Balhousie Primary.
- Fix up Balhousie School and bring St Ninian's here as it's bigger.
- Join St Ninian's with Balhousie Primary in Balhousie Primary.
- Combine St Ninian's and Balhousie. Update interior within remit (listed building). Have a specialist team for disabilities. This will stamp out discrimination.
- Literacy centre. Library – kids (open 3pm – 5/6pm). Extra needs unit. Sensory/nurture room.
- Community is important – keep our school.
- Taking more interest and more improvements (upgrading) of the school rather than spending more money on a new building therefore removing the funds that would be more beneficial in the classroom.
- A dedicated zone for 2 year olds as nursery isn't big enough to accommodate at the moment.
- Not enough people realise just how good this school is – hence it is not at full capacity.
- Keep the school open! Old building with history.
- Excellent facilities for our children. Great library. Great IT room. Big playground.
- Excellent communication between staff and parents. Great old building with very big history.
- Great teachers. Very good location. Give for our children better future.

- Don't want to impact on the "survival" of any other school in the programme.
- Closing Balhousie is a ridiculous idea given the amount of new family housing being built. If the children all end up at North Muirton it will make it a "ghetto" of schools in that area.

Comments received at the drop-in session

A large number of catchment pupils attend other schools. What do you think are the reasons for this?

Comments

- Lost children to the new St Johns School. But not everyone can do big schools.
- If the school was upgraded I think more people would send their children to their catchment.
- School facilities need to be modernised.
- Poor reputation in the neighbourhood. Resident Muirton Place. Issues: Behaviour, resources, concrete play area. PKC needs to support school more.
- History of BPS over past years no longer applicable eg. Rough school.
- Require better learning support resources.
- People do not realise how good this school is.
- Balhousie remain home. There are new houses getting built means more children. Balhousie is a fantastic large building - so much potential.
- A lot of children do not come here as they want St Johns due to religion.
- Teachers are friendly and care about children. School does need a lot of repairs but will stand longer than new buildings.
- Draw of a new build school – which isn't always better!
- Smaller numbers means teachers better focused – more personable, everyone knows everyone.
- I think this school is cool, so keep it open!!

Comments received at the drop-in session

What are your reasons for choosing Balhousie Primary School for your preferred school?

Comments

- Smaller class sizes
- Teacher/parent relationships
- Location
- Choice
- Teachers knowing all children and their needs
- Links with the community to benefit their social skills
- Traditional building
- Generations of families
- Iconic building
- Lots of space in playground and classes
- New builds inferior quality
- Change for 'change sake' is not the answer

Ideas given at the drop-in session for a refurbished Balhousie Primary School:

- More computers. Currently 1 between 2.
- Grass for football and little ones.
- Shelter for outside.
- Soft surfacing in the playground

Letter & Comments Received: North Inch/North Grove Care Home

- This is a letter written on behalf of our residents at North Inch/North Grove Care Home. We have had the children from Balhousie Primary School coming into our home for many years to take part in our Christmas Concert and our residents love to see and hear them. Also for the last two years class 5/6 have been taking part as an intergenerational with our residents which has made a great difference to their lives, they look forward to them coming every week and some have actually formed bonds with their individual 'Buddy', closing the school would be a great loss to our residents and the children. We also have visits from Balhousie Nursery the children all take part in the different activities we have going on; this really lifts our residents moods. When the residents were told about the meeting regarding a possible closure of the school one lady's comments was "they won't think about us when they close the school it's all about them and money". We at North Inch Grove would hope that you do consider our community and our bonds with this school before making a decision.
- We very much enjoy the integrational days with Balhousie Primary School.
- I look forward the children from Balhousie School visits.
- This has made a big difference to our time in North Inch House having the children visits us.
- Having the children in each week give us something to look forward to.

North Muirton Primary School

Community Drop-In Session

13 September 2017

**Overview of comments received at Community
drop-in session and Online Questionnaires**

Online Questionnaire Feedback

- 12 Questionnaires submitted online – 6 completed, 6 partially completed
- 64% (7) of responses from parents, 18% (2) of responses from neighbours and 18% (2) of responses from the wider community. 1 had no indication of the relationship to the school
- 7 questionnaires were submitted without any comments
- 50% (3) of responses preferred option 1, 17% (1) preferred option 2 and 33% (2) preferred option 3. 6 questionnaires submitted gave no indication of their preference.
- Questionnaire closed on 6 October 2017

Online Questionnaire Feedback

Option 1 - Both schools remain open – consider building a new school at North Muirton Primary School and improve the conditions and suitability at Balhousie School.

Comments

- Stability for all children
- Those living locally to Balhousie Primary School do not necessarily live locally to North Muirton Primary School for this to be practical. North Muirton is badly in need of being modernised.

Online Questionnaire Feedback

Option 2 - Consider closing Balhousie Primary School and moving pupils to a new build North Muirton Primary School.

Comments

- A new school with better facility's for the children.
- I think it would be very silly to close Balhousie, as I'm sure many within Perth. You don't want to push schools and teachers to the breaking point and rather than improve children's learning you'll be hampering it.

Online Questionnaire Feedback

Option 3 - Balhousie Primary School remains open – expand the provision of other PKC services utilising space within the school for these services and improve condition and suitability. Consider building a new North Muirton Primary School.

Comments

- I don't mind option 2 but feel option 3 is more beneficial to children's development and learning with 2 younger children likely to benefit from a new school it is important to me that having larger numbers of children to teach won't mean that children would be left behind that struggle and bullying isn't an issue with more children present too.
- Would hate to see another desolate grand building in Perth. Both schools deserve to stay. However as an ex North Muirton Primary pupils I can say it needed renovation or a new build then and that was 10 years ago! I am looking to send my son there in the coming years and I would like it to remain the quality of teaching I remember but to have the ability to provide this in the best possible way!

Questionnaires were provided at the drop-in session and completed at the Fun Filled Friday event held on 8 September 2017, the feedback is as follows:

Option 1 - Both schools remain open – consider building a new school at North Muirton Primary School and improve the condition and suitability at Balhousie Primary School.

Comments

- It's what we are used to and bringing new people in might "let the area down" change the school. Would make things different – know everyone here because they live in area - generations have come to the school.
- Previous experience of schools merging changes everything. Whole community and how it runs wouldn't want it – disruption for children. Like the size of the school. Lovely schools and ASN dealt with well at the school and supportive, teachers good, parents know each other.
- The school communities are very different and don't know how long the adjustments would be and it might not be positive for a long time.
- Catchment area was Balhousie – don't want a school where there are too many Polish children and with Balhousie there would be and so that English can be learned.
- Large number of EAL pupils at Balhousie mixing with ASN pupils at North Muirton might have issues.
- If no reasons to put together then don't close Balhousie but if you have to then it would be ok. New school might attract parents and teachers and teachers deserve a decent working area. Addition of Balhousie pupils could change the dynamics in the school.
- Traffic would be horrendous need to park at shops – otherwise fine.
- No preference re option as long as North Muirton stays here.
- Long way for pupils to come from Balhousie and they can't walk to school and this should be encouraged.
- Both schools should stay open for new houses.
- I like the size of the school, just enough pupils, staff good.
- North Muirton needs refurbished, no issues with existing site. Concerned with issues regarding the layout of the gym hall and open plan design. Like to see bigger nursery.
- Important that nurture space is considered in any new school.
- Would like new school at North Muirton – likes the smaller classes.
- Would like new school at North Muirton – I have one son who's completed a whole 9 years at North Muirton from nursery – P7. I also have daughters whom have started at North Muirton from nursery and now P., P.. and nursery. I would like to see North Muirton upgraded as the work with the pupils that has been done would be potentially ruined. North Muirton deserves to be if not upgraded then most certainly re-done. There are too many

children in and around this area that count on the school. I have no concerns if Balhousie and North Muirton were to be joined together as an option either.

- Size just now is fine.
- Both schools need to be modernised.

Questionnaires were provided at the drop-in session and completed at the Fun Filled Friday event held on 8 September 2017, the feedback is as follows:

Option 2 - Consider closing Balhousie Primary School and moving pupils to a new build North Muirton Primary School.

Comments

- (From North Muirton) I have no problems if Balhousie and North Muirton were to be joined together as an option either.
- Both schools deserve to be modern – This is a good school.
- It makes sense financially and gives everyone the same standard.
- As long as there is a school at North Muirton.
- Ok with Balhousie if it helped with composite classes – more specialist teachers available.
- Happy with additional pupils and would help with composite classes.
- Would like to see North Muirton, Balhousie and St Ninian's as one school.
- Happy to see any significant development.
- North Muirton is old and spending on both buildings would be a never ending saga. Would be a boost to the community to see a new school building.
- More pupils means a happier school.
- To help school roll at North Muirton – population is largely static in North Muirton. Including Balhousie would ensure viability of North Muirton Primary School.
- Easiest – children don't care where they are – bringing in Balhousie would increase class sizes. No issue about Balhousie but might be an issue for the parents – traffic issues especially if Balhousie parents driving or getting buses.

Questionnaires were provided at the drop-in session and completed at the Fun Filled Friday event held on 8 September 2017, the feedback is as follows:

Option 3 - Balhousie Primary School remains open – expand the provision of other PKC services utilising space within the school for these services and improve condition and suitability. Consider building a new North Muirton Primary School.

Comments

No responses for option 3 received from questionnaires at either the Fun Filled Friday event or the drop-in session.

Community Drop-In Session

Drop-in session ran from 3pm – 7pm on 13 September 2017

- 15 attendees at the session
- 93% (14) of attendees were parents
- 7% (1) “other family members”

Comments received at the drop-in session

Option 1 - Both schools remain open – consider building a new school at North Muirton Primary School and improve the condition and suitability at Balhousie Primary School.

Comments

- Good idea – stones in playground are not safe. P1's keep falling and cutting themselves. Please get them away.
- I feel this would be the best outcome for both schools/parents.
- Great idea to build a new school.
- Great idea – if on the present site.
- Good idea for a new school to be built – better teacher environment, more outdoor play areas, climbing/activity area.
- I would like a new build for North Muirton – without it being too large with too many pupils.
- The current building is no longer fit for purpose.
- Balhousie needs upgrading on the inside.
- I feel it would be good to retain Balhousie as a primary.

Comments received at the drop-in session

Option 2 - Consider closing Balhousie Primary School and moving pupils to a new build North Muirton Primary School.

Comments

- Could work well, giving Balhousie pupils a wider range of friends and classmates.
- Would like the larger school to remain on present site as most pupils would be from North Muirton.
- A large new build school is great as it could also include more classroom spaces for pupils that need more support and it would also bring communities together merging the schools.
- Merging both schools is a better option rather than having empty classrooms, giving children an education in an inclusive environment.
- It would make monetary sense to combine both schools under North Muirton.
- Good – if classes have enough staff and support staff and kids that require extra support don't lose out.
- Quite like idea of bigger school if it would mean we retain the teachers longer! Seems North Muirton has a lot of turn around regarding teachers.
- I like idea of a small community school as teachers know parents and pupils better and have a better 1:1 relationship.

Comments received at the drop-in session

Option 3 - Balhousie Primary School remains open – expand the provision of other PKC services utilising space within the school for these services and improve condition and suitability. Consider building a new North Muirton Primary School.

Comments

- I think it would be lovely to retain Balhousie School building – I presume the other services would be separate from the classrooms etc – having their own entrance.
- Concerns over what services could be moved into the old school.
- Children's education is the most important thing here I hope the changes don't cause too much disruption.
- Not fair for pupils to have other services on site at school. Traffic and noise when they are trying to learn.

Ideas given at the drop-in session and Fun Filled Friday event for a new North Muirton Primary School if it was to be built:

- More playground stuff.
- More playground equipment.
- Toilets that work.
- No way to get on the roof.
- Bigger dinner hall.
- Air fresheners.
- ICT suite.
- Bigger lunch hall.
- More things in the playground.
- More maths.
- Bigger and cleaner toilets.
- Nothing for kids to play on in playground.
- The play area needs to have an all-weather area.
- In my new school I would like an art room, more things in the playground, more rooms.
- As long as there are enough teachers to meet all the pupils needs.
- Rivalries – need to keep staff levels up so that kids can still maintain a level of 1 on 1 attention.
- Want to keep our Head teacher should both schools come together.

The Scottish Index of Multiple Deprivation (SIMD) identifies small area concentrations of multiple deprivation across all of Scotland in a consistent way. It allows effective targeting of policies and funding where the aim is to wholly or partly tackle or take account of area concentrations of multiple deprivation. SIMD provides information to help improve the understanding about the outcomes and circumstances of people living in the most deprived areas in Scotland.

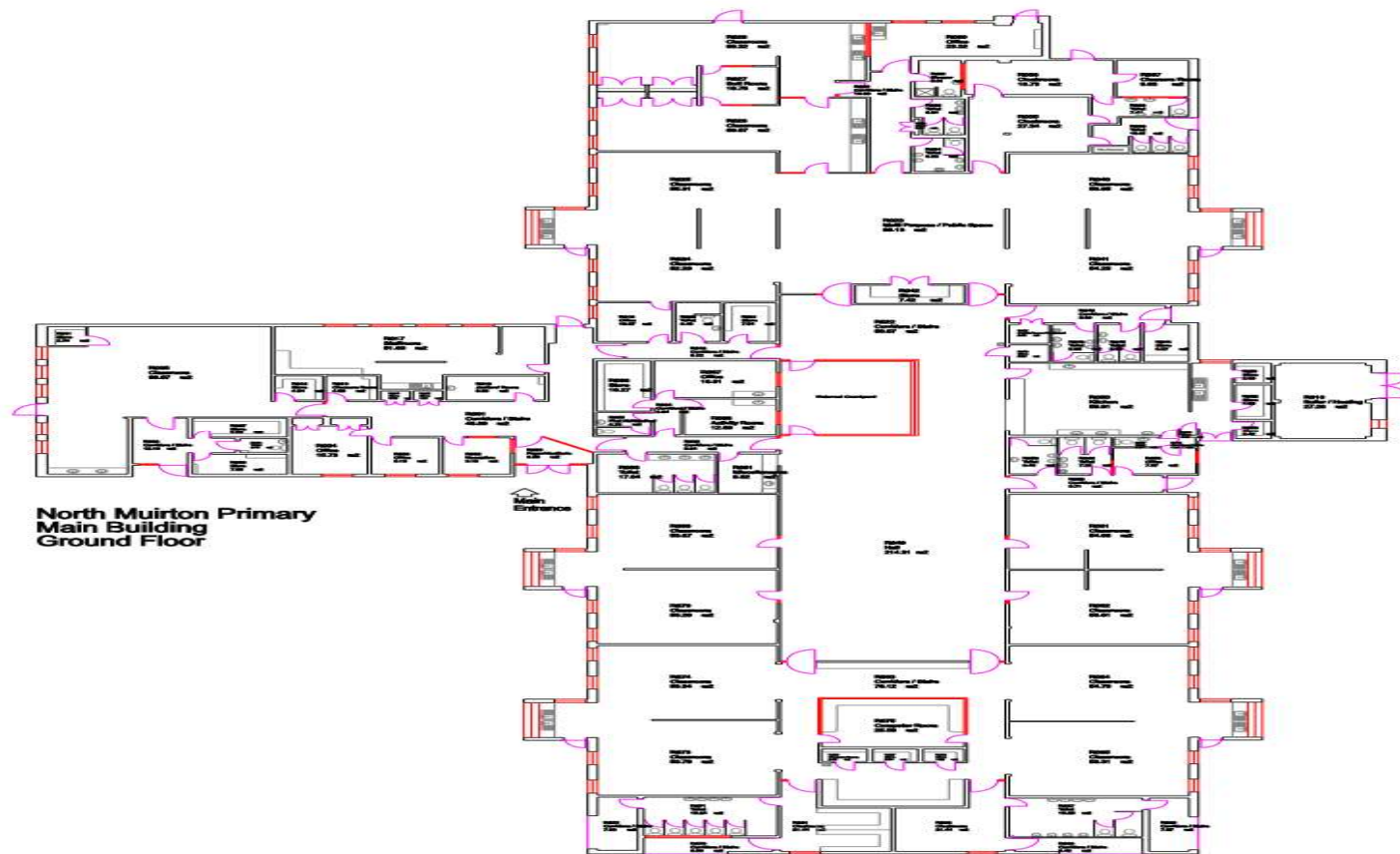
SIMD ranks to quintiles, deciles and vigintiles. Quintiles split data zones into 5 groups, each containing 20% of data zones. The lower the quintile the more deprived the area.

ACORN is a well-developed segmentation tool which categorises the UK's population into demographic types. Acorn segments households, postcodes and neighbourhoods into 6 categories, 18 groups and 62 types, based on a range of different data collected in many ways.

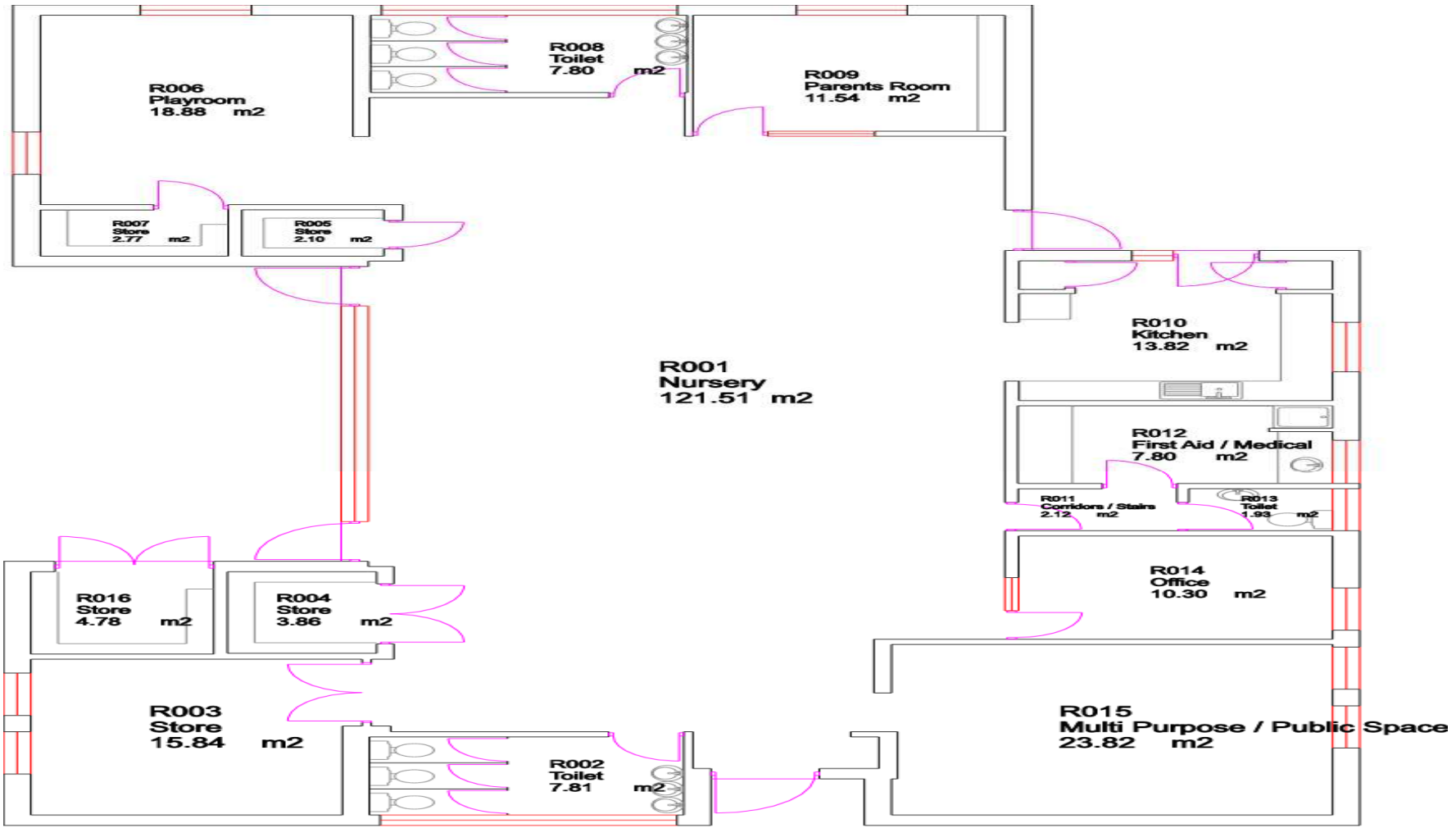
ACORN is used to understand life and living conditions, lifestyles, behaviours and attitudes and can therefore help inform the public service needs of neighbourhoods and households.

There are 5 categories ACORN reports on; Category 1 Affluent Achievers, Category 2 Rising Prosperity, Category 3 Comfortable Communities, Category 4 Financially Stretched and Category 5 Urban Adversity.

Category 5 indicates the level of deprivation within an area.



North Muirton Primary
Main Building
Ground Floor



**North Muirton Primary
Nursery Building
Ground Floor**

**Main
Entrance**

Suitability

The ratings are defined as follows;

A – Good – Performing well and operating efficiently (the school buildings and grounds support the delivery of services to children and communities)

B – Satisfactory – Performing well but with minor problems (the school buildings and grounds generally support the delivery of services to children and communities)

C – Poor – Showing major problems and/or not operating optimally (the schools buildings and grounds impede the delivery of activities that are needed for children and communities in the school)

D – Bad – Does not support the delivery of services to children and communities (the school buildings and grounds seriously impede the delivery of activities that are needed for children and communities in the school)

Condition

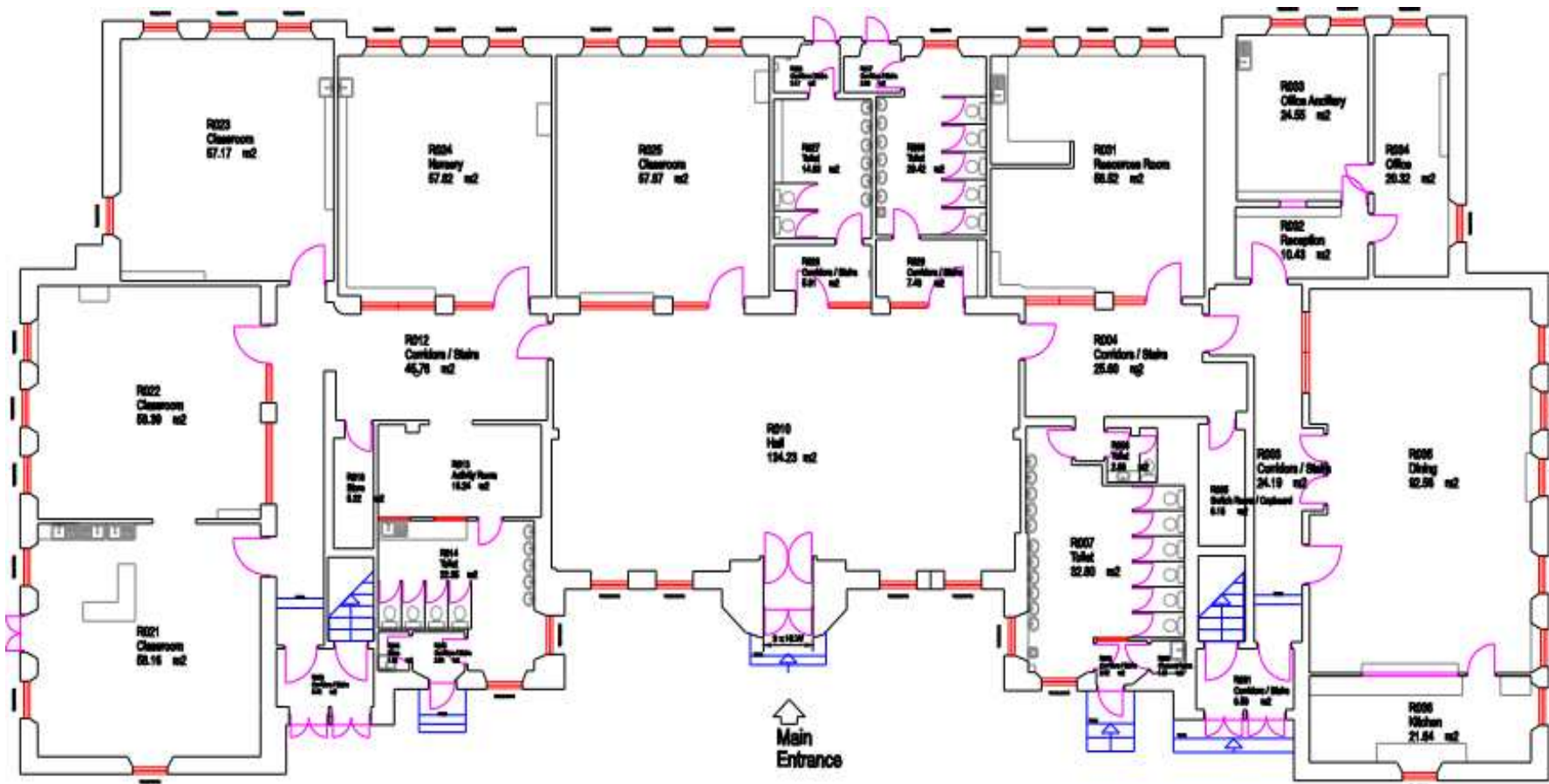
The ratings are defined as follows;

A Good – performing well and operating efficiently

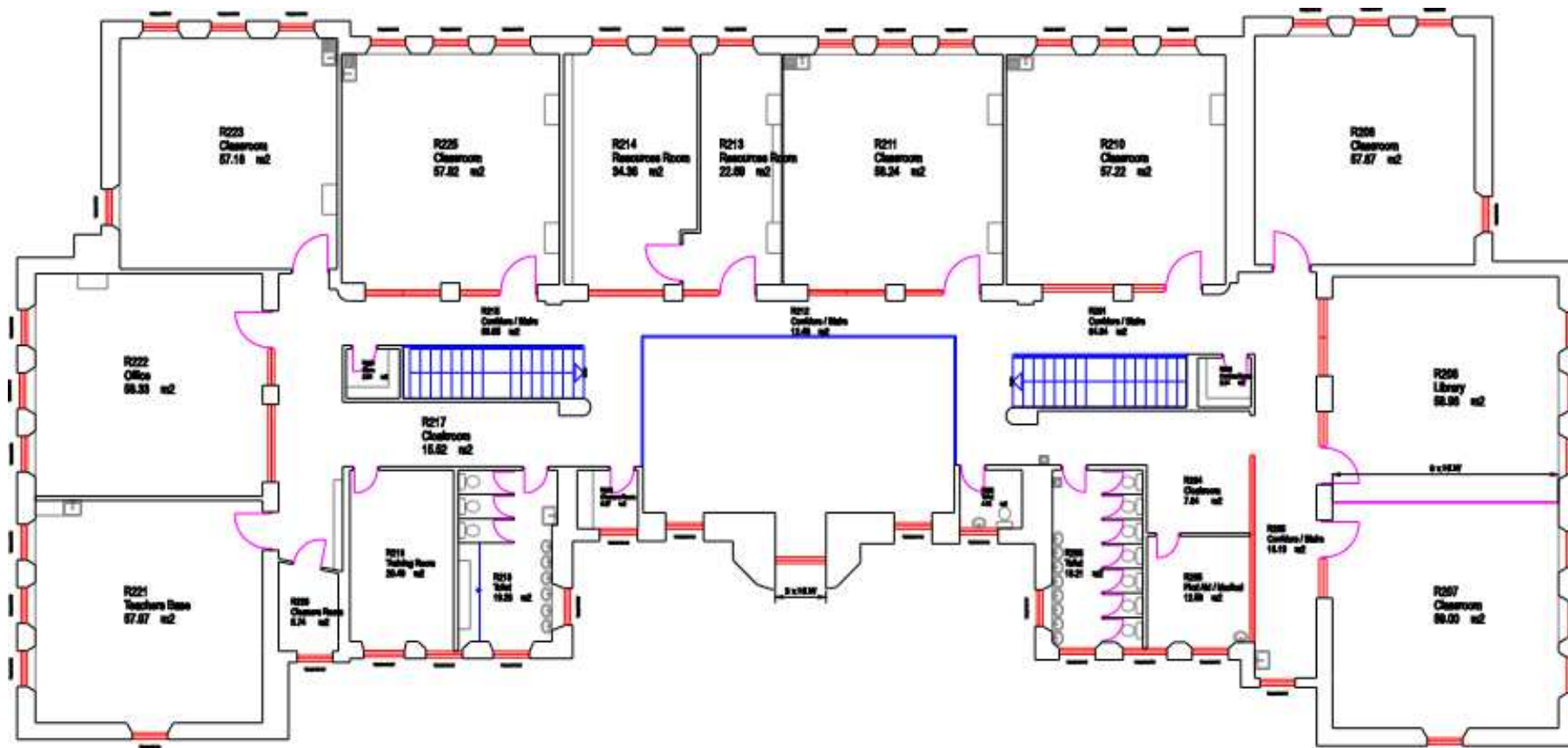
B Satisfactory – performing adequately but showing minor deterioration

C Poor – showing major defects and/or not operating adequately

D Bad – economic life expired and/or risk of failure



Balhousie Primary
Main Building
Ground Floor



Balhousie Primary
 Main Building
 First Floor

APPENDIX 6

Balhousesie Primary School	Learning and Teaching <i>e.g Classrooms, areas for group work/private study, internal and external PE / games areas</i>	Internal Social Areas <i>e.g pupil social areas, dining, common rooms, staffrooms</i>	Internal Facilities <i>e.g reception, administration, office, meeting, circulation space, resource, staff bases, library, toilets</i>	External Social Areas <i>e.g play, covered, seated areas</i>	External Facilities <i>e.g car parks, bike sheds, drop-off areas, storage facilities</i>	Total
Functionality	C	B	C	C	C	C
Accessibility	C	C	C	C	D	C
Environmental Conditions	C	C	C	C	C	C
Safety & Security	C	C	C	D	C	C
Fixed Furniture & Fittings	B	C	C	C	C	B
Overall rating	C	C	C	C	C	C

APPENDIX 7

Area	Number of pupils (approx.)	Travel Distance to Balhousie (approx.)	Travel Distance to North Muirton (approx.)	Travel Time to Balhousie Walking (approx.)	Travel Time to North Muirton Walking (approx.)	Comments
Malvina Place	23	0.5 miles	0.8 miles	11 minutes	16 minutes	There are safe routes to school for these pupils.
Muirton Place	15	0.2 miles	1 miles	3 minutes	20 minutes	There are safe routes to school for these pupils.
Inchaffray Street/Stanley Crescent	10	0.1 miles	1.2 miles	2 minutes	24 minutes	There are safe routes to school for these pupils.
Rae ce/Duncansby Way	10	0.4 miles	0.9 miles	8 minutes	17 minutes	There are safe routes to school for these pupils.
Barossa Street	5	0.5 miles	1.5 miles	11 minutes	30 minutes	There are safe routes to school for these pupils.
Collinson View	4	0.2 miles	1.3 miles	5 minutes	27 minutes	There are safe routes to school for these pupils.

Monart Road/St. Catherines's Road	2	0.6 miles	1.7 miles	13 minutes	33 minutes	There are safe routes to school for these pupils. An alternative route that could be used is via Dunkeld Road/Gowans Terrace/Bute Drive.
--	---	-----------	-----------	------------	------------	--

Monart Road/St. Catherines's Road

- The quickest pedestrian route is via Balhousie Street and via North Inch campus pedestrian/cycle lane leading to Bute Drive.
- The walking route takes approximately 33 mins and is 1.7 miles long.
- There is a pelican crossing opposite St. Ninian's Episcopal Primary School to cross Dunkeld Road.
- Balhousie Street is very heavily used at peak school times with school traffic/buses to Muirton Community Nursery and North Inch Campus. It is also heavily used by pedestrians.
- There is currently a school crossing patroller (SCP) at Gowans Terrace adjacent to the North Inch Campus.
- There is a zebra crossing on Bute Drive opposite May Place as well as an SCP opposite North Muirton Primary at Uist Place.
- There is a 20mph traffic zone on Bute Drive around the Uist Place junction leading to North Muirton Primary School.
- An alternative route could be via Dunkeld Road/Gowans Terrace/Bute Drive.
- The walking route takes approximately 35 mins and is 1.7 miles long.
- Gowans Terrace/Bute Drive is very heavily used at peak school times with school traffic/buses to Perth Grammar, Muirton Community Nursery and North Inch Campus.
- There is currently no SCP at the Perth Grammar School end of Gowans Terrace.

Inchaffray Street/Stanley Crescent area

- There is a pedestrian walking route which takes approximately 24 mins and is 1.2 miles long via either Balhousie Street/North Inch Campus or via Dunkeld Road/Gowans Terrace/Bute Drive.
- Stanley Crescent is a walking time of approximately 22 mins and is 1.1 miles long.
- The same comments as above apply in terms of route information.

Collinson View Area

- There is a pedestrian walking route which takes approximately 27 mins via either Crieff Road/Dunkeld Road/Gowans Terrace (distance of 1.3 miles) or via Crieff Road/Muirton Place/Balhousie Street (distance of 1.4 miles).
- There is a pelican crossing to cross Dunkeld Road either opposite Balhousie Primary or at Dunkeld Road shops.
- The same comments as above apply in terms of route information.

Rae Place/Duncansby Way Area

- There is a pedestrian walking route which takes approximately 17 mins via Dunkeld Road/Gowans Terrace/Bute Drive. The distance is 0.9 miles from Rae Place.
- There is a pelican crossing to cross Dunkeld Road at Dunkeld Road shops.
- The time it takes to walk from Duncansby Way takes approximately 16 mins and is 0.8 miles long, however pedestrians would need to go to Rae Place to access the pelican crossing over Dunkeld Road.
- The same comments as above apply in terms of route information.

Muirton Area

- There is a pedestrian walking route which takes approximately 30 mins and is 1.5 miles long from Barossa Street to North Muirton Primary School.
- The route is via Balhousie Street/North Inch Campus.
- The walking time from Gowans Terrace takes approximately 15 mins via North Inch Campus (0.8 miles) or approximately 13 mins via Gowans Terrace/Bute Drive (0.7 miles).
- The same comments as above apply in terms of route information.

Any additional transport time would be minimal for those pupils currently attending Balhousie Primary School on transport provided by the Council if they were to attend a new build North Muirton Primary School.

Catchment pupils who live further than 2 miles from their catchment school receive transport from the Council. If this option progresses there are currently no catchment pupils living further than 2 miles from North Muirton Primary School.

Current revenue costs for school proposed for closure			
Name of School	Costs for full financial year (2017-18)	Additional financial impact on receiving school [New North Muirton]	Annual recurring savings (column 2 minus column 3)
Balhousie Primary School			
School costs			
<i>Employee costs -</i>			
teaching staff	£ 372,872.00	£ 230,995.00	£ 141,877.00
support staff	£ 47,122.00	£ 35,642.10	£ 11,479.90
teaching staff training (CPD etc)	£ 750.00	£ 75.00	£ 675.00
support staff training	£ -	£ -	£ -
Supply costs	£ 4,851.00	£ 3,323.00	£ 1,528.00
Slippage Target	-£ 11,358.00	-£ 7,199.00	-£ 4,159.00
<i>Building costs:</i>			
property insurance	£ -	£ -	£ -
non domestic rates	£ 28,819.00	£ -	£ 28,819.00
water & sewerage charges	£ 4,510.00	£ -	£ 4,510.00
energy costs	£ 15,305.00	£ -	£ 15,305.00
cleaning (contract or inhouse)	£ 30,905.00	£ -	£ 30,905.00
building repair & maintenance	£ 26,058.00	£ -	£ 26,058.00
grounds maintenance	£ 448.00	£ -	£ 448.00
facilities management costs - note 6	£ -	£ -	£ -
revenue costs arising from capital	£ -	£ -	£ -
Other	£ 2,959.00	£ -	£ 2,959.00
<i>School operational costs:</i>			
learning materials	£ 5,313.00	£ 4,678.20	£ 634.80

catering (contract or inhouse)	£ -	£ -	£ -
SQA costs	£ -	£ -	£ -
other school operational costs (e.g. licences)	£ -	£ -	£ -
<i>Transport costs: note 3</i>			
home to school	£ 19,000.00	£ 26,600.00	-£ 7,600.00
other pupil transport costs	£ -	£ -	£ -
staff travel	£ 150.00	£ 119.10	£ 30.90
SCHOOL COSTS SUB-TOTAL	£ 547,704.00	£ 294,233.40	£ 253,470.60
Income:			
Sale of meals	£ -		£ -
Lets	£ -		£ -
External care provider	£ -		£ -
Other	£ -		£ -
SCHOOL INCOME SUB-TOTAL	£ -		£ -
TOTAL COSTS MINUS INCOME FOR SCHOOL	£ 547,704.00	£ 294,233.40	£ 253,470.60
UNIT COST PER PUPIL PER YEAR	£ 5,317.51	£ 2,856.63	£ 2,460.88

Capital costs	School proposed for closure	Receiving school
Capital Life Cycle cost	£ -	£ -
Third party contributions to capital costs	£ -	£ -

Annual Property costs incurred (moth-balling) until disposal	
property insurance	£ -
non domestic rates	£ 28,819.00
water & sewerage charges	£ 1,700.00
energy costs	£ 4,700.00
cleaning (contract or inhouse)	£ -
security costs	£ -
building repair & maintenance	£ -
grounds maintenance	£ -
facilities management costs	£ -
Other	£ -
TOTAL ANNUAL COST UNTIL DISPOSAL	£ 35,219.00

Non-recurring revenue costs	
	£ -
TOTAL NON-RECURRING REVENUE COSTS	£ -

Impact on GAE			
based on pupils going to New North Muirton PS		£	-
GAE IMPACT		£	-
Current revenue costs for school proposed for replacement			
Name of School	Costs for full financial year (2017-18)	Additional financial impact on receiving school [N/A]	Annual recurring savings (column 2 minus column 3)
North Muirton Primary School			
School costs			
<i>Employee costs -</i>			
teaching staff	£ 611,497.00	£ -	£ 611,497.00
support staff	£ 56,315.00	£ -	£ 56,315.00
teaching staff training (CPD etc)	£ 500.00	£ -	£ 500.00
support staff training		£ -	£ -
Supply costs	£ 8,220.00	£ -	£ 8,220.00
Slippage Target	-£ 18,485.00	£ -	-£ 18,485.00
<i>Building costs:</i>			
property insurance	£ -	£ -	£ -
non domestic rates	£ 60,499.00	£ -	£ 60,499.00
water & sewerage charges	£ 6,339.00	£ -	£ 6,339.00
energy costs	£ 24,410.00	£ -	£ 24,410.00
cleaning (contract or inhouse)	£ 49,417.00	£ -	£ 49,417.00
building repair & maintenance	£ 31,096.00	£ -	£ 31,096.00
grounds maintenance	£ 8,625.00	£ -	£ 8,625.00
facilities management costs - note 6	£ -	£ -	£ -
revenue costs arising from capital	£ -	£ -	£ -
Other	£ 4,514.00	£ -	£ 4,514.00

<i>School operational costs:</i>			
learning materials	£ 9,297.00		£ 9,297.00
catering (contract or inhouse)	£ -	£ -	£ -
SQA costs	£ -	£ -	£ -
other school operational costs (e.g. licences)	£ -	£ -	£ -
<i>Transport costs: note 3</i>			
home to school			£ -
other pupil transport costs	£ -	£ -	£ -
staff travel	£ 317.00	£ -	£ 317.00
SCHOOL COSTS SUB-TOTAL	£ 852,561.00	£ -	£ 852,561.00
Income:			
Sale of meals	£ -		£ -
Lets	£ -		£ -
External care provider	£ -		£ -
Other	£ -		£ -
SCHOOL INCOME SUB-TOTAL	£ -		£ -
TOTAL COSTS MINUS INCOME FOR SCHOOL	£ 852,561.00	£ -	£ 852,561.00
UNIT COST PER PUPIL PER YEAR	£ 3,739.30	£ -	£ 3,739.30

Table 2		
Capital costs	School proposed for closure	Receiving school

Capital Life Cycle cost	£	-	£	-
Third party contributions to capital costs	£	-	£	-

Annual Property costs incurred (moth-balling) until disposal	
property insurance	£ -
non domestic rates	£ -
water & sewerage charges	£ -
energy costs	£ -
cleaning (contract or inhouse)	£ -
security costs	£ -
building repair & maintenance	£ -
grounds maintenance	£ -
facilities management costs	£ -
Other	£ -
TOTAL ANNUAL COST UNTIL DISPOSAL	£ -

Non-recurring revenue costs	
	£ -
TOTAL NON-RECURRING REVENUE COSTS	£ -

Impact on GAE	
GAE IMPACT	£ -