

PERTH AND KINROSS COUNCIL
EDUCATION AND CHILDREN'S SERVICES
OPTIONS APPRAISAL REPORT
BLAIRINGONE PRIMARY SCHOOL



1. Introduction

The Council's Corporate Plan identifies the vision of *'a confident and ambitious Perth and Kinross with a strong identity and clear outcomes that everyone works together to achieve. Our area will be vibrant and successful; a safe secure and healthy environment; and a place where people and communities are nurtured and supported'*.

This strategic approach embraces the vision for our area, our communities and our people as outlined in the Corporate Plan. Our key service priorities support the delivery of our commitments in the Community Planning Partnership's Single Outcome Agreement and Corporate Plan, helping Education and Children's Services to focus on the local outcomes that will achieve meaningful improvements for the area, our local communities and our citizens.

Councils, as Education Authorities, have a statutory duty in terms of the Education (Scotland) Act 1980 to make adequate and efficient provision of school education across their entire area for the current school population and future pattern of demand.

Councils also have a statutory responsibility in terms of the Local Government in Scotland Act 2003 to achieve best value.

The school estate is a significant and valuable asset to the communities of Perth and Kinross. From 2017 to 2023, the Council will invest £141m in the school estate, including a number of new or replacement primary schools and a substantial upgrade programme for secondary schools. In addition a new £32.5m secondary school at Bertha Park will become operational in August 2019.

The School Estate Strategy ([Report No. 12/370 refers](#)) sets out the Council's aspirations for our schools, and in particular the high value we place on learning, through our vision for well designed, maintained and managed schools. The [School Estate Management Plan](#) details how we plan to deliver the strategy.

It is important, in light of the significant investment and cost associated with the school estate, that it is managed in an efficient and effective manner, and that the priorities which are addressed meet the wider strategic objectives of the Council and the needs of our communities.

2. Background

2.1 Transformation

There are significant challenges for managing the school estate over the coming years. These include changing demographics including population growth, and house building in certain locations and reduction in population in other areas. This has led to an 'imbalance' in occupation of the school estate, with roll pressures in some urban schools and under-occupation in some rural schools.

There is also ongoing deterioration in building infrastructure, pressure on planned maintenance budgets, increasing revenue costs and the expansion of Early Learning

and Childcare which are challenging in terms of funding and maintenance of the school estate.

The Council's Transformation Strategy 2015-2020 'Building Ambition' and Organisational Development Framework were approved by Council on 1 July 2015 ([Report No 15/292](#) refers). Together they detail how Perth and Kinross Council will deliver transformation over the next five years. Accompanying the strategy is a programme of major reviews which are considered to be key drivers and enablers of transformation across the organisation.

As part of the Council's Transformation Programme 2015-2020, a review of the school estate was approved. On 24 August 2016, the Council approved the report "Transformation – School Estate Review" ([Report 16/347](#) refers). This report proposed principles to be used to prioritise investment and as a basis for a high level review of the school estate. The purpose of the transformation review is to support the delivery of better outcomes for all of our young people through more effective use and management of the school estate.

2.2 Basis of review

The principles approved as a basis for the review are:

- (i) Every school should be rated as A or B ie at least satisfactory for condition and suitability;
- (ii) Schools should have an occupancy rate where possible greater than 60% of the capacity and ideally should be operating at between 80% and 100% capacity; and
- (iii) Life expired buildings within the school estate should be prioritised for replacement.

2.3 Options Appraisal

This report is the options appraisal for Blairingone Primary School. This will be submitted to Lifelong Learning Committee of the Council which will determine whether any statutory consultation will proceed.

2.4 Inclusion of Blairingone Primary School

On 2 November 2016, the Council approved the report "Securing the Future of the School Estate – Next Steps" ([Report 16/485](#) refers). This report detailed the outcome of the high level review and proposed to proceed with further work on the schools which did not meet the suitability, condition or occupancy principles.

In this report, it was agreed that an options appraisal should be carried out on Blairingone Primary School due to under-occupancy.

The school had a pupil roll of 7 (Census¹ 2015) and an approved capacity of 25 giving an occupancy level of 28%.

¹ An annual pupil census in publicly funded schools in Scotland is carried out every year for publication by the Scottish Government. This usually takes place in September.

Blairingone Primary School had 4 pupils as at Census 2017 and an approved capacity of 25 giving an occupancy level of 16%.

2.5 Legislation

The Schools Consultation (Scotland) Act 2010 provides a strong, accountable statutory consultation process that local authorities must apply to their handling of all proposals for school closures and other major changes to schools. These consultation processes are expected to be robust, open, transparent and fair, and seen to be so. They are also expected to be consistent across Scotland.

The 2010 Act makes special arrangements in relation to rural schools, establishing a presumption against closure of rural schools. The result of this is that education authorities must have special regard to a number of factors before formulating a proposal to close a rural school and in consulting on and reaching a decision as to whether to implement a rural school closure proposal. These factors are:

- Effect on the Community
- Effect on Travel Arrangements
- Educational Benefits

The duties are outlined in the [Schools \(Consultation\) \(Scotland\) Act 2010](#) and the accompanying [Statutory Guidance](#).

In order to ensure a robust approach to each option appraisal carried out under the School Estate Review the factors that require to be considered as part of a rural school closure will be adopted in all cases.

The Education (Scotland) Act 2016 amends the Standards in Scotland's Schools Act 2000 by adding in new duties to address inequality of outcome. These duties apply in different ways to both Scottish Ministers and education authorities.

Where the education authority is making or implementing strategic decisions about school education, it is required to have due regard to the need to carry out its functions in a way which is designed to reduce inequalities of outcome. This is particularly directed in the Act towards pupils who experience those inequalities through socio-economic disadvantage, but there is also a power to extend the range of pupils who are covered by this duty.

In addition, the [Community Empowerment \(Scotland\) Act 2015](#) sets out a new right for community organisations to request the transfer of local assets into local community ownership/management. Public bodies including Councils must consider such requests and respond within a reasonable timescale to them.

2.6 Community Engagement

The Statutory Guidance promotes informal consultation or “pre consultation” with communities regarding a proposal before a formal 2010 Act proposal paper is formulated. The Statutory Guidance recommends ‘early engagement with the local community’ with a view to:

- ‘establishing possible alternatives’;
- ‘information gathering and sharing in advance of a statutory consultation’;
- ‘engaging and empowering communities to understand and help shape the proposals that affect them’.

Details of the feedback from the community sessions are contained in Appendix 1. Relevant feedback is also referred to in the later sections of this document, to provide the community view of the impact of the options. The feedback which is detailed in the Appendix has been issued to the Parent Council, Headteacher and Community Council and published on the Council website.

The key themes in the feedback from Blairingone Primary School were:

- The school is a good school;
- Blairingone has lost many of its amenities and the school is the last community resource/asset that the village retains;
- The lack of amenities and services including public transport must be addressed if small rural communities are to thrive;
- Planned new housing will increase the roll of the school;
- A catchment review could increase the school roll and make the school sustainable; and
- A nursery or after school club would encourage parents to enrol pupils in Blairingone.

3. Blairingone and the Local Area

3.1 Local Area and Community

The small settlement of Blairingone is situated on the western boundary of Perth and Kinross, approximately 10 miles west of Kinross.

Blairingone is a former mining village and has been the subject of limited growth over the past 20 years.

The nearest local amenities for the community, other than the school, are in Dollar in Clackmannanshire, which is approximately 3 miles from Blairingone. Dollar has a doctor’s surgery, dentist, pharmacist, post office and a number of shops. In Crook of Devon, which is approximately 4.7 miles away, there is a village hall for community use, a village store including post office and an inn.

At the community drop-in sessions, people were asked to describe the community, and some information on the community was also provided through comments on the options. Some views were as follows:

- *Blairingone is a friendly and active community but the school is the only hub left for the village. Which will become a commuter hamlet with no attractions for people to move here;*
- *Small village with static population;*

- *In my opinion the reason for lack of new families in the village is that we have very little to offer new residents. We need more amenities if we are to grow as a village;*
- *No services – no pub, no shop, no public transport;*
- *School numbers have decreased over time. Farm estates being sold off ie. Solgirth, Arndean. Children of farm workers used to come to Blairingone Primary. Parents in the local area perhaps send their children to private school in Dollar;*
- *There are already plans for housing expansion in Blairingone and this should be expedited.*

3.2 Location of School

The school is situated on the outskirts of the village on the A977.

The school lies approximately 7.8 miles² from Cleish Primary School and approximately 4.5 miles from Fossoway Primary School. Strathdevon Primary School, which is in Dollar, is approximately 3 miles away.

The Scottish Government’s Rural School List 2017 classifies Blairingone Primary School as “accessible rural” school under Section 14 of the Schools (Consultation) (Scotland) Act 2010. The classification is based on two main criteria, settlement size and accessibility based on drive time. For Blairingone Primary School the classification criteria is “areas with a population of less than 3,000 people and within a 30 minute drive time of a settlement of 10,000 or more” (Source: Scottish Government Rural School List 2017).

3.3 Population

Data on pre-school children registered with GP practices living in the Blairingone Primary School catchment shows that although potential P1 intake numbers have remained relatively low over the last few years, they are much higher than the pupils who are attending the school.

	2011	2012	2013	2014	2015	2016	2017
P1 aged pupils due to attend Blairingone Primary School	2	6	2	5	2	4	4

Table 1: P1 aged pupils living in Blairingone catchment area

3.4 Socio Economic Factors

The Council uses the Scottish Index of Multiple Deprivation (SIMD) and ACORN data to understand levels of deprivation across Perth and Kinross and also in individual schools. Both sets of data are based on address. Appendix 2 explains SMID and ACORN.

² All approximate distances sourced from Google Maps

Blairingone Primary School does not receive Pupil Equity Funding (PEF). PEF is provided as part of the £750m Attainment Scotland Fund which will be invested over the current Parliamentary term to tackle the poverty related attainment gap.

There are no pupils attending Blairingone Primary School who are considered as coming from socio economically deprived households on the basis of SIMD and ACORN data.

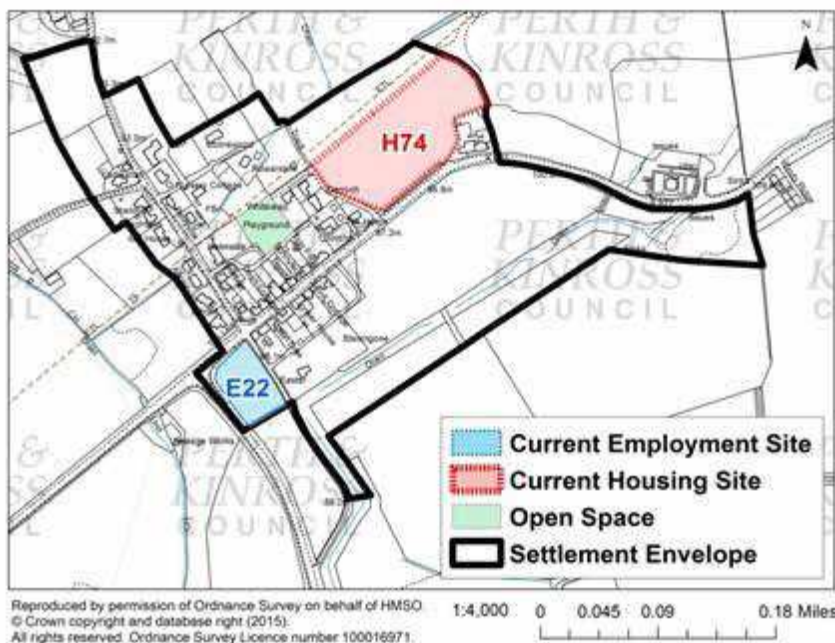
3.5 Development, Housebuilding and Employment

Information received from Perth and Kinross Council Business Growth Team indicated that there are no significant new business activities in the Blairingone area.

The current Local Development Plan (LDP) was adopted in 2014 and the Council is required to keep it up to date and review it at a maximum of five year intervals.

The adopted LDP included a potential housing site for 30 houses in the village of Blairingone (site H74). The site was identified to support local aspirations to boost the school roll. Although the housing site was identified, due to concerns over ground stability as a result of past mine operations the site was not considered to be effective.

It should be noted that this site has been planned for a number of years without any development taking place. It was noted in the 1994 Local Plan when it was site H32. It also appeared in the 2001 LDP as site H12 but was removed in 2004 after a public local inquiry. It returned in 2014 as site H74.



The Proposed Local Development Plan (LDP) 2 was approved for consultation by Council on 22 November 2017. The aspiration is to have a final LDP to adopt by Spring 2019.

A more flexible LDP2 framework for the landowners/community at Blairingone is being proposed due to the concerns over the effectiveness of site H74. The Council's proposed LDP2 proposes expanding H74 to create a new site named MU74. MU74 will include a maximum of 30 homes i.e. the same number of homes as in the current LDP, up to 2028. It will also allow the opportunity for other uses such as community and small scale retail to come forward.

The capacity restriction of 30 houses will form part of the adopted LDP2, if the site is not recommended for deletion, as no objection to this restriction has been raised by its consultation.

The table below shows an optimistic scenario for site MU74. The assumptions made in discussion with Planning Officers are based on an average build out rate of 2 houses per year.

Action	Date
LDP2 Adopted	April 2019
Developer submits planning application	April 2019
Planning application approved	June 2019
10 houses completed	June 2024
20 houses completed	June 2029
30 houses completed	June 2034

In addition to H74/MU74 there are a number of small sites which are expected to build out in the next 4 to 6 years.

Further information on these sites is provided in Appendix 6. This information indicates that planned housebuilding is unlikely to build out within timescales provided in the Housing Land Audit (HLA)³ as many have been in the planning stage for a number of years.

Housebuilding Summary

After further analysis of individual planning applications and discussion with Planning the programming contained within the HLA for the small sites is felt to be optimistic. As detailed in Appendix 6 planning applications have been ongoing for some time with little construction taking place.

It is likely that if H74/MU74 goes ahead this will impact on the development of the small sites and vice versa with the small sites impacting on H74/MU74 as the market in this area is limited.

In terms of pupils from house building, a factor of 0.27 children per house is used by ECS in forward planning, therefore there could be 2-3 additional pupils at the school by 2024.

In summary, house building in the Blairingone Primary School catchment area will continue to be limited with few if any additional pupils for the school.

³ The Housing Land Audit is compiled by PKC Planning on an annual basis, it estimates build out rates for sites over 5 houses across Perth and Kinross.

3.6 The School within the Community

At the pre-consultation the community were asked to describe the community within Blairingone and their thoughts on Blairingone Primary School as part of the community, some of the comments are as follows:

- *The school is the only focus for the community in Blairingone. Without it there would be very little opportunity for the locals to come together;*
- *The school is the heart and soul of our community, they attend events, support fundraising. It is all we have. Without it we would just be houses. The community want to see more families building the community for the future. Our school = our community!*
- *Having lived in the village for 5 years, I feel the school could play a much larger part in the community – only ever been used for Council meetings;*
- *School gives village identity.*

The school pupils invite the community into the school for plays, fundraising events and other events during the school term. The Community Council use the school for their meetings on occasion. The meetings alternate between Fossoway Primary School, Blairingone Primary School and Powmill Moubray Hall.

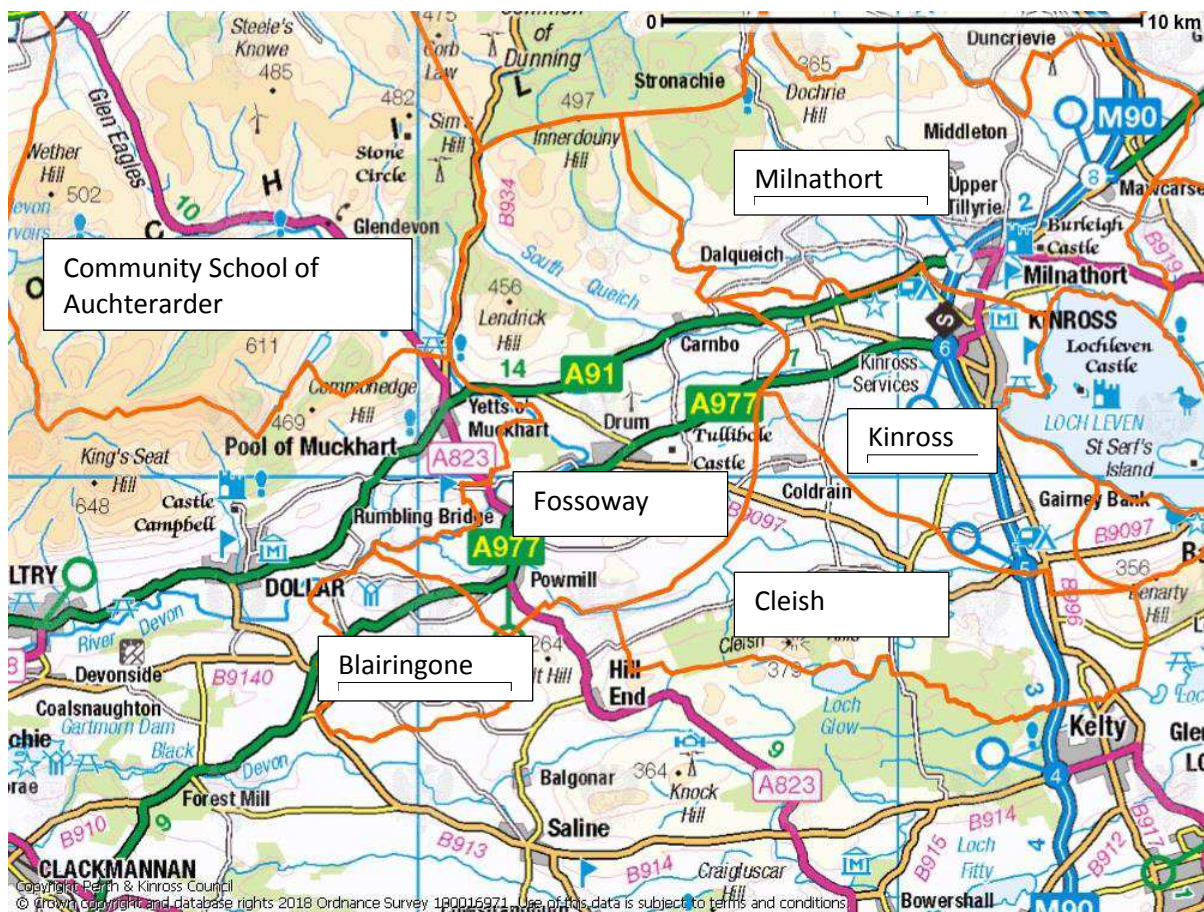
There have been no other formal lets of the school recently.

4. Blairingone Primary School

4.1 School Catchment

The school catchment area boundary extends to Arndean in the North, Newhall to the South, Tethyknowe to the East and Mains of Blairingone to the West.

The catchment for Blairingone Primary School adjoins the catchment for Fossoway Primary School. It also has boundaries with Clackmannanshire and Fife.



4.2 School Capacity

The current school capacity is 25 pupils. This is based on a single classroom school. A layout of the school is attached as Appendix 3.

4.3 Pupil Numbers

The tables below show the historic, current and projected pupil numbers for Blairingone Primary School.

School Roll Pupil Numbers – Current and Historic Data

(Based on Census)

Primary Classes	2011	2012	2013	2014	2015	2016	2017
Capacity	25	25	25	25	25	25	25
Pupils in school	11	10	6	4	7	7	4

Table 2: Historic school roll pupil numbers

As table 2 indicates, the school roll has been low for a number of years. Table 3 below shows that this is primarily due to parents not choosing to send children to the school.

Primary Classes	2011	2012	2013	2014	2015	2016	2017
P1 aged pupils due to attend Blairingone Primary School	2	6	2	5	2	4	4
P1 intake at Blairingone Primary School	2	0	1	0	1	1	0

Table 3: Historic P1 intakes, possible v's actual

Information provided by the NHS indicates there are 14 children living in the Blairingone Primary School catchment area due to attend P1 in the next 4 years.

Table 4 below provides more detail on recent attendance at Blairingone Primary School. The table indicates that the number of primary school pupils living in the area attending PKC schools has increased in recent years. Some pupils are attending other schools in Perth and Kinross but also schools out with Perth and Kinross.

Currently 5 pupils from the catchment area attend Strathdevon School in Dollar. It is possible that other pupils attend Dollar Academy, however this information is not available.

	Census 2014	Census 2015	Census 2016	Census 2017
Primary School Aged Pupils living in Blairingone Primary School catchment attending PKC schools	3	6	7	12
Blairingone Primary School Catchment pupils attending Blairingone Primary School	2	3	4	4
Pupils from outwith Perth and Kinross attending Blairingone Primary School	2	4	3	0
Pupil Roll Blairingone	4	7	7	4
Blairingone Primary School Catchment pupils attending other PKC schools	1	3	3	8

Table 4: Attendance at Blairingone Primary School and other schools

Future Pupil Projections

The methodology used for pupil projections allows Education and Children's Services to project a detailed year by year analysis for each school catchment.

The methodology applied for projecting future P1 intakes uses aggregated GP registration data. The anonymized data, sourced from the NHS reflects children registered with a GP, within specific school catchments areas.

P1 pupils included within the data received from the NHS do not always decide to attend their catchment school. This is primarily because parents make placing requests to other schools or elect to send their child to a denominational school.

As a result of these movements the P1 data is adjusted taking into consideration the movement of pupils in previous years. The adjusted data is the primary source of information for forward planning.

It should be noted that due to the fluid nature of pupil movements within the school estate, for a number of different reasons, predicting future years' schools rolls will not be exact. It is however accurate enough to provide valuable information on forward planning for the school estate.

School Roll – Future Pupil Numbers Projected

	2018/ 2019	2019/ 2020	2020/ 2021	2021/ 2022
Blairingone Primary School Capacity	25	25	25	25
Blairingone Primary School Roll	4	4	4	5

Table 5⁴: Projected school roll

The table above assumes that some under 5's living in the area currently will not attend Blairingone Primary School on the basis of previous P1 intakes.

Information on house building is detailed in section 3.5. The projected future pupil numbers for the school does not include pupil numbers from house building. This is because the house building has been planned for some time without sites developing and it is felt the programming contained within the HLA is optimistic.

4.4 Building information

The school site and the school building are owned by Perth and Kinross Council. There are no title restrictions which would prohibit the Council from selling the site. There is no record of the building, or any part of the building being listed with Historic Scotland.

Suitability is an assessment of the school as a whole, its buildings and its grounds and the impact they have on teaching and learning, leisure and social activities and the health and wellbeing of users. The overall suitability of the building is rated 'B' (performing well but with minor problems).

A survey of the building was carried out in January 2017 to assess the current condition of the building. Condition is an assessment of the physical condition of the school and its grounds. The condition of the building is rated 'B' (Satisfactory – performing adequately but showing minor deterioration). A further 'desktop' Mechanical and Electrical (M&E) survey was undertaken in November 2017. The condition has not been adjusted to take this M&E survey into account, as the Council along with other Scottish Councils is about to update the means of assessing condition. The works required as a result of the M&E survey have been included in

⁴ The projected school roll is based on actual P1 registrations as at 23 February 2018. Data provided by the NHS indicated 6 P1 pupils were likely to start at the school in August 2018. Currently no pupils are registered to start in P1. Parents of 2 pupils due to attend P1 living in the Blairingone catchment area have made placing requests to Fossoway Primary School.

the potential future spend, however. These works include ventilation, heating systems, insulation and building fabric improvements.

Planned and unplanned maintenance on the school building over the last 3 years was £21,413.

4.5 Financial Information (Staff, Transport and Other)

The revenue (or running) cost for financial year 2017/2018 for operating Blairingone Primary School is £115,574. This includes staff and building costs such as energy and cleaning. The cost of upgrading the building as detailed in paragraph 4.4 above is £245,424.

A financial overview is contained in Appendix 4.

5. Options for Consideration

A number of options are considered for the future of Blairingone Primary School as part of this options appraisal;

- Option 1 – School remains open;
- Option 2 - Consider mothballing the school – move pupils to Fossoway Primary School;
- Option 3 - Consider closing the school – move pupils to Fossoway Primary School; and
- Option 4 - Catchment area is reviewed to determine whether this would increase the school roll sufficiently to ensure the future sustainability of the school.

In considering the options below, account was taken of the fact that there is a presumption against closure of a rural school. As part of the options appraisal, the “rural school factors” specified in the School Consultation (Scotland) Act 2010 have been given special regard. These are:

- Effect on Community
- Effect on Travel Arrangements
- Educational Benefit

5.1 Option 1 – School Remains Open

Community Impact

People supported the retention of the school, for the good of the community and the local children who do attend the school; however there was also recognition that the pupil numbers were low.

- *The village needs a school if it is to survive as a village and encourage house building and families to move into the area.*
- *Option 1 – will increase the possibility of closure – not acceptable.*

Pupil Impact/Pupil Roll

There were differing views on this option in relation to pupil impact. There are views that the small numbers at Blairingone Primary School benefit pupils but also that the opposite is true.

- *The children who are there thrive in the school and would suffer having to travel further to school, especially the young ones;*
- *I know a pupil at the school and I know the parents are happy with their children's educational attainments. The pupil enjoys that the school is small and has a supportive nurturing atmosphere;*
- *The status quo is not acceptable because such low numbers do not provide the necessary educational and social interaction in peer groups which are crucial for the successful development of the child;*
- *Blairingone is our catchment school; our children are and we live very close to the school. I have enrolled our year old in P.... at Fossoway primary and will request the same for his sibling; I couldn't consider a school with such low numbers. I fully believe the educational experience requires peer learning as well as teacher student learning to be a positive and successful process. Attending a school with little or no children of the same age will not help develop vital social skills and I fear the transition to high school would be made much more difficult without these skills....*

The pupil roll projections (Table 5) reflect that there is no evidence to suggest that the roll will significantly increase in future years. Low future pupil numbers are unlikely to lead to a sufficient increase to make the school roll sustainable.

It is likely that house building in the Blairingone Primary School catchment area over the next 4 years will be limited and will result in few if any additional pupils for the school as a result.

Financial Impact

The financial implications of retaining the 'status quo' for the school are a continuation of the current running costs of approximately £115,574 per annum.

There is a capital cost of approximately £245,424 required to upgrade the building in future years.

Assessment of Option 1

This option will not affect the community, travel arrangements or current pupils.

The reason for taking forward an options appraisal for Blairingone Primary School was that pupil numbers had been consistently low over recent years and there was concern over the sustainability of the school. The pupil roll projections (Table 5) reflect that there is no evidence to suggest that the roll will significantly increase in future years. The key issue is that out of 17 children who could attend the school currently, 12 of them attend neighbouring schools. In addition, low future pupil numbers are unlikely to lead to a sufficient increase to make the school roll sustainable.

It has not been possible to identify other steps which could increase the roll, whilst maintaining the status quo in terms of catchment area. This is therefore not considered a reasonable option.

5.2 Option 2 - Consider mothballing the school – move pupils to Fossoway Primary School

The term 'mothballing' is used, according to Scottish Government guidance, to refer to a temporary decision to close a school where the roll has fallen to zero. It recognises the permanent impact on a community of closing the school and seeks to avoid that final decision until there is sustained evidence of no demand. It can be an appropriate and positive step where there is some prospect of revival in a community. All parents must agree to a school being mothballed.

The Statutory Guidance for the Schools (Consultation) (Scotland) Act 2010, in relation to mothballing, states “the maximum length of its duration is likely to depend on the location of the school and the desirability of maintaining capacity to re-open a school there, but it is unlikely that it should exceed 3 years in areas that are not very remote.”

Community Impact

The majority of feedback was against mothballing:

- *The community would disappear overnight – saying the school would possibly re-open if needed is not viable. People would leave the area and homes would appeal;*
- *Mothballing the school would not be a good option as it would be the first step to a complete closure;*
- *The school numbers have fluctuated in the past and the numbers projected for the future look better so it would seem to be the wrong time given our possible expansion of housing in the area and*
- *Mothballing best option – to wait until houses are ready. Won't happen in next 3 years.*

Pupil Impact/Travel Arrangements

If Blairingone was mothballed, pupils would be accommodated at Fossoway Primary School which is approximately 4.5 miles away and is the nearest school in Perth and Kinross. Four out of 5 of the children at Blairingone are within walking distance of the school. Children would have to travel between approximately 4.2 miles and approximately 6.4 miles to attend Fossoway Primary School. The maximum time spent travelling on the bus would be 27 minutes for the child who has to travel furthest. In some other more rural areas within Perth and Kinross pupils are travelling greater distances on more minor roads to reach their school.

Pupils would be entitled to transport if they live more than 2 miles away.

There were two comments from the community engagement session on the effect of change on children related to mothballing:

- *The other options mean major change for my son and children like him with additional needs, who have not thrived in larger schools and who struggle with change. This would lead to increased anxiety and a possible drop in development;*
- *If school was mothballed, if school were to reopen it would mean moving children back after setting them in another school.*

School Environment

The school environment of Fossoway Primary School is detailed in section 5.3.

Pupil Roll

If Blairingone Primary School is to be mothballed, current and new pupils would attend Fossoway Primary School, the projected roll at Fossoway Primary School would be as follows:

	2018/ 2019	2019/ 2020	2020/ 2021	2021/ 2022
Fossoway Primary School Capacity	150	150	150	150
Blairingone Primary School Pupils	4	4	4	5
Fossoway Primary School Pupils	113	108	110	112
Fossoway Primary School Roll with Blairingone Primary School Pupils	117	112	114	117

Table 6: Fossoway Primary School pupil roll (current and future)

Financial Impact

The revenue savings generated from mothballing Blairingone Primary School amount to approximately £85,626 annually. This is made up of staff and building costs however it takes account of transport costs for current pupils to attend Fossoway Primary School.

Environmental Impact

There will be reduced energy consumption if the school is to be mothballed. Children would travel further to school in Crook of Devon, however most would be provided with transport, including those who already attend Fossoway Primary School as a placing request currently.

Option 2 - Assessment

The roll at Blairingone Primary School is unlikely to exceed 5 pupils in the next 4 year period. There is evidence that pupils from the catchment area currently choose to attend other schools in the area instead of Blairingone Primary School and as set out in section 4.3, this will be for a range of reasons. In addition, as mentioned in section 3.5, it is likely that house building in the Blairingone Primary School

catchment area over the next 4 years will be limited with few if any additional pupils for the school as a result.

It is also possible that if the school is mothballed, pending an increase in pupil numbers, children will become settled at Fossoway Primary School and would not return to Blairingone Primary School.

For the reasons above, mothballing the school in anticipation of increased pupil numbers due to house building is therefore not considered a reasonable option.

5.3 Option 3 - Consider closing the school – move pupils to Fossoway Primary School

Community Impact

The majority of people disagreed with this option because of the impact on the community:

- *Community gone! Blairingone would become a place/road with houses and nothing else!*
- *Blairingone has already lost pub, shop, bus service. Hard to encourage new families into village. If school were to close the last community hub would be gone;*
- *It would be a real shame to see the school go; this brings a sense of community to the area. Seeing the children go off in the morning and come home at night. The school is required for the redevelopment of Blairingone as this will be a major attraction to the area for families;*
- *Very short sighted to close school when so much potential is offered. With the Development of village, where would children get schooled?*

There were comments from the community that there was a lack of public transport available to them in Blairingone and they felt without a school it would become a place just to drive through. There was a sense that new families would not move to the area as there are no other amenities in the village to attract them.

Pupil Impact/Travel Arrangements

A number of people, including parents, mentioned the impact of closure on the education of children. There were differing views:

- *Closing the school and moving pupils does not put the child's welfare at the centre. If not felt appropriate to move children if boundaries moved why is it ok to move because LA decide financial cuts means school closes. GIRFEC indicators apply in both cases equally and should not be manipulated for financial reasons;*
- *The other options are to close the school it's a very good school why should it close the education of the children should be more important than the closure of the school;*
- *Although Blairingone provides a very nurturing and happy environment for the children, because of its size, there are many opportunities for interaction and*

learning that aren't available. My main reasons for closure are to allow the children:

- to have contact and interaction with other children of their own age*
- to better develop social skills essential for future happiness and success at school*
- to get exposure to different teaching styles*
- to receive more teaching time*
- to access better resources*
- to make more friends;*
- *The current situation is detrimental to both the educational and social development of the children involved.*

If Blairingone Primary School was closed, pupils would be accommodated at Fossoway Primary School which is approximately 4.5 miles away and is the nearest school in Perth and Kinross.

Children would have to travel approximately between 4.2 miles and 6.4 miles to attend Fossoway Primary School, with an approximate time of 27 minutes spent travelling on the bus for the child who has to travel furthest.

A number of people commented on pupils having to travel to school:

- *Moving the children to Fossoway would mean extra travel on the roads;*
- *Would result in any primary school children within the Blairingone area having to travel over four miles to school. Not a great prospect particularly in inclement weather;*
- *There will surely be a cost to the Council if they have to provide transport to and from schools out with Blairingone for local children and it takes them away from the village community.*

Staff in Perth and Kinross already travel throughout the area to work in schools.

School Environment

Fossoway Primary School is a 6 classroom school, with a shared hall for dining and PE, office accommodation, toilets and cloakrooms and a library. Two of the classrooms are situated alongside the nursery. A floorplan of the school can be found in Appendix 5.

Fossoway Primary School has a capacity of 150 pupils. The current roll at Fossoway Primary School is 107 pupils (Census 2017). The school is currently operating with 5 classes.

Nursery pupils are not included in school capacities or school rolls.

Fossoway Primary School has a nursery provision which currently offers both morning and afternoon sessions. Each session provides for a maximum of 20 children from aged 3 until they attend school. There are currently 35 nursery children registered at the school.

The class composition in recent years at Fossoway Primary School is as follows:

Class	2014/15	Class	2015/16	Class	2016/17	Class	2017/18
P1/2	17	P1/2	16	P1/2	21	P1/2	20
P2/3	23	P2/3	19	P2/3	24	P2/3	17
P4/5	23	P4	22	P4/5	23	P3/4	24
P5/6	24	P5/6	23	P5/6	23	P5/6	22
P7	20	P6/7	23	P7	25	P6/7	24

Table 7 – class composition

The average class size in Perth and Kinross primary schools is 23 pupils (Census 2017). The maximum class size for composite classes is 25. The maximum class size for P1 is 25, P2 and P3 is 30 and P4-P7 is 33.

Fossoway Primary School has been graded ‘A’ for suitability (Good – Performing well and operating efficiently - the school buildings and grounds support the delivery of services to children and communities).

Fossoway Primary School was surveyed on 27 April 2016 and was graded condition ‘B’ (Satisfactory – performing adequately but showing minor deterioration).

Financial Impact

The revenue savings generated from closing Blairingone Primary School amount to approximately £85,626 including mothball costs annually. This is predominately made up of staff and building costs and is net of transport costs. The capital cost of upgrading the building of £245,424 would not be required.

A capital receipt would be forthcoming if the building was sold or income would be generated through a lease.

Refer to Appendix 4 for detailed financial summary.

Environmental Impact

There will be environmental benefits from a reduction in energy consumption if the school is to be closed.

There is little environmental impact in relation to the transport of pupils or the travel arrangements of staff due to the relatively short distances and small numbers involved.

Option 3 - Assessment

The community generally support the school remaining open; however there was also a view that reflected on the advantages to the pupils, of attending a bigger school. The community commented that there was a lack of amenities in the village and this puts families off moving to Blairingone. This is not borne out by the data on pupil numbers detailed in section 4.3 which shows that there are 17 primary school

pupils living in the area. There is perhaps a correlation with families choosing to send children to school in villages where there are other amenities which they use.

The school has not been used for lets recently by the community with the exception of Fossoway Community Council. There is, therefore, likely to be little impact on other users of the school if the school were to close. It is unlikely that closure of the school would result in the building being used for the community, as other community facilities such as the pub and village hall have closed down. The closure of these facilities would appear to indicate that there has not been enough demand to sustain them, possibly due to there being more and better facilities available in Dollar and Crook of Devon.

Analysis of recent pupil information shows that the school roll is low primarily due to parents requesting placements at other local schools, including schools in other Local Authority areas. Currently only 5 out of 17 children living in the catchment area attend Blairingone Primary School. It is likely that house building in the Blairingone Primary School catchment area over the next 4 years will be limited and will result in few if any additional pupils for the school as a result.

It is considered that closure of the school is a reasonable option because of an unsustainable school roll. This option also has the benefit of supporting the sustainability of Fossoway Primary School, which is approximately 4.5 miles from Blairingone Primary School and is also a rural school.

5.4 Option 4 - Catchment area is reviewed to determine whether this would increase the school roll sufficiently to ensure the future sustainability of the school

A catchment review can, in principle, be a reasonable option in some cases to increase the potential roll and, therefore, sustainability of a school.

Where there is evidence to indicate that a catchment review may be a potential option to support a sustainable increase in the roll of a school, careful analysis is required in each case to ascertain whether a sustainable increase in school roll could be achieved. There is also a need to assess whether a review may have a detrimental impact on the sustainability of neighbouring schools and travel distances for pupils.

Community Impact

This option was by far the preferred option of the people who took part in the sessions and completed the on-line questionnaire, with 44 comments in support of this option. Many of the comments focused on the school rather than the community impact.

- *Assuming the school is viable to accommodate 25 pupils – this would be a positive move to enhance the community and develop the village potential. Care would be needed to manage the road traffic locally;*
- *Make sense! Attract larger numbers! Create an even bigger and stronger community;*

- *It would be sad to see the school close as it is the only active life in the village. I would suggest the school needs some good PR to get more pupils – maybe move the boundaries;*
- *Blairingone School has served the community well for many years. It would be a great shame if it were to close now and would certainly have a detrimental effect on anyone considering buying a home in the village, particularly in the light of the proposed development plans for housing.*

Pupil Impact

Some comments associated with this option relating to pupil impact are as follows;

- *Great idea! Encourage more families into Blairingone Primary School. Speaking to other mothers they would have their child at Blairingone if they were in catchment (Powmill);*
- *I am happy with the educational attainment provided by Blairingone Primary School as it provides a very supportive atmosphere for learning. This is particularly important at a time when school classes are generally getting bigger. A catchment area review would potentially increase the school roll to ensure that new building plans should they materialize would secure the future of the school within the community;*
- *Open up schools valuable education to a wider area. Excellent education at this school;*
- *If extending the catchment area increased the school intake to a maximum level then I see that as a feasible option.*

Potential Catchment Changes

The area to the east of Blairingone as far as Powmill was identified as a potential extension to the catchment area, as it is the only area of Perth and Kinross that borders Blairingone Primary School's current catchment area.

Data gathered from the NHS in relation to children under 5 has been used (as per paragraph 4.3) to identify potential pupil numbers. This information has been aggregated by the NHS for the purposes of this exercise because numbers are small ie <5 children. Therefore the data relating to pre-school children as a whole is used, rather than pre-school children in individual year groups.

The outcome of the catchment analysis is shown in table 8.

Catchment Area Proposed	Other School Catchment Impacted	Primary School pupils in area	Pre-5's in area	Summary
Moving existing catchment boundary to the east to include Powmill	Fossway	15	< 5	Moving this single boundary would not be sufficient to make Blairingone Primary School sustainable due to the low number of under 5's in the combined catchment of Blairingone and Powmill.

Catchment Area Proposed	Other School Catchment Impacted	Primary School pupils in area	Pre-5's in area	Summary
				If the primary pupils were to move the school roll could be sustainable. Travel would be approximately the same.

Table 8: Catchment review summary

Catchment Review Survey

Although the numbers of pre-school age children living within the potential catchment area is very small, a survey was distributed to parents/carers of primary school age pupils and nursery pupils attending Fossoway Primary School who live in the proposed review area. It was also sent to the manager of a private nursery in Fossoway to distribute to parents from the area. The parents of most of the pupils and pre-school children in the table above should have received a link to the survey.

The purpose of the survey was to gain an understanding of whether this specific group of parents would be likely send their children to Blairingone Primary School if the catchment area was changed to include the area up to and including Powmill.

Powmill parents were consulted as this is the only Perth and Kinross school catchment area that adjoins the catchment area of Blairingone Primary School.

There were a total of 4 responses received. Out of the 4 responses, there were no parents of pre-school children; the parents all have school aged children.

In response to the question "would you choose to send your child/children to Blairingone Primary School if it was your catchment school?" 3 out of 4 respondents said no. The reason for this was due to the low numbers in the school.

- *The school is far too small for the provision of local children. It is (assumed this should read 'if it was') was to include the Powmill area it would only gain another 9 children which would still mean the school is far too small to offer the social as well as the curriculum that I believe my child already received from their local school;*
- *Lack of numbers was my biggest concern.*
- *As outlined before. A disruption like this would really not be good for him. He has 1.5 years left and needs to be settled for high school. Would not be happy about this.*

Respondents were also asked if they had any other comments, only one comment was received:

- *Think that Blairingone should close for the sake of disrupting 4 children over moving and upsetting many children.*

Option 4 - Assessment

Option 4 was the favoured option of the Blairingone community at the community engagement session and through the online survey.

The only option to extend the Blairingone Primary School catchment would be to remove the area from the boundary of Blairingone east to Powmill from the Fossoway Primary School catchment and add it to Blairingone Primary School catchment area. The maximum number of primary school pupils who could attend Blairingone Primary School currently from this area is 15. All of these pupils could choose whether to attend the new catchment school or not. There are less than 5 children living in this area under the age of 5.

New P1's would be expected to attend Blairingone Primary School as their catchment school unless they were successful with a placing request to another school.

Following the community engagement session a survey was compiled to consult with parents/carers in a specific area that would allow the catchment area of Blairingone Primary School to be expanded. Three out of 4 parents would not send their children to Blairingone Primary School if the catchment was changed.

The pupil population from the area east of Blairingone up to Powmill is not sufficient to increase the pupil roll at Blairingone Primary School unless a large number of the primary school pupils attending Fossoway Primary School from the area choose to move school or children from the Blairingone Primary School catchment area start to attend their catchment school. Parents would not be required to move primary age children from their current school when a catchment review takes place and generally parents are reluctant to do so. The survey did not evidence that Powmill parents would act contrary to this. There are not enough pre-school children to make the school sustainable.

In summary, it is unlikely that increasing the catchment area into Powmill will create a sustainable pupil roll for Blairingone Primary School. This option is therefore not a reasonable option.

5.5 Community Proposal

Community Proposal - A nursery class is included within Blairingone Primary School and the school remains open

At the community drop-in session a number of those who attended suggested that including a nursery within the school would increase pupil numbers in the school.

There are 14 children living in the Blairingone Primary School catchment area due to attend P1 in the next 4 years.

There is insufficient space within the school to accommodate nursery and capital funding would be required to create nursery accommodation in the adjoining school house building. It is not feasible to invest capital funding in this property when a sustainable nursery roll cannot be guaranteed.

In summary, it is not a reasonable option to consider creating a nursery class within Blairingone Primary School, due to low number of nursery age children living within the area.

Overview of Options

The outcome of the high level options appraisal is summarised below:

	Option Description	Outcome
Option 1	Do nothing	Rejected. Not a reasonable option due to not being able to maintain a sustainable school roll.
Option 2	Consider mothballing the school – move pupils to Fossoway Primary School	Rejected. Not a reasonable option due to not being able to develop a sustainable school roll in the next 2-3 years.
Option 3	Consider closing the school – move pupils to Fossoway Primary School	Accepted as a reasonable option for the following reasons; <ul style="list-style-type: none"> • Educational benefits to Blairingone Primary School pupils moving to Fossoway Primary School include peer support and learning groups across stages and between classes and early years provision with seamless transition to Primary 1. • Unsustainable school roll at Blairingone Primary School but promotes the sustainability of Fossoway Primary School.
Option 4	Catchment area is reviewed to determine whether this would increase the school roll sufficiently to ensure the future sustainability of the school	Rejected. Further consultation and assessment in relation to a possible extension to the catchment area to include Powmill was undertaken but it would not be possible to create a catchment which would develop a sustainable roll. Not a reasonable option

The outcome of the option appraisal recommends Option 3 – consider closing Blairingone Primary School, with pupils attending Fossoway Primary School.

6. Detailed Analysis of Reasonable Option: Consider closing Blairingone Primary School, pupils attend Fossoway Primary School.

This section provides a more detailed assessment of the option which is considered reasonable in the circumstances. It considers the “rural school factors” of community impact and impact on travel arrangements, as well as including an Educational Benefits Statement.

This is considered a reasonable option because parents are choosing to place their children at other primary schools and this has led to the school having very low pupil numbers.

A survey was carried out to gauge support for a catchment review among those who would be affected by this. There was little support for this. It is therefore unlikely that an expanded catchment area would make the school roll sustainable.

This option, if implemented, would support the future sustainability of Fossoway Primary School, which is approximately 4.5 miles from Blairingone Primary School. Fossoway Primary School is also a rural school.

6.1 Community Impact

Community Impact – Loss of the school

At the community engagement session there was much comment on the school being the only remaining amenity within the village. The community suggested that the lack of a school, transport and other amenities would deter families moving into the area. The data on pupil numbers would suggest however that there are families living in the area but that they are not attending the local school.

In 2017, the Council closed schools in Calvine (Struan Primary School) and Enochdhu (Straloch Primary School) after they had been mothballed for 5 years. The evidence from both areas was that families were not deterred from moving into the area by having to travel to a neighbouring village to access facilities. There are clear parallels with Blairingone in that the communities already travelled to other local communities to access services. Neither school/community was as accessible as Blairingone, which has a main trunk road (A977) running through the village and is only approximately 10 miles from Kinross and approximately 3 miles to Dollar. Fossoway Primary School is approximately 4.5 miles away.

Community Impact – Use of the building

There are no other public buildings in Blairingone. However, with the exception of Community Council meetings, there have been no regular lets of the school in recent years by the community. This indicates that the community does not rely on the school as a public/community facility at present. There is a Village Hall in nearby Crook of Devon and Fossoway Primary School is available for lets.

6.2 Impact on Travel Arrangements

The travel distance from Blairingone Primary School to Fossoway Primary School is approximately 4.5 miles with a travel time of approximately 9 minutes.

Travelling for primary school education is common across Perth & Kinross because of the geography of the area. Currently the pupils attending Blairingone Primary School journey between approximately 0.2 miles and 2.7 miles to and from school. Moving to Fossoway Primary School would mean pupil journey distances increase to between 4.2 miles and 6.4 miles each way which is not an unreasonable travelling distance to get to school. Time spent travelling on the bus would be approximately 27 minutes each way for the child who has to travel furthest. In some other more rural areas within Perth and Kinross pupils are travelling greater distances on more minor roads to reach their school.

Staff in Perth and Kinross tend to travel throughout the area to work in schools. Many staff do not live within the catchment area of the school they work in. 4.5 miles is a relatively short distance to travel in rural Perth and Kinross. It is therefore considered that there is very limited impact on staff travelling arrangements.

The community currently requires to travel to access other services such as GP and dental surgeries, shops and post offices. As the school is not generally used by the community, there should be no impact on travelling arrangements for any other users of the school's facilities.

6.3 Educational Benefits

This Educational Benefits Statement has been prepared having regard to the Guidance and Explanatory Notes published by the Scottish Government in association with the Schools (Consultation) (Scotland) Act 2010.

As required by the above Act, this Educational Benefits Statement is written from the perspective of benefits, should the preferred option outlined in the options appraisal proceed to a proposal paper under the Schools Consultation (Scotland) Act 2010, and subsequently be implemented.

Learning & Teaching

- Children attending Fossoway have access to a range of teaching and support staff from early years and primary. Fossoway has a nursery and five primary classes. This allows children to transition throughout the school as they get older and be taught by different practitioners in different settings.
- Pupils have access to early years provision within the setting of the school, allowing for seamless transition to P1, with pupils already familiar with the physical setting as well as the opportunity for regular work with primary peers.
- At Fossoway Primary School, staff are challenged and supported through a range of continuous professional development and review, which comes of having a Headteacher and five members of teaching staff, in five classes for 107 pupils. Staff collaborate across the school for planning, learning and teaching to

ensure children receive experiences that are relevant and present clear challenge and enjoyment. Flexibility in staffing at Fossoway means that good use can be made of the local context, for example by involving children in Outdoor Learning. Staff also work together to moderate standards of learning and achievement in the school to ensure that children make appropriate progress in a structured and progressive way through Curriculum for Excellence levels.

- A collegiate approach to professional engagement amongst all staff is evident within the school. They come together regularly to review and improve practice as a school, with partner services and other schools in the Local Management Group. There is a strong commitment across all staff to lead improvements in learning and teaching from evidence based research. This enhances the quality of learning and teaching through shared opportunities to develop effective approaches and to share and moderate standards. Currently, Fossoway primary school staff collaborate with other schools on Digital Learning, ensuring that staff share good practice across other schools in the area.
- Work is differentiated to adapt to pupils' needs and pupils benefit from being able to work on co-operative learning tasks with others. Flexibility in staffing allows staff to be creative in planning for children with additional support needs both universally and for targeted need, thus addressing potential barriers to learning.
- The team at Fossoway Primary School have developed a diverse range of family learning programmes to meet the varying needs of families in the community and draws on expertise and knowledge across the community to enhance the learning and experiences for children across the school.
- Fossoway Primary School affords the opportunity for all children to build relationships with different groups and individuals, develop a range of skills and undertake group responsibilities, which the larger class sizes enable. Pupils work in groups, at peer level and across all stages in the school and in mixed sex groups. This allows the sharing of ideas, peer support, informal mentoring and relationship building, all of which contribute to the whole school experience for all pupils.
- The school has support from a Pupil Support Teacher, allowing for specialist teaching, which not only benefits pupils with Additional Support Needs, but all other pupils.

Environment for Learning

The school grounds at Fossoway provide facilities for the pupils to experience a range of team and individual sports, such as football, netball and basketball.

Within the school grounds there are facilities to enhance imaginative learning and play, such as a climbing wall, and fort and garden.

Some classrooms are semi open plan, allowing the opportunity for children to work alongside each other in other classes and break out areas. These break out spaces

allow for flexibility in teaching methods and afford a range of learning opportunities, from working in small groups, to allowing children of different stages and classes to work together.

All classrooms have interactive screens, providing the opportunity for children to access the curriculum in modern and innovative ways, through the use of smartboards and interactive technology.

The school uses additional classroom space flexibly to offer nurture support, additional support for learning and a meeting space for working groups, meetings and collaboration with partners.

Fossoway Primary School is accessible for children and adults with Additional Support Needs. It is on one level and has fully accessible toilet facilities for children and adults.

Experiences and Opportunities

- The school has pupils of both sexes at each stage, allowing all pupils to interact and socialise with groups of children their own age and sex, at appropriate levels.
- The school has a house system that all children are members of, which enhances many aspects of school practice; including learning, promoting positive behaviour, buddying and mentoring, and school events.
- Pupil voice is evident at Fossoway Primary through the Learning Council, which allows them the opportunity to share and discuss learning across the school and identify areas for further improvements in the school.
- The school focuses on pupil led experiences and opportunities in a range of ways. There are pupil councils, facilitated by a teacher, but pupil led. These are the Eco Council, the Rights Respecting group, the Grounds and Outdoor Learning Council. These give pupils opportunities to lead and make decisions.
- Pupils facilitate a range of groups, such as Digital Learning, Fun Learning, Pupil Choir and Ukulele and Guitar Club. In addition, the pupils take control of the weekly school assembly, organising the agenda and ensuring that it runs smoothly, taking into account the needs of pupils and staff.
- Fossoway has an active Parent Council, which support the school in its work with parents and encourages links between school, parents, pupils and the community. Parental support enables the school to gain experiences out with the local community, and trips. Family learning programmes have been developed to further enhance parental involvement in children's learning.

Summary of Educational Benefits

- Fossoway Primary is a bright, modern school, with mixed sex classes at all stages in the school, including nursery.

- The school roll allows all children to participate in peer support, classroom learning, and learning groups across stages and between classes, with the benefit of allowing children to have a wide and varied range of learning experiences.
- Learning and teaching at Fossoway starts with the early years provision, supporting a seamless transition to Primary One.
- The building lends itself to modern teaching methods, with good use of break out space, accessible and flexible teaching and outdoor areas and good facilities for sport and leisure.

6.4 Financial Impact

The financial savings generated from closing Blairingone Primary School amount to £85,626 including mothball costs annually (refer to Appendix 4).

These financial savings support the delivery of education across the whole of Perth and Kinross.

A capital receipt would be forthcoming if the building was to be sold or income could be generated through a lease.

Combining pupils from both catchment areas into one school maximises use of the school estate and represents good asset management, while also enabling the children to continue to attend a rural school. Additionally, the increased roll at Fossoway Primary School contributes towards ensuring a sustainable roll there.

6.5 Environmental Impact

There will be environmental benefits from energy consumption reducing if the school is to be closed.

There is little impact on travel due to the small numbers of pupils to be transported.

6.6 Pupil Projections

This would lead to the pupil roll being a maximum of 5 in the next 4 years. This is insufficient to create a sustainable roll. It is likely, given past patterns, that parents of new P1s would continue to choose to send their child to other nearby primary schools.

It is likely that house building in the Blairingone Primary School catchment area over the next 4 years will continue to be limited with few if any additional pupils for the school as a result.

7. Conclusions

In November 2016, it was agreed as part of the School Estate Transformation project that an options appraisal should be carried out on Blairingone Primary School due to under-occupancy.

At that time, the school had a pupil roll of 7 (Census 2015) and an approved capacity of 25 giving an occupancy level of 28%. The roll had fallen due to more pupils

choosing to attend other primary schools in the area, particularly Fossoway Primary School.

Information was collated on pupil numbers, housebuilding, finances, the school, the local area and community, travel arrangements and environmental impact to inform the options.

As part of the review, a pre-consultation exercise was carried out with the local community. This included a survey to gauge support for a catchment review.

Each of the options was then considered and the outcome determined as follows:

	Option Description	Outcome
Option 1	School remains open	Rejected. Not a reasonable option due to not being able to maintain a sustainable school roll.
Option 2	Consider mothballing the school – move pupils to Fossoway Primary School	Rejected. Not a reasonable option due to not being able to develop a sustainable school roll in the next 2-3 years.
Option 3	Consider closing school – move pupils to Fossoway Primary School	Accepted as a reasonable option for the following reasons; <ul style="list-style-type: none"> • Educational benefits to Blairingone Primary School pupils moving to Fossoway Primary School include peer support and learning groups across stages and between classes and early years provision with seamless transition to Primary 1. • Unsustainable school roll at Blairingone Primary School but promotes the sustainability of Fossoway Primary School.
Option 4	Catchment area is reviewed to determine whether this would increase the school roll sufficiently to ensure the future sustainability of the school	Rejected. Further consultation and assessment in relation to a possible extension to the catchment area to include Powmill was undertaken but it would not be possible to create a catchment which would develop a sustainable roll. Not a reasonable option

The only option which is considered to be reasonable is to consider closing Blairingone Primary School, with the pupils transferring to Fossoway Primary School.

Special regard has been given to the rural school factors and the assessment of these is set out in the Options Appraisal. The anticipated educational benefits which are likely to occur should that option be progressed and implemented are also considered.

It is therefore recommended that the most appropriate response to the issues identified in relation to the roll at Blairingone Primary School is that a statutory consultation exercise takes place on a proposal to close the school. As a result, pupils would be transferred to Fossoway Primary School. The delineated area of Fossoway Primary School would be extended to subsume the whole catchment of Blairingone Primary School.

Community Engagement

Website and On-line Questionnaires

A 'School Estate Transformation' page was set up on the Perth and Kinross Council website which provided the wider community with an overview of information that the Council would be using in the options appraisal, including pupil projections and building information.

A questionnaire was also available for completion, for those people that could not attend the community engagement events. The questionnaire asked people to respond to a series of options and questions related to the options appraisal.

The questionnaire was available on the Council website from 12 September 2017 to 6 October 2017. Fifty one questionnaires were submitted with 36 detailing a preferred option.

Drop-In Session

A community drop-in session was held at Blairingone Primary School on Thursday 21 September 2017 from 3pm to 7pm to seek feedback from the community on the future of Blairingone Primary School. Thirty two people attended the session. 57% of the attendees identified themselves as members of the community, 28% as parents 6% as family members and 9% as Local Members.

The Council is grateful to Blairingone Parent Council and Fossoway Community Council for their assistance in the planning and publicity for the drop-in session.

Content of Sessions

Visitors to the events were given an overview of information that the Council would be using in this options appraisal, including pupil projections and building information. They were asked to:

- give feedback on each of the options being considered in the options appraisal either through using post-it notes or through filling in a questionnaire.
- respond to a couple of additional questions related to the reducing roll of the school and the reasons for choosing the school.

Blairingone Primary School

Community Drop-In Session

21 September 2017

**Overview of comments received at Community
drop-in session and Online Questionnaire**

Online Questionnaire Feedback

- Fifty one questionnaires submitted online – 39 completed, 12 partially completed
- 7% (3) of responses from parents, 23% (10) were from the other family members, 9% (4) of responses were from 'other', 23% (10) were from the wider community and 39% (17) responses from neighbours.
- Seven people gave no indication of their relationship to the school
- Eighteen questionnaires were submitted without any comments
- 14% (5) of responses preferred option 1, 8% (3) of responses preferred option 2, 6% (2) of responses preferred option 3 and 72% (26) preferred option 4
- Fifteen questionnaires submitted gave no indication to their preferred option
- Questionnaire closed on 6 October 2017

Online Questionnaire Feedback

Option 1 - Do nothing

Comments

- Doing nothing is an option to edit and see the future development in the area. I'm not familiar enough with Fossoway Primary to comment on its capacity to absorb Blairingone Primary.
- I know a pupil at the school and I know the parents are happy with their children's educational attainments. The pupil enjoys that the school is small and has a supportive nurturing atmosphere. There is a proposed new housing development within a site at Blairingone which would support the school.
- The children who are there thrive in the school and would suffer having to travel further to school, especially the younger ones.
- Keep the school open.
- To lose the school would be heart-breaking, my daughter would be devastated and she struggles as she has asd. This would really affect her welfare.
- I am a resident within Blairingone; I am a foster carer and can have up to three children at one time. The school and its reputation is exactly what foster kids need to settle in.
- The status quo is not acceptable because such low numbers do not provide the necessary educational and social interaction in peer groups which are crucial for the successful development of the child.
- I feel that the school remaining open would not be an issue to me but I do feel penalised by wanting a full education for our children but having no access to transport to and from the nearest primary school that can provide that, if the school was closed or mothballed we would have access to a school bus.
- Option 1 - will increase the possibility of closure - not acceptable.

Online Questionnaire Feedback

Option 2 - Consider mothballing the school – move pupils to Fossoway Primary School

Comments

- Blairingone is our catchment school; our children are and we live very close to the school. I have enrolled our year old in P.... at Fossoway primary and will request the same for his sibling; I couldn't consider a school with such low numbers. I fully believe the educational experience requires peer learning as well as teacher student learning to be a positive and successful process. Attending a school with little or no children of the same age will not help develop vital social skills and I fear the transition to high school would be made much more difficult without these skills. As a parent, I also worry greatly about the A977 and volume of HGVs that travel past the gates of the school at high speed with little regard and very little traffic calming measures in place.
- The closure of the school seems inevitable, there are only four pupils this year and I suspect that the standards at Fossoway will naturally have to be higher because of the needs of the larger community.
- At the moment with only 4pupils. I feel children need to be in larger classes with children of their own age. It is important they make friends which will carry on to Secondary School.
- Closing/mothballing the school would be bad for the overall area, but doing nothing will not address the problem as the overall population of the area is aging.
- Mothballing the school would result in a deterioration of the building with little prospect of it being re-opened.
- Mothballing implies a possible influx of primary age children in the future which is an unlikely eventuality.

Online Questionnaire Feedback

Option 3 - Consider closing the school – move pupils to Fossoway Primary School

Comments

- The current situation is detrimental to both the educational and social development of the children involved.
- Although Blairingone provides a very nurturing and happy environment for the children, because of its size, there are many opportunities for interaction and learning that aren't available. My main reasons for closure are to allow the children:

- To have contact and interaction with other children of their own age
- To better develop social skills essential for future happiness and success at school
- To get exposure to different teaching styles
- To receive more teaching time
- To access better resources
- To make more friends
- Closure of Blairingone is a very short sighted plan. Costs of transporting children would be a poor option. These are rural children requiring their own rural school.
- There will surely be a cost to the Council if they have to provide transport to and from schools out with Blairingone for local children and it takes them away from the village community
- Would result in any primary school children within the Blairingone area having to travel over four miles to school. Not a great prospect particularly in inclement weather.
- Closing the school I believe is the worst option, the local community has already lost local shops, post office, police stations and I believe this will impact greatly on the local wellbeing as yet another amenity disappears
- Very short sighted to close school when so much potential is offered. With the Development of village, where would children get schooled?
- I believe it would be detrimental to life in the village if the school was closed and thus I do not consider the other options to be justifiable.
- The other options are to close the school it's a very good school why should it close the education of the children should be more important than the closure of the school
- Should not be considered at all
- It would be a real shame to see the school go; this brings a sense of community to the area. Seeing the children go off in the morning and come home at night. The school is required for the redevelopment of Blairingone as this will be a major attraction to the area for families.

Online Questionnaire Feedback

Option 4 - Catchment area is reviewed to determine whether this would increase the school roll sufficiently to ensure the future sustainability of the school.

Comments

- There are currently plans for housing development around Blairingone which if approved could increase the roll considerably. In addition, there are a number of houses in the area for rent or sale which are family sized properties. The new owners or tenants could have Primary school aged

children that could attend Blairingone Primary. Although not a parent, I live in the area and every child I know who has attended the school is articulate, well-mannered and a well-rounded individual. Closing the school without due regard to the potential increase in the roll would be a mistake. Schools once closed do not often reopen.

- There have been plans to build more houses in Blairingone and it would be a shame to close the school. A very short sighted plan. Also, the children we have met in the area have loved the school, thrived there and reached excellent academic standards. All have gone on to secondary school as confident, rounded pupils. To close the school would be very detrimental to Blairingone as a village.
- My sister is happy with her daughter's educational attainments' and although small it has a supportive nurturing atmosphere. There is currently a proposed new housing development within a site at Blairingone which would support local services most notably Blairingone PS and would bring other much needed amenities to a struggling community. Another option would be to increase the catchment area for the primary to Powmill which would potentially also increase the school roll sufficiently.
- There are already plans for housing expansion in Blairingone and this should be expedited.
- Blairingone School has served the community well for many years. It would be a great shame if it were to close now and would certainly have a detrimental effect on anyone considering buying a home in the village, particularly in the light of the proposed development plans for housing.
- Small schools are the heart of rural communities and the children generally do well in a smaller, nurtured class than when they are placed in large groups where any special needs are not picked up.
- Parents/locals enjoy that the school is small and has a supportive nurturing atmosphere support local services most notably Blairingone PS and would bring other much needed amenities to a struggling community.
- To ensure the future of Blairingone community as the school is the only amenity that remains.
- The benefit of the village and the children that attend the school.
- For the benignity of the village and the children that attend the school.
- Good school to stay open and Fossoway is bursting at the seams with pupils.
- A school located in the village was one of the reasons my partner and I bought a house in the village and as the only community amenity left I believe it should be protected.
- The school needs to be kept open for the future of the education for the children.
- The school is the hub of the community. If the new houses are being considered this school is needed.
- The community need to keep local amenities for local kids.

- This is the only local amenity the village has left, we need to keep it for the community.
- Without a school the village will virtually die as it will be of no interest to potential new village residents. We need more amenities not less!
- The school is important part of the local community. I sent my own children to Blairingone School; they had a great education, small classes, were able to come home for lunch and could walk to and from school. The school is an extension of the small community we live in and has also been an important part of the village.
- Country schools are a fantastic resource and do a wonderful community job. It is already there so use it! Give local education a chance.
- Redevelopment is in the pipeline for Blairingone, this school would serve the increase in numbers. This is the only local amenity left in the community.
- Members of my family benefited greatly from small local primary schools.
- Increasing the catchment area for the primary to Powmill which would potentially also increase the school roll sufficiently.
- Widen catchment area so children from Dollar and Powmill have a chance to go to the school and provide a bus/ taxi for the children.
- Catchment needs to be widened.
- If extending the catchment area increased the school intake to a maximum level. Then I see that as a feasible option.
- I am happy with the educational attainment provided by Blairingone Primary School as it provides a very supportive atmosphere for learning. This is particularly important at a time when school classes are generally getting bigger. A catchment area review would potentially increase the school roll to ensure that new building plans should they materialize would secure the future of the school within the community.
- Open up schools valuable education to a wider area. Excellent education at this school.
- We are happy with the children's education and enjoy that the school is small and has a nurturing atmosphere.
- Makes school potentially viable.
- Expanding the catchment area in what is a very rural environment is unlikely to change the situation.

Online Questionnaire Feedback

Are there any other options/proposals that have not been considered?

Comments

- Make school more community based and perhaps make it like a community centre as well as a school.

- There was options put forward a few years ago none of which were taken any further, are we wasting our time.
- Could children from Powmill (which doesn't have a Primary School) be brought to Blairingone instead of attending Fossoway School?
- Make it more of a community hub, like the secondary school in Kinross. Local library/drop in centre/information point/office services/local meeting point/car park/cafe.
- At present children in Blairingone have an option for which primary school they can attend. Maybe review whether this option is necessary? Blairingone primary clearly has benefits due to the smaller numbers it can cater which surely adds value to a child's education.
- I feel that all of the other options just postpone the inevitable decision to close. The sooner a resolution is reached, the quicker the children can adapt to their new surroundings and benefit from a more normal learning environment, which will give them the best preparation for secondary school.
- I'm surprised at the executorial approach to the problem. Closing a school is simply symptomatic of wider problems in the way the country is run. A more strategic approach might be to look at what communities need to thrive - post offices, schools, local shops, pubs, playparks etc and consider how they can be funded. Closing small public amenities kills off communities and forces people to move to more populous areas, in turn putting unnecessary strain on them.
- Revitalise small villages with amenities.

Questionnaires were provided at the drop-in session, the feedback is as follows:

Option 1 - Do nothing

Comments

- Numbers have gone up and down over the year. With the projected/proposed developments we should have the need for all places available in Blairingone. Children need to be educated within their own community.
- No decision on the school's future should be made until outcome of LDP2 consultation is known.

Questionnaires were provided at the drop-in session, the feedback is as follows:

Option 2 - Consider mothballing the school – move pupils to Fossoway Primary School

Comments

- Busing children is not a good option. Traffic, weather will effect arrival at school as well as potentially put children at risk. If a child is taken ill and parents have no transport what will happen?
- The school numbers have fluctuated in the past and the numbers projected for the future look better so it would seem to be the wrong time given our possible expansion of housing in the area.
- The other options mean major change for my son and children like him with additional needs, who have not thrived in larger schools and who struggle with change. This would lead to increased anxiety and a possible drop in development.
- If school was mothballed, if school were to reopen it would mean moving children back after setting then in another school.

Questionnaires were provided at the drop-in session, the feedback is as follows:

Option 3 - Consider closing the school – move pupils to Fossoway Primary School

Comments

No comments were noted for this option on the questionnaires completed at the drop-in session.

Questionnaires were provided at the drop-in session, the feedback is as follows:

Option 4 - Catchment area is reviewed to determine whether this would increase the school roll sufficiently to ensure the future sustainability of the school.

Comments

- Option 4 should have been explored before and will enhance the consideration of option 1.

- Catchment area should be both Fossoway and Cleish – if school can be expanded through option 4, improved transport will be needed. More integration with neighbouring PKC schools.
- The school is not just our children's school; it is the heart of our community, the only part of Blairingone that provides a sense of community.
- If more children were at school it would not be in danger of closing.

Questionnaires were provided at the drop-in session, the feedback is as follows:

Are there any other options/proposals that have not been considered?

Comments

- To also add/build through to school house add an after school club that would attract parents who worked to send their children here. I believe this would attract higher numbers to the school.

Community Drop-In Session

Drop-in session ran from 3pm – 7pm on 21 September 2017

- Thirty two attendees at the session
- 19% (6) of attendees were neighbours
- 28% (9) of attendees were parents
- 6% (2) of attendees were other family members
- 38% (12) of attendees were part of the community
- 9% (3) attendees were Councillors

Comments received at the drop-in session

Option 1 - Do nothing

Comments

- We need to do something to ensure a sustainable future for all here just now and in the future – increase catchment and make it appealing to working parents.
- The village needs a school if it's to survive as a village and encourage house building and families to move to the area.
- What is a community when does it become one and when does it not become one? Community is people – schools – post office – village hall – shop – when they are gone what is left for a community of people.
- Children are very happy here at the school. Doing nothing would keep school in danger of closing and children won't be happy about moving.
- I would support this option at the moment because the LDP2 consultation on further growth for the village should be concluded before final decisions are made.

Comments received at the drop-in session

Option 2 - Consider mothballing the school – move pupils to Fossoway Primary School

Comments

- Mothballing best option – to wait until houses are ready. Won't happen in next 3 years.
- This would mean there would be no community at Blairingone and surrounding areas.
- The community would disappear overnight – saying the school would possibly re-open if needed is not viable. People would leave the area and homes would appeal.

- Most of the kids who go to school live in the village and this is a way better school than Fossoway.
- 7 houses getting built at Pitfield at moment.
- I am opposed to this; the school should remain open at present until we know the outcome of the LDP2 consultation.
- Mothballing the school would not be a good option as it would be the first step to a complete closure.
- Moving children would be detrimental to their education, children need routine.
- Mothballing the school is the end of the school as it will never re-open as the building would deteriorate.

Comments received at the drop-in session

Option 3 - Consider closing the school – move pupils to Fossoway Primary School

Comments

- Tragic but logical that it has to close unless there is house building.
- The potential for new housing in the area and Fossoway Primary is some distance away for children who don't live in Blairingone but live in the catchment area. Surely this would mean larger class numbers.
- Moving the children to Fossoway would mean extra travel on the roads.
- Very sad to see school closure. It's often huge potential for practical learning in an exceptional location. Traffic is a real concern.
- I am opposed to closing the school and have been throughout my council terms (now on fifth since 1999). There should be more interaction between the other rural primary schools in the area, offering mutual support.
- Community gone! Blairingone would become a place/road with houses and nothing else!
- Closing the school and moving pupils, does not put the child's welfare at the centre. If not felt appropriate to move children if boundaries moved why is it ok to move because LA decide financial cuts means school closes. GIRFEC indicators apply in both cases equally and should not be manipulated for financial reasons.
- Blairingone has already lost pub, shop, bus service. Hard to encourage new families into village. If school were to close the last community hub would be gone.
- Again taking away the school would leave Blairingone with no community. Fossoway Primary is running at full capacity. Cleish is also under review in phase 2.

Comments received at the drop-in session

Option 4 - Catchment area is reviewed to determine whether this would increase the school roll sufficiently to ensure the future sustainability of the school.

Comments

- Increase the catchment to Powmill would increase the school roll, along with the potential of a new housing development, would increase the roll.
- I strongly agree that the catchment area should be reviewed in order that more children from Fossoway and/or Cleish areas could consider this school.
- I am opting for option 4 to keep Blairingone on the map – Powmill pupils could come to Blairingone.
- If catchment area expanded, more children in school to keep it open. Powmill doesn't have a primary school. Children moving to Blairingone School would benefit from wonderful education.
- Great idea! Encourage more families into Blairingone Primary School. Speaking to other mothers they would have their child at Blairingone if they were in catchment (Powmill).
- Option 4, move catchment to Gartwinzan to get more kids into the school.
- Move the boundary to add more pupils. An excellent school spoiled with no expansion to the village.
- Move boundary to include Gartwinzan and/or Powmill.
- Increase the catchment area to increase the feasibility of the school and give time for the possible developments proposed for the village.
- This could be a good option as it would increase the roll and make the school better.
- Wider catchment areas would increase opportunity to higher pupil numbers. Also increase opportunity for greater community involvement. Whilst appreciate difference would not be seen quickly due to not moving children's school it would widen catchment for younger children.
- Make sense! Attract larger numbers! Create an even bigger and stronger community.
- Assuming the school is viable to accommodate 25 pupils – this would be a positive move to enhance the community and develop the village potential. Care would be needed to manage the road traffic locally.
- The sustainability of the school is down to money. An increase in numbers would identify the good quality of teaching within this school and the importance of the school to the village and surrounding area.
- It would be sad to see the school close as it is the only active life in the village. I would suggest the school needs some good PR to get more pupils – maybe move the boundaries.

Comments received at the drop-in session

Are there any other options/proposals that have not been considered?

Comments

- If the school cannot survive as it is I would add a breakfast and after school club. Also a possible kindergarten – something different – an outdoors school – seems very popular. Lots of lovely countryside you need a unique selling point to encourage people to use the school – not the same old thing - build it and they will come.
- Consider inclusion of a nursery provision to the school which would encourage children into the school. If children put to nursery unlikely to be preference of parents to move into primary classes.
- Increase catchment and build through to school house and create after school facility or nursery. Promote school lets; no one knew they could use this facility.
- Make more use of the buildings, nursery is a good idea.
- The few children in the village's parents choose Strathdevon as there is no nursery facilities but bring them back into the catchment for Kinross High School.
- Next door made into a nursery day time, with after school club would encourage parents to use the school, offering more facilities.
- Another option would be to have some kind of after school care for the children to bring in new families to the area at the moment families have to take their kids to Strathdevon (Dollar) for afterschool care.
- More interaction with other primary schools in the area for mutual support. Review transport links.
- Increase catchment area.
- A village hall would be a good thing this however was turned down a couple of years ago.
- Making it easier for the community to use the school after hours – school lets.

Comments received at the drop-in session

Why do you think are the reasons the school roll is low?

Comments

- Lack of amenities in the village – apart from the school, we have nothing. Some incentive must be offered if we want new families moving to the village.
- Small village with static population.

- In my opinion the reason for lack of new families in the village is that we have very little to offer new residents. We need more amenities if we are to grow as a village.
- School roll is low; possibly due to the fact Blairingone has no other amenities. No bus service, no pub, no church.
- No services – no pub, no shop, no public transport.
- School roll is low, poor transport links, poor amenities. If closed then to me it's a dying village.
- Lack of public transport in village stops families moving to area.
- School roll is low, poor transport links, poor amenities.
- Fossoway Community Council, object to small communities moving forward.
- It's a wonder people want to live in Blairingone the roads/pavements aren't looked after, the village looks like a tip, the road is like a race track, why would anyone want to bring up children here.
- At one time 2 local estates used to send workers children to Blairingone. These both no longer have workers.
- School numbers have decreased over time. Farm estates being sold off ie. Solgirth, Arndean. Children of farm workers used to come to Blairingone Primary. Parents in the local area perhaps send their children to private school in Dollar.
- No nursery provision, no public transport, other good primary school in the area that offer nursery so kids make friends and parents reluctant to move their children.
- No nursery provision, children form friendships at nursery and continue to primary school.
- A single teacher school concerns some parents, ways should be found to combat this reason.
- No social interaction for children so parents send children to other schools.
- No one knows about the school! The catchment is so small. There is no after school so working parents struggle to send their children and work.
- Dollar Academy! The school is so small. Don't offer free transport to Powmill children.

Comments received at the drop-in session

How would you describe the community within Blairingone and what are your thoughts on Blairingone Primary School as part of the community?

Comments

- The council meeting takes place in Blairingone School and could be further used in the evenings for community use.

- LA strategic plan state each community should have a hall or a school? Blairingone lost its hall with unfulfilled plan for a replacement – that leaves the school – let's use it and expand it!!
- The community with Blairingone is very important. Very close knit community good community environment terrible transport links.
- Blairingone School is the only thing left what makes it a community.
- School provides current focal point in village for events; meetings etc. so it is a valuable resource in the community and this should be retained.
- School gives village identity.
- Blairingone has a great community spirit, when shows are put on by pupils the response is amazing – standing room only. Charity events are held at school eg MacMillan Coffee Morning again huge turnout.
- The school is the heart and soul of our community, they attend events, support fundraising. It is all we have. Without it we would just be houses. The community want to see more families building the community for the future. Our school = our community!
- Very close knit community and the school has always been a large part of this year by year. – We have lost all of our amenities, and this is the last remaining thing left for the community. *it must be saved*.
- Having lived in the village for 5 yrs I feel the school could play a much larger part in the community – only ever been in for council meetings.
- Blairingone Primary host events for the community. They hold their annual Christmas show which locals attend. They had fundraising events including MacMillan coffee mornings. The pupils also litter pick up within the community along with eco work and regular monitoring of travel and traffic around Blairingone.
- The school is the only focus for the community in Blairingone. Without it there is very little opportunity for locals to come together.
- Sadly the school is the last remaining community hub for Blairingone. Blairingone needs community empowerment not for the community to be shut down.
- What will happen to the value of our homes if the last of our amenities go? And also if the new development goes ahead who will buy. NO BUS. NO SCHOOL. NO COMMUNITY.
- I think the school should stay, over the years I have lived here the amenities have dwindled to almost zero if the school closes we will become a hamlet, and I feel there will be no reason to come and live in the village.
- Blairingone is a friendly and active community but the school is the only hub left for the village. Which will become a commuter hamlet with no attractions for people to move here.
- Small community – no facilities except for school. Where else would the F.C.C and other community activities meet? Need a venue. The school is the hub of the village – xmas fayre – MacMillan Coffee Mornings etc.

- The school should not close pending the outcome of LDP2 consultation. There are plans for a housing development on a site near the school and if this went ahead Blairingone would need a school.
- My first school banded me from art next banded from spelling and now perfect.
- Confident pupils in all aspects of life.
- Ask Kinross High pupils from Blairingone are always confident, independent and well rounded.
- Small school allows for in depth curricular activity.

Email Received:

Sirs, We are aware that the future of Blairingone school is shortly being considered. There is a movement underway to invigorate the village through the building of more houses. A local school would of course be an integral part of this and we ask you to spare the school. Although the number of pupils is very low at the moment the level of satisfaction with parents is excellent and academic achievement is high.

Appendix 2

The Scottish Index of Multiple Deprivation (SIMD) identifies small area concentrations of multiple deprivation across all of Scotland in a consistent way. It allows effective targeting of policies and funding where the aim is to wholly or partly tackle or take account of area concentrations of multiple deprivation. SIMD provides information to help improve the understanding about the outcomes and circumstances of people living in the most deprived areas in Scotland.

SIMD ranks to quintiles, deciles and vigintiles. Quintiles split data zones into 5 groups, each containing 20% of data zones. The lower the quintile the more deprived the area.

ACORN is a well-developed segmentation tool which categorises the UK's population into demographic types. Acorn segments households, postcodes and neighbourhoods into 6 categories, 18 groups and 62 types, based on a range of different data collected in many ways.

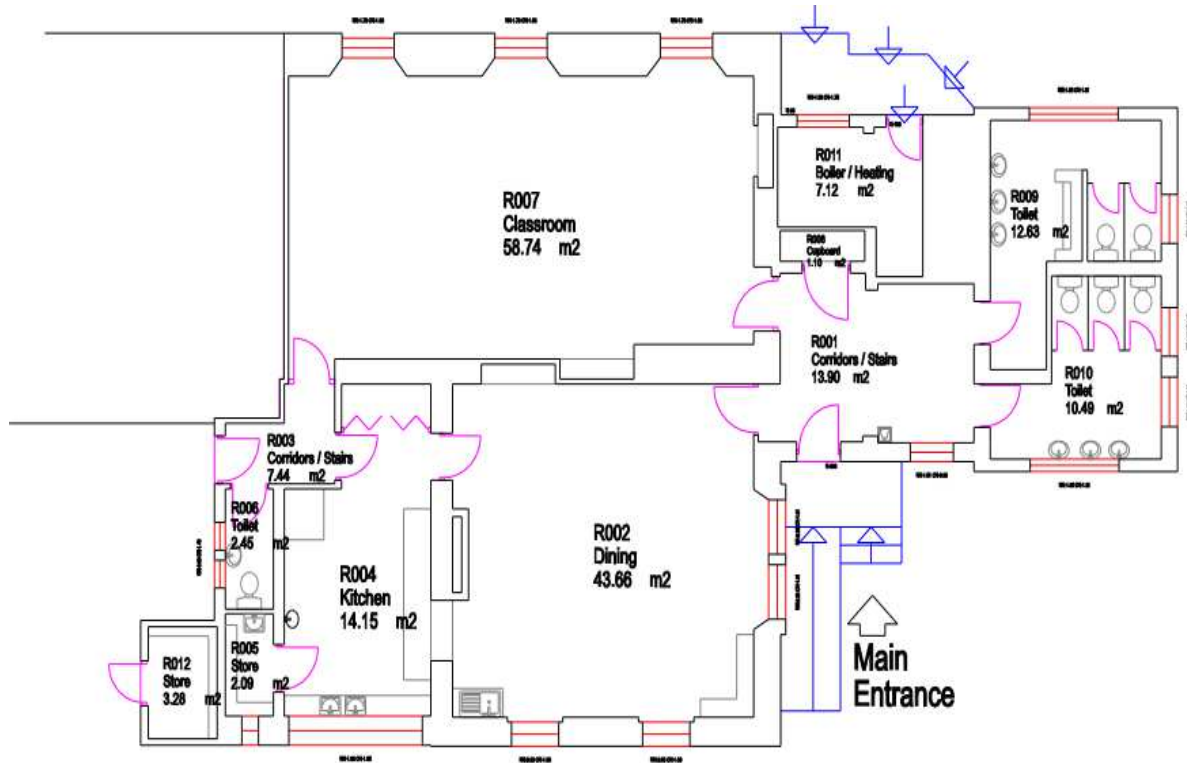
ACORN is used to understand life and living conditions, lifestyles, behaviours and attitudes and can therefore help inform the public service needs of neighbourhoods and households.

There are 5 categories ACORN reports on; Category 1 Affluent Achievers, Category 2 Rising Prosperity, Category 3 Comfortable Communities, Category 4 Financially Stretched and Category 5 Urban Adversity.

Category 5 indicates the level of deprivation within an area.

SIMD and ACORN are based on address.

Appendix 3



Blairingone Primary
Main Building
Ground Floor

Appendix 4

Current revenue costs for school proposed for closure			
Name of School: Blairingone Primary School (Column 1)	Costs for full financial year (2017-18) (Column 2)	Additional financial impact on receiving school [Fossway] (Column 3)	Annual recurring savings (column 2 minus column 3) (Column 4)
School costs			
Employee costs -			
teaching staff	£ 71,247.00	£ -	£ 71,247.00
support staff	£ 19,440.00	£ -	£ 19,440.00
teaching staff training (CPD etc)	£ 475.00	£ -	£ 475.00
support staff training	£ -	£ -	£ -
Supply costs	£ 1,204.00	£ -	£ 1,204.00
Slippage Target	-£ 2,422.00	£ -	-£ 2,422.00
Building costs:			
property insurance	£ -	£ -	£ -
non domestic rates	£ -	£ -	£ -
water & sewerage charges	£ 456.00	£ -	£ 456.00
energy costs	£ 3,926.00	£ -	£ 3,926.00
cleaning (contract or in-house)	£ 3,816.00	£ -	£ 3,816.00
building repair & maintenance	£ 15,237.00	£ -	£ 15,237.00
grounds maintenance	£ 503.00	£ -	£ 503.00
facilities management costs - note 6	£ -	£ -	£ -
revenue costs arising from capital	£ -	£ -	£ -
other	£ 641.00	£ -	£ 641.00

School operational costs:			
learning materials	£ 351.00	£ 248.40	£ 102.60
catering (contract or in-house)	£ -	£ -	£ -
SQA costs	£ -	£ -	£ -
other school operational costs (e.g. licences)	£ -	£ -	£ -
Transport costs: note 3			
home to school	£ -	£ 28,500.00	-£ 28,500.00
other pupil transport costs	£ -	£ -	£ -
staff travel	£ 700.00	£ -	£ 700.00
SCHOOL COSTS SUB-TOTAL	£ 115,574.00	£ 28,748.40	£ 86,825.60
Income:			
Sale of meals	£ -		£ -
Lets	£ -		£ -
External care provider	£ -		£ -
Other	£ -		£ -
SCHOOL INCOME SUB-TOTAL	£ -		£ -
TOTAL COSTS MINUS INCOME FOR SCHOOL	£ 115,574.00	£ 28,748.40	£ 86,825.60
UNIT COST PER PUPIL PER YEAR (5 pupils)	£23,114.80	£5,749.68	£17,365.12

Capital Costs (Column 5)	School proposed for closure (Column 6)
Capital Life Cycle cost	£ -
Third party contributions to capital costs	£ -
Annual Property costs incurred (moth-balling) until disposal	
property insurance	£ -
non domestic rates	£ -
water & sewerage charges	£ 150.00
energy costs	£ 1,050.00
cleaning (contract or in-house)	£ -
security costs	£ -
building repair & maintenance	£ -
grounds maintenance	£ -
facilities management costs	£ -
other	£ -
TOTAL ANNUAL COST UNTIL DISPOSAL	£ 1,200.00
Impact on GAE	
Based on pupils going to Fossoway PS	£ 12,560.00
GAE IMPACT	£ 12,560.00

Notes

1. The total costs incurred for teaching staff (row 5) and support staff (row 6) are required to be included. Column 2 should include the current costs for a full financial year for the school proposed for closure, and column 3 should include the *additional* cost to the receiving school as a result of staff transferring.

For teaching staff, this should include regular teachers, itinerant teachers, learning support teaching staff and special education (ASN) staff. Itinerant teaching staff includes central support services such as English as additional language support, hearing, visually impaired services, educational psychology services.

For support staff, this should include classroom assistants, administration staff and janitorial staff.

For all staff the costs entered should include salary, NI and pension costs.

If the school proposed for closure has less than 3 staff members, then the cumulative staff costs only should be given in row 5 (for both teaching and support staff), so as to avoid possible disclosure of individual salaries.

Training costs should be identified separately in rows 7 and 8.

2. Supply costs to cover teaching and support staff. This may be held in a central budget, be devolved or shared across the budgets.

3. 'Home to school' pupil transport costs should include those school transport costs incurred in accordance with Council policy. 'Other pupil transport costs' will cover costs incurred for the transport of pupils for activities such as swimming etc

4. Row 30 of column 3 should include the additional transport costs related to the increased home to school transport arrangements that are put in place in accordance with Council policy. This figure is therefore likely to be considerably higher than current costs.

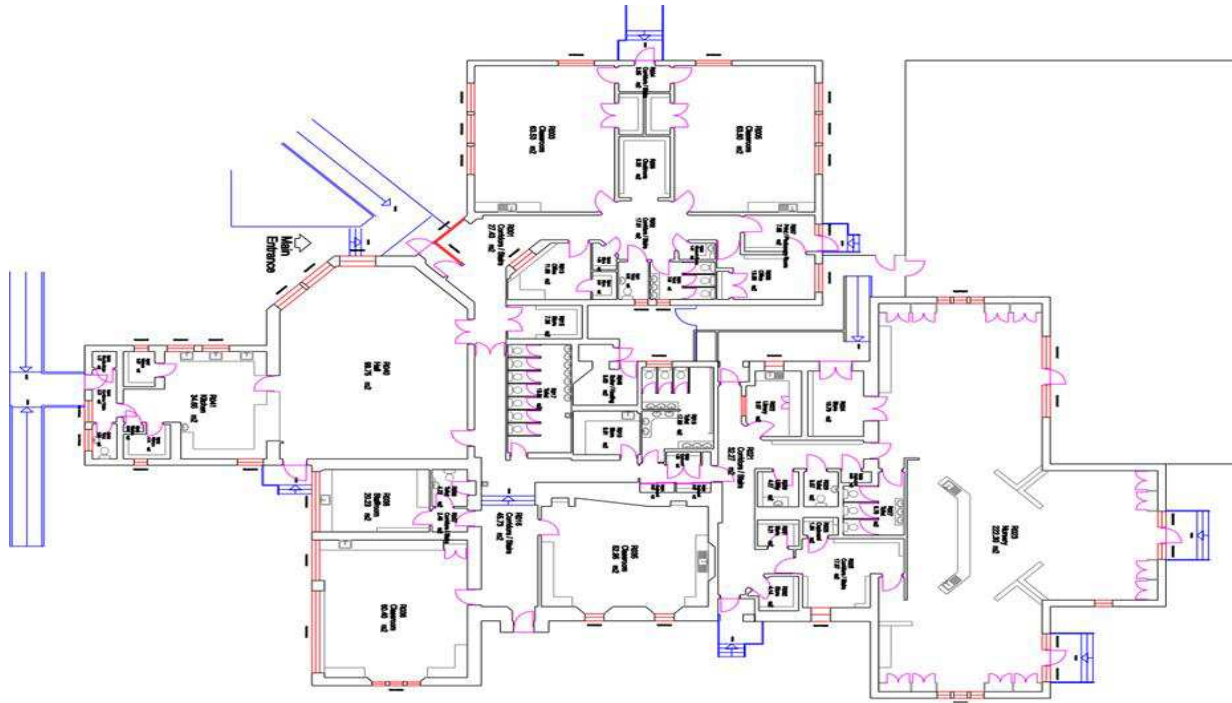
5. This table is to capture the impact on the revenue support grant as a result of changes to GAE

6. Facilities management costs will include costs related to caretaking, janitorial and security.

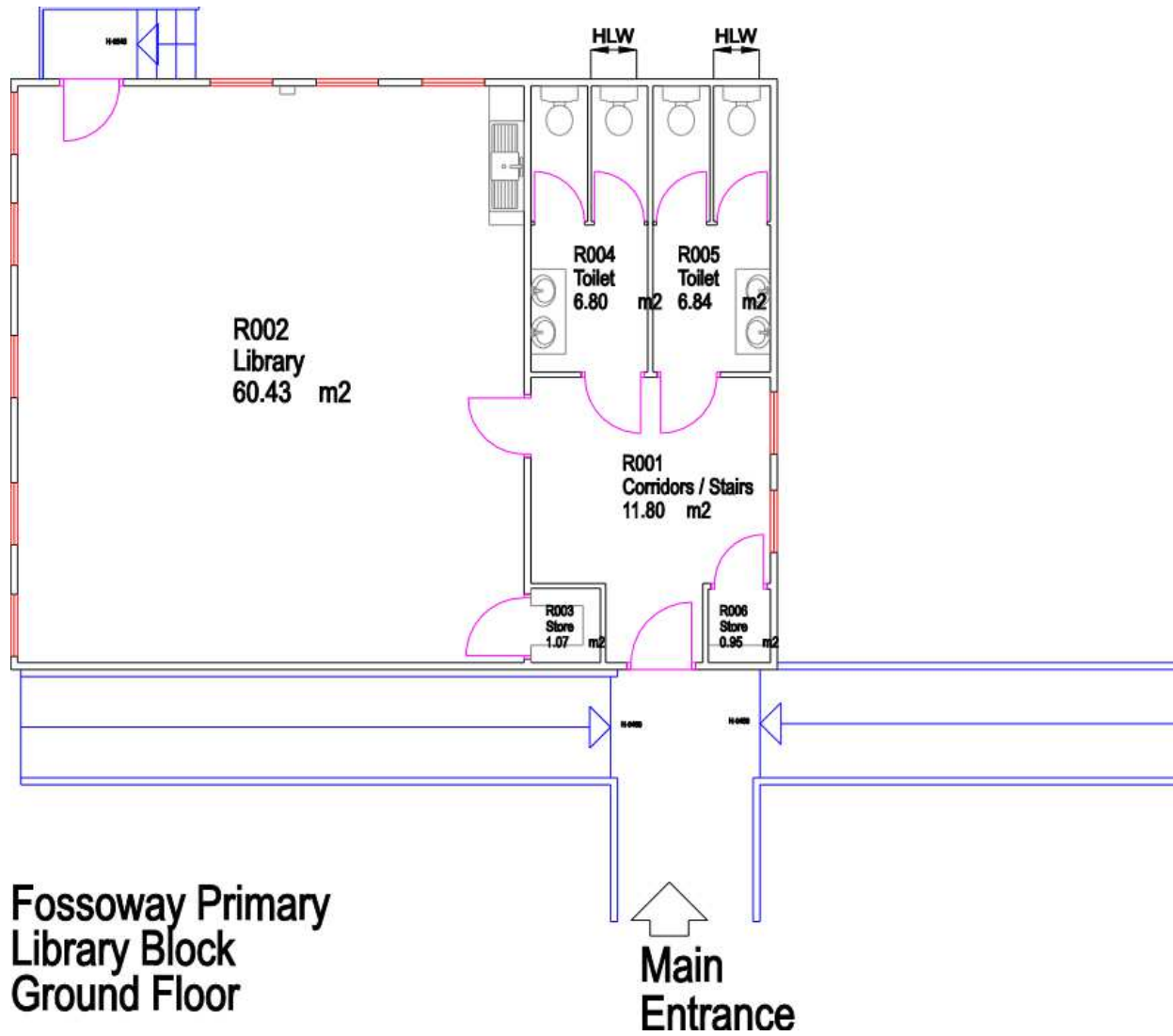
7. The capital costs for the receiving school should be taken across the life cycle of the school in line with the life expectancy of that school.

The capital costs for the school proposed for closure should be taken across the same life cycle period.

Appendix 5



Fossoway Primary School
Ground Block



Site location	Number of houses
Barnhill Farm, Powmill	6
Pitfar, Powmill	7
Newhall Farm, Solsgirth	6
Westmuirhead Farm, Solsgirth	5
Easter Muirhead, Solsgirth	6

Table 9: Planned house building in Blairingone Primary School catchment

After further investigation some of the proposed house building detailed in the HLA has been planned for a number of years without building progressing. The following provides some additional information on the these sites;

Barnhill Farm, Powmill

The planning application was received in 2009. Planning permission was granted in 2015 however there has been no building on the site. Planning consent will expire in March 2018. A planning application was received in 2017 for change of use to commercial/equestrian use on the same site however this was refused.

Pitfar, Powmill

The planning application was originally received in 2007. Some house foundations were built in 2010 making planning approval for 6 units active but there has been no construction since. The planning consent for one further house will expire in February 2018 if building has not commenced. The site is currently overgrown and has been abandoned for some time.

Newhall Farm, Solsgirth

In principle planning consent was given in January 2009. This was extended in April 2012 which expired in April 2015. Full planning consent was given for 1 house in October 2015 which expires in October 2018. The other units do not have full consent and this is required before they can be built.

Westmuirhead Farm, Solsgirth

The site received full planning consent for 3 houses and in principle consent for 2 houses in September 2007. Full consent was provided for the 2 houses in 2011. One house was built in 2011 with no other building since.

Easter Muirhead, Solsgirth

The original planning application was received in 2008 with a decision to approve the application in 2011. The planning application included the formation of an equestrian centre. The 6 residential properties included 4 in a steading group and 2 houses originally tied to the business. It is still possible that the 2 houses tied to the business could be sold on the open market but they are not likely to attract significant market interest due to their proximity to the equestrian centre.