

# THIS IS A CONSULTATIVE DOCUMENT



## PERTH AND KINROSS COUNCIL

### EDUCATION AND CHILDREN'S SERVICES

#### PROPOSAL PAPER

The following schools are affected by this proposal document:

- **Greenloaning Primary School**
- **Braco Primary School**

This document has been issued by Perth and Kinross Council for proposal in terms of The Schools (Consultation) (Scotland) Act 2010.

Any Ordnance Survey map data included within this document is provided by Perth and Kinross Council under licence from Ordnance Survey in order to fulfil its public function in relation to this public proposal. Persons viewing this mapping should contact Ordnance Survey Copyright for advice where they wish to licence Ordnance Survey mapping data for their own use.

## **DISTRIBUTION**

A copy of this document is available on the Perth and Kinross Council website: [www.pkc.gov.uk](http://www.pkc.gov.uk)

A link to an electronic version of this document will be provided by letter to:

- The Parent Council (if any) of the affected schools
- The parents of the pupils and children at the affected schools
- The parents of children expected to attend an affected school within 2 years of the date of publication of this proposal document
- The teaching and ancillary staff at the affected schools
- The trade union representatives of the above staff
- The Community Councils
- Relevant users of the affected schools
- Elected Members of Perth and Kinross Council
- The Constituency MSP and List MSPs covering the Constituency
- The Constituency MP
- The Executive Director, Housing & Environment, Perth and Kinross Council
- Tayside Contracts
- LiveActive Leisure
- Education Scotland

A copy of this document is also available from:

- Education and Children's Services, 2 High Street, Perth, PH1 5PH
- Braco Primary School, Braco, FK15 9QD

This document is available in alternative formats or in translated form for readers whose first language is not English. Please apply to Education and Children's Services, 2 High Street, Perth, PH1 5PH by telephone on 01738 476200; or by e-mail: [ECSGeneralEnquiries@pkc.gov.uk](mailto:ECSGeneralEnquiries@pkc.gov.uk)

## **CONSULTATION WITH CHILDREN AND YOUNG PEOPLE**

Pupils will be consulted about the proposal in school and further information about this will be provided to parents/carers.

## **SUMMARY OF PROCESS FOR THIS PROPOSAL DOCUMENT**

### **1. Consideration by the Lifelong Learning Committee**

This proposal document has been issued as a result of a decision on 21 March 2018 of the Lifelong Learning Committee of Perth and Kinross Council ([Report No 18/87](#) refers). This is to seek views on the proposals in this paper.

### **2. Proposal document issued to consultees and published on Council website**

A link to a copy of this document will be issued free of charge to the consultees listed on the preceding page, and it will also be published on the Council website: [www.pkc.gov.uk](http://www.pkc.gov.uk)

### **3. Publication of advertisement in local newspapers**

An advertisement will be placed in the relevant local newspapers. In addition, there may be announcements related to the Proposal process on the local radio station, Radio Tay.

### **4. Length of consultation period**

An advertisement will be placed in local newspapers on Monday 27 August 2018. The consultation will run from Monday 27 August 2018 until close of business on Friday 5 October 2018, which includes a period of 30 school days.

### **5. Public meeting**

A public meeting will be held, the details of which are given on Page 6 of this document.

### **6. Involvement of Education Scotland**

When the proposal document is published, a copy will also be sent to Education Scotland by the Education Authority. Education Scotland will also receive a copy of any relevant written representations received by the Authority from any person during the consultation period or, if Education Scotland agree, a summary of them. Education Scotland will further receive a summary of any oral representations made to the Authority at the public meeting which will be held and, as available (and so far as otherwise practicable), a copy of any other relevant documentation.

Education Scotland will then prepare a report on the educational aspects of the proposal not later than 3 weeks after the Authority has sent them all representations and documents mentioned above. For the avoidance of doubt, the 3 week period will not start until after the consultation period has ended. In preparing their report, Education Scotland may enter the affected schools and make such reasonable enquiries of such people there as they consider appropriate and may make such reasonable enquiries of such other people as they consider appropriate.

## **7. Preparation of consultation report**

The Education Authority will review the proposal having regard to the Education Scotland Report, written representations that it has received and oral representations made to it by any person at the public meeting. It will then prepare a consultation report. This report will be published in electronic and printed formats and will be published on the Council website. It will be available on the Council website and from Education & Children's Services at 2 High Street, Perth free of charge. Anyone who made written representations to the Authority during the consultation period will also be informed about the report.

The report will include:

- a record of the total number of written representations made to the Authority during the consultation period;
- a summary of the written representations;
- a summary of the oral representations made at the public meeting;
- the Authority's response to the Education Scotland Report as well as any written or oral representations it has received, together with a copy of the Education Scotland Report and any other relevant information, including details of any alleged inaccuracies and how these have been handled; and
- a statement explaining how the Authority complied with the requirement to review the proposal in light of the Education Scotland Report and representations (both written and oral) that it received.

The consultation report will be published and available for further consideration for a period of 3 weeks.

## **8. Decision**

This report, together with any other relevant documentation, will be considered by the Lifelong Learning Committee of Perth and Kinross Council, who will come to a decision about whether to implement the proposal.

## **9. Note on Corrections**

If any inaccuracy or omission is discovered in this proposal document, either by the Council or any person, the Council must investigate and decide what, if any, action is required.

If relevant information has been omitted or there has been an inaccuracy, the Council will then take appropriate action, which may include the issue of a correction notice, the publishing of a corrected Proposal Paper or the revision of the timescale for the consultation period, if appropriate. In that event, relevant consultees and Education Scotland will be advised. The Authority must inform the person who made the allegation and what action it has taken.

## 10. Scottish Ministers Call-in

When the Education Authority has made a final decision whether to implement the proposal, it will require to notify the Scottish Ministers of that decision, and provide them with a copy of the proposal document and consultation report. This must be done within 6 working days of that decision.

The Education Authority must also publish on its website the fact that it has notified Scottish Ministers of its decision and of the period during which consultees have the opportunity to make representations to Ministers. For rural school closures, the Education Authority must also give notice of the reasons why the Council is satisfied that closure is the most appropriate response to the reasons for bringing forward the proposal. The Scottish Ministers have an 8 week period from the date of that final decision to decide if they will call-in the proposal. Within the first 3 weeks of that 8 week period, the Scottish Ministers will take account of any relevant representations made to them by any person. Until the outcome of the 8 week call-in process is known, the Authority cannot proceed to implement the proposal.

If Scottish Ministers decide to call in a closure proposal, they must refer it to the Convener of the School Closure Review Panels for determination by a School Closure Review Panel. The Authority may not implement the proposal (wholly or partly) unless the Panel has granted consent to it (with or without conditions) and either the period for making an appeal to the sheriff has expired or, if an appeal has been made, it has either been abandoned or the sheriff has confirmed the Panel's decision.

The School Closure Review Panel may refuse to consent to the proposal, refuse consent and remit the proposal back to the Authority or grant their consent to the proposal subject to conditions or unconditionally.

- Ministers have a power to call in a closure decision, but only where it appears to Ministers that the Council has failed in a significant regard to comply with the Schools (Consultation) (Scotland) Act's requirements or, in coming to its decision, has failed to take proper account of a material consideration relevant to the proposal. Ministers have up to 8 weeks from the date of the Council's decision to decide whether or not to issue a call-in notice.
- During the first 3 weeks of this period, anyone is able to make representations to Ministers on whether the decision should be called-in.
- During the call-in period, the Council may not proceed further, in whole or part, with the proposed closure. Ministers may come to a decision sooner than 8 weeks (but not before the 3 weeks for representations to be made to them has elapsed).
- The Schools (Consultation) (Scotland) Act, as amended, gives Ministers and School Closure Review Panels the right to call on advice from Education Scotland in relation to a proposal at the call-in or determination stage.

## 11. Note

This consultation is being conducted having regard to the terms of the Schools (Consultation) (Scotland) Act 2010.

## **PUBLIC MEETING**

A public meeting will be held to discuss the proposal. Anyone wishing to attend the public meeting is invited to do so. The meeting, which will be convened by the Education Authority, will be addressed by the Executive Director (Education and Children's Services), or other senior officers of the Council.

The meeting will be an opportunity for interested parties to:

- Hear more about the proposal
- Ask questions about the proposal
- Have their views recorded so that they can be taken into account as part of the consultation process.

The meeting will be held on:

**Date – Tuesday 11 September 2018**

**Time – 7.00 pm**

**Venue – Braco Village Hall, Feddal Road, Braco, FK15 9QD**

A note will be taken at the meeting of questions and views. This note will be published on the Council website, and a printed copy will be made available upon request.

**PERTH AND KINROSS COUNCIL  
EDUCATION AND CHILDREN'S SERVICES**

**THIS IS A PROPOSAL DOCUMENT**

Proposal :

That, subject to the outcome of this proposal:

- Provision of a school at Greenloaning Primary School be permanently discontinued with effect from 28 June 2019, or as soon as possible thereafter;
- That the pupils of Greenloaning Primary School catchment area permanently receive their education at Braco Primary School, from 1 July 2019 or as soon as possible thereafter; and
- That the delineated catchment area of Braco Primary School be permanently extended to subsume the whole delineated catchment area of Greenloaning Primary School from 1 July 2019.

This Proposal Paper should be read in conjunction with the [Options Appraisal](#) as it contains more detail regarding the options considered and rejected along with community feedback received.

## **1. REASONS FOR FORMULATING THE PROPOSAL**

- 1.1 On 24 October 2016, Greenloaning Primary School was officially mothballed with the agreement of the parents of the remaining pupils attending Greenloaning Primary School. This means that provision of a school is suspended with pupils temporarily zoned to another catchment area. Mutually agreed arrangements were made with the parents of the remaining pupils for session 2016/17 and pupils have been temporarily zoned to Braco Primary School since then.
- 1.2 The situation at Greenloaning Primary School had been carefully monitored and kept under review by the Council in terms of pupil numbers, the very small number of pupils in attendance and requests for future pupil enrolments. The pupil roll at Greenloaning Primary School was 7 pupils at September 2016 (14% occupancy), and following a further reduction in the pupil roll to 4 pupils by October 2016, the decision was taken that Greenloaning Primary School would be mothballed from 24 October 2016.
- 1.3 Greenloaning Primary School was a single teacher primary school serving the village of Greenloaning and the surrounding area and is a feeder primary school for Crieff High School.

- 1.4 The capacity of Greenloaning Primary School is 49 pupils. The Greenloaning Primary School roll at Census 2010 was 29 pupils and at Census 2016 was 7 pupils. However, there were 16 pupils in total living within the catchment area for Greenloaning Primary School at Census 2016 but 9 of these pupils attended other schools in Perth and Kinross outwith their catchment area as a result of successful placing requests made by their parents.
- 1.5 At Census 2017, there were 9 primary age pupils living within the Greenloaning Primary School catchment area attending Perth and Kinross schools and there were 15 primary age pupils living within the Greenloaning Primary School catchment area attending schools in the Stirling Council area. Many of the children from Greenloaning Primary School catchment area attend St Mary's Episcopal Primary School in Dunblane.
- 1.6 The data for Greenloaning shows that the number of children eligible to start school over the next 4 years (2018 – 2021) is 8 pupils.
- 1.7 Future pupil projections have been considered using aggregated GP registration data and both Braco Primary School and Greenloaning Primary School pupil numbers are projected to remain static over the next 4 years. There are very low numbers of pre-school children in the Greenloaning catchment area over the next 4 years with no house building planned in the area. Pupil projections in the catchment area do not indicate that the potential pupil numbers will increase in the future and there is no suggestion going forward that this is likely to change.
- 1.8 Greenloaning Primary School and Braco Primary School had a close relationship prior to the mothballing as the result of a shared headship. Whilst a shared headship provided a means of improving cost effectiveness, it did not address the wider population issues within the Greenloaning area.
- 1.9 These circumstances result in a diminished and unsustainable school pupil population for Greenloaning Primary School. There is no foreseeable prospect of an increased, stable pupil population. The provision of primary education within Greenloaning needs to be considered in the context of the needs of the pupils and the local community, both now and in the future.
- 1.10 As part of an [options appraisal](#), information was collated on pupil numbers, housebuilding, finances, the school, travel arrangements, environmental impact and the local area and community to inform the options. A pre-consultation exercise was also carried out with the local community to inform the options appraisal.

## **2. VISION, BACKGROUND AND STATUTORY RESPONSIBILITIES**

- 2.1 Perth and Kinross Council works to enhance quality of life, make best use of public resources and ensure continuously improving services. Perth and Kinross Council's corporate strategy "Securing the Future" aims to ensure that individuals, families and communities experience the best possible outcomes from a range of services.



Perth and Kinross Council has a strong identity and clear priorities which everyone works together to achieve, creating areas which are vibrant and successful; safe, secure, healthy and sustainable environments; educated, responsible and informed citizens; confident and active communities; and places where people are nurtured and supported.

- 2.2 The Council's Transformation Strategy 2015-2020 'Building Ambition' and Organisational Development Framework were approved by Council on 1 July 2015 ([Report No. 15/292 refers](#)). They detail how Perth and Kinross Council will deliver transformation over the next five years. Accompanying the strategy is a programme of major reviews which are considered to be key drivers and enablers of transformation across the organisation.

On 24 August 2016, Lifelong Learning Committee ([Report No. 16/347 refers](#)) approved principles to be used as a basis for the transformation review, 'Securing the Future of the School Estate'.

- 2.3 This approach reflects the Single Outcome Agreement National Outcome 15 that "Our public services are high quality, continually improving, efficient and responsive to local people's needs", and the Local Outcome that "Our services will be responsive, of high quality and continually improving". This report also links with the School Estate Management Plan, Education and Children's Services Policy Framework Maximising Resources and with the Education and Children's Services objective to develop the range and quality learning experiences for all.
- 2.4 On 2 November 2016, the Council approved the report "Securing the Future of the School Estate – Next Steps" ([Report 16/485 refers](#)). This report detailed the outcome of the high level review and proposed to proceed with further work on the schools which did not meet the suitability, condition or occupancy principles. In this report, it approved the development of an options appraisal in relation to the future of Greenloaning Primary School due to under-occupancy.
- 2.5 On 21 March 2018, Lifelong Learning Committee considered the [options appraisal](#) and agreed to commence formal consultation on a proposal to close Greenloaning Primary School ([Report No 18/87 refers](#)) in accordance with the Schools (Consultation) (Scotland) Act 2010.
- 2.6 The 2010 Act's principal purpose is to provide strong, accountable statutory consultation practices and procedures that local authorities must apply to their handling of all proposals for school closures and other major changes to schools. These consultation processes are expected to be robust, open, transparent and fair, and seen to be so. They are also expected to be consistent across Scotland.
- 2.7 The 2010 Act makes special arrangements in relation to rural schools, and establishes a presumption against the closure of rural schools. The result of this is that education authorities must have special regard to a number of factors before formalising a proposal to close a rural school and in consulting on and reaching a decision as to whether to implement a rural school closure proposal.
- 2.8 These duties are outlined in the [Schools \(Consultation\) \(Scotland\) Act 2010 and the accompanying Statutory Guidance](#).

- 2.9 Councils have a statutory duty in terms of the Education (Scotland) Act 1980 to make adequate and efficient provision of school education across their entire area for the current school population and future pattern of demand.

Education and Children's Services Service Asset Management Plan 2016 (incorporating School Estate Management Plan), approved by the Lifelong Learning Committee on 9 March 2016 ([Report No. 16/108](#) refers), provides information on the whole of the school estate and the overall objectives and future priorities within Perth and Kinross Council.

- 2.10 Councils also have a statutory responsibility in terms of the Local Government in Scotland Act 2003 to achieve best value. In doing so, consideration must be given to occupancy as buildings are expensive resources. To achieve best value and optimum efficiency, the minimum number of buildings is required to deliver Council services to a particular locality. The organisation of the school estate is therefore kept under regular review, including the need for school provision and other matters, such as catchment areas and the implementation of shared headships.
- 2.11 The Education (Scotland) Act 2016 amends the Standards in Scotland's Schools Act 2000 by adding in new duties to address inequality of outcome. These duties apply in different ways to both Scottish Ministers and education authorities. Where the education authority is making or implementing strategic decisions about school education, it is required to have due regard to the need to carry out its functions in a way which is designed to reduce inequalities of outcome. This is particularly directed in the Act towards pupils who experience those inequalities through socio-economic disadvantage, but there is also a power to extend the range of pupils who are covered by this duty.

### **3. GREENLOANING AND THE LOCAL AREA**

- 3.1 The village of Greenloaning is less than two miles from Braco and is located adjacent to the A9 trunk road. The school is at the edge of the village, close to the A9 which is one of the main arterial routes serving most of the country.
- 3.2 Greenloaning has a population of approximately 330<sup>1</sup> people and is mainly residential. There are no other facilities or services in Greenloaning other than the primary school.
- 3.3 Greenloaning Primary School is approximately 1.7 miles<sup>2</sup> (walking) and approximately 2 miles<sup>3</sup> (driving) from Braco Primary School.
- 3.4 The closest General Practice (GP) to Greenloaning and Braco is Dunblane Health Centre and the nearest dental surgery for both is also in Dunblane. Dunblane is approximately 7 miles from Greenloaning. The nearest Post Office is located in either Dunblane or Muthill.

---

<sup>1</sup> Local Development Plan

<sup>2</sup> Google Maps

<sup>3</sup> Google Maps

- 3.5 Data on pre-school children registered with GP practices living in Greenloaning catchment shows that the number of children eligible to start school over the next 4 years (2018 - 2021) is 8.
- 3.6 The TAYplan sets out a hierarchical approach to directing new development to existing settlements and identifies Perth Core Area as the tier 1 settlement which should take the majority of new development. There is no planned house building for the Greenloaning area contained within the Local Development Plan (LDP) or Housing Land Audit<sup>4</sup> (HLA) 2016.
- 3.7 The Proposed LDP2 was approved for consultation by Council on 22 November 2017 ([Report No. 17/387](#) refers). The aspiration is to have a final LDP to adopt by Spring 2019. In LDP2, the settlement boundary at Greenloaning has been drawn to accommodate limited development, should this come forward, at Rottearns Mill and at land south of Millhill Drive. Neither site is specifically allocated as a housing proposal but planning permission has previously been granted for residential development at both sites. There is however no timescale for any house building at present. Therefore, pupil numbers would not be affected for the foreseeable future by development on this land.

#### **4. GREENLOANING PRIMARY SCHOOL**

- 4.1 Greenloaning Primary School provides non-denominational education to pupils from P1 - P7 from the village of Greenloaning and surrounding area. There is no nursery provision at Greenloaning Primary School. A plan of the school site for Greenloaning Primary School is attached as Appendix 3.
- 4.2 The catchment area for Greenloaning Primary School adjoins the catchment areas for Braco Primary School and Blackford Primary School. The Stirling Council area borders the catchment area to the south. Appendix 1 shows the present school catchment area for Greenloaning Primary School.
- 4.3 The Scottish Government's Rural School List 2017 classifies Greenloaning Primary School as an "accessible rural" school under Section 14 of the Schools (Consultation) (Scotland) Act 2010. The classification is based on two main criteria, settlement size and accessibility based on drive time. For Greenloaning Primary School the classification criteria is "areas with a population of less than 3,000 people and within a 30 minute drive time of a settlement of 10,000 or more" (Source: Scottish Government Rural School List 2017).
- 4.4 Prior to Greenloaning Primary School being mothballed, Braco and Greenloaning Primary Schools operated with a shared Headteacher. The school structure had one composite class across stages Primary 1 – 7.

---

<sup>4</sup> The Housing Land Audit is compiled by PKC Planning on an annual basis, it estimates build out rates for sites over 5 houses across Perth and Kinross

- 4.5 Historical and projected pupil roll data for Greenloaning Primary School is attached as Appendix 5. This data shows that the roll of Greenloaning Primary School has been falling over the last 5 years, with pupil numbers unlikely to increase above their present level.
- 4.6 The majority of children in the catchment area attended other primary schools rather than Greenloaning Primary by way of placing requests.
- 4.7 If the school had re-opened in August 2018, the maximum pupil numbers from the catchment would be 2. It is highly unlikely that any of the pupils from the Greenloaning Primary School catchment area would return to the school were it to re-open, based on feedback from the pre-consultation sessions. This would leave the school roll at between 3 and 6 pupils for the period 2018 - 2022, assuming all future P1 pupils living in Greenloaning catchment area attended Greenloaning Primary School if it re-opens.
- 4.8 Throughout Scotland, core facts are gathered and published on school buildings. The definition and assessment categorisations are set by the Scottish Government as follows:

Condition <sup>(1)</sup> -is an assessment of the physical condition of the school and its grounds. Categorisation is as follows:

- A: Good – Performing well and operating efficiently
- B: Satisfactory – Performing adequately but showing minor deterioration
- C: Poor – Showing major defect and/or not operating adequately
- D: Bad – Life expired and/or serious risk of imminent failure

Suitability <sup>(2)</sup> -is an assessment of the school as a whole, its buildings and its grounds and of the impact these have on learning and teaching, leisure and social activities and the health and well-being of all users. Categorisation is as follows:

- A: Good – Performing well and operating efficiently
- B: Satisfactory – Performing well but with minor problems
- C: Poor – Showing major problems and/or not operating optimally
- D: Bad – Does not support the delivery of services to children and communities

Sufficiency <sup>(1)</sup> -states the occupancy – pupil roll divided by capacity expressed as a percentage.

Source: (1) *Core Facts Building Our Future: Scotland's School Estate 2003*  
(2) *The Suitability Core Fact: Scotland's School Estate 2008*

- 4.9 A condition survey was carried out on the building and the overall site is rated as condition 'B' (Satisfactory – performing adequately but showing minor deterioration). Condition is an assessment of the physical condition of the school and its grounds.
- 4.10 The overall suitability of Greenloaning Primary School building prior to mothballing was categorised as 'B' (Satisfactory - performing well but with minor problems).

Suitability is an assessment of the school as a whole, its buildings and its grounds and the impact these have on learning and teaching, leisure and social activities and the health and wellbeing of all users.

- 4.11 Planned and unplanned maintenance on the school building in the last 3 financial years cost £21,259.

The approximate cost to bring the property into an acceptable condition for re-opening is £319,987 for building fabric, mechanical and electrical works. These works are not required immediately but in the medium term which is 2-5 years.

- 4.12 The school site and the school building are owned by Perth and Kinross Council.
- 4.13 Prior to mothballing, there were no community lets held within Greenloaning Primary School. The majority of community events are held in Braco Village Hall.

## **5. OPTIONS FOR CONSIDERATION**

- 5.1 In arriving at the proposal set out within this Proposal Paper, the Council has considered a number of alternative options for the future of Greenloaning Primary School as part of the options appraisal:

- Option 1 - Continue with mothballing of Greenloaning Primary School – all pupils remain at Braco Primary School and suitability rating of Braco Primary School is improved.
- Option 2 - Consider closing Greenloaning Primary School – pupils remain at Braco Primary School and suitability rating of Braco Primary School is improved.
- Option 3 - Re-open Greenloaning Primary School and suitability rating at Braco Primary School is improved.
- Option 4 - Re-open Greenloaning Primary School and split the stages of education between both schools. Suitability rating improved at Braco Primary School improved.
- Option 5 - Catchment areas of the schools are reviewed to determine whether this would increase the school roll at Greenloaning Primary School and ensure the future sustainability of both schools.
- Option 6 - Consider closing Braco Primary School and pupils moved to an extended Greenloaning Primary School.

- 5.2 Immediate re-opening of the school was not considered to be a reasonable option, given the very small number of children resident in the catchment area who attended the school prior to mothballing. If the school had re-opened in August 2018, the maximum pupil numbers from the catchment would be 2.

It is highly unlikely that any of the pupils from the Greenloaning Primary School catchment area would return to the school were it to re-open, based on feedback from the pre-consultation sessions.

Even assuming all future P1 pupils living in Greenloaning catchment area were to attend Greenloaning Primary School if it were to re-open, the school roll would only reach between 3 and 6 pupils for the period 2018 - 2022. This was, therefore, not included as an option for consideration.

## **6. ASSESSMENT OF OPTIONS**

The detail of the assessment of each option is included within the Options Appraisal.

### **6.1 Continue with mothballing of Greenloaning Primary School – all pupils remain at Braco Primary School and suitability rating improved**

- 6.1.1 The school has been mothballed since October 2016. Leaving the school open but with continued mothballing of the school is only a reasonable option if there are likely to be changes within the catchment area in the next 2-3 years which would result in an increase in the pupil roll.
- 6.1.2 Pupil numbers are not projected to increase in the next 4 years. There has been a downward trend in the number of people under 16 living in the catchment area in recent years. Pupil numbers had reduced relatively rapidly from 29 to 7 over the previous 6 years. Prior to mothballing, a large number of pupils from Greenloaning Primary School catchment attended schools in the Stirling Council area or Braco Primary School as a result of parental choice.
- 6.1.3 The number of children of pre-school age living in the catchment area is very small, and in recent years there have been occasions where there have been no P1 age children choosing to attend Greenloaning Primary School. There are no housing or other developments which are likely to impact positively on the size of the pupil population in the next 2-3 years.
- 6.1.4 If the school remains mothballed, the building would remain out of use awaiting a potential reopening or final closure. While the school is mothballed, there is a possibility of it reopening, which could be viewed as a positive. However, continued mothballing creates continued uncertainty for parents and the community. In addition, there are no opportunities to progress alternative uses for the building, which may include community asset transfer, lease or sale of the building, all of which may benefit the wider community. Therefore, on balance, it is considered that continued mothballing is more likely to be a negative than a positive, in terms of community impact.
- 6.1.5 If Greenloaning Primary School was left mothballed on an indefinite basis, Perth and Kinross Council would incur annual costs to maintain the building. Unoccupied buildings can deteriorate more rapidly than operational premises and can become a focus for opportunistic crimes and/or targets for vandalism whether the premises are located in urban or rural areas.
- 6.1.6 In summary, on the basis that there is no indication that pupil numbers will increase in the next 2-3 years, mothballing is not considered a good use of resources and would prevent the building being used to benefit the community. Therefore, continued mothballing is not viewed as a reasonable alternative.

## **6.2 Consider closing Greenloaning Primary School – pupils remain at Braco Primary School and suitability rating improved**

- 6.2.1 This option would see the suitability rating for Braco Primary School improved. Facilities within the Braco Village Hall would also be improved for the benefit of both Braco and Greenloaning communities
- 6.2.2 Braco Primary School currently accommodates a number of pupils from Greenloaning Primary as a result of the mothballing. Pupil numbers at Braco are projected to remain static for the next 4 years. Braco Primary has capacity to continue to accommodate the projected pupil numbers should Greenloaning Primary School be closed. This option is considered to be reasonable and further detail is provided in relation to educational benefits, travel, environmental impact, community impact and financial impact in Sections 10 -15.
- 6.2.3 Greenloaning Primary School and Braco Primary School already had links with each other prior to the mothballing, including a shared headship and pupils who moved there in October 2016 following the mothballing are now settled at Braco Primary School.
- 6.2.4 Travel arrangements for pupils and staff have been in place since October 2016 and there are no known issues with that.
- 6.2.5 There are environmental benefits to Greenloaning Primary School pupils being transferred to Braco Primary School in that they would be transported by the Council rather than travelling individually.
- 6.2.6 Pupil numbers at Greenloaning Primary School have been reducing year on year since 2005 when the school had 42 pupils. This is due to the increase in pupil numbers from housebuilding levelling off and fewer primary school age pupils living in the village. P1 intake figures over the next 4 years are also small, with a maximum of 8 pre-school pupils living in the catchment area. Three of the 8 pupils were due to attend Greenloaning Primary School in August 2018 however no pupils with a Greenloaning catchment area address registered to start at Braco Primary School in August 2018.
- 6.2.7 Pupil numbers have also decreased due to parents requesting placements at other local schools.
- 6.2.8 If the school was to close, there would be no significant impact on the community in terms of access to facilities for community events. Braco Village Hall is available for community use and is currently well used by the community. The school was not used for lets latterly.
- 6.2.9 It is not considered that the closure of the school would have a negative impact on the sustainability of the community. Greenloaning is located approximately 2 miles from Braco. The community currently travel to access health, retail and leisure facilities.
- 6.2.10 The Council has received requests from a number of sources for the use of the school should it close. Closure of the school would provide opportunities for the building to be used for the benefit of the community, either for business or residential use, or for community use if a suitable plan was identified.

6.2.11 Pupil numbers at Greenloaning Primary School have been reducing over recent years and the positive impact of Greenloaning pupils on the school roll supports the sustainability of Braco Primary School which is also in a rural location and is a rural school.

6.2.12 Improving the suitability rating of Braco Primary School benefits the pupils from both Braco and Greenloaning by providing a better environment for learning.

6.2.13 It is considered that closure of the school is the most appropriate response to the issue of decreasing numbers of young children living in the catchment area. This, coupled with parents choosing to place their children at other primary schools, has led to the school being mothballed. There is no indication that the roll will increase in future years as pre-school children numbers are very low and are likely to remain so. This option also has the benefit of supporting the sustainability of Braco Primary School, which is approximately 2 miles from Greenloaning Primary School and is also a small rural school. There is no evidence to indicate that this option would have an adverse impact on the community, travelling arrangements or the environment.

### **6.3 Re-open Greenloaning Primary School and suitability rating at Braco Primary School improved**

6.3.1 Calculations show that if the school re-opened in August 2018, the school roll would be a maximum of 3 pupils, rising slowly to 6 pupils if all the catchment pupils attended in the next 4 years.

6.3.2 There would be a revenue cost of approximately £125,451 annually if Greenloaning Primary school were to re-open. This is predominantly made up of staff and building costs. The capital cost of upgrading the building of £319,987 would be required for Greenloaning Primary School in addition to the costs associated with improving the suitability rating at Braco Primary School. The cost to improve the suitability and condition of Braco Primary School is approximately £2.1m. There would be additional costs for transporting the pupils to Greenloaning Primary School for the duration of the decant whilst improvement works were underway at Braco Primary School. Estimated preliminary costs for the decant is £233,500. There would also be a cost of £62,000 to improve facilities in the Braco Village Hall.

6.3.3 This is not a sustainable school roll and would incur significant increased costs and therefore this option is not considered to be a reasonable alternative.

### **6.4 Re-open Greenloaning Primary School and split the stages of education between both schools. Suitability rating improved at Braco Primary School**

6.4.1 This option proposed to transport children from Braco to Greenloaning to retain an operational school building in the village of Greenloaning.

This option would in effect be the closure of Greenloaning Primary School with the retention of the building and its operation as part of Braco Primary School operating over a split site.



- 6.4.2 This would require Braco Primary School building to be used for nursery to P3 pupils and the building at Greenloaning would be used for P4 – P7 pupils. Arrangements would need to be put in place to ensure that the educational and social environment for both sets of pupils was managed to take into consideration the separate locations. The school would have to consider how it may adapt learning and teaching to ensure that there is still a ‘whole school’ ethos over the two sites. In particular, arrangements would have to be made to ensure that younger children and older children were given opportunities to interact both socially and educationally and that vertical learning is still a feature of the curriculum. The transition between P3 and P4 would also need to be considered carefully.
- 6.4.3 Staggered school start and end times and possibly lunchtimes would need to be implemented to accommodate families who have children of different ages, who would be accommodated on separate sites two miles apart.
- 6.4.4 The costs for the upgrade of Braco Primary School are approximately £2.1m with additional decant costs of approximately £233,500. In addition there is a capital cost of £319,987 for upgrading the building at Greenloaning. There would also be an annual cost of £125,451 if Greenloaning Primary School was to re-open as an ‘annex’ of Braco Primary School. This is predominantly made up of staff and building costs. There would also be transport costs of approximately £35,100 to transport pupils from Greenloaning to Braco for PE and whole school events. Home to school transport for this option would currently be approximately £104,500 per annum.
- 6.4.5 This option would result in an operational school building remaining in Greenloaning. However, the benefits of having pupils attend a school building in Greenloaning as part of Braco Primary School are outweighed by the compromises that would have to be made. These include operating hours, logistical issues created for parents and the increase in daily travel of pupils and the impact this may have on learning and teaching. This would result in 18 pupils having to travel further to school than their current journey to Braco Primary School. Therefore this option is not considered to be a reasonable alternative.

## **6.5 Catchment areas of the schools are reviewed to determine whether this would increase the school roll at Greenloaning Primary School and ensure the future sustainability of both schools**

- 6.5.1 A catchment review can in principle be a reasonable option, in some cases, to increase the sustainability of a school. An in-depth analysis in each case is required to ascertain if a sustainable increase in school roll could be achieved and a detrimental impact on neighbouring schools is not created as a result.
- 6.5.2 There are limited numbers of pupils living in the catchment areas surrounding Braco Primary School and Greenloaning Primary School catchments and the boundaries would have to be moved a significant distance in each direction to increase pupil rolls. This would lead to some other rural school rolls being detrimentally impacted and pupils having increased travel time to reach their school.
- 6.5.3 Therefore, it is unlikely that increasing the catchment areas for the schools would lead to a sustainable roll at Greenloaning Primary School. This is due to the small numbers of children living in these areas. This option is therefore not considered a reasonable alternative.

## **6.6 Consider closing Braco Primary School and pupils moved to an extended Greenloaning Primary School**

6.6.1 The Greenloaning Primary School building and outdoor areas are currently more suitable than Braco Primary School, however the suitability at Braco Primary School can be improved.

6.6.2 This option would see the majority of pupils i.e. those from Braco Primary School having to travel further to reach their catchment school than they do currently.

6.6.3 The revenue cost for operating Greenloaning Primary School would increase to a similar amount of £248,443 which it costs to operate Braco Primary School as the schools would be a similar size. A revenue saving of approximately £125,161 would be anticipated if Braco Primary School closed. There would be additional transport costs of £108,000 associated with Braco pupils being transported to Greenloaning, which would reduce the revenue saving to £17,161.

6.6.4 Capital funding of approximately £2.2m would be required to increase the capacity at Greenloaning Primary School which is broadly equivalent to the cost of improving the suitability of Braco Primary School.

6.6.5 It is also possible that this option would put the future of the village hall in Braco at jeopardy. The Council has a management agreement with Braco Hall Committee for the village hall and the school is one of the main users of Braco Village Hall. The Hall is used daily for lunches and a number of times a week for other activities including PE. The school pays for the use of the hall and, therefore, it is possible that the future of Braco Village Hall would be at risk if the school no longer used and paid for the facilities. This would have a negative impact on both villages.

6.6.6 This option is not considered a reasonable alternative due to the fact that the majority of pupils live in or near Braco Primary School and would have to travel further to get to their local school.

## **7. THE OPTION FOR CONSULTATION FROM OPTIONS APPRAISAL**

7.1 The Options Appraisal has demonstrated that the option for the permanent closure of Greenloaning Primary School, with the pupils instead attending Braco Primary School, is the only reasonable alternative in response to the unsustainable school roll and represents the best value for education purposes. The following sections now consider that option in more depth.

## **8. BRACO PRIMARY SCHOOL**

8.1 The village of Braco is located approximately six miles to the south west of Auchterarder and approximately 2 miles from the A9. The school is situated on Feddal Road which is in the north of the village.

8.2 Braco Primary School provides non-denominational primary education from P1 – P7 to the pupils from the village of Braco and surrounding area.

There is also nursery provision at Braco Primary School which has provision for a maximum of 10 children at any one time, offering up to 20 part-time nursery places. A plan of the school site for Braco Primary School is attached as Appendix 4.

- 8.3 The catchment area for Braco Primary School adjoins the catchment areas for Comrie Primary School, Community School of Auchterarder Primary School, Blackford Primary School, Greenloaning Primary School and Stirling Council to the South. Appendix 2 shows the present school catchment area for Braco Primary School.
- 8.4 Braco Primary School has capacity for 68 primary pupils. The pupil roll is 50 pupils (Census 2017) at Braco Primary School. The occupancy based on the Census 2017 is 73.5%. The pupil roll of the nursery was 12 pupils (Census 2017).
- 8.5 Braco Primary School is classed as an “accessible rural” school under Section 14 of the Schools (Consultation) (Scotland) Act 2010. The classification of rural and remote rural is based on two main criteria, settlement size and accessibility based on drive time. For Braco Primary School the classification criteria is “areas with a population of less than 3,000 people and within a 30 minute drive time to a settlement of 10,000 or more”.
- 8.6 Historical and projected pupil roll data for Braco Primary School is attached as Appendix 6.
- 8.7 The school structure currently operates with 3 composite primary classes.
- 8.8 The Council owns the school site at Braco Primary School and also owns the village hall and the land that it sits on. The Council has a management agreement with Braco Hall Committee for the village hall. The school uses the village hall for PE and dining.
- 8.9 Braco Primary School has been graded ‘C’ for suitability (Poor – showing major problems and/or not operating properly - the school buildings and grounds support the delivery of services to children and communities). Braco Primary School was graded condition ‘B’ (Satisfactory – performing adequately but showing minor deterioration).
- 8.10 The impact on the school roll of new housing in the Braco Primary School catchment area has been examined and future pupil projections have been considered using aggregated GP registration data. Braco Primary School pupil numbers are projected to remain static over the next 4 years with little house building planned. The highest projected occupancy level, including house building, for future years at Braco Primary School is 82% in 2021/22. Pupil projections in the catchment area do not indicate that the potential pupil numbers will increase in the future and there is no suggestion going forward that this is likely to change.

## **9. EDUCATIONAL BENEFITS STATEMENT**

- 9.1 This Educational Benefits Statement is written from the perspective of benefits, should the preferred option outlined in the options appraisal subsequently be implemented. This statement is focused on the educational benefits for pupils attending Braco Primary School with the suitability rating of the school being improved.

## **Learning and Teaching**

- 9.2 Children attending Braco have access to a range of teaching and support staff from early years and primary. Braco has a nursery and three primary classes. This allows children to transition throughout the school as they get older and be taught by different practitioners in different settings.
- 9.3 Pupils have access to early years provision within the setting of the school, allowing for seamless transition to P1, with pupils already familiar with the physical setting as well as the opportunity for regular work with primary peers.
- 9.4 At Braco Primary School, staff are challenged and supported through a range of continuous professional development and review, which comes of having a Headteacher and three members of teaching staff, in three classes for 50 pupils (Census 2017). Staff are able to collaborate across the school for planning learning and teaching to ensure children receive experiences that are relevant and present clear challenge and enjoyment. Flexibility in staffing at Braco means that good use can be made of the local context for example by involving children in Forest Schools. Staff are also able to work together to moderate standards of learning and achievement in the school to ensure that children make appropriate progress in a structured and progressive way through Curriculum for Excellence levels.
- 9.5 A collegiate approach to professional engagement amongst all staff is evident within the school. They come together regularly to review and improve practice as a school, with partner services and other schools in the Local Management Group. This enhances the quality of learning and teaching through shared opportunities to develop effective approaches to learning and teaching and to share and moderate standards. Currently, Braco Primary School staff collaborate with other schools on 1+2 languages, maths development work and moderation of writing, allowing staff to share good practice across other schools in the area to enhance learning and teaching in Braco.
- 9.6 Work is differentiated to adapt to pupils' needs and pupils benefit from being able to work on co-operative learning tasks with others. Flexibility in staffing allows Braco to be creative in planning for children with additional support needs both universally and for targeted need thus removing potential barriers to learning.
- 9.7 Braco affords the opportunity for all children to build relationships with different groups and individuals, develop a range of skills and undertake group responsibilities, which the larger class sizes enable. This gives all pupils the opportunity to work in groups, at peer level and across all stages in the school and in mixed sex groups.
- This allows the sharing of ideas, peer support, informal mentoring and relationship building, all of which contribute to the whole school experience for all pupils.
- 9.8 Braco has support from a Pupil Support Teacher, which not only benefits pupils with Additional Support Needs, but all other pupils.

## **Environment for Learning**

- 9.9 Braco Primary makes use of the village hall. As part of the planned improvements to the school, the hall will benefit from improved access and upgraded toilet and redecoration providing better facilities for PE and community learning space. The adjacent park offers a wide range of opportunities for the pupils to experience a range of team and individual sports, such as football and cricket. The school also makes good use of local land and forest for the Forest Schools programme.

- 9.10 Braco Primary School's building will benefit from significant upgrade and adaptations including an extension that will provide upgraded accessible classroom spaces and flexible spaces to offer nurture support and meetings.
- 9.11 The school has a strong Restorative Practices values base to the learning environment where children are able to work together to investigate and solve problems.

### **Experiences and Opportunities**

- 9.12 Braco has pupils of both sexes at each stage, allowing all pupils to interact and socialise with groups of children their own age and sex, at appropriate levels.
- 9.13 The school hosts weekly 'Get Togethers' with children across the school coming together to celebrate and share learning. These also include parents and partners in the life of the school.
- 9.14 Braco has an active Parent Council, which supports the school in its work with parents and encourages links between school, parents, pupils and the community. Parental support enables the school to gain experiences outwith the local community, with trips to the theatre, ski trip for P5-7 and residential trip. The support of the Parent Council and the wider Parent Forum helps to provide resources to allow these to take place, as well as support through attendance on the trips.
- 9.15 There are opportunities available to pupils at Braco, through links with a school in Malawi, supporting resources and widening their understanding of the experiences and opportunities presented to children in another part of the world.
- 9.16 There are numerous opportunities, for both present and future pupils, for social interaction in terms of peer activities in class and at break times and access to school clubs and extra-curricular activities, team activities and sports, such as football and athletics. In addition, there are pupil committees, facilitated by a teacher, but pupil led. These are the Eco Council, Arts & Crafts, Baking and Health & Wellbeing. These Pupil Councils are comprised of children of all stages.
- 9.17 School pupils at Braco enjoy a number of links with the community, providing entertainment, church services and festivals and the inclusion of local people in the children's learning experiences. These opportunities foster a feeling of belonging for the children and their social and emotional skills are enhanced through the relationships built.

### **Summary of Educational Benefits**

- 9.18 The school roll allows all children to participate in peer support, classroom learning, and learning groups across stages and between classes, with the benefit of allowing children to have a wide and varied range of learning experiences.
- 9.19 Learning and teaching at Braco starts with the early years provision, with seamless transition to Primary One, affording opportunities for children at all stages to widen their social and educational experiences.
- 9.20 Braco Primary School building will benefit from a significant upgrade and adaptations, enhancing the environment for learning.

- 9.21 Re-designating the Greenloaning Primary School catchment area to Braco Primary School will allow all pupils access to a school with learning groups across all stages.
- 9.22 The range of learning experiences for children will be wide and varied, with classroom learning being supplemented by learning groups across stages and between classes, bringing with that the opportunity to share learning experiences between the youngest and oldest pupils, as well as within the immediate peer group.
- 9.23 All pupils will have access to peer support, helping to develop their social and interpersonal skills, both in the classroom and in the social activities available at the school.
- 9.24 The children and parents of Greenloaning Primary School will have access to an educational establishment which has a well-planned and committed approach to taking forward improvement. There is sufficient capacity at Braco Primary School to fully meet the needs of the Greenloaning Primary School children without having a detrimental impact on the learning of the existing pupils of Braco Primary School.

## **10. DETAILED ANALYSIS OF THE PROPOSAL**

- 10.1 This section provides a more detailed assessment of the proposal which is considered to be the only reasonable response to the unsustainable school roll at Greenloaning Primary School. It considers the “rural school factors” of community impact and impact on travel arrangements, as well as the Educational Benefits Statement above, all of which were considered during the options appraisal process.

### **LIKELY EFFECT ON THE LOCAL COMMUNITY**

#### **Community Impact – Loss of the school**

- 10.2 The number of primary pupils has fallen leading to a drop in the numbers of children living in the catchment area. However, it also seems to be the case that families who do live within the catchment area are more mobile and exercising their right to choose other schools for their children.
- 10.3 The community did not suggest that the lack of a school would deter new families from moving into the area. It is clear that families living in the catchment area are travelling to access education as well as other services and so it appears to be an accepted part of life within the community.
- 10.4 In 2017, the Council closed schools in Calvine (Struan Primary School) and Enochdhu (Straloch Primary School) after they had been mothballed for 5 years. The evidence from both areas was that families were not deterred from moving into the area by having to travel to a neighbouring village. There are clear parallels with Greenloaning in that the communities already travelled to other local communities to access services. Neither school/community was as accessible as Greenloaning, which is close to Dunblane, Auchterarder and Crieff and has good road links.
- 10.5 The evidence indicates that there will be little effect on the sustainability of the community if the school were to close.

## **Community Impact - Use of the Building**

- 10.6 Community events between Braco and Greenloaning are generally held within Braco Village Hall. There is little evidence that the Greenloaning Primary School building was well used by the community when it was operational.
- 10.7 There are no other facilities or services in Greenloaning other than the primary school. Although the school is described as important to the community, a large number of pupils attend alternative primary schools and the school has been mothballed due to lack of pupil numbers.
- 10.8 The Greenloaning community require to travel to access most services due to a lack of amenities within the village. This is facilitated by the fact that the village lies in close proximity to the main A9 trunk road. Many other communities in rural Perth and Kinross travel significantly further distances on more minor roads to access services.
- 10.9 The closure of the school would provide the community with an opportunity to use the building as a facility solely for community use. If the community do not use the school building upon closure, Braco Village Hall is approximately 2 miles from Greenloaning accessed by a main road. Closure of the school would therefore have little impact on the existing arrangements of the community.
- 10.10 This option supports the retention of Braco Village Hall for the use of both communities.
- 10.11 The Council has received enquiries from members of the community for the use of the building to benefit the community should it be closed.

## **11. LIKELY EFFECT CAUSED BY DIFFERENT TRAVELLING ARRANGEMENTS**

- 11.1 As Greenloaning Primary School is a rural school, special regard was paid to the rural school factors. These were considered fully in the Options Appraisal stage and were a focus of the pre-consultation with the community.
- 11.2 The travel distance from Greenloaning Primary School to Braco Primary School is approximately 2 miles (driving) with an approximate travel time of 4 minutes. The current travel arrangements have been in place since Greenloaning Primary School was mothballed in October 2016 and there are no known issues. There are small numbers of pupils travelling from Greenloaning to Braco (currently 8).
- 11.3 If Greenloaning Primary School was permanently closed, all children would be transported by the Council to Braco Primary School. The travel distance between Greenloaning and Braco is not far and in other more rural parts of Perth and Kinross it is not uncommon for pupils to travel greater distances on more minor roads to reach their school. Taking this option forward would not adversely affect the travel arrangements for current pupils and future pupils are unlikely to have hugely different travel arrangements.

- 11.4 Travelling for primary school education is common across Perth & Kinross because of the geography of the area. Prior to the mothballing of Greenloaning Primary School, a number of pupils from Greenloaning travelled to Braco Primary School by choice as the result of successful placing requests.
- 11.5 Staff in Perth and Kinross tend to travel throughout the area to work in schools. Many staff do not live within the catchment area of the school they work in. A distance of 2 miles is a relatively short distance to travel in rural Perth and Kinross. It is therefore considered that there is very limited impact on staff travelling arrangements.
- 11.6 The community requires to travel to access other services such as GP and dental surgeries, shops and post offices. Braco Primary School is closer than most other facilities which the community require to access.
- 11.7 As the school was not generally used by the community, there should be no impact on travelling arrangements for any other users of the school's facilities. In any event, the distance is relatively small and the local community is used to travelling to access other services.

## **12. IMPACT ON PUPILS**

- 12.1 Feedback from the Headteacher at Braco Primary School is that the pupils from Greenloaning Primary School have settled well into Braco Primary School and that generally both groups of parents are positive about the changes. This has been facilitated through the schools having a close relationship prior to the mothballing including a shared headship.
- 12.2 Works would take place to improve the suitability of Braco Primary School building and also to carry out planned maintenance on the village hall building. This would provide an improved environment for pupils, staff and, in the case of the hall, the wider community. Pupils would be decanted to Greenloaning Primary School while works were undertaken.

## **13. ENVIRONMENTAL IMPACT**

- 13.1 At the time Greenloaning Primary School was mothballed, 8 pupils were travelling to Braco Primary School from the Greenloaning Primary School catchment area as the result of successful placing requests, for which there is an environmental impact. This has been offset by the requirement to run Greenloaning Primary School as a mothballed building rather than as an operational building currently. This would continue to be offset if the school were closed.
- 13.2 Pupils from Greenloaning catchment area would be transported by the Council to Braco Primary School which reduces environmental impact as they would travel together rather than separately with parents.



## 14. EFFECTS ON STAFF AND SCHOOL MANAGEMENT ARRANGEMENTS

- 14.1 As Greenloaning Primary School is already mothballed, there will be no impact on school management arrangements at either Greenloaning or Braco Primary School from a formal closure of Greenloaning Primary School.

## 15. FINANCIAL IMPLICATIONS

- 15.1 The annual recurring net savings of the preferred option is made up of staff costs and building running costs. The financial implications of this proposal are as follows:

<b>OPTION</b>	<b>SAVINGS</b>
Cease education provision at Greenloaning Primary School and integrate within Braco Primary School	£123,511

- 15.2 The annual cost of mothballing Greenloaning Primary School is £1,650 which is made up of costs for energy, rates and property maintenance. See Appendix 8 for detailed financial information.
- 15.3 Any savings arising from the proposed option to close Greenloaning Primary School will be allocated against Education and Children's Services budget savings targets which have currently been set for the period 2018/19 – 2020/21. This will mitigate against making alternative budget reductions within other areas of Education and Children's Services, with a corresponding reduction in service delivery in that area.
- 15.4 The annual budget is built reflecting cost drivers such as the number of schools, buildings, staff and pupils. Therefore, if Greenloaning Primary School were to be closed then future years' budgets would not contain any allowance for staffing Greenloaning Primary School and there would be reduced property costs (and possibly no costs, should the building be declared surplus to the Council's requirements). Any per capita budgets relating to individual pupils would continue to be budgeted against the school that these pupils would attend following the closure of Greenloaning Primary School.
- 15.5 It is envisaged that the existing Greenloaning Primary School will be declared surplus to the requirements of Perth and Kinross Council. This will minimise the financial risks associated with vacant buildings.
- 15.6 A capital receipt would be forthcoming if the building was sold or income could be generated through a lease.
- There have been notes of interest in the school building should it close and subsequently be sold or leased, so it is likely that an alternative use for the building could be found. The closure of the school could present the local community with an opportunity for alternative uses of the building.
- 15.7 Combining pupils from both catchment areas into one school maximises use of the school estate and represents good asset management, while also enabling the children to continue to attend a rural school. Additionally, the increased roll at Braco Primary School contributes towards ensuring a sustainable pupil roll there.

## **16. OTHER ISSUES**

### **Management of Proposals**

- 16.1 It is intended that pupils from Greenloaning Primary School will be permanently integrated within Braco Primary School from 1 July 2019, or as soon as possible thereafter. This will allow the Council to conduct the necessary consultation in accordance with the relevant statutory frameworks.

## **17. MITIGATION OF ADVERSE EFFECTS**

- 17.1 The main adverse effect for some children from Greenloaning is the length of journey from Greenloaning to Braco. However, as the school has been mothballed since October 2016, a number of current pupils are already making this journey without any issue. Prior to mothballing, a number of pupils travelled to Braco Primary School as the result of successful placing requests.
- 17.2 Funded school transport would be provided by Perth and Kinross Council to primary pupils from Greenloaning catchment area attending Braco Primary School.

## **18. CONCLUSION**

- 18.1 In summary, it is proposed that a statutory consultation exercise takes place on a proposal to close Greenloaning Primary School. As a result, pupils would be zoned to Braco Primary School and the catchment area of Greenloaning Primary School would be redelineated to Braco Primary School.
- 18.2 Although the school is described as important to the community, a large number of pupils attend alternative primary schools and the school has been mothballed due to lack of pupil numbers.
- 18.3 Data from the NHS shows a small number of pre-school children living in the catchment area over the next 4 years.
- 18.4 The projected pupil roll for Greenloaning Primary School, if it was to re-open, is likely to be a maximum of 6 pupils in the next 4 years. This is insufficient to create a sustainable roll. It is also likely, given past patterns, that parents of new P1s would chose to send their child to Braco Primary School, which is approximately 1.7 miles away, or an alternative primary school and that the roll may not reach 6 pupils.
- 18.5 Future pupil projections have been considered and Braco Primary School can accommodate all projected and potential pupils from the combined catchment areas. A higher occupancy level maximises use of the school estate and represents good asset management.
- 18.6 Travel distance to the neighbouring school is not excessive and pupils attending Braco Primary School already make this journey. However, it is recognised that adverse weather in the winter can impact on travel arrangements in this area.

- 18.7 Members of the community are travelling to access other services such as GP and dental surgeries, shops and post offices and so it appears to be an accepted part of life within the community.
- 18.8 Environmental impacts have been summarised and detailed work will be done as part of the environmental assessment for this proposal.
- 18.9 The only option which is considered to be a reasonable response to address the issue of an unsustainable school roll is to consider closing Greenloaning Primary School, with the pupils transferring to Braco Primary School. Special regard has been given to the rural school factors and the assessment of these is set out in the options appraisal and in this Proposal Paper. The anticipated educational benefits which are likely to occur, should that option be progressed and implemented, are also considered.
- 18.10 It is therefore recommended that the most appropriate response to the issues identified in relation to the very low roll at Greenloaning Primary School is that a statutory consultation exercise takes place on a proposal to close the school. As a result, pupils would be transferred to Braco Primary School. The delineated area of Braco Primary School would be extended to subsume the whole catchment of Greenloaning Primary School.

## **19. RESPONDING TO THE PROPOSAL**

- 19.1 Interested parties are invited to respond by making online, electronic or written submissions on the proposal or any alternative proposals.

Online: [www.pkc.gov.uk](http://www.pkc.gov.uk)

By e-mail: [ECSStatutoryConsultations@pkc.gov.uk](mailto:ECSStatutoryConsultations@pkc.gov.uk)

In writing: Greenloaning Primary School Consultation, Education and Children's Services, 2 High Street, Perth, PH1 5PH

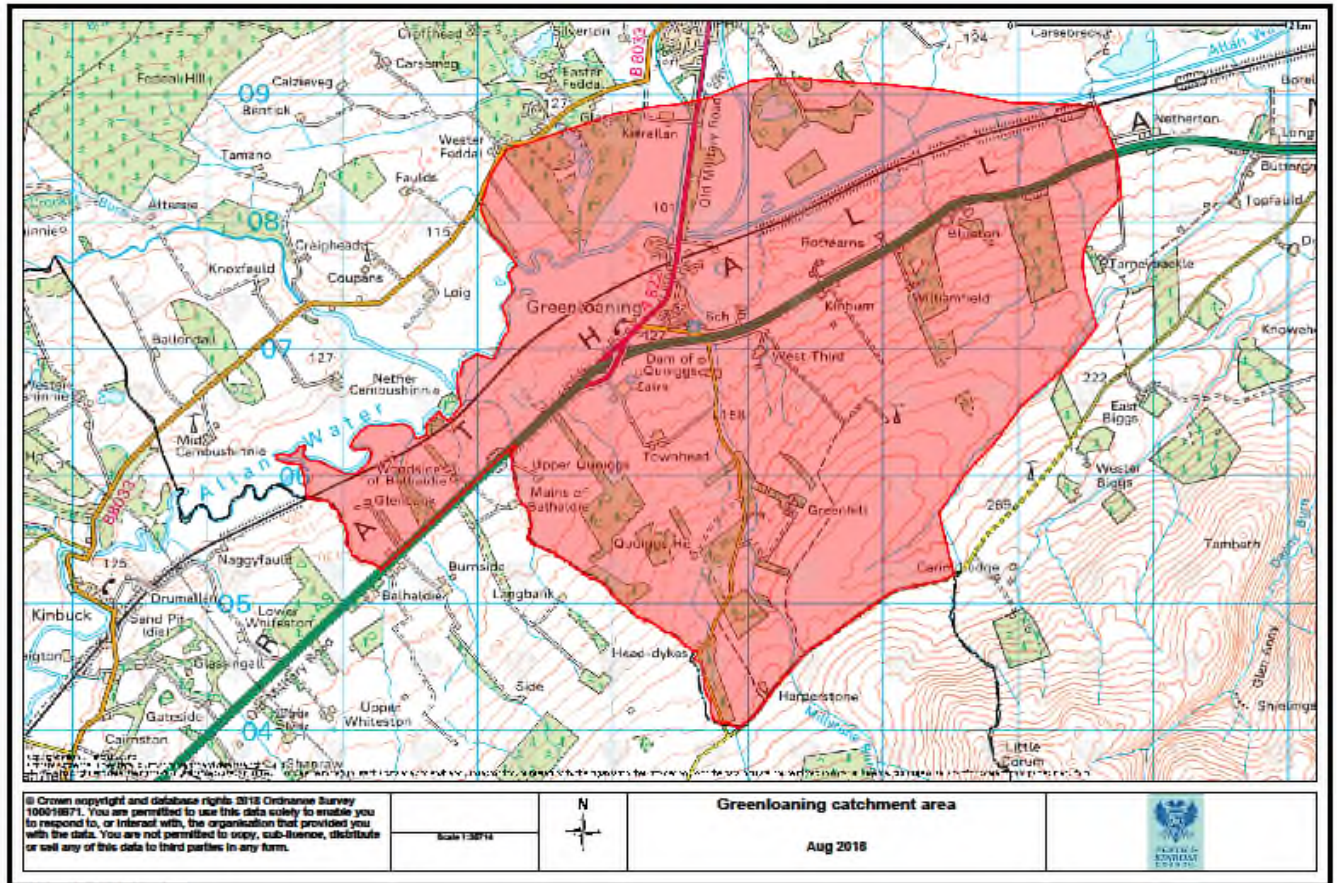
**no later than close of business on Friday 5 October 2018.**

- 19.2 A form is provided at Appendix 7 for the convenience of those wishing to respond.
- Its use is not compulsory. However, those wishing to respond are invited to state their relationship with the school – for example, “pupil”, “parent”, “grandparent”, “former pupil”, “teacher in school”, “member of the community” etc. Responses from the Parent Councils, staff, and Pupil Council are particularly welcome.
- 19.3 Those sending in a response, whether electronically or by letter, should know that their response will be open to public scrutiny and may have to be supplied to anyone making a reasonable request to see it.
- 19.4 If they do not wish their response to be publicly available, they should clearly write on the document: “I wish my response to be considered as confidential with access restricted to elected members and council officers of Perth and Kinross Council.” Otherwise, it will be assumed that the person making the response agrees to it being made publicly available.

21 August 2018

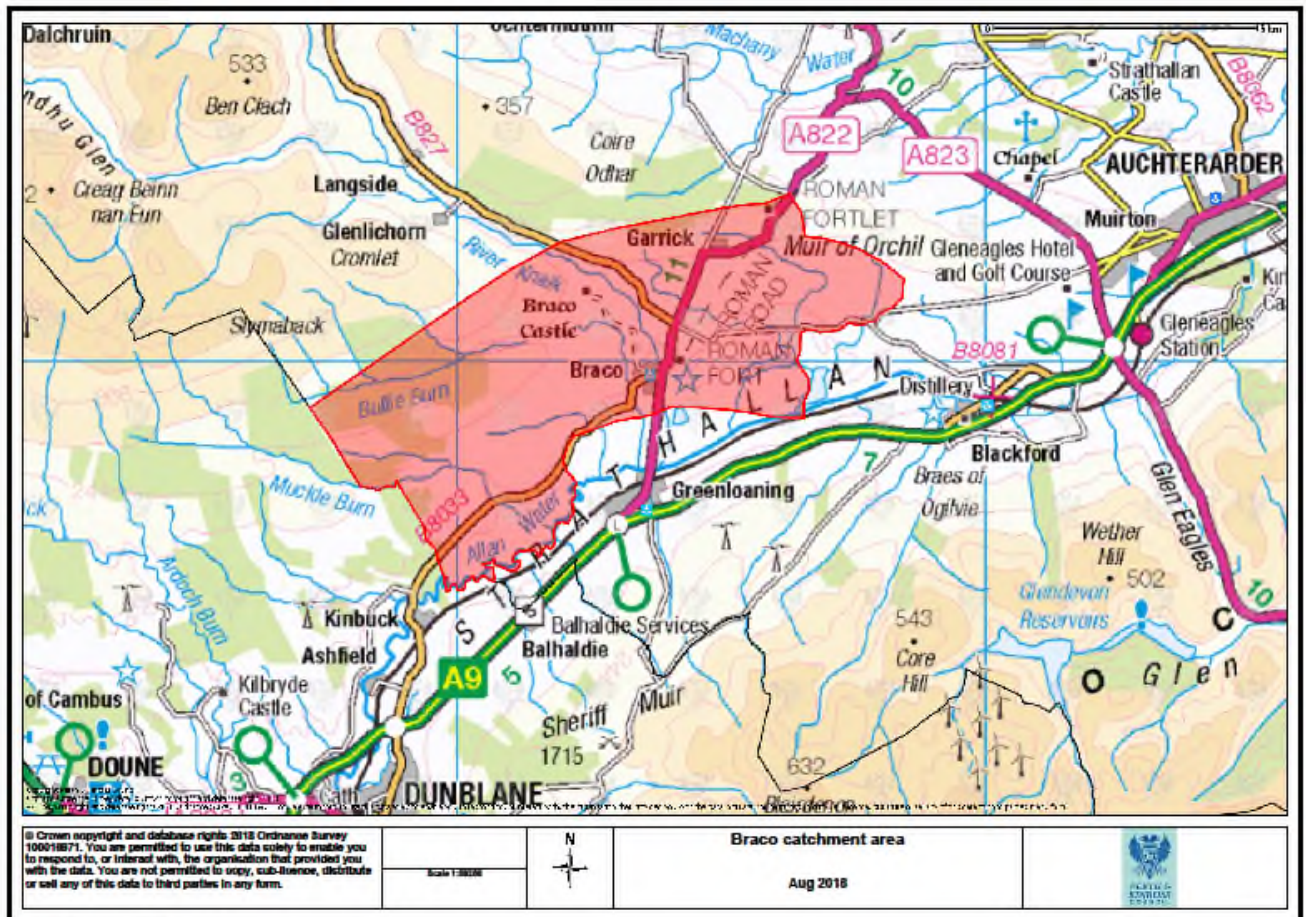
Sheena Devlin  
Executive Director (Education and Children's Services)

CATCHMENT AREA OF GREENLOANING PRIMARY SCHOOL



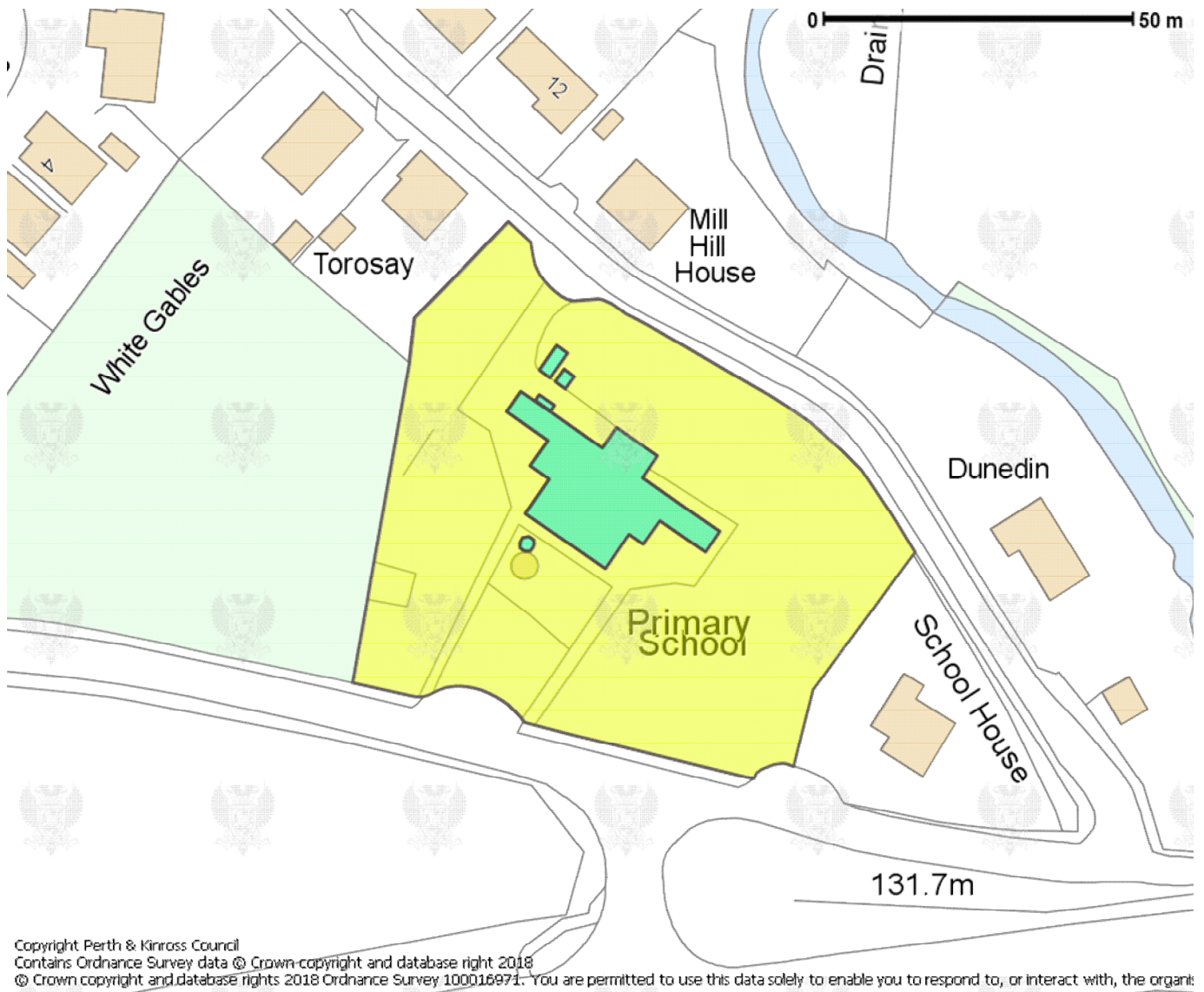
Created by Gillian Holden on 21 August 2018

CATCHMENT AREA OF BRACO PRIMARY SCHOOL

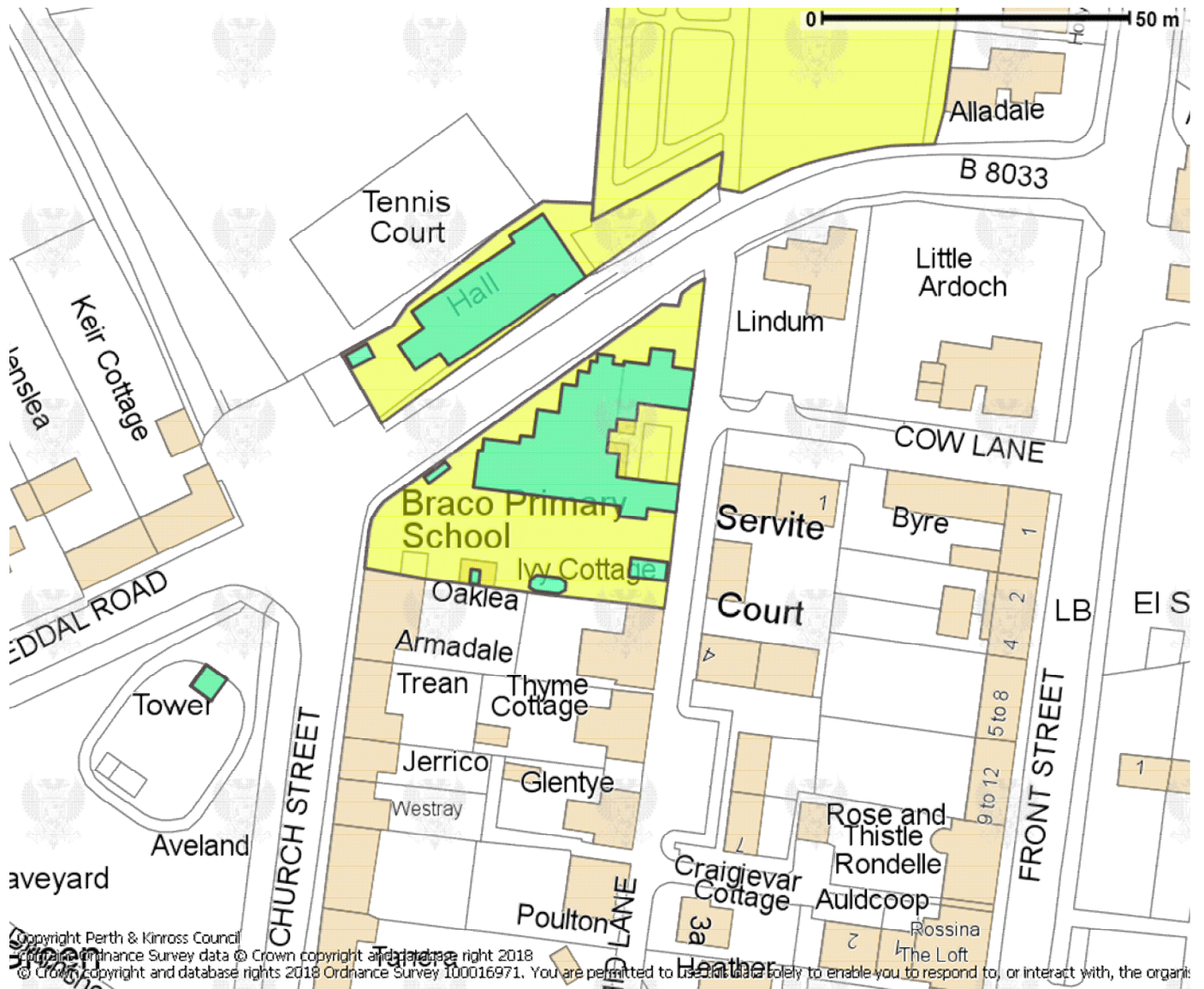


Created by Gillian Walker on 21 August 2018

OUTLINE OF GREENLOANING PRIMARY SCHOOL BUILDING AND THE SCHOOL



OUTLINE OF BRACO PRIMARY SCHOOL BUILDING AND THE SCHOOL GROUNDS





## HISTORICAL AND PROJECTED PUPIL ROLL DATA FOR GREENLOANING PRIMARY SCHOOL

	2010	2011	2012	2013	2014	2015	2016	2017
Capacity	49	49	49	49	49	49	49	49
Pupils in school	29	24	15	18	14	12	7	n/a

Source: [Scottish Government – School Education - Datasets](#)

## PROJECTED PUPIL NUMBERS

	2018/ 2019	2019/ 2020	2020/ 2021	2021/ 2022
<b>Greenloaning Primary School Capacity</b>	49	49	49	49
<b>Pupils returning to school – assumes only pupils who were in attendance when school mothballed</b>	3	2	2	1
<b>New P1s – assuming all P1s from catchment attend Greenloaning Primary School</b>	0	1	1	3
<b>Greenloaning Primary School Roll</b>	3	3	4	6

## ANALYSIS OF SCHOOL INFORMATION

School	Capacity	Condition Rating	Suitability Rating
Greenloaning	49	B	B

## APPENDIX 6

### HISTORICAL AND PROJECTED PUPIL ROLL DATA FOR BRACO PRIMARY SCHOOL

	2010	2011	2012	2013	2014	2015	2016	2017
Capacity	68	68	68	68	68	68	68	68
Pupils in school	63	64	64	54	53	53	49	50

Source: [Scottish Government – School Education - Datasets](#)

### PROJECTED PUPIL NUMBERS

	2018/ 2019	2019/ 2020	2020/ 2021	2021/ 2022
<b>Braco Primary School Capacity</b>	68	68	68	68
<b>Braco Primary School Roll</b>	51	51	53	56

### ANALYSIS OF SCHOOL/PUPIL INFORMATION

<b>School</b>	<b>Capacity</b>	<b>Condition Rating</b>	<b>Suitability Rating</b>
Braco	68	B	C



**Education and Children's Services  
Consultation Response Form**

**Consultation Proposal:**

- Provision of a school at Greenloaning Primary School be permanently discontinued with effect from 28 June 2019, or as soon as possible thereafter;
- That the pupils of Greenloaning Primary School catchment area permanently receive their education at Braco Primary School from 1 July 2019, or as soon as possible thereafter; and
- That the delineated catchment area of Braco Primary School be permanently extended to subsume the whole delineated catchment area of Greenloaning Primary School from 1 July 2019.

Please tick the response which applies to you/your organisation

- I agree with the proposals as outlined in this consultation.....
- I disagree with the proposals as outlined in this consultation .....

I would like to make the following representation for consideration:  
(if required, please continue on the other side of this sheet)

Are there any other alternatives which you consider should have been included?

**This part of the form must be completed for a valid response:**

Name: \_\_\_\_\_ Address: \_\_\_\_\_  
 \_\_\_\_\_  
 \_\_\_\_\_  
 Email: \_\_\_\_\_ Postcode: \_\_\_\_\_

**Your Interest: (please tick)**

Parent  Child / Young Person  Staff  Other \*

\*Other: (please specify) \_\_\_\_\_

Elected Member / MSP / MP  Member of Community Council

I wish my response to be considered as confidential with access restricted to Elected Members and Council Officers of Perth & Kinross Council

## Appendix 8

<b>Greenloaning Primary School</b>	<b>Costs for full financial year (2017-18)</b>	<b>Additional financial impact on receiving school [Braco]</b>	<b>Annual recurring savings (column 2 minus column 3)</b>
<i>School costs</i>			
<i>Employee costs -</i>			
teaching staff	£ 80,301.00	£ -	£ 80,301.00
support staff	£ 18,466.00	£ -	£ 18,466.00
teaching staff training (CPD etc)	£ 475.00	£ -	£ 475.00
Supply costs	£ 1,473.00	£ -	£ 1,473.00
Slippage Target	-£ 2,182.00	£ -	-£ 2,182.00
<i>Building costs:</i>			
non domestic rates	£ -	£ -	£ -
water & sewerage charges	£ 444.00	£ -	£ 444.00
energy costs	£ 7,516.00	£ -	£ 7,516.00
cleaning (contract or inhouse)	£ 6,089.00	£ -	£ 6,089.00
building repair & maintenance	£ 9,794.00	£ -	£ 9,794.00
grounds maintenance	£ 1,435.00	£ -	£ 1,435.00
other	£ 446.00	£ -	£ 446.00
<i>School operational costs:</i>			
learning materials	£ 1,164.00	£ 289.80	£ 874.20
<i>Transport costs: note 3</i>			

home to school	£ -	£ -	£ -
other pupil transport costs	£ -	£ -	£ -
staff travel	£ 30.00	£ -	£ 30.00
<b>SCHOOL COSTS SUB-TOTAL</b>	£ 125,451.00	£ 289.80	£ 125,161.20
Income:			
Other	£ -		£ -
<b>SCHOOL INCOME SUB-TOTAL</b>	£ -		£ -
<b>TOTAL COSTS MINUS INCOME FOR SCHOOL</b>	£ 125,451.00	£ 289.80	£ 125,161.20
<b>UNIT COST PER PUPIL PER YEAR</b>	£ 17,921.57	£ 41.40	£ 17,880.17

**Annual Property costs incurred (moth-balling) until disposal**

property	£ -
non domestic rates	£ -
water & sewerage charges	£ 400.00
energy	£ 1,250.00
cleaning (contract or inhouse)	£ -
security costs	£ -
building repair & maintenance	£ -
grounds maintenance	£ -
other	£ -
<b>TOTAL ANNUAL COST UNTIL DISPOSAL</b>	£ 1,650.00

**Notes**

1. The total costs incurred for teaching staff (row 5) and support staff (row 6) are required to be included. Column 2 should include the current costs for a full financial year for the school proposed for closure, and column 3 should include the *additional* cost to the receiving school as a result of staff transferring.

For teaching staff, this should include regular teachers, itinerant teachers, learning support teaching staff and special education (ASN) staff. Itinerant teaching staff includes central support services such as English as additional language support, hearing, visually impaired services, educational psychology services.

For support staff, this should include classroom assistants, administration staff and janitorial staff.

For all staff the costs entered should include salary, NI and pension costs.

If the school proposed for closure has less than 3 staff members, then the cumulative staff costs only should be given in row 5 (for both

teaching and support staff), so as to avoid possible disclosure of individual salaries. Training costs should be identified separately in rows 7 and 8.

2. Supply costs to cover teaching and support staff. This may be held in a central budget, be devolved or shared across the budgets.
3. 'Home to school' pupil transport costs should include those school transport costs incurred in accordance with Council policy. 'Other pupil transport costs' will cover costs incurred for the transport of pupils for activities such as swimming etc
4. Row 30 of column 3 should include the additional transport costs related to the increased home to school transport arrangements that are put in place in accordance with Council policy. This figure is therefore likely to be considerably higher than current costs.
5. This table is to capture the impact on the revenue support grant as a result of changes to GAE. Impact on GAE should consider the issues covered in the GAE section of the guidance document that accompany this template.
6. Facilities management costs will include costs related to caretaking, janitorial and security.
7. The capital costs for the receiving school should be taken across the life cycle of the school in line with the life expectancy of that school. The capital costs for the school proposed for closure should be taken across the same life cycle period.