

APPENDIX A

PERTH AND KINROSS COUNCIL

EDUCATION AND CHILDREN'S SERVICES

OPTIONS APPRAISAL REPORT

LOGIEALMOND PRIMARY SCHOOL AND METHVEN PRIMARY SCHOOL



1. Introduction

The Council's Corporate Plan identifies the vision of *'a confident and ambitious Perth and Kinross with a strong identity and clear outcomes that everyone works together to achieve. Our area will be vibrant and successful; a safe secure and healthy environment; and a place where people and communities are nurtured and supported'*.

This strategic approach embraces the vision for our area, our communities and our people as outlined in the Corporate Plan. Our key service priorities support the delivery of our commitments in the Community Planning Partnership's Single Outcome Agreement and Corporate Plan, helping Education and Children's Services to focus on the local outcomes that will achieve meaningful improvements for the area, our local communities and our citizens.

Councils, as an Education Authority, have a statutory duty in terms of the Education (Scotland) Act 1980 to make adequate and efficient provision of school education across their entire area for the current school population and future pattern of demand.

Councils also have a statutory responsibility in terms of the Local Government in Scotland Act 2003 to achieve best value.

The school estate is a significant and valuable asset to the communities of Perth and Kinross. From 2017 to 2023, the Council will invest £141m in the school estate, including a number of new or replacement primary schools and a substantial upgrade programme for secondary schools. In addition the Scottish Government is funding a new £32.5m secondary school at Bertha Park.

The School Estate Strategy ([Report No. 12/370 refers](#)) sets out the Council's aspirations for our schools, and in particular the high value we place on learning, through our vision for well designed, maintained and managed schools. The [School Estate Management Plan](#) details how we plan to deliver the strategy.

It is important, in light of the significant investment and cost associated with the school estate, that it is managed in an efficient and effective manner, and that the priorities which are addressed meet the wider strategic objectives of the Council and the needs of our communities.

2. Background

2.1 Transformation

There are significant challenges for managing the school estate over the coming years. These include changing demographics including population growth, and house building in certain locations and reduction in population in other areas. This has led to an 'imbalance' in occupation of the school estate, with roll pressures in some urban schools and under-occupation in some rural schools.

There is also ongoing deterioration in building infrastructure, pressure on planned maintenance budgets, increasing revenue costs and the extension to Early Years

provision which are challenging in terms of funding and maintenance of the school estate.

The Council's Transformation Strategy 2015-2020 'Building Ambition' and Organisational Development Framework were approved by Council on 1 July 2015 ([Report No. 15/292](#) refers). Together they detail how Perth and Kinross Council will deliver transformation over the next five years. Accompanying the strategy is a programme of major reviews which are considered to be key drivers and enablers of transformation across the organisation.

As part of the Council's Transformation Programme 2015-2020, a review of the school estate was approved. On 24 August 2016, the Council approved the report "Transformation – School Estate Review" ([Report 16/347 refers](#)). This report proposed principles to be used to prioritise investment and as a basis for a high level review of the school estate. The purpose of the transformation review is to support the delivery of better outcomes for all of our young people through more effective use and management of the school estate.

It should be noted that previous reports have been submitted to Lifelong Learning Committee with recommendations regarding Logiealmond Primary School.

The first report ([Report 10/428 Refers](#)) requested approval from Lifelong Learning Committee to proceed with undertaking an options appraisal and, if appropriate, produce a Proposal Paper containing an Educational Benefits Statement in respect of Logiealmond Primary School. The options to be considered included the possible closure of the school.

The next report ([Report 11/428 Refers](#)) advised Lifelong Learning Committee of the outcome of the Options Appraisal undertaken in respect of Logiealmond Primary School and recommended that the school remained open with a limited review of the catchment area.

A further report ([Report 12/316 refers](#)) to a meeting of Lifelong Learning Committee on 15 August 2012, recommended not to proceed with the following proposal, following a statutory consultation.

“the catchment area of Logiealmond Primary School be extended to subsume the delineated area of Glenalmond College site with a corresponding reduction in the catchment area of Methven Primary School from Monday 7 January 2013”.

The recommendation was approved and no changes were made to the catchment area.

2.2 Basis of review

The principles approved as a basis for the review are:

- (i) Every school should be rated as A or B i.e. at least satisfactory for condition and suitability;
- (ii) Schools should have an occupancy rate where possible greater than 60% of the capacity and ideally should be operating at between 80% and 100% capacity; and
- (iii) Life expired buildings within the school estate should be prioritised for replacement.

2.3 Options Appraisal

This report is the options appraisal for Logiealmond Primary School and Methven Primary School. This will be submitted to Lifelong Learning Committee of the Council which will determine whether any statutory consultation will proceed.

2.4 Inclusion of Logiealmond Primary School and Methven Primary School

On 2 November 2016, the Council approved the report “Securing the Future of the School Estate – Next Steps” ([Report 16/485 refers](#)). This report detailed the outcome of the high level review and proposed to proceed with further work on the schools which did not meet the suitability, condition or occupancy principles.

In this report, it was agreed that an options appraisal should be carried out on Logiealmond Primary School due to under-occupancy and Methven Primary School due to under-occupancy and a Condition rating of ‘C’ with life expired buildings.

At that time, Logiealmond Primary School had a pupil roll of 12 (School Census 2015) and an approved capacity of 48 giving an occupancy of 25%.

Methven Primary School had a pupil roll of 120 (School Census 2015) and an approved capacity of 229 giving an occupancy of 52%. Methven Primary School was Condition rating “C” with life expired buildings.

2.5 Current Position

Logiealmond Primary School has a roll of 14 (Census 2017) with an occupancy of 29%. A condition survey was carried out on the school on 19 January 2017 and the condition rating changed from a “B” to a “C” rating.

Methven Primary School has a roll of 118 (Census 2017) with an occupancy of 52%. The condition rating for the school is “C”.

The options appraisals for Logiealmond Primary School and Methven Primary School have been combined as the schools share a boundary and some of the options relate to both schools.

3 Legislation

The Schools Consultation (Scotland) Act 2010 provides a strong, accountable statutory consultation process that local authorities must apply to their handling of all

proposals for school closures and other major changes to schools. These consultation processes are expected to be robust, open, transparent and fair, and seen to be so. They are also expected to be consistent across Scotland.

The 2010 Act makes special arrangements in relation to rural schools, establishing a presumption against closure of rural schools. The result of this is that education authorities must have special regard to a number of factors before formulating a proposal to close a rural school and in consulting on and reaching a decision as to whether to implement a rural school closure proposal. These factors are:

- Effect on the Community
- Effect on Travel Arrangements
- Educational Benefits

The duties are outlined in the [Schools \(Consultation\) \(Scotland\) Act 2010](#) and the accompanying [Statutory Guidance](#).

In order to ensure a robust approach to each option appraisal carried out under the School Estate Review the factors that require to be considered as part of a rural school closure will be adopted in all cases.

The Education (Scotland) Act 2016 amends the Standards in Scotland's Schools Act 2000 by adding in new duties to address inequality of outcome. These duties apply in different ways to both Scottish Ministers and education authorities.

Where the education authority is making or implementing strategic decisions about school education, it is required to have due regard to the need to carry out its functions in a way which is designed to reduce inequalities of outcome. This is particularly directed in the Act towards pupils who experience those inequalities through socio-economic disadvantage, but there is also a power to extend the range of pupils who are covered by this duty.

In addition, the [Community Empowerment \(Scotland\) Act 2015](#) sets out a new right for community organisations to request the transfer of local assets into local community ownership/management. Public bodies including Councils must consider such requests and respond within a reasonable timescale to them.

3.1 Community Engagement and Feedback

The Statutory Guidance promotes informal consultation or “pre consultation” with communities regarding a proposal before a formal 2010 Act proposal paper is formulated. The Statutory Guidance recommends ‘early engagement with the local community’ with a view to:

- ‘establishing possible alternatives’;
- ‘information gathering and sharing in advance of a statutory consultation’;
- ‘engaging and empowering communities to understand and help shape the proposals that affect them’.

Details of the feedback from the community sessions are contained in Appendix 1. Relevant feedback is also referred to in the later sections of this document, to

provide the community view of the impact of the options. The feedback which is detailed in the Appendix has been issued to the Parent Council, Headteacher and Community Council and published on the Council website.

There were a range of views expressed during the community engagement process on the future of Logiealmond Primary School and Methven Primary School.

The key themes which emerged for Logiealmond Primary School are as follows:

- Parents and the wider community do not want to see Logiealmond Primary School closed.
- Parents and the wider community feel that increasing the size of the catchment and offering transport to pupils would make the school more attractive to prospective parents.
- There is a feeling that providing nursery and after school care would attract a significant number of additional pupils to the school.

The key themes which emerged for Methven Primary School are as follows:

- There is an acknowledgement amongst those attending the drop-in session that the school requires refurbishment.
- Parents should have the choice of where to send their children but there is an understanding that it costs money to keep a small rural school open.
- Breakfast and after school clubs would be welcomed within the school and if Logiealmond Primary School pupils were to attend this school this would be beneficial for Logiealmond Primary School pupils parents as well as Methven Primary School parents.

4. Methven, Logiealmond and the Local Area

4.1 Logiealmond Primary School – Location of School

Logiealmond Primary School lies on the B8063, approximately 10.4 miles from Perth. Logiealmond Primary School sits on its own and is approximately 0.4 miles from the small community of Harrietfield and approximately 1 mile from Chapelhill. The school lies approximately 4.4 miles from Methven Primary School, approximately 6.7 miles from Pitcairn Primary School, approximately 9.2 miles from Auchtergaven Primary and approximately 14.9 miles from Royal School of Dunkeld Primary School¹.

The Scottish Government's Rural School List 2017 classifies Logiealmond Primary School as "accessible rural" school under Section 14 of the Schools (Consultation) (Scotland) Act 2010. The classification is based on two main criteria, settlement size and accessibility based on drive time. For Logiealmond, the classification criteria is "areas with a population of less than 3,000 people and within a 30 minute drive time of a settlement of 10,000 or more" (Source: Scottish Government Rural School List 2017).

¹ Source: Google maps 2017.

4.2 Methven Primary School - Location

Methven Primary School is on the A85 in the village of Methven, approximately 6.5 miles from Perth. The school serves the community of Methven and the surrounding areas.

Approximately 20% of the pupils at the school live within the rural areas surrounding Methven, rather than within the village itself.

The Scottish Government's Rural School List 2017 classifies Methven Primary School as "accessible rural" school under Section 14 of the Schools (Consultation) (Scotland) Act 2010. The classification is based on two main criteria, settlement size and accessibility based on drive time. The classification criteria is "areas with a population of less than 3,000 people and within a 30 minute drive time of a settlement of 10,000 or more" (Source: Scottish Government Rural School List 2017).

4.3 Local Area and Community

Logiealmond Primary School is close to the hamlets of Chapelhill and Harrietfield. There are a number of farms in the area.

Glenalmond College, an independent boarding and day school for 12 – 18 year olds, is approximately 3.6 miles from Logiealmond Primary School.

In Chapelhill there is a local inn and hall for community use. The hall is used by the community and the school. The hall hosts various events over the year including the New Year's dance, concerts and the Scottish Women's Institute monthly meetings.

The Chapelhill Inn hosts events and activities that residents of Glenalmond, Chapelhill and Harrietfield attend. These events include bike nights, Hogmanay parties, afternoon teas and quizzes. The inn also runs a mini bus service to Methven during the festive season. The inn is approximately one mile from Logiealmond Primary School.

A GP surgery, post office, small convenience stores, restaurant, café, church and community centre are available in Methven, which is the closest village. Chapelhill and Harrietfield are approximately 5 miles from Methven.

Methven Community Council covers the Logiealmond area.

At the pre-consultation the community were asked to describe the community within Logiealmond, some of the comments are as follows:

- *The community is not well serviced – there is no local public transport, there is issues about water, broadband is patchy or non-existent. The school is one of the few services remaining;*
- *Farming community and elderly retirees. Logiealmond School is the heart of the community;*

Methven

Methven is a village in central Perth and Kinross, situated between the River Almond and the Pow Water. Methven lies approximately 6.5 miles to the west of Perth, between Perth and Crieff on the A85. There is a population of approximately 1200 residents. The village, which largely comprises a single main street (A85), was developed in the 19th Century as a jute and linen manufacturing settlement and a railway junction.

Methven has a post office, small convenience stores, garages, restaurant, café, a kitchen and bathroom showroom, church and a community centre.

The community centre is used most nights by different organisations. The residents of Methven have made a difference to the local area by securing funding to improve the community centre and local park – the King George V Playing Fields.

At the community drop-in session, people were asked to describe the community and some information on the community was also provided through comments on the options. Some views were as follows:

- *School is hugely important part of the community. It's where children and their parents can meet people/make friends. "Heart of the community";*
- *I think Methven is quite a close community and the school plays a big part in that. People who perhaps otherwise would not engage in events in the community, do so when they have a link to the school (relative, neighbour etc.);*
- *I live in the outer catchment areas for Methven PS so feel that I only really come to Methven for school. So very important.*

4.4 Population

Logiealmond Primary School

Data on children living in the Logiealmond Primary School catchment area who are registered with a GP shows there are likely to be 17 pre-school children in the school catchment area over the next 4 years.

Actual P1 pupils attending the school since 2010 have however been low in relation to the numbers expected, with only 13 P1 pupils joining the school out of a potential 37;

	2010	2011	2012	2013	2014	2015	2016	2017
P1 aged pupils (catchment area) due to attend Logiealmond Primary School	8	6	3	5	4	3	3	5
P1 pupil intake at Logiealmond Primary School	2	5	1	1	0	1	3	0

Table 1 – Logiealmond Primary School – P1 aged pupils due to attend school and actually attending school.

Methven Primary School

Data on pre-school children registered with GP practices living in the Methven catchment area shows that numbers have remained consistent each year.

	2010	2011	2012	2013	2014	2015	2016	2017
P1 aged pupils (catchment area) due to attend Methven Primary School	18	21	19	17	17	22	25	18
P1 pupil intake at Methven Primary School	15	16	16	17	22	24	17	13

Table 2 – Methven Primary School – P1 aged pupils living in catchment area

There are likely to be 60 pre-school children registered in the school catchment area over the next 4 years (based again on data relating to children registered with a GP practice).

4.5 Socio Economic Factors

The Council uses the Scottish Index of Multiple Deprivation (SIMD) and ACORN data to understand levels of deprivation across Perth and Kinross and also in individual schools. Appendix 5 explains SIMD and ACORN.

There are no pupils attending Logiealmond Primary School who are socio economically deprived on the basis of SIMD and ACORN classification.

There are < 5 pupils attending Methven Primary School who live in an area which is classed as socio economically deprived.

Methven Primary School received Pupil Equity Funding. PEF is being provided as part of the £750m Attainment Scotland Fund which will be invested over the current Parliamentary term to tackle the poverty related attainment gap.

4.6 Development, House building and Employment

The current Local Development Plan (LDP) was adopted in 2014 and the Council is required to keep it up to date and review it at a maximum of five year intervals.

The TAYplan sets out a hierarchical approach to directing new development to existing settlements and identifies Perth Core Area as the tier 1 settlement which should take the majority of new development.

The LDP confirms a site on the east of Methven has planning permission for 103 houses. The site lies adjacent to the houses recently constructed by the Council and no further development is required in the village during the life of the plan.

There is no planned house building for the 'Logiealmond' area contained within the LDP or Housing Land Audit^[1] (HLA) 2016. There are no tiered settlements in this area.

There is also a lack of access to public water supply in this area, and the legal requirements to ensure a suitable drinking supply without prejudicing existing users will likely limit/discourage development opportunities in this area. It can prove to be difficult and expensive for developers to comply with the Water (Scotland) Act 1980 and associated Private Water Regulations.

On the west side of the Tay, Scone Estate stretches from Pitcairngreen up to North Logiealmond. The estate owns properties in the Logiealmond Primary school catchment area including the school itself.

The estate lets housing in the areas for which there is a waiting list. Issues with the private water supply have been preventive in both renovating and letting houses within the area and restricting any further development. The estate advises that they are in the process of investing heavily in a new borehole system which should allow further properties to become available.

The estate advises that they would be willing to consider new housing development in the area to assist with supporting the primary school, once the water supply is upgraded to a point where it is capable of supporting more homes. Current planning policies in this area are based on the "Housing in the Countryside" policy which currently provides opportunities for small scale type development within small rural settlements and countryside locations.

The Proposed Local Development Plan (LDP) 2 was approved for consultation by Council on November 22 2017. The aspiration is to have a final LDP to adopt by spring 2019.

There are no changes proposed for Logiealmond or Methven in LDP2.

4.7 The School within the Community

Logiealmond

At the pre-consultation the community were asked to describe the community within Logiealmond and their thoughts on Logiealmond Primary School as part of the community, some of the comments are as follows:

^[1] The Housing Land Audit is compiled by PKC Planning on an annual basis, it estimates build out rates for sites over 5 houses across Perth and Kinross.

- *Primary school is at the heart of our community – and well supported by local residents as well as parents. Our community needs focal points like the school to help to continue the great community feel and include our younger members of society to feel part of that.*
- *Logiealmond is exceptional, community beetledrives, plant sales, Christmas shows – they all attract all the local community. It forms the heart of a rural society. To remove the school is to damage Scottish rural community.*
- *Logiealmond is the lynchpin of this community. We would not know each other without it. In this area your closest neighbours can be miles away. We have a profound sense of community here and it is almost entirely due to the school and the connections it enables.*
- *Logiealmond P.S. is the heart of an already fragile, rural, local community. The pupils who attend here are the most polite, well mannered, bright children you could ever hope to meet. The school is the focal point, hosting many a coffee morning and flower sale.*

The community are invited into the school for events such as plant sales, coffee mornings and end of term celebrations. Family and friends are invited to attend these events. The school also hosts an Open Day when all members of the local community are invited.

The school handbook indicates links with Glenalmond College using both their indoor and outdoor facilities.

The last let booked at Logiealmond Primary School was in April 2016. This does not mean that the school is not used by the community. Use of the school is normally agreed with the Headteacher and most events take place during school operating hours. An example of this is the stay and play that takes place every Tuesday.

Most community events take place within Chapelhill Hall which is approximately 1 mile from the school. In addition, the Chapelhill Inn is also located a short distance from the hall.

Methven

At the pre-consultation the community were asked to describe the community within Methven and their thoughts on Methven Primary School as part of the community, some of the comments are as follows:

- *School is a hugely important part of the community. It's where children and their parents can meet people/make friends. "Heart of the community"*
- *I think Methven is quite a close community and the school plays a big part in that. People who perhaps otherwise would not engage in events in the community, do so when they have a link to the school (relative, neighbour etc).*
- *I live in one of the outer catchment areas for Methven PS so feel that I only really come to Methven for school. So very important.*
- *Methven school is a big part of the community – it can share resources with the community and vice versa. Nice sized classes, good opportunity for 1-1 with teaching staff, picking up problems quickly.*

The school pupils invite the community into the school, are involved in local events and develop events for the school and community together. The school handbook indicates community engagement through school participation in tree planting, planning of the local park, the Gala Day and visits to places in the locality. Social events at the school are always well supported. The school participate in local events and welcome visits from local organisations and individuals.

The school has long standing ties with Methven and Logiealmond Parish Church. The school join the local community for school activities such as the Christmas Service.

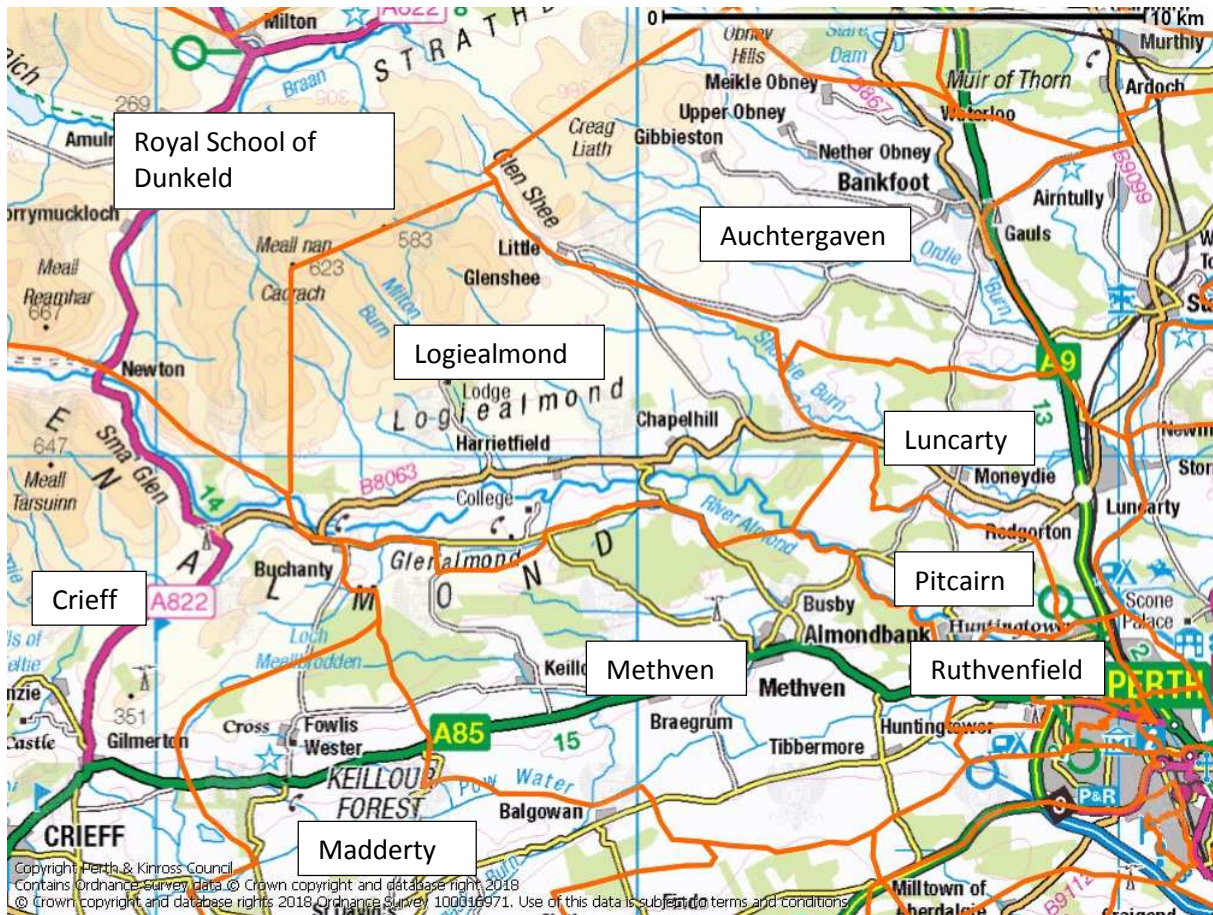
The local area is used as a natural extension of the school grounds with visits to the park and local woods. They also participate in wider community events and opportunities like swimming at Perth Leisure Pool and sporting leagues and events.

There are currently regular lets of the school buildings for Community Council meetings and Beavers.

4.8 School Catchment

The catchment area for Logiealmond Primary School adjoins Auchtergaven Primary School, Royal School of Dunkeld Primary School, Crieff Primary School, Methven Primary School, Pitcairn Primary School and Luncarty Primary School.

The catchment area for Methven Primary School adjoins Logiealmond Primary School, Crieff Primary School, Madderty Primary School, Community School of Auchterarder Primary School, Viewlands Primary School, Oakbank Primary School, Letham Primary School, Ruthvenfield Primary School and Pitcairn Primary School.



5. Pupil Numbers

5.1 Logiealmond Primary School

Pupil Rolls – Previous and Current Years (based on school census²)

	2010	2011	2012	2013	2014	2015	2016	2017
Logiealmond Primary School Capacity	48	48	48	48	48	48	48	48
Logiealmond Primary School Roll	9	14	12	13	8	12	14	14

Table 3: Logiealmond Primary School – pupil rolls previous and current years

At census 2016 there were 17 primary age pupils living within the Logiealmond Primary School catchment area attending Perth and Kinross schools. Four pupils attended other Perth and Kinross primary schools. One pupil attended Logiealmond who lived outwith the catchment area.

At census 2017 there were 19 primary age pupils living within the Logiealmond Primary School catchment area attending Perth and Kinross schools. There were no

² An annual census in publicly funded schools in Scotland is carried out every year for publication by the Scottish Government. This usually takes place in September.

pupils attending the school from out with the catchment area. Five pupils attended other Perth and Kinross schools i.e. not Logiealmond Primary School.

5.2 Methven Primary School

Pupil Rolls – Previous and Current Years (based on school census)

	2010	2011	2012	2013	2014	2015	2016	2017
Methven Primary School Capacity	229	229	229	229	229	229	229	229
Methven Primary School Roll	110	119	108	111	117	120	114	118

Table 4: Methven Primary School – pupil rolls previous and current years

At census 2016 there were 123 primary age pupils living within the Methven Primary School catchment area attending Perth and Kinross schools. Nineteen pupils attended Methven Primary School from outwith the catchment area. Twenty eight pupils attended other Perth and Kinross schools i.e not Methven Primary School.

At census 2017 there were 127 primary age pupils living within the Methven Primary School catchment area attending Perth and Kinross schools. There were 30 primary age pupils who attended other schools in Perth and Kinross. Twenty one pupils attended Methven Primary School from outwith the catchment area.

5.3 Future Pupil Projections

The methodology used for pupil projections allows Education and Children’s Services to project a detailed year by year analysis for each school catchment.

The methodology applied for projecting future P1 intakes uses aggregated GP registration data. The anonymized data, sourced from the NHS reflects children registered with a GP, within specific school catchments areas.

P1 pupils included within the data received from the NHS do not always decide to attend their catchment school. This is primarily because parents make placing requests to other schools or elect to send their child to a denominational school.

As a result of these movements the P1 data is adjusted taking into consideration the movement of pupils in previous years. The adjusted data is the primary source of information for forward planning.

It should be noted that due to the fluid nature of pupil movements within the estate, for a number of different reasons, predicting future years’ schools rolls will not be exact. It is however accurate enough to provide valuable information on forward planning for the school estate.

5.4 School Roll – Future Pupil Numbers Projected – Logiealmond Primary School

The table below shows the projected pupil roll for Logiealmond Primary School:

	2018	2019	2020	2021
Logiealmond Primary School Capacity	48	48	48	48
Logiealmond Primary School Roll	10	11	10	9

Table 5³: Logiealmond Primary School - Future projected school rolls

It can be seen from table 5 that the roll is not projected to increase in future years, based on current trends. NHS data indicates that there are 17 pre-school aged children living in the area, however it is likely that only 5 will attend the school over the next four years. Many of these children will be unlikely to attend other Perth and Kinross Council schools as there is some evidence that some children in the area attend private schools.

5.5 School Roll – Future Pupil Numbers Projected – Methven Primary School

The table below shows the projected pupil roll for Methven Primary School:

	2018	2019	2020	2021
Methven Primary School Capacity	229	229	229	229
Methven Primary School Roll	118	121	126	125
Potential pupils from house building	0	3	3	3
Methven Primary School Roll with house building	118	124	132	134

Table 6⁴: Methven Primary School – Future projected school rolls

5.6 Nursery Pupils

There is no nursery provision at Logiealmond Primary School.

Methven Primary School has nursery provision which offers both morning and afternoon sessions. Each session provides for a maximum of 30 children from aged 2 until they are of an age to attend primary school ie 60 places. There is to be no more than 10 children aged 2 in each nursery session. There are 26 children (Census 2017) attending Methven Primary School nursery.

³ The projected school roll is based on actual P1 registrations as at 23 February 2018. Data provided by the NHS indicated 2 P1 pupils were likely to start at the school in August 2018. Currently there is 1 pupil registered to start at the school in August 2018.

⁴ The projected school roll is based on actual P1 registrations as at 23 February 2018. Data provided by the NHS indicated 14 P1 pupils were likely to start at the school in August 2018. Currently there are 14 pupils registered to start in P1. There is 1 pupil who has made a placing request from out with the Methven Primary School catchment area to start at the school in August 2018.

6. Building and Finance Information

6.1 Ownership

The Council does not own Logiealmond Primary School. The land and school buildings (not including the school house) are leased from Mansfield Estates.

The Council owns the school site and buildings at Methven Primary School.

6.2 Suitability

Suitability is an assessment of the school as a whole, its buildings and its grounds and the impact these have on learning and teaching, leisure and social activities and the health and wellbeing of all users.

Schools are rated on a scale of A to D for suitability. Logiealmond Primary School and Methven Primary School are rated 'A' for suitability. The definition of this rating is 'Good - performing well and operating efficiently'.

6.3 Condition

Property condition is graded relative to the nature, construction and age of individual buildings and does not necessarily reflect their condition in comparative terms to a modern new building constructed to current standards and level of performance or sustainability. Schools are rated on a scale of A to D for condition.

Logiealmond Primary School

A condition survey was carried out by Perth and Kinross Council at Logiealmond Primary School on 19 January 2017. The school has an overall condition rating of 'C' (Poor – showing major defects and/or not operating adequately).

The overall condition of the main school building is 'B' (Satisfactory – performing adequately but showing minor deterioration) however the overall site grade has been downgraded because of the condition of the dining block, which is classed 'C'.

A further 'desktop' Mechanical and Electrical (M&E) survey was undertaken in November 2017. The current condition rating has not been adjusted to take M&E into account, as the Council along with other Scottish Councils is about to update the method of assessing condition. The works required as a result of the M&E survey have been included in the potential future spend, however. These works include lighting, heating, ventilation, wiring and building fabric repairs.

Planned and unplanned maintenance on Logiealmond Primary School building in the last 3 financial years has cost £27,205.

Methven Primary School

A condition survey has been carried out by Perth and Kinross Council on 8 March 2017. The condition rating is 'C' (Poor – showing major defects and/or not operating adequately).

A further 'desktop' Mechanical and Electrical (M&E) survey was undertaken in November 2017. The current condition rating has not been adjusted to take M&E into

account, as the Council along with other Scottish Councils is about to update the method of assessing condition. The works required as a result of the M&E survey have been included in the potential future spend, however. These works include lighting, heating, ventilation, wiring and building fabric repairs.

Planned and unplanned maintenance on Methven Primary School building in the last 3 financial years has cost £101,525.

6.4 Life Expired Buildings

Methven Primary School has 2 buildings that are classed as life expired, which contributes to the school being graded as condition 'C'. A life expired building is defined as a building which is uneconomic to maintain. The life expired building which accommodated the previous private nursery was demolished in October/November 2017.

An exercise has been undertaken to look at the remaining life expired buildings on the site. These are the kitchen/dining centre and the annexe building.

Feasibility studies have been carried out with a number of options proposed for the replacement of these buildings which would remove the life expired buildings from the site and improve the overall condition. Proposed work will consist of providing a new hall and kitchen/dining facility, which is likely to consist of a stand-alone building within the site. It is still to be determined, through design development, whether the new gym/dining hall will comprise of one space to accommodate both gym and dining or 2 separate spaces. It is proposed the annexe building will be demolished and the car park/drop off area will be enlarged to provide an improved minibus drop off area.

Should the annexe building be demolished, the approved capacity of the school would be reduced to 176 primary pupils, subject to Committee approval. The annex building currently incorporates 2 classroom spaces that are included as part of the official capacity of 229. Pupil projections identify these classrooms are not required to accommodate projected future rolls.

In summary, following the conclusion of these works the general condition of the school will be improved and the introduction of a new hall and dining facilities will provide pupils and staff with access to better social spaces and an improved learning and teaching environment.

With the annexe building being demolished parents, carers and the wider community will benefit from improved access to the school site with the car park/drop off area being enlarged.

6.5 Financial Information (Staff, Buildings, Transport and Other)

The revenue (or running) cost for financial year 2017/2018 for operating Logiealmond Primary School is £137,187.

The revenue (or running) cost for financial year 2017/2018 for operating Methven Primary School is £563,721.

The approximate indicative costs of upgrading the condition of the buildings and associated works are detailed below.

Works to be undertaken	Cost of Upgrades
Improve condition rating including M&E – Logiealmond Primary School	£284,198
Replace dining centre at Logiealmond Primary School	£165,000
Improve condition rating including M&E – Methven Primary School	£794,435
Life Expired Buildings – Methven Primary School	£1,631,161

Table 7: Proposed cost of works at Logiealmond Primary School and Methven Primary School

7. Options for Consideration – Logiealmond Primary School and Methven Primary School

A number of options are considered for the future of Logiealmond Primary School and Methven Primary School as part of the options appraisal:

- Option 1 - Catchment areas of the schools are reviewed to determine whether this would increase the occupancy at both schools and ensure their future sustainability. If sustainable, refurbish Logiealmond Primary School and Methven Primary School to improve condition at both schools.
- Option 2 - Logiealmond Primary School remains open - refurbish the school to improve condition. Reduce capacity of Methven Primary School through a review of accommodation – including refurbishment of the school to improve condition.
- Option 3 - Mothball Logiealmond Primary School and move pupils to Methven Primary School – refurbish Methven Primary School to improve condition.
- Option 4 - Consider closing Logiealmond Primary School and move pupils to Methven Primary School. Refurbish Methven Primary School to improve condition. Capacity at Methven Primary School reduced following refurbishment.

In considering the options below, account was taken of the fact that there is a presumption against closure of a rural school. As part of the options appraisal, the “rural school factors” specified in the School Consultation (Scotland) Act 2010 have been given special regard. These are:

- Effect on Community
- Effect on Travel Arrangements
- Educational Benefit

7.1 Option 1 - Catchment areas of the schools are reviewed to determine whether this would increase the occupancy at both schools and ensure their future sustainability. If sustainable, refurbish Logiealmond Primary School and Methven Primary School to improve condition at both schools

A catchment review can in principle be a reasonable option in some cases, to increase the sustainability of a school. An in-depth analysis in each case is required to ascertain if a sustainable increase in school roll could be achieved and a detrimental impact on neighbouring schools is not created as a result.

It should be noted that in 2012, a change to the catchment area for Logiealmond Primary School was considered. A Statutory Consultation took place following representations made by the Parent Council at Logiealmond School.

The Parent Council requested that the catchment area for Logiealmond Primary School be extended to include the whole site of Glenalmond College, on the basis that staff employed by the College could be expected to move accommodation from time to time.

For those staff with children this presented some uncertainty in relation to the school their children would attend, and transport arrangements. The proposal at that time was to subsume the delineated area of the Glenalmond College site into the catchment of Logiealmond Primary School with a corresponding reduction in the catchment area for Methven Primary School.

There was limited response to the consultation, and the responses received were mixed, largely because almost half of the houses within the affected area were privately owned and unconnected with Glenalmond College.

Ultimately, the recommendation of the report ([Report 12/316 refers](#)) was that it was not “appropriate to consider amending the catchment area when the school roll has not been sustained at the level of pupils who were in attendance in August 2011”. In effect, the recommendation reflected a conclusion that there was no evidence to suggest that altering the catchment area to include the Glenalmond site would have improved pupil numbers at the school.

Community Impact

There was a mixed response to this option from individuals attending the community drop-in session and responding to the on-line questionnaire.

Comments received on this option from those attending the drop-in sessions at both schools included;

- *It is all fine and well to review catchment areas but this will only work if the areas are populated!*
- *Not sure this would improve numbers at either school and would involve a reasonable financial input, money which could be spent on dining hall. Methven & Madderty would be an exciting option.*
- *Could be possibly short sighted but would depend on future building plans whether this option is sustainable.*

- *Why put kids from other areas, to schools out of their catchment area. If children went to own catchment area, then NO school would need to Close.*
- *From a business point of view, this may not be sustainable and could be a further drain on resource.*
- *Both schools to remain, both areas to see increased uptake through new build. School in our village communities are essential to rural life. Go save money elsewhere.*
- *I believe there is a place for both schools as they provide different experiences. Small hamlets like Logiealmond shouldn't suffer and lose a community focal point just to save money. The Council has a duty of care to ensure more rural communities remain viable. However parents living nearby need to make use of their local school rather than going to Methven. Methven population is surely likely to grow as there is land banked by house developers which is bound to get built on in the next 20 years.*

Pupil Numbers/Travel Arrangements

Appendix 3 details potential options for catchment changes to Logiealmond Primary School. It provides an overview of the impact on pupil numbers which may occur if the existing catchment boundaries for the schools were to change. It also considers travel arrangements for those pupils.

The areas were chosen because they share a boundary with both schools catchments. The adjoining catchment areas are detailed in appendices 2a-2c.

The following table summarises the catchment analysis for Logiealmond Primary School:

Catchment Area Proposed	Other School catchment impacted	Summary
Moving existing Logiealmond Primary School catchment boundary into Auchtergaven Primary School catchment.	Auchtergaven Primary School	<p>Moving this single boundary would not be sufficient to make Logiealmond Primary School sustainable due to low numbers of pupils.</p> <p>In addition, transport distances are greater for those pupils therefore will be detrimental in terms of pupil travelling time.</p>
Moving existing Logiealmond Primary School catchment boundary into Royal School of Dunkeld Primary School catchment.	Royal School of Dunkeld Primary School	<p>Moving this single boundary would not be sufficient to make Logiealmond Primary School sustainable due to low numbers of potential pupils.</p> <p>In addition, transport distances are greater for pupils travelling to Logiealmond Primary School therefore will be detrimental in terms of pupil travel time.</p>
Moving existing Logiealmond Primary School catchment boundary south into the Methven Primary School catchment area.	Methven Primary School	<p>Moving this single boundary would not be sufficient to make Logiealmond Primary School sustainable due to low numbers of potential pupils.</p> <p>The travel distance and time is reduced for approximately 2 pupils with this option. It would be detrimental for the rest due to an increase in travel distance and time.</p>

Table 8: Catchment analysis for Logiealmond Primary School

This table summarises the catchment analysis for Methven Primary School;

Moving existing Methven Primary School catchment boundary east into Pitcairn Primary School catchment and/or Ruthvenfield Primary School catchment area.	Pitcairn Primary School and Ruthvenfield Primary School	Moving the boundary to the east into Pitcairn and/or Ruthvenfield Primary School catchments would result in too many pupils attending Methven Primary School, breaching capacity and making Pitcairn and Ruthvenfield Primary School rolls unsustainable and increasing travel distance and time for the majority of pupils.
Moving existing Methven Primary School catchment boundary north into Logiealmond Primary School catchment area.	Logiealmond Primary School	Moving the boundary to the north into Logiealmond Primary School catchment area would not increase the Methven Primary School roll significantly.
Moving existing Methven Primary school catchment boundary south east into Viewlands/Oakbank Primary School(s) catchment area.	Viewlands Primary School/Oakbank Primary School	Moving the boundary to the south east into Oakbank/Viewlands Primary School catchment would not increase the school roll significantly with very few pupils living to the west of the A9.
Moving the existing Methven Primary School catchment boundary south into Community School of Auchterarder Primary School catchment area.	Community School of Auchterarder Primary School	Moving the boundary to the south into the Community School of Auchterarder Primary School catchment area would not increase the school roll significantly as this area, around Findo Gask, is sparsely populated.
Moving the existing Methven Primary School catchment boundary west into Madderty Primary School catchment area.	Madderty Primary School	Moving the boundary to the west into the Madderty Primary School catchment would not increase the school roll significantly. This area is rural and sparsely populated.

Table 9: Catchment analysis for Methven Primary School

Option 1 - Assessment

This option considers increasing the catchment area Logiealmond Primary School and Methven Primary School to make both school rolls sustainable.

Logiealmond

If the catchment area for Logiealmond Primary School was reviewed to include all the areas detailed in table 8 there may be a maximum of an additional 26 primary school age pupils that could attend Logiealmond Primary School.

It is likely that the majority of current primary school pupils would continue to attend their current school, so in the short term there would be little benefit to the roll at Logiealmond Primary School.

If all new P1's from the combined adjusted catchment areas detailed attended Logiealmond Primary School, this would equate to between 9 and 15 pupils in the next 4 years. The majority of these potential pupils would have a longer distance and journey time to get to school than they do currently

In addition, based on past trends not all P1's in the area attend the school.

In conclusion it is unlikely that altering the catchment area using any of the combinations outlined would lead to a sustainable school roll for Logiealmond Primary School. Also other neighbouring rural schools and pupils would experience adverse consequences through a catchment review.

Methven

It is unlikely that increasing the catchment area in a number of directions will create a sustainable increase in roll for Methven Primary School. This is due mainly to areas close to Methven being sparsely populated. Widening the catchment areas further would result in large numbers of children being moved from other schools, meaning Methven Primary School was oversubscribed and that the other schools become unsustainable. Furthermore, these changes would likely be detrimental to those children as a result of increased travel distances.

7.2 Option 2 - Logiealmond Primary School remains open - refurbish the school to improve condition. Reduce capacity of Methven Primary School through a review of accommodation – including refurbishment of the school to improve condition.

Community Impact

This option was well received by both communities. Comments received on this option from those attending the drop-in sessions at both schools included:

- *“Definitely keep it open! The results of closure on Scottish rural communities have long lasting impact! Think of Beeching’s closure of the railways. Our country has been known for its educational excellence in the past. All pupils do better in smaller groups – the Government is committed to narrowing the attainment gap – small units must be a part of this.”*

- *“This is the most community orientated option. Both communities deserve a good school. Logiealmond/Harrietfield/Glenalmond/Little Glenshee only come together in this building. It provides an excellent education and benefits the children being taught in one class. The children are more considerate of younger pupils/friendly/caring.”*
- *“I feel the closure of Logiealmond Primary School would have a massive impact on my child's well-being, his academic attainment and the wider community in terms of its availability to meet the educational needs of local children and the focal point it offers for the community.”*
- *“This would be my preferred option as it's sensible to keep such young children in the local areas. Removing rooms from Methven could remove options for additional support rooms/sensory.”*
- *“This is a good option, although I have concerns that the front annex buildings may be way beyond economic repair. I agree with reduced capacity, build new hall and keep Logiealmond open. Preferred.”*

Condition

In order to improve the condition rating at Logiealmond Primary School the dining block would need to be refurbished or replaced.

The option detailed in section 6.3 and 6.4 for Methven Primary School is deemed to be the most appropriate action to take to improve the condition rating at the school.

The hall and kitchen/dining building at Methven Primary School, which are life expired, are likely to be replaced by a stand-alone building. It is still to be determined, through design development, whether the new gym/dining hall will comprise of one space to accommodate both gym and dining or 2 separate spaces. It is proposed the annexe building (hall) will be demolished and the car park/drop off area will be enlarged to provide an improved minibus drop off area. The existing learning and teaching spaces would also be improved with the proposed works.

Pupil Numbers/Impact

As detailed in tables 5 and 6 (section 5.4 and 5.5) the school roll at Methven Primary School is projected to increase slightly in future years, assuming house building takes place. The roll at Logiealmond Primary School is projected to decrease slightly in future years.

Demolishing the annexe building at Methven Primary School would reduce the approved capacity of the school to 176. This is due to the annexe building currently incorporating 2 classroom spaces that are included as part of the official capacity of 229. Future pupil projections detailed in section 5.5 identify these classrooms are not required to accommodate future rolls.

Progressing with this option would reduce the approved capacity of Methven Primary School to 176, subject to Committee approval.

A new dining/gym hall will benefit the children at Methven Primary School. Depending on the final design scheme, works may also present an opportunity to improve vehicular movement, parking and drop off issues that have been raised to the front of the school site. This may also have a positive impact on the wider

community with the opportunity to improve vehicle movements in and around the school during school hours

If the dining block building at Logiealmond Primary School is refurbished or replaced, this would benefit the children attending the school.

Financial Impact

Capital funding of £284,198 is required to improve the condition of Logiealmond Primary School.

The revenue (or running) cost of £137,187 for Logiealmond Primary School for the financial year would remain the same.

The indicative capital cost to replace the dining/gym hall at Methven Primary School would be approximately £1,631,161. The amount of £794,435 identified to improve the condition and M&E items would be required. However, the majority of these works will take place beyond 2023, as imminent works will be addressed through the replacement of the life expired buildings.

The revenue (or running) cost of £563,721 for Methven Primary School is likely to reduce due to a smaller gross internal footprint of the school site and removal of buildings which are uneconomic to maintain.

Travel Arrangements/Environmental Impact

The existing travel arrangements for both schools would be unaffected. If this option progressed the environmental impact would be reduced with the removal of buildings that are uneconomic to maintain.

Option 2 - Assessment

Pupils at both Methven Primary School and Logiealmond Primary School would benefit from improving the condition of the schools. There would be a better dining environment at both schools with PE facilities being improved at Methven Primary School.

This option is reasonable for Methven Primary School as it addresses condition and to a degree under occupancy. It is not considered reasonable for Logiealmond Primary School as it does not make proposals which will create a sustainable school roll. It is therefore not considered reasonable to progress with this option.

7.3 Option 3 - Mothball Logiealmond Primary School and move pupils to Methven Primary School – refurbish Methven Primary School to improve condition.

The term 'mothballing' is used, according to Scottish Government guidance, to refer to a temporary decision to close a school where the roll has fallen to zero. It recognises the permanent impact on a community of closing the school and seeks to avoid that final decision until there is sustained evidence of no demand. It can be an appropriate and positive step where there is some prospect of revival in a community. All parents must agree to a school being mothballed.

The Statutory Guidance for the Schools (Consultation) (Scotland) Act 2010, in relation to mothballing, states “the maximum length of its duration is likely to depend on the location of the school and the desirability of maintaining capacity to re-open a school there, but it is unlikely that it should exceed 3 years in areas that are not very remote.”

Community Impact

The Logiealmond community were strongly against this option. There was a mixed response from the Methven community. Comments received on this option from those attending the drop-in sessions at both schools included:

- *“There is no acceptable justification for mothballing a sector leading school because it does not meet available ‘max roll’ figures. It is flourishing and serving the local community to the highest standards.”*
- *“Children would have to travel a lot further if Logiealmond was to be mothballed. It would also leave a sad community to see it go!”*
- *“Concerned mothballing simply means closure at a later date since the pupils have moved and the culture/appetite for reopening has moved on.”*
- *“Closure by any other name. A drawn out process which would leave to much uncertainty for the whole community.”*
- *“Refurbish Methven and close Logiealmond as it is so small the costs are very high per capita.”*
- *“Wouldn’t Logiealmond pupils benefit from attending Methven? Larger school, more friends, less daunting when moving to secondary.”*
- *“Unfair to local pupils and parents to mothball or close Logiealmond.”*
- *“Many children from logiealmond/harriotfield field in the past and now, come to methven already. And with constant building work (new houses) going on in Methven and surrounding areas, it seems inevitable that we will take in more children.”*
- *“Any refurbishment to Methven School would be a great benefit to the future of the school and we would fully support.”*

Pupil Impact/Pupil Roll

Pupils from Logiealmond Primary School catchment area would attend Methven Primary School unless they are successful with a placing request to another school.

If Logiealmond Primary School was mothballed and all existing Logiealmond Primary School pupils attended Methven Primary School including projected pupils from house building the roll at Methven Primary School would be as shown in table 10 in option 4.

In the circumstances detailed in table 10 the revised capacity of 176, following works to improve condition at Methven Primary School, could accommodate projected future rolls for both schools.

Travel Arrangements/Environmental Impact

All existing pupils currently attending Logiealmond Primary School would be transported to Methven Primary School by the Council.

There would be an impact on Logiealmond Primary School pupils in terms of the time and distance taken to travel to school. The additional journey time for the pupil who is impacted most in terms of travel would be approximately 8 minutes. They would have approximately 4 additional miles further to travel, bringing the total miles to travel to approximately 5.4 miles.

It is not uncommon for pupils who live in other rural areas of Perth and Kinross to travel further distances than this on more minor roads to reach their school.

Pupils from Logiealmond Primary School would no longer need to travel to Ruthvenfield Primary School, which has a journey time of approximately 13 minutes over a distance of approximately 7.4 miles, for PE as there are PE facilities at Methven Primary School.

There would be an environmental impact as a result of the additional transport required but this would be offset by Logiealmond Primary School being mothballed.

Financial Impact

There would be a revenue saving of £103,598 if Logiealmond Primary School was mothballed. The capital cost of £284,198 as well as any additional cost identified to improve the condition rating of the school would not be required while the school was mothballed.

A capital cost of £1,631,161 would be required to replace the gym/dining hall at Methven. In addition the sum of £794,435 to improve M&E items would be required at Methven Primary School which would benefit both sets of pupils. Timescales are 2023 onwards for the majority of the M&E items.

Option 3 – Assessment

This option considers mothballing Logiealmond Primary School.

This option is not supported by the Logiealmond community and there is a mixed response to this option from the Methven community.

There would be additional travel time and distance for Logiealmond Primary School pupils travelling to Methven Primary School, however the environmental impact is limited as pupils currently travel. The mothballing of the school would be beneficial to the environment.

This option would require a capital sum of £1,631,161 to replace the gym/dining hall building at Methven Primary School and improve the condition rating at Methven Primary School. There would be revenue savings of £103,598 with the mothballing. The capital cost of £284,198 to improve the condition of the school at Logiealmond Primary School would not be required whilst the school is mothballed.

Taking account of the Statutory Guidance, mothballing of the school is only a reasonable option if there are likely to be significant changes in the next 2-3 years which would result in an increase in the roll.

It is unlikely that significant house building will take place in the area over the next 2-3 years due to the requirement to upgrade the private water supply. However, any future house building would also be limited to small scale development due to planning policy. Therefore, future pupil numbers, based on the number of pre-school children living in the area and past trends, indicate continuing low pupil numbers.

The assessment is therefore that there are no significant developments which are likely to impact positively on the size of the pupil population in the next 2-3 years, therefore, mothballing Logiealmond Primary School is not a reasonable option to consider.

7.4 Option 4 – Consider closing Logiealmond Primary School and move pupils to Methven Primary School. Refurbish Methven Primary School to improve condition. Capacity at Methven Primary School reduced following refurbishment.

At the community drop-in sessions for Logiealmond Primary School and Methven Primary School there were 5 options proposed for the future of both schools.

Option 4 and Option 5 were as follows;

Option 4 - Reduce capacity of Methven Primary School through a review of accommodation – including refurbishment of the school to improve condition. Consider closing Logiealmond Primary School and move pupils to Methven Primary School.

Option 5 - Consider closing Logiealmond Primary School and move pupils to Methven Primary School – refurbish Methven Primary School to improve condition.

The only difference between the two options was that option 4 sought to reduce the capacity at Methven Primary School.

The feedback received along with the impact and assessment for each option are broadly similar therefore for the purposes for this options appraisal they have been combined into one option.

Community Impact

The Logiealmond community were strongly against both options as they do not want to see their school closed.

The Methven community were largely in favour as it would support the sustainability of their school roll and improvements would be made to the condition of the school.

At the Logiealmond Primary School community drop-in session the wider community described some of the challenges of living in a rural community. They made a link

between the lack of suitable and affordable housing available to young families and the school roll.

The number of pupils due to attend the school each year, over the last 7 years, has remained constant but it would appear that families are more mobile and exercise their right to choose other schools as the number of children attending their catchment school remains low. This is therefore evidence that people living in the area are willing to travel to access services including education and that this has not deterred families from living in the area.

In 2017, the Council closed schools in Calvine (Struan Primary School) and Enochdhu (Straloch Primary School) after they had been mothballed for 5 years. In common with Logiealmond, residents in those communities were used to travelling to access most facilities and services, such as shops, leisure and health services. The evidence from both Calvine and Enochdhu is that families were not deterred from moving into the area by having to travel to a neighbouring village to attend school. There does not appear to be evidence to link closure of a school with a decline in the population. In addition, there are a number of factors which will support the resilience of the community surrounding Logiealmond Primary School. Methven Primary School is only approximately 4.4 miles from Logiealmond Primary School.

As stated above, the evidence suggests that this distance is unlikely to deter families from settling in the community. There are employers in the area, such as Glenalmond College, which will continue to attract people wishing to move into the area. The community is within reasonable travelling distance of major road networks and larger settlements with employment, business and leisure opportunities. In the case of Logiealmond, where the school itself is not located within a settlement, it is more likely that it is the individuals within the community who will create the opportunities to link with each other and promote a community ethos.

Community facilities in Chapelhill will continue to provide a focus for events which bring the individuals within the community together.

The closure of Logiealmond Primary School would therefore have limited impact on the wider community. Moving the pupils to Methven Primary School would also enable individuals from Logiealmond and its surrounding communities to integrate with the community in and around Methven, enhancing both communities.

Comments received from those attending the drop-in sessions at both schools included;

- *“No Way! I would NOT want to go to Methven every morning”.*
- *“Compare the quality of education provided by the two institutions – to close Logiealmond would work against the needs and interest of good education”. Logiealmond is the local community. To close it is to deny rural society.*
- *“Squeezing more pupils into Methven would benefit no-one. Our community would lose the central social focus it has and our children would suffer, longer term this option would lead to rural depopulation”.*
- *“If possible, it would be best to keep both schools open”.*

- *“I can see the thought process behind this option but I feel it is unfair to force parents to have to put their children to a school which they did not choose”.*
- *“Not an option. I would remove my child from the system and home educate rather than risk winter travelling etc”*
- *“Not the most creative solution. May seem like an easy option but quick fixes often have long term unforeseen consequences. Keep our excellent small local school – appreciate it’s worth”*
- *“Really wouldn’t like this option to go ahead. I feel we would be losing a very loved and vital part of our community”*
- *“A very poor choice indeed. Are any of these decisions based on the quality of education provided for the individual child?”*
- *“Close the school if necessary, but make sure there are adequate facilities in place for the increasing school aged populations”*
- *“Refurbishment needed but closing Logiealmond might have negative effect to local community and needs to be looked at.”*
- *“Logiealmond only has around 8 students. I don’t feel this is viable cost wise to remain open, this is a shame because it is a good school and the children are happy, however it boils down to cost. If the children were moved to a larger school they would mingle with a variety of different children and hopefully have more opportunities.”*
- *“Tiny school at Logiealmond and will give opportunities for pupils at both schools. Kindergarten and school gym hall building have huge potential and would be great to see the facilities improved for all.”*
- *“As we live in Harrietfield we were actually in Logiealmond PS catchment and we visited both schools before deciding Methven was the better option for our kids. Mainly because of the low number of classmates and social interaction with friends they’d have at LPS. But also I found the school to be cramped and run down. Most of the pupils there are children of lecturers and staff from Gldnalmond College and I got the feeling it was being kept alive purely as a peek for the college staff, it’s even mentioned in their recruitment info. I don’t see how LPS can survive when larger schools than it have been closed. Let Glenalmond College buy it and run it as a Primary for their staff. Methven Primary is a great village school and a hub of our community. It is a friendly, welcoming school with values that are current and improvements have already been made since Mrs Speights arrival 2 years ago, including the addition of the invaluable nursery. The buildings on the grounds could do with refurbishment and renovation to put them to better use – in particular the former Kindergarten premises which has been due for demolition for 2 years but hasn’t happened. The dinner hall capacity could be dramatically increased by using this building of the former site. I think the closure of Logiealmond and the movement of the 7 or so pupils is the best option, as a budget increase for Methven would allow for improvements instead of throwing money at LPS to keep it wind and water tight. 7 pupils is neither here nor there to a school with 100+. I hope that the restructure will also be a good step forward to creating a Breakfast or After School club for MPS as it is very much needed. As a parent I would happily volunteer time to help with school refurbishment and I know many others who would pitch in too. Please use that resource”*

Pupil Numbers/Pupil Roll

If this option progresses the projected school roll at Methven Primary School is as detailed in table 10 below;

	2018/ 2019	2019/ 2020	2020/ 2021	2021/ 2022
Methven Primary School capacity (revised)	176	176	176	176
Methven Primary School Pupils	118	124	132	134
Logiealmond Primary School Pupils	10	11	10	9
Methven Primary School Roll	128	135	142	143
Methven Primary School Occupancy	73%	77%	81%	81%

Table 10: Methven Primary School roll – including Logiealmond Primary School pupils if school mothballed

The current class size maximums are as follows:

	Class size limit
Primary 1	25
Primary 2 – 3	30
Primary 4 – 7	33
Composite classes	25

Table 11: Class size maximums

Currently pupils at Logiealmond Primary School are taught in a single class which could have a maximum capacity of 25 pupils taking into consideration the classroom space available and number of pupils.

The largest class size at Methven Primary School is currently 24. The class size currently at Logiealmond Primary School is 14 (Census 2017). The maximum class size under this proposal that a pupil could expect at Methven Primary School would not materially change due to small numbers of pupils from Logiealmond Primary School.

Regardless of whether the capacity of Methven Primary School is reduced or not the school could accommodate pupils from Logiealmond Primary School.

Travel Arrangements/Environmental Impact

All existing and future pupils currently attending Logiealmond Primary School would be transported to Methven Primary School by the Council as they reside more than the statutory walking distance from school, or where transport is considered necessary on safety grounds.

There would be an impact on Logiealmond Primary School pupils in terms of the time and distance taken to travel to school. The additional journey time for the pupil who is impacted most in terms of travel would be approximately 8 minutes. They would have approximately 4 additional miles further to travel, bringing the total miles to travel to approximately 5.4 miles.

It is not uncommon for pupils who live in other rural areas of Perth and Kinross to travel further distances than this on more minor roads to reach their school.

Pupils from Logiealmond Primary School would no longer need to travel to Ruthvenfield Primary School for PE as there are PE facilities at Methven Primary School.

There would be little impact on the travel arrangements for staff. Staff in Perth and Kinross tend to travel throughout the area to work in schools. Many staff do not live within the catchment area of the school they work in.

There would be an environmental impact due to the increased travel time and distance for pupils, however pupil numbers are small and they are already transported to school. This would also be offset from a reduction in energy consumption if the school is to be closed.

Financial Impact

Revenue savings of £103,598 including mothball costs would be made if Logiealmond Primary School was to close. The capital cost of £284,198 as well as any additional cost identified to improve the condition rating of the school would not be required.

A capital cost of £1,631,161 would still be required at Methven Primary School to remove and replace the life expired buildings on site.

A cost of £794,435 would still be required at Methven Primary School to improve the condition and upgrade M&E items. Imminent condition works will be addressed through the replacement of life expired buildings.

Option 4 – Assessment

There was a mixed response from both communities regarding closing Logiealmond Primary School with most people not supportive of the option.

The roll at Logiealmond Primary School has not exceeded 14 since 2005. Future pupil numbers are projected to be a maximum of 11 within the next 4 years.

Projected P1 intake numbers are relatively low. In addition, historically, numbers of P1 pupils attending the school have been low in relation to numbers expected from data provided by the NHS. There is nothing to suggest that this pattern will change in the future. If this is the case it will not lead to a sustainable roll at Logiealmond Primary School.

The option would see the condition rating of Methven Primary School improved and the capacity reduced. The capacity would be reduced by demolishing one of the life expired buildings as detailed in section 6.4. The reduced capacity of 176 pupils can accommodate future pupils from both the Methven Primary School and Logiealmond Primary School catchment areas.

This option would lead to the closure of Logiealmond Primary School.

As a result there would be increased travel time and distance for Logiealmond Primary School pupils attending Methven Primary School. The furthest additional

distance a pupil would have to travel would be approximately 4 miles more with 8 minutes added to their existing journey time, bringing the total miles to travel to approximately 5.4 miles.

The closure of the school should have little or no impact on current travel arrangements for the community accessing facilities as the community require to travel to access other amenities. If the school was to close the community will continue to be able to access the local hall or inn for community gatherings/events.

It is considered that closure of Logiealmond Primary School and the reduction of capacity and refurbishment of Methven Primary School is a reasonable option. There is no indication that the roll will rise significantly at Logiealmond Primary School due to relatively low pupil numbers and a pattern of P1's not attending the school.

This option also has the benefit of supporting the sustainability of Methven Primary School which is also a rural school.

7.5 Community Proposals

The community put forward proposals at the drop-in sessions which have been assessed below. These proposals were:

- To provide a nursery in the school and reduce capacity;
- To bring dining provision into the school, reduce capacity and use the building more effectively

7.6 Community Proposal 1 - A nursery class is included within Logiealmond Primary School, the school remains open and capacity is reduced.

A number of those who attended the community drop-in session suggested that including a nursery within Logiealmond Primary School would increase pupil numbers in the school. Those attending the session felt by providing a nursery within the school would encourage parents to keep their children at the school to attend P1.

From the data provided by the NHS over the next four years there are 17 nursery aged children that could attend a school nursery as per section 4.4. Assuming the nursery is for 3 and 4 year olds, there would be 8 children in 2018/19 and 11 children in 2019/20.

Historically as evidenced in table 1, the majority of P1 aged pupils have been attending other schools. In the last 8 years, 13 P1 children attended out of 37 potential pupils. Very few of these children go to other Perth and Kinross Council schools. It is likely that those children are attending private schools. It is also the case that parents have a number of different options in securing pre-school care for their children. This includes other providers such as private nurseries and childminders. While it is possible that attending the local nursery may encourage some parents to continue their child's education at the school, it is unlikely that all children who would be eligible to attend a school nursery at Logiealmond would do so.

Not all schools have a nursery class but there is an established nursery provision at Methven Primary School. The provision at Methven Primary School offers both morning and afternoon sessions. Each session provides for a maximum of 30

children from aged 2 until they are of an age to attend primary school ie 60 places. There are 26 children (Census 2017) attending Methven Primary School nursery which is sufficient to sustain the roll.

In summary, the proposal to create a nursery class within Logiealmond Primary School will not sufficiently increase pupil numbers.

7.7 Community Proposal 2 – Demolish dining block building at Logiealmond Primary School and include dining facilities within the main school building.

As detailed in table 5 (section 5.4) the school roll at Logiealmond Primary School is projected to decrease slightly in future years.

There are currently 2 classroom spaces available within the main school building at Logiealmond Primary School, one room has a capacity of 23 pupils and the other a capacity of 25 pupils. Regardless of which room is used for dining there would be sufficient teaching space available to accommodate the future projected school roll.

This proposal would see the existing dining block building demolished with dining facilities included within the existing main school building. This option would require a feasibility study to be carried out to determine if this was possible and the associated costs.

If this proposal progressed the approved capacity of the school would be reduced to either 23 or 25 dependant on the room used for a servery kitchen.

This would reduce the overall school capacity due to the loss of learning and teaching space, however the building would be used more efficiently. This proposal does not address the issue of the school roll being low and the fact that children living in the area are not attending the school however, therefore it is not considered a reasonable proposal.

7.8 Overview of Options

The outcome of the high level options appraisal is summarised below:

Option	Option Description	Outcome
1	Catchment areas of the schools are reviewed to determine whether this would increase the occupancy at both schools and ensure their future sustainability. If sustainable, refurbish Logiealmond Primary School and Methven Primary School to improve condition at both schools	Rejected. Not a reasonable option due to not being able to create a catchment which will sustain the roll at Logiealmond Primary School without impacting on other schools and the travel arrangements of pupils from those schools. It has not been possible to expand the catchment of Methven Primary School to increase the school roll significantly.
2	Logiealmond Primary School remains open - refurbish the school to improve condition. Reduce capacity of Methven	Rejected. Not a reasonable option. No prospect of a sustainable roll in the school due to small numbers of pre-school children and primary

	Primary School through a review of accommodation – including refurbishment of the school to improve condition.	aged children living in the catchment area. Also not all potential pupils in the area attend the school.
3	Mothball Logiealmond Primary School and move pupils to Methven Primary School. Refurbish Methven Primary School to improve condition.	Rejected. Not a reasonable option. No prospect of a sustainable roll in Logiealmond Primary School in the next 2-3 years due to small numbers of pre-school children and primary aged children living in the catchment area. Also not all potential pupils in the catchment attend the school.
4	Consider closing Logiealmond Primary School and move pupils to Methven Primary School. Refurbish Methven Primary School to improve condition. Capacity at Methven Primary School reduced following refurbishment.	Accepted as a reasonable option for the following reasons; <ul style="list-style-type: none"> • Educational benefits for pupils at Methven Primary School and Logiealmond Primary School including early years provision and seamless transition to Primary 1 for both sets of pupils. • There is no indication there will be a significant increase in the roll at Logiealmond Primary School. • Condition rating improved and the removal of life expired buildings at Methven Primary School.

The outcome of the options appraisal recommends **Option 4 - Consider closing Logiealmond Primary School and move pupils to Methven Primary School. Refurbish Methven Primary School to improve condition. Capacity at Methven Primary School reduced following refurbishment.**

8 Detailed Analysis of Reasonable Option:

This section provides a more detailed assessment of the option which is considered reasonable in the circumstances. It considers the “rural school factors” of community impact and impact on travel arrangements, as well as including an Educational Benefits Statement.

This is considered a reasonable option because the school roll of Logiealmond Primary School has been low over a number of years due to low numbers of children living in the area but also due to pupils not attending their catchment school.

8.1 Community Impact

Community Impact – Loss of the school

The Logiealmond community were strongly against this option as they do not want to see their school closed.

The Methven community were largely in favour as it would support the sustainability of their school roll and improvements would be made to the condition of the school.

At the Logiealmond Primary School community drop-in session the wider community described some of the challenges of living in a rural community. They made a link between the lack of suitable and affordable housing available to young families and the school roll.

The number of pupils due to attend the school each year, over the last 7 years, has remained constant but it would appear that families are more mobile and exercise their right to choose other schools as the number of children attending their catchment school remains low. This is therefore evidence that people living in the area are willing to travel to access services including education and that this has not deterred families from living in the area.

In 2017, the Council closed schools in Calvine (Struan Primary School) and Enochdu (Straloch Primary School) after they had been mothballed for 5 years. In common with Logiealmond, residents in those communities were used to travelling to access most facilities and services, such as shops, leisure and health services. The evidence from both Calvine and Enochdu is that families were not deterred from moving into the area by having to travel to a neighbouring village to attend school. There does not appear to be evidence to link closure of a school with a decline in the population. In addition, there are a number of factors which will support the resilience of the community surrounding Logiealmond Primary School. Methven Primary School is only approximately 4.4 miles from Logiealmond Primary School.

As stated above, the evidence suggests that this distance is unlikely to deter families from settling in the community. There are employers in the area, such as Glenalmond College, which will continue to attract people wishing to move into the area. The community is within reasonable travelling distance of major road networks and larger settlements with employment, business and leisure opportunities. In the case of Logiealmond, where the school itself is not located within a settlement, it is more likely that it is the individuals within the community who will create the opportunities to link with each other and promote a community ethos.

Community facilities in Chapelhill will continue to provide a focus for events which bring the individuals within the community together.

The closure of Logiealmond Primary School would therefore have limited impact on the wider community. Moving the pupils to Methven Primary School would also enable individuals from Logiealmond and its surrounding communities to integrate with the community in and around Methven, enhancing both communities.

8.2 Community Impact – Use of the building

The last let booked at Logiealmond Primary School was in April 2016. This does not mean that the school is not used by the community. Use of the school is normally agreed with the Headteacher and most events take place during school operating hours. An example of this is the stay and play that takes place every Tuesday.

Most community events take place within Chapelhill Hall which is approximately 1 mile from the school. In addition, the Chapelhill Inn is also located a short distance from the hall. Glenalmond College also has close links with the local community.

The school building itself is not therefore the only community amenity and the loss of the building would not significantly impact on the community.

8.3 Pupil Projections/Pupil Impact

It is anticipated that the pupil roll at Logiealmond Primary School will not exceed 11 in the next 4 years. Although there are 17 pre-5's living in the area, there is an established pattern of parents of potential P1s choosing to send their children to other Perth and Kinross schools or elsewhere. It is therefore likely that the occupancy of the school will continue to be low.

If this option is implemented, pupils would attend Methven Primary School. The impact on pupils is detailed in the following sections on Travel Arrangements and the Educational Benefit Statement.

8.4 Impact on Travel Arrangements

The travel distance from Logiealmond Primary School to Methven Primary School is approximately 4.4 miles with a travel time of approximately 9 minutes.

Travelling for primary school education is common across Perth & Kinross because of the geography of the area. Currently the pupils attending Logiealmond Primary School journey between approximately 1.3 miles and 4.6 miles to and from school. Moving to Methven Primary School would mean pupil journey distances increase to approximately 4 miles and 8 miles each way.

Staff in Perth and Kinross tend to travel throughout the area to work in schools. Many staff do not live within the catchment area of the school they work in. 4.4 miles is a relatively short distance to travel in rural Perth and Kinross. It is therefore considered that there is very limited impact on staff travelling arrangements.

The community require to travel to access other services such as GP and dental surgeries, shops and post offices. As there are alternative public buildings at Harrietfield and Chapelhill, there should be no impact on travelling arrangements for users of the school's facilities.

8.5 Educational Benefits

Educational Benefit Statement

This Educational Benefits Statement is written from the perspective of benefits, should the preferred option outlined in the options appraisal subsequently be

implemented. This statement is focused on the educational benefits for pupils attending Methven Primary School.

Learning and Teaching

- Children attending Methven Primary School have access to a wide range of teaching and support staff. Methven has a nursery and six primary classes, a Headteacher who is not class committed and a Principal Teacher.
- Classes comprise an average of 20 pupils, and there are pupils of all age groups within the school. This affords all pupils the opportunity to work in groups, at peer level and across all stages in the school and in mixed sex groups. This allows the sharing of ideas, peer support, informal mentoring and relationship building, all of which contribute to the whole school experience. Teachers work collaboratively at Methven linking learning across stages on a termly basis and creating opportunities for collaborative/cooperative learning for all pupils.
- Flexibility in staffing at Methven Primary School means that good use can be made of the local context ,for example by involving children in Outdoor Learning and vertical groups, where pupils from different stages come together and form committees. Staff also work together to moderate standards of learning and achievement in the school to ensure that children make appropriate progress in a structured and progressive way through Curriculum for Excellence levels. Staff and pupils work together across the school to enhance the learning opportunities of pupils through the use of their individual portfolios of learning. They share progress in this area with parents regularly through the use of digital technology.
- A collegiate approach to professional engagement amongst all staff is evident within the school. They come together regularly to review and improve practice as a school, with partner services and other schools in the Local Management Group. Currently the staff in Methven are collaborating with other local schools to further develop effective approaches to delivering high quality feedback to pupils within their learning and teaching. There is a strong commitment across all staff to lead improvements in learning and teaching from evidence based research. This enhances the quality of learning and teaching through shared opportunities to develop effective approaches
- Effective arrangements are in place for planning, taking forward improvements through self-evaluation for all staff. Good practice is shared, leading to improvements in the learning and teaching in classrooms, to the benefit of the pupils.
- Work is differentiated to adapt to pupils' needs and pupils benefit from being able to work on co-operative learning tasks with others. Flexibility in staffing in Methven Primary School allows staff to be creative in planning for children with additional support needs; both universally and for targeted need, thus addressing potential barriers to learning.

- Methven Primary School has support from a Pupil Support Teacher, as well as Primary School Support Assistants, which not only benefits pupils with Additional Support Needs, but all other pupils, who can work in groups, and benefit from short term support.
- The nursery provides early learning and childcare for all children aged 3 to 5 years and entitled 2 year olds. This provision is within the setting of the school, allowing for seamless transition to P1, with pupils already familiar with the physical setting as well as the opportunity for regular work with primary peers. In addition, staff plan shared learning events and visits, with nursery children involved in whole school events.

Environment for Learning

- Methven Primary School benefits from its location in a village, with pupils attending from the community of the village of Methven and surrounding areas. This location, along with the mix of pupils from rural and village homes, provides a rich environment for learning and teaching.
- The school benefits from large grounds which provide opportunities for play, physical activity and outdoor learning. This facilitates eco learning and promotes health and wellbeing through play and team games, with features such as an outdoor netball court and trim trail. In addition, the school grounds and adjacent park at Methven Primary provides facilities presenting a wide range of opportunities for the pupils to experience a range of team and individual sports, such as cross country running, football, cricket and other team games, as well as gardening. Although enjoying a rural location, Methven's close proximity to Perth allows all children the opportunity to participate in sporting, learning and cultural experiences with other schools and organisations.
- Methven Primary has close links with the local Parks Committee and the school was involved in designing the park, as part of class learning. Ongoing involvement includes pupils being invited to plant trees in park, the Parks Committee have visited classes to talk about wildlife at The Den and the children regularly visit The Den.
- Methven Nursery makes regular use of the park for their Methven Mile and the woods behind the school for den building, fire building and outdoor learning. The nursery children have regular opportunities to learn about the life of the farmer who will stop and talk to them throughout the year about the jobs they see him doing in his tractor.
- As part of this proposal, a new gym and dining hall will be built, offering the delivery of quality physical education in a modern purpose built space. In addition to this, pupils will benefit from dining in a modern and spacious social environment. The new gym and dining hall will also provide the opportunity for additional, flexible breakout areas to allow for individual, group or whole class activities. The hall will also benefit the wider school community by providing an area where school events can take place.

- Methven Primary is accessible for children and adults with Additional Support Needs. It has accessible toilet facilities for children and adults and a lift is provided to allow access to all parts of the main school building.

Experiences and Opportunities

- There are numerous opportunities, for both present and future pupils, for social interaction in terms of peer activities in class and at break times and accessibility to school clubs and extra-curricular activities, for example football and netball, arts and crafts and the school choir. This session the Local Bowling Club have taught P6/7 to bowl. In addition, there are a range of pupils councils, facilitated by a teacher, but pupil led. These are the Eco Council, Fair Trade, and Sports Award Committees. The school house system allows for the organisation of regular house events and there is a commitment to charity fundraising across the school. These activities give pupils opportunities to lead and make decisions.
- Methven Primary staff plan regular opportunities for children to understand the heritage of the local community with activities such as den building at the woods, walks to explore local houses and homes, features of the community and studying wildlife and nature.
- Methven Primary School pupils enjoy the experiences offered by the strong links between the school and local business, such as the local café, garage and Post Office. These businesses are supportive of fundraising events as well as curriculum opportunities, such as Burns Suppers.
- Links with the local Methven Church enhance the pupils' experiences in aspects of Religious and Moral Education (RME), with visits to the church, and the local minister participating in assemblies. The school visits Methven Church Christmas service and the minister attends some assemblies and visits classes.
- Methven Nursery make regular use of the park for their Methven Mile, woods behind the school for den building, fire building and outdoor learning. The nursery children benefit from learning about the life of the farmer who will stop and talk to them throughout the year about the jobs they see him doing.
- Methven Primary School has an active Parent Council, with constructive and informative meetings, where parents discuss a range of topics, as well as organising fundraising activities throughout the year. They use the Community Centre nearby for social events to which the whole community are invited.

Summary of Educational Benefits

- Methven Primary School is a well- equipped and resourced school, with mixed sex classes at all stages in the school, including nursery.

- Methven Primary has a mix of pupils from village and rural homes, sharing experiences, which supports learning.
- The school roll allows all children to participate in peer support, classroom learning, and learning groups across stages and between classes, with the benefit of allowing children to have a wide and varied range of learning experiences.
- Learning and teaching at Methven starts with the early years provision, with seamless transition to Primary One.

8.6 Financial Impact

The financial savings generated from closing Logiealmond Primary School amount to £103,598 including mothball costs annually (refer to Appendix 4). The capital cost of £284,198 to improve the condition and M&E items identified along with the £165,000 to replace the dining centre would not be required.

These financial savings support the delivery of education across the whole of Perth and Kinross.

Combining pupils from both catchment areas into one school maximises use of the school estate and represents good asset management, while also enabling the children to continue to attend a rural school.

8.7 Environmental Impact

There will be environmental benefits from reduced energy consumption if Logiealmond Primary School is closed.

There is little impact on travel due to the small numbers of pupils to be transported over relatively short distances.

9. Conclusions

In November 2016, it was agreed as part of the School Estate Transformation project that an options appraisal should be carried out on Logiealmond Primary School due to under-occupancy.

At that time, the school had a pupil roll of 12 (Census 2015) and an approved capacity of 48 giving an occupancy level of 25%. The roll has consistently fallen due to parents choosing to send their children to other schools.

Information was collated on pupil numbers, housebuilding, finances, the school, the local area and community, travel arrangements and environmental impact to inform the options.

Each of the options was then considered and the outcome determined as follows:

Option	Option Description	Outcome
1	Catchment areas of the schools are reviewed to determine whether this would increase the occupancy at both schools and ensure their future sustainability. If sustainable, refurbish Logiealmond Primary School and Methven Primary School to improve condition at both schools	Rejected. Not a reasonable option due to not being able to create a catchment which will sustain the roll at Logiealmond Primary School without impacting on other schools and the travel arrangements of pupils from those schools. It has not been possible to expand the catchment of Methven Primary School to increase the school roll significantly.
2	Logiealmond Primary School remains open - refurbish the school to improve condition. Reduce capacity of Methven Primary School through a review of accommodation – including refurbishment of the school to improve condition.	Rejected. Not a reasonable option. No prospect of a sustainable roll in the school due to small numbers of pre-school children and primary aged children living in the catchment area. Also not all potential pupils in the area attend the school.
3	Mothball Logiealmond Primary School and move pupils to Methven Primary School. Refurbish Methven Primary School to improve condition.	Rejected. Not a reasonable option. No prospect of a sustainable roll in Logiealmond Primary School in the next 2-3 years due to small numbers of pre-school children and primary aged children living in the catchment area. Also not all potential pupils in the catchment attend the school.
4	Consider closing Logiealmond Primary School and move pupils to Methven Primary School. Refurbish Methven Primary School to improve condition. Capacity at Methven Primary School reduced following refurbishment.	Accepted as a reasonable option for the following reasons; <ul style="list-style-type: none"> • Educational benefits for pupils at Methven Primary School and Logiealmond Primary School including early years provision and seamless transition to Primary 1 for both sets of pupils. • There is no indication there will be a significant increase in the roll at Logiealmond Primary School. • Condition rating improved and the removal of life expired buildings at Methven Primary School.

The only option which is considered to be reasonable is to consider closing Logiealmond Primary School, with the pupils transferring to Methven Primary School. Special regard has been had to the rural school factors and the assessment of these is set out in the Options Appraisal. The anticipated educational benefits which are likely to occur should that option be progressed and implemented are also considered.

It is therefore recommended that the most appropriate response to the issues identified in relation to the roll at Logiealmond Primary School is that a statutory consultation exercise takes place on a proposal to close the school. As a result, pupils would be transferred to Methven Primary School. The delineated area of Methven Primary School would be extended to subsume the whole catchment of Logiealmond Primary School.

It is also recommended that the capacity at Methven Primary School is reduced from 229 to 176. This will allow a life expired building to be demolished. In addition a new gym/dining hall will be built. This will be funded through the Modernising Primaries Programme, which forms part of the Council's composite capital programme 2018-2023. Planning will take place to schedule M&E requirements from 2023 onwards through the Council's planned maintenance programme.

Community Engagement

Website and On-line Questionnaires

A 'School Estate Transformation' page was set up on the Perth and Kinross Council website which provided the wider community with an overview of information that the Council would be using in the options appraisal, including pupil projections and building information.

A questionnaire was also available for completion, for those people that could not attend community engagement events. The questionnaire asked people to respond with their views on a series of options and questions related to the options appraisal.

The questionnaire was available on the Council website from 23 August 2017 to 6 October 2017. Forty four questionnaires were completed online for Logiealmond Primary School and 17 questionnaires were completed online for Methven Primary School.

Drop In Sessions

A community drop-in session was held in the Chapelhill Hall, Logiealmond on Wednesday 27 September 2017 (3pm – 7pm). The drop-in session was attended by 25 people.

A community drop-in session was held in the Methven Community Centre, Methven on Thursday 28 September 2017 (3pm – 6.45pm). The drop-in session was attended by 27 people.

Content of Sessions

Visitors to the event were given an overview of information that the Council would be using in this options appraisal, including pupil projections and building and financial information. They were asked to:

- give feedback on the impact of each of the options being considered in the options appraisal either through using post-it notes or through filling in a questionnaire
- respond to additional questions related to the community within Logiealmond and Methven and how the schools form part of the community.

Logiealmond Primary School

Community Drop-In Session

27 September 2017

**Overview of comments received at Community
drop-in session and Online Questionnaires**

Online Questionnaire Feedback

- Forty four questionnaires submitted online – 27 completed, 17 partially completed
- 18% (7) of responses from parents, 25% (10) were from the other family members, 20% (8) of responses were from 'other', 33% (13) were from the wider community and 5% (2) responses from neighbours.
- Four people gave no indication of their relationship to the school
- Nineteen questionnaires were submitted without any comments
- 59% (16) of responses preferred option 1 and 41% (11) preferred option 2
- Seventeen questionnaires submitted gave no indication to their preferred option
- Questionnaire closed on 6 October 2017

Online Questionnaire Feedback

Option 1 - Catchment areas of the schools are reviewed to determine whether this would increase the occupancy at both schools and ensure their future sustainability. If sustainable, refurbish Logiealmond Primary School and Methven Primary School to improve condition at both schools.

Comments

- Most logical. There are 18 young children under school age within the current catchment. As a large local employer it is important to us to have a local education establishment for young children.
- Maintaining wider choice of educational provision for pupils and parents.
- This seems a sensible option so the council is at least informed. The school has thrived in the past few years and the numbers have grown.
- Logiealmond is an excellent rural school and local families benefit enormously from its existence.
- I believe there is great benefit in having smaller, quality schools than combining pupils in larger, less accessible settings.
- Logiealmond is closer to me as a potential parent and is well known for its excellent education for the children.
- My children have benefitted greatly from the education provided at Logiealmond PS. They all, now aged -, continue to do very well at school and I attribute this in significant part to their early schooling. The location of the school is a bonus, and a very good thing, and enhances the quality of the learning experience. Some children - mine included - undoubtedly do better in a smaller school environment and this should rightly be included in the educational provision plan of the Council.
- In an isolated, rural area the catchment is always going to be variable - gathering more pupils from more densely populated areas would be sustainable and beneficial. Possibility to reduce strain on Methven and boost Logiealmond by offering an element of shared catchment in the Methven area. Likewise, in the Crieff catchment there are pupils who may feel culturally more connected to the rural community of Logiealmond than the urban one of Crieff. Look into a shared catchment in that region too. Important not to infringe upon the Logiealmond catchment as it stands however - it must be maintained intact or the purpose would be defeated.
- I believe the school is an important part of the community and a link between families.
- Both these schools are part of the local community and closure of either would cause unnecessary travel for children on country roads
- Either option one or two would allow Perthshire to sustain a rural development programme, without overreliance on cars/roads/congestion,,: both these issues should feature a lot in C21st planning, (particularly with Huntingtower development, as there may be need for room for growth-look at Abernethy school which was too small even before it opened)
- Great education at Logiealmond which has transformed confidence and learning of my niece who would otherwise be quite isolated from her peer group where she lives. Provides wonderful resource and centre for local community which would struggle to interact with communities further afield.

- Closing rural schools is a terrible idea. The idea should be to sustain and promote rural living by making moving to the countryside a viable option. One key parameter for parents is schooling, if you have to drive your children to Perth then why would you move to the country?
- My preference for Option 1 is based on the following main reasons: a) I am extremely satisfied with the high quality of educational services provided to my eldest child at Logiealmond Primary School and wish to see the school remain open, and I look forward to enrolling my other child at the school in 2019; b) Enrolment at Logiealmond Primary School has been steadily improving on average over the last ten years and there are many more pupils set to enrol in coming years, as such the expansion of the school's catchment area would enhance this existing positive trend; c) Logiealmond Primary School has been rated with "A" suitability and should receive proportionate financial support to enable a sustainable future for the school's teaching services; d) Logiealmond Primary School provides a vital social and cultural hub for the surrounding local community in Glenalmond and neighbouring areas, through a programme of regular community events and extracurricular groups, such as the baby and mother play days, with additional plans for a new after-school care group; e) Logiealmond Primary School also provides good value of service through extra in kind volunteering from parents and community members making significant contributions to the school's success and sustainability, which should be acknowledged and encourage renewed sustainable financial support for the school's services and condition; f) Logiealmond Primary School's building is shown on the 1866 1st edition Ordnance Survey map of Perthshire and should be acknowledged as a historic asset, and therefore the condition should be refurbished in partnership with the own to ensure a sustainable and appropriate future for the school; g) Logiealmond and Methven Primary Schools should both remain open to avoid any negative impact on either communities.
- Vital link between isolated families in the community. Logiealmond offers a fantastic quality of education.
- As new parents who live within 2 miles of the Logiealmond School we would like to see a review of the catchment area of both schools undertaken to ascertain which school I will be able to take my son too. As local residents we have heard nothing official, only gossip from neighbours regarding the schooling situation. How about you knock on some local's doors and at the very least find out exactly how many school aged children live within the catchments of both schools. As far as I understand there are 17 new-borns in the catchment over the last year, not including our own. Your projected figures are wrong.
- It is an excellent school and offers great opportunities for local children. Extending the catchment area would make Logiealmond viable and reduce strain on Methven.

Online Questionnaire Feedback

Option 2 - Reduce capacity of Methven Primary School through a review of accommodation – including refurbishment of the school to improve condition. Logiealmond Primary School remains open – refurbish the school to improve condition.

Comments

- My daughter would be attending Logiealmond Primary School in 3 years' time. Methven for us is not an option. I am a teacher myself and the pupils at Logiealmond are well rounded, well-educated and well mannered. The condition of a school is not important to me and as such, place the monetary funds into Methven if it means Logiealmond can stay open. Should Logiealmond close we will need to move home.
- Because Logiealmond school is wonderful.
- I am keen for Logiealmond to remain open and this option appears to be the only one that will definitely keep it open.
- I firmly believe that it is vital for Logiealmond to be kept open for the sustainability of life in the countryside, the excellent education it provides for our children and the important part it plays in the local community with its annual events and open mornings, the Stay and Play group for babies and their carers, the regular shows performed by the pupils to which the community is invited, the annual Halloween party open to all, etc. Whether this means that catchment areas are reviewed or capacity at Methven Primary is reduced either way I believe it is vital that our vibrant and excellent school remains open. In order for children to understand how to live in the countryside they have to experience it, and the situation of Logiealmond Primary makes this happen. We need to ensure that there are future generations who understand life in the countryside in order to prevent the demise and ultimate death of this important environment. Logiealmond Primary plays an important part in this process and must therefore remain open, not least to allow other families to move to the area and into some of the many properties available for rent on the nearby estates.
- It is important for the community that Logiealmond stays open. It offers an excellent education to the families in this rural location and a centre focus for the community as a whole. If Logiealmond were to close, it could potentially be harmful for the rural community. Logiealmond is a lively, vibrant school in the heart of a rural community. It not only offers primary education but it is a meeting place for pre-school parents and their children.
- If adjusting the catchment area does not increase the occupancy of the school to the level demanded by the council in order to keep it open, then Logiealmond P.S. would, I assume, be under threat of closure again, and I really don't want that to happen. Further, continued threat to the school status only puts off potential students and their parents. We, as new parents to the area, were very wary of putting our child to Logiealmond because of the review the school was going under previously. Other parents were put off outright, and I have no doubt this is still an issue. Glenalmond College has a very large number of teaching staff (and their consequent families), and if Logiealmond were to be refurbished it would make it much more desirable as an option. Option 2 allows for the refurbishment of the school, without the

threat of closure dependent on occupancy. The teaching standards, beautiful location away from busy roads and warm feeling amongst the students make it a lovely school and an incredibly important addition to the community. With attention from the council, it could be a real example to other rural primary school, much like Glenlyon is.

- Option 2 is also very sound and positive. Schools and their communities look to the council to support them in their efforts to provide the very best education for young people. Option 2 suggests the council want to be ambitious, proactive and supportive.
- Sustaining and supporting rural areas adequately is vital for all parts of Scotland to thrive and this includes keeping open and improving small local primary schools, particularly those, like Logiealmond, with a high rating.
- Logiealmond is a great wee school and every effort and investment should be made to ensure it remains open.
- Logiealmond Primary School should remain open, but this should not result in the reduction of services at Methven Primary School as per Option 2.
- I feel the closure of Logiealmond Primary School would have a massive impact on my child's well-being, his academic attainment and the wider community in terms of its availability to meet the educational needs of local children and the focal point it offers for the community.

Online Questionnaire Feedback

Option 3 - Mothball Logiealmond Primary School and move pupils to Methven Primary School – refurbish the school to improve condition.

Comments

- Your questions feel very much as if you are pitting schools and parents against each other. Is mothballing really appropriate language?
- Other options of mothballing or closure are the last thing any of the Logiealmond parents and students want. Closing the school would have a terrible effect on the whole community spirit and would damage it irrevocably.
- I strongly disagree with options 3, 4 and 5 because in my opinion these will have a very negative impact on the local community in Glenalmond and significantly reduce the quality of teaching for pupils at Logiealmond Primary School.

Online Questionnaire Feedback

Option 4 - Reduce capacity of Methven Primary School through a review of accommodation – including refurbishment of the school to improve condition. Consider closing Logiealmond Primary School and move pupils to Methven Primary School.

Comments

There were no comments made online for Option 4.

Online Questionnaire Feedback

Option 5 - Consider closing Logiealmond Primary School and move pupils to Methven Primary School – refurbish Methven Primary School

Comments

- Close the school if necessary, but make sure there are adequate facilities in place for the increasing school aged populations.
- Closing Logiealmond would be a mistake as a) it's a great learning environment and b) it would put further strain on Methven.
- The irreversible step of closing the school would be very sad and would diminish the vibrancy of the community on that side of the glen and in the village of Harrietfield.
- I disagree completely with Logiealmond being closed. The education it provides for our children is excellent. My children are engaged in their learning, growing in confidence and maturity, enjoy learning and are taught by experienced and dedicated staff who understand their individual needs. I would therefore be extremely reluctant to have to move them to another school. Stability is important and our children love their school. Whether catchment is reviewed or capacity at Methven is a council decision, but I feel strongly that Logiealmond should remain open.
- The parents of children currently at Logiealmond would not be happy uprooting their children and forcing them to go to Methven primary (a community of which they are not part). If this was the only option for the children in the Logiealmond catchment area, it would cause families to move away from the area. It is important to have a choice and have a local primary school in the community where you live.
- Would be terrible to see the school closed. It encourages community spirit.
- I would not close the school as it is too premature a decision, and at present it works very well in the community.

Online Questionnaire Feedback

Are there any other options/proposals that have not been considered?

Comments

- Increase the pupil roll of Logiealmond by ensuring that all children in its catchment area go to the school rather than to Methven primary.
- Establishing a nursery/pre-school on site at Logiealmond would be the most beneficial option. This would provide a vital service in the area which currently does not exist in any form and it would guarantee an increased pupil roll in the future. Currently, if pre-school provision is found elsewhere - in Crieff or Perth usually - we find that pupils stay there for school. Offering this at Logiealmond would be the best option for the community and for our young people.
- Creating more provisions for pre-schooling at Logiealmond as there is a good demand for it.
- Consider perhaps outreach community work for preschool/mixed ages, such as afterschool/weekend events?
- Preschool provision in Logiealmond area would be popular and would support numbers in the primary longer term as increasing numbers of younger families have moved or are moving to the area.
- Perhaps the council could consider using Logiealmond as a pre-school facility in addition to a regular primary. Last time I was in the Glenalmond area a number of parents told me this would be a good idea. Increased and sustainable investment in Logiealmond Primary School in partnership with the Parent Council to support the already high quality of service, provide a sustainable future for the school's condition and encourage continued increase in enrolment of new pupils. There could have been an option for "none of the above".
- Offer a pre-primary education for younger children.
- Split the catchments for Logiealmond between Bankfoot and Methven. Auchtergaven will be closer for some families and is a good school.

Questionnaires were provided at the drop-in session, the feedback is as follows:

Option 1 - Catchment areas of the schools are reviewed to determine whether this would increase the occupancy at both schools and ensure their future sustainability. If sustainable, refurbish Logiealmond Primary School and Methven Primary School to improve condition at both schools.

Comments

There were no comments made on Option 1 on the questionnaires completed at the drop-in session.

Questionnaires were provided at the drop-in session, the feedback is as follows:

Option 2 - Reduce capacity of Methven Primary School through a review of accommodation – including refurbishment of the school to improve condition. Logiealmond Primary School remains open – refurbish the school to improve condition.

Comments

- General area too sparsely populated for option1 to have any significant effect. Logiealmond small, rural style is an option. I would desire for my children. Part of community and sense of belonging given location. I/we are not really part of Methven community. Closure is a final nail in the rural life/community coffin through black & white financial decisions rather than consideration of the bigger picture. Education given at Logiealmond is superb and is a CFE class leader.

Questionnaires were provided at the drop-in session, the feedback is as follows:

Option 3 - Mothball Logiealmond Primary School and move pupils to Methven Primary School – refurbish the school to improve condition.

Comments

There were no comments made on Option 3 on the questionnaires completed at the drop-in session.

Questionnaires were provided at the drop-in session, the feedback is as follows:

Option 4 - Reduce capacity of Methven Primary School through a review of accommodation – including refurbishment of the school to improve condition. Consider closing Logiealmond Primary School and move pupils to Methven Primary School.

Comments

There were no comments made on Option 4 on the questionnaires completed at the drop-in session.

Questionnaires were provided at the drop-in session, the feedback is as follows:

Option 5 - Consider closing Logiealmond Primary School and move pupils to Methven Primary School – refurbish Methven Primary School

Comments

There were no comments made on Option 5 on the questionnaires completed at the drop-in session.

Questionnaires were provided at the drop-in session, the feedback is as follows:

Are there any other options/proposals that have not been considered?

Comments

- Reduce capacity of Logiealmond.

Community Drop-In Session

Drop-in session ran from 3pm – 7pm on 27 September 2017

- Twenty five attendees at the session
- 16% (4) of attendees were neighbours/wider community
- 44% (11) of attendees were parents
- 32% (8) of attendees were past/prospective parents
- 4% (1) attendee was a pupil
- 4% (1) attendee was a Councillor

Comments received at the drop-in session

Option 1 - Catchment areas of the schools are reviewed to determine whether this would increase the occupancy at both schools and ensure their future sustainability. If sustainable, refurbish Logiealmond Primary School and Methven Primary School to improve condition at both schools.

Comments

- Bertha Park a possibility to include in catchment?
- It is all fine and well to review catchment areas but this will only work if the areas are populated!
- Maintain the integrity of local rural school by enhancing the catchment
- Not sure this would help. Catchment areas do need reviewed so all children should be at Logiealmond are able to attend/transport etc!
- This is the obvious solution to keep the communities together and be able to accommodate the new influx of children and others to come.
- Every effort should be made to increase occupancy, which benefits teacher job security and the breadths of school roll. Concerned level of cost of school refurbishment would be deemed cost prohibitive – condition is B for main building which is reasonable
- Some rural areas towards Crieff are much more linked to Logiealmond than Crieff but kids go to Crieff. Think rural communities could benefit from Logiealmond Primary. SHARED catchments with Crieff, Methven & Madderty would be an exciting option.
- Review catchment areas – families have chosen to move to rural Scotland & chosen rural schools for their children. City schools/Methven was not an option. Don't lose families from rural Scotland.
- Save Logiealmond
- This is a possibility – talk to the estate about refurbishment or help with it. I am sure the estate would like the school to stay open.
- Country school for country people
- 48 would be a ridiculous number for this school
- I am planning on moving into Logiealmond with my young family both my children will be going to the school. I don't understand why PKC would upgrade the for a young family (affordable housing scheme) to then plan to close the school. While the has work done could you not do the school at once
- An increased catchment would be a great thing. There are families who would like to come to Logiealmond but need transport so have to be in catchment. Larger catchment would certainly increase pupil roll.
- Make it easy for parents from other catchments to come to Logiealmond for a special, more individual experience.
- Not sure this would improve numbers at either school and would involve a reasonable financial input, money which could be spent on dining hall.

Comments received at the drop-in session

Option 2 - Reduce capacity of Methven Primary School through a review of accommodation – including refurbishment of the school to improve condition. Logiealmond Primary School remains open – refurbish the school to improve condition.

Comments

- Definitely keep it open! The results of closure on Scottish rural communities have long lasting impact! Think of Beeching's closure of the railways. Our country has been known for its educational excellence in the past. All pupils do better in smaller groups – the Government is committed to narrowing the attainment gap – small units must be a part of this.
- This is the best option as it recognises the key part the school plays in the community. Investing in the school will show it has a long term future thus removing any concerns future parents may have at sending their children here.
- Include provision of nursery and after school care.
- Invest in Logiealmond – provide a nursery and after school care – I'm convinced there would be a waiting list!
- Sensible option. Refurb could be staged to spread cost?
- Best option.
- This is a very positive option. Both schools would benefit from this option and all young people in the area would be better served. Two excellent schools with good capacity could be ensured.
- Option 2, I feel in the main one that will benefit us. It means we will stay open! It also means we will get the improvement we need and cannot be held back from our ultimate capable abilities.
- Definite preferred option. Fully support Logiealmond staying open. It serves the community well and can into the future if council support is there.
- This is the best option for both schools as Methven is overcrowded and in need of a refurb! Logiealmond is a well-educated school with polite pupils. Just needs the catchment area reconsidered as this may help its number. It will be a shame to know it down! (SAVE LOGIEALMOND).
- This should be the only option.
- Option 2 I feel is the best option for both Logiealmond & Methven. Reducing capacity while refurbishing will ensure both areas retain their precious local school and identity.
- This is the most community orientated option. Both communities deserve a good school. Logiealmond/Harrietfield/Glenalmond/Little Glenshee only come together in this building. It provides an excellent education and benefits the children being taught in one class. The children are more considerate of younger pupils/friendly/caring.
- Local children really thrive in this school, we must maintain this opportunity
- Best option for the school! Logiealmond could be a real gem of a school – beautiful location, very happy students who love it, fresh air in the Perthshire countryside, strong community, caring staff offering excellent education.

- Logiealmond School must stay open. There are good reasons for small school to flourish and people move in with children who often benefit from smaller schools.
- Logiealmond should be invested in. it stands as an opportunity to exemplify why rural Scottish schools are so profoundly successful.

Comments received at the drop-in session

Option 3 - Mothball Logiealmond Primary School and move pupils to Methven Primary School – refurbish the school to improve condition.

Comments

- Mothballing not a good option for anyone.
- If the school is mothballed, I cannot foresee it opening again. Not an option in my opinion.
- There is no acceptable justification for mothballing a sector leading school because it does not meet available 'max roll' figures. It is flourishing and serving the local community to the highest standards.
- Mothballing: NO!!! The school just won't open again!!
- Children would have to travel a lot further if Logiealmond was to be mothballed. It would also leave a sad community to see it go!
- Concerned mothballing simply means closure at a later date since the pupils have moved and the culture/appetite for reopening has moved on.
- Not an option for my family. I would not send my children to Methven after the wonderful experience they had at Logiealmond.
- No point in "mothballing" – just the same effect as closure. Terrible idea.
- One of the more concerning options as would it be easier to close a mothballed school?!? Not a good idea.
- Closure by any other name. A drawn out process which would leave to much uncertainty for the whole community.
- This would be a very sad outcome. The location of the school is beautiful, safe & healthy for the children.
- Not an option – my children would not be sent to Methven.

Comments received at the drop-in session

Option 4 - Reduce capacity of Methven Primary School through a review of accommodation – including refurbishment of the school to improve condition. Consider closing Logiealmond Primary School and move pupils to Methven Primary School.

Comments

- Especially not as Methven is also on a potential closure list!
- No way! I would NOT want to go all the way to Methven every morning!
- Compare the quality of education provided by the two intuitions – to close Logiealmond would work against the needs and interests of good education. Logiealmond is the local community. To close it is to deny rural society.
- Squeezing more pupils into Methven would benefit no-one. Our community would lose the central social focus it has and our children would suffer, longer term this option would lead to rural depopulation.
- We live up Little Glenshee so sending our son to Methven would make a long commute – potentially dangerous during the winter.
- Very concerning – a closure would lead to the death of rural communities. We are within walking distance at Glenalmond – Methven would mean busing in – not suitable in winter months!
- If it is an option to reduce the capacity of Methven then why can we not consider this in Logiealmond?
- If this is an option for Methven then this should be looked at as an option for Logiealmond.
- If Logiealmond school accommodation could be reviewed to move the dining room inside (use one of the classrooms) this would bring occupancy up and take the overall condition back up to at least a B.
- Wouldn't go to Methven Primary.
- Not a good option. Again I think this just means closure for Methven!!!
- Moving pupils to Methven would mean we would lose the rural, heart of the community. Pupils would lose their identity.

Comments received at the drop-in session

Option 5 - Consider closing Logiealmond Primary School and move pupils to Methven Primary School – refurbish Methven Primary School

Comments

- Not an option. I would remove my child from the system and home educate rather than risk winter travelling etc.
- Logiealmond is fantastic!!!!
- Not the most creative solution. May seem like an easy option but quick fixes often have long term unforeseen consequences. Keep our excellent small local school – appreciate it's worth.
- A very poor choice indeed. Are any of these decisions based on the quality of education provided for the individual child??
- I would not like this option since the school provides for a community focal point. The catchment is unique/distinctive and the atmosphere fostered there is very positive.
- I have been at Logiealmond for the past 7 years. I have always loved it and I would hate it if it closed down as it is a really good school.
- Agree with refurbishing Methven however the lack of focal point in the community for young families would be highly detrimental to the area. Would result in an aging remote population. Which is not in anyone's interest.
- The whole feel of the glen, its warmth and community spirit would be damaged irrevocably by closure.
- Keep Logiealmond open and don't even consider moving to Methven. Terrible idea!
- NO.
- NO I love Logiealmond.
- I love Logiealmond.
- This is not an option for us my children would not go to Methven.
- Really wouldn't like this option to go ahead. I feel we would be losing a very loved and vital part of our community.
- Logiealmond should be celebrated not threatened. It is an excellent school that provides a consistently quality education. Our community is centred on the school – it is how we know each other across this often isolated catchment. We would lose the educational benefit of a fine school, the social benefit of a great community asset and gain nothing.
- No way!
- Keep Logiealmond, it's the best.
- NO.
- This would be profoundly negative for Scottish rural society. The school is sector-leading and highlights all that is good about curriculum for excellence. It has a low headcount because it has a sparsely-populated community (with a strange catchment size), not because of the education it provides.

Comments received at the drop-in session

Are there any other options/proposals that have not been considered?

Comments

- I support proposals to maintain and enhance the provision at Logiealmond Primary and would argue against any attempt to close Logiealmond Primary on these grounds: 1 the well-being of pupils and staff at Logiealmond. 2. The maintenance of parental choice by keeping a small, rural primary school. 3. The promotion of diversity and inclusion, recognising that provision should be made for those who choose to live (or are required to live) in remote and rural areas like Logiealmond.
- This is a wonderful resource which should be safeguarded – getting children into the countryside and out of doors is a drive for many early years' enhancers. If (as I hope) Scotland delays formal education to come in line with many western countries – this school is the ideal for our youngest pupils to thrive, before they encounter larger groups etc. a nursery, a nurture class or similar could easily be accommodated in this "A" type provision(suitability). This alongside local children if numbers are low, if numbers increase then the school might not have the capacity for additional purposes. Let's be creative and use what is an excellent provision rather than opt for even bigger schools. 1. Community buy out. 2. Investment by the owner of the school building. Finally put something back into the area. 3. Open school up to wider community eg evening meetings, clubs, talks etc
- At least 18 pre-school children in the area so projected pupil roll is nonsense. Actual projection for 2021 should be in excess of 20-30, many more is school is adequately supported.
- Reduce capacity of Logiealmond by moving the dining room inside. This decreases the capacity – increasing the school roll and removes the stand alone dining room which moves the condition of the building from a grade C to B.
- The spare capacity could be used to provide care for 3-5 yr olds as recommended by the Commission on Rural Education.
- A nursery I feel would be a really good option for the school. Encouraging children to carry on up through the primary!!
- A nursery!! This would then limit the amount of local children who leave the area to attend nursery than form a connection to the school connected to nursery.
- Nursery/pre-school for younger children. After school clubs, out of school clubs sub-let area.
- We would like the council to be supportive and ambitious. Logiealmond is a tremendous school and we should be enabling more children to access its benefits.
- A nursery – within walking distance of many people's homes, reducing our carbon footprint and encouraging healthy children!
- Reduce school capacity as recommended for Methven and use that space for pre-school/after school care.
- Establish nursery/pre-school. Ensure after-school club. Both these options could guarantee greater pupil numbers. There is a desperate need for

nursery/pre-school provision in the area as there is a lot of pre-school kids looking forward to a Logiealmond education.

- The area is crying out for pre-school care! If Logiealmond were able to provide a space for that, the increase in roll would happen straight away.
- Leave it how it is. It's great. Don't close it down!
- For there to be a nursery for the younger community.
- Pre-school/after school care – bound to increase the school roll.
- The building and space would be perfect for a pre-school 3-5 environment. Using the school house building and adding an after school wrap around programme term times only. There is an abundance of qualified staff and young children at Glenalmond/Crieff and 4 mile radius of the school.
- Adding a nursery environment/wrap around care for working parents. The school would reach capacity without a doubt. Keeping the rural school ethos, surroundings – but with up-to-date facilities.
- Keep it as it is.
- The school does not need to change as it seems as a highlight of primary education. Support its growth (after school provision etc) and it will continue to flourish. The projected rolls are simply not reflective of the potential of the local community.

Comments received at the drop-in session

How would you describe the community and what are your thoughts on Logiealmond Primary School as part of the community?

Comments

- Primary school is at the heart of our community – and well supported by local residents as well as parents. Our community needs focal points like the school to help to continue the great community feel and include our younger members of society to feel part of that.
- It is great and I really like it.
- Logiealmond is exceptional, community beetle drives, plant sales, Christmas shows – they all attract all the local community. It forms the heart of a rural society. To remove the school is to damage Scottish rural community.
- I have dealings with many children from various schools in the area (6+ schools). The pupils from Logiealmond stand out above the rest as the most confident, clever, well-mannered children. Always 1st to volunteer and help their fellow cub scouts with whatever is asked of them. This helped us decide we would like our son to attend Logiealmond PS when he is of age.
- Farming community and elderly retirees. Logiealmond School is the heart of the community.
- As a previous parent – the school is very much part of the local community as is Chapel Hill Hall/other local amenities. Rural schools are unique and specialised and should be preserved, bringing more young families into rural communities.
- Logiealmond is the lynchpin of this community. We would not know each other without it. In this area your closest neighbours can be miles away. We have a profound sense of community here and it is almost entirely due to the school and the connections it enables.
- Very popular stay and play sessions for pre-school kids are run at Logiealmond. Nothing else like this in the area. All kids attending are intending to go to Logiealmond Primary in due course.
- Vital. Great cross section of life is brought together. Closing the attainment gap.
- Logiealmond P.S. is the heart of an already fragile, rural, local community. The pupils who attend here are the most polite, well mannered, bright children you could ever hope to meet. The school is the focal point, hosting many a coffee morning and flower sale!
- Very important part of the community. Communication, friendships, community spirit. Good learning of life skills in so many ways!
- It is a rural community with a broad mix of people, incomes and jobs. The school provides the only place locally where children from these different backgrounds interact.
- The school is a fundamental part of the local community, linking a disparate population. The community is mix of demographics. A blend of agriculture and other rural occupations and education.
- Really excellent resource for the community, which could have even more positive benefits if after school care. It would encourage more young families to the area and ae it a more sustainable community.

- The community is not well serviced – there is no local public transport, there is an issue about water, broadband is patchy or non-existent. The school is one of the few services remaining.
- To keep the community together it's imperative that the primary school is kept open.
- The community is to spread out and from very different backgrounds ie, academic from college, agriculture, from farms and other tourism related industries and services. The school brings these backgrounds together with wonderful results.
- Logiealmond is a very important part of the community. Without the school I would not know any other families in the area about Glenalmond College
- Logiealmond is friendly and it is good because it is small and you get to know your classmates really well. It is good because as it is small it means you get lots of help from the teachers.
- Logiealmond P.S. is vital to the community. It's like a home-from-home for our son and his friends. The school bus does a circular route round the glen and the children have a very strong sense of place and security. It's heart-breaking to see how potential closure saddens the children.
- School is essential part of the local community and for parents/children to mix with locals. Methven PS would not provide that opportunity.
- Events such as plant sales etc bring together the wider community.
- Important local employer
- It is a friendly community with lots of friendly faces. Everyone pulls together. The school is a great opportunity for the children to have a high standard of education.
- As a new mum to the area, the school has been absolutely fundamental in creating friendships with others in the community. Nativity plays @ Xmas, bonfire parties @ Halloween, coffee mornings, gardening, textile recycling and the toddler group are some of the many elements of the school that make it so important.
- Fun. Good.

Comments received at the drop-in session

What do you think are the reasons the school roll is low?

Comments

- Not many people have heard of the school.
- Parents may work out with the area so child may attend schools handiest for parents.
- Lack of available housing. Lack of decent housing. Lack of land to build housing. HOUSING.
- Elderly retirees' only ones to afford the few available houses. Ergo no young children.
- No infrastructure/amenities to entice new residents. Nothing for youth eg youth clubs. No incentive.
- The occupancy rate doesn't seem to correspond to the amount of inhabitants in the area.
- It is not low. It is a rural community with relatively few (compared to urban settings) kids. The roll has grown in the last 7 years because it is fantastic school. The school has had to compete against neighbouring schools with after-school provision. When Logiealmond gets this the roll will expand quickly.
- Rural area – not high density housing. Private house prices rather high so often bought by people who are older. New house building has attracted some younger people.
- Lack of pre-school provisions. There is an abundance of children local to the school that travel out with the area to nursery – they then form connections to the associated schools. As a parent of a baby I would love there to be a nursery @ Logiealmond, within walking distance of our home.
- Would like to have nursery at the school. I feel this would encourage children to stay right through. Especially now with mother & toddler and after-school club.
- High land and house prices reduce the potential for young families to settle here.
- Lack of nursery at the school. Children who start at other nurseries then tend to stay on at the school it is connected to.
- Many empty estate houses in catchment, no service bus route, no pre-school/after school care, not enough power cuts/single men.
- Empty estate properties not being let. Poor water quality problems may have put people off moving to the area (but note new borehole proposals might influence this medium term).
- The school has lost students in the past because of the constant reviewing of the school status. Refurbishing the school would make it v. desirable.
- Catchment areas need assessing! We need a bus route.
- Logiealmond needs a nursery or pre-school. There are many potential students but they go to nursery in Crieff/Perth and make a natural progression to the school attached.
- Preschool/nursery would help. After school care.
- The school roll is not low considering the number of houses in the catchment area. The school roll is increasing there are 15+ under 5's in the area.

- High rents at some of the properties leaving the properties empty.
- Parents want stability for their children and know of the past threat of closure so want to avoid the possibility of changing schools. Negative media coverage has contributed to this.
- No after-school provision. No pre-school/nursery. Ongoing threat to school from council.
- Demographics... set to rise with many young families starting families at Glenalmond.
- Lack of a pre-school provision, (where there is perfect space to expand – the school house) wrap around care. Catchment area should be expanded to further rural area where families have chosen to move to.
- Historically, past issues with catchments/boundaries means children went to Methven and then made difficult to increase/gain momentum.

Methven Primary School

Community Drop-In Session

28 September 2017

**Overview of comments received at Community
drop-in session and Online Questionnaires**

Online Questionnaire Feedback

- Seventeen Questionnaires submitted online – 10 completed, 7 partially completed
- 69% (11) of responses from parents, 25% (4) of responses from other, 6% (1) of responses from neighbours, 1 has given no indication of their relationship to the school
- Nine questionnaires were submitted without any comments
- 33% (3) of responses preferred option 1, 11% (1) of responses preferred option 2, 33% (3) of responses preferred option 3 and 22% (2) preferred option 5. There was no preference for Option 4. Responses from 8 questionnaires gave no indication of their preference.
- Questionnaire closed on 6 October 2017

Online Questionnaire Feedback

Option 1 - Catchment areas of the schools are reviewed to determine whether this would increase the occupancy at both schools and ensure their future sustainability. If sustainable, refurbish Logiealmond Primary School and Methven Primary School to improve condition at both schools.

Comments

- Both schools to remain, both areas to see increased uptake through new build. Schools in our village communities are essential to rural life. Go save money elsewhere...
- I feel it's important to both ensure a good level of capacity at each school and upgrade both schools.
- I believe there is a place for both schools as they provide different experiences. Small hamlets like Logiealmond shouldn't suffer and lose a community focal point just to save money. The Council has a duty of care to ensure more rural communities remain viable. However parents living nearby need to make use of their local school rather than going to Methven. Methven population is surely likely to grow as there is land banked by house developers which is bound to get built on in the next 20 years.

Online Questionnaire Feedback

Option 2 - Reduce capacity of Methven Primary School through a review of accommodation – including refurbishment of the school to improve condition. Logiealmond Primary School remains open – refurbish the school to improve condition.

Comments

- Being a former pupil myself, I feel that the facilities at Methven are already stretched. Whilst I know it is not at capacity I don't feel that if the numbers increased there would be the space. The main building and gym hall need a lot of money spent on them to bring them to a decent standard.
- As long as the decisions benefit all pupils and ensure teachers don't lose their jobs. I am happy to support any option but 2 my preferred
- Think the children from both would benefit all being together - prepare them in numbers for secondary school and also allow the money for resources to be spent once so rather than having 2 of the same thing (1 at each) there can be 2 different resources that all can use . The school would also benefit from either a breakfast club for working parents or an afterschool club for the same reason.

Online Questionnaire Feedback

Option 3 - Mothball Logiealmond Primary School and move pupils to Methven Primary School – refurbish the school to improve condition.

Comments

- Many children from Logiealmond/Harrietfield field in the past and now come to Methven already. And with constant building work (new houses) going on in Methven and surrounding areas, it seems inevitable that we will take in more children.

Online Questionnaire Feedback

Option 4 - Reduce capacity of Methven Primary School through a review of accommodation – including refurbishment of the school to improve condition. Consider closing Logiealmond Primary School and move pupils to Methven Primary School.

Comments

There were no comments received online for Option 4.

Online Questionnaire Feedback

Option 5 - Consider closing Logiealmond Primary School and move pupils to Methven Primary School – refurbish Methven Primary School.

Comments

- Logiealmond only has around 8 students. I don't feel this is viable cost wise to remain open. This is a shame because it is a good school and the children are Happy, however it boils down to cost. If the children were moved to a larger school they would mingle with a variety of different children and hopefully have more opportunities.
- As we live in we were actually in Logiealmond PS catchment and we visited both schools before deciding Methven was the better option for our kids. Mainly because of the low number of classmates and social interaction with friends they'd have at LPS. But also I found the school to be cramped and run down. Most of the pupils there are children of lecturers and staff from Glenalmond College and I got the feeling it was being kept alive purely as a peek for the college staff, it's even mentioned in their recruitment info. I don't see how LPS can survive when larger schools than it have been closed. Let Glenalmond College buy it and run it as a Primary for their staff. Methven Primary is a great village school and a hub of our community. It is a friendly, welcoming school with values that are current and improvements have already been made since Mrs Speights arrival 2 years ago, including the addition of the invaluable nursery. The buildings on the grounds could do with refurbishment and renovation to put them to better use – in particular the former Kindergarten premises which has been due for demolition for 2 years but hasn't happened. The dinner hall capacity could be dramatically increased by using this building of the former site. I think the closure of Logiealmond and the movement of the 7 or so pupils is the best option, as a budget increase for Methven would allow for improvements instead of throwing money at LPS to keep it wind and water tight. 7 pupils are neither here nor there to a school with 100+. I hope that the restructure will also be a good step forward to creating a Breakfast or After School club for MPS as it is very much needed. As a parent I would happily volunteer time to help with school refurbishment and I know many others who would pitch in too. Please use that resource.
- Tiny school at Logiealmond and will give opportunities for pupils at both schools. Kindergarten and school gym hall building have huge potential and would be great to see the facilities improved for all.

Online Questionnaire Feedback

Are there any other options/proposals that have not been considered?

Comments

- I don't see how keeping an old building like LPS open for 7 children is a viable option in the current circumstance. Methven has the capacity and experience to transition the children well and welcome the parents into its community. The site at Logiealmond could be offered to Glenalmond College for its own purposes or sold off as a private dwelling. The need for school buses is already apparent throughout Logiealmond for those attending Methven through choice, so there would be a saving made there too. It's a no brainer I'm afraid and if it is kept open it will only be the influence of Glenalmond and Scone Palace estate.
- I think Methven School needs some major refurbishment in particular a dinner hall that's fit for purpose and is large enough for 1 sitting. The village badly needs some kind of youth club and perhaps one of the School buildings could be kept in mind for this sort of use and perhaps other types of evening classes/events? Providing people are prepared to run one. The local Community Centre won't permit a youth club to be run in their venue and there is nowhere else where a permanent facility could be set up.
- The breakfast and afterschool club. Working parents need support in community to be able to work to them support PTA fundraising etc and lack of certain childcare in area after or before school hours inhibit this.
- Not sure.

Questionnaires were provided at the drop-in session, the feedback is as follows:

Option 1 - Catchment areas of the schools are reviewed to determine whether this would increase the occupancy at both schools and ensure their future sustainability. If sustainable, refurbish Logiealmond Primary School and Methven Primary School to improve condition at both schools.

Comments

- In need of refurbishment anyway Methven and numbers of pupils would justify the improvement, along with parking issues.

Questionnaires were provided at the drop-in session, the feedback is as follows:

Option 2 - Reduce capacity of Methven Primary School through a review of accommodation – including refurbishment of the school to improve condition. Logiealmond Primary School remains open – refurbish the school to improve condition.

Comments

- Methven School is vital to the village community. Type of housing that was built was never going to increase capacity of school roll (limited affordability). Logiealmond children are often affected by weather conditions not allowing them to attend secondary school so this would be similar outcome for travel to Methven being cancelled. Cost of bus travel and age of children has to be taken into consideration also. Kindergarten should not to be taken into the equation and same for playgroup as both are closed.

Questionnaires were provided at the drop-in session, the feedback is as follows:

Option 3 - Mothball Logiealmond Primary School and move pupils to Methven Primary School – refurbish the school to improve condition.

Comments

- Any refurbishment to Methven School would be a great benefit to the future of the school and we would fully support.

Questionnaires were provided at the drop-in session, the feedback is as follows:

Option 4 - Reduce capacity of Methven Primary School through a review of accommodation – including refurbishment of the school to improve condition. Consider closing Logiealmond Primary School and move pupils to Methven Primary School.

Comments

There were no comments made on Option 4 on the questionnaires completed at the drop-in session.

Questionnaires were provided at the drop-in session, the feedback is as follows:

Option 5 - Consider closing Logiealmond Primary School and move pupils to Methven Primary School – refurbish Methven Primary School.

Comments

There were no comments made on Option 5 on the questionnaires completed at the drop-in session.

Questionnaires were provided at the drop-in session, the feedback is as follows:

Are there any other options/proposals that have not been considered?

Comments

- Any help in providing wrap around care at Methven Primary would be of great benefit.

Community Drop-In Session

Drop-in session ran from 3pm – 6:45pm on 28 September 2017

- Twenty seven attendees at the session
- 55% (15) of attendees were parents
- 7% (2) were classed themselves as other family members
- 30% (8) were neighbours/residents
- 4% (1) was classed as other
- 4% (1) was from the Press

Comments received at the drop-in session

Option 1 - Catchment areas of the schools are reviewed to determine whether this would increase the occupancy at both schools and ensure their future sustainability. If sustainable, refurbish Logiealmond Primary School and Methven Primary School to improve condition at both schools.

Comments

- Quality of education is important – accessibility for workers in the area is also an advantage. Sustainability could be a problem.
- It is very important that Methven PS is refurbished asap as at present it is unfit for purpose, which cannot be to the requirements of meeting what is best for the pupils.
- Could be possibly short sighted but would depend on future building plans whether this option is sustainable.
- From a business point of view, this may not be sustainable and could be a further drain on resources.
- Why put kids from other areas, to schools out of their catchment area. If children went to own catchment area, then NO school would need to Close.

Comments received at the drop-in session

Option 2 - Reduce capacity of Methven Primary School through a review of accommodation – including refurbishment of the school to improve condition. Logiealmond Primary School remains open – refurbish the school to improve condition.

Comments

- This would be my preferred option as it's sensible to keep such young children in the local areas. Removing rooms from Methven could remove options for additional support rooms/sensory.
- I think a refurbishment is a good idea but often unoccupied rooms are 'gems' to schools who use them as libraries, breakout/sensory rooms etc so I'd be reluctant to suggest getting rid of rooms. – preferred option.
- This option is preferred, schools remain open, both communities benefit from this and both schools have their condition improved. A winner all the way.
- Keep both schools open and refurbish.
- Always best if at all possible to accommodate children locally. Both schools need money spent on them – good use of public funds.
- Great option keep both schools open.
- Preferred option.
- This is my preferred option as people attend Logiealmond because that's where they want to be. I'd love to see both schools kept open and upgrade them.
- This is a good option, although I have concerns that the front annex buildings may be way beyond economic repair. I agree with reduced capacity, build new hall and keep Logiealmond open. Preferred.

Comments received at the drop-in session

Option 3 - Mothball Logiealmond Primary School and move pupils to Methven Primary School – refurbish the school to improve condition.

Comments

- Refurbish Methven and close Logiealmond as it is so small the costs are very high per capita.
- This school needs money put into it, to refurbish.
- Good option but will depend on whether logistics work for the children who are furthest from Methven School. No child should have to travel more than 15-20 minutes to get to school.
- Wouldn't Logiealmond pupils benefit from attending Methven? Larger school, more friends, less daunting when moving to secondary.
- Good idea, school needs to be refurbished.
- Methven school definitely needs money spent on it especially for children's safety.
- Unfair to local pupils and parents to mothball or close Logiealmond.
- Cannot see council getting agreement from Logiealmond parents to close/or mothball the school. Defo refurbish Methven P.S.
- Unfair to expect 5/6/7 yr. old children to travel too far to attend school, but again this depends on sustainability. Methven definitely does need refurbished!

Comments received at the drop-in session

Option 4 - Reduce capacity of Methven Primary School through a review of accommodation – including refurbishment of the school to improve condition. Consider closing Logiealmond Primary School and move pupils to Methven Primary School.

Comments

- Whilst it would be sad to see Logiealmond close, surely it must be difficult to sustain a school with so few kids. Many kids from Logiealmond catchment come to Methven anyway. I'm sure we'd welcome more.
- Similar to option 2. Refurbishment needed at dining hall and gym hall.
- Good idea as would increase occupancy at Methven and school buildings needs to be updated.
- Would be fantastic to see Methven school refurbished. The gym hall and kindergarten and dining hall in dire need of repair.
- If possible it'd be best to try and keep both schools open.
- Although I think this option will be used I am of the opinion that it is wrong as every effort should be made to keep Logiealmond open.
- I can see the thought process behind this option but I feel it unfair to force parents to have to put their children to a school which they did not choose.
- I think both schools should be kept open.
- Similar to option 2. Methven needs refurbished. Depends on future sustainability of Logiealmond.

Comments received at the drop-in session

Option 5 - Consider closing Logiealmond Primary School and move pupils to Methven Primary School – refurbish Methven Primary School.

Comments

- Think every effort should be made to keep both schools open.
- Refurbishment needed but closing Logiealmond might have negative effects to local community and needs to be looked at.
- This option not a good idea.
- Could cause both communities to become fragmented.
- This option should not be decided upon. Closing small rural schools is a backward step.

Comments received at the drop-in session

Are there any other options/proposals that have not been considered?

Comments

- Bigger dinner hall for Methven.
- Methven has quite a big footprint – could think about an all-weather sports area.
- After school club, holidays, breakfast club.
- New gym and dining hall, demolish all old external annex and use school for more for out of school activities; consider breakfast and after school club as many parents need it. I believe only 2 childminders in Methven.
- Potential to increase numbers at Logiealmond by opening up a special/additional needs class?
- I think the nursery would benefit from free-flow garden access that they could use throughout the nursery session rather than the stand alone garden they have at present.
- Breakfast club/afterschool's club would be very useful for working parents.
- Breakfast and after school clubs would be beneficial. Possibly use gym hall for after school club or stand-alone activities. The nursery could have free flowing play to an outdoor space, to encourage choice and learning.

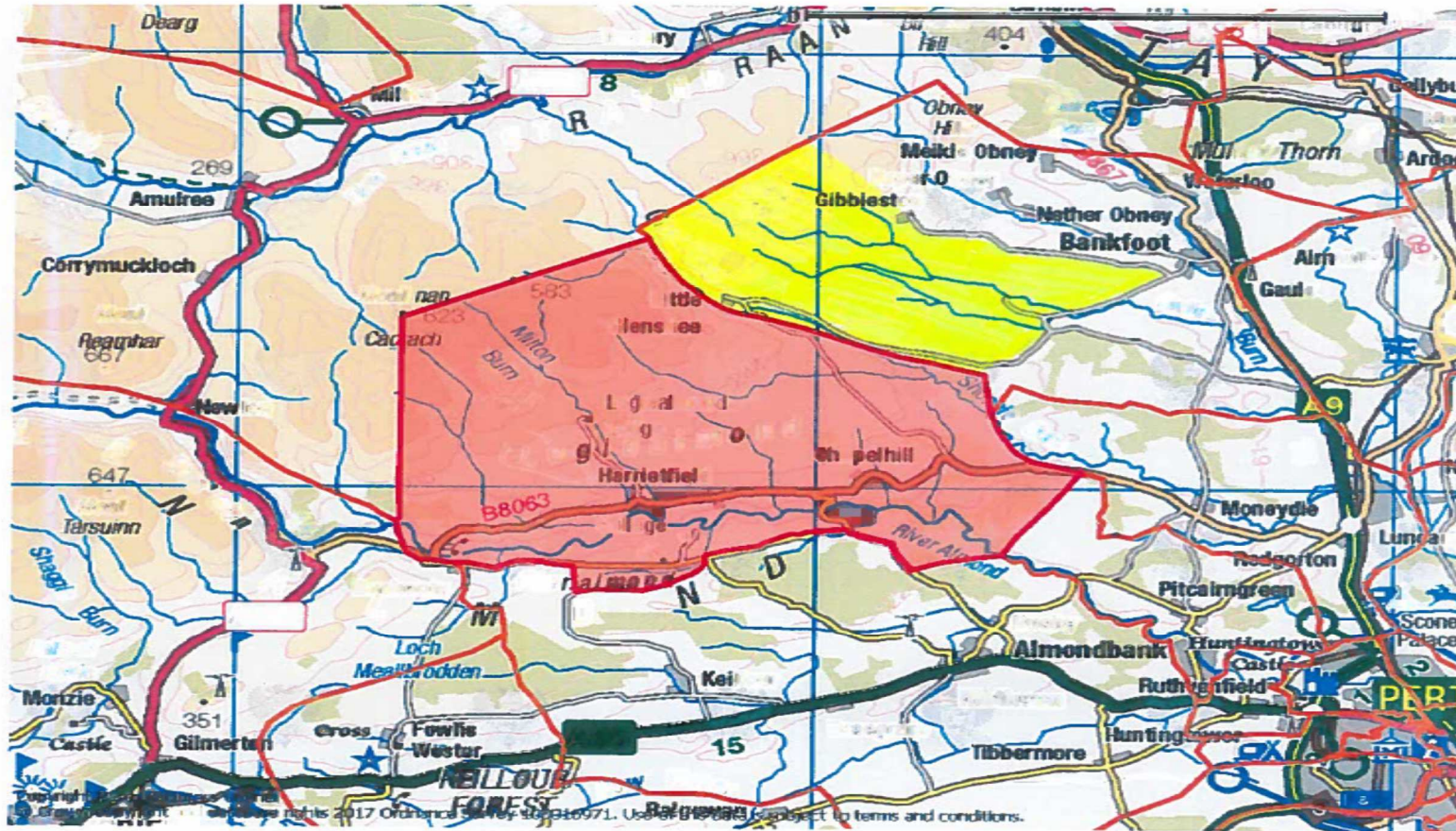
Comments received at the drop-in session

How would you describe the community within Methven and what are your thoughts on Methven Primary School as part of the community?

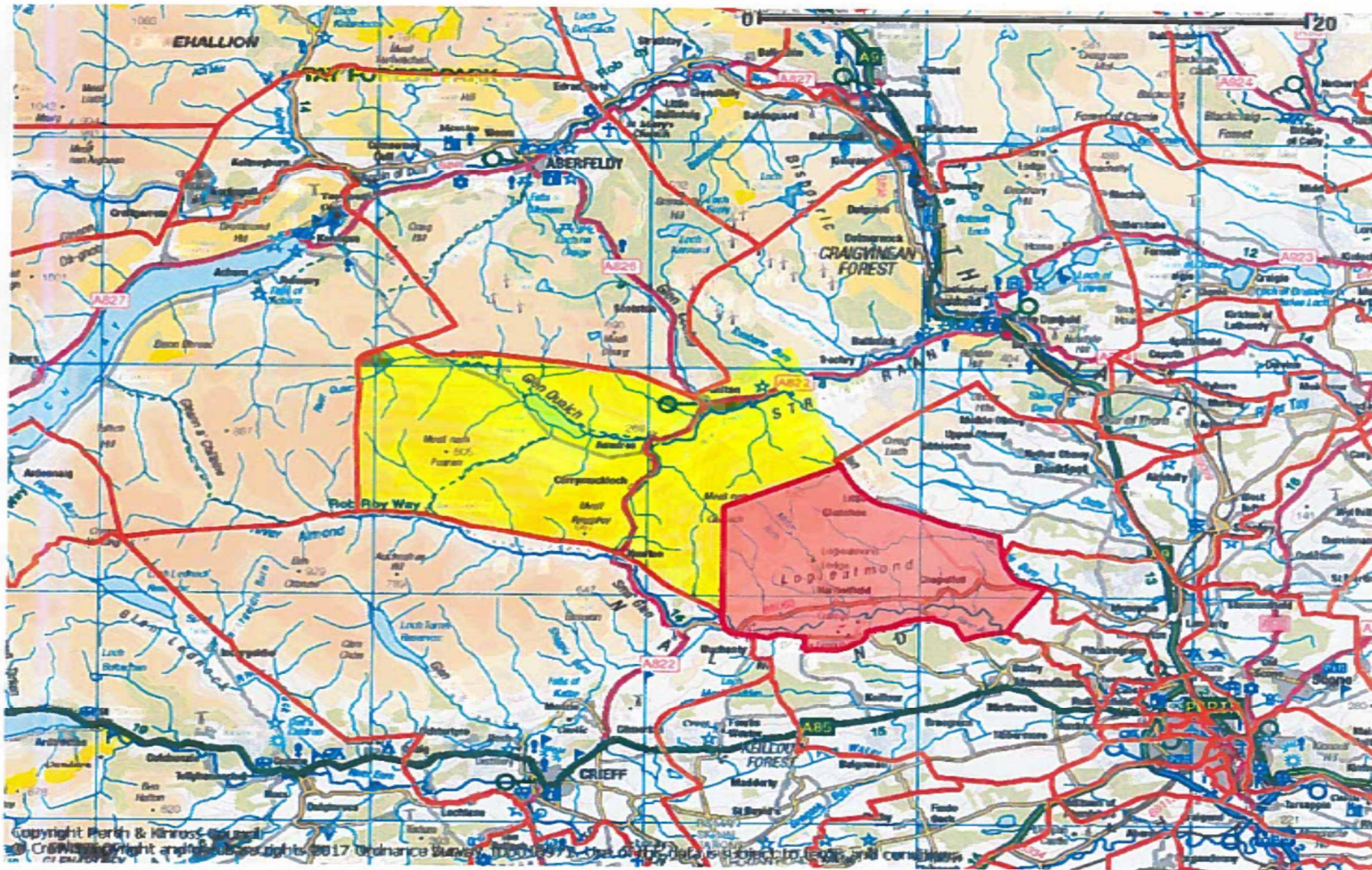
Comments

- This school involve the children in local happenings.
- School is a hugely important part of the community. It's where children and their parents can meet people/make friends. "Heart of the community".
- I think Methven is quite a close community and the school plays a big part in that. People, who perhaps otherwise would not engage in events in the community, do so when they have a link to the school (relative, neighbour etc).
- I live in one of the outer catchment areas for Methven PS so feel that I only really come to Methven for school. So very important.
- School seems to play an important part in the community. It always has (I'm a former pupil). I hope for this to continue, it encourages good social skills from an early age.
- Methven school is a good school not too big all children know each other and big part of the community.
- Methven School is a big part of the community – it can share resources with the community and vice versa. Nice sized classes, good opportunity for 1-1 with teaching staff, picking up problems quickly.
- Big part of local communities, and I feel it could be even more so if used for after school club, evening activities and possible breakfast club.

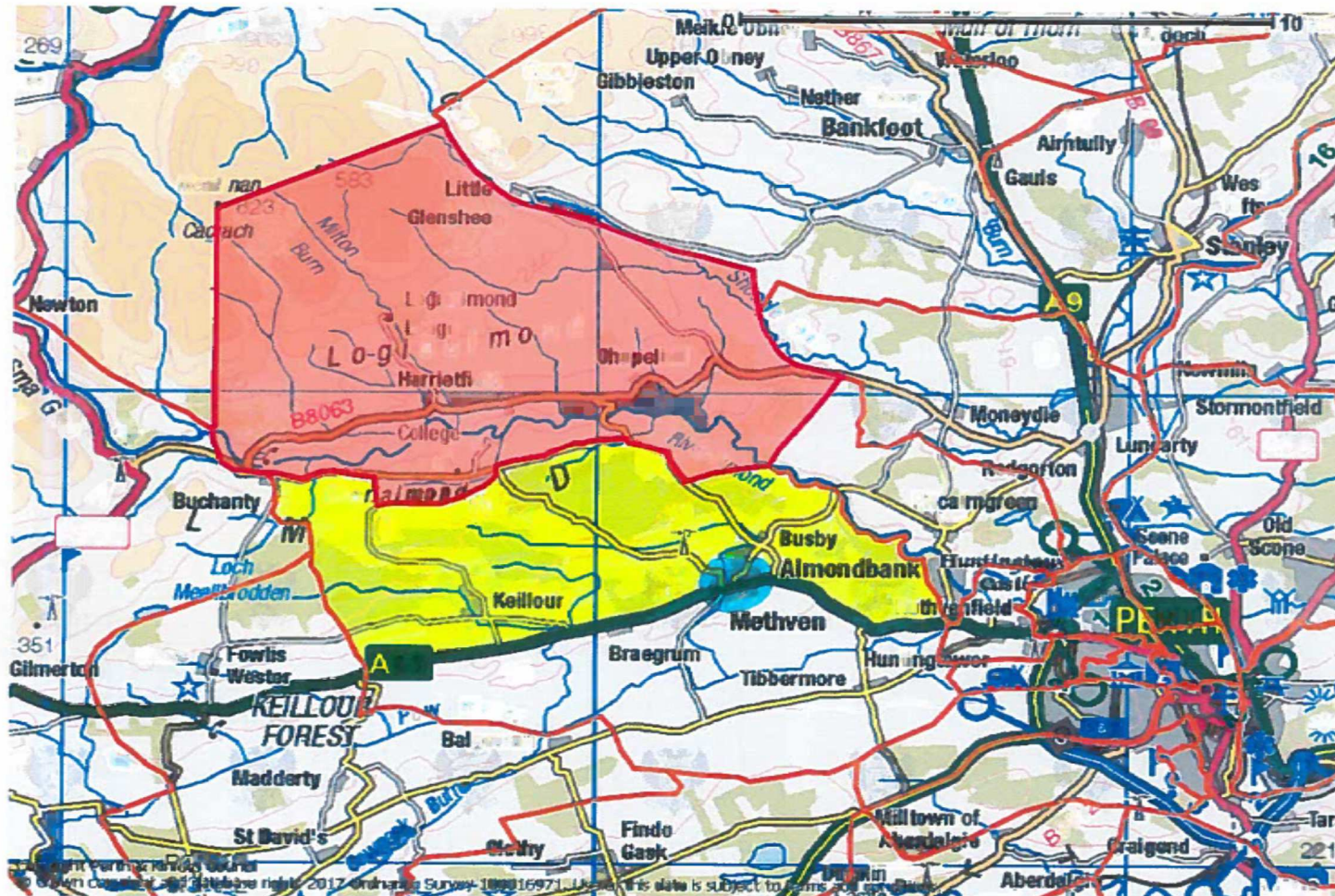
Moving existing Logiealmond Primary School boundary into Auchtergaven Primary School catchment area



Moving existing Logiealmond Primary School boundary into Royal School of Dunkeld Primary School catchment area



Moving existing Logiealmond Primary School boundary into Methven Primary School catchment area



Appendix 3

Catchment Area Proposed	Other School Catchment Impacted	Primary School pupils in area	Pre-5s in area	Analysis
<p>Moving existing Logiealmond Primary School catchment boundary into Auchtergaven Primary School catchment.</p> <p>See Appendix 2a – area highlighted in yellow.</p>	<p>Auchtergaven Primary School</p>	<p>< 5</p>	<p>< 5</p>	<p>The majority of pupils in the Auchtergaven Primary School catchment area live in Bankfoot within close proximity of the school.</p> <p>Changing the catchment boundary to include this additional area would result in fewer than 5 additional primary school pupils for Logiealmond Primary School. There are less than 5 pre-school age children living within this area.</p> <p>Should the existing Logiealmond Primary School catchment area include the proposed Auchtergaven Primary School area the travel distance for pupils who would live furthest from Logiealmond Primary School would be approximately 11 miles from the school with a travel time of approximately 24 minutes.</p> <p>The same pupils are currently approximately 1.3 miles from Auchtergaven Primary School and have a travel time of approximately 4 minutes.</p> <p>The fastest route to the school would also take these pupils through Luncarty Primary School catchment area.</p> <p>Moving this single boundary would not be sufficient to make Logiealmond Primary School sustainable.</p>

Catchment Area Proposed	Other School Catchment Impacted	Primary School pupils in area	Pre-5s in area	Analysis
				Furthermore it would be detrimental to some pupils to travel to Logiealmond Primary School due to the travel distance and time.
<p>Moving the existing Logiealmond Primary School catchment boundary into Royal School of Dunkeld catchment.</p> <p>See Appendix 2b – area highlighted in yellow.</p>	Royal School of Dunkeld	12	7	<p>The area to the west of the Royal School of Dunkeld Primary School catchment area is rural and sparsely populated.</p> <p>Changing the catchment boundary to include this area would result in 12 additional pupils into Logiealmond Primary School. These pupils all currently attend their catchment school. There are 7 pre-school age children living in this area.</p> <p>Should this option progress pupils living furthest to the west of the catchment would have a travel distance of approximately 18 miles and a travel time of approximately 35 minutes to Logiealmond Primary School.</p> <p>They currently have a travel distance of approximately 16 miles and journey time of approximately 28 minutes.</p> <p>Pupils in the north of this area near Trochry would have a travel distance of approximately 18 miles and a journey time of approximately 31 minutes to Logiealmond Primary School.</p> <p>Pupils in this area currently have a travel distance of approximately 4 miles and journey time of approximately 10 minutes to Royal School of Dunkeld Primary School.</p> <p>Moving this single boundary would not be sufficient to make Logiealmond Primary School sustainable.</p>

Catchment Area Proposed	Other School Catchment Impacted	Primary School pupils in area	Pre-5s in area	Analysis
				Furthermore it would be detrimental to some pupils to travel to Logiealmond Primary School due to the travel distance and time.
<p>Moving existing Logiealmond Primary School catchment boundary south into Methven Primary School catchment area.</p> <p>See Appendix 2c – area highlighted in yellow.</p>	Methven Primary School	10	< 5	<p>If the Logiealmond Primary School catchment area was changed to include the area highlighted in yellow this would result in an additional 10 pupils moving into Logiealmond Primary School.</p> <p>Not all pupils in the area highlighted in yellow attend their catchment school and therefore may choose not to attend Logiealmond Primary School.</p> <p>There are less than 5 pre-school age children living in this area.</p> <p>The area highlighted in blue has not been included as this is a densely populated area with the majority of pupils attending Methven Primary School.</p> <p>If the option of including the area highlighted in yellow progressed, the longest travel distance would be approximately 5 miles and a journey time of approximately 10 minutes to travel to Logiealmond Primary School.</p> <p>With this option the travel distance and time may be reduced for approximately 2 pupils. The travel distance and time would be detrimental for the rest of the pupils living in this area due to an increase in travel distance and time.</p> <p>Moving this single boundary would not be sufficient to make Logiealmond Primary School sustainable.</p>

Appendix 4

Name of School Logiealmond Primary School	Costs for full financial year (2017-18)	Additional financial impact on receiving school [Methven]	Annual recurring savings (column 2 minus column 3)
School costs			
<i>Employee costs -</i>			
teaching staff	£ 75,897.00	£ -	£ 75,897.00
support staff	£ 19,886.00	£ -	£ 19,886.00
teaching staff training (CPD etc)	£ 475.00	£ -	£ 475.00
Supply costs	£ 1,324.00	£ -	£ 1,324.00
Slippage Target	-£ 2,543.00	£ -	-£ 2,543.00
<i>Building costs:</i>			
non domestic rates	£ -	£ -	£ -
water & sewerage charges	£ 1,222.00	£ -	£ 1,222.00
energy costs	£ 5,485.00	£ -	£ 5,485.00
cleaning (contract or inhouse)	£ 4,212.00	£ -	£ 4,212.00
building repair & maintenance	£ 3,182.00	£ -	£ 3,182.00
grounds maintenance	£ 162.00	£ -	£ 162.00
other	£ 328.00	£ -	£ 328.00
<i>School operational costs:</i>			
learning materials	£ 972.00	£ 579.60	£ 392.40

<i>Transport costs: note 3</i>			
home to school	£ 24,259.20	£ 31,859.20	-£ 7,600.00
other pupil transport costs	£ 2,198.00	£ -	£ 2,198.00
staff travel	£ 128.00	£ -	£ 128.00
SCHOOL COSTS SUB-TOTAL	£ 137,187.20	£ 32,438.80	£ 104,748.40
Income:			
Other	£ -		£ -
SCHOOL INCOME SUB-TOTAL	£ -		£ -
TOTAL COSTS MINUS INCOME FOR SCHOOL	£ 137,187.20	£ 32,438.80	£ 104,748.40

UNIT COST PER PUPIL PER YEAR	£ 9,799.09	£ 2,317.06	£ 7,482.03
Annual Property costs incurred (moth-balling) until disposal			
property insurance	£ -		
non domestic rates	£ -		
water & sewerage charges	£ 150.00		
energy costs	£ 1,000.00		
cleaning (contract or inhouse)	£ -		
security costs	£ -		
building repair & maintenance	£ -		
grounds maintenance	£ -		
other	£ -		
TOTAL ANNUAL COST UNTIL DISPOSAL	£ 1,150.00		

Impact on GAE	
based on pupils going to Methven PS	£ 43,960.00
GAE IMPACT	£ 43,960.00

Notes

1. The total costs incurred for teaching staff (row 5) and support staff (row 6) are required to be included. Column 2 should include the current costs for a full financial year for the school proposed for closure, and column 3 should include the *additional* cost to the receiving school as a result of staff transferring.

For teaching staff, this should include regular teachers, itinerant teachers, learning support teaching staff and special education (ASN) staff. Itinerant teaching staff includes central support services such as English as additional language support, hearing, visually impaired services, educational psychology services.

For support staff, this should include classroom assistants, administration staff and janitorial staff.

For all staff the costs entered should include salary, NI and pension costs.

If the school proposed for closure has less than 3 staff members, then the cumulative staff costs only should be given in row 5 (for both teaching and support staff), so as to avoid possible disclosure of individual salaries.

Training costs should be identified separately in rows 7 and 8.

2. Supply costs to cover teaching and support staff. This may be held in a central budget, be devolved or shared across the budgets.

3. 'Home to school' pupil transport costs should include those school transport costs incurred in accordance with Council policy. 'Other pupil transport costs' will cover costs incurred for the transport of pupils for activities such as swimming etc

4. Row 30 of column 3 should include the additional transport costs related to the increased home to school transport arrangements that are put in place in accordance with Council policy. This figure is therefore likely to be considerably higher than current costs.

5. This table is to capture the impact on the revenue support grant as a result of changes to GAE. Impact on GAE should consider the issues covered in the GAE section of the guidance document that accompany this template.

6. Facilities management costs will include costs related to caretaking, janitorial and security.

7. The capital costs for the receiving school should be taken across the life cycle of the school in line with the life expectancy of that school. The capital costs for the school proposed for closure should be taken across the same life cycle period.

Name of School Methven Primary School	Costs for full financial year (2017-18)	Additional financial impact on receiving school [N/A]	Annual recurring savings (column 2 minus column 3)
School costs			
<i>Employee costs -</i>			
teaching staff	£ 360,332.00	£ -	£ 360,332.00
support staff	£ 51,266.00	£ -	£ 51,266.00
teaching staff training (CPD etc)	£ 375.00	£ -	£ 375.00
Supply costs	£ 5,196.00	£ -	£ 5,196.00
Slippage Target	-£ 11,809.00	£ -	-£ 11,809.00
<i>Building costs:</i>			
non domestic rates	£ 27,727.00	£ -	£ 27,727.00
water & sewerage charges	£ 2,277.00	£ -	£ 2,277.00
energy costs	£ 19,404.00	£ -	£ 19,404.00
cleaning (contract or inhouse)	£ 22,678.00	£ -	£ 22,678.00
building repair & maintenance	£ 77,877.00	£ -	£ 77,877.00
grounds maintenance	£ 1,114.00	£ -	£ 1,114.00
other	£ 1,694.00	£ -	£ 1,694.00
<i>School operational costs:</i>			
learning materials	£ 5,058.00		£ 5,058.00
<i>Transport costs: note 3</i>			

home to school			£ -
other pupil transport costs	£ -	£ -	£ -
staff travel	£ 532.00	£ -	£ 532.00
SCHOOL COSTS SUB-TOTAL	£ 563,721.00	£ -	£ 563,721.00
Income:			
Other	£ -		£ -
SCHOOL INCOME SUB-TOTAL	£ -		£ -
TOTAL COSTS MINUS INCOME FOR SCHOOL	£ 563,721.00	£ -	£ 563,721.00
UNIT COST PER PUPIL PER YEAR	£ 4,777.30	£ -	£ 4,777.30

Notes

1. The total costs incurred for teaching staff (row 5) and support staff (row 6) are required to be included. Column 2 should include the current costs for a full financial year for the school proposed for closure, and column 3 should include the *additional* cost to the receiving school as a result of staff transferring.

For teaching staff, this should include regular teachers, itinerant teachers, learning support teaching staff and special education (ASN) staff. Itinerant teaching staff includes central support services such as English as additional language support, hearing, visually impaired services, educational psychology services.

For support staff, this should include classroom assistants, administration staff and janitorial staff.

For all staff the costs entered should include salary, NI and pension costs.

If the school proposed for closure has less than 3 staff members, then the cumulative staff costs only should be given in row 5 (for both teaching and support staff), so as to avoid possible disclosure of individual salaries.

Training costs should be identified separately in rows 7 and 8.

2. Supply costs to cover teaching and support staff. This may be held in a central budget, be devolved or shared across the budgets.

3. 'Home to school' pupil transport costs should include those school transport costs incurred in accordance with Council policy. 'Other pupil transport costs' will cover costs incurred for the transport of pupils for activities such as swimming etc

4. Row 30 of column 3 should include the additional transport costs related to the increased home to school transport arrangements that are put in place in accordance with Council policy. This figure is therefore likely to be considerably higher than current costs.

5. This table is to capture the impact on the revenue support grant as a result of changes to GAE. Impact on GAE should consider the issues covered in the GAE section of the guidance document that accompany this template.

6. Facilities management costs will include costs related to caretaking, janitorial and security.

7. The capital costs for the receiving school should be taken across the life cycle of the school in line with the life expectancy of that school. The capital costs for the school proposed for closure should be taken across the same life cycle period.

Appendix 5

The Scottish Index of Multiple Deprivation (SIMD) identifies small area concentrations of multiple deprivation across all of Scotland in a consistent way. It allows effective targeting of policies and funding where the aim is to wholly or partly tackle or take account of area concentrations of multiple deprivation. SIMD provides information to help improve the understanding about the outcomes and circumstances of people living in the most deprived areas in Scotland.

SIMD ranks to quintiles, deciles and vigintiles. Quintiles split data zones into 5 groups, each containing 20% of data zones. The lower the quintile the more deprived the area.

ACORN is a well-developed segmentation tool which categorises the UK's population into demographic types. Acorn segments households, postcodes and neighbourhoods into 6 categories, 18 groups and 62 types, based on a range of different data collected in many ways.

ACORN is used to understand life and living conditions, lifestyles, behaviours and attitudes and can therefore help inform the public service needs of neighbourhoods and households.

There are 5 categories ACORN reports on; Category 1 Affluent Achievers, Category 2 Rising Prosperity, Category 3 Comfortable Communities, Category 4 Financially Stretched and Category 5 Urban Adversity.

Category 5 indicates the level of deprivation within an area.

SIMD and ACORN are based on address.