

Appendix A

PERTH AND KINROSS COUNCIL
EDUCATION AND CHILDREN'S SERVICES
OPTIONS APPRAISAL REPORT
ABERNYTE PRIMARY SCHOOL



1. Introduction

The Council's Corporate Plan identifies the vision of *'a confident and ambitious Perth and Kinross with a strong identity and clear outcomes that everyone works together to achieve. Our area will be vibrant and successful; a safe secure and healthy environment; and a place where people and communities are nurtured and supported'*.

This strategic approach embraces the vision for our area, our communities and our people as outlined in the Corporate Plan. Our key service priorities support the delivery of our commitments in the Community Planning Partnership's Single Outcome Agreement and Corporate Plan, helping Education and Children's Services to focus on the local outcomes that will achieve meaningful improvements for the area, our local communities and our citizens.

Councils, as Education Authorities, have a statutory duty in terms of the Education (Scotland) Act 1980 to make adequate and efficient provision of school education across their entire area for the current school population and future pattern of demand.

Councils also have a statutory responsibility in terms of the Local Government in Scotland Act 2003 to achieve best value.

The school estate is a significant and valuable asset to the communities of Perth and Kinross. Between 2018 and 2028, the Council will invest £178m in the school estate. This funding supports a wide range of projects including the replacement of Perth High School and Blairgowrie Recreation Centre. A substantial upgrade programme for primary and secondary schools is also being funded. In addition the new £32.5m Bertha Park High School will open in August 2019.

The School Estate Strategy ([Report No. 12/370 refers](#)) sets out the Council's aspirations for our schools, and in particular the high value we place on learning, through our vision for well designed, maintained and managed schools. The [School Estate Management Plan](#) details how we plan to deliver the strategy.

It is important, in light of the significant investment and cost associated with the school estate, that it is managed in an efficient and effective manner, and that the priorities which are addressed meet the wider strategic objectives of the Council and the needs of our communities.

2. Background

2.1 Transformation

There are significant challenges for managing the school estate over the coming years. These include changing demographics including population growth, house building in certain locations and reduction in population in other areas. This has led to an 'imbalance' in occupation of the school estate, with roll pressures in some urban schools and under-occupation in some rural schools.

There is also ongoing deterioration in building infrastructure, pressure on planned maintenance budgets, increasing revenue costs and the expansion of funded Early

Learning and Childcare which are challenging in terms of funding and maintenance of the school estate.

The Council's Transformation Strategy 2015-2020 'Building Ambition' and Organisational Development Framework were approved by Council on 1 July 2015 ([Report No. 15/292](#) refers). Together they detail how Perth and Kinross Council will deliver transformation over the next five years. Accompanying the strategy is a programme of major reviews which are considered to be key drivers and enablers of transformation across the organisation.

As part of the Council's Transformation Programme 2015-2020, a review of the school estate was approved. On 24 August 2016, the Council approved the report "Transformation – School Estate Review" ([Report No. 16/347](#) refers). This report proposed principles to be used to prioritise investment and as a basis for a high level review of the school estate. The purpose of the transformation review is to support the delivery of better outcomes for all of our young people through more effective use and management of the school estate.

2.2 Basis of review

The principles approved as a basis for the review are:

- (i) Every school should be rated as A or B ie at least satisfactory for condition and suitability;
- (ii) Schools should have an occupancy rate where possible greater than 60% of the capacity and ideally should be operating at between 80% and 100% capacity; and
- (iii) Life expired buildings within the school estate should be prioritised for replacement.

2.3 Options Appraisal

On 21 March 2018 an Options Appraisal was submitted to Lifelong Learning Committee of the Council ([Report No. 18/86](#) refers). The recommendation of the Options Appraisal was to proceed with a further assessment of the option to change the catchment area of the school to include the area to the north of the A90 within the existing Inchtute Primary School catchment. This recommendation was approved and Lifelong Learning Committee instructed the Executive Director (Education and Children's Services) to update the Options Appraisal following that further assessment and bring that back to a future meeting of the Committee.

The purpose of the further assessment was to ascertain whether a proposed change in catchment area would increase pupil numbers and therefore create a sustainable pupil roll for Abernyte Primary School.

This is the updated options appraisal for Abernyte Primary School, which includes the outcome of the further assessment of the proposed catchment area and updated recommendations for the future of the School.

2.4 Inclusion of Abernyte Primary School

On 2 November 2016, the Council approved the report “Securing the Future of the School Estate – Next Steps” ([Report No. 16/485 refers](#)). This report detailed the outcome of the high level review and proposed to proceed with further work on the schools which did not meet the suitability, condition or occupancy principles.

In this report, it was agreed that an Options Appraisal should be carried out on Abernyte Primary School due to under-occupancy.

At that time, the school had a pupil roll of 8 (School Census¹ 2015) and an approved capacity of 44 at the same time giving an occupancy level of 18%.

Abernyte Primary School had 5 pupils as at the School Census 2017. The school roll is currently 6². As detailed in table 4, section 4.2, the projected roll for August 2018 is 6 giving an occupancy level of 14%.

2.5 Legislation

The Schools (Consultation) (Scotland) Act 2010 provides a strong, accountable statutory consultation process that local authorities must apply to their handling of all proposals for school closures and other major changes to schools. These consultation processes are expected to be robust, open, transparent and fair, and seen to be so. They are also expected to be consistent across Scotland.

The 2010 Act makes special arrangements in relation to rural schools, establishing a presumption against closure of rural schools. The result of this is that education authorities must have special regard to a number of factors before formulating a proposal to close a rural school and in consulting on and reaching a decision as to whether to implement a rural school closure proposal. These factors are:

- Effect on the Community;
- Effect on Travel Arrangements; and
- Educational Benefits

The duties are outlined in the [Schools \(Consultation\) \(Scotland\) Act 2010](#) and the accompanying [Statutory Guidance](#).

In order to ensure a robust approach to each Option Appraisal carried out under the School Estate Review, the factors that require to be considered as part of a rural school closure will be adopted in all cases.

The Education (Scotland) Act 2016 amends the Standards in Scotland’s Schools Act 2000 by adding in new duties to address inequality of outcome. These duties apply in different ways to both Scottish Ministers and Education Authorities.

Where the Education Authority is making or implementing strategic decisions about school education, it is required to have due regard to the need to carry out its

¹ An annual pupil census in publicly funded schools in Scotland is carried out every year for publication by the Scottish Government. This usually takes place in September.

² School Roll as at 31 July 2018

functions in a way which is designed to reduce inequalities of outcome. This is particularly directed in the Act towards pupils who experience those inequalities through socio-economic disadvantage, but there is also a power to extend the range of pupils who are covered by this duty.

In addition, the [Community Empowerment \(Scotland\) Act 2015](#) sets out a new right for community organisations to request the transfer of local assets into local community ownership/management. Public bodies, including Councils, must consider such requests and respond within a reasonable timescale to them.

2.6 Community Engagement

The Statutory Guidance promotes informal consultation or “pre consultation” with communities regarding a proposal before a formal 2010 Act Proposal Paper is formulated. The Statutory Guidance recommends ‘early engagement with the local community’ with a view to:

- Establishing possible alternatives;
- Information gathering and sharing in advance of a statutory consultation; and
- Engaging and empowering communities to understand and help shape the proposals that affect them.

Details of the feedback from the community sessions are contained in Appendix 1. Relevant feedback is also referred to in the later sections of this document, to provide the community view of the impact of the options. The feedback which is detailed in the Appendix has been issued to the Parent Council, Headteacher and Community Council and published on the Council website.

The key themes in the feedback from Abernyte Primary School were:

- Doing nothing is not the answer;
- A catchment review could increase the school roll and make the school sustainable;
- The school is important to the community;
- The school is a good school and benefits the pupils; and
- A nursery and/or after school club would encourage parents to enrol pupils in Abernyte.

3 Abernyte and the Local Area

3.1 Location of School

Abernyte Primary School is located within the village of Abernyte. Abernyte lies just off the B953, approximately 6 minutes driving time from the A90 between Perth and Dundee.

The school lies approximately 3.4 miles³ from Inchtute Primary School and approximately 4.4 miles from Longforgan Primary School.

³ All approximate distances sourced from Google Maps

The Scottish Government's Rural School List 2017 classifies Abernyte Primary School as "accessible rural" school under Section 14 of the Schools (Consultation) (Scotland) Act 2010. The classification is based on two main criteria, settlement size and accessibility based on drive time. For Abernyte Primary School the classification criteria are "areas with a population of less than 3,000 people and within a 30 minute drive time of a settlement of 10,000 or more" (Source: Scottish Government Rural School List 2017).

3.2 Local Area and Community

Abernyte is within the Carse of Gowrie ward of Perth and Kinross Council. The Carse of Gowrie stretches for approximately 20 miles (32 km) along the north shore of the Firth of Tay between Perth and Dundee.

Abernyte has a church, which is located approximately a mile from the school. The church is linked with 3 other Carse of Gowrie churches; Kinnaird, Inchturre and Longforgan. Abernyte Church is available for use by the community.

Attractions in the area include the Scottish Antique & Arts Centre, a micro-brewery and local walks. Visitors to the area can be accommodated at Milton Farm Lodges as well as various holiday cottages in the area.

The Abernyte Community Interest Company (ACIC) was formed in 2006 to represent the community of Abernyte. They amalgamated in 2015 with the local Heritage Group. The ACIC organise and host events in and around Abernyte, for example: afternoon events at the Millennium Walk and the Abernyte Harvest Festival. Other events that occur in the area are the annual Parish Walk and the French exchange (through the Inchturre Area Twinning Association). The Abernyte community set up an 'Abernyte Heating Oil Collective' (AHOC) in 2010. Since it was set-up the group has over 40 members ordering over 100,000 litres of their heating oil per year. The ACIC owns the large playing field that lies next to the school. This playing field is used for various activities by the community and the school.

The community were asked to describe the community of Abernyte at the engagement session. A few of the comments are below:

- *Very strong and vibrant community. We all know each other. Many activities together at all levels. A sense of 'pride' exists in the area;*
- *The community revolves round the church and the school (the shop closed some years ago) we are a very active community and very supportive of the school – primarily for the children but also as a community building;*
- *Abernyte Primary is part of a very dynamic and creative village with many talented people. I am new to the village. I think this creative linkage could be developed massively to mutual advantage. It needs creative thinking and planning – and leading with expert council input, but the future to the whole area could be transformative, educationally, socially, culturally.*

3.3 Population

Data on children under 5 registered with GP practices living in the Abernyte catchment tends to support the comments made by the community in relation to the

number of families living in the catchment area which has remained low over a number of years.

	2009	2010	2011	2012	2013	2014	2015	2016	2017	2018
P1 aged pupils due to attend Abernyste Primary School	4	1	2	2	3	2	1	3	1	2

Table 1 – P1 aged pupils living in Abernyste Primary School catchment area

- *Very few new houses in area which mean not a lot of young families equals no children. Low school roll;*
- *Population of the village has aged & everybody moves here for life as it's a wonderful place to live. The young families left have now put children to other schools as the population is low – a change in the catchment area.*

3.4 Socio Economic Factors

The Council uses the Scottish Index of Multiple Deprivation (SIMD) and ACORN data to understand levels of deprivation across Perth and Kinross and also in individual schools. Both sets of data are based on address.

Appendix 2 explains SIMD and ACORN.

Abernyste Primary School does not receive Pupil Equity Funding (PEF). PEF is provided as part of the £750m Attainment Scotland Fund which will be invested over the current Parliamentary term to tackle the poverty related attainment gap.

There are no pupils attending Abernyste Primary School who are considered as coming from socio economically deprived households on the basis of SIMD and ACORN data.

3.5 Development, Housebuilding and Employment

The current Local Development Plan (LDP) was adopted in 2014 and the Council is required to keep it up to date and review it at a maximum of five year intervals.

The TAYplan sets out a hierarchical approach to directing new development to existing settlements and identifies Perth Core Area as the tier 1 settlement which should take the majority of new development.

There is no planned house building for the Abernyste area contained within the LDP or Housing Land Audit (HLA) 2017.

The Proposed Local Development Plan 2 (LDP2) was approved for consultation by Council on 22 November 2017. The aspiration is to have a final LDP to adopt by spring 2019. There are no changes proposed for Abernyste in LDP2.

Information received from Perth and Kinross Council Business Growth Team indicated the following in relation to business activities in the Abernyste area:

- The biggest local employer in Abernyste is the Scottish Antique & Arts Centre.

- The Taypack processing and manufacturing plant (47 employees) is based in nearby Inchtute.
- Abernyte micro-brewery started up around 2015 – it is of small scale.

There is no indication at this point of any significant changes to population as a result of business growth.

3.6 The School within the community

At the pre-consultation the community were asked to describe the community within Abernyte and their thoughts on Abernyte Primary School as part of the community. Some of the comments are as follows:

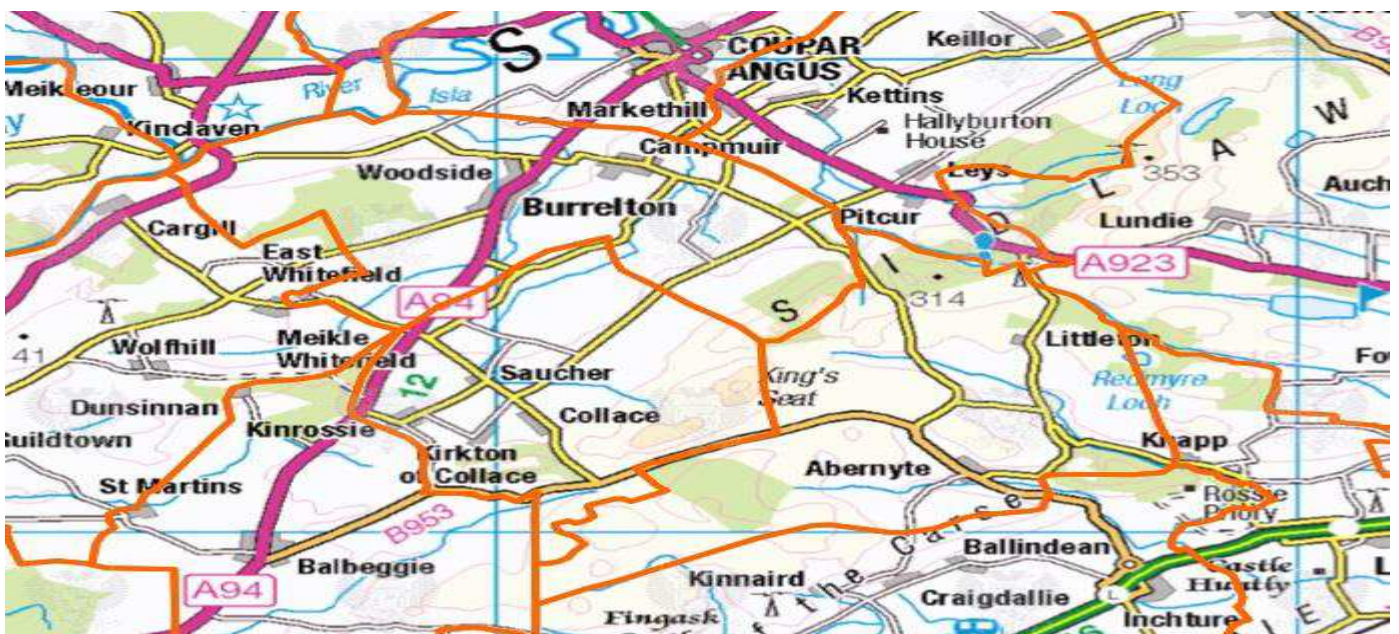
- *The school is a vibrant and essential part of Abernyte. Its community centres around the children who are the future;*
- *Many activities take place in the school bringing all the parents, grandparents etc together. Strengthening the community;*
- *Friendly community – school has declined in importance within the community – high input by Headteacher necessary to revive interest; and*
- *No village hall or other central meeting place. Inchtute village hall always booked. School bookings expensive*

The School invites local people into the school throughout the year for various events. The community have commented that there will be a negative impact on the community if the school was to close. The Wine Club and Heritage Group use the school out with school hours. The Wine Club meets monthly and the Heritage Group meets a number of times a year.

4. Abernyte Primary School

4.1 School Catchment

Abernyte Primary School serves all of Abernyte village and the surrounding area. The delineated catchment area is from within a boundary line from Outfield Farm, Balloleys Farm, Dundriven, Little Ballo, Lauriston Cottage Knapp and the Scottish Antiques & Arts Centre.



4.2 School Roll and Pupil Projections

The school roll at Abernyte Primary School has been decreasing since 2011. In 2011 there were no P1's registered at the school and in the last 3 years there have been no P1 intakes.

School Roll Pupil Numbers – Historic Data

(Based on Census)

Primary Classes	2007	2008	2009	2010	2011	2012	2013	2014	2015	2016	2017
Capacity	44	44	44	44	44	44	44	44	44	44	44
Pupils in school	22	21	16	21	15	15	14	11	8	7	5

Table 2: Historic school roll pupil numbers

At Census 2017, there were 11 primary school aged pupils living in the catchment area attending Perth and Kinross schools. Five of these pupils attended other PKC schools. There were no P1 pupils registered in the school.

	Pupil Census 2014	Pupil Census 2015	Pupil Census 2016	Pupil Census 2017
Primary School Aged Pupils living in Abernyte Primary School catchment attending PKC schools	13	11	10	11
Abernyte Primary School Catchment pupils attending other PKC schools	3	4	4	6
Abernyte Primary School Catchment pupils attending Abernyte Primary School	10	7	6	5
Pupils from other catchments attending Abernyte Primary School	1	1	1	0
Pupil Roll	11	8	7	5

Table 3: Attendance at Abernyte and other schools

The school roll at Census 2017 was 5. It is now currently 6 with the addition of 1 further non-catchment area pupil since Census 2017.

Future Pupil Projections

The methodology used for pupil projections allows Education and Children's Services to project a detailed year by year analysis for each school catchment.

The methodology applied for projecting future P1 intakes uses aggregated GP registration data. This anonymised data, sourced from the NHS, reflects children registered with a GP, within specific school catchment areas based on addresses.

P1 pupils included within the data received from the NHS do not always decide to attend their catchment school. This is primarily because parents make placing requests to other schools or elect to send their child to a denominational school.

As a result of these movements the P1 data is adjusted taking into consideration the movement of pupils in previous years. The adjusted data is the primary source of information for forward planning of the school estate.

It should be noted that due to the fluid nature of pupil movements within the estate, for a number of different reasons, predicting future years' schools rolls will not be exact. It is however accurate enough to provide valuable information on forward planning for the school estate.

School Roll – Future Pupil Numbers Projected

	2018/ 2019	2019/ 2020	2020/ 2021	2021/ 2022
Abernyte Capacity	44	44	44	44
Abernyte Roll	6	6	3	5

Table 4: Future pupil projections⁴

Included in table 4 is a total of 5 pupils who are due to start in P1 over the next 4 years. This information has not been adjusted to take into account pupil movements in previous years. If the information was adjusted the roll would be lower to reflect the fact that catchment pupils attend other schools.

P1 Pupil Numbers – Projected v's actual

	2011	2012	2013	2014	2015	2016	2017	2018
Abernyte Primary School P1 catchment pupil numbers that could attend the school	2	2	3	2	1	3	1	2
Abernyte Primary School Actual P1 pupil numbers	0	2	2	1	0	0	0	0

Table 5: Projected and actual P1 pupil numbers

In the past 8 years the projected number of P1 pupils to attend the school was 16, however only 5 registered at Abernyte Primary School over that period.

⁴ The projected school roll is based on actual P1 registrations as at 31 July 2018. Two pupils living within the Abernyte Primary School catchment area due to attend the school in August 2018 have made placing requests to attend other schools.

4.3 Building Information

Abernyte Primary School belongs to the Council and there are no restrictions on the title.

The school is on one level and is made up of 2 classrooms, a hall for dining and PE, toilets, resources room, school office/staff room and the kitchen. The classroom at the main entrance of the school can accommodate 20 pupils and the classroom at the rear of the school can accommodate 24 pupils.

A floor plan of the building can be found in Appendix 3.

Suitability is an assessment of the school as a whole, its buildings and its grounds and the impact they have on teaching and learning, leisure and social activities and the health and wellbeing of users. The overall suitability of the building is rated 'A' (performing well and operating efficiently).

A survey of the building was carried out in January 2017 to assess the current condition of the building. Condition is an assessment of the physical condition of the school and its grounds. The overall condition of the building is rated 'B' (Performing adequately but showing minor deterioration).

A further 'desktop' Mechanical and Electrical (M&E) survey was undertaken in November 2017. The condition has not been adjusted to take this M&E survey into account, as the Council along with other Scottish Councils is about to update the means of assessing condition. The works required as a result of the M&E survey have been included in the potential future spend. These works include ventilation, fire alarm systems, heating and hot water pipework, insulation and building fabric improvements.

Planned and unplanned maintenance on the school building in the last 3 financial years cost £14,144.

4.4 Financial Information (Staff, Buildings, Transport and Other)

The revenue cost for financial year 2017/2018 for operating Abernyte Primary School was £120,786. This includes staff and building costs such as energy and cleaning. The cost of upgrading the building as detailed in paragraph 4.3 "Building Information" is £333,090.

A financial overview is contained in Appendix 4.

5. Options for Consideration

A number of options are considered for the future of Abernyte Primary School as part of this options appraisal:

- Option 1 – School remains open with existing catchment area;
- Option 2 - Consider mothballing the school – pupils moved to Inchture Primary School;
- Option 3 - Catchment area is reviewed to determine whether this would increase the school roll sufficiently to ensure the future sustainability of the school; and

- Option 4 – Consider closing the school – pupils moved to a neighbouring catchment school.

In considering the options below, account was taken of the fact that there is a presumption against closure of a rural school. As part of the options appraisal, the “rural school factors” specified in the School (Consultation) (Scotland) Act 2010 have been given special regard. These are:

- Effect on Community;
- Effect on Travel Arrangements; and
- Educational Benefit

5.1 Option 1 – School remains open with existing catchment area

Community Feedback

The community was not in agreement with this option. If this option progressed then the community felt that the school roll would continue to fall and this would eventually result in school closure.

- *To do nothing is not an option, unsustainable and not stimulating;*
- *Will not help with predicted continued decline in pupil numbers;*
- *The school will close if nothing is done.*

Community Impact

From the community engagement session, there was a view that the school was an important part of the village and many do not want to see it close. Comments suggested there would have a detrimental effect on the local community if the school did not remain open.

The local community use the school building to host their monthly Wine Club and the Heritage Group also host meetings in the school occasionally during the year.

Within Abernyste, the Church building is available to let for community events. In nearby villages there are schools and village halls available to host future community events if the school was unavailable.

Pupil Impact/Pupil Roll

If the school is to remain open without change, then pupils would not experience any change to their current schooling.

However, table 4 in section 4.2 shows that the school roll is not expected to increase in the next 4 years, so it is the case that pupil numbers will be likely to remain very low.

Financial Impact

The financial implications of retaining the 'status quo' for the school are a continuation of the current annual revenue costs of approximately £120,786 per annum. This figure includes home to school transport.

A capital cost of £333,090 will still be required to upgrade the building.

Assessment of Option 1

This option will not affect the community or travel arrangements. Current pupils would continue to attend the school.

The reason for taking forward an Options Appraisal for Abernyte Primary School was that pupil numbers had been consistently low over recent years and there was concern over the sustainability of the school. The pupil roll projections (table 4 section 4.2) reflect that there is no evidence to suggest that the roll will increase over the next 4 years.

It has not been possible to identify other steps which could increase the roll, whilst maintaining the status quo. Therefore, other options which may make the school more sustainable should be considered. This is therefore not considered a reasonable option.

5.2 Option 2 – Consider mothballing the school – pupils moved to Inchture Primary School

The term 'mothballing' is used, according to Scottish Government guidance, to refer to a temporary decision to close a school where the roll has fallen to zero. It recognises the potential impact on a community of closing the school and seeks to avoid that final decision until there is sustained evidence of no demand. It can be an appropriate and positive step where there is some prospect of revival in a community. All parents must agree to a school being mothballed.

The Statutory Guidance for the Schools (Consultation) (Scotland) Act 2010, in relation to mothballing, states "the maximum length of its duration is likely to depend on the location of the school and the desirability of maintaining capacity to re-open a school there, but it is unlikely that it should exceed 3 years in areas that are not very remote".

Community Feedback

The feedback received from the engagement session was that this is not a preferred option. There were a few comments that if the school is mothballed then it will eventually close.

- *Mothballing would be the worst option as it would mean the school was not available for either the children or the wider community;*
- *Not in favour of this option – will inevitably lead to closure & the loss of a valuable community resource. Likely to lead to inevitable building deterioration & unfortunate vandalism. Also leads to increased pupil transport costs;*
- *Mothballing would lead to slow decline in the vibrancy of local community;*
- *Very poor option that is effectively closing the school.*

Pupil Impact/Travel Arrangements

If Abernyte Primary School was to be mothballed, pupils will be accommodated at Inchtute Primary School which is approximately 3.4 miles away and is the closest school to Abernyte Primary School. Current pupils would have to travel between approximately 3.3 miles and 5.8 miles to attend Inchtute Primary School.

Pupils would be entitled to free transport as they live more than two miles away.

Two comments were received from the community engagement session and surveys on the effect of change on children relating to mothballing, both related to transport.

- *Less family time due to doubling journey at both ends of day. Carbon footprint doubled. Days lost due to snow will increase. Too far especially for young pupils. Inchtute is full;*
- *Transport to Inchtute = increased pollution.*

School Environment

Inchtute Primary School has a capacity of 264 pupils. The roll at Inchtute Primary School is 220 pupils (Census 2017). The school is currently operating with 9 classes.

Inchtute Primary School currently has classrooms for primary education, a nursery, toilets, staff and resources room, dining, general purpose room, offices, hall and storage. A floorplan of the main school building can be found in Appendix 5.

In August 2014, an extensive refurbishment and extension was carried out at the school which added a library, hall for PE provision and a multi use games area (MUGA).

The MUGA benefits from an all-weather playing surface allowing the school and the community to use year round. The MUGA was part funded by the community.

Inchtute Primary School has a nursery provision which currently offers both morning and afternoon sessions. Each session provides for a maximum of 35 children from aged 2 until they attend school ie 70 children in all. There are 39 nursery children (Census 2017) registered at the school. Nursery provision at Inchtute Primary School will be increased by August 2020 to provide for the extension of 1140 hours of Early Learning and Childcare (ELC).

The class composition in recent years at Inchtute Primary School is as follows:

Class	2014/15	Class	2015/16	Class	2016/17	Class	2017/18
P1	21	P1	24	P1A	16	P1A	21
P2A	17	P1/2	22	P1B	19	P1B	18
P2B	17	P2/3	22	P2	25	P2	22
P3	27	P3	22	P2/3	25	P2/3	23
P4	27	P4	26	P3/4	24	P3	23
P5	22	P5	26	P4	22	P4	27
P6	19	P6	22	P5	27	P5	31

P7	16	P7	17	P6	27	P6	27
				P7	25	P7	28

Table 6 – class composition

The average class size in Perth and Kinross primary schools is 23 pupils (Census 2017). The maximum class size for composite classes is 25. The maximum class size for P1 is 25, P2 and P3 is 30 and P4-P7 is 33.

The overall suitability of Inchtute Primary School is rated 'B' (performing well but with minor problems).

A survey of Inchtute Primary School was carried out in April 2016 to assess the current condition of the building. The condition of the building is rated 'B' (performing adequately but showing minor deterioration).

Pupil Roll

If Abernyte Primary School was to be mothballed, current and new pupils would attend Inchtute Primary School. The projected roll at Inchtute Primary School would be as follows:

	2018/ 2019	2019/ 2020	2020/ 2021	2021/ 2022
Inchtute Primary School Capacity	264	264	264	264
Abernyte Primary School Pupils	6	6	3	5
Inchtute Primary School Pupils	221	235	239	246
Inchtute Primary School Roll with Abernyte Primary School Pupils	227	241	242	251
Total Occupancy %	86	91	92	95

Table 7: Inchtute Primary School pupil roll (current and future)

It should be noted that nursery pupils are not included in school capacities or school rolls. Potential house building may increase the occupancy of the school to 97% by 2021/22.

Financial Impact

The revenue savings generated from mothballing Abernyte Primary School amount to approximately £108,213 annually. This is made up of staff and building costs however, it takes account of transport costs for current pupils to attend Inchtute Primary School.

Environmental Impact

There will be reduced energy consumption if the school is to be mothballed. Children from Abernyte would have to travel further to school in Inchtute, however pupil numbers are small, the distance is minimal and the effect is therefore limited.

Option 2 - Assessment

The school roll at Abernyte Primary School has been falling since 2011 and it is not anticipated to rise in the next 3 years. There is no anticipated house building or business venture which would significantly impact on the population and as a result the school roll.

Taking account of the Statutory Guidance, mothballing of the school is only a reasonable option if there are likely to be changes within the catchment area in the next 3 years which would result in an increase in the roll. Within the next 3 years there are unlikely to be changes to the population within the catchment area to increase the roll at Abernyte Primary School. In addition, once pupils become settled in a new school, they may not return to Abernyte Primary School and the mothballing becomes in effect a closure. This is therefore not considered a reasonable option.

5.3 Option 3 - Catchment area is reviewed to determine whether this would increase the school roll sufficiently to ensure the future sustainability of the school

A catchment review can in principle be a reasonable option, to increase the potential roll, and therefore sustainability, of a school.

An in depth analysis is required in each case to ascertain if a sustainable increase in school roll could be achieved and a detrimental impact on neighbouring schools is not created as a result.

Community Feedback

Option 3 was the favoured option by the community and parents/carers of Abernyte from the community engagement session and initial online survey. Sixty four comments were received in support of this option.

- *This is the only option that may provide evidence for increasing the school roll at Abernyte;*
- *I feel that Abernyte Primary School has an important part to play in the life of their area. The numbers at the school would increase sustainably if the catchment area was enlarged and children living on this side of the dual carriageway came to Abernyte;*
- *Widening the catchment area to include rural communities to the north of the A90 would make sense due to close ties between those communities and Abernyte.*

Having taken into account the feedback from the Abernyte community and the outcome of the on-line survey of parents/carers in the Inchtute Primary School catchment to the north of the A90, approval was given by Lifelong Learning Committee

on 21 March 2018 ([Report No. 18/86 refers](#)) to carry out further assessment of the proposed option to change the catchment area of Abernyte Primary School. This would include the area to the north of the A90 which is currently in the Inchtute Primary School catchment area. The purpose of the assessment was to seek clarity as to whether an increased and sustainable school roll could be achieved for Abernyte Primary School through extending the catchment area.

Pupil Numbers

In May 2018 there were 21 primary school age children, known to Education and Children's Services, living to the north of the A90 in the Inchtute Primary School catchment area. Information obtained from the NHS in March 2018 indicated that there were 10 children under the age of 5 living in this area.

There are 17 children known to Education and Children's Services (11 primary and 6 under 5's) living within the Abernyte Primary School catchment area. Five of the 11 primary school age catchment children attend Abernyte Primary School.

The school roll at Abernyte Primary School is currently 6 pupils.

These figures above (i.e. 16 under 5 year olds) indicate that there would potentially be sufficient pupils with an extended catchment area to increase the roll of Abernyte Primary School to 13 pupils by 2021/22. This assumes that all under 5's from the extended catchment including the under 5's from the current Abernyte Primary School catchment area, attend Abernyte Primary School from 2019/20 when they reach school age.

These figures assume that an extended catchment will be in place by August 2019. However it should be noted that this may not be achievable because this would require a statutory consultation exercise to be completed prior to new pupil registrations beginning in January 2019. It is unlikely that this will be achievable due to the need to comply with statutory requirements in relation to the consultation and giving due regard to the Council's decision making processes.

Potential Catchment Area Change – Meetings with Families

The figures above, i.e a school roll of 13, do not factor in the views of parents/carers of Inchtute Primary School children living in the defined area north of the A90, in relation to whether they would be content for their children to attend Abernyte Primary School instead of Inchtute Primary School.

In order to develop a more accurate understanding of the potential for a catchment change leading to an increased roll at Abernyte, all families (parents/carers living with primary or children under 5) known to the Council living in the potential new catchment area were invited to attend individual meetings to discuss the potential catchment change. This included those families living in the current catchment for Abernyte and those included in the identified area north of the A90. Families living in the Abernyte Primary School catchment area were included in the meetings to ascertain whether they would consider moving their school age children back to the school or placing their under 5's at the school in the future if the catchment was extended.

Twenty five families living in the potential new catchment area were invited to attend one to one meetings with Council Officers. Appendix 7⁵ provides details of the process including the questionnaire and frequently asked questions used at the one to one meetings. 58 appointments were offered to families.

The outcome of the responses received is detailed in table 8 below.

		If the catchment area changed to Abernyte Primary School would you send/enrol your child at Abernyte Primary School					
Respondent (by family)	Number of Responses	Yes			No		
		No of families	No of Primary aged children	No of children Under 5 years old	No of families	No of Primary aged children	No of children Under 5 years old
Inchtur ⁶	7	0	0	0	7	12	3
Abernyte ⁷	5	2	1	3	3	4	2
Total	12	2	1	3	10	16	5

Table 8: Responses received to further assessment of proposed catchment area.

These responses do not include those families with catchment children already attending the school, who all responded in favour of the catchment review.

Parents/Carers that attended the meetings were also asked to provide comments on the proposal. Some of the comments are as follows (some information has been redacted to avoid individuals being identified):

- *Would not like small class size at Abernyte. Do not think small classes (composite) assists with development. I think the funding that goes towards small rural schools would be better distributed amongst other schools.*
- *Would rather sell house and move than attend Abernyte. Don't use after school club but might in future.*
- *Supportive of catchment review. Like to support local school. Class sizes at Inchtur are a concern. I feel decisive action needs to be taken by the Council regarding Abernyte Primary School. Either change the catchment or close the school. Leaving the situation as it is currently is not acceptable.*

⁵ Appendix 8 contains information provided by a parent at the one to one meetings.

⁶ Families currently living in the area to the north of the A90 in Inchtur Primary School catchment area

⁷ Families currently living in the Abernyte Primary School catchment area whose children do not attend Abernyte Primary School and families who have said that they are planning to move to the Abernyte area

- *Catchment review would be good. Small communities nearby would benefit. If the school was to close building would be good as a community asset – don't want school to close. Appreciate that the Council are asking people.*
- *It was a consideration when deciding what school XXXX was to attend that since Abernyte roll was so low it may close and XXXX would need to move school during XXX primary education.*

Engagement Sessions – No Response

There were 7 families known to the Council that were invited to the meetings who currently live within the Inchtute Primary School catchment area to the north of the A90 who did not respond to the invitation to meet or to contact Council Officers to make their views known.

At May 2018, those 7 families have 9 primary school age children and 0 children under the age of 5 attending Perth and Kinross Council schools and nurseries. Only 3 of these children currently attend their catchment school at Inchtute Primary School. The remaining 6 attend other Perth and Kinross Council schools.

For the school session beginning in August 2018, 8 out of the 9 primary age children identified will be in stages between P5 and S1. Therefore, by August 2021 only 1 child would be of primary school age. Therefore, although no assumption is made about the views of those who did not respond to the invitation, it can be seen that even if these children did attend Abernyte Primary School this would not have a significant effect on the sustainability of the school.

Families of 7 children under the age of 5 were not contactable as the NHS data the Council receives is anonymised. Therefore the actual ages of these children and the views of their parents are unknown.

Abernyte Primary School – Future projected school roll

Table 9 below details the future projected school roll at Abernyte Primary School taking account of the outcome of the engagement with families.

The projections in the table are based on the following information;

- Pupils already attending Abernyte Primary School are included.
- All children currently living in the Abernyte Primary School catchment area due to start school in the next 4 years, except the 2 pupils whose parents/carers intimated they would not send their children to the school, are included.
- Primary school children or children under the age of 5 from the families who engaged with Council Officers from the Inchtute Primary School catchment area north of the A90 through the one to one meetings are not included in the future pupil roll. These families indicated they did not wish their children to attend Abernyte Primary School.
- The children belonging to families living in the Inchtute Primary School catchment area north of the A90 that were not contactable or did not respond

are not included as the views of these families are not known. In addition the ages of the children under 5 are not known.

- The children of families who have said that they plan to move to the Abernyte Primary School catchment area (one primary school pupil and two under 5's) have not been included in the table.

Class	2018/19	2019/20	2020/21	2021/22
P1	0 ⁸	1	0	3
P2	0	0	1	0
P3	0	0	0	1
P4	0	0	0	0
P5	1	0	0	0
P6	3	1	0	0
P7	2	3	1	0
Total	6	5	2	4
Capacity	44	44	44	44
Occupancy	14%	11%	4%	9%

Table 9: Abernyte Primary School Roll based on responses of further assessment exercise

Based on the evidence gathered and outlined above, it is unlikely that an extended catchment area would result in pupil numbers at Abernyte Primary School increasing sufficiently to create a sustainable school roll.

Travel Arrangements/Environmental Impact

If this option progressed there would be minimal additional transport costs incurred for transporting children living within the existing Abernyte Primary School catchment area as existing arrangements could accommodate future pupils.

There would be an approximate additional cost of £17,977 per annum to transport the pupils who live in the area to the north of the A90 within the existing Inchtute Primary School catchment area to Abernyte Primary School if they were to attend the school.

The approximate maximum travel time for these pupils from first pick up to arriving at school would be 30 minutes. The longest travel time for a pupil in this area currently travelling to Inchtute Primary School is 44 minutes.

There may be an additional environmental impact with this option as it is likely additional vehicles will be required to transport pupils.

Financial Impact

If this option progressed, on the basis that pre-school children from the proposed catchment area of Inchtute Primary School north of the A90 would attend Abernyte Primary School from August 2019, there would be a continued revenue costs of approximately £120,786 to run the school as a single teacher school. In addition £17,977 would be required for the additional transport costs.

⁸ Children due to start at the school in August 2018 have submitted placing requests to other schools in PKC.

A capital cost of £333,090 will be required to upgrade the building.

Option 3 – Assessment

The proposal to change the catchment area of Abernyte Primary School to include the area to the north of the A90 within the Inchtute Primary School catchment area has been fully assessed.

Council Officers have engaged twice with the families of primary aged children and under 5's from within Abernyte Primary School's current catchment. This was done firstly through a drop-in session carried out in October 2017 and secondly through individual meetings during May 2018.

As a result of feedback from the Abernyte Primary School community drop-in sessions, and the possibility that a sustainable school roll could be developed, Council Officers also engaged twice with families of primary aged children and under 5's who live in area to the north of the A90 in the Inchtute Primary School catchment area, which was identified as a potential extension to the Abernyte Primary School catchment area. This was carried out firstly through an on-line survey and secondly through individual meetings with families held in May 2018.

It was not possible to engage with all families living in the identified area to the north of the A90. Council Officers made considerable efforts through the schools and Parent Councils to engage with parents/carers. In addition Abernyte Parent Council made strenuous efforts to encourage parents/carers to engage including leaflet drops and a BBQ to promote the school.

The conclusion of the assessment is that there would continue to be insufficient pupil numbers to increase the school roll at Abernyte Primary School or make it sustainable in future years if the catchment was extended. This is based on the following:

- None of the 7 families with children living in the Inchtute Primary School catchment area to the north of the A90, who engaged with Council officers, expressed an interest in moving their children to the school.
- Parents/carers living within the existing Abernyte Primary School catchment area whose children currently attend other Perth and Kinross Council schools, and who engaged with the Council, advised that they would still choose to send their children to other schools if the catchment changed.
- The majority of children living in the Inchtute Primary School catchment area to the north of the A90, whose families did not engage with Council officers, will attend secondary school within the next 4 years and therefore would not affect potential pupil numbers.
- It was not possible to contact the parents of 7 under 5's who the NHS have advised lived in the area to the north of the A90 in the Inchtute Primary School catchment area in March 2018. The views of these parents are not known. However, given the small numbers it is unlikely that the roll will be significantly increased even if all of those pupils attended the school from 2019/20 onwards.

In summary, there is no evidence that an extension to the catchment area will significantly improve the sustainability of the school. It would not therefore be reasonable to proceed with a change to the catchment area.

It is recommended that this option is not a reasonable option going forward as there would be insufficient pupil numbers to increase the school roll at Abernyte Primary School and make it sustainable in future years.

5.4 Option 4 – Consider closing the school – pupils moved to a neighbouring catchment school

There are a number of primary school catchments adjoining Abernyte Primary School including Balbeggie Primary School, Burrelton Primary School, Collace Primary School, Inchtute Primary School, Kettins Primary School and Longforgan Primary School.

Balbeggie Primary School, Burrelton Primary School, Kettins Primary School and Longforgan Primary School have all been discounted as alternative schools as the pupils would have to travel through another school catchment area to reach their primary school. Collace Primary School is further to travel than Inchtute Primary School for children. In addition, it is not a 'Carse of Gowrie' community and children attend a different secondary school from Abernyte Primary School.

Appendix 6 analyses neighbouring catchments. Inchtute Primary School is the preferred school for the pupils from Abernyte Primary School catchment to attend should this option progress, due to its proximity. It is considered that closure of the school is a reasonable option due to not being able to develop or maintain a sustainable school roll as detailed in Options 1- 3 (sections 5.1, 5.2, 5.3).

Detailed analysis of this option is contained in Section 6 of this report.

5.5 Overview of Options

The outcome of the options appraisal is summarised as follows;

	Option Description	Outcome
Option 1	School remains open with existing catchment area	Rejected. Not a reasonable option due to not being able to maintain a sustainable school roll.
Option 2	Consider mothballing the school – pupils moved to Inchtute Primary School	Rejected. Not a reasonable option due to not being able to develop a sustainable school roll within 3 years.
Option 3	Catchment area changed to increase the school roll and ensure future sustainability.	Rejected. Not a reasonable option due to not being able to develop or maintain a sustainable school roll at Abernyte Primary School.
Option 4	Consider closing the school – pupils moved to a neighbouring catchment school.	Accepted as a reasonable option due to not being able to develop or maintain a sustainable school roll at Abernyte Primary School

The outcome of the option appraisal recommends Option 4 – consider closing the school – pupils moved to neighbouring catchment school.

6. Detailed Analysis of Reasonable Option: Consider closing the school – pupils moved to neighbouring catchment school.

This section provides a detailed assessment of the option which is considered reasonable in the circumstances. It considers the “rural school factors” of community impact and impact on travel arrangements, as well as including an Educational Benefits Statement.

This is considered a reasonable option because there are few families living in the Abernyte Primary School catchment area. In addition, parents are choosing to place their children at other primary schools. These factors have led to the school having very low pupil numbers.

A further assessment was carried out to gauge support for a proposed catchment change among those who would be affected by this. There was no support for this from the families with children living in the area proposed, who engaged with Council Officers. An expanded catchment area would therefore not make the school roll sustainable.

6.1 Community Impact

Community Impact – Loss of the school

Closure of the school was not a preferred option of parents/carers and the wider community. There was a view that closure of the school would affect the wider community. The community commented that they are invited to school activities during the school year. Comments also referred to the school being part of the village’s history and the impact it would have on the village and the community if the school were to close:

- *Many activities take place in the school bring all the parents, grandparents etc together. Strengthening the community;*
- *The school helps hold the community together. It’s where people meet;*
- *Closing the school would have a very adverse impact on the wider community of Abernyte as it is the focal point of the community. The wider community are very supportive of the school and attend many school activities.*

A few comments referenced the school being too small and that finances could be redirected towards other schools.

- *I think that the children would benefit moving to a more vibrant school – social skills, friends etc. It would be a great pity to see the school removed from Abernyte but surely we should be thinking of the children;*
- *I know that the education is very good at Abernyte, however the cost per pupil must be astronomical. As far as I can see there are more staff than pupils, whilst Inchtute has struggled to afford reading books for the kids.*

The community has easy access to amenities. The village of Abernyte is close to good road links to both Perth and Dundee and a number of relatively large villages including Errol, Inchtire , Longforgan and St Madoes. These villages have amenities including post offices, shops, GP surgeries, churches, hotels and schools. The closest village is Inchtire which is approximately 3.4 miles away.

The Abernyte community is described by members of the community as ‘strong, vibrant, active and dynamic’. The Abernyte Community Interest Company provides support and continues to develop the community by hosting community events throughout the year as well as continuing their heating collective.

In 2017, the Council closed schools in Calvine (Struan Primary School) and Enochdhu (Straloch Primary School) after they had been mothballed for 5 years. The evidence from both areas was that families were not deterred from moving into the area by having to travel to a neighbouring village to access facilities. There are clear parallels with Abernyte in that the communities already travelled to other local communities to access services and in fact Abernyte has better access to local amenities than either Calvine or Enochdhu.

Community Impact – Use of the building

The Wine Club and Heritage Group both use the school throughout the year. There was concern from the wider community that if the school was to close there would be nowhere for the community to meet.

- *The worst possible option for the community – loss of school & loss of a wider valuable community resource, especially given the building is in relatively good condition. This option should not be taken any further;*

Within Abernyte itself, the church building is available for use by the community. If the school was to close, community events could continue in the church building. Alternatively there are village halls and church buildings in nearby villages as well as the other Carse schools.

Closure of the school would provide opportunities for the building to be used for the benefit of the community, either for business or residential use, or for community use if a suitable plan was identified.

6.2 Impact on Travel Arrangements

The travel distance between Abernyte Primary School and Inchtire Primary School is approximately 3.4⁹ miles.

To attend Inchtire Primary School, current Abernyte Primary School pupils would have to travel between approximately 3.3 and 5.8 miles each way. The journey times would be approximately between 9 and 20 minutes by school transport.

⁹ Approximate distance sourced from Google Maps

This is an increase of approximately 3 and 3.2 miles each way for pupils. Travel time is increased from a 1 minute journey to a 9 minute journey for some pupils and up to 7 minutes extra travel for pupils living further from the school.

The effect on pupils of travelling to Inchtute Primary School from the Abernyte Primary School catchment is limited due to the relatively short distances involved and the small numbers requiring transport. Future transport would be provided by the Council for those pupils who live beyond the statutory travel distance to school, including those who currently attend Inchtute Primary School from Abernyte Primary School catchment as a placing request.

Staff in Perth and Kinross already travel throughout the area to work in schools. Many staff do not live within the catchment area of the school they work in. The distance of 3.4 miles is a relatively short distance to travel in rural Perth and Kinross. It is therefore considered that there is very limited impact on staff travelling arrangements.

The community currently requires to travel to access other services and there should be no other additional impact on travel arrangements should the school close as there are other buildings nearby which can be accessed by the community for social use.

6.3 Educational Benefits

This Educational Benefits Statement has been prepared having regard to the Guidance and Explanatory Notes published by the Scottish Government in association with the Schools (Consultation) (Scotland) Act 2010.

As required by the above Act, this Educational Benefits Statement is written from the perspective of benefits, should the preferred option outlined in the options appraisal proceed to a proposal paper under the Schools Consultation (Scotland) Act 2010, and subsequently be implemented.

Learning and Teaching

- Children attending Inchtute Primary School have access to a wide range of teaching and support staff from early years and primary. Inchtute has a nursery and nine primary classes. This allows children to transition throughout the school as they get older and be taught by different practitioners in different settings.
- Pupils have access to early years provision within the setting of the school, allowing for seamless transition to P1, with pupils already familiar with the physical setting as well as the opportunity for regular work with primary peers.
- At Inchtute Primary School, staff are challenged and supported through a range of continuous professional development and review, which comes of having a Headteacher and Depute Headteacher who are not class committed, and teaching staff across nine classes. Staff collaborate across the school for planning, learning and teaching to ensure children receive experiences that are relevant and present clear challenge and enjoyment. Staff work together to moderate standards of learning and achievement in the school to ensure that children make appropriate

progress in a structured and progressive way through Curriculum for Excellence levels.

- At Inchtute Primary School, there are large classes, and all age groups within the school. The size of the classes affords all pupils the opportunity to build relationships at peer level and across all stages in the school and in mixed sex groups. This allows the sharing of ideas, peer support, informal mentoring and relationship building, all which contribute to the whole school experience for all pupils.
- Inchtute Primary School has provision for two days consultancy led support from a Pupil Support Teacher, allowing group work to take place, as well as 57 hours of PSA support, which not only benefits pupils with ASN, but all other pupils, who can work in these groups, and benefit from short term support.
- Work is differentiated to adapt to pupils' needs and pupils benefit from being able to work on co-operative learning tasks with others. Flexibility in staffing allows staff to be creative in planning for children with additional support needs both universally and for targeted need, thus addressing potential barriers to learning.
- Teachers work collaboratively, at Inchtute Primary School, creating links in learning across stages on a termly basis. There are wide opportunities for collaborative/cooperative learning.
- There are opportunities to improve arrangements for planning and taking forward improvements through effective self-evaluation for all staff. The support of a Headteacher and Depute Headteacher can be effective in these improvements.
- A collegiate approach to professional engagement amongst all staff is evident within the school. Staff come together regularly to review and improve practice as a school, with partner services and other schools in the Local Management Group. There is a strong commitment across all staff to lead improvements in learning and teaching from evidence based research. This enhances the quality of learning and teaching through shared opportunities to develop effective approaches and to share and moderate standards.

Environment for Learning

- In 2014 considerable resources were allocated to the school, which saw an extension which added three classroom areas, a General Purpose (GP) room, library, meeting and group rooms and a multi-purpose games hall.
- In 2016 an outdoor Multi Use Games Area (MUGA) was opened, which can be used by children and the community.
- The school grounds at Inchtute provide facilities for football, cricket, netball and athletics, with range of surfaces where physical activities can take place at all times of the year.

- Inchtire has attractive, bright, well designed classrooms, naturally lit with modern teaching equipment and resources.
- Classrooms are semi open plan, allowing the opportunity for children to work alongside each other in other classes and break out areas. These break out spaces allow for flexibility in teaching methods and afford a range of learning opportunities, from working in small groups, to vertical learning with children from other stages and classes.
- All classrooms have teaching walls, with interactive whiteboards, providing the opportunity for all children to access the curriculum in modern and innovative ways, through the use of smartboards and interactive technology.
- Inchtire Primary is accessible for children and adults with Additional Support Needs. It is on one level and has DDA compliant toilet facilities for children and adults.
- Inchtire is an Eco school, benefitting from an outdoor area which facilitates eco learning and promotes health and wellbeing through play and team games, with features such as a willow tunnel, trim trail, wooded area, grass area and large hard standing playground for team games.

Experiences and Opportunities

- The school has pupils of both sexes at each stage, allowing all pupils to interact and socialise with groups of children their own age and sex, at appropriate levels.
- There are numerous opportunities for social interaction in terms of both peer activities in class and at break times and accessibility to school clubs and extra-curricular activities, team activities, sports, such as football and netball, music and drama. In addition, there are eight pupils councils, facilitated by a teacher, but pupil led. These are the Eco council, the School Improvement council, the Health and Citizenship council and the Friendship and Community council. These give pupils opportunities to lead and make decisions.
- Health & Wellbeing is promoted at Inchtire, with a tuckshop run by pupils and health and enterprise group run activities for all pupils one afternoon a week. Inchtire also has a Bike crew who heighten awareness of bike/cycling safety through organising events for the school community. As well as promoting health & wellbeing, these also provide the pupils with life and social skills.
- Inchtire has an active Parent Council, fully supportive of the school community.
- There is provision at Inchtire of out of school care, which offers structured play for the children, and also provides a useful service to working parents and carers, allowing access to the workforce for parents who might otherwise be limited by school hours.

- There are opportunities available to pupils through twinning links with Fleac in France, widening opportunities to experience new cultures and language, building on the work done in school.

Summary of Educational Benefits

- Inchtute is a bright, modern school, with mixed sex classes at all stages in the school, including nursery.
- The school roll allows all children to participate in peer support, classroom learning, and vertical learning groups, with the benefit of allowing children to have a wide and varied range of learning experiences.
- Learning and teaching at Inchtute starts with the early years provision, supporting a seamless transition to Primary One.
- The building lends itself to modern teaching methods, with good use of break out space, accessible and flexible teaching and outdoor areas and good facilities for sport and leisure.
- Staffing levels at Inchtute are good, with ASN support, and non-class committed senior management.

6.4 Financial Impact

The financial savings generated from closing Abernyte Primary School amount to approximately £108,213 including mothball costs annually. This is made up of staff and building costs. Transport costs for pupils to attend Inchtute Primary School have been factored into this saving (refer to Appendix 4).

The capital cost of upgrading the building of £333,090 would not be required.

These financial savings support the delivery of education across the whole of Perth and Kinross which was a view supported by some parents/carers who attended meetings in regards to the proposed catchment review.

A capital receipt would be forthcoming if the building was sold or income would be generated through a lease.

Combining pupils from both catchment areas into one school maximises use of the school estate and represents good asset management.

6.5 Environmental Impact

There will be environmental benefits from energy consumption reducing if the school is to be closed.

There is little impact on travel due to the small numbers of pupils to be transported and the distances having to be covered.

6.6 Pupil Projections

It was acknowledged during the engagement sessions that there is a lack of families living and moving into the area. It was stated that a contributing factor is that the property that is being built in the area is unaffordable to young working families and as a result they are not being attracted to the catchment area. This contributes to the low pupil roll.

There are also a number of families living in the catchment area who are choosing to send their children to other schools in Perth and Kinross. Families are more mobile and are exercising their right to choose which school they attend. There is also therefore evidence that families will still choose to live in the catchment area even if there was no school in the village. These families also highlight that parental choice impacts on the sustainability of school rolls.

The maximum projected pupil roll within the next 4 years is 6 (see table 4, section 4.2). This is an insufficient number to create a sustainable roll. It is likely given past patterns, that parents of P1s living within the catchment area would continue to choose to send their child to other nearby primary schools.

The catchment pupils who were due to attend the school in August 2018 have submitted placing requests to other schools.

The house building in the Abernyte Primary School catchment area over the next 4 years is limited with few if any additional pupils for the school as a result.

6.7 Option 4 – Assessment

The school roll at Abernyte Primary School has been low for a number of years. This is due to lower numbers of young children living in the catchment area but also due to parents choosing to send their children to other schools. P1 intakes over the next 4 years will continue to be low, based on the information available. At the moment, two of the pupils eligible to attend the school in August 2018 have made placing requests to attend other schools.

Feedback from the community indicated that new housing in the area is expensive, no young people with families are moving into the area and that the population is getting older. That view tends to be supported by the evidence which is that there are very low numbers of under 5's living in the catchment area.

It is considered that the closure of the school would not have a significant impact on the community as evidence suggests that there are other facilities available for use with ACIC providing a catalyst to an active community. In addition amenities including post offices, shops, GP surgeries, churches, hotels and schools are easily accessible in nearby villages.

It is considered that closure of the school is a reasonable option due to the unsustainable school roll. There is no indication that the roll will increase in future years even if the catchment area was extended as per option 3 as under 5's numbers are low and likely to remain so.

This option, if implemented, brings educational benefits for the Abernyte Primary School pupils moving to Inchtute Primary School as they would benefit from peer support and learning groups across stages and between classes and early years provision.

7. Conclusion

In November 2016, it was agreed as part of the School Estate Transformation project that an options appraisal should be carried out on Abernyte Primary School due to under-occupancy.

At that time, the school had a pupil roll of 8 (School Census 2015) and an approved capacity of 44 giving an occupancy level of 18%. The school roll has since fallen to 6 pupils. This is in part due to parents choosing to send their children to other schools but also due to small numbers of primary age pupils living in the area.

Information was collated on pupil numbers, housebuilding, finances, the school, the local area and community, travel arrangements and environmental impact to inform the options.

As part of the review, a pre-consultation exercise was carried out with the local community. As a result of the pre-consultation exercise, an assessment was also carried out in relation to a potential catchment area change, including meeting parents/carers of children living in the areas who would be affected by this.

The outcome of this assessment was that if the catchment was extended, the parents/carers of Inchtute Primary School children living in the catchment area, who engaged with Council Officers would not choose to send their children to Abernyte Primary School. There would therefore be insufficient pupil numbers to increase the roll and make it sustainable in future years.

The outcome of each of the options is therefore determined as follows:

	Option Description	Outcome
Option 1	School remains open with existing catchment area.	Rejected. Not a reasonable option due to not being able to maintain a sustainable school roll.
Option 2	Consider mothballing the school – pupils moved to Inchtute Primary School.	Rejected. Not a reasonable option due to not being able to develop a sustainable school roll within 3 years.
Option 3	Catchment area changed to increase the school roll and ensure future sustainability.	Rejected. Not a reasonable option due to not being able to develop or maintain a sustainable school roll at Abernyte Primary School.
Option 4	Consider closing the school – pupils moved to a neighbouring catchment	Accepted as a reasonable option for the following reasons;

	school.	<ul style="list-style-type: none"> • Educational benefits to Abernyte Primary School pupils moving to Inchtute Primary School include peer support and learning groups across stages and between classes and early years provision with seamless transition to Primary 1. • Not being able to develop or maintain a sustainable school roll at Abernyte Primary School.
--	---------	---

The only option which is considered to be reasonable is to consider closing Abernyte Primary School, with the pupils transferring to Inchtute Primary School.

Special regard has been given to the rural school factors and the assessment of these are set out in the Options Appraisal. The anticipated educational benefits which are likely to occur should that option be progressed and implemented are also considered.

It is therefore recommended that the most appropriate response to the issues identified in relation to the roll at Abernyte Primary School is that a statutory consultation exercise takes place on a proposal to close the school. As a result, pupils would be transferred to Inchtute Primary School. The delineated area of Inchtute Primary School would be extended to subsume the whole catchment of Abernyte Primary School.

Appendix 1

Community Engagement

Website and On-line Questionnaires

A 'School Estate Transformation' page was set up on the Perth and Kinross Council website which provided the wider community with an overview of information that the Council would be using in the options appraisal, including pupil projections and building information.

A questionnaire was also available for completion, for those people that could not attend the community engagement events. The questionnaire asked people to respond to a series of options and questions related to the options appraisal.

The questionnaire was available on the Council website from 20 September 2017 to 3 November 2017. Twenty three questionnaires were submitted with 17 detailing a preferred option.

Drop-In Session

A community drop-in session was held at Abernyte Primary School on Thursday 26 October 2017 from 3:15pm to 7pm to seek feedback from the community on the future of Abernyte Primary School. Forty nine people attended the session. 19% of the attendees identified themselves as members of the community, 27% as parents/parents of past pupils, 14% as family members, 8% as neighbours of the school, 6% as 'other', 4% as Local Members and 2% as Press.

The Council is grateful to Abernyte Parent Council and Inchtute Community Council for their assistance in the planning and publicity for the drop-in session.

Content of Sessions

Visitors to the events were given an overview of information that the Council would be using in this options appraisal, including pupil projections and building and financial information. They were asked to:

- give feedback on each of the options being considered in the options appraisal either through using post-it notes or through filling in a questionnaire
- respond to a couple of additional questions related to the reducing roll of the school and the reasons for choosing the school

Abernyte Primary School
Community Drop-In Session
26 October 2017

**Overview of comments received at Community
drop-in session and Online Questionnaires**

Online Questionnaire Feedback

23 questionnaires submitted online – 20 were completed, 3 partially completed

- 26% (5) of responses from parents, 5% (1) were from the other family members, 26% (5) of responses were from neighbour, 32% (6) were from the wider community and 11% (2) responses were from other.
- Four people gave no indication of their relationship to the school
- Six questionnaires were submitted without any comments
- 6% (1) of responses preferred option 2, 18% (3) of responses preferred option 3 and 76% (13) preferred option 4
- Six questionnaires submitted gave no indication to their preferred option
- Questionnaire closed on 10 November 2017

Online Questionnaire Feedback

Option - Do nothing

Comments

- To do nothing is not an option, unsustainable and not stimulating.

Online Questionnaire Feedback

Option – Consider mothballing the school – pupils moved to Inchtute Primary School

Comments

- The mothball option would be a possibility however a substantial cost would be required to maintain the mothballed school in the hope that more pupils moved to the village, which is a very remote chance.
- Social interaction with more children at a larger school. I see how behind my daughter is compared to children the same age.

Online Questionnaire Feedback

Option – Consider closing the school – pupils moved to a neighbouring catchment school

Comments

- To invest the funds in a local sustainable, growing modern school, instead of falsely subsidising a school with such a small, and reducing headcount
- The school has become too small to attract further pupils. It has no nursery and no after school club, resulting in Parents having little choice but to request placing their children in other local schools which offer these facilities, or utilise private schooling. There is a distinct gender imbalance in the current school role. The immense cost to the public purse of continuing to operate the school is preventing investment of these funds into larger community schools, with better long term prospects. The modern approach to schooling is fewer "super" schools with adequate funding and modern facilities. This negates the other options.
- Lack of children wanting to attend the school. Looking at P1 pictures in the Courier I felt that with no P1 or P2 at the school, should the area be extended any children joining next year would be isolated from children their own age, as existing P3 would be in P4 and not a very good situation for younger children just starting school. It would be a pity to lose the school as it is used on occasions for adult social activities, but weighing up the costs and in my opinion lack of social interaction for the children, despite what appears to be

an excellent level of education; I feel that the children's needs should be at the forefront.

Online Questionnaire Feedback

Option – Catchment area is reviewed to determine whether this would increase the school roll sufficiently to ensure the future sustainability of the school

Comments

- Educational benefits of the current school arrangement at Abernyte PS are worth keeping, i.e., Curriculum for excellence is about children developing the skills they need for their learning, life and work. The Abernyte children are developing these skills in a rural setting where they live and in time may need to work continuing family work life styles. If the school closes it sends a message that rural life is unimportant, rather than showing the importance of diversity. The school provides a nurturing environment which takes full account of the context the children are living and learning in. The school is enabling the children to become confident and effective contributors as they are very successfully involved in leading their learning and in decisions about the school. It is very effective because of the small school numbers which does not always happen as well in other schools. The children live in a rural location and benefit from learning enabling them to be responsible for the environment they live and currently learn in. Their community is rural and a very different context from children living in towns. Learning experiences at Abernyte are building children's resilience which is a must to successfully live in such a rural setting and be prepared for future life and work. Learning experiences are relevant and purposeful suiting and fully taking account of the unique aspect of rural living as well as widening the children's horizons through a wide range of well-planned learning experiences with peers in other schools and from across the authority. This rural context for life and learning cannot be replicated or fully understood in a bigger school out with their rural community. The children will lose more than they gain if moved out of their community to a larger school nearby. Reviewing the catchment area could enable other children living in this rural setting to attend Abernyte to develop relevant skills for learning, life and work preparing them to take their place in society either in a rural or any other setting. If the catchment is reviewed and more children travel to Abernyte savings on transport could be possible.
- Both Errol and Inchtute schools have been extended to accommodate the pupils coming from new housing areas in the Carse. With more building planned I believe it would be cost effective to change some catchment areas (also Kinnaird, Rait, Kilspindie etc.) to Abernyte. My children went to Abernyte from Kinnaird and received an excellent, child centred education. The school also serves as a much –needed village hall for the local community.
- Because the school is the heart of the community and it would be a shame to lose it.
- I went to Abernyte Primary and it was a fantastic school and the heart of our little community. Inchtute primary is full and it is shameful that children from

our community are allowed to go to Inchtute rather than support Abernyte. There are plenty local kids, extend the catchment area and save our school! Thanks.

- This is the only Community building in Abernyte and its loss will be keenly felt. This option retains the possibility of a viable school and community resource for the future. All the other options will ultimately result in the loss of this building to the community.
- Education of acceptable standard; Schools already overflowing. Maybe if you expanded the catchments earlier (while all the other schools were getting expanded/renewed) you wouldn't have had this problem.
- As an ex teacher at Abernyte, I believe in the value of a small school environment education, pupils from a school such as this leave with a huge sense of self-worth, reliance on their own abilities and confident, having had many opportunities to shine within a valued and supportive environment.
- We have to stop losing schools like AP to the failing institutions that are large schools. I am able to see first-hand what becoming a faceless, exam number does to a child and by closing this school you will be condemning these children to that fate. I am not able to offer this kind of education to my own child but I feel so happy that it's the life for some. Be different and do everything you can to keep this wonderful little school open.
- (1) It is efficient use of existing resources: the council should look at the mid-to-long term school capacity requirements for the entire Carse area and utilise Abernyte School to relieve the pressure on school places in the Inchtute/Errol areas. Abernyte School is a well maintained, high achieving school and is ideally placed to help manage the mid/long term capacity requirements of the growing Carse region. To further expand the Inchtute/Errol schools would require capex approval, which is in short supply. (2) It supports the Curriculum for Excellence: Abernyte is consistently rated highly by inspectors, offers an excellent standard of education, produces confident individuals, caring members of the community and is a shining example of how rural schooling should be delivered. Music, arts, caring for the environment, caring for the community, health & wellbeing, teamwork, charitable activities are all promoted as much as excellence in academic subjects. Individual pupil requirements are met to ensure all are successful learners. All pupils have the opportunity for personal achievement and independent thinking is encouraged. The ethos and life of the school is amazing and there are absolutely no educational ground on which to choose the other options (all of which effectively mean the school closes). A decision to expand the catchment area needs to be taken as soon as possible to safeguard the future of this brilliant rural school located in the expanding Carse district.
- All other options mean that the school closes, which is a massively short-sighted decision in an area of P&K where population is growing and Inchtute & Errol schools are going to struggle for capacity (if this isn't already the case in P1 classes). Concerned parents contacted the council 5 years ago to ask for a catchment area review to keep the school at 2 classes. This request was ignored and we are now at a stage where action needs to be taken as soon as possible to attract and maintain the quality teaching staff that Abernyte is used to.
- A school is vital to the strong and vibrant community in Abernyte. This school creates more than well-educated and confident children, it also serves as a

hub for many village events that bring a wide population of Perthshire together for family fun and charity raising purposes. This strong community is essential to delivering the curriculum for excellence goals of confident and responsible contributors in years to come. Attending these events as families and having the community involved in the school sets this good example for the children. Expanding the catchment would bring the small rural communities together of Rait, Kinnaird, Knapp, Abernyte, Baledgarno, improving the future of these areas and maintaining the important age diversity in the rural areas. The well maintained school building could provide much needed spare capacity to remove pressure from Inchtute as this village continues to expand.

- The school is an integral part of the Abernyte community it would be so sad to lose it. We are in the catchment for Abernyte but chose to send our children to Kettins Primary simply because all of our wider family live that direction. If for any reason I needed them to collect them it would be much easier. It is a similar distance from our house to Kettins as Abernyte.
- Inchtute Primary School is overcrowded. Local children are not being sent to Abernyte Primary School because of the threat of closure. The school is at the heart of the community. It serves as the village hall as well as a school. Options 1, 2 & 3 would end in the same result; closure of the school.
- I assume that we would all like to live in a caring and socially responsible society. I am of the opinion that an education process beginning in a fully integral part of a community is a good way to achieving that. In the absence of any other community space within the village, the school provides an essential community resource. Removing children from their local environment, even if it is only to the next village, may have a short term financial cost saving benefit, but at what long term cost. To support my case I would offer a demonstration of such commitment to a local society. On the recent occasion of a non-teaching member of Abernyte School staff retiring, a leaving party was organised. What was unusual about this party was who organised it, and the large number of people who attended. It would be normal for it to be organised by the school staff, but in this case it was former pupils. These pupils, who had all attended the school in the past, progressed on through secondary and tertiary education, had all still maintained an association with the school. One pupil who could not attend emailed best wishes from as far away as Antarctica. In my judgment the case for enlarging the school catchment area is long overdue.

Online Questionnaire Feedback

Are there any other options that you would like to propose for the school?

Comments

- Arrangements such as a joint headship for Abernyte with another school, such as Inchtute PS or other local school would also achieve savings and could enable Abernyte PS to continue as a viable school for the community it serves.
- Impact on the children.
- None that I can see.

- It is possible that reviewing the catchment area, and making a large, significant investment in the school in order to provide the modern facilities required by the community (nursery / after school club) could attract more pupils, but at what cost to the other local schools, and should the council invest further public money in a school with such small current pupil numbers.
- What about an option of Inchtute and Abernyte being one school and based on two sites. My understanding is that Inchtute is very full. Maybe P1 and P2 could be based up at Abernyte?
- The school had been the heart of Abernyte for decades and is used by many other groups in the evenings etc. If we lost the school it would be a huge loss for many and annoyingly, I bet it would be converted to houses, increasing the need for a local school.
- No, just to ensure the building is kept for the community.
- Abernyte does not have a village hall; there would be a complete lack of services to this beautiful and historic village in the heart of Perthshire. This would also add resource pressure on Inchtute School where a number of further housing expansions are already planned.
- Please review the population of children in the local area in 12 months, there are currently many planning applications in place and many houses for sale that might improve the number of children wishing to attend in future years.
- Use Abernyte School as an annexe of Inchtute for specific activities such as exercise and other outdoor activities, music tuition, or special needs pupils.

Questionnaires were provided at the drop-in session, the feedback is as follows:

Option - Do nothing

Comments

- It is the heart of the community.
- Do nothing is not viable with no likely increase in numbers of pupils from existing catchment.
- I believe that to do nothing will eventually result in closure. Many families surrounding the area chose to send their children elsewhere as the school is so small. This results in a 'catch 22' situation whereby – if everyone who felt this way sent their children to Abernyte – the school would be much bigger. I think the school/council/community needs to be more pro-active in attracting pupils and widening boundaries would help. Kinnaird is a really close neighbour and perhaps some children from Inchtute would enjoy a smaller school (for example). Closing the school and sending pupils elsewhere would remove the heart of the community and be detrimental to both the local children and the village as a whole.

Questionnaires were provided at the drop-in session, the feedback is as follows:

Option – Consider mothballing the school – pupils moved to Inchtute Primary School

Comments

- Closing or mothballing the school would not help the community or pupil numbers but enlarging the catchment or attracting more pupils by providing additional facilities could save it. Parents may choose other schools because they have breakfast clubs & after school clubs.
- Mothballing by parents would be a preferred 2nd option.
- Mothballing would lead to slow decline in the vibrancy of local community.

Questionnaires were provided at the drop-in session, the feedback is as follows:

Option – Consider closing the school – pupils moved to a neighbouring catchment school

Comments

- Closing the school would affect the village and children are better, happier in a local environment. It is also a waste of an excellent facility

Questionnaires were provided at the drop-in session, the feedback is as follows:

Option – Catchment area is reviewed to determine whether this would increase the school roll sufficiently to ensure the future sustainability of the school

Comments

- Best chance to make a school a vibrant & busy place again.
- As long as (young) people can afford to live in Abernyte I feel there should be a local primary school they can walk to.
- Plan towards catchment change and then re build of school when this becomes necessary in some years to come.
- I feel that this option is the best and most direct way to help the school to grow and support other efforts.
- Widening the boundaries seems the best solution – but convincing families within the boundaries that it is a wonderful experience and privilege to come

to a smaller school would help. The school needs to be proactive in talking to and recruiting children in Abernyte who are of pre-school age.

- Lack of pupils in present catchment area, keeping the community together.
- Abernyte School is central to our community, life in Abernyte PS keeps the village alive and the building provides the only meeting place for community events.
- Village community needs a school. Small school education is an excellent foundation.
- Abernyte School is the centre of the community also our daughter had an excellent education here therefore everything should be done to try and ensure the viability of the school.
- This is the only option that may provide evidence for increasing the school roll at Abernyte.
- I was a pupil at this school and I would like other children of the community and surrounding areas to benefit from the same education as I did. It was an incredible start in life and in addition to an excellent education – I feel a strong connection in this community through having been a part of it. It would be a real tragedy if the school was to close. I couldn't have asked for a better primary education.

Questionnaires were provided at the drop-in session, the feedback is as follows:

Are there any other options that you would like to propose for the school?

Comments

- Have a nursery. Have a shared headship.
- Have P1-P3 here at Abernyte. Once the children are 8 they would go to Inchtute PS & continue their education & good sports facilities etc.
- Possibly making the school more useful to the community by providing after school clubs and facilities for community use in the evenings and weekends for events or meetings or community get-togethers.
- Raising funds by using a part of the building as an art centre/café or even an old people home.
- Overall this feels a disappointing and limited range of options. Clever educationalists can, I am sure, come up with bigger ideas.
- Nursery class, after school club and breakfast club.
- Consider using school for “specialist” needs – speech therapy, behavioural, psychologist, resource centre.
- Think the school should take a greater role in the encouragement of people in the catchment area to attend the appropriate school.

- Supplementary resource centre for Carse schools to Balbeggie etc. Providing venue for the many services, educational experiences & problems that can be met in Abernethy and short term contact time. Teachers resource – advisory teachers.
- 1. Educational resource centre for teachers. 2. School for pupils with special needs. 3. Village hall for Abernethy & Kinnaird (because only rural halls are in Rait & Inchtire).

Community Drop-In Session

Drop-in session ran from 3:15pm – 7pm on 26 October 2017.

- 49 attendees at the session
- 39% (19) were from the wider community
- 27% (13) were parents & parents of past pupils
- 14% (7) were other family members
- 8% (4) were neighbours of the school
- 6% (3) were classed as 'other'
- 4% (2) were PKC Councillors
- 2% (1) from the local press

Comments received at the drop-in session

Option - Do nothing

Comments

- Investment has been made in school over years, it is in good condition – to do nothing to keep it in use is a waste of this investment.
- Does not appear to be a viable solution.
- Will not help with predicted continued decline in pupil numbers.
- Does not seem to be an option – even if possible to continue with 5 kids – this is not a complete educational experience for them.
- The school will close if nothing is done.
- Do nothing is not a viable option. The role is not too low to be sustainable – not a good use of a facility, not cost effective, not stimulating.
- Doing nothing is not realistic given the resource situation.
- Doing nothing is in my opinion not an option. Even with another 5 children (ie doubling role) it would not efficiently stimulate the children ref social skills etc.
- I do not consider 'do nothing' as viable – it merely pushes the problem down the line a few years & resulting uncertainty will lead to a drift away from the school.
- Do nothing in my opinion is not an option as the school is a very important part of the community.
- Doing nothing would be a waste of a fantastic asset that could benefit other children and families.
- No-one has a crystal ball. Who knows if the school roll will fall even more? A lot could happen in 5 years.
- While this option may allow the school situation to improve naturally with time, I feel the school roll could be helped to become more viable.
- This is happening now and for the last years. Suggestions about catchments etc have never been supported by the P&K Council. There must be more positive actions.
- I can understand this would not be an option – unless linked with say a year of very creative village + meetings with outside input/consultation, to help broaden the role of the school – breakfast + after school, music lesson, art learning. Support for the area or other specialist activities that might not be available in other local (ish) schools.

Comments received at the drop-in session

Option – Consider mothballing the school – pupils moved to Inchtute Primary School

Comments

- Mothballing – at least this would buy some time for a possible future solution
- If needs must mothballing for a couple of years COULD be an option.
- Seems like a cop out we should decide something. Demography of the area unlikely to change soon.
- This buys time when given the past success of the school – may help find a way forward to increase number of pupils.
- How long could Abernyte School be mothballed before it deteriorates or gets vandalised? An active school is a sign of a vibrant community. If pupils moved to Inchtute Primary School, why not conduct some Inchtute classes at Abernyte?
- If mothballing the building, which is a beautiful building would deteriorate and effectively be closed as a poor building.
- Not in favour of this option – will inevitably lead to closure & the loss of a valuable community resource. Likely to lead to inevitable building deterioration & unfortunate vandalism. Also leads to increased pupil transport costs.
- Inchtute School is at capacity.
- Very poor option that is effectively closing the school.
- Less family time due to doubling journey at both ends of day. Carbon footprint doubled. Days lost due to snow will increase. Too far especially for young pupils. Inchtute is full.
- This option seems to me to be merely a delay in closing the school, and will affect parent's thoughts on school placement.
- Transport to Inchtute = increased pollution.
- Mothballing does not really seem appropriate given that it would likely end in closure if we only have 3 years to 'boost' child numbers would be fab to keep the school open.
- Please do not or we will be so sad.
- Not an option which would be beneficial to children.
- Not supported by me as a president and parent. There has been a school in Abernyte for 200 years, over 100 in the building. Children from here are successful in their lives. Perthshire is growing. P&K should think bigger and more positively and build upon the success they already have.
- It's important for our Rural kids to keep a sense of community so to have both schools is an important focus for both community.
- Would not be a positive move. No benefit to the community.
- I am new to the community (June 17) and live at the back of the school. I am very aware of the vibrant atmosphere in and around the school – children and

adults and sport/natural learning environment is excellent. It is a real community school and highly valued as such. Mothballing would be on the way to closure. Multiple community use would work. This is a very creative village.

- Mothballing would be the worst option as it would mean the school was not available for either the children or the wider community.

Comments received at the drop-in session

Option – Consider closing the school – pupils moved to a neighbouring catchment school

Comments

- I think that the children would benefit moving to a more vibrant school – social skills, friends etc. It would be a great pity to see the school removed from Abernyte but surely we should be thinking of the children.
- Financially attractive – improve efficiency to boost Inchtute Primary.
- Closing the school would have a very adverse impact on the wider community of Abernyte as it is the focal point of the community. The wider community are very supportive of the school and attend many school activities.
- Damaging to a vibrant community. History is also important; there has been a school here for a very long time.
- Loss of heart of community.
- Would be a huge loss to Abernyte as a community – no place to meet.
- The worst possible option for the community – loss of school & loss of a wider valuable community resource, especially given the building is in relatively good condition. This option should not be taken any further.
- This option for the school denies parents and children in this area choice in their education. I feel it would have a detrimental effect on the local community and may further reduce the viability of the village.
- Abernyte PS has always been a ‘community’ school, which has provided many poised young people who have benefited from the ‘small is beautiful’ ethos. Could Abernyte & Kinnaird children start their education here & only move to Inchtute PS for 2-3 years before they start secondary school?
- I should hate to see the school close. Better idea – children in current catchment attend Abernyte.
- Silly idea. Perthshire is growing. There is building in Abernyte. Neighbouring schools despite some investment are bursting at the seams and further building is expected.
- Not in favour because Abernyte School is a focus for the local community, but if the decision is taken to close this school. Alternative uses for the building should be sought (see other options).

- Consider merger with Collace to preserve 'village' school benefits. Village schools have certain unique attributes which schools be preserved across P&K.
- The school is not just a school but the hub of the whole community and therefore should not be closed. Moving children to neighbouring catchment area would be detrimental to their education and could over populate another school.
- The school is the hub of the village. My husband and I only met other residents through my granddaughter attending the school. The school is used for the whole of the village.
- If the school closed there would be nowhere for the members of the community to meet.
- Would like Collace to be considered.
- I don't drive no bus service and have a little one.
- Would be very regrettable but if it came to that would there be any future for Abernyte School as an alternative educational premises – special needs or similar.
- Terrible idea! More time on bus for kids. Days lost to snow/weather due to longer journey. Less family time. Loss of community/centre of village.
- No more bike to school days.
- No more walk to school days.
- Increased pollution from transport.
- Closure – no. creative specialist usage – learning support, dyslexic work etc for the whole area preferred.
- This would be very unpopular with Abernyte. Surrounding schools are full or close to full and Abernyte might be considered as overspill for there. Closing Abernyte PS would lead to a loss of identity for children currently attending Abernyte.

Comments received at the drop-in session

Option – Catchment area is reviewed to determine whether this would increase the school roll sufficiently to ensure the future sustainability of the school

Comments

- I believe the only fair action is to make the Inchtute/Longforgan/Abernyte catchment areas shared. This would be beneficial to the large & smaller school & provide more choice to the parents/children. The schools are vital parts of the community & must be protected to ensure life into rural communities.
- I feel that Abernyte Primary School has an important part to play in the life of their area. The numbers at the school would increase sustainably if the catchment area was enlarged and children living on this side of the dual carriageway came to Abernyte.
- I also feel that the children in this area are 'country' children and could thrive and be happy in this environment and subsequently achieve better
- The current catchment areas are a real puzzle and have definitely contributed towards low numbers at Abernyte PS. A change would take some years to implement but would be of great benefit to Abernyte.
- Widening the catchment area to include rural communities to the north of the A90 would make sense due to close ties between those communities and Abernyte.
- Slight increase may trigger children within the community elsewhere to consider coming to Abernyte.
- This has always felt obvious in previous conversations however the response has included 'too difficult', 'we need new laws/agreement of Parliament'. Catchment should be reviewed and a long term view taken.
- Catchment area always was a view and could be bigger as one school is full and the other needs more but working together would help solve things.
- This is the best option and we have been lobbying for this for over 10 years. The current catchment is ridiculous. Unfortunately this is all too late!
- If the catchment area could be changed & parents in new area willing to use Abernyte School that would be a possible solution – what area would have to be included to make viable numbers?
- This must be considered along with dual catchment. Consultations should go ahead on this option.
- We love this! Please extend the catchment area! We moved to Abernyte just a year ago as we loved the small community, especially the school!!!! It is such a welcoming school, we have attended so many events here and the staff & pupils are wonderful!
- A great option to explore! Give folk a choice!

- Yes. I think this should be done – creatively.
- Increasing the catchment area would help keep the numbers up, include Kinnaird.
- This is my preferred option but I am unsure how quickly it could bring more pupils to Abernyte if pupils are already settled in other primary schools.
- Keep the school. Bus driver could take children to/from Abernyte – Inchturre for 8-9am slot and after school.
- My daughter has excelled since she has been at the school & I would like my son to go to Abernyte when he's old enough. If changing the catchment increases numbers that would be great.
- Catchment area reviewed. Abernyte & North of the Tay combined. Encourage the 'ten' pupils who go to Inchturre to come to Abernyte. Start a breakfast club & after school club (that's some peoples view).
- This is the best option. This school would provide an amazing education for a whole population of rural children & unite local communities into a tight knit village with a special quality.
- Add catchment area North of the A90 and make the 'added section' a dual catchment for 7 years before it becomes part of Abernyte permanently. This will allow a transition period where parents can choose to send to Abernyte in advance of a permanent change, while allowing those wishing to continue in Inchturre to do so.
- Review catchment. Also have a nursery class to enable good community bonds. Shared headship could bring savings. Living & schooling in rural community builds skills for working rurally later on in life.
- Needs to be a positive choice to come to Abernyte.
- With growth of Inchturre population, may be helpful to have an additional smaller unit – available to Abernyte and all the other catchment areas surrounding.
- Perthshire's population is growing. Schools close by are also full. A successful school and community should be a clear reason for encouraging the school to grow by a catchment change.
- Review catchment – the 'least bad' option & for definite consideration. Opens up several possibilities & would be done in conjunction with considering the school as a wider community resource which can be used for other activities.
- Keep in mind how the school can be used by the community – nursery, somewhere for teens to meet when reviewing catchment.
- Only reason community is behind 'dual' change is because we thought it would be easier for Inchturre parents, but our best option is full catchment changes.
- Perhaps a community enterprise set up to run breakfast/after school clubs for working parents. REVIEW CATCHMENT.
- Would like to see this option go forward. Abernyte needs the school and we should be doing everything to keep it.

- The option to review the catchment maybe a real positive to keeping the school and community alive.
- This would be my preferred option and as more people came and advertised that the school could give excellent one-on-one education.
- Why not include Collace too?
- Review catchment area. Community needs a school not just pupils. We have no village hall.
- Well worth reviewing. Evidence: not easy to gather, but must be possible to increase numbers significantly.
- 240 new houses at the airfield, more planned at Inchtute.
- Make use of everything invested in school so far.
- If you reviewed catchment what would happen to other schools eg. Catchment areas not the same for secondary schools, eg Perth High, Blairgowrie High and Perth Academy.
- Scottish Governments rural schooling!!

Comments received at the drop-in session

Are there any other options that you would like to propose for the school?

Comments

- Open a nursery. Shared head to save money (with another school). After school club to enable working parents to use this school.
- Is a new primary school (public/private partnership) completely out of the question? Again could provide a wider resources for the Carse of Gowrie and Braes of the Carse area.
- Pump in more money – after school club & nursery to avoid use of other schools – if not close school and re-invest funds to boost Inchtute.
- Utilise as a ‘special needs’ centre in some way to give a resource for wider needs in the Carse of Gowrie.
- Nursery. Use school for community events to raise money. Share school clubs in Inchtute. Affordable housing. Increase catchment.
- Better communications for catchment and after school club and a good head teacher driving force, and there is no community hall so we use the school.
- Catchment area as my daughters little girl lives in Ballindean and wouldn't get transport to this school.
- The building is used regularly for a range of community events and its closure would lead to the death of the village.
- Combining Inchtute & Abernyte Schools & have P1/2 at Abernyte or P6/7. Provide school transport for this.

- If possible an after-school club and/or breakfast club would help parents who work in Dundee.
- There should be a bigger bolder strategic long term plan. This feels last minute. That plan should include the importance of supporting successful communities. Primary education is not in isolation.
- Introduce pre-school nursery provision as there is space within the school to do that.
- Please review village population in 12 months – 3 houses currently for sale & 4 new builds planned.
- Dual catchment to use facilities for reducing class size & improving education. Additional support in nursery, after school club would all help viability for working parents.
- Additional needs support centre – access to outdoor areas quiet/safe environment for children with additional needs.
- Maybe to share the school with another catchment like Inchtute and eg. P7 would come to Abernyte and P1-P6 in Inchtute.
- Potentially use the school for other educational uses given its excellent rural location and outdoor space.
- Scottish Education has not improved in the last few years. This could be a great opportunity here, working with schools like Inchtute, Longforgan and Errol. Giving children the choice (parent can decide)/possibility to come to Abernyte and smaller classes. This would then also reduce their class sizes (Inchtute, Longforgan, Errol) and help improve learning (through smaller class sizes).
- Potential option could be ‘partial’ mothballing – only utilise part of building so that money could be saved?
- Resource for children with ‘special needs’ – ie, psychologist, speech therapist, behavioural problems etc. sessions for ‘extra’ educational activities when Abernyte teacher finds difficulty in coping with. Resource area & meeting place for advisory teachers. Utilisation of the wonderful rural environment.
- I am new to the village – June 17. This is a very creative, dynamic village, through the younger families are spread out. The school would and indeed is a central part of the modern community. Could we develop facilities that are not available in other local schools eg a learning support centre – dyslexia, general learning support with materials/resources and advice available from teachers have who could go out to support/advise teachers in the other schools who have children attending part time for the specialist work. Adult poetry, literacy and numeric evening classes/groups/ with an organising committee pulling in specialist as needed. This could lead to performance activities and involve children from all of the schools.
- School exchange scheme? Students currently at different schools get to experience what it’s like to attend Abernyte Primary.

- I have made friends & now there family here & I have made hundreds of memories here.
- Promotion. Positive recruitment.
- Change the catchment area.
- A teacher at Morgan Academy – 1990's, early 2000. Said they always knew a pupil from Abernyte as they were confident + more mature than their peers from other schools.
- Maybe Perth council could consider other ways of saving money rather than closing schools. I'm sure small, rural communities are important to governments too – please extend the catchment area 😊
- One option I feel that could help the schools pupil numbers is the introduction of a nursery class. If children go to Inchtute for nursery they move very easily into infant classes.
- Smaller classes can be beneficial to education – promoting this
- Base for peripatetic staff and staff such as education psychology. Base for other PKC rural activities (it is a sound building with ample parking).
- Increase the catchment area pre and after school facilities. This school is the only public place to meet – no village hall.
- Adult education, centre for community rural education, rural resource centre.
- Special education unit where small classes essential. Community hub underwritten by PKC.
- Think of a better way to do this review. Even being on the list is negative for all the schools involved.
- I question number 44 as the no of pupil places there can be here, I suspect this needs reviewed and is in fact lower, as some point schools need a rebuild. The model of school beside/as part of sheltered housing has been successful in other countries.
- Start a nursery class to get children to come.
- Keep a community resource available – perhaps it can be used during the day for retired community members.
- It is essential for the community that the school building continues to be used. Ideas might include (if not a P.S) an educational resource centre, outdoors education centre, special needs hub. The school building is the only community building within the village.
- Consider options for children with special needs eg Asperger's where a small school would be beneficial

Comments received at the drop-in session

How would you describe the community and what are your thoughts on Abernyte Primary School as part of the community?

Comments

- The school is central to the community – friendships formed here have strong foundations and carry on into secondary school and later life.
- Our community is loving & kind. The school is fun & educational.
- The school is a vibrant and essential part of Abernyte. Its community centres around the children who are the future.
- All countries need robust communities. This suits here and should be nurtured by a Council. P&K cannot control Post Offices, shops, pubs, they can support schools.
- Children very much part of the community very caring towards elderly who are welcomed into school on special occasions.
- Lack of children – a. housing – too expensive. B. retired professionals move into area. C. many NHS workers who require after school clubs. D. extremely difficult to appoint staff who are prepared to incorporate all new teaching methods & materials. E. no boys – mean boys now go to Inchtute.
- The school is an important (the only) meeting place for other members of the community – AGMs & potluck suppers – Wine Club – Mary Young lectures – Garden club talks – Community Interest Company.
- Very strong and vibrant community. We all know each other. Many activities together at all levels. A sense of ‘pride’ exists in the area.
- Past pupils stay in the area and are successful. Even the ex-teachers stay in the area. The key annual events all happen at the school. It is the hub. Support to rural communities is an intermittent issue, definitely a Scottish issue. Keeping the school open and helping it to grow could demonstrate such a commitment.
- Many activities take place in the school bring all the parent, grandparents etc together. Strengthening the community.
- Great community to live in.
- Friendly community – school has declined in importance within the community – high input by Headteacher necessary to revive interest.
- Council houses: 3 social housing: 2 years ago 1 was vacant (3 bedroomed family house). Allotted to a couple & their 26 year old daughter – all in work – expensive cars!! No interest in the community. Definitely NOT homeless. Housing dept. very defensive.
- No village hall or other central meeting place. Inchtute village hall always booked. School bookings expensive.
- Very strong community and the school has always been at the heart of that community. The children who go through this school come out as confident,

able, motivated pupils when they move onto secondary school. They give back to the community. Families make the community what it is.

- I would consider Abernyte a viable, vibrant community, every community needs a central focus & loss of the school could have a significantly detrimental effect to the community in the long term.
- The children raised & educated in Abernyte always hold it dear. A fantastic personal education and a real community to instil values in our kids.
- The school helps hold the community together. It's where people meet.
- As an ex-pupil I will be forever grateful for my primary education here and would be desperately sad if the same experience were to be denied future children of the village.
- As a resident of the neighbouring village, Kinnaird, I have always been impressed by the dynamic & creative community that exists in Abernyte. For a small rural area, Abernyte supports a wide range of creative activities. I'm sure this starts with the school and its pupils. Over the years I have seen several of the children grow up to have outstanding educational achievements.
- Abernyte in the 40 years I have been part of it in my opinion always had the school at its heart.
- Abernyte is a small rural community. The school provides a centre and help children and adults have a sense of community. The children in the school are confident in a familiar environment.
- Abernyte School is the centre of a very rural area and is the equivalent of the village hall as well. In the 40 years we have been here it has been the focal point of many activities.
- Abernyte Primary is part of a very dynamic and creative village with many talented people. I am new to the village. I think this creative linkage could be developed massively to mutual advantage. It needs creative thinking and planning – and leading with expert council input, but the future to the whole area could be transformative, educationally, socially, culturally.
- Abernyte School is essential to this amazing community. The school & events held here are the heart of the village. The fantastic charity raising events that are put on often more than 200 people from around the area attend & support these events.
- The school is the only building in Abernyte open to the whole community. Without the school there would no community events as there would be no toilet facilities for events & the playing field. This would have an impact on the whole community and increase loneliness and social isolation.
- Lots of lovely people we would not now at all without school.
- A. the school is let for approx. 12 bookings throughout the year – residents tend to go to Perth/Dundee for entertainment. B. tenants of farm cottages tend to work in Dundee – children go to 'Granny's' after school.

- The community revolves round the church and the school (the shop closed some years ago) we are a very active community and very supportive of the school – primarily for the children but also as a community building.
- Abernyte community is a rare thing in our modern world. We remain a tight knit & close community looking out for each other. Despite the population aging we remain active & vibrant. The school is a central part of the community & the children involved in almost every community activity/group.
- Although I have no children at the school, the school is central to our lives in Abernyte. We are welcomed to school events which are enormously imaginative and stimulating. The school is central to a very friendly community
- If the school goes slowly the community will die!
- Easy interaction between the age groups begins at school and continues in communities.
- Core of the community.

Comments received at the drop-in session

What do you think are the reasons the school roll is so low?

Comments

- That improved numbers would see more locals bring their kids back to the school.
- There is a lack of affordable housing for young people with families.
- There is no formal advertising or encouragement for people in the catchment area to come to Abernyte. New people moving into the area are not encouraged to bring their children here.
- No boys in the school. School has become too small, no nursery, no after school club for working parents.
- The boundaries are perhaps too small. Catch 22 – parents feel it's too small – if everyone sent their children here that felt this way it would be bigger. Not enough done by the school/community to attract pupils. Aging population, expensive area to live. No new builds. No nursery or after school care.
- Pre-school provision is currently at Inchtute Primary School, which means that children and parents (from outside catchment area) are less likely to consider a move to a different primary school.
- No after school provision could be an issue for working parents.
- No nursery. Catchment is terrible – hardly anyone lives in it! No boys at the moment. Affordable housing is non-existent. After school – kids could get existing bus to Inchtute.
- Very few new houses in area which mean not a lot of young families equals no children. Low school roll.

- Population of the village has aged & everybody moves here for life as it's a wonderful place to live. The young families left have now put children to other schools as the population is low – a change in the catchment area.
- Change in pupil balance eg, no boys.
- Parents think school too small and doesn't have facilities.
- For the past ten years there have been rumours of closure – so parents don't start their children here.
- Lack of affordable housing.
- No after school club.
- Roll is low due to size of catchment, lack of affordable housing, transport issues, lack of child care, after school activities, breakfast clubs etc.
- Lack of social housing. House prices too high for young people. Agricultural practises. Villages turning into dormitories not communities.
- Small catchment area with no other villages included in the Abernyte catchment area. Council houses not prioritized for families to help increase school roll & provide rural life for children.
- Could be a blip. Perthshire is growing.
- School roll is low due to an odd catchment area. Some of the natural catchments for Abernyte are directed instead towards Errol or Inchture Primaries.
- By chance the population is a little older than new build areas. This will change again in the future. There are new houses going up in Abernyte.
- Too many people use private schools that live in the area. Lack of affordable housing. Incredible lack of forward planning by the council, despite constant reminders from community about what was happening.
- When the council house was vacated by a school using family, it was not repopulated with a family. NONSENSE!!!
- Lack of action/help from council. Parents & community members have been suggesting ideas & options for years & no help at all has been given. Rural communities need to be supported.
- Abernyte itself has changed in demography. If catchment is just immediate area not enough affordable housing for young families.
- Lack of breakfast club and after school activities.
- The main reason I feel that the school roll is low is the small catchment area.
- Private schools for after school clubs as most people ask so if an after school was an option and better communication so people that live around the area.
- There are several families with young children below pre-school age who may want to attend in the future. The catchment area is very small.
- Previously children from outside the catchment area (Baledgarno and Ballindean) travelled to attend the school. If the catchment area were extended it would support families travel to the school?
- No plans for development in the area.

- Mainly because the Council has not supported catchment change in the past
- I think we need new ideas to support schools in rural communities. Schools are important to forge relationships and make communities – not just a collection of people. 1. Look at ways to help families – access breakfast and after school clubs. 2. Interaction between schools and wider community – volunteers to help eg sport, gardening, nature studies. 3. Families moving to area – welcomed and encouraged to visit school. 4. Schools reaching out to community and community receiving it. 5. Groups accessing school outside hours – find it invaluable to have a meeting space in community. What happens if it goes??
- General population not having large families any more not just Abernyte, also farms and estates now are high tech and employ fewer labourers and therefore families. Many people especially mothers travel to work and I suspect perhaps choose a school more convenient to work at start and end of the day. Not certain how relevant this is. I am new here.

Email received:

Hi,

I intend to be there on the 4th if I am able, however if not then I feel I should put my views to you.

We live near to the Village of Abernyte and have 2 sons V. and V..

We had hoped to send our children to Abernyte primary, however when we visited the school prior to our year old enrolling, and discovered that even at that stage there were only 8 in the school and they were all girls we felt we could not. He would have been the only new start that year in a junior class of 4 girls. He had been to nursery at Inchtire, and made many friends, and whilst we were more than prepared to take him away from his friends we could only do this if there was a potential to make new friends of both sexes and of his age. This was clearly not going to be possible at Abernyte. We therefore took the decision to place him at Inchtire. This resulted in preventing my wife being able to return to work in order that we could drive him to school and pick him up each day (not to mention the cost of doing so). Since then Abernyte primary has dropped to a single class of 5 girls.

I know that the education is very good at Abernyte; however the cost per student must be astronomical.

As far as I can see there are more staff than pupils, whilst Inchtire has struggled to afford reading books for kids.

This is an emotive subject I am sure, but surely it is time to close or mothball the School, and divert the funds to a successful modern school with great 'new' facilities.

The catchment area of this school was vastly reduced some years ago by the council and that is what triggered the demise in the school role.

There are MORE kids in the catchment area attending Dundee High (primary) due to the fact that their parents work in Dundee and the High School, unlike Abernyte provide an after school club.

With no nursery class and no after school class Abernyte Primary has become the typical Dinosaur.

Email received:

I was not able to make the Community liaison meeting last Thursday at Abernyte School, but understand that I can put forward my views to you direct. I am the Aunt to a PV. pupil at Abernyte. In addition my family will be moving to Abernyte in the next few months with our ..yr old, .. yr old & .. yr old children.

I fully support the option to review the catchment area with a view to expanding it and increasing the roll at the school.

Why chose the catchment area option?

(1) It is efficient use of existing resources: looking at the mid-to-long term school capacity requirements for the entire Carse area, it makes sense to utilise Abernyte School to relieve the pressure on school places in the Inchtute/Errol areas. Abernyte School is a well maintained, high achieving school and is ideally placed to help manage the mid/long term capacity requirements of the growing Carse region. To further expand again the Inchtute/Errol school buildings would require capex approval, which is in short supply. Improving the Abernyte catchment area to include rural villages that currently go to Inchtute or Errol would make efficient use of existing resources.

(2) It supports the Curriculum For Excellence: Abernyte is consistently highly rated, offers an excellent standard of education, produces confident individuals, caring members of the community and is a shining example of how rural schooling should be delivered. Music, arts, safeguarding the environment, caring for the community, health & wellbeing, teamwork and charitable activities are all promoted as much as excellence in traditional academic subjects. Individual pupil requirements are met to ensure all are successful learners. All pupils have the opportunity for personal achievement and independent thinking is encouraged. The ethos and life of the school is amazing and there are absolutely no educational grounds on which to choose the other options (all of which effectively mean the school closes).

A decision to expand the catchment area needs to be taken as soon as possible to safeguard the future of this brilliant rural school located in the expanding Carse district.

Any comments on other options:

All other options mean that the school closes, which is a massively short-sighted decision in an area of P&K where population is growing and Inchtute & Errol schools are going to struggle for capacity (if this isn't already the case in P1 classes). Concerned parents contacted the council 5 years ago to ask for a catchment area review to keep the school at 2 classes. This request was ignored and we are now at a stage where action needs to be taken as soon as possible to attract and maintain the quality teaching staff that Abernyte is used to.

Email Received:

I much enjoyed meeting you this evening and can I congratulate you and your colleagues for the way in which you are approaching your difficult task. Your materials were also very clear and helpful.

I am writing as an Abernyte resident but also as a member of the House of Lords Social Mobility Select Committee until April last year. The Select Committee was naturally immersed in the very issues on which you are advising the Perth & Kinross elected members.

What was clear to us was that action that results in improving life chances begins very early educationally and that the schooling environment in earlier years had a direct and verifiable impact on outcomes. Two aspects of that environment were the built environment of the school and the length of the journey to get to it. In terms of journey time we took very stark evidence that where journey times were longer the reduction in engagement led to poorer outcomes especially among the lower achievers of a cohort. Long journeys to school have a detrimental effect on life chances.

The school in Abernyte is a wonderful example of a built environment of great merit. The pupils in its current catchment area travel very short distances. These are the very ingredients that would promote life chances and good outcomes for pupils.

Accordingly it does seem to me that closing the school and asking the pupils to move elsewhere might have a positive economic result for the Scottish Government/PKC but that could come at a personal cost to those pupils concerned. Only the most hard hearted would not want to explore every avenue to prevent that and indeed take a reasonable alternative path.

The suggestion that the catchment area for Abernyte School is enlarged would seem to me to be that reasonable alternative path. Indeed local geography suggests to me that it is wholly likely that new pupils involved would have a shorter journey and would be able to benefit from the fine built environment of the school.

But the thrust of what I am saying is that the Social Mobility aspects of not only Abernyte School but the whole series of difficult decisions (and what a long list of

schools that was) are very much ones that Elected Members should consider alongside the economic ones.

In closing I realise that one of the main reasons that I have taken the time to write is the vibrant spirit and happy tone of the School.

Appendix 2

The Scottish Index of Multiple Deprivation (SIMD) identifies small area concentrations of multiple deprivation across all of Scotland in a consistent way. It allows effective targeting of policies and funding where the aim is to wholly or partly tackle or take account of area concentrations of multiple deprivation. SIMD provides information to help improve the understanding about the outcomes and circumstances of people living in the most deprived areas in Scotland.

SIMD ranks to quintiles, deciles and vigintiles. Quintiles split data zones into 5 groups, each containing 20% of data zones. The lower the quintile the more deprived the area.

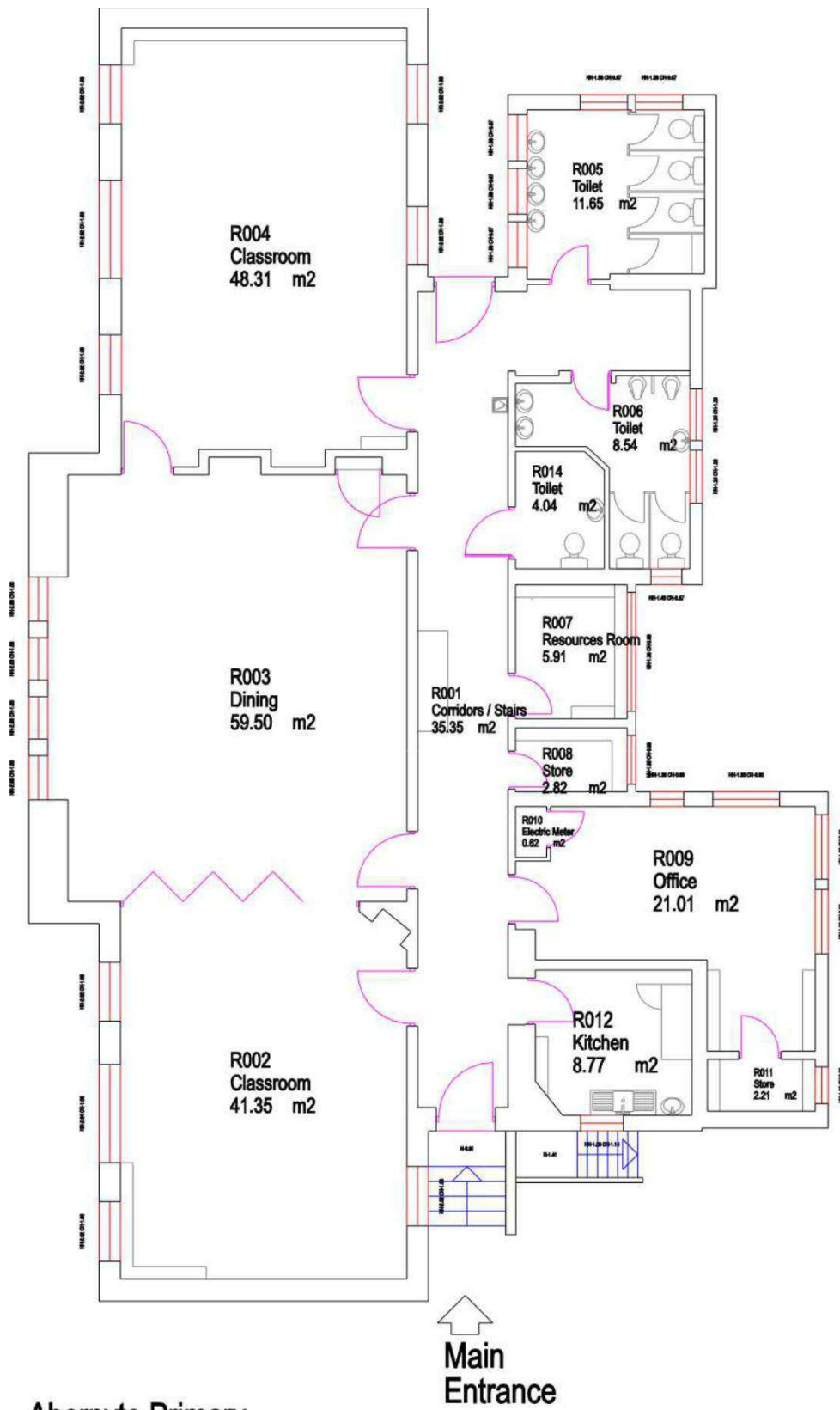
ACORN is a well-developed segmentation tool which categorises the UK's population into demographic types. Acorn segments households, postcodes and neighbourhoods into 6 categories, 18 groups and 62 types, based on a range of different data collected in many ways.

ACORN is used to understand life and living conditions, lifestyles, behaviours and attitudes and can therefore help inform the public service needs of neighbourhoods and households.

There are 5 categories ACORN reports on; Category 1 Affluent Achievers, Category 2 Rising Prosperity, Category 3 Comfortable Communities, Category 4 Financially Stretched and Category 5 Urban Adversity.

Category 5 indicates the level of deprivation within an area.

SIMD and ACORN are based on address.



Abernyste Primary
Main Building
Ground Floor

Appendix 4

Current revenue costs for school proposed for closure			
Name of School: Abernyte Primary School (Column 1)	Costs for full financial year (2017-18) (Column 2)	Additional financial impact on receiving school [Inchtire] (Column 3)	Annual recurring savings (column 2 minus column 3) (Column 4)
School costs			
Employee costs -			
teaching staff	£ 76,098.00	£ -	£ 76,098.00
support staff	£ 17,907.00	£ -	£ 17,907.00
teaching staff training (CPD etc)	£ 238.00	£ -	£ 238.00
support staff training	£ -	£ -	£ -
Supply costs	£ 1,335.00	£ -	£ 1,335.00
Slippage Target	-£ 2,495.00	£ -	-£ 2,495.00
Building costs:			
property insurance	£ -	£ -	£ -
non domestic rates	£ -	£ -	£ -
water & sewerage charges	£ 191.00	£ -	£ 191.00
energy costs	£ 3,698.00	£ -	£ 3,698.00
cleaning (contract or in- house)	£ 7,623.00	£ -	£ 7,623.00
building repair & maintenance	£ 5,589.00	£ -	£ 5,589.00
grounds maintenance	£ 437.00	£ -	£ 437.00
facilities management costs - note 6	£ -	£ -	£ -
revenue costs arising from capital	£ -	£ -	£ -
Other	£ 684.00	£ -	£ 684.00

School operational costs:			
learning materials	£ 552.00	£ 248.40	£ 303.60
catering (contract or in-house)	£ -	£ -	£ -
SQA costs	£ -	£ -	£ -
other school operational costs (e.g. licences)	£ -	£ -	£ -
Transport costs: note 3			
home to school	£ 8,458.80	£ 11,574.80	-£ 3,116.00
other pupil transport costs	£ -	£ -	£ -
staff travel	£ 470.00	£ -	£ 470.00
SCHOOL COSTS SUB-TOTAL	£ 120,785.80	£ 11,823.20	£ 108,962.60
Income:			
Sale of meals	£ -		£ -
Lets	£ -		£ -
External care provider	£ -		£ -
Other	£ -		£ -
SCHOOL INCOME SUB-TOTAL	£ -		£ -
TOTAL COSTS MINUS INCOME FOR SCHOOL	£ 120,785.80	£ 11,823.20	£ 108,962.60
UNIT COST PER PUPIL PER YEAR (6 pupils)	£ 20130.97	£ 1970.53	£ 18160.43

Annual Property costs incurred (moth-balling) until disposal	
property insurance	£ -
non domestic rates	£ -
water & sewerage charges	£ 150.00
energy costs	£ 600.00
cleaning (contract or inhouse)	£ -
security costs	£ -
building repair & maintenance	£ -
grounds maintenance	£ -
Other	£ -
TOTAL ANNUAL COST UNTIL DISPOSAL	£ 750.00

Table 4

Non-recurring revenue costs	
	£ -
TOTAL NON-RECURRING REVENUE COSTS	£ -

Table 5

Impact on GAE	
based on pupils going to Inchtute PS	£ 18,840.00
GAE IMPACT	£ 18,840.00

Notes

1. The total costs incurred for teaching staff (row 5) and support staff (row 6) are required to be included. Column 2 should include the current costs for a full financial year for the school proposed for closure, and column 3 should include the *additional* cost to the receiving school as a result of staff transferring.

For teaching staff, this should include regular teachers, itinerant teachers, learning support teaching staff and special education (ASN) staff. Itinerant teaching staff includes central support services such as English as additional language support, hearing, visually impaired services, educational psychology services.

For support staff, this should include classroom assistants, administration staff and janitorial staff.

For all staff the costs entered should include salary, NI and pension costs.

If the school proposed for closure has less than 3 staff members, then the cumulative staff costs only should be given in row 5 (for both teaching and support staff), so as to avoid possible disclosure of individual salaries.

Training costs should be identified separately in rows 7 and 8.

2. Supply costs to cover teaching and support staff. This may be held in a central budget, be devolved or shared across the budgets.

3. 'Home to school' pupil transport costs should include those school transport costs incurred in accordance with Council policy. 'Other pupil transport costs' will cover costs incurred for the transport of pupils for activities such as swimming etc

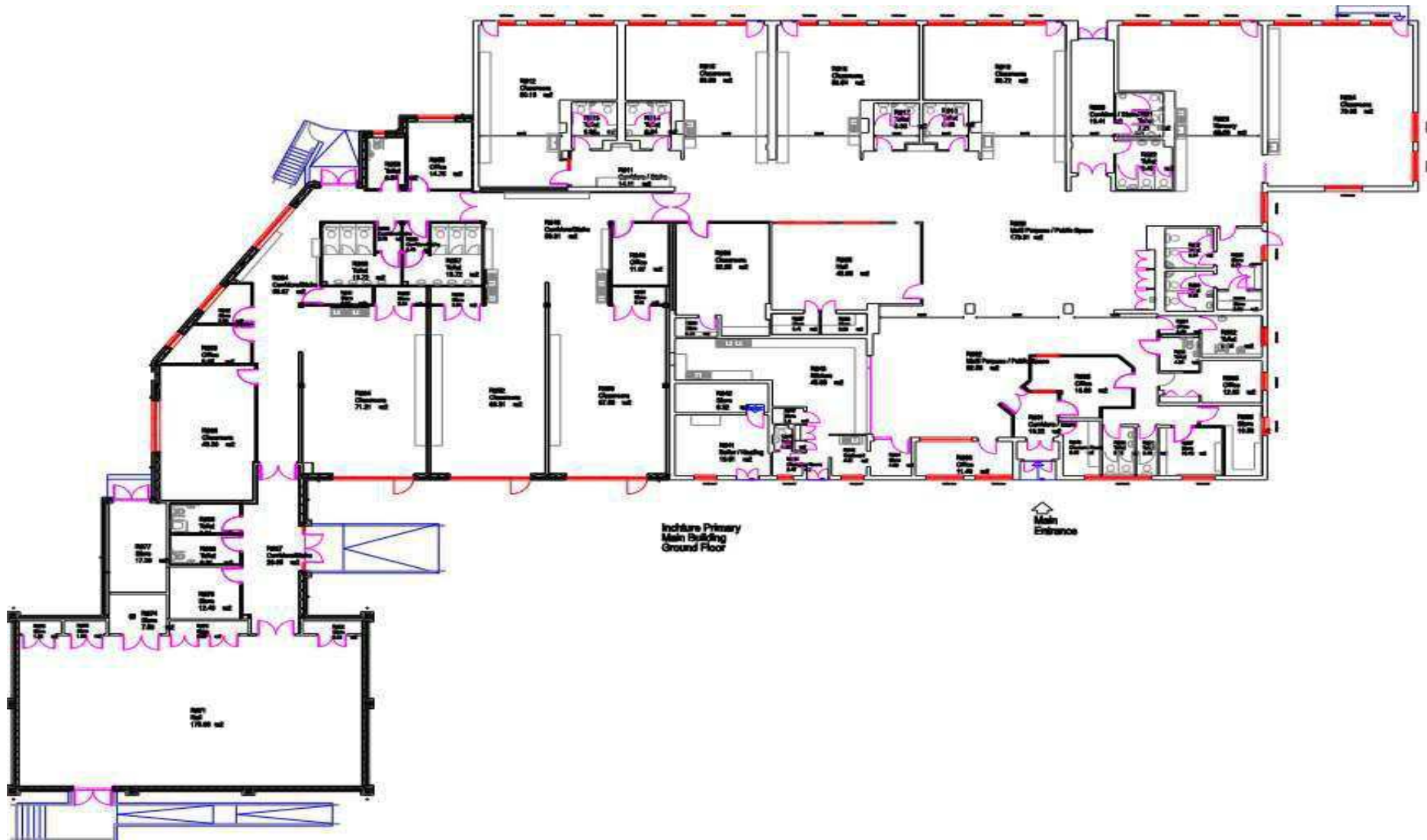
4. Row 30 of column 3 should include the additional transport costs related to the increased home to school transport arrangements that are put in place in accordance with Council policy. This figure is therefore likely to be considerably higher than current costs.

5. This table is to capture the impact on the revenue support grant as a result of changes to GAE

6. Facilities management costs will include costs related to caretaking, janitorial and security.

7. The capital costs for the receiving school should be taken across the life cycle of the school in line with the life expectancy of that school.

The capital costs for the school proposed for closure should be taken across the same life cycle period.



Appendix 6

A mapping analysis of current pupil addresses from within the Abernyte Primary School catchment area has been carried out.

There are a number of Primary School catchments adjoining Abernyte Primary School including Balbeggie Primary School, Burrelton Primary School, Collace Primary School, Inchtore Primary School, Kettins Primary School and Longforgan Primary School.

Abernyte Primary School pupils travel to:	Distance⁷	Journey Time⁸	Summary
Balbeggie Primary School	6.8 miles	13 minutes	Pupils travelling to Balbeggie Primary School from Abernyte Primary School catchment pass the road to Collace Primary School. This is further to travel than travelling to Collace Primary School. Therefore Balbeggie Primary School is discounted.
Burrelton Primary School	8.2 miles	15 minutes	Pupils travelling to Burrelton Primary School from Abernyte Primary School catchment would have to pass through Collace Primary School catchment area. Therefore Burrelton Primary School is discounted.
Collace Primary School	5.5 miles	11 minutes	Collace Primary School is the third closest school to Abernyte Primary School. Pupils from Collace Primary School attend Perth Academy and Abernyte Primary School along with all of the Carse of Gowrie schools attends Perth High School. Collace Primary School is Discounted due to being part of a different geographical community and being in a different Local Management Group.
Inchtore Primary School	3.4 miles	8 minutes	Inchtore Primary School is the closest school to Abernyte Primary School. Pupils from Inchtore Primary School attend Perth High School. This is the preferred choice due to distance.
Kettins Primary School	6.9 miles	14 minutes	Pupils travelling to Kettins Primary School from Abernyte Primary School catchment would have to pass through Burrelton Primary School catchment area for the quickest route to the school. Therefore Kettins Primary School is

| | | discounted. |

⁷ Approximate distances taken from Google Maps

⁸ Approximate journey times taken from Google Maps

Longforgan Primary School	4.4 miles	9 minutes	Pupils travelling to Longforgan Primary School would have to pass by Inchtire Primary School catchment area for the quickest route to the school. Therefore Longforgan Primary School is discounted.
---------------------------	-----------	-----------	--

From the analysis provided the schools that would not be considered would be Balbeggie Primary School, Burrelton Primary School, Kettins Primary School and Longforgan Primary School. This is due to pupils having to travel through a school catchment area to get to another primary school.

Inchtire Primary School is the preferred option as the current Abernyte Primary School pupils live geographically closer to Inchtire Primary School than Collace Primary School.

The number of school days lost for all these schools has also been considered as part of the analysis. At February 2018 no school has been closed more than 3.5 days (Abernyte Primary School and Collace Primary School) since 2011. The school closures are mainly due to high winds and loss of power.

Meetings with Families

Action	Comments
<p>Contact made with Headteachers at;</p> <ul style="list-style-type: none"> • Abernyte, • Inchtire, • St Madoes, • RDM, • Errol, • Invergowrie, • Kettins, • Longforgan, and • Manager of service at Red Squirrel Nursery 	<p>Council Officers spoke with Headteachers to discuss the process involved in regards to the further assessment of the catchment area for Abernyte Primary School and confirm contact details.</p>
<p>Monday 30 April 2018</p>	<p>Council Officers met with Chair of Parent Council, Abernyte Primary School.</p>
<p>Wednesday 2 May 2018</p>	<p>Council Officers met with Chair of Parent Council, Inchtire Primary School.</p>
<p>Thursday 17 May 2018</p>	<p>Session 1 at Abernyte Primary School, 6 appointments booked (1 no-show).</p>
<p>Wednesday 23 May 2018</p>	<p>Session 2 at Inchtire Primary School, 5 appointments booked (2 no-show appointments – 1 no-show contacted the Council Officers via phone call).</p>
<p>Thursday 31 May 2018</p>	<p>Session 3 at Inchtire Primary School, 4 appointments booked.</p>
<p>Phone calls received</p>	<p>Council Officers spoke with 2 families via telephone and completed the questionnaire.</p> <p>1 family spoke with the Headteacher at Inchtire Primary School to pass on views.</p>

Questionnaire



The information you provide during this meeting will be used within the options appraisal. All information will be anonymised to ensure no individuals can be identified. A summary of the feedback received will be included within the options appraisal considered by Lifelong Learning Committee in August 2018.

1	Parent / Carer Name				
2	Address (including postcode)				
3	Child or Children's Name (including any children that are not yet currently attending nursery or school)	Child 1	Child 2	Child 3	Child 4
4	Child or Children's Postcode (if children do not all live with you)				
5	Child or Children's Date of birth (including any children that are not yet currently attending nursery or school)				
6	School year group or nursery stage (E.g. pre-school or anti pre-school) of each child.				
7	What is the catchment school for your address?				
8	What school or nursery does your child or children attend? (if any children do not currently attend nursery or school please stipulate your preference of where they would go and when – assuming we were not looking to review the catchment)				
9	As a parent/carer what is most important to you when choosing which school your child/children attend?				
10	<p><i>(Parents/Carers of children living north of A90 in Inchtute Primary School catchment area and Abernyte Parents/Carers whose children attend other schools).</i></p> <p>If your catchment school changed to Abernyte Primary School would you send/enrol your child to Abernyte Primary School?</p>				

	(a) If the roll remained <u>less than 10 pupils</u> over the next 5 years (including your own children)				
	(b) If the roll was <u>between 10 and 18 pupils</u> (i.e. a single class school) over the next 5 years (including your own children)				
	(c) If the roll was <u>19 pupils or greater</u> (i.e. more than one class) over the next 5 years (including your own children)				
11	Are there any other considerations that would affect your decision to send/enrol your child at Abernyte?				
12	<i>(Parents/Carers of children attending Abernyte Primary School currently).</i> Are you in favour of the catchment review?				
13	Do you have any other comments in relation to your response?				

Signature Date

Frequently Asked Questions

KEY FAQ'S

Q1. Why are you speaking to us?

We are contacting all parents/carers of children who live within the catchment areas of Abernyte Primary School and Inchtute Primary School (north of the A90 only).

The recommendation of the options appraisal for Abernyte Primary School concluded that further assessment should take place to ascertain whether a change to the catchment area for Abernyte Primary School to incorporate the Inchtute Primary School catchment area north of the A90 would create a sustainable pupil roll for Abernyte Primary School.

Responses to the survey undertaken in 2017 were inconclusive.

Q2. If the further assessment concludes that the catchment area for Abernyte Primary School should be changed to include the area to the north of the A90 within the Inchtute Primary School will my child/children have to attend Abernyte Primary School?

Any primary school age pupil that currently attends a school within Perth and Kinross Council will be entitled to remain at the school they currently attend. They will not have to move to Abernyte Primary School if they do not wish to.

If a statutory consultation on the catchment review is approved any future pupils living in the catchment area would have to attend Abernyte Primary School. Younger siblings who wish to attend Inchtute after any catchment area change was to be implemented would have to make a placing request to attend Inchtute.

Their placing request would be given priority at a Cat 2 application because they have an older sibling already at the school.

It is anticipated that a start date for the change to the catchment area would be from August 2020 however this date is subject to change.

Q3. If my catchment area changes will my child/children be entitled to school transport?

Any child/children living outwith the statutory walking distance from their catchment school will be entitled to transport. The statutory walking distance for a primary school age child is 2 miles.

Children may also be entitled to transport on safety grounds.

Q4. If my child/children currently attend Inchtute Primary School and receive transport to the school and my catchment area changes to Abernyte Primary School. Will my child still receive transport if they continue to attend Inchtute Primary School?

Yes.

Transport would cease to serve Inchtute once the last pupils already attending Inchtute as catchment pupils finished their P7 year.

Younger siblings, as placing requests would not be entitled to free home to school transport. However, for the period that transport is operating for the children who were already attending Inchtute as catchment pupils, there may be opportunities for concessionary transport to be offered to younger siblings if there are any vacant seats on transport which is operating to serve Inchtute. It should be noted that this is not an entitlement.

Pupils who decide to continue to attend Inchtute Primary School and then decide to attend Abernyte Primary School at a later date would still be entitled to transport if they live outwith the statutory walking distance from the school.

If parents/carers of children attending Abernyte Primary School would like their children to access after school clubs at another school they would be responsible for making arrangements to transport their child/children to the after school club. Parents/carers would also be responsible for paying for this transport.

Q5. How long will it take for my child/children to be transported to Abernyte Primary School?

The child/children living to the north of the A90 in the existing Inchtute Primary School catchment area being picked up first would have an approximate travel time of 30 minutes from first pick up to arrival at Abernyte Primary School.

Q6. If the catchment area of Abernyte Primary School changes will any additional facilities be available at the school i.e Out of School Club, Nursery?

There are no plans to extend the number of after school clubs managed by Perth and Kinross Council. This provision is not a statutory requirement and requires to be cost neutral, therefore even the smallest provision must be accessed by at least 12 - 16 children consistently each night to cover staff and operating costs.

The Childcare Strategy Team provide support to community groups to explore models of childcare before or after school, these groups require to be led by members of the community who are able to make a significant and sustained contribution of time. In some schools in Perth and Kinross community groups have been supported to become voluntary management committees or supported individuals to deliver;

- before or after school childcare,
- supervised activities, e.g. Chess Club, Arts and Craft Club, Badminton Club (This is not classed as childcare, not required to register with the Care Inspectorate)

- “Safestart” – supervised drop off in the morning
- Promotion of Childminders to drop off or pick up from the school, particularly when there is only a small group e.g. less than 6 children.

If a community group linked to Abernyte PS was interested in setting up a breakfast/after school club they would have the option to access this support and advice, including assistance to consider if the business plan for a club would be financially sustainable.

The Abernyte Primary School Parent Council have stated they are keen to progress with an after school club but we are unable to provide any commitment to this on their behalf.

To find out more please contact the Childcare Strategy Team childcare@pkc.gov.uk

Q7. If the catchment area of Abernyte Primary School changes what is the expected pupil roll likely to be?

See separate table of projected pupil numbers.

Q8. Who will see the information I provide and how will it be used?

The information you provide will be used within the options appraisal. All information will be anonymised to ensure no individuals can be identified. A summary of the feedback received will be included within the options appraisal considered by Lifelong Learning Committee in August 2018.

ADDITIONAL FAQ'S

Q9. Why is a review of the school being undertaken?

The review is part of a wider programme of transformation across the Council. The purpose of this transformation review is to support the delivery of better outcomes for all of our young people through more effective use and management of the school estate.

The basis of the review is the **occupancy** of the school.

Q10. What is a sustainable school roll?

Lifelong Learning Committee approved the principle that schools should have an occupancy rate where possible greater than 60% of the capacity and ideally should be operating at over 80% capacity. A sustainable school roll would meet this principle.

Q11. What is an options appraisal?

An options appraisal looks in detail at a wide range of information related to the school. These are likely to include aspects of the local area/community, the school within the community, future pupil projections, population, planned house building, the condition and suitability of the school, improvements to the school buildings, travel arrangements, financial information, educational benefits and community impact.

Q12. Can I see the options appraisal for Abernyte Primary School?

A copy of the options appraisal is available on the Perth and Kinross Council website.

Q13. What areas were considered as part of the catchment review option for Abernyte Primary School?

A number of potential options on catchment changes for Abernyte Primary School were considered as part of the options appraisals. These areas were chosen because they share a boundary with the Abernyte Primary School catchment area and could be within a reasonable travelling distance.

The outcome of the catchment analysis within the options appraisals concluded that parts of the Inchtute Primary School and Longforgan Primary School catchments to the north of the A90 were identified as potentially suitable for inclusion in an enlarged Abernyte Primary School catchment as a result of geographical proximity and sufficiency of pupil numbers

14. Why is the area to the north of the A90 within the Inchtute Primary School catchment area the only area that is being considered for further assessment?

A survey was distributed to parents and carers of both under 5's and primary school aged children that live north of the A90 within the existing Inchtute Primary School catchment area and Longforgan Primary School catchment area.

As a result of the survey, changing the Abernyte Primary School catchment area to include the area north of the A90 within the existing Longforgan Primary School catchment has been discounted.

This is due to the response received from parents/carers surveyed within the Longforgan area, in that 6 parents out of 6 who responded to the question said that they would not send their children to Abernyte Primary School if the catchment changed.

The response received from parents/carers living within the existing Inchtute Primary School catchment area north of the A90 is more positive with 8 out of 13 parents saying that they would send their children to Abernyte Primary School.

Although the majority of parents/carers surveyed have indicated they would be in favour of sending their children to Abernyte Primary School if it was their catchment school the comments received indicate there may be additional considerations/caveats which need to be clarified.

Q15. What happens once the further assessment has been completed?

Following this assessment, an updated options appraisal report with a recommendation for Abernyte Primary School will be submitted to Perth and Kinross Council Lifelong Learning Committee.

Q16. If the options appraisal is approved, what happens next?

- If there is a recommendation to change the catchment of a school, close a school, or make changes to the stages of education e.g. a split site, then a **Statutory Consultation** must take place.

Q17. What is a Statutory Consultation and how long does this take in relation to a catchment review?

The Schools (Consultation) (Scotland) Act 2010 sets out the consultation process that local authorities must follow when proposing a permanent change to any of their schools – such as a closure, relocation or change of catchment area.

When proposing a major change to a school the local authority must:

1. Publish a proposal paper, including a statement of the educational benefits of what's proposed;
2. Set a consultation period of at least 6 weeks of term time;
3. Let parents and the Parent Council know about the consultation and invite responses;
4. Hold a public meeting;
5. Invite Education Scotland to prepare a report on the educational aspects of the proposal; and
6. Publish a consultation report which responds to issues raised through the consultation period.
7. Report on the outcome of the consultation considered by Lifelong Learning Committee.

The Statutory Consultation period lasts at least 6 weeks, but the whole process of making a change to the school, including the stages outlined above, can take around 1 year from when the process commences.

Q18. Who should I contact should I have any questions or queries in regards to the School Estate Transformation Programme?

- Questions/queries can be emailed to ecsresources@pkc.gov.uk.

Overview of responses received to questions at Parent/Carer meetings

(Some information has been redacted to ensure responses remain anonymous)

As a parent/carers what is most important to you when choosing which school your child/children attend?

Abernyte Primary School

1. Child should be happy at school. Support the local school. Easy access to provision. Quality Education. Happy environment. Single teacher school able to dedicate time to individual pupil learning. Small class size important. Rural location – able to play outside in rural location, open spaces helps social development. Rural schools promote and develop confident children.
2. Small number of children in school. Moved to Abernyte to attend school.
3. No discussion – should support/attend local school. Aware at time of good education provided at Abernyte.
4. A good environment. A happy friendly, nurturing environment. Somewhere they will thrive.

Inchtore Primary School

1. Social interaction. Mix of gender in classes. Ease of transition when children attend secondary school
2. Catchment school. Geographical – work in Dundee. Good feedback/info for the school. Social groups from nursery.
3. Reputation, geographical location, social development.
4. Atmosphere within school. Social development. Delivery of curriculum.
5. Like the fact that it is a large school and there are social aspects. Abernyte is too small. Lots of activities offered through school. Composite classes not ideal.
6. Balanced social environment important for development.
7. School at Abernyte too small. No boys. Socialise in a larger school. After school club. Transport to catchment school. Extra curricular – football etc.
8. Social development. Number of girls on roll – no boys (Abernyte) at time of enrolment. No nursery (Abernyte) at school. Group of friends at Inchtore and do not want to take away from that group.

Are there any other considerations that would affect your decision to send/enrol your child at Abernyte?

Comments from parents/carers living in Abernyte Primary School catchment area;

1. Demographics of school roll. Good mix of boys and girls.
2. Childcare – use breakfast club and out of school club at Inchtore.

3. Inchtire Primary School would utilise Abernyte Primary School as an annexe to the school. For example all attend Inchtire with some year groups taught at Abernyte.

Comments from parents/carers living in Inchtire Primary School catchment area;

1. Going to secondary school from a small primary school will be difficult.
2. School (Abernyte) would need to be nearer the 80% capacity for XXXX to be considered for Abernyte.
3. If roll continues to increase at Inchtire and there are issues and the school roll has increased at Abernyte then we may choose to change.

Do you have any other comments in relation to your response?

Comments from parents/carers living in Abernyte Primary School catchment area;

1. Supportive of catchment review. Like to support local school. Class sizes at Inchtire are a concern. I feel decisive action needs to be taken by the Council regarding Abernyte Primary School. Either change the catchment or close the school. Leaving the situation as it is currently is not acceptable.
2. Statutory consultation needs to conclude for August 2019 in order to accelerate the sustainability of the school. The catchment review is supported by Inchtire Community Council and Abernyte Community Company.
3. Inchtire is too full and catchment review would assist with this. Social development for XXXX at the school (Abernyte) is very good. Single class at Abernyte allows children to mix with all age groups. In terms of catchment review would like to find ways where all parents/carers achieve best outcomes for their children. Would like the parents/carers of any children in Inchtire who have younger siblings not currently at school the option of attending either Inchtire or Abernyte so they are not inconvenienced as part of the catchment review. Would like people to be aware of all the positive things Abernyte offer children and the education provided. I have provided information as to why Abernyte catchment should be extended and why this will help schools nearby (Appendix 8).
4. It was a consideration when deciding what school XXXX was to attend that since Abernyte roll was so low it may close and XXXX would need to move school during his primary education.
5. Would like to hope that all parents/carers spoken to in regards to the catchment review see this as a positive move. Would have liked to see a catchment review take place 10 years ago. I feel that potentially waiting a further 2 years to implement a catchment review is not helpful but would ultimately be positive for the school if implemented.
6. I feel the funding used at Abernyte could be distributed around other schools in the estate if it were closed. Would like to see Abernyte used as space for Inchtire nursery if school closes.

7. Catchment review would be good. Small communities nearby would benefit. If the school was to close building would be good as a community asset – don't want school to close. Appreciate that the Council are asking people.

Comments from parents/carers living in Inchtute Primary School catchment area;

1. Would not like small class size at Abernyte. Do not think small classes (composite) assists with development. I think the funding that goes towards small rural schools would be better distributed amongst other schools.
2. Would not want children to attend a school where there is a possibility all children are in one class
3. XXXX is a XXXX child who could be deferred until XXXX XXXX – potential the XXXX could be at different school - this could potentially make XXXX go to school earlier than planned to ensure a place at Inchtute. Capacity at Abernyte is not “big enough” – social mix of little school v big schools. Single teacher/2 teacher school – relationships with pupils and also parents. Topics, school trips how does it work for all primaries. X children in 2 schools – difficult to manage, logistics, timings.
4. Would rather sell house and move than attend Abernyte. Don't use after school club but might in future.

Appendix 8

Why extend Abernyte catchment area;

- To offer more children the great opportunity to come to an amazing rural school
- To grow the Abernyte School roll and make it sustainable for years to come
- To keep the heart of Abernyte in this lovely community
- To correct what is long overdue
- To do something which makes 100% sense and has no good reasons against it

Because Abernyte School stands for;

- happy, interested children
- small, stimulating class size
- individual and fun learning
- taught directly by an excellent and enthusiastic head teacher
- confident pupils, who take responsibility and ownership
- high achievements
- stunning rural location and outdoors, orchard
- beautiful and good, well kept up building
- most up to date educational materials
- because population in Perthshire is growing
- because nearby schools are close to capacity and still more housing is being planned

Increasing Abernyte's catchment area will help other schools nearby;

- with class size and the many above mentioned points
- relieve pressure in close to capacity schools
- offers parents/children an additional choice for more individual learning (even when outside the new catchment area)
- could slow or prevent further building, extensions of close to capacity schools in the area
- potentially save inconvenience, noise, distraction for children
- potentially save costs
- can keep serving as overflow for close to capacity schools

We feel extremely happy that our children had the privilege to be taught at Abernyte School. I wish very much that lots more children will get this great opportunity.