

THIS IS A CONSULTATIVE DOCUMENT



PERTH AND KINROSS COUNCIL

EDUCATION AND CHILDREN'S SERVICES

PROPOSAL PAPER

The following schools are affected by this proposal document:

- **Abernyte Primary School**
- **Inchtute Primary School**

This document has been issued by Perth and Kinross Council for proposal in terms of The Schools (Consultation) (Scotland) Act 2010.

Any Ordnance Survey map data included within this document is provided by Perth and Kinross Council under licence from Ordnance Survey in order to fulfil its public function in relation to this public proposal. Persons viewing this mapping should contact Ordnance Survey Copyright for advice where they wish to licence Ordnance Survey mapping data for their own use.

DISTRIBUTION

A copy of this document is available on the Perth and Kinross Council website: www.pkc.gov.uk

A link to an electronic version of this document will be provided by letter to:

- The Parent Council (if any) of the affected schools
- The parents of the pupils and children at the affected schools
- The parents of children expected to attend an affected school within 2 years of the date of publication of this proposal document
- The teaching and ancillary staff at the affected schools
- The trade union representatives of the above staff
- The Community Councils
- Relevant users of the affected schools
- Elected Members of Perth and Kinross Council
- The Constituency MSP and List MSPs covering the Constituency
- The Constituency MP
- The Executive Director, Housing & Environment, Perth and Kinross Council
- Tayside Contracts
- LiveActive Leisure
- Education Scotland

A copy of this document is also available from:

- Education and Children's Services, 2 High Street, Perth, PH1 5PH
- Abernyte Primary School, Abernyte, PH14 9ST
- Inchtute Primary School, Inchtute, PH14 9RN

This document is available in alternative formats or in translated form for readers whose first language is not English. Please apply to Education and Children's Services, 2 High Street, Perth, PH1 5PH by telephone on 01738 476200; or by e-mail: ECSGeneralEnquiries@pkc.gov.uk

CONSULTATION WITH CHILDREN AND YOUNG PEOPLE

Pupils will be consulted about the proposal in school and further information about this will be provided to parents/carers.

SUMMARY OF PROCESS FOR THIS PROPOSAL DOCUMENT

1. Consideration by the Lifelong Learning Committee

This proposal document has been issued as a result of a decision on 22 August 2018 of the Lifelong Learning Committee of Perth and Kinross Council ([Report No 18/243 refers](#)). This is to seek views on the proposals in this paper.

2. Proposal document issued to consultees and published on Council website

A link to a copy of this document will be issued free of charge to the consultees listed on the preceding page, and it will also be published on the Council website: www.pkc.gov.uk

3. Publication of advertisement in local newspapers

An advertisement will be placed in the relevant local newspapers.

4. Length of consultation period

An advertisement will be placed in local newspapers on Monday 29 October 2018. The consultation will run from Monday 29 October 2018 until close of business on Friday 14 December 2018, which includes a period of 33 school days.

5. Public meeting

Two public meetings will be held, the details of which are given on Page 6 of this document.

6. Involvement of Education Scotland

When the proposal document is published, a copy will also be sent to Education Scotland by the Education Authority. Education Scotland will also receive a copy of any relevant written representations received by the Authority from any person during the consultation period or, if Education Scotland agree, a summary of them. Education Scotland will further receive a summary of any oral representations made to the Authority at the public meeting which will be held and, as available (and so far as otherwise practicable), a copy of any other relevant documentation.

Education Scotland will then prepare a report on the educational aspects of the proposal not later than 3 weeks after the Authority has sent them all representations and documents mentioned above. For the avoidance of doubt, the 3 week period will not start until after the consultation period has ended. In preparing their report, Education Scotland may enter the affected schools and make such reasonable enquiries of such people there as they consider appropriate and may make such reasonable enquiries of such other people as they consider appropriate.

7. Preparation of consultation report

The Education Authority will review the proposal having regard to the Education Scotland Report, written representations that it has received and oral representations made to it by any person at the public meeting. It will then prepare a consultation report. This report will be published in electronic and printed formats and will be published on the Council website. It will be available on the Council website and from Education & Children's Services at 2 High Street, Perth free of charge. Anyone who made written representations to the Authority during the consultation period will also be informed about the report.

The report will include:

- a record of the total number of written representations made to the Authority during the consultation period;
- a summary of the written representations;
- a summary of the oral representations made at the public meeting;
- the Authority's response to the Education Scotland Report as well as any written or oral representations it has received, together with a copy of the Education Scotland Report and any other relevant information, including details of any alleged inaccuracies and how these have been handled; and
- a statement explaining how the Authority complied with the requirement to review the proposal in light of the Education Scotland Report and representations (both written and oral) that it received.

The consultation report will be published and available for further consideration for a period of 3 weeks.

8. Decision

This report, together with any other relevant documentation, will be considered by the Lifelong Learning Committee of Perth and Kinross Council, who will come to a decision about whether to implement the proposal.

9. Note on Corrections

If any inaccuracy or omission is discovered in this proposal document, either by the Council or any person, the Council must investigate and decide what, if any, action is required.

If relevant information has been omitted or there has been an inaccuracy, the Council will then take appropriate action, which may include the issue of a correction notice, the publishing of a corrected Proposal Paper or the revision of the timescale for the consultation period, if appropriate. In that event, relevant consultees and Education Scotland will be advised. The Authority must inform the person who made the allegation and what action it has taken.

10. Scottish Ministers Call-in

When the Education Authority has made a final decision whether to implement the proposal, it will require to notify the Scottish Ministers of that decision, and provide them with a copy of the proposal document and consultation report. This must be done within 6 working days of that decision.

The Education Authority must also publish on its website the fact that it has notified Scottish Ministers of its decision and of the period during which consultees have the opportunity to make representations to Ministers. For rural school closures, the Education Authority must also give notice of the reasons why the Council is satisfied that closure is the most appropriate response to the reasons for bringing forward the proposal. The Scottish Ministers have an 8 week period from the date of that final decision to decide if they will call-in the proposal. Within the first 3 weeks of that 8 week period, the Scottish Ministers will take account of any relevant representations made to them by any person. Until the outcome of the 8 week call-in process is known, the Authority cannot proceed to implement the proposal.

If Scottish Ministers decide to call in a closure proposal, they must refer it to the Convener of the School Closure Review Panels for determination by a School Closure Review Panel. The Authority may not implement the proposal (wholly or partly) unless the Panel has granted consent to it (with or without conditions) and either the period for making an appeal to the sheriff has expired or, if an appeal has been made, it has either been abandoned or the sheriff has confirmed the Panel's decision.

The School Closure Review Panel may refuse to consent to the proposal, refuse consent and remit the proposal back to the Authority or grant their consent to the proposal subject to conditions or unconditionally.

- Ministers have a power to call in a closure decision, but only where it appears to Ministers that the Council has failed in a significant regard to comply with the Schools (Consultation) (Scotland) Act's requirements or, in coming to its decision, has failed to take proper account of a material consideration relevant to the proposal. Ministers have up to 8 weeks from the date of the Council's decision to decide whether or not to issue a call-in notice.
- During the first 3 weeks of this period, anyone is able to make representations to Ministers on whether the decision should be called-in.
- During the call-in period, the Council may not proceed further, in whole or part, with the proposed closure. Ministers may come to a decision sooner than 8 weeks (but not before the 3 weeks for representations to be made to them has elapsed).
- The Schools (Consultation) (Scotland) Act, as amended, gives Ministers and School Closure Review Panels the right to call on advice from Education Scotland in relation to a proposal at the call-in or determination stage.

11. Note

This consultation is being conducted having regard to the terms of the Schools (Consultation) (Scotland) Act 2010.

PUBLIC MEETINGS

Two public meetings will be held to discuss the proposal. Anyone wishing to attend either of the public meetings is invited to do so. The meetings, which will be convened by the Education Authority, will be addressed by the Executive Director (Education and Children's Services), or other senior officers of the Council.

The meetings will be an opportunity for interested parties to:

- Hear more about the proposal
- Ask questions about the proposal
- Have their views recorded so that they can be taken into account as part of the consultation process.

The meetings will be held on:

Date – Monday 12 November 2018

Time – 7.00 pm

Venue – Abernyte Primary School, Abernyte

Date – Wednesday 14 November 2018

Time – 7.00 pm

Venue – Inchturie Primary School, Inchturie

A note will be taken at the meetings of questions and views. This note will be published on the Council website, and a printed copy will be made available upon request.

**PERTH AND KINROSS COUNCIL
EDUCATION AND CHILDREN'S SERVICES**

THIS IS A PROPOSAL DOCUMENT

Proposal :

That, subject to the outcome of this proposal:

- Provision of a school at Abernyte Primary School be permanently discontinued with effect from 1 July 2020, or as soon as possible thereafter;
- That the pupils of Abernyte Primary School catchment area permanently receive their education at Inchturre Primary School, from 2 July 2020 or as soon as possible thereafter; and
- That the delineated catchment area of Inchturre Primary School be permanently extended to subsume the whole delineated catchment area of Abernyte Primary School from 2 July 2020.

This Proposal Paper should be read in conjunction with the [Options Appraisal](#) as it contains more detail regarding the options considered and rejected along with community feedback received.

1. REASONS FOR FORMULATING THE PROPOSAL

- 1.1 Abernyte Primary School is a single teacher primary school serving the village of Abernyte and the surrounding area and is a feeder primary school for Perth High School.
- 1.2 The capacity of Abernyte Primary School is 44 pupils. The Abernyte Primary School roll at Census 2010 was 21 pupils and at Census 2017 was 5 pupils giving an occupancy of 11.3%. At October 2018, the school roll was 6 pupils.

There were 11 pupils living within the catchment area for Abernyte Primary School at the time of the options appraisal being undertaken. However, 6 of these pupils attended other schools in Perth and Kinross as a result of successful placing requests made by their parents.

- 1.3 Data on pre-school children registered with GP practices living in the Abernyte Primary School catchment shows that although potential P1 intake numbers have remained relatively low over the last few years, they are much higher than the number of pupils who are attending the school.
- 1.4 Future pupil projections have been considered using aggregated GP registration data and Abernyte Primary School pupil numbers are projected to remain static over the next 4 years. There are low numbers of pre-school children living within the catchment area projected to attend Abernyte Primary School over the next 4 years.

Pupil projections in the catchment area do not indicate that the potential pupil numbers will increase in the future and there is no suggestion going forward that this is likely to change.

- 1.5 These circumstances result in a diminished and unsustainable school pupil population for Abernyte Primary School. There is no foreseeable prospect of an increased, stable pupil population. The provision of primary education within Abernyte needs to be considered in the context of the needs of the pupils and the local community, both now and in the future.
- 1.6 As part of an [options appraisal](#), information was collated on pupil numbers, housebuilding, the school, travel arrangements, environmental impact, the local area and community and finances to inform the options. A pre-consultation exercise was also carried out with the local community to inform the options appraisal.
- 1.7 A full assessment has been undertaken in respect of a proposal to extend the catchment area for Abernyte Primary School to establish if this would create an increased pupil roll for Abernyte Primary School. The conclusion of the assessment is that there would continue to be insufficient pupil numbers to increase the school roll at Abernyte Primary School or make it sustainable in future years if the catchment was extended

2. VISION, BACKGROUND AND STATUTORY RESPONSIBILITIES

- 2.1 Perth and Kinross Council works to enhance quality of life, make best use of public resources and ensure continuously improving services. Perth and Kinross Council's corporate strategy "Securing the Future" aims to ensure that individuals, families and communities experience the best possible outcomes from a range of services.

Perth and Kinross Council has a strong identity and clear priorities which everyone works together to achieve, creating areas which are vibrant and successful; safe, secure, healthy and sustainable environments; educated, responsible and informed citizens; confident and active communities; and places where people are nurtured and supported.

- 2.2 The Council's Transformation Strategy 2015-2020 'Building Ambition' and Organisational Development Framework were approved by Council on 1 July 2015 ([Report No. 15/292 refers](#)). They detail how Perth and Kinross Council will deliver transformation over the next five years. Accompanying the strategy is a programme of major reviews which are considered to be key drivers and enablers of transformation across the organisation.

On 24 August 2016, Lifelong Learning Committee ([Report No. 16/347 refers](#)) approved principles to be used as a basis for the transformation review, 'Securing the Future of the School Estate'.

- 2.3 This approach reflects the Single Outcome Agreement National Outcome 15 that "Our public services are high quality, continually improving, efficient and responsive to local people's needs", and the Local Outcome that "Our services will be responsive, of high quality and continually improving".

This report also links with the School Estate Management Plan, Education and Children's Services Policy Framework Maximising Resources and with the Education and Children's Services objective to develop the range and quality learning experiences for all.

- 2.4 On 2 November 2016, the Council approved the report "Securing the Future of the School Estate – Next Steps" ([Report 16/485 refers](#)). This report detailed the outcome of the high level review and proposed to proceed with further work on the schools which did not meet the suitability, condition or occupancy principles. In this report, it approved the development of an options appraisal in relation to the future of Abernyte Primary School due to under-occupancy.
- 2.5 On 21 March 2018, Lifelong Learning Committee ([Report 18/86 refers](#)) approved further assessment of the option to increase the catchment area for Abernyte Primary School to include the area of Inchtute Primary School catchment which lies to the north of the A90. This took account of feedback from the Abernyte community and the outcome of the online survey of the parents/carers in the Inchtute Primary School catchment to the north of the A90. This assessment would seek to clarify whether a proposal to change the catchment area would provide an increased and sustainable school roll for Abernyte Primary School.
- 2.6 On 22 August 2018, Lifelong Learning Committee considered the [options appraisal](#) and agreed to commence formal consultation on a proposal to close Abernyte Primary School ([Report No 18/243 refers](#)) in accordance with the Schools (Consultation) (Scotland) Act 2010.
- 2.7 The 2010 Act's principal purpose is to provide strong, accountable statutory consultation practices and procedures that local authorities must apply to their handling of all proposals for school closures and other major changes to schools. These consultation processes are expected to be robust, open, transparent and fair, and seen to be so. They are also expected to be consistent across Scotland.
- 2.8 The 2010 Act makes special arrangements in relation to rural schools, and establishes a presumption against the closure of rural schools. The result of this is that education authorities must have special regard to a number of factors before formalising a proposal to close a rural school and in consulting on and reaching a decision as to whether to implement a rural school closure proposal.
- 2.9 These duties are outlined in the [Schools \(Consultation\) \(Scotland\) Act 2010 and the accompanying Statutory Guidance](#).
- 2.10 Councils have a statutory duty in terms of the Education (Scotland) Act 1980 to make adequate and efficient provision of school education across their entire area for the current school population and future pattern of demand.

Education and Children's Services Service Asset Management Plan 2016 (incorporating School Estate Management Plan), approved by the Lifelong Learning Committee on 9 March 2016 ([Report No. 16/108 refers](#)), provides information on the whole of the school estate and the overall objectives and future priorities within Perth and Kinross Council.

- 2.11 Councils also have a statutory responsibility in terms of the Local Government in Scotland Act 2003 to achieve best value. In doing so, consideration must be given to occupancy as buildings are expensive resources. To achieve best value and optimum efficiency, the minimum number of buildings is required to deliver Council services to a particular locality. The organisation of the school estate is therefore kept under regular review, including the need for school provision and other matters, such as catchment areas and the implementation of shared headships.
- 2.12 The Education (Scotland) Act 2016 amends the Standards in Scotland's Schools Act 2000 by adding in new duties to address inequality of outcome. These duties apply in different ways to both Scottish Ministers and education authorities. Where the education authority is making or implementing strategic decisions about school education, it is required to have due regard to the need to carry out its functions in a way which is designed to reduce inequalities of outcome. This is particularly directed in the Act towards pupils who experience those inequalities through socio-economic disadvantage, but there is also a power to extend the range of pupils who are covered by this duty.

3. ABERNYTE AND THE LOCAL AREA

- 3.1 The village of Abernyte is situated in the Carse of Gowrie, approximately 12 miles from Perth and approximately 12 miles from Dundee. The Carse of Gowrie stretches for approximately 20 miles (32 km) along the north shore of the Firth of Tay between Perth and Dundee.
- 3.2 Abernyte has a church, which is located approximately a mile from Abernyte Primary School. The church is linked with 3 other Carse of Gowrie churches; Kinnaird, Inchturre and Longforgan. Abernyte Church is available for use by the community.
- 3.3 Attractions in the area include the Scottish Antique & Arts Centre, a micro-brewery and local walks. Visitors to the area can be accommodated at Milton Farm Lodges as well as various holiday cottages in the area.
- 3.4 The Abernyte Community Interest Company (ACIC) was formed in 2006 to represent the community of Abernyte. They amalgamated in 2015 with the local Heritage Group. The ACIC organise and host events in and around Abernyte, for example: afternoon events at the Millennium Walk and the Abernyte Harvest Festival. Other events that occur in the area are the annual Parish Walk and the French exchange (through the Inchturre Area Twinning Association). The Abernyte community set up an 'Abernyte Heating Oil Collective' (AHOC) in 2010. Since it was set-up the group has over 40 members ordering over 100,000 litres of their heating oil per year. The ACIC owns the large playing field that lies next to the school. This playing field is used for various activities by the community and the school.
- 3.5 Abernyte Primary School is approximately 3.4 miles¹ from Inchturre Primary School and approximately 4.4 miles from Longforgan Primary School.

¹ Google Maps

- 3.6 Data on pre-school children registered with GP practices living in Abernyte catchment shows that the number of children eligible to start school over the 4 year period (2018 - 2021) is 5. The data also indicates that the number of primary school pupils living in the area has decreased in recent years but also that a number of pupils are attending alternative primary schools.
- 3.7 The methodology applied for projecting future P1 intakes uses aggregated GP registration data. The anonymised data, sourced from the NHS reflects children registered with a GP, within specific school catchments areas. P1 pupils included within the data received from the NHS do not always decide to attend their catchment school. This is primarily because parents make placing requests to other schools or elect to send their child to a denominational school.
- As a result of these movements, the P1 data is adjusted taking into consideration the movement of pupils in previous years. The adjusted data is the primary source of information for forward planning. It should be noted that due to the fluid nature of pupil movements within the school estate, for a number of different reasons, predicting future years' schools rolls will not be exact. It is however accurate enough to provide valuable information on forward planning for the school estate.
- 3.8 The TAYplan sets out a hierarchical approach to directing new development to existing settlements and identifies Perth Core Area as the tier 1 settlement which should take the majority of new development.
- 3.9 There is no planned house building for the Abernyte area contained within the LDP or Housing Land Audit (HLA) 2017.
- 3.10 The Proposed Local Development Plan (LDP2) was approved for consultation by Council on 22 November 2017 ([Report No. 17/387](#) refers). The aspiration is to have a final LDP to adopt by Spring 2019. There are no changes proposed for Abernyte in LDP2.
- 3.11 It is projected that house building in the Abernyte Primary School catchment area will continue to be limited with few, if any, additional pupils for the school.
- 3.12 Information received from Perth and Kinross Council Business Growth Team indicated the following in relation to business activities in the Abernyte area:
- The biggest local employer in Abernyte is the Scottish Antique & Arts Centre.
 - The Taypack processing and manufacturing plant (47 employees) is based in nearby Inchtute.
 - Abernyte micro-brewery started up around 2015 and it is of small scale.

There is no indication at this point of any significant changes to population as a result of business growth.

4. ABERNYTE PRIMARY SCHOOL

- 4.1 Abernyte Primary School provides non-denominational education to pupils from P1 - P7 from the village of Abernyte and surrounding area. There is no nursery provision at Abernyte Primary School. A plan of the school site for Abernyte Primary School is attached as Appendix 3.

- 4.2 The school is on one level and is made up of 2 classrooms, a hall for dining and PE, toilets, resources room, school office/staff room and the kitchen. The classroom at the main entrance of the school can accommodate 20 pupils and the classroom at the rear of the school can accommodate 24 pupils.
- 4.3 The catchment area for Abernyte Primary School adjoins the catchment areas for Inchtute, Longforgan, Balbeggie, Collace, Kettins and Burrelton Primary Schools. It also shares a boundary with Angus Council area. Appendix 1 shows the present school catchment area for Abernyte Primary School.
- 4.4 The Scottish Government's Rural School List 2017 classifies Abernyte Primary School as an "accessible rural" school under Section 14 of the Schools (Consultation) (Scotland) Act 2010. The classification is based on two main criteria, settlement size and accessibility based on drive time. For Abernyte Primary School the classification criteria is "areas with a population of less than 3,000 people and within a 30 minute drive time of a settlement of 10,000 or more" (Source: Scottish Government Rural School List 2017).
- 4.5 The school structure has one composite class across stages Primary 1 – 7.
- 4.6 Historical and projected pupil roll data for Abernyte Primary School is attached as Appendix 5. This data shows that the roll of Abernyte Primary School has been falling over the last 7 years, with pupil numbers unlikely to increase above their present level.
- 4.7 There are 6 children in the catchment area who attend other primary schools rather than Abernyte Primary by way of placing request.
- 4.8 The school roll has been decreasing since 2011. In 2011, there were no P1 pupils enrolled at Abernyte Primary School and, in the last 3 years, there have been no P1 pupils enrolled at the school. This would leave the school roll at between 3 and 6 pupils for the period 2018 - 2022, assuming all future new P1 pupils living in Abernyte catchment area attended Abernyte Primary School.
- 4.9 Throughout Scotland, core facts are gathered and published on school buildings. The definition and assessment categorisations are set by the Scottish Government as follows:

Condition ⁽¹⁾ -is an assessment of the physical condition of the school and its grounds. Categorisation is as follows:

- A: Good – Performing well and operating efficiently
- B: Satisfactory – Performing adequately but showing minor deterioration
- C: Poor – Showing major defect and/or not operating adequately
- D: Bad – Life expired and/or serious risk of imminent failure

Suitability ⁽²⁾ -is an assessment of the school as a whole, its buildings and its grounds and of the impact these have on learning and teaching, leisure and social activities and the health and well-being of all users. Categorisation is as follows:

- A: Good – Performing well and operating efficiently
- B: Satisfactory – Performing well but with minor problems
- C: Poor – Showing major problems and/or not operating optimally

D: Bad – Does not support the delivery of services to children and communities

Sufficiency ⁽¹⁾-states the occupancy – pupil roll divided by capacity expressed as a percentage.

Source: (1) *Core Facts Building Our Future: Scotland's School Estate 2003*
(2) *The Suitability Core Fact: Scotland's School Estate 2008*

- 4.10 A condition survey was carried out on Abernyte Primary School building in January 2017 and the overall site is rated as condition 'B' (Satisfactory – performing adequately but showing minor deterioration). Condition is an assessment of the physical condition of the school and its grounds.
- 4.11 The overall suitability of Abernyte Primary School building is categorised as 'A' (Satisfactory - performing well and operating efficiently). Suitability is an assessment of the school as a whole, its buildings and its grounds and the impact these have on learning and teaching, leisure and social activities and the health and wellbeing of all users.
- 4.12 Planned and unplanned maintenance on the school building in the last 3 financial years cost £14,144.
- The approximate cost to upgrade the property is £333,090 for building fabric, mechanical and electrical works which include ventilation, fire alarm systems, heating and hot water pipework, insulation and building fabric improvements. These works are not required immediately but in the medium term which is 2-5 years.
- 4.13 The school site and the school building are owned by Perth and Kinross Council. There are no title restrictions which would prohibit the Council from selling the site.
- 4.14 The School invites local people into the school throughout the year for various events. The Wine Club and Heritage Group use the school out with school hours. The Wine Club meets monthly and the Heritage Group meets a number of times a year.

5. OPTIONS FOR CONSIDERATION

- 5.1 In arriving at the proposal set out within this Proposal Paper, the Council has considered a number of alternative options for the future of Abernyte Primary School as part of the options appraisal:
- Option 1 – School remains open with existing catchment area.
 - Option 2 - Consider mothballing the school and move pupils to Inchtute Primary School.
 - Option 3 - Catchment area is reviewed to determine whether this would increase the school roll sufficiently to ensure the future sustainability of the school.

- Option 4 - Consider closing the school and move pupils to a neighbouring catchment school.

5.2 In considering the options, account was taken of the fact that there is a presumption against closure of a rural school. As part of the options appraisal, the “rural school factors” specified in the School Consultation (Scotland) Act 2010 have been given special regard.

These are:

- Effect on Community
- Effect on Travel Arrangements
- Educational Benefit

6. ASSESSMENT OF OPTIONS

The detail of the assessment of each option is included within the [Options Appraisal](#).

6.1 Abernyte Primary School remains open with existing catchment area

6.1.1 The pupil roll projections reflect that there is no evidence to suggest that the roll will significantly increase in future years. Low future pupil numbers are unlikely to lead to a sufficient increase to make the school roll sustainable.

6.1.2 There is no planned house building in the Abernyte Primary School catchment area.

6.1.3 The financial implications of retaining the ‘status quo’ for the school are a continuation of the current running costs of approximately £120,786 per annum. There is a capital cost of approximately £333,090 required to upgrade the building in future years.

6.1.4 This option will not affect the community, travel arrangements or current pupils.

6.1.5 The reason for taking forward an options appraisal for Abernyte Primary School was that pupil numbers had been consistently low over recent years and there was concern over the sustainability of the school. The pupil roll projections reflect that there is no evidence to suggest that the roll will significantly increase in future years. The key issue is that out of 11 children at Census 2017 who could attend the school, 6 of them attend neighbouring schools. In addition, low future pupil numbers are unlikely to lead to a sufficient increase to make the school roll sustainable.

6.1.6 It has not been possible to identify other steps which could increase the roll, whilst maintaining the status quo in terms of catchment area. This is therefore not considered a reasonable alternative.

6.2 Consider mothballing Abernyte Primary School and move pupils to Inchtute Primary School

6.2.1 If Abernyte Primary School was mothballed, pupils would be accommodated at Inchtute Primary School which is approximately 3.4 miles away and is the nearest school in Perth and Kinross. Pupils would have to travel between approximately 3.3 miles and approximately 5.8 miles to attend Inchtute Primary School.

The maximum time spent travelling on the bus would be 20 minutes for the child who has to travel furthest. In some other more rural areas within Perth and Kinross, pupils are travelling greater distances on more minor roads to reach their school. Pupils would be entitled to free home to school transport if they live more than 2 miles away from the school they are designated to attend.

- 6.2.2 The revenue savings generated from mothballing Abernyte Primary School amount to approximately £108,213 annually. This is made up of staff and building costs however this takes account of additional transport costs of £3,116 for current pupils to attend Inchtute Primary School.
- 6.2.3 There would be reduced energy consumption if the school is to be mothballed. Children would travel further to school in Inchtute, however most would be provided with transport, including those who already attend Inchtute Primary School as the result of a successful placing request currently.
- 6.2.4 The roll at Abernyte Primary School is unlikely to exceed 6 pupils in the next 4 years. There is evidence that pupils from the catchment area currently choose to attend other schools in the area instead of Abernyte Primary School and this will be for a range of reasons. In addition, there is no planned house building in the Abernyte Primary School catchment area over the next 4 years.
- 6.2.5 It is also possible that if the school is mothballed, pending an increase in pupil numbers, children will become settled at Inchtute Primary School and would not return to Abernyte Primary School in the event of the school re-opening at a future date.
- 6.2.6 It could be considered that mothballing creates continued uncertainty for parents and the community. In addition, there are no opportunities to progress alternative uses for the building, which may include community asset transfer, lease or sale of the building, all of which may benefit the wider community. Therefore, on balance, it is considered that mothballing is more likely to be a negative than a positive, in terms of community impact.
- 6.2.7 If Abernyte Primary School was mothballed on an indefinite basis, Perth and Kinross Council would incur annual costs to maintain the building. Unoccupied buildings can deteriorate more rapidly than operational premises and can become a focus for opportunistic crimes and/or targets for vandalism whether the premises are located in urban or rural areas.
- 6.2.8 For the reasons above, mothballing the school in anticipation of increased pupil numbers where there is no house building planned is, therefore, not considered a reasonable alternative.

6.3 Catchment area is reviewed to determine whether this would increase the school roll sufficiently at Abernyte Primary School to ensure the future sustainability of the school

- 6.3.1 A catchment review can, in principle, be a reasonable option in some cases to increase the sustainability of a school. An in-depth analysis in each case is required to ascertain if a sustainable increase in school roll could be achieved and a detrimental impact on neighbouring schools is not created as a result.

6.3.2 Approval was given by Lifelong Learning Committee on 21 March 2018 ([Report No. 18/86 refers](#)) to carry out further assessment of the proposed option to increase the catchment area of Abernyte Primary School. This would include the area to the north of the A90 which is currently in the Inchturre Primary School catchment area. The purpose of the assessment was to seek clarity as to whether an increased and sustainable school roll could be achieved for Abernyte Primary School through extending the catchment area.

6.3.3 In May 2018 there were 21 primary school age children, known to Education and Children's Services, living to the north of the A90 in the Inchturre Primary School catchment area. Information obtained from the NHS in March 2018 indicated that there were 10 children under the age of 5 living in this area. There are 17 children known to Education and Children's Services (11 primary and 6 under 5's) living within the Abernyte Primary School catchment area. Five of the 11 primary school age catchment children attend Abernyte Primary School.

These figures above (i.e. 16 under 5 year olds) indicate that there would potentially be sufficient pupils with an extended catchment area to increase the roll of Abernyte Primary School to 13 pupils by 2021/22. This assumes that all under 5's from the extended catchment including the under 5's from the current Abernyte Primary School catchment area, attend Abernyte Primary School from 2019/20 when they reach school age.

6.3.4 In order to develop a more accurate understanding of the potential for a catchment change leading to an increased roll at Abernyte, all families (parents/carers living with primary or children under 5) known to the Council living in the potential new catchment area were invited to attend individual meetings to discuss the potential catchment change. This included those families living in the current catchment for Abernyte and those included in the identified area north of the A90. Families living in the Abernyte Primary School catchment area were included in the meetings to ascertain whether they would consider moving their school age children back to the school or placing their under 5's at the school in the future if the catchment was extended.

6.3.5 Based on the evidence gathered and detailed in the options appraisal, it is unlikely that an extended catchment area would increase pupil numbers at Abernyte Primary School or create a sustainable school roll for future years.

6.3.6 There would be minimal additional transport costs incurred for transporting children living within the existing Abernyte Primary School catchment area as existing arrangements could accommodate future pupils. There would be an approximate additional cost of £17,977 per annum to transport the pupils who live in the area to the north of the A90 within the existing Inchturre Primary School catchment area to Abernyte Primary School if they were to attend the school.

6.3.7 The approximate maximum travel time for these pupils from first pick up to arriving at school would be 30 minutes. The longest travel time for a pupil in this area currently travelling to Inchturre Primary School is 44 minutes. There may be an additional environmental impact with this option as it is likely additional vehicles will be required to transport pupils.

6.3.8 There would be a continued revenue costs of approximately £120,786 to run the school as a single teacher school. In addition £17,977 would be required for the additional transport costs. A capital cost of £333,090 will be required to upgrade the building.

6.3.9 There is no evidence that increasing the catchment area into the area north of the A90 would significantly increase pupil numbers and create a sustainable pupil roll for Abernyte Primary School. This is due to children from the Abernyte Primary School catchment area already choosing not to attend their catchment school and parents living within the proposed extended area indicating that they would not send their children to Abernyte Primary School if the catchment area was changed. It is, therefore, not considered reasonable to proceed with a change to the catchment area as an alternative.

6.4 Consider closing Abernyte Primary School and move pupils to a neighbouring catchment school

6.4.1 If Abernyte Primary School was closed, pupils would be accommodated at Inchtute Primary School which is approximately 3.4 miles away and is the nearest school in Perth and Kinross. Children would have to travel between approximately 3.3 miles and approximately 5.8 miles to attend Inchtute Primary School. The maximum time spent travelling on the bus would be 20 minutes for the child who has to travel furthest. In some other more rural areas within Perth and Kinross, pupils are travelling greater distances on more minor roads to reach their school. Pupils would be entitled to free home to school transport if they live more than 2 miles away from their designated school.

6.4.2 Inchtute Primary School currently accommodates a number of pupils from Abernyte Primary as a result of placing requests. Inchtute Primary has capacity to continue to accommodate the projected pupil numbers should Abernyte Primary School be closed. This option is considered to be reasonable and further detail is provided in relation to educational benefits, travel, environmental impact, community impact and financial impact in Sections 10 -14.

6.4.3 There will be environmental benefits from a reduction in energy consumption if the school is to be closed. There is little negative environmental impact in relation to the transport of pupils or the travel arrangements of staff due to the relatively short distances and small numbers involved. There would be environmental benefits to Abernyte Primary School pupils being transferred to Inchtute Primary School in that they would be transported by the Council rather than travelling individually.

6.4.4 The revenue savings generated from closing Abernyte Primary School amount to approximately £108,213 including mothball costs annually. This is predominately made up of staff and building costs. The capital cost of upgrading the building of £333,090 would not be required. A capital receipt would be forthcoming if the building was sold or income would be generated through a lease.

6.4.5 Pupil numbers at Abernyte Primary School have been reducing year on year since 2010 when the school had 21 pupils. In the past 8 years, the projected number of P1 pupils to attend the school was 16; however, only 5 pupils were registered at Abernyte Primary School over that period.

The P1 intake figures over the next 4 years are also small, with a maximum of 5 pre-school pupils living in the catchment area. There were no pupils with an Abernyte catchment area address registered to start at Abernyte Primary School in August 2018.

- 6.4.6 It is not considered that the closure of the school would have a negative impact on the sustainability of the community. Abernyte is located approximately 3.4 miles from Inchtute and approximately 4.4 miles from Longforgan. The community currently travel to access health, retail and leisure facilities.
- 6.4.7 It is considered that the closure of the school would not have a significant impact on the community as evidence suggests that there are other facilities available for use with ACIC providing a catalyst to an active community. In addition, amenities including post offices, shops, GP surgeries, churches, hotels and schools are easily accessible in nearby villages.
- 6.4.8 Analysis of recent pupil information shows that the school roll is low primarily due to low pupil numbers within the catchment area and parents requesting placements at other local schools. Currently only 5 out of 11 children living in the catchment area attend Abernyte Primary School. In addition, there is no planned house building in the Abernyte Primary School catchment area over the next 4 years.
- 6.4.9 It is considered that closure of the school is the most appropriate response to the issue of decreasing numbers of young children living in the catchment area. This, coupled with parents choosing to place their children at other primary schools, has led to the very small school roll. There is no indication that the roll will increase in future years as pre-school children numbers are very low and are likely to remain so. There is no evidence to support extending the catchment area as the evidence gathered outlines that it is unlikely that the school roll would increase sufficiently to create a sustainable roll. There is no evidence to indicate that this option would have an adverse impact on the community, travelling arrangements or the environment.
- 6.4.10 This option, if implemented, brings educational benefits for the Abernyte Primary School pupils moving to Inchtute Primary School as they would benefit from peer support and learning groups across stages and between classes and early years provision.

7. THE OPTION FOR CONSULTATION FROM OPTIONS APPRAISAL

- 7.1 The Options Appraisal has demonstrated that the option for the permanent closure of Abernyte Primary School, with the pupils instead attending Inchtute Primary School, is the only reasonable alternative in response to the unsustainable school roll and represents the best value for education purposes. The following sections now consider that option in more depth.

8. INCHTURE PRIMARY SCHOOL

- 8.1 Inchtute Primary School is located in the village of Inchtute situated in the Carse of Gowrie, approximately 13 miles from Perth and approximately 9 miles from Dundee.

- 8.2 Inchtur Primary School provides non-denominational primary education to P1 – P7 pupils from the village of Inchtur and surrounding areas of Rait, Kilspindie, Kinnaird, Craigdallie, Knapp and Ballindean. There is also nursery provision at Inchtur Primary School which has provision for a maximum of 35 children at any one time, offering up to 70 part-time nursery places. Nursery provision at Inchtur Primary School will be increased by August 2020 to provide for the extension of 1140 hours of Early Learning and Childcare (ELC). A plan of the school site for Inchtur Primary School is attached as Appendix 4.
- 8.3 The catchment area for Inchtur Primary School adjoins the catchment areas for Abernyte Primary School, Errol Primary School, St Madoes Primary School, RDM Primary School, Balbeggie Primary School and Longforgan Primary School. Appendix 2 shows the present school catchment area for Inchtur Primary School.
- 8.4 Inchtur Primary School has capacity for 264 primary pupils. The pupil roll was 220 pupils (Census 2017) at Inchtur Primary School. The occupancy based on the Census 2017 is 83.3%. The pupil roll of the nursery was 39 pupils (Census 2017). The pupil roll at October 2018 is 216 pupils.
- 8.5 Historical and projected pupil roll data for Inchtur Primary School is attached as Appendix 6.
- 8.6 Inchtur Primary School has been graded 'B' for suitability (Satisfactory – Performing well but with minor problems - the school buildings and grounds support the delivery of services to children and communities). Inchtur Primary School was surveyed on 27 April 2016 and was graded condition 'B' (Satisfactory – performing adequately but showing minor deterioration).
- 8.7 The impact on the school roll of new housing in the Inchtur Primary School catchment area has been examined and future pupil projections have been considered using aggregated GP registration data.

The highest projected occupancy level, including house building, for future years at Inchtur Primary School is 97% by 2021/22. The capacity of Inchtur Primary School can be increased beyond 264 pupils without the school being extended.

9. EDUCATIONAL BENEFITS STATEMENT

- 9.1 This Educational Benefits Statement is written from the perspective of benefits, should the preferred option outlined in the options appraisal subsequently be implemented. This statement is focused on the educational benefits for pupils attending Inchtur Primary School.

Learning and Teaching

- 9.2 Children attending Inchtur Primary School have access to a wide range of teaching and support staff from early years and primary. Inchtur has a nursery and nine primary classes. This allows children to transition throughout the school as they get older and be taught by different practitioners in different settings.

- 9.3 Pupils have access to early years provision within the setting of the school, allowing for seamless transition to P1, with pupils already familiar with the physical setting as well as the opportunity for regular work with primary peers.
- 9.4 At Inchtute Primary School, staff are challenged and supported through a range of continuous professional development and review, which comes of having a Headteacher and Depute Headteacher who are not class committed, and teaching staff across nine classes. Staff collaborate across the school for planning, learning and teaching to ensure children receive experiences that are relevant and present clear challenge and enjoyment. Staff work together to moderate standards of learning and achievement in the school to ensure that children make appropriate progress in a structured and progressive way through Curriculum for Excellence levels.
- 9.5 At Inchtute Primary School, there are large classes, and all age groups within the school. The size of the classes affords all pupils the opportunity to build relationships at peer level and across all stages in the school and in mixed sex groups. This allows the sharing of ideas, peer support, informal mentoring and relationship building, all which contribute to the whole school experience for all pupils.
- 9.6 Inchtute Primary School has provision for two days consultancy led support from a Pupil Support Teacher, allowing group work to take place, as well as 57 hours of PSA support, which not only benefits pupils with ASN, but all other pupils, who can work in these groups, and benefit from short term support.
- 9.7 Work is differentiated to adapt to pupils' needs and pupils benefit from being able to work on co-operative learning tasks with others. Flexibility in staffing allows staff to be creative in planning for children with additional support needs both universally and for targeted need, thus addressing potential barriers to learning.
- 9.8 Teachers work collaboratively, at Inchtute Primary School, creating links in learning across stages on a termly basis. There are wide opportunities for collaborative/cooperative learning.
- 9.9 There are opportunities to improve arrangements for planning and taking forward improvements through effective self-evaluation for all staff. The support of a Headteacher and Depute Headteacher can be effective in these improvements.
- 9.10 A collegiate approach to professional engagement amongst all staff is evident within the school. Staff come together regularly to review and improve practice as a school, with partner services and other schools in the Local Management Group. There is a strong commitment across all staff to lead improvements in learning and teaching from evidence based research. This enhances the quality of learning and teaching through shared opportunities to develop effective approaches and to share and moderate standards.

Environment for Learning

- 9.11 In 2014 considerable resources were allocated to the school, which saw an extension which added three classroom areas, a General Purpose (GP) room, library, meeting and group rooms and a multi-purpose games hall.

- 9.12 In 2016 an outdoor Multi Use Games Area (MUGA) was opened, which can be used by children and the community.
- 9.13 The school grounds at Inchtute provide facilities for football, cricket, netball and athletics, with range of surfaces where physical activities can take place at all times of the year.
- 9.14 Inchtute has attractive, bright, well designed classrooms, naturally lit with modern teaching equipment and resources.
- 9.15 Classrooms are semi open plan, allowing the opportunity for children to work alongside each other in other classes and break out areas. These break out spaces allow for flexibility in teaching methods and afford a range of learning opportunities, from working in small groups, to vertical learning with children from other stages and classes.
- 9.16 All classrooms have teaching walls, with interactive whiteboards, providing the opportunity for all children to access the curriculum in modern and innovative ways, through the use of smartboards and interactive technology.
- 9.17 Inchtute Primary is accessible for children and adults with Additional Support Needs. It is on one level and has DDA compliant toilet facilities for children and adults.
- 9.18 Inchtute is an Eco school, benefitting from an outdoor area which facilitates eco learning and promotes health and wellbeing through play and team games, with features such as a willow tunnel, trim trail, wooded area, grass area and large hard standing playground for team games.

Experiences and Opportunities

- 9.19 The school has pupils of both sexes at each stage, allowing all pupils to interact and socialise with groups of children their own age and sex, at appropriate levels.
- 9.20 There are numerous opportunities for social interaction in terms of both peer activities in class and at break times and accessibility to school clubs and extra-curricular activities, team activities, sports, such as football and netball, music and drama. In addition, there are eight pupils councils, facilitated by a teacher, but pupil led. These are the Eco council, the School Improvement council, the Health and Citizenship council and the Friendship and Community council. These give pupils opportunities to lead and make decisions.
- 9.21 Health & Wellbeing is promoted at Inchtute, with a tuckshop run by pupils and health and enterprise group run activities for all pupils one afternoon a week. Inchtute also has a Bike crew who heighten awareness of bike/cycling safety through organising events for the school community. As well as promoting health & wellbeing, these also provide the pupils with life and social skills.
- 9.22 Inchtute has an active Parent Council, fully supportive of the school community.
- 9.23 There is provision at Inchtute of out of school care, which offers structured play for the children, and also provides a useful service to working parents and carers, allowing access to the workforce for parents who might otherwise be limited by school hours.

- 9.24 There are opportunities available to pupils through twinning links with Fleac in France, widening opportunities to experience new cultures and language, building on the work done in school.

Summary of Educational Benefits

- 9.25 Inchtur is a bright, modern school, with mixed sex classes at all stages in the school, including nursery.
- 9.26 The school roll allows all children to participate in peer support, classroom learning, and vertical learning groups, with the benefit of allowing children to have a wide and varied range of learning experiences.
- 9.27 Learning and teaching at Inchtur starts with the early years provision, supporting a seamless transition to Primary One.
- 9.28 The building lends itself to modern teaching methods, with good use of break out space, accessible and flexible teaching and outdoor areas and good facilities for sport and leisure.
- 9.29 Staffing levels at Inchtur are good, with ASN support, and non-class committed senior management.

10. DETAILED ANALYSIS OF THE PROPOSAL

- 10.1 This section provides a more detailed assessment of the proposal which is considered to be the only reasonable response to the unsustainable school roll. It considers the “rural school factors” of community impact and impact on travel arrangements, as well as the Educational Benefits Statement above, all of which were considered during the options appraisal process.

LIKELY EFFECT ON THE LOCAL COMMUNITY

Community Impact – Loss of the school

- 10.2 The number of primary pupils attending the school has fallen. However, it seems to be the case that families who do live within the catchment area are more mobile and exercising their right to choose other schools for their children.
- 10.3 The data on pupil numbers would suggest that there are families living in the area but that they are not attending the local school. It is clear that families living in the catchment area are travelling to access education as well as other services and so it appears to be an accepted part of life within the community.
- 10.4 The community has easy access to amenities. The village of Abernyte is close to good road links to both Perth and Dundee and a number of relatively large villages including Errol, Inchtur, Longforgan and St Madoes. These villages have amenities including post offices, shops, GP surgeries, churches, hotels and schools. The closest village is Inchtur which is approximately 3.4 miles away.

- 10.5 The Abernyte community is described by members of the community as 'strong, vibrant, active and dynamic'. The Abernyte Community Interest Company provides support and continues to develop the community by hosting community events throughout the year as well as continuing their heating collective.
- 10.6 In 2017, the Council closed schools in Calvine (Struan Primary School) and Enochdhu (Straloch Primary School) after they had been mothballed for 5 years. The evidence from both areas was that families were not deterred from moving into the area by having to travel to a neighbouring village. There are clear parallels with Abernyte in that the communities already travelled to other local communities to access services. Neither school/community was as accessible as Abernyte.
- 10.7 The evidence indicates that there will be little effect on the sustainability of the community if the school were to close.

Community Impact - Use of the Building

- 10.8 Abernyte Primary School is described by the community as a wider valuable resource to the community.
- 10.9 The Wine Club and Heritage Group both use the school throughout the year. There was concern from the wider community that if the school was to close there would be nowhere for the community to meet.
- 10.10 Within Abernyte itself, the church building is available for use by the community. If the school was to close, community events could continue in the church building. Alternatively, there are village halls and church buildings in nearby villages as well as the other Carse schools.
- 10.11 Closure of the school would provide opportunities for the building to be used for the benefit of the community, either for business or residential use, or for community use if a suitable plan was identified.
- 10.12 The Abernyte community requires to travel to access most services due to a lack of amenities within the village. This is facilitated by the fact that the village is close to good road links to both Perth and Dundee and a number of relatively large villages nearby. Many other communities in rural Perth and Kinross travel significantly further distances on more minor roads to access services.
- 10.13 The closure of the school would provide the community with an opportunity to use the building as a facility solely for community use. If the community does not use the school building upon closure, the church building is available for use by the community. Closure of the school would therefore have little impact on the existing arrangements of the community.

11. LIKELY EFFECT CAUSED BY DIFFERENT TRAVELLING ARRANGEMENTS

- 11.1 As Abernyte Primary School is a rural school, special regard was paid to the rural school factors. These were considered fully in the Options Appraisal stage and were a focus of the pre-consultation with the community.

- 11.2 The travel distance between Abernyte Primary School and Inchtute Primary School is approximately 3.4² miles. To attend Inchtute Primary School, current Abernyte Primary School pupils would have to travel between approximately 3.3 and 5.8 miles each way. The journey times would be approximately between 9 and 20 minutes by school transport. This is an increase of between approximately 3 and 3.2 miles each way for pupils. Travel time is increased from a 1 minute journey to a 9 minute journey for some pupils and up to 7 minutes extra travel for pupils living further from the school.
- 11.3 The effect on pupils of travelling to Inchtute Primary School from the Abernyte Primary School catchment is limited due to the relatively short distances involved and the small number of pupils requiring transport. Future transport would be provided by the Council for those pupils who live beyond the statutory travel distance to school, including those who currently attend Inchtute Primary School from Abernyte Primary School catchment as a placing request.
- 11.4 If Abernyte Primary School was permanently closed, all children would be transported by the Council to Inchtute Primary School. The travel distance between Abernyte and Inchtute is not far and in other more rural parts of Perth and Kinross it is not uncommon for pupils to travel greater distances on more minor roads to reach their school. Taking this option forward would not adversely affect the travel arrangements for current pupils and future pupils are unlikely to have hugely different travel arrangements.
- 11.5 Travelling for primary school education is common across Perth & Kinross because of the geography of the area. A number of pupils from Abernyte already travel to Inchtute Primary School by choice as the result of successful placing requests.
- 11.6 Staff in Perth and Kinross tend to travel throughout the area to work in schools. Many staff do not live within the catchment area of the school they work in. A distance of 3.4 miles is a relatively short distance to travel in rural Perth and Kinross. It is therefore considered that there is very limited impact on staff travelling arrangements.
- 11.7 The community currently requires to travel to access other services and there should be no other additional impact on travel arrangements should the school close as there are other buildings nearby which can be accessed by the community for social use.

12. ENVIRONMENTAL IMPACT

- 12.1 There are 6 pupils who already travel from the Abernyte Primary School catchment area to other schools in Perth and Kinross as the result of successful placing requests, for which there is an environmental impact. This would be offset by the requirement to run Abernyte Primary School as an operational building.
- 12.2 Pupils from Abernyte catchment area would be transported by the Council to Inchtute Primary School which reduces environmental impact as they would travel together rather than separately with parents.
- 12.3 The community already requires to travel to access other services such as GP and dental surgeries, shops, post offices and leisure facilities. Therefore there will be little environmental impact if Abernyte Primary School were to close.

² Approximate distance sourced from Google Maps

13. EFFECTS ON STAFF AND SCHOOL MANAGEMENT ARRANGEMENTS

- 13.1 Where necessary, any aspect of the implementation of these proposals that impacts on staff will result in consultation with the relevant trade unions and the individuals concerned.

14. FINANCIAL IMPLICATIONS

- 14.1 The annual recurring net savings of the preferred option is made up of staff costs and building running costs. The financial implications of this proposal is that there is a saving of approximately £108,213 to be made if the proposal is to be implemented.
- 14.2 The annual cost of retaining Abernyte Primary School until disposal is £750 which is made up of costs for energy and rates.
- 14.3 The capital cost of upgrading the building of £333,090 would not be required.
- See Appendix 8 for detailed financial information.
- 14.4 Any savings arising from the proposed option to close Abernyte Primary School will be allocated against Education and Children's Services budget savings targets which have currently been set for the period 2018/19 – 2020/21. This will mitigate against making alternative budget reductions within other areas of Education and Children's Services, with a corresponding reduction in service delivery in that area.
- 14.5 The annual budget is built reflecting cost drivers such as the number of schools, buildings, staff and pupils. Therefore, if Abernyte Primary School were to be closed, then future years' budgets would not contain any allowance for staffing Abernyte Primary School and there would be reduced property costs (and possibly no costs, should the building be declared surplus to the Council's requirements). Any per capita budgets relating to individual pupils would continue to be budgeted against the school that these pupils would attend following the closure of Abernyte Primary School.
- 14.6 It is envisaged that the existing Abernyte Primary School will be declared surplus to the requirements of Perth and Kinross Council. This will minimise the financial risks associated with vacant buildings.
- 14.7 A capital receipt would be forthcoming if the building was sold or income could be generated through a lease.
- 14.8 Combining pupils from both catchment areas into one school maximises use of the school estate and represents good asset management.

15. OTHER ISSUES

Management of Proposals

- 15.1 It is intended that pupils from Abernyte Primary School will be permanently integrated within Inchtute Primary School from 2 July 2020, or as soon as possible thereafter.

This will allow the Council to conduct the necessary consultation in accordance with the relevant statutory frameworks.

16. MITIGATION OF ADVERSE EFFECTS

- 16.1 The main adverse effect for some children from Abernyte is the length of journey from Abernyte to Inchtute. However a number of pupils are already making this journey as the result of a successful placing request.
- 16.2 Funded school transport would be provided by Perth and Kinross Council to primary pupils from Abernyte catchment area attending Inchtute Primary School.

17. CONCLUSION

- 17.1 In November 2016, it was agreed as part of the School Estate Transformation project that an options appraisal should be carried out on Abernyte Primary School due to under-occupancy. At that time, the school had a pupil roll of 8 (School Census 2015) and an approved capacity of 44 giving an occupancy level of 18%. The school roll has since fallen to 6 pupils giving an occupancy level of 13.6%.
- 17.2 Data on children under 5 registered with GP practices living in the Abernyte catchment tends to support the comments made by the community in relation to the number of families living in the catchment area which has remained low over a number of years.
- 17.3 Although the school is described as important to the community, a number of pupils attend alternative primary schools.
- 17.4 Data from the NHS shows a small number of children living in the catchment area who are due to start in P1 over the next 4 years.
- 17.5 The projected pupil roll for Abernyte Primary School is likely to be a maximum of 6 pupils in the next 4 years. This is insufficient to create a sustainable roll. It is also likely, given past patterns, that parents of new P1s may choose to send their child to Inchtute Primary School, which is approximately 3.4 miles away, or an alternative primary school and that the roll may not be 6 pupils.
- 17.6 As part of the review, a pre-consultation exercise was carried out with the local community. As a result of the pre-consultation exercise, an assessment was also carried out in relation to a potential catchment area change, including meeting parents/carers of children living in the areas who would be affected by this. The outcome of this assessment was that if the catchment was extended, the parents/carers of Inchtute Primary School children living in the catchment area, who engaged with Council Officers would not choose to send their children to Abernyte Primary School. There would, therefore, be insufficient pupil numbers to increase the roll and make it sustainable in future years.
- 17.7 It is likely that house building in the Abernyte Primary School catchment area over the next 4 years will continue to be limited with few, if any, additional pupils for the school as a result.

- 17.8 Future pupil projections have been considered and Inchtute Primary School can accommodate all projected and potential pupils from the combined catchment areas. A higher occupancy level maximises use of the school estate and represents good asset management.
- 17.9 Travel distance to the neighbouring school is not excessive and pupils attending Inchtute Primary School already make this journey. However, it is recognised that adverse weather in the winter can impact on travel arrangements in this area.
- 17.10 Members of the community are travelling to access other services such as GP and dental surgeries, shops and post offices and so it appears to be an accepted part of life within the community.
- 17.11 Environmental impacts have been summarised and detailed work will be done as part of the environmental assessment for this proposal.
- 17.12 The only option which is considered to be a reasonable response to address the issue of an unsustainable school roll is to consider closing Abernyte Primary School, with the pupils transferring to Inchtute Primary School. Special regard has been given to the rural school factors and the assessment of these is set out in the options appraisal and in this Proposal Paper. The anticipated educational benefits which are likely to occur, should that option be progressed and implemented, are also considered.
- 17.13 It is, therefore, recommended that the most appropriate response to the issues identified in relation to the very low pupil roll at Abernyte Primary School is that a statutory consultation exercise takes place on a proposal to close the school. If the proposal was to be implemented, pupils would be transferred to Inchtute Primary School. The delineated area of Inchtute Primary School would be extended to subsume the whole catchment of Abernyte Primary School.

18. RESPONDING TO THE PROPOSAL

- 18.1 Interested parties are invited to respond by making online, electronic or written submissions on the proposal or any alternative proposals.

Online: www.pkc.gov.uk

By e-mail: ECSStatutoryConsultations@pkc.gov.uk

In writing: Abernyte Primary School Consultation, Education and Children's Services, 2 High Street, Perth, PH1 5PH

no later than close of business on Friday 14 December 2018.

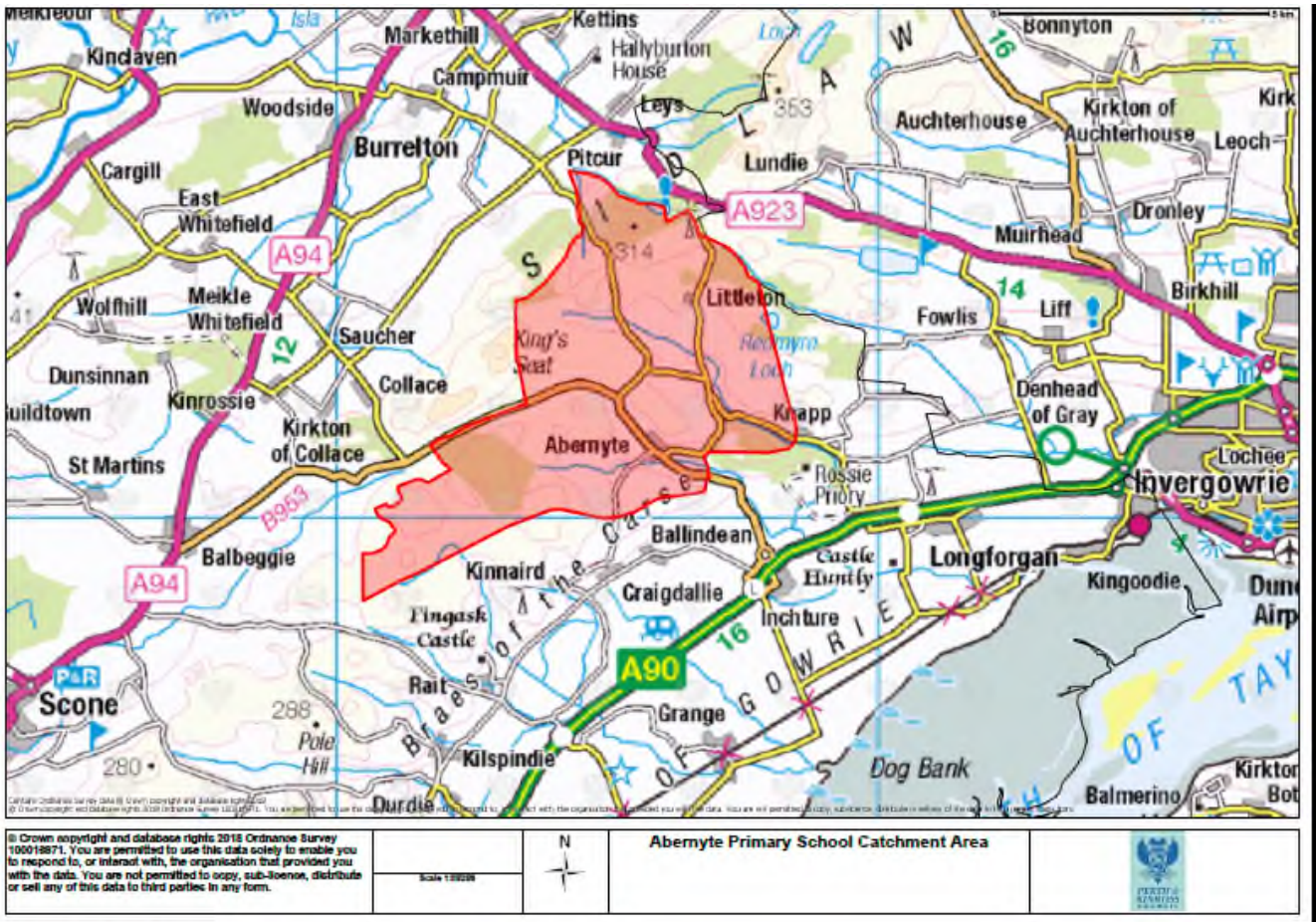
- 18.2 A form is provided at Appendix 7 for the convenience of those wishing to respond.

Its use is not compulsory. However, those wishing to respond are invited to state their relationship with the school – for example, “pupil”, “parent”, “grandparent”, “former pupil”, “teacher in school”, “member of the community” etc. Responses from the Parent Councils, staff, and Pupil Council are particularly welcome.

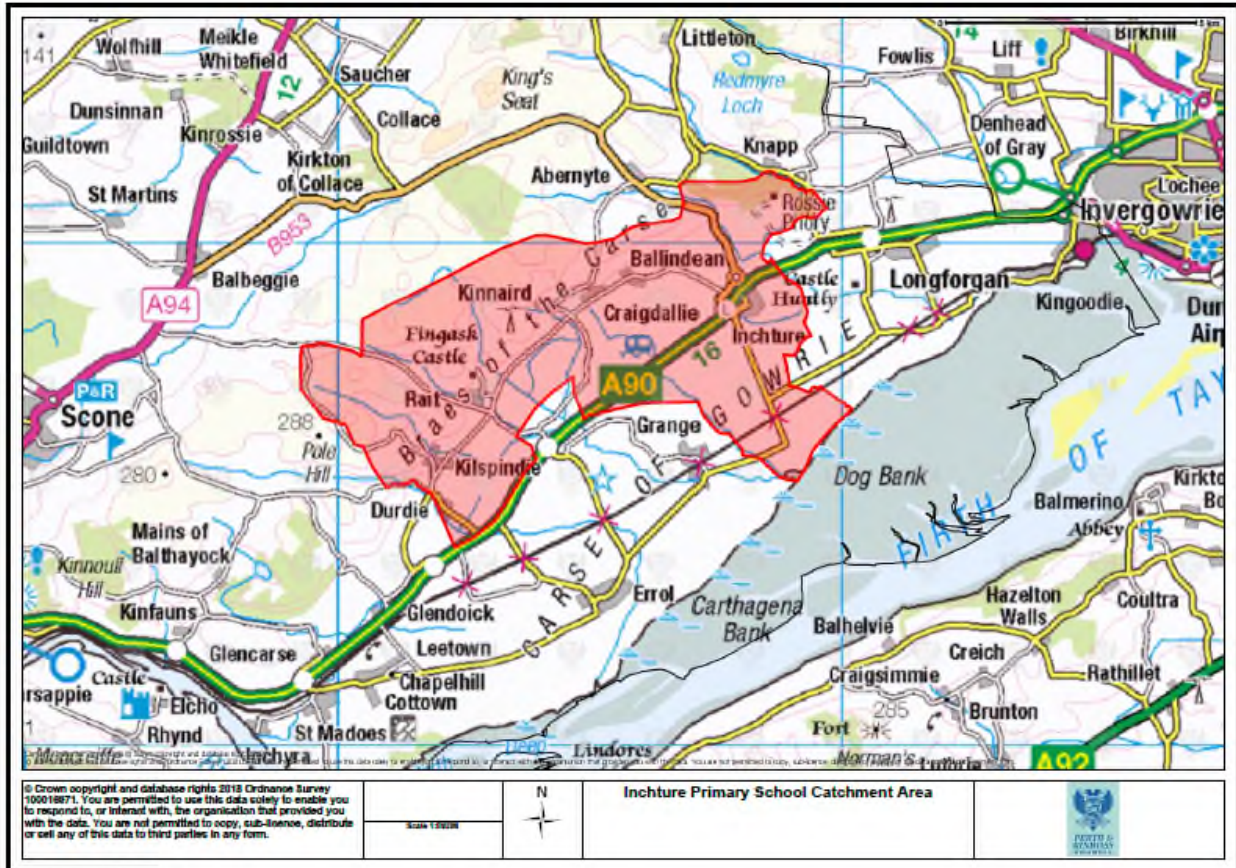
- 18.3 Those sending in a response, whether electronically or by letter, should know that their response will be open to public scrutiny and may have to be supplied to anyone making a reasonable request to see it.
- 18.4 If they do not wish their response to be publicly available, they should clearly write on the document: "I wish my response to be considered as confidential with access restricted to elected members and council officers of Perth and Kinross Council." Otherwise, it will be assumed that the person making the response agrees to it being made publicly available.

24 October 2018

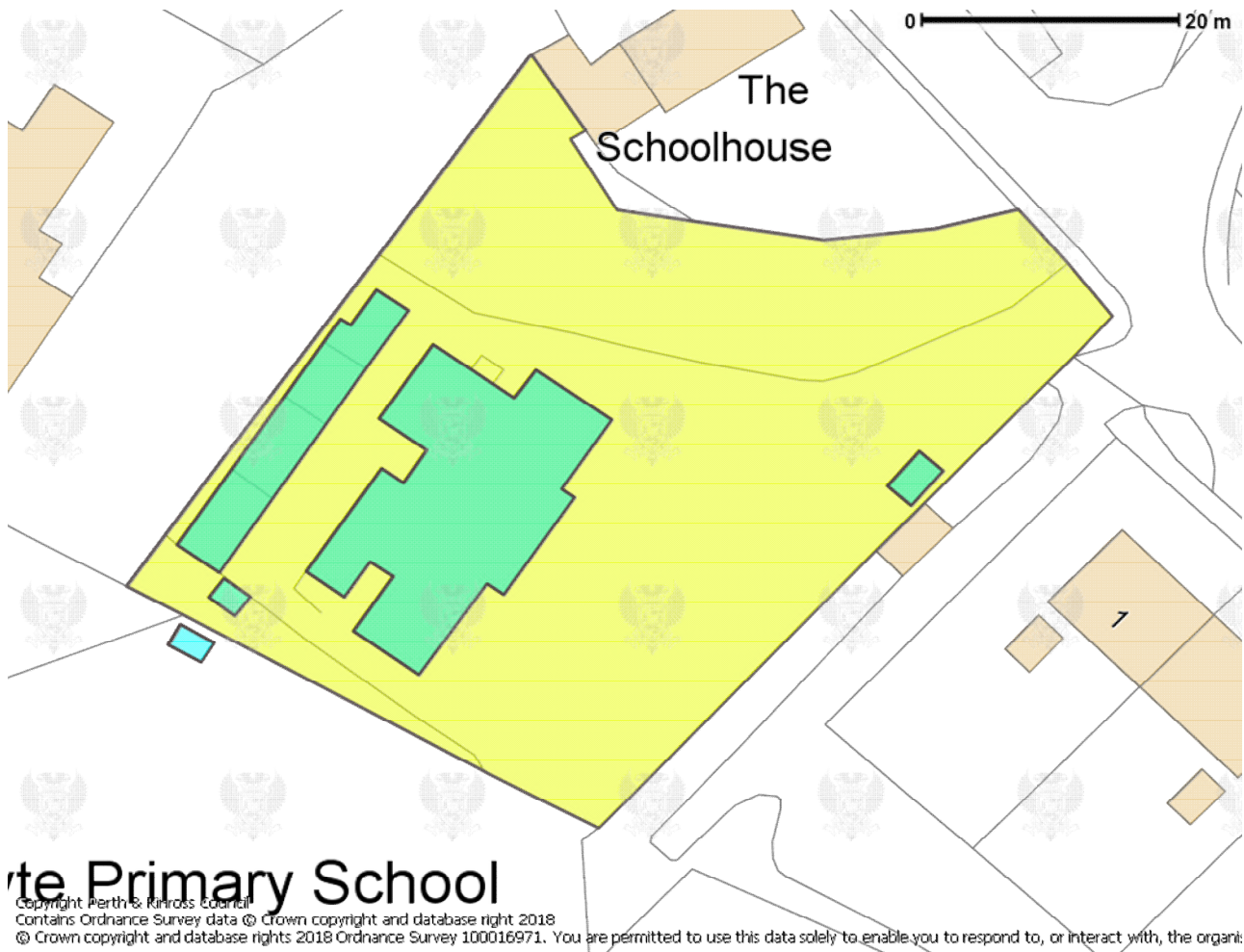
CATCHMENT AREA OF ABERNYTE PRIMARY SCHOOL



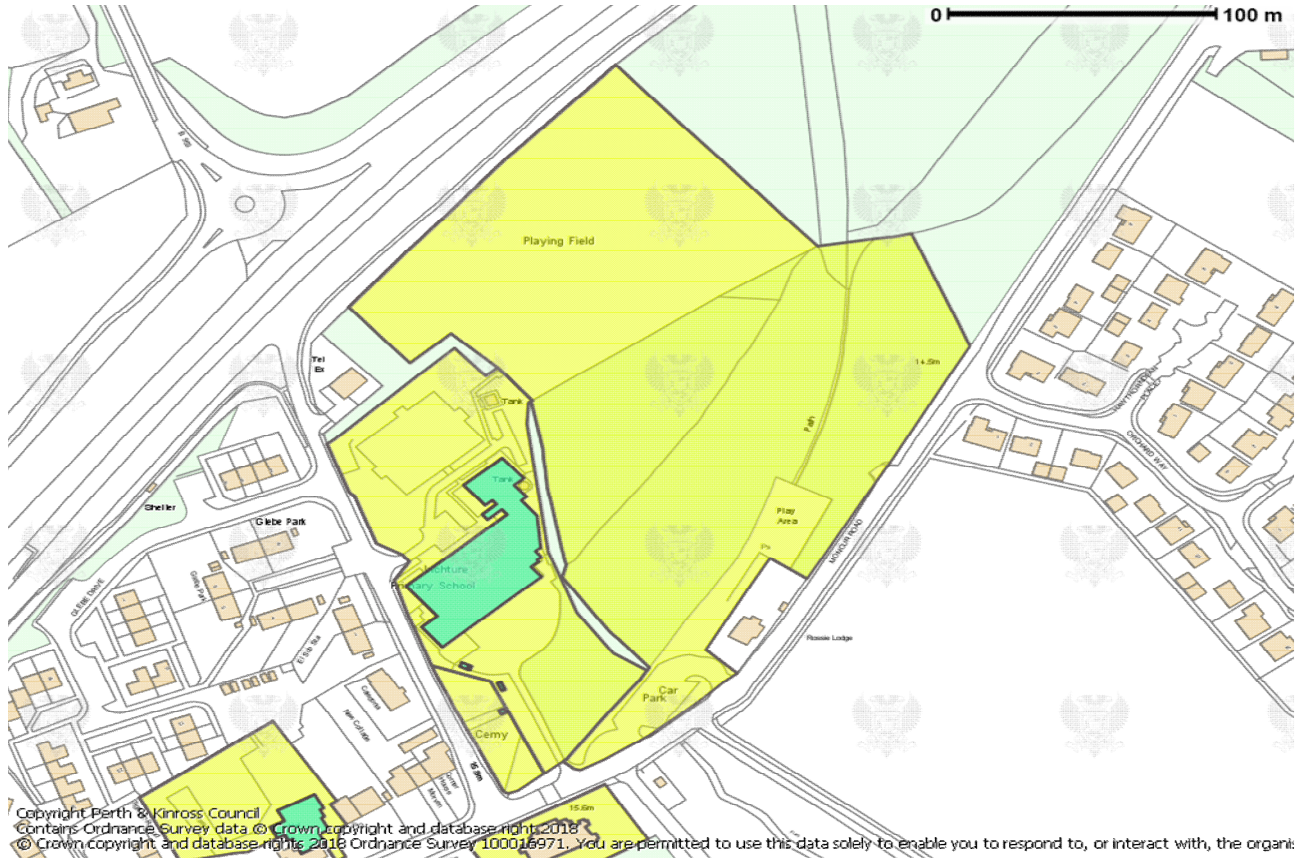
CATCHMENT AREA OF INCHTURE PRIMARY SCHOOL



OUTLINE OF ABERNYTE PRIMARY SCHOOL BUILDING AND THE SCHOOL



OUTLINE OF INCHTURE PRIMARY SCHOOL BUILDING AND THE SCHOOL GROUNDS



HISTORICAL AND PROJECTED PUPIL ROLL DATA FOR ABERNYTE PRIMARY SCHOOL

	2010	2011	2012	2013	2014	2015	2016	2017
Capacity	44	44	44	44	44	44	44	44
Pupils in school	21	15	15	14	11	8	7	5

Source: [Scottish Government – School Education - Datasets](#)

PROJECTED PUPIL NUMBERS

	2018/ 2019	2019/ 2020	2020/ 2021	2021/ 2022
Abernyte Primary School Capacity	44	44	44	44
Abernyte Primary School Roll	6	6	3	5

ANALYSIS OF SCHOOL INFORMATION

School	Capacity	Condition Rating	Suitability Rating
Abernyte	44	B	A

APPENDIX 6

HISTORICAL AND PROJECTED PUPIL ROLL DATA FOR INCHTURE PRIMARY SCHOOL

	2010	2011	2012	2013	2014	2015	2016	2017
Capacity	125	125	146	146	264	264	264	264
Pupils in school	118	129	148	163	166	181	210	220

Source: [Scottish Government – School Education - Datasets](#)

PROJECTED PUPIL NUMBERS

	2018/ 2019	2019/ 2020	2020/ 2021	2021/ 2022
Inchtire Primary School Capacity	264	264	264	264
Abernyte Primary School Pupils	6	6	3	5
Inchtire Primary School Pupils	221	235	239	246
Inchtire Primary School Roll with Abernyte Primary School Pupils	227	241	242	251

ANALYSIS OF SCHOOL/PUPIL INFORMATION

School	Capacity	Condition Rating	Suitability Rating
Inchtire	264	B	B



**Education and Children's Services
Consultation Response Form**

Consultation Proposal:

- Provision of a school at Abernyte Primary School be permanently discontinued with effect from 1 July 2020, or as soon as possible thereafter;
- That the pupils of Abernyte Primary School catchment area permanently receive their education at Inchtute Primary School from 2 July 2020, or as soon as possible thereafter; and
- That the delineated catchment area of Inchtute Primary School be permanently extended to subsume the whole delineated catchment area of Abernyte Primary School from 2 July 2020.

Please tick the response which applies to you/your organisation

- I agree with the proposals as outlined in this consultation.....
- I disagree with the proposals as outlined in this consultation

I would like to make the following representation for consideration:
(if required, please continue on the other side of this sheet)

Are there any other alternatives which you consider should have been included?

This part of the form must be completed for a valid response:

Name: _____ Address: _____

 Email: _____ Postcode: _____

Your Interest: (please tick)

Parent Child / Young Person Staff Other *

*Other: (please specify)

Elected Member / MSP / MP Member of Community Council

I wish my response to be considered as confidential with access restricted to Elected Members and Council Officers of Perth & Kinross Council

APPENDIX 8

Current revenue costs for school proposed for closure			
Name of School: Abernyte Primary School (Column 1)	Costs for full financial year (2017-18) (Column 2)	Additional financial impact on receiving school [Inchturh] (Column 3)	Annual recurring savings (column 2 minus column 3) (Column 4)
School costs			
Employee costs -			
teaching staff	£ 76,098.00	£ -	£ 76,098.00
support staff	£ 17,907.00	£ -	£ 17,907.00
teaching staff training (CPD etc)	£ 238.00	£ -	£ 238.00
support staff training	£ -	£ -	£ -
Supply costs	£ 1,335.00	£ -	£ 1,335.00
Slippage Target	-£ 2,495.00	£ -	-£ 2,495.00
Building costs:			
property insurance	£ -	£ -	£ -
non domestic rates	£ -	£ -	£ -
water & sewerage charges	£ 191.00	£ -	£ 191.00
energy costs	£ 3,698.00	£ -	£ 3,698.00
cleaning (contract or in- house)	£ 7,623.00	£ -	£ 7,623.00
building repair & maintenance	£ 5,589.00	£ -	£ 5,589.00
grounds maintenance	£ 437.00	£ -	£ 437.00
facilities management costs - note 6	£ -	£ -	£ -
revenue costs arising from capital	£ -	£ -	£ -
Other	£ 684.00	£ -	£ 684.00

School operational costs:			
learning materials	£ 552.00	£ 248.40	£ 303.60
catering (contract or in-house)	£ -	£ -	£ -
SQA costs	£ -	£ -	£ -
other school operational costs (e.g. licences)	£ -	£ -	£ -
Transport costs: note 3			
home to school	£ 8,458.80	£ 11,574.80	-£ 3,116.00
other pupil transport costs	£ -	£ -	£ -
staff travel	£ 470.00	£ -	£ 470.00
SCHOOL COSTS SUB-TOTAL	£ 120,785.80	£ 11,823.20	£ 108,962.60
Income:			
Sale of meals	£ -		£ -
Lets	£ -		£ -
External care provider	£ -		£ -
Other	£ -		£ -
SCHOOL INCOME SUB-TOTAL	£ -		£ -
TOTAL COSTS MINUS INCOME FOR SCHOOL	£ 120,785.80	£ 11,823.20	£ 108,962.60
UNIT COST PER PUPIL PER YEAR (6 pupils)	£ 20,130.97	£ 1,970.53	£ 18,160.43

Annual Property costs incurred (moth-balling) until disposal	
property insurance	£ -
non domestic rates	£ -
water & sewerage charges	£ 150.00
energy costs	£ 600.00
cleaning (contract or inhouse)	£ -
security costs	£ -
building repair & maintenance	£ -
grounds maintenance	£ -
Other	£ -
TOTAL ANNUAL COST UNTIL DISPOSAL	£ 750.00

Table 4

Non-recurring revenue costs	
	£ -
TOTAL NON-RECURRING REVENUE COSTS	£ -

Table 5

Impact on GAE	
based on pupils going to Inchtute PS	£ 18,840.00
GAE IMPACT	£ 18,840.00

Notes

1. The total costs incurred for teaching staff (row 5) and support staff (row 6) are required to be included. Column 2 should include the current costs for a full financial year for the school proposed for closure, and column 3 should include the *additional* cost to the receiving school as a result of staff transferring.

For teaching staff, this should include regular teachers, itinerant teachers, learning support teaching staff and special education (ASN) staff. Itinerant teaching staff includes central support services such as English as additional language support, hearing, visually impaired services, educational psychology services.

For support staff, this should include classroom assistants, administration staff and janitorial staff.

For all staff the costs entered should include salary, NI and pension costs.

If the school proposed for closure has less than 3 staff members, then the cumulative staff costs only should be given in row 5 (for both teaching and support staff), so as to avoid possible disclosure of individual salaries.

Training costs should be identified separately in rows 7 and 8.

2. Supply costs to cover teaching and support staff. This may be held in a central budget, be devolved or shared across the budgets.

3. 'Home to school' pupil transport costs should include those school transport costs incurred in accordance with Council policy. 'Other pupil transport costs' will cover costs incurred for the transport of pupils for activities such as swimming etc

4. Row 30 of column 3 should include the additional transport costs related to the increased home to school transport arrangements that are put in place in accordance with Council policy. This figure is therefore likely to be considerably higher than current costs.

5. This table is to capture the impact on the revenue support grant as a result of changes to GAE

6. Facilities management costs will include costs related to caretaking, janitorial and security.

7. The capital costs for the receiving school should be taken across the life cycle of the school in line with the life expectancy of that school.

The capital costs for the school proposed for closure should be taken across the same life cycle period.

For all staff the costs entered should include salary, NI and pension costs.

If the school proposed for closure has less than 3 staff members, then the cumulative staff costs only should be given in row 5 (for both teaching and support staff), so as to avoid possible disclosure of individual salaries.

Training costs should be identified separately in rows 7 and 8.

2. Supply costs to cover teaching and support staff. This may be held in a central budget, be devolved or shared across the budgets.

3. 'Home to school' pupil transport costs should include those school transport costs incurred in accordance with Council policy. 'Other pupil transport costs' will cover costs incurred for the transport of pupils for activities such as swimming etc

4. Row 30 of column 3 should include the additional transport costs related to the increased home to school transport arrangements that are put in place in accordance with Council policy. This figure is therefore likely to be considerably higher than current costs.

5. This table is to capture the impact on the revenue support grant as a result of changes to GAE

6. Facilities management costs will include costs related to caretaking, janitorial and security.

7. The capital costs for the receiving school should be taken across the life cycle of the school in line with the life expectancy of that school. The capital costs for the school proposed for closure should be taken across the same life cycle period.