



# **Walking the Perth & Kinross Council Core Paths**

**A Guide to Possible Routes**

**By T. A. Lennox and P. Higgins**

**This collection is dedicated to all those who lost their lives to Covid-19 and to all those who worked so hard to keep us all safe and well.**

**It is also published to raise funds for the management of the Perth & Kinross Council core paths via donations at Perth & Kinross Countryside Trust.**

## Dedication

This volume is dedicated to all those who lost their lives to Covid-19 and to all those who worked so hard to keep us all safe and well.

### First Edition 2022



Clach a' Choin Publications

ISBN 978-1-8381894-4-0

Text © T. A. Lennox. All photographs © T. A. Lennox.

Maps © P. Higgins. The maps have been developed from the following open sources: - (1) OpenStreetMap® open data, licensed under the Open Data Commons Open Database License (ODbL) by the OpenStreetMap Foundation (OSMF) (2) Creative Commons Attribution-ShareAlike 2.0 licence (CC BY-SA 2.0). This contains public sector information licensed under the Open Government Licence v1.0.

The rights of T. A. Lennox and P Higgins to be identified as the authors of this work has been asserted by them in accordance with the Copyrights, Designs, and Patents Act 1988. All rights reserved. No part of this publication may be reproduced, stored, or transmitted in any form or by any means electronic, mechanical or photocopying, recording or otherwise, without the express permission of the authors.

## Disclaimer

The author has attempted to present a general guide to walking routes facilitated by the Perth & Kinross Council Core Paths Plan Maps. These walks have been arrived at by the author's study of the Core Paths Plan Maps and conditions on the ground. As far as the author is aware, these routes do not impinge on walks established by other authors but it is recognised that many of the walks may well have already been developed by others, particularly those with local knowledge of a specific area. While the author has attempted to be accurate, within the bounds of his knowledge of the core paths, no responsibility is accepted for errors, omissions, or changes in the details given. This guide is presented on the basis that the identified Perth & Kinross Core Paths are publicly accessible and that the associated routes identified here are accessible under the Land Reform (Scotland) Act 2003. No liability whatsoever is accepted for the outline descriptions provided here nor for the accuracy of the maps. Conditions on these routes and accessibility are naturally variable and landowners manage access which can vary e. g. according to land, water, forestry, farming, game, and fishing activities, and boundary management. Perth & Kinross Council may also modify the routes of Core Paths, particularly in response to access issues. Walkers using this guide are responsible for their own safety, the viability of the routes they use, and compliance with all access and management guidance and constraints. They must exercise their own responsibility for deciding whether or not these guides are suitable. The author will be happy to correct any errors or omissions.

## Donations

Donations for the use of this publication may be made to the Perth & Kinross Countryside Trust at [pkct.org/donate/donate-to-pkct](http://pkct.org/donate/donate-to-pkct) and will help to develop, improve and conserve core paths throughout the area.

*Front Cover: - The view SW along Core Path BURR/13 near St. Martins (Map 44)*

## 1. Introduction

Within the Perth & Kinross Council area boundaries there is an abundance of “good walking” country and there are already many good guides to established walks (see e. g. The Perth & Kinross Countryside Trust- <https://www.pkct.org>). The aim of this guide is to illustrate some possibly lesser-known walks using the designated Perth & Kinross Council Core Paths and to encourage everyone to “keep walking” whatever our age or abilities. It is also hoped that it will assist those from outwith the area who are less familiar with the possibilities for walking. The guidelines to the walks are very brief and general in order to include as many walks as possible but, even then, it has not been possible to include all the potential walks and walk options. The route guidelines are based on the author’s own walking experiences, in conjunction with his fellow walkers, but where there are related potential (but not actually trialled) walks these are indicated in case they are of use. Many others will have developed their own and better walks. Not all core paths are included in walks here since many are isolated from other core paths. Long distance walks and paths have been excluded. The general focus has been on possible circular walks. Many of the walks could be started from several different access points which are left to the judgement of the reader. The Perth & Kinross Council Core Paths Plan Maps (CPPM) [Perth & Kinross Council - Core Paths Plan ([pkc.gov.uk](http://pkc.gov.uk))] have been developed to meet their statutory obligations and as such are not intended as walking guides. Nevertheless, they do provide useful information for walkers and indeed many walkers already use them for guidance.

The walks cover a range of ground conditions but are feasible with reasonable fitness. Unfortunately, it is not possible to classify suitable walks for those with restricted fitness or capability since the routes are not managed and conditions on the ground are so variable. However, it is hoped that less able readers may be able to select some appropriate walks, or parts of walks, from the descriptions. Likewise, none of the walks are classified as suitable for cyclists or runners but many could be feasible for cycling and running. It is often said that an “ideal” walk is circular, scenic, visits interesting places, and has a café or, at least, a seat at the “half-way point”. A very few of the walks presented here achieve these “ideal” conditions. Most can be accomplished within a time of 3-5 hours and are intended as “day” walks with a break for lunch. The various walks are presented in abbreviated form, in Core Path Plan Map (CPPM) order, The walk descriptions reflect the ground conditions encountered on the day of the walk.

Not all routes will be accessible at all times. Severe weather, e.g., wind, snow, ice, flooding, fog, will make many of the routes impassable at any time of the year. There is e.g., regular flooding around the Rivers Tay and Earn and around the Pow Water. Forestry management will plough up tracks. Licensed shooting takes place at all times of the year over the whole area. Farm management will restrict access on occasions and electric fences abound. So, walkers must be prepared for all conditions and all eventualities. The author cannot accept any liability whatsoever for the guidance provided. Walkers themselves must carry out appropriate checks and be fully prepared. Many of the walks described use other paths and tracks to link sections of the core paths on the basis of the Land reform (Scotland) Act 2003. Readers will, no doubt, “mix and match” their own preferred walks, based on the core paths, rather than follow these guidelines. While Perth & Kinross Council have placed green pointers on signposts “on the ground” to indicate the core paths, these are not guaranteed. Some routes also have Perth & Kinross yellow direction indicator arrows, on fences and posts, at intermediate points to indicate the route. However, the latter are inevitably considerably spaced even where they exist. Hence it is vital that walkers carry Ordnance Survey (OS) maps, a compass, and the Core Paths Plan Maps so that they can confirm the route. Not all paths and tracks are marked on the OS maps and Core Paths Plan Maps, and markings are not consistent between the various maps. Similarly, many unrecorded additional paths and tracks will be found. Hence considerable care in route following can be required. For those less experienced with navigation there are a number of walking groups (e. g. The Ramblers Association, and the

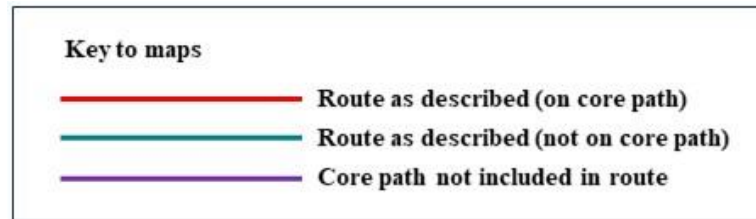
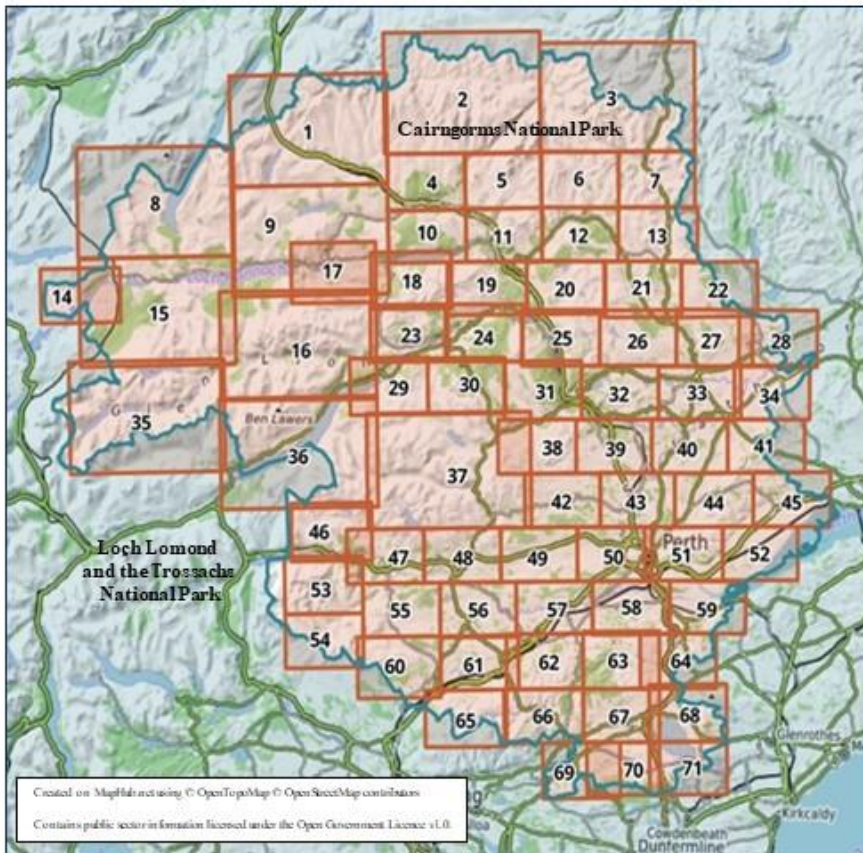
University of the Third Age-U3A) in the area and the Crieff Walking Festival- “The Drovers Tryst”- see <https://www.droverstryst.com> has many introductory walks.

While it is well known that we should take care in the countryside that advice is repeated here for completeness. Land and water management in Perth & Kinross are vital to the supply of food, drink, and energy, to the management of trees, plants, and wildlife, and to leisure and tourism activities, as well as to the livelihood of all those who live on and “off” the land. It is therefore vital that we walkers work within the constraints and in particular follow the Country and Water Codes, and local guidance. Please do not feed any animals. Please do not walk on or near farms during the spring “lambing season”. Separation of cows and calves can take place in the autumn when both cows and calves can be very agitated and dangerous. Cattle can mistake bags carried in your hand as “feed bags” and charge at you to investigate. Please do not take dogs anywhere near farm animals or horses and keep them under control at all times-other walkers can be very frightened of them even although you consider your dogs to be “friendly”. Horses can be easily “spooked” so please keep well away. Please do not disturb the rivers and lochs since fishing and waterbirds depend on them. Since this is “tick country” keep legs and ankles covered up and check for ticks after walking (in high vegetation they might even drop down your neck). Adders have been seen in specific areas. Some guidance is given with regard to potential parking (PP) but does not imply or indicate public parking rights. Check locally and seek permission as appropriate. Please do not block field entrances, tracks, or passing places. Many routes can be accessed by public transport or cycling.

Perth & Kinross is a very scenic and historic area. So, you can, as you wish, choose many themes for your walks, e. g. “Big Tree Country”, “Macbeth Country”, “Pictish Stones”, “Iron Age Forts”, “Roman Remains”, “River walks”, “Hill Walks”, “Castles”. See e. g. the “Exploring Perthshire’s Past” maps prepared by Perth & Kinross Heritage Trust ([www.pkht.org.uk](http://www.pkht.org.uk)) and their other publications (e. g. “General Wade’s Legacy”, “The Carpow Log Boat”), Also see the excavations of the Pictish capital near Forcandenny e. g. at [eprints.gla.ac.uk/203692](http://eprints.gla.ac.uk/203692). It is also possible to envisage some longer walks e. g. following paths along the east bank of the River Tay from Perth to Ballathie (and possibly beyond) although, currently not all the river bank is accessible or practicable and there is considerable flooding at times. It would be helpful if the old railway bridge at Ballathie could be made publicly accessible for walkers and cyclists. The Perth & Kinross Countryside trust has already developed the “River Tay Way” (see <https://www.pkct.org>). There are already plans in place for a long-distance path from Perth to Lochearnhead but this is taking some time to implement- the section from Crieff to Lochearnhead is summarised here. Whatever theme you choose or otherwise remember the saying “keep walking and you’ll stay on your feet”.

## 2. Maps and Possible Walks

Overview of PKC Core Paths Plan



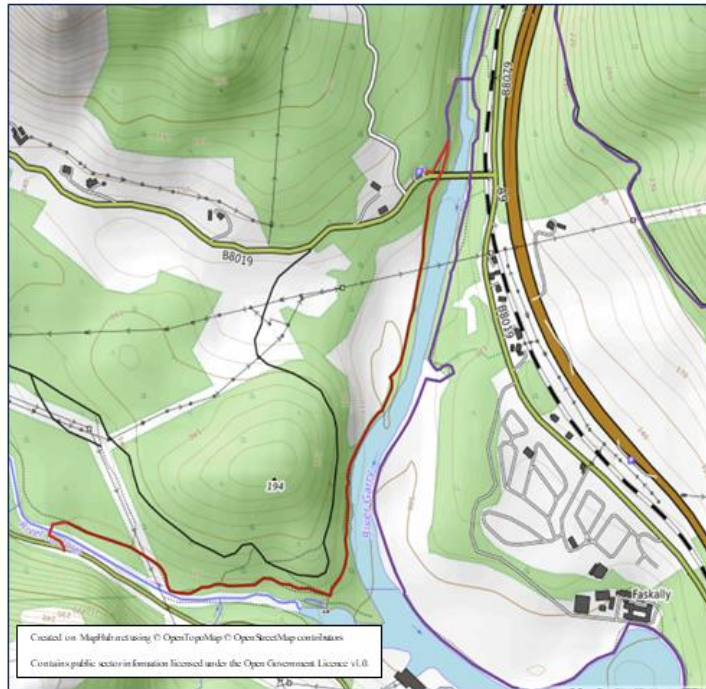
Core paths Plan Maps referred to in this publication are readily available, for inspection and download, on the Perth & Kinross Council website [[Perth & Kinross Council - Core Paths Plan \(pkc.gov.uk\)](http://Perth & Kinross Council - Core Paths Plan (pkc.gov.uk))]. The overview Map, given adjacent, for all the Perth & Kinross Core Paths Plan Maps shows the location and number of all the individual Core Path Plan Maps in the Council Area. The individual outline walking guides given here are numbered in the order of the Core Path Plan Map numbers i. e. from W to E and N to S starting from the NW of the area, and are presented in that order. Many of the individual Core Path Plan Maps do not have any walking guides presented here for a variety of reasons. For Core Path Plan Maps 1 to 7 no walks are described since the paths are the responsibility of the Cairngorm National Park. Several other maps have no associated walks, either because there are no “suitable” walks in the context of this guide, or because the area has not been walked. These walking guides are accompanied by generic maps, based on the Core Path Plan Maps, using open-source data (see copyright statement above). These generic maps indicate the routes, and the topography, and are intended as general guides to the routes. The key to these generic maps is given above. Detailed route planning and following should be based on the relevant Core Path Plan Map (CPPM) and Ordnance Survey (OS) Map both of which are identified in each walking guide. An index to the walks is given at the end in Section 3.

There are many possible walks in the Killiecrankie area. Just a few circular walks are described.

### 11.1. Killiecrankie to the River Tummel Circular

CPPM 11 OS 43, 52 PP In the car park at the W end of the road bridge over the River Garry on the B8019 at the S end of the Pass of Killiecrankie.

11.1. Killiecrankie to the River Tummel Circular



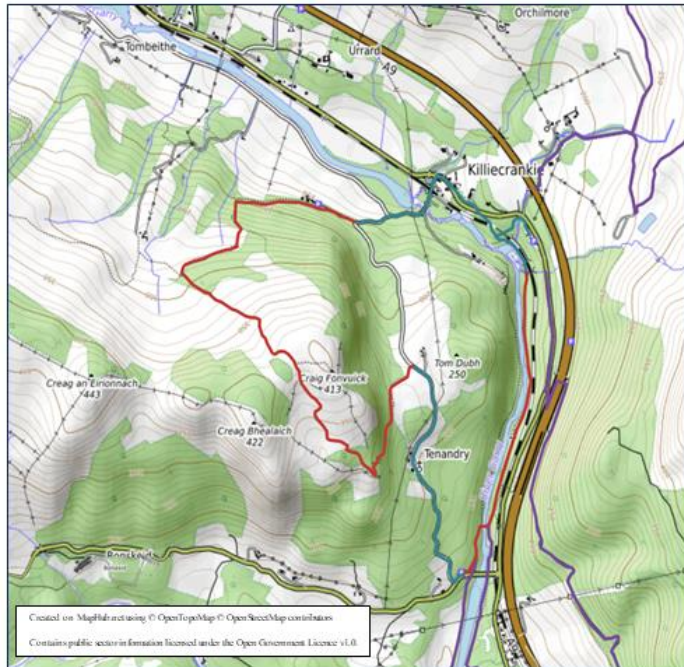
*Rapids on the River Tummel*

From the car park take the signed steps down the N side of the road bridge to the signposted tracks. Walk N for a short distance to turn sharp right at the signpost and follow the track (KCKI/19) S under the road bridge and alongside the River Garry all the way down to the junction of the River Garry and the River Tummel. Turn right to follow the path (KCKI/19) near the River Tummel W (diverting to the riverbank shortly afterwards, and subsequently at various points, to view the rapids) all the way to the Coronation Bridge over the River Tummel. Either retrace your steps or, after retracing about 0.25km, turn left through a gate just below a pylon. Walk N to just beyond the pylon and turn right here onto a path which leads E through the trees to eventually meet a wide track with a signposted route. Follow this track E and then round N, as it follows the line of the Tummel and then the Garry, for some distance to overlook a field as the track turns W. Turn right off the track here to follow a signed path N down past a gate to immediately turn right and follow the path downhill E beside a fence to turn down and cross a bridge over a burn. Follow the path NNE uphill and then alongside a fence to re-join your starting point just below the road bridge over the River Garry. Refreshments are available at the café beside the Killiecrankie Visitor Centre-see <https://www.nts.org.uk/visit/places/killiecrankie/planning-your-visit> - or in Pitlochry.

## 11.2. Killiecrankie-Craig Fonvuick-Killiecrankie Pass Circular

CPPM 11 OS 43 PP In the car park at the National Trust Visitors Centre (fee payable by non-members) on the minor road at the N end of the Pass of Killiecrankie.

11.2. Killiecrankie-Craig Fonvuick-Killiecrankie Pass Circular



*The view to Ben Vrackie from the Craig Fonvuick path*

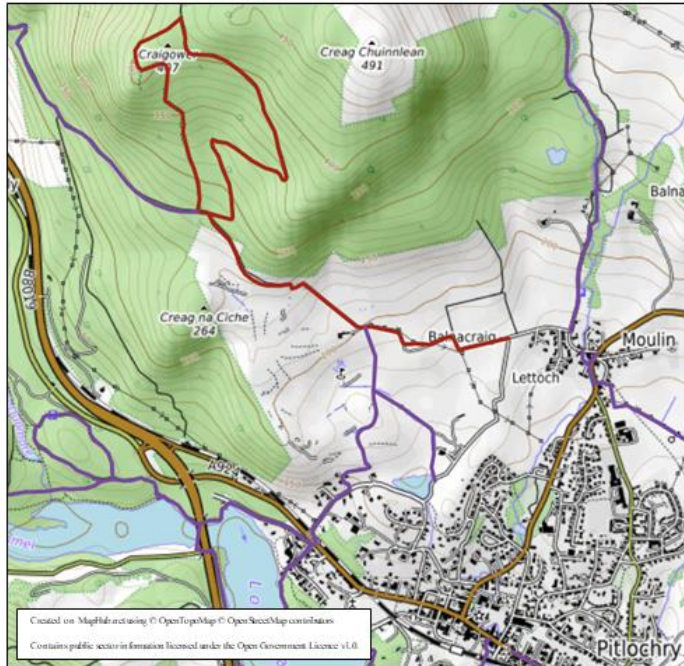
From the car park walk N past the river side of the Visitor Centre to follow the path (KCKI/101) round to join the minor road. Walk N along the minor road past some houses to turn sharp left over the road bridge over the River Garry and walk up the road to the sharp corner. Bear right here along past Balrobbie Farm on KCKI/122 into a field. A short distance along the side of the field take the signed path (KCKI/122) SW into the woods and up the hillside. The path emerges from the woods to head SE uphill to eventually reach the crest on the open hillside. A narrow path left takes you to the summit of Craig Fonvuick. Returning to KCKI/122 continue SE, now downhill, to re-enter woods and turn NE down the steep slopes to enter a field through a gap in the wall. Take the path across the field to reach the minor road at a gate. Turn right to take the minor road all the way down to the car park on the B8019 by the road bridge over the River Garry. From the car park take the signed steps down the N side of the road bridge to the signposted tracks. Bear left to follow the track (KCKI/50) N down to the footbridge over the River Garry. Cross the footbridge to turn left and follow the path (KCKI/50) through the Pass of Killiecrankie all the way along to reach the minor road (diverting left just before this to visit the Soldier's Leap viewpoint). Retrace your steps to the car park.

Note: - (1) For a shorter walk the ascent of Craig Fonvuick can be omitted by staying on the minor road and following this uphill then down the other side to reach the car park on the B8019. Then follow the guidance above back to the Killiecrankie Visitor Centre. Refreshments are available at the café beside the Killiecrankie Visitor Centre-see <https://www.nts.org.uk/visit/places/killiecrankie/planning-your-visit> or in Pitlochry.

### 11.3. Moulin to Craigower Circular

CPPM 11 OS 43, 52 PP In the car park by the church in Moulin or in Pitlochry. (The road to Moulin is signposted half-way along Pitlochry High Street.)

11.3. Moulin to Craigower Circular



Walk across the road to take the side road behind the hotel and follow it round and W (PLRY/1) past Balnacraig. Bear right to follow the path uphill (PLRY/66) to follow the edge of the woods then enter the woods. Bear right to take the path (PLRY/33) steeply uphill to reach the summit of Craigower Hill. Continue N beyond the summit to take the track along the hillside then round past the towers to turn SE through the woods (PLRY/33) and zig-zag downhill to return to the edge of the golf course and retrace your steps.

Refreshments are available at the Hotel (Pub) in Moulin (<https://www.moulinhotel.co.uk>) or in Pitlochry.



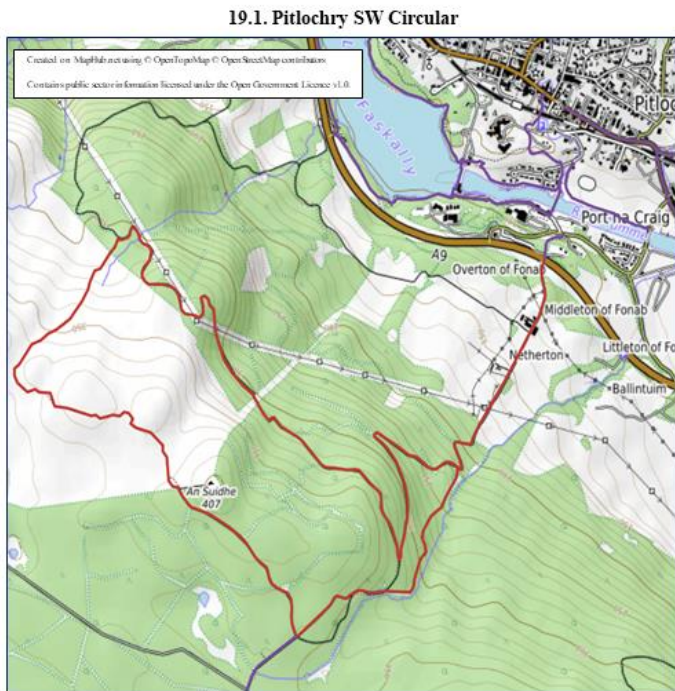
*The view to Loch Tummel from Craigower Hill*



There are many very popular walks around Pitlochry including the steep hill Ben Vrackie, walks on the banks of the Rivers Tummel and Garry, and on the banks of Loch Faskally. One example of a longer walk is given. Refreshments are available at the Theatre and in Grandtully

## 19.1. Pitlochry SW Circular

CPPM 19 OS 52 PP At the Pitlochry Festival Theatre car park or in Pitlochry (cross the river via the footbridge to reach the Pitlochry Festival Theatre). If it is preferred to avoid crossing the A9 then limited parking on rough ground at the start of the minor road on the S side of the A9 may be possible.



*The Stone Circle on Carra Beag Hill, Pitlochry*

Walk back out of the car park to the minor road to follow the signposted route (PLRY/6) SW up to the A9. Cross the A9 with great care (extremely dangerous) to take the minor road uphill (PLRY/6) SW, and then the forestry track, for about 2km to turn sharp right at the top of the hill, as signed. (Note: - a short diversion further SW here on PLRY/6 will allow you to view the stone circle on the right). Walk NW on the forestry track (PLRY/107) to the edge of the forest. Pass through the gate and walk across the boggy, heather covered, open hillside on a narrow path (vague in places) to turn sharp right just before Creag a' Choire and follow the path NE downhill to re-enter the forest to join another forestry track. Turn right here to follow the path SE (note: - the route finding can be a bit tricky here because of forestry works and fallen trees and debris but generally follow the direction of the pylons uphill) to reach the forestry track at the top of the hill. Follow the forestry track (PLRY/107) SE for some distance to then turn sharp left downhill and round to re-join PLRY/6. Retrace your steps to the car park.

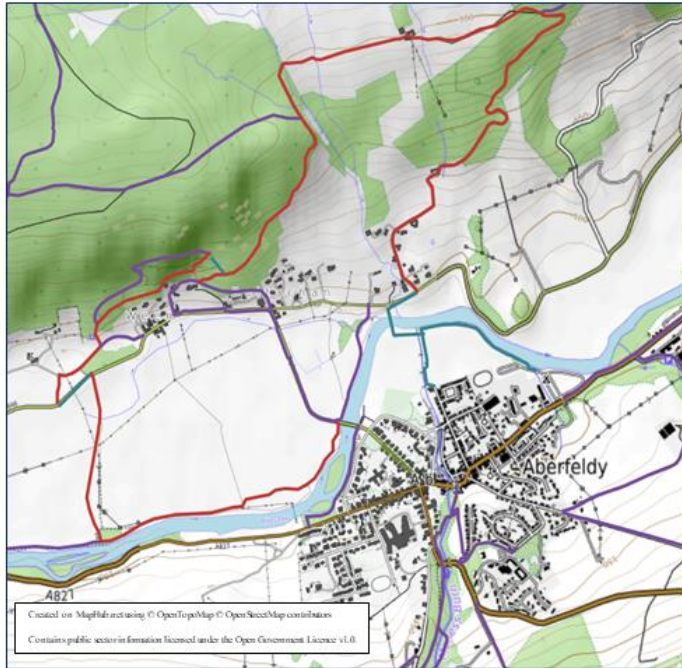
Note: - (1) Continuing SW on PLRY/6 and MASG/6 to Grandtully gives a longer walk. This route could also be started at Grandtully.

There are many possible walks between Aberfeldy and Kenmore including the long riverbank walk along the N bank of the River Tay. One example is given. Refreshments are available in Aberfeldy, Weem, and Kenmore.

## 23.1. Aberfeldy to Castle Menzies and Weem Circular

CPPM 23, 24 OS 52 PP In the centre of Aberfeldy.

23.1. Aberfeldy to Castle Menzies and Weem Circular



Walk through Aberfeldy to turn right onto the B846 at the crossroads and walk down the road to cross the River Tay at the road bridge. Turn immediately left after the road bridge to take the signed path down to the riverbank. Turn right to follow this path (DULL/145) for some distance to turn sharp right onto DULL/148 and follow this away from the river to reach the minor road. Cross the road and bear left then right to follow the track (DULL/150) into the woods, turning right shortly at the junction (the left-hand option leads to Castle Menzies) to go round to reach a car park and picnic spot. Take the path (DULL/152) steeply uphill at the NE corner of the car park. Follow this path as it winds along the hillside (past St David's well and the site of St Cuthbert's chapel-see <https://canmore.org.uk/site/25672>) and eventually descend steeply to join DULL/153. Turn left and follow DULL/153 along the hillside then round and uphill for some distance to enter a wood. Turn right along the track (DULL/159) past Glassie Farm. Continue for some distance along the hillside to a junction of tracks. Turn sharp right here to follow DULL/158 all the way down to the minor road. Turn right to walk along the road for a short distance to turn left off the road and follow the path down to the footbridge. Cross the footbridge to return to Aberfeldy.



*Cup-and-Ring marked rock on Weem Hill*

There are many possible walks in the Aberfeldy area. Variations on the following walks are well known.

## 24.1. Birks of Aberfeldy

CPPM 23, 24 OS 52 PP In the centre of Aberfeldy.



Walk up from the centre of Aberfeldy to the crossroads on the A827 and turn left up the A826 to the start of the walk. Follow the signed paths (ABFY/102, 103) to the top of the Birks (take great care-very steep in places and not for those with vertigo) to turn right onto AFDY/105. After about 1.5km turn right onto AFDY/106 to return to the starting point.



*Waterfall in the Birks of Aberfeldy*

## 24.2. Grandtully to Aberfeldy on the Old Railway Track

CPPM 24 OS 52 PP At the car park beside the old station up a narrow road on the left at the W edge of Grandtully.

Follow the signposted route W under the bridge and all the way to Aberfeldy (MASG/122, ABFY/115, 119). The path deviates right down to the riverside for the section near Aberfeldy then returns to join the road into Aberfeldy. Retrace your steps to the car park.

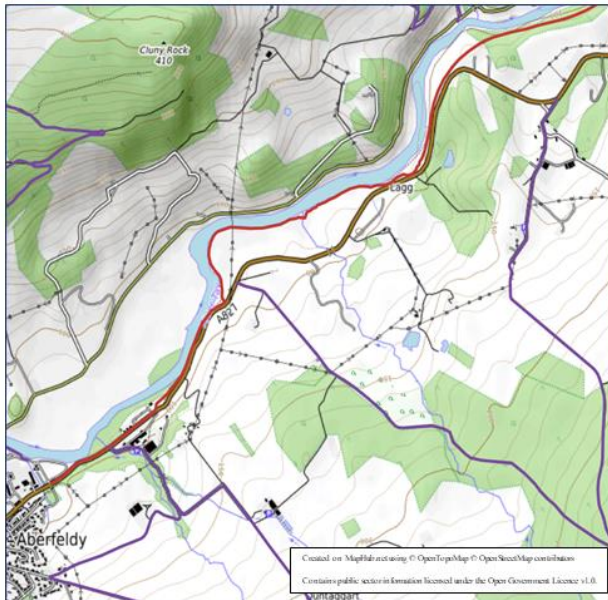
Note: - (1) An alternative return route is to cross the River Tay at Aberfeldy, either on the footbridge or on the road bridge, and turn right to follow the minor road all the way back ENE to Strathtay to turn right and cross the River Tay, at the road bridge, into Grandtully.

Refreshments are available in Aberfeldy or Grandtully (Hotel or Chocolatier). If Aberfeldy is not to be visited then Dewar's Distillery offers refreshments (summer only) and outside seating. See e. g. <https://www.dewars.com/gl/en/aberfeldydistillery> and <https://www.highlandchocolatier.com>

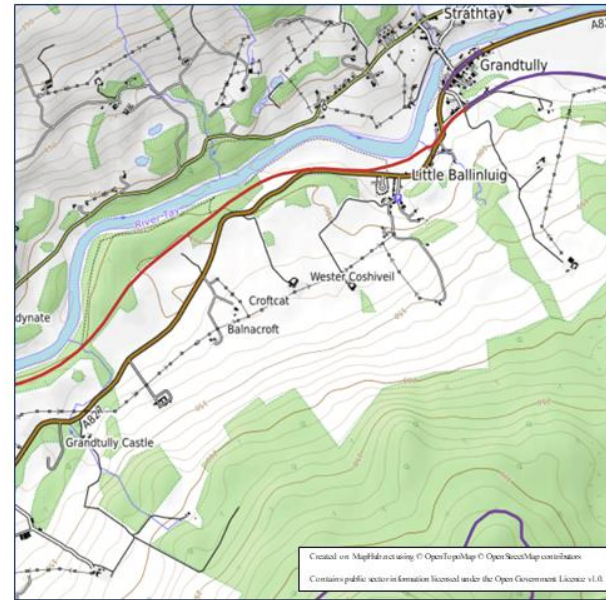


*The Old Railway track,  
Grandtully to Aberfeldy*

24.2. Grandtully to Aberfeldy on the Old Railway Track - West

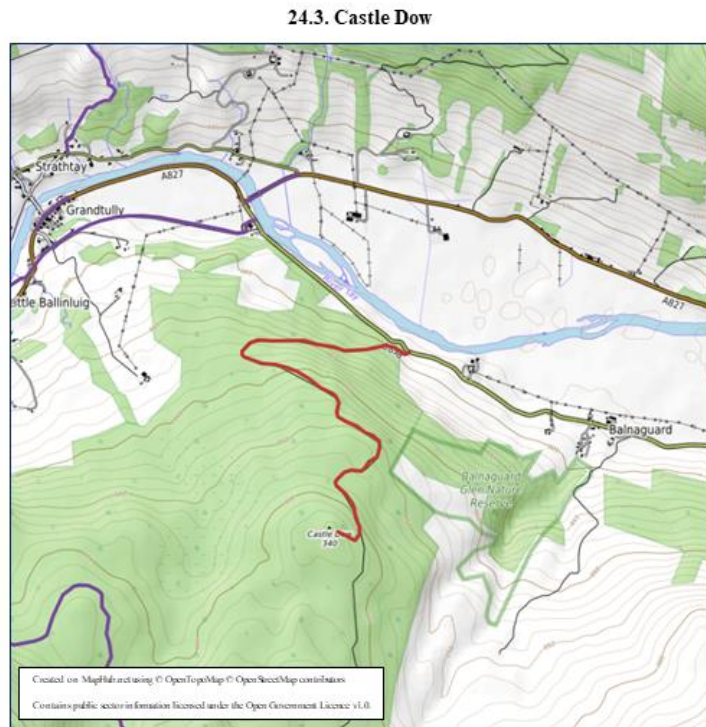


24.2. Grandtully to Aberfeldy on the Old Railway Track - East



### 24.3. Castle Dow

CPPM 24 OS 52 PP On rough ground at the start of the track (signed) off the minor road on the S of the River Tay half-way between the road bridge and Balnaguard.



Follow the forestry track (MASG/124) W initially then all the way round and steeply uphill for some distance to eventually reach a flat section. Turn sharp right at the signpost to follow a rough track uphill and round the edge of the forest to reach Castle Dow. Retrace your steps to the car park.

Refreshments are available in Grandtully at the Hotel or the Chocolatier

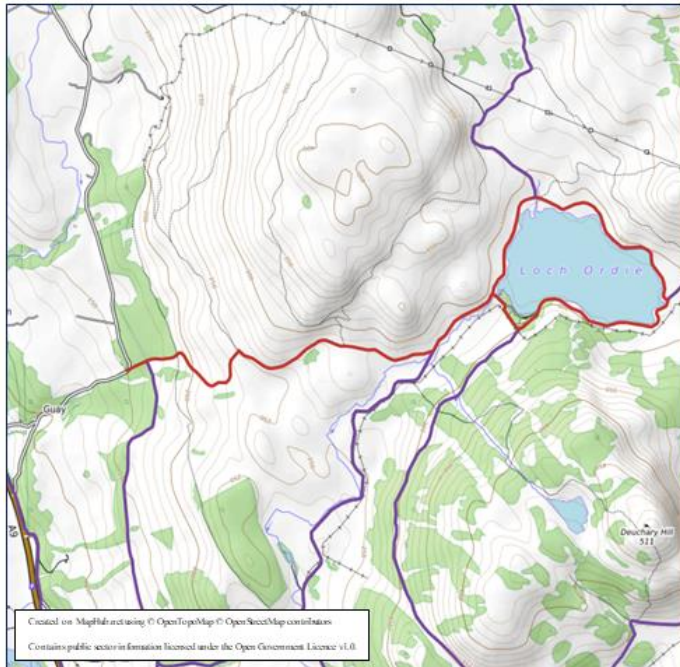


*The Cairns at the Summit of Castle Dow*

## 25.1. Loch Ordie from Guay

CPPM 25 OS 53 PP In the small parking area at the corner of the Guay to Tulliemet high-level minor road, just at the first sharp corner.

25.1. Loch Ordie from Guay



Walk uphill to cross a track and continue round and uphill on the track (DUNK/108) to reach a higher-level track. Turn right to follow this track (DUNK/108) round the hillside to join another track (DUNK/6) coming from the right and reach Loch Ordie. Complete the circuit of Loch Ordie and retrace your steps to the car park.

Note: - (1) There are number of possible “add-ons” to this walk. E. g to complete the circuit of Deuchary Hill on tracks DUNK/107, DUNK/125, and DUNK/106, or to ascend Deuchary Hill by turning right from DUNK/6 down DUNK/106 for a short distance to reach the starting point for the ascent of Deuchary Hill, or to return to the car park from Loch Ordie via DUNK/6, DUNK/109, and DUNK/138. Similarly, a longer return route is via DUNK/6, DUNK/26, DUNK/110, and DUNK138.

(2) Generally, there are a large number of good tracks (not core paths) in this area which allow for a range of different walks.



*Loch Ordie, looking E*

There are a number of possible walks around Alyth. One example is given here.

## 27.1. Den o' Alyth and Hill of Alyth

CPPM 27 OS 53 PP In the car park in Alyth.

27.1. Den of Alyth and Hill of Alyth



Walk WNW up the main street of Alyth to a Y-junction and take the left-hand option. Follow this minor road NNW for a short distance to follow the signed route into the Den o' Alyth. Follow the path network (ALTH/110, 118, 117, 115, 122) to its furthest extent. Continue NW on a vague path (not a core path) along the riverbank to eventually reach the minor road. Walk NE up the road to a junction. Take the right-hand option and after about 0.7 km take the signed path (ALTH/12) right, S, up the hillside. Bear left at the junction to follow the track (ALTH/2) to the summit ridge. Bear left here to follow the ridge (ALTH/2) to the Trig point. From the Trig point descend SE (ALTH/2) to reach a track. Turn right here to follow the track (ALTH/20) SSW all the way back into Alyth.



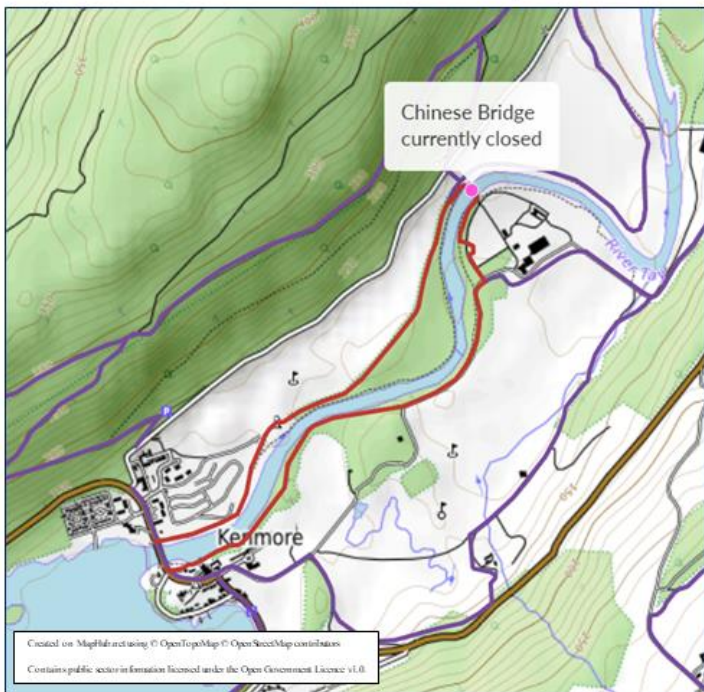
*In the Den o' Alyth*

Refreshments are available in Alyth e. g. "Café In the Square" and "Dirliebane".

There are many walks possible at Kenmore but these have not been walked. The possibilities include the banks of the River Tay and a circular walk from Kenmore via the Falls of Acharn. CPPM29, OS52 PP In Kenmore. Refreshments available in Kenmore.

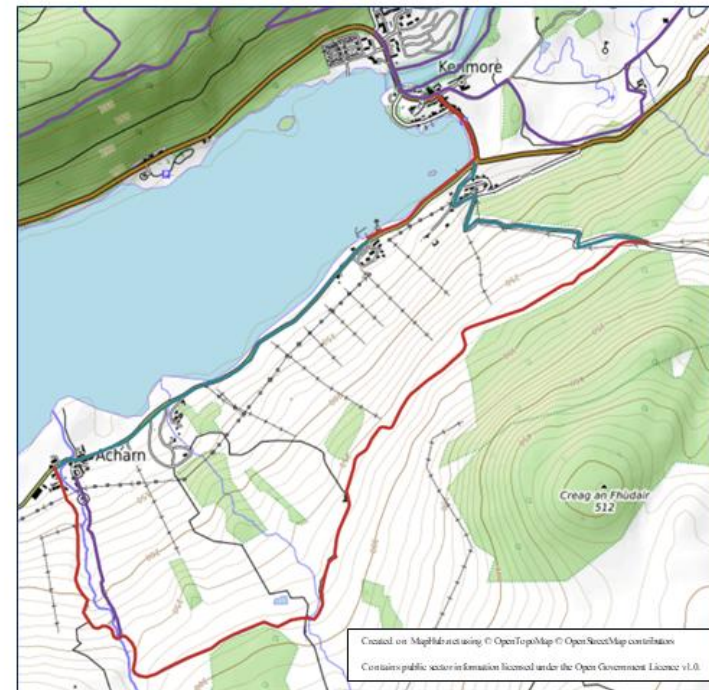
### 29.1. Kenmore-Banks of the River Tay

29.1. Kenmore-Banks of the River Tay



### 29.2. Kenmore-Falls of Acharn Circular

29.2. Kenmore-Falls of Acharn Circular

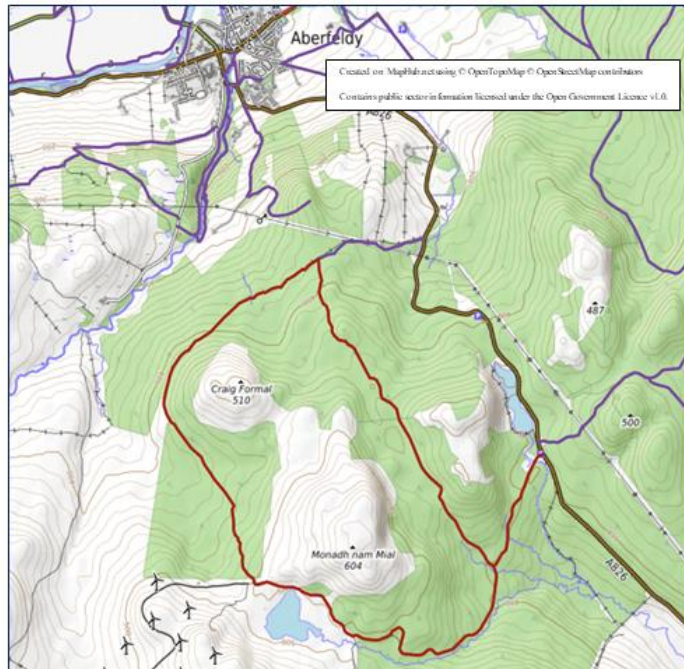




### 30.1. Forest Walk at Loch na Craige on the A826 about 5km south of Aberfeldy

CPPM 30 OS 52 PP In the parking area at the entrance to the forestry track, on the E side of the road, at the southern end of Loch na Craige.

30.1. Forest Walk at Loch na Craige on the A826 about 5km south of Aberfeldy



Cross the road to pass through the gate on the W side of the road and walk SW on a good track for about 1km to bear left at the junction. Follow AFDY/112 (not all walked) all the way round to join AFDY/113. Turn right here to follow AFDY/113 all the way back to the junction. Turn left here to return to the car park.



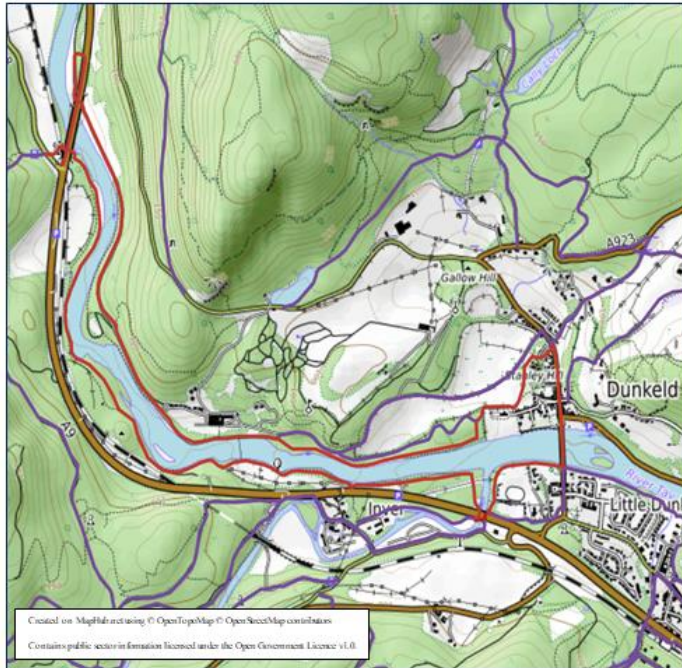
*Loch na Craige from the S*

There are very many walk options in Dunkeld, including the paths on the river banks. Only a few examples are given. See also walks 32.1 and 32.2.

### 31.1. River Tay Circular from Dunkeld

CPPM 31 OS 52 PP In the car park (toilets available) at the N end of Dunkeld. (Other car parks are also available.)

31.1. River Tay Circular from Dunkeld



From Dunkeld cross S (DUNK/144) over the E pavement on the bridge over the River Tay and at the far side take the steps down from the E side of the bridge to reach the banks of the Tay. Turn left here to follow the path (DUNK/10) round on the banks of the Tay and then on the banks of the River Braan. Follow the path S under the A9 and then immediately right to cross the River Braan by the footbridge. Turn right off the

footbridge to follow the path (DUNK/23) towards the Tay. Follow this path as it turns W along the Tay and continue on this path all the way (passing Neil Gow's tree) to the bridge taking the A9 over the Tay. (For a short cut leave the path here to climb up the left embankment to the road bridge. Turn right to cross the bridge on the E pavement then right to descend the embankment to the path by the Tay). Continue under the bridge to reach the minor road (B898). Turn left to reach the A9 and left again to cross the bridge N on the W pavement (DUNK/100). Bear left to take the path (DUNK/145) back down to the Tay and follow this round under the bridge then SE along the banks of the Tay. Then follow DUNK/23 all the way back to Dunkeld Cathedral. Follow the path (DUNK/25) as it skirts N round the grounds of the Cathedral to reach the car park.



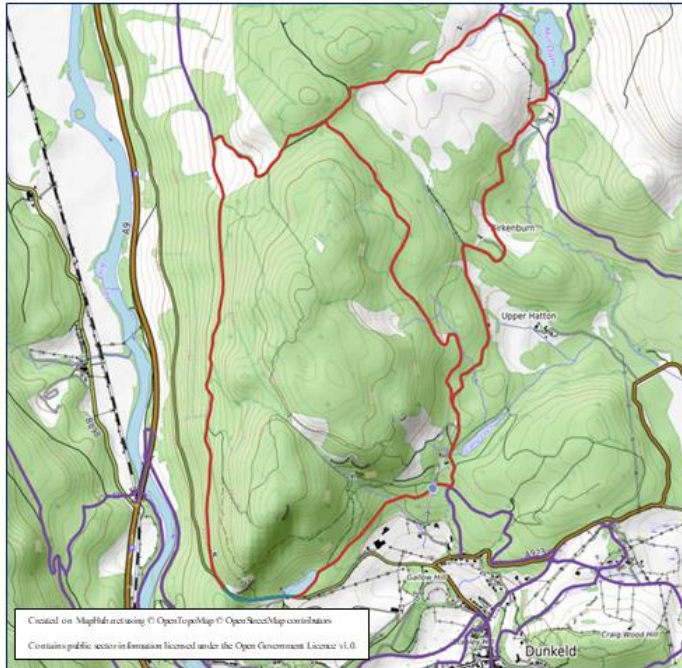
*A shelter on the N banks of the Tay*

Refreshments are available in Dunkeld and Birnam. Dunkeld has many historical associations see- <https://www.historicdunkeld.org.uk>

## 31.2. The Glack Circular from the Cally Forest Car Park, Dunkeld

CPPM 25, 31, 32 OS 52 PP In the Cally Forest car park on the left a short distance up the signed, very rough, forest track (DUNK/6) from the A923. Alternatively, park in Dunkeld and walk N along the A923 and just round the sharp corner from the junction with the minor road turn left up the signed forest track)

31.2. The Glack Circular from the Cally Forest Car Park, Dunkeld



Return to the forest track from the car park and turn left N up the track (DUNK/6) past Cally Loch (a track-DUNK/112-heading off N on the left here gives a shorter route either avoiding The Glack lochan or giving a shorter circuit via The Glack lochan). Continue on this track all the way to the Glack lochan (Note 1) and along the W side of the lochan. A short distance past the top of the lochan turn left (Note 2) onto DUNK/25 and follow the track WSW all the way into the forest (not far into the forest the track DUNK/112 joins from the left). Continue on DUNK/25 WSW to leave the forest and go downhill to reach another track heading S (DUNK/26). Turn left onto this track and follow it for some distance all the way to reach a minor road (dangerous). (To avoid the road, take an unsigned track part way down DUNK/26 and follow this over rough and very steep ground round the hillside to eventually join DUNK/68.) Follow the minor road SE round the corner to shortly reached the signed entrance to another forest track at Polney Loch. Turn left off the road to follow the track (DUNK/68) on the S side of Polney Loch all the way NE back to the Cally Forest car park.

Notes: - (1) There is an option here to take the track (DUNK/125) on the E side of the lochan to join DUNK/106 and follow it all the way to Loch Ordie or, part way along, to turn right up the ascent path for Deuchary Hill. This makes for a much longer walk. (2) There is an option

here to continue N on DUNK/6 to Loch Ordie or, part way along, to turn right up the ascent path for Deuchary Hill. This makes for a much longer walk.

Refreshments are available in Dunkeld and Birnam. Dunkeld and Birnam have many historical associations see- <https://www.historicdunkeld.org.uk>



*Blue Damselfly at Polney Loch*

### 31.3. Dunkeld-Loch of the Lowes Circular

CPPM 31, 32 OS 52 PP In the car park (toilets available) at the N end of Dunkeld. (Other car parks are also available.)

31.3. Dunkeld-Loch of the Lowes Circular



Walk back S into Dunkeld to, just before the hotel on the left. take the minor road on the left, E, steeply uphill and follow it for about 0.7 km to turn left up the signed track (DUNK/3) and then a path to eventually reach, at the edge of the woods, a Y junction of signed tracks. Continue straight ahead (NE) on DUNK/3 down to reach a minor road. Cross the road to enter the woods by the banks of the Loch of the Lowes and turn left along the path (DUNK/131) to reach the Visitors Centre. Retrace your steps to the Y junction at the edge of the woods and take the right fork (DUNK/52) all the way to the golf course. Follow the sign, pointing right, up to the car park and take the driveway W out of the golf course to reach the A923. Bear left here to follow the track/minor road (DUNK/136) steeply down the hill to cross the A923 into the car park.



*Nesting Osprey at Loch of the Lowes*

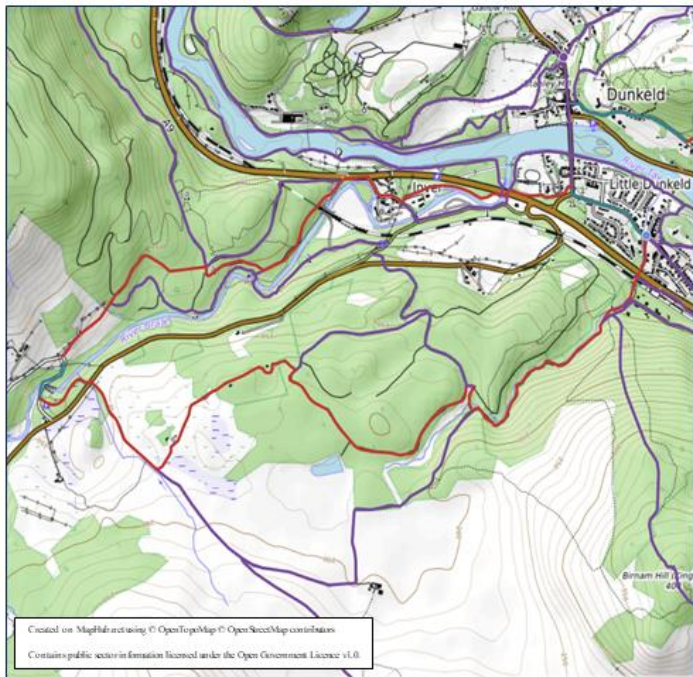
Loch of the Lowes is, of course, famous for Osprey viewing and conservation see [scottishwildlifetrust.org.uk/reserve/loch-of-the-Lowes/](http://scottishwildlifetrust.org.uk/reserve/loch-of-the-Lowes/)

Refreshments are available in Dunkeld and Birnam and basic refreshments, picnic tables, and toilets are available at the Loch of the Lowes Visitor Centre.

## 32.1. Inchewan Burn-Rumbling Bridge-Hermitage Circular from Birnam

CPPM 31, 32 OS 52 or 53 PP In the car park at the Birnam Arts Centre or on the streets.

32.1. Inchewan Burn-Rumbling Bridge-Hermitage Circular from Birnam



Walk through the Beatrix Potter Garden behind the Birnam Arts Centre to reach a minor road alongside the Inchewan Burn. Turn left up this road to pass under the A9 and the railway and then follow the track (DUNK/24) ahead, alongside the Inchewan Burn, for about 1km to reach a junction of tracks. Turn right here to cross the burn and shortly reach another track (DUNK/67). Turn left onto this track and follow it SW then round NW (a short diversion left here leads along a track to a small lochan) to eventually reach (just round a sharp corner) a junction with a path on the left, just opposite a signpost. Turn left off the track onto the path (DUNK/61) and follow it WSW through the woods, then on a track over open ground, for about 1km, to reach a T-junction. Turn right here onto the track (DUNK/7) and follow it NW to reach the A822. Cross the road and enter the woods to follow a path WSW to meet a minor road by a car park and the River Braan (walk left down to the River Braan for a picnic spot). Turn right down the minor road to cross Rumbling Bridge and follow the road uphill to a corner. Turn right off the road here at the signpost to follow a track (DUNK/65) NE for about 0.5 km just into the forest to turn right onto another path (DUNK/64) and follow it as it winds all the way downhill then alongside the River Braan, and past the Hermitage, to reach the A9. Just before the A9 take the signed path right, alongside the A9, to turn right onto the road through the village of Inver. Just before the bridge here over the River Braan follow the path left, near the A9, down to reach a footbridge. Cross the footbridge and turn left under the A9. Immediately bear right to follow the path, then a road, parallel to the A9 to reach the A923. Cross the A923 and walk back along the road through Birnam to the car park.



*The falls on the River Braan at the Hermitage*

Refreshments are available at the Birnam Arts Centre (<https://www.birnamarts.com>), at the café across the road, at the hotel, or at the tearoom at the Post Office.

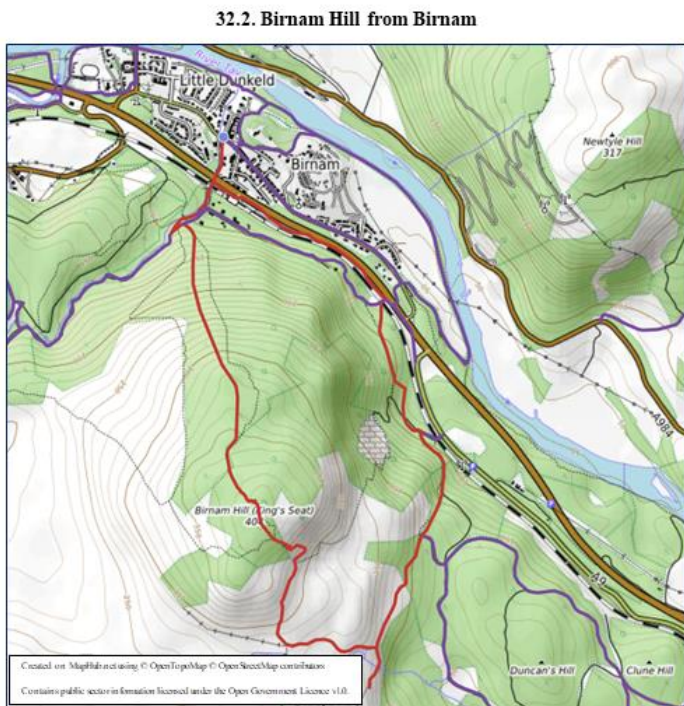
## 32.2. Birnam Hill from Birnam

CPPM 32, 39 OS 52 or 53 PP In the car park at the Birnam Arts Centre or on the streets.

Walk through the Beatrix Potter Garden behind the Birnam Arts Centre to reach a minor road alongside the Inchewan Burn. Turn left up this road to pass under the A9 and the railway and then follow the signed path on the left (not the track beside the Inchewan Burn) SW for a short distance to a signpost and turn left (DUNK/11) to go very steeply uphill all the way to the summit plateau on Birnam Hill (part way up there is a viewpoint over Dunkeld from a rock on the left).

Follow the path across the plateau to ascend the slippery summit rock outcrop and reach the cairn.

Return to the rocky outcrop and head SE across the plateau on the path (DUNK/14) to then descend steeply on some steps and follow the path as it turns right and subsequently left downhill (part way down a signpost points right -DUNK/72-to the viewpoint at Stair Bridge with good views over Duncan's Hill to Macbeth's Castle in the far distance). Continue downhill on DUNK/14 to near the B867 then continue left (N) through the woods on DUNK/69 to reach a road by some houses and then your starting track. Turn right under the railway and the A9 to return to the car park.

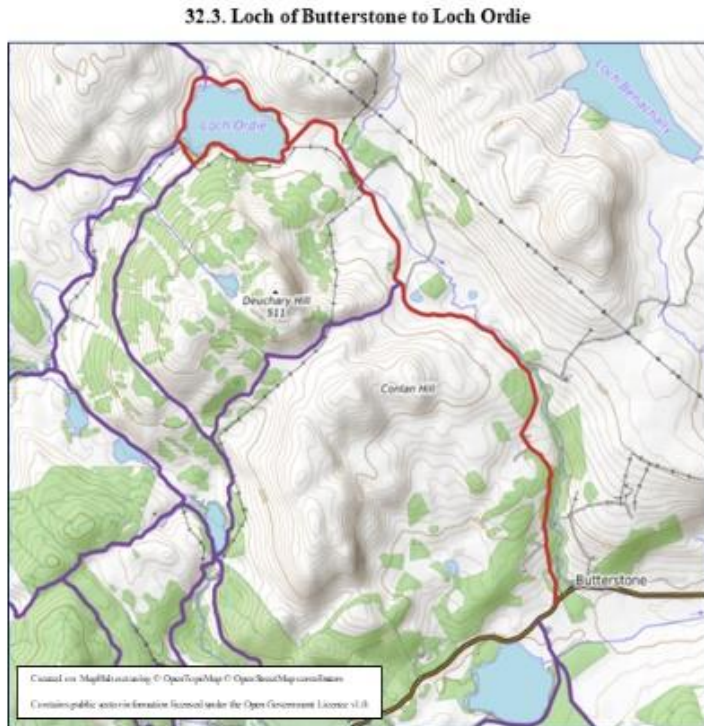


*The summit cairn on Birnam Hill*

Dunkeld and Birnam have many historical associations see-  
<https://www.historicdunkeld.org.uk>

### 32.3. Loch of Butterstone to Loch Ordie

CPPM 26, 32 OS 52 or 53 PP Either at Butterstone (very limited parking) or in the small car park at the E end of the Loch of Butterstone.



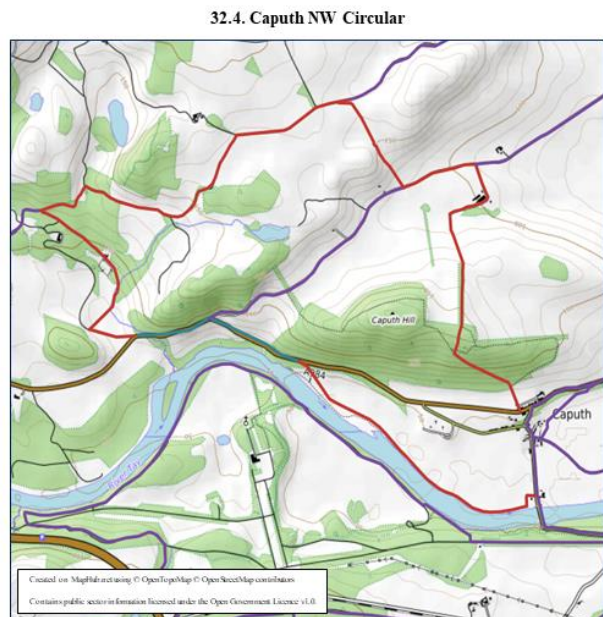
If parking at the Loch of Butterstone walk back from the car park (DUNK/121) to the A923 (dangerous road) to turn right along the road for a short distance and then left off the road up a minor road (DUNK/123) and follow this all the way steeply uphill to a Y junction at the bridge over the Buckney Burn. Take the left fork and follow the track (DUNK/123 then DUNK/107) as it winds round all the way to Loch Ordie (as an option complete the circuit of Loch Ordie on DUNK/135). Retrace your steps to the car park.



*Deuchary Hill from the track to the SE*

## 32.4. Caputh NW Circular

CPPM 32 OS 53 PP In the small car park on the right, beside the houses, as you enter Caputh from the S.



Turn right out of the car park to walk up the hill to the junction with the A984 (dangerous road). Turn left here to walk along to the church to cross the road and take the signed track (SPIT/130), between the buildings, into a field. Cross the field on the track to enter the woods and follow the signed track to the left up the hill and through the woods for about 0.5km. A sign here points right off the track. However, to avoid the awkward undergrowth walk a bit further up the track to a junction of tracks at the top of the hill. Turn right (E) along this track for about 0.25km to turn sharp left at the signpost and follow a path/track (SPIT/130) N through a narrow section of deciduous woodland, then through two gates to turn right and reach the farm complex of Stralochy. Walk through the farmyard and turn left to shortly reach another track (running WSW to ENE). Turn left here to follow the track (SPIT/124) for about 0.25km to turn right at another sign and follow another track (SPIT/125) uphill beside a wood to reach a gate at the top of the hill. Pass through the gate and cross the field to reach a fence. Turn left at the arrow to follow the fence for a short distance to cross a stile at a signpost onto another track. Turn left (Note 1) to follow this track (SPIT/126) to a junction (for East Cult). Take the left branch here (now a road) to reach another



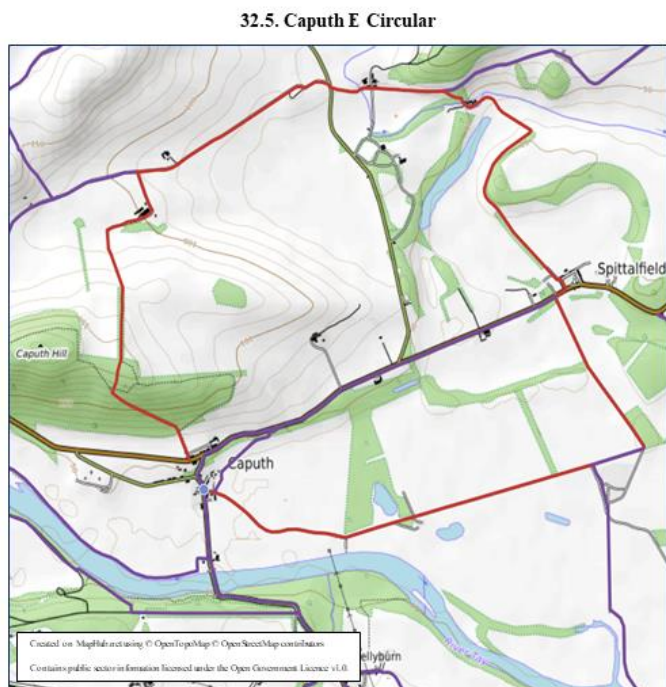
*The track junction, looking W,  
near Stralochy Farm*

junction (for Dunmore Farm) and take the left branch downhill to pass Mill of Muckly. Continue on the horizontal road to descend for a short distance and pass round a badly eroded bend with a repaired section of road and then downhill to reach a Y-junction at Dungarthill. Turn left here to follow the signposted route (SPIT/128) down the road and round to reach a junction with the road giving the main access to Dungarthill. Turn left here to shortly reach the A984 (busy road). Walk E along the A984, with care, for about 1 km to turn right off the road and pass through a gate to take the signed track (SPIT/151) down to the River Tay. Walk ESE along the Tay bank to just before the Tay bridge and turn left and then right to follow the track to reach the B9099 at a signpost. Turn left here to follow the pavement back to the car park. Note: - (1) There is the option here to follow the route via Spittalfield described in 32.5 below. Turn right and follow the track (SPIT/126) ENE down to the minor road. Turn right to go down the minor road to, after about 1 km, reach a junction of tracks. Turn left to join the route described in 32.5



## 32.5. Caputh E Circular

CPPM 32, 39 OS 53 PP In the small car park on the right, beside the houses, as you enter Caputh from the S.



*Looking back to Millhole from the junction of tracks*

Turn right out of the car park to walk up the hill to the junction with the A984 (dangerous road). Turn left here to walk along to the church to cross the road and take the signed track (SPIT/130) into a field. Cross the field on the track to enter the woods and follow the signed track to the left up the hill and through the woods for about 0.5km. A sign here points right off the track. However, to avoid the awkward undergrowth walk a bit further up the track to a junction of tracks at the top of the hill. Turn right (E) along this track for about 0.25km to turn sharp left at the sign and follow a path/track (SPIT/130) N through a narrow section of deciduous woodland, then over two gates to turn right and reach the farm complex of Strathlochry. Walk through the farmyard and turned left to shortly reach another track (running WSW to ENE). Turn right here to follow the track (SPIT/124) ENE to reach the minor road just past Mains of Fordie. Cross the road and follow the signed track E past Culthill to reach a Y junction. Take the right branch here to follow the track (SPIT/121) down past Millhole to cross a burn and continue to follow the track to shortly reach another junction of tracks. Turn right here to follow the track round the edge of a narrow wood, then past a wooded arena on the left, and down to reach the houses and the square in Spittalfield on the A984. Cross the road and turn right to shortly, at the end of a row of houses, turn left down a track (SPIT/139)

(unsigned) to Easter Caputh Farm. Just before the farm turn right as signed to follow the track (SPIT/139) for some distance all the way back to Caputh and the car park. Refreshments are available at the “Walkin’ Café” at Spittalfield-see <https://www.facebook.com/walkincafespittalfield>.

There are many options for circular walks around Blairgowrie and Rattray. Only a few of the longer walks are described. Refreshments are available in Blairgowrie.

### 33.1. Knockie Path & Ardblair Trail, Blairgowrie

CPPM 27, 33 OS 53 PP In Blairgowrie at the Riverside Car Park on the West bank of the River Ericht on the N side of the road bridge carrying the A93 (turn left just before the traffic lights to reach the car park).

33.1. Knockie Path & Ardblair Trail, Blairgowrie

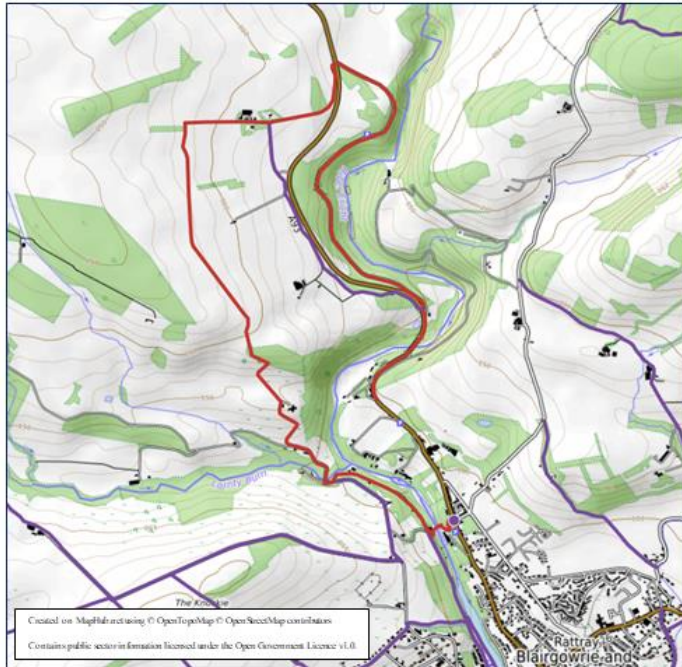


Follow the W bank of the River Ericht NW (BLAI/1) to ascend a series of steps and continue NW on the signposted track towards Lornty. Just before the road bridge at Lornty turn sharp left, as signposted, to follow the minor road uphill for about 0.5km to reach a Y junction. Turn sharp right here to take the signposted track (BLAI/9) NW, gradually ascending, to reach, after just over 1 km, a signposted turn left into a field and follow an old track (BLAI/9) SE to the shallow summit of Knockie Hill and then descend SE on an old road towards Blairgowrie. After about 1 km turn left and then sharp right, past Newton Castle, to head SE down a tarmac road (BLAI/117). After about 0.25km turn sharp right to follow the signposted track (BLAI/31) SW on the Ardblair Trail. After about 0.5 km this track turns sharp SE to reach the A923. Turn right to follow the pavement for about 0.25km to cross the road and take the signposted track (BLAI/136) past Myreside Farm. Follow this round for almost 0.5km to reach a Y junction with a track coming from Ardblair Castle. Turn left along this track (BLAI/27) and follow it to reach the B947. Cross the road and continue SE on the signposted track (BLAI/13) by the edge of a wood for just over 0.25km to turn sharp left to take the signposted track (BLAI/29) through the woods. Continue on this track across a field to reach the A93. Cross the road and take the signposted track (BLAI/21) along past the school. Shortly turn sharp left (BLAI/143) then right to reach the A923. Turn left to follow this road back into Blairgowrie and thence to the car park.

### 33.2. Old Military Road, Blairgowrie

CPPM 27, 33 OS 53 PP In the car park, beside the River Ericht, in Rattray, on the Glenshee Road, opposite the signed entrance to Drimmie Road.

33.2. Old Military Road, Blairgowrie



Walk down to the river Ericht on the signed path (BLAI/106) to cross at the bridge and turn right, N, onto the track (BLAI/1) to Lornty. Cross the bridge over the Lornty Burn at Lornty to take the Old Military Road N (BLAI/110), taking the signed (small yellow arrow) tarmac road on the right, NW, up the hill, at the junction. Continue up the hill to bear left at the house and continue to the end of the tarmac road and then on a track MTBL/115. Pass through a small defile between two woods to enter more level and open country. Continue on the track, in a more northerly direction, for some distance to reach the junction with the track leading E to Middle Mause Farm. Turn right (signed by a small yellow arrow) to take the track (MTBL/115) downhill, E, to this farm. Follow the track just past the farm to a signed junction. Bear left to continue on the track (MTBL/156) and follow it round and down, N, to reach the A93. Cross this road to take the signed road (the old A93) (MTBL/157) SE down towards the River Ericht. Follow this road round and down, parallel to but above the Ericht, for some distance to join the new A93 at the road bridge over the River Ericht. Cross the road bridge and follow the road (dangerous traffic), initially on a pavement, but then on the road, down into Rattray to reach the car park. Note: - to avoid the road section retrace your steps once you reach the A93.



*The view SE from Middle Mause Farm to the Sidlaw Hills*

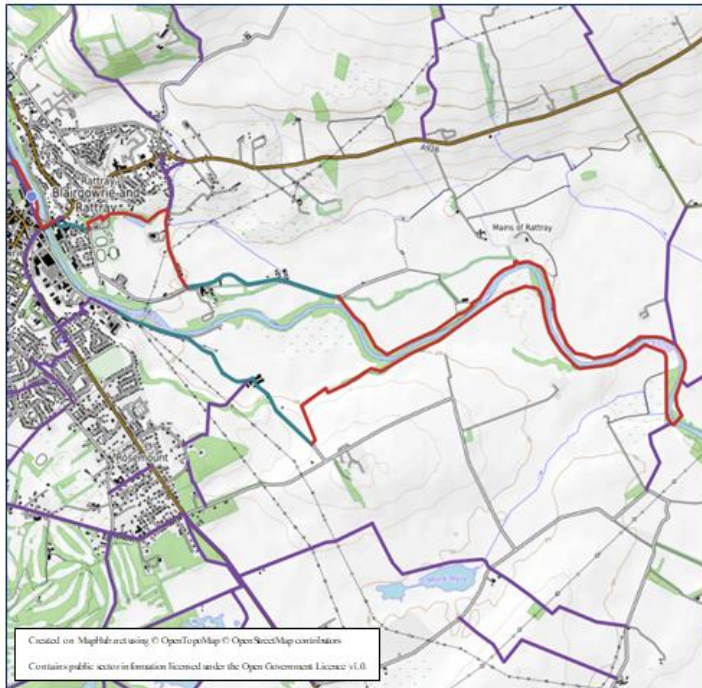
### 33.3. River Ericht, Blairgowrie

CPPM 33 OS 53 PP In Blairgowrie at the Riverside Car Park on the West bank of the Ericht on the N side of the road bridge carrying the A93 (turn left just before the traffic lights to reach the car park).



*The view N, of the River Ericht, from Kitty Swanson's bridge*

33.3. River Ericht, Blairgowrie

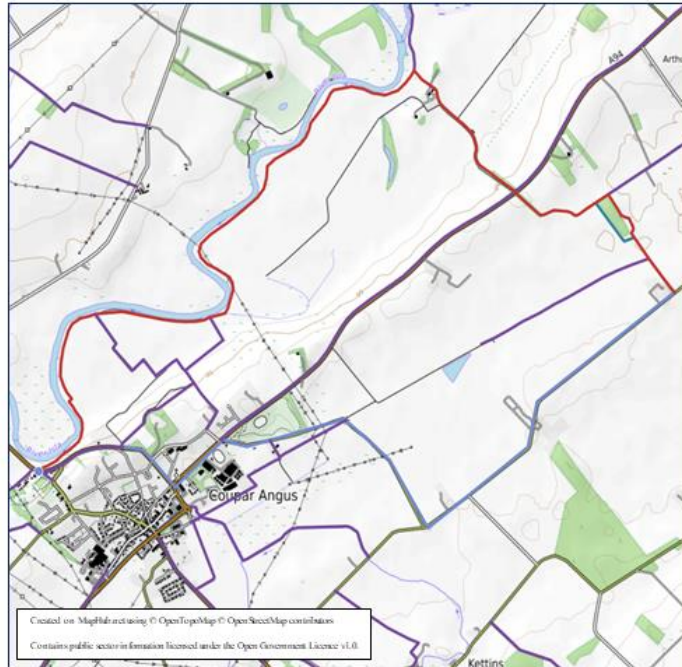


Walk SE (BLAI/105) down along the River Ericht to reach the A93 and turn left across the bridge over the Ericht. Cross the road and followed the signposted route SE to the recreation park. Turn right, as signposted, along the path through this park to join a B road and follow this down to meet the river and continue on this for some distance to just before West Mill Farm. Turn right off the road to take the signposted path (BLAI/102) along the river bank to eventually reach Kitty Swanson's Bridge (She ran the ferry here in the late 1800s). (Note: - the path along the riverbank takes several deviations and crosses some small wooden bridges to avoid sections of the bank that flood. The last section before Kitty Swanson's bridge follows the top of a small embankment.) Cross the bridge and turn N to follow the signed path (COUP/103) along the riverbank for a considerable distance to eventually reach a copse of pine woods where the signed path turns left and shortly sharp right to take the road to The Welton Farm. At The Welton Farm turn right to follow the B road back to Blairgowrie and thence to the car park.

### 33.4. River Isla and Coupar Angus E Circular

CPPM 33, 34 OS 53 PP In a very small, rough, lay-by on the W side of the A923 just N of Coupar Angus at Butterside Cottages and just opposite the sign for the riverside walk NE along the River Isla. Alternatively, park in Coupar Angus.

33.4. River Isla and Coupar Angus E Circular



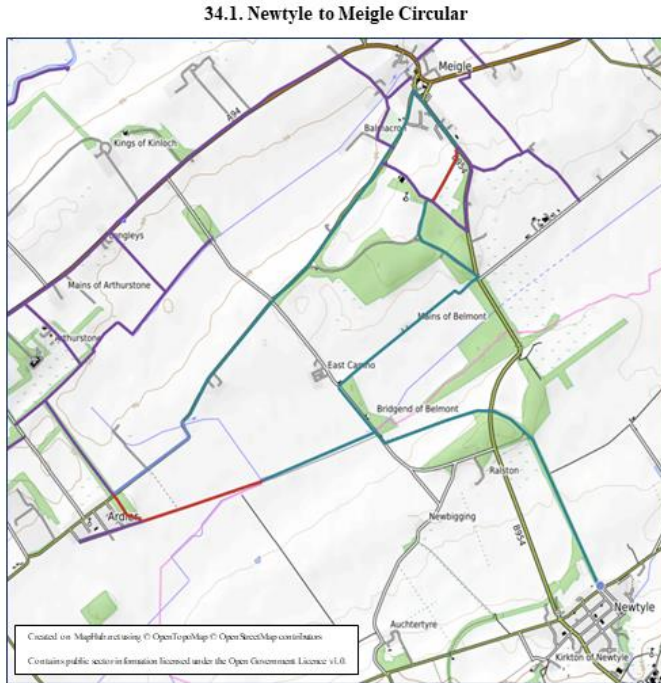
*The junction of the Rivers Ericht and Isla, looking N*

Cross the road and follow the signed path (COUP/102) along the riverside, generally on the embankment but sometimes by the river, (creeping thistle can be extensive here). At intervals pass two signposts pointing SE for tracks back to Coupar Angus. At the second of these make a short deviation off the path to go through a break in the barbed wire fence and climb a gate to get back on track (COUP/102). After about 4 km from the start of the walk turn right to take the track (COUP/113) SE past Balbrogie Farm to shortly join a road which leads to the A94. Cross the A94 (dangerous road) to take the track (COUP/114) SE to shortly round a bend and head ENE to reach a stand of trees with Scots Pine at the edge. There being no evidence, or signpost, for the core path (KTNS/121) along the E side of the wood, turn right to take the easier ground along the W side of the wood to reach a ditch. Turn left to traverse the S edge of the wood and then right to cross the ditch and reach a farm track (KTNS/121) heading to West Ardlar. Walk down this track to meet the minor road at West Alder. (Note: - the signed track to the right-KTNS/120-runs out and the subsequent old railway track is blocked by obstacles.) Turn right and follow this road SW for some distance to reach a T-junction near Flatfield. Continue SW here to reach another T-junction. Turn right here to follow the road NW to reach Victory Park in Coupar Angus. Cross Victory Park to reach the A94. Cross the road and turn left to follow the pavement into the town. Turn right at the roundabout to follow the A923 NW back to the car.

### 34.1. Newtyle to Meigle Circular

Although this walk starts in Angus this allows a good circular walk.

CPPM 34 OS 53 PP In the small signed car park, by the playing field, on the E outskirts of Newtyle on the LHS just off the A94.



*The view SE on the first part of the railway track by the old platform*

Walk NNW out of the car park onto the signed old railway track to follow this for some distance straight ahead then curving round to the left to reach a road. Walk down to cross the road and pick up the signed path on the other side to follow this round through a field and back onto the old railway track. Follow this track to the next road (S of East Camno) to descend and follow the signed path back onto the old railway track (MEGL/129) and continue to follow this WSW all the way to the village of Ardlar. Turn right here to follow the side road to reach the road to Meigle. Turn right here to follow the road all the way into Meigle pausing just past the crossroads, at the entrance to Belmont estate, to look over the wall on the right to view Macbeth's stone. Turn right in Meigle to walk SSE along the B954 for a short distance to find the Historic Scotland Museum of Pictish Stones (well worth a visit). Continue SSE along the B954 to turn right at the signpost into the grounds of Belmont Castle. Walk SSW through the field and cross the junction to continue SSW along the track to another junction. Turn left here to walk SE through the estate to the gatehouse and onto the B954. Turn sharp right here to follow the broad track (MEIGL/101) SW past Mains of Belmont to reach the minor road just S of East Camno. Turn

left here to follow the road SE for a short distance to the junction with the old railway track. Turn left to go back, as signed, onto the old railway track and retrace your steps to the car park.

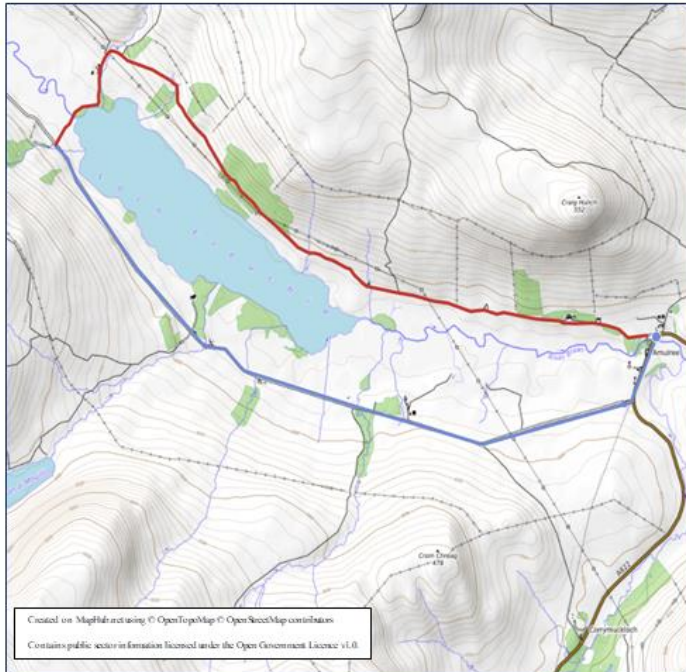
Refreshments are available in Meigle at the cafes or hotel e. g. see the Joinery Café/Restaurant <https://www.joinerycoffeeshop.com>

For the Meigle Pictish Stone Museum see; -<https://www.historicenvironment.scot/visit-a-place/places/meigle-sculptured-stone-museum/> For Macbeth's Stone see-<https://canmore.org.uk/site/30824/macbeths-stone-belmont>

## 37.1. Loch Freuchie Circular

CPPM 37 OS 52 PP At Amulree.

37.1. Loch Freuchie Circular

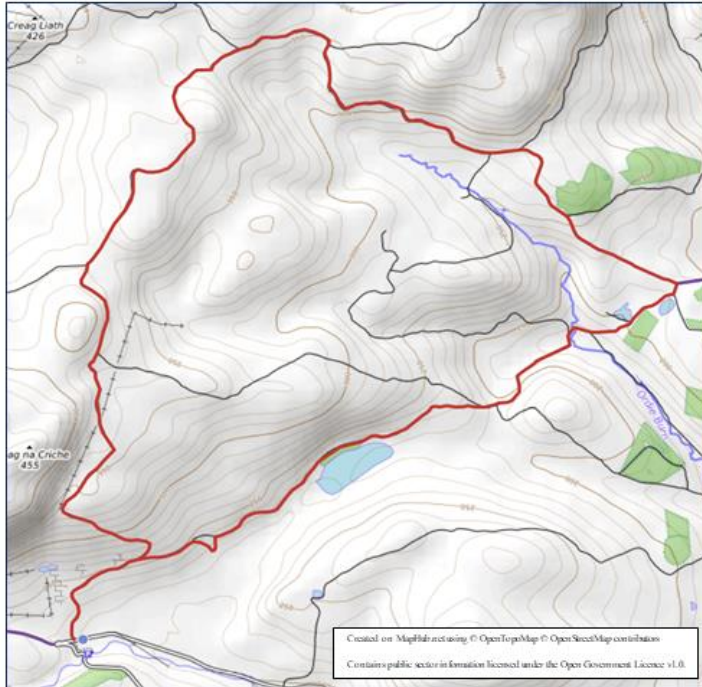


Walk over the bridge to turn left onto a track (DUNK/76, also part of the Rob Roy Way) and follow this, through various gates, along the loch side and round the head of the loch to reach the minor road. Turn right to follow the road back to Amulree.

## 38.1. Little Glenshee Circular

CPPM 38 OS 53 PP In the small car park beside the burn at the end of the minor road to Little Glenshee. This is a popular picnic spot so the car park can be very busy.

38.1. Little Glenshee Circular



Cross the burn by the footbridge at the E end of the car park and cross the road to take the track (AGVN/100) N then NE to a junction of tracks. Bear left (AGVN/121) towards Creag na Criche and follow the track as it winds around the hillside for some distance (noting, part way along, the Sack Stone down the hillside on your right), i.e. about 4km, until it turns E to reach a junction of tracks. The left-hand option gives a straightforward diversion NE to reach a path, on the right, to the obelisk and viewpoint on Craig Gibbon. Returning to the main track at the junction continue SE downhill to cross a fence via a steep and high style. Continue on the track (AGVN/121) round the forest, and then S, downhill, to turn sharp right, at the bottom, onto the track (AGVN/100) running WSW. Follow this track uphill and round to eventually cross another fence via a style just before Loch Tullybelton. Continue on this track back to your starting point.

Note: - (1) An adder has been seen on the track to the E of Loch Tullybelton.



*The Sack Stone*



### 39.1. Buffalo Hut and Stair Bridge, Birnam Hill

CPPM 39 OS 53 PP In a lay-by on the B867 on the LHS, going N, just past the turn-off for Murthly Sawmill.

39.1. Buffalo Hut and Stair Bridge, Birnam Hill



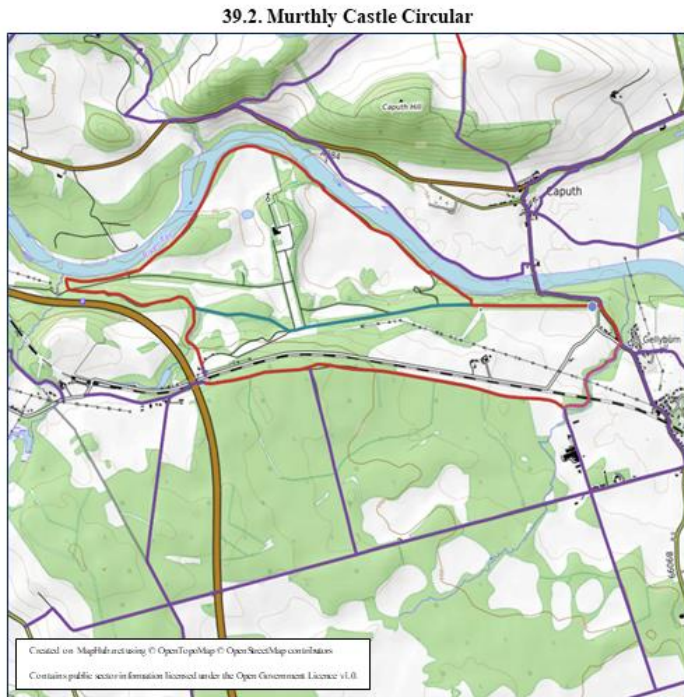
*The Buffalo Hut*

Walk N along the road (dangerous) for a short distance to turn left onto the forestry track (SPIT/105) by Bee Cottage. Follow this track, generally keeping to the right, then DUNK/102, all the way round past the Buffalo Hut (a small “house” on the slopes above the track) to reach a junction of tracks beneath the slopes of Birnam Hill. Turn right off the track to follow a path (DUNK/117) through shrubs for a short distance to reach another junction of tracks at a gate. Pass through the gate to turn left onto the signed route (DUNK/14) for Birnam Hill. Follow this up the hillside for some distance to reach a signposted junction. Turn left here to follow the sign for Stair Bridge (good views over Duncan’s Hill to the very distant Macbeth’s Castle on Dunsinane Hill). Cross the bridge and continue on a vague, broom covered, path through new forestry to reach a wide forestry track by a very small cairn. Turn left onto this track and follow it up and round the hillside to the summit. Continue on the track over the hill then steeply down and round the corner to follow the track ENE all the way to the vicinity of Rohallion Lodge. Bear right here to follow the track and then the avenue (SPIT/115) back to the B867 and turn left along the road for a short distance to the lay-by.

For the history of the Buffalo Hut see- [portal.historicenvironment.scot/designation/LB50775](http://portal.historicenvironment.scot/designation/LB50775)

## 39.2. Murthly Castle Circular

CPPM 39 OS 53 PP In the designated small car park, on the left of the main entrance to Murthly Castle grounds, on the side road just off the B9099.



Pass through the main entrance to Murthly Castle and walk down the long, tarmacked, drive (SPIT/109 initially) lined by trees to eventually reach the field giving a vista right, down to the castle. Continue for a short distance as the tarmac turns to an earthen track. There are two options here:

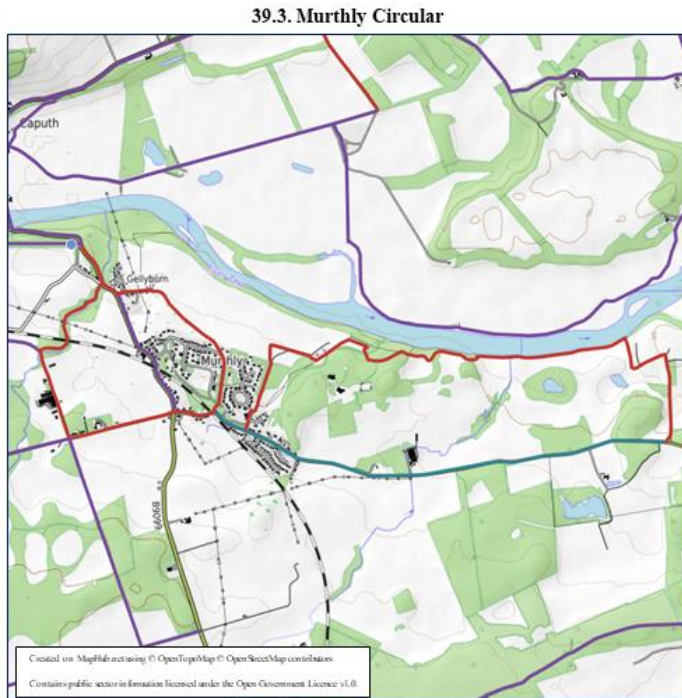
- Option (1) take the right junction, WNW, down through the woods onto SPIT/108 to then meet the track (SPIT/109) running parallel to the River Tay. Turn sharp right here to follow the signposted arrow E along this track and after a short distance take a track down to follow a vague path along the river bank and round the headland. This path eventually becomes impassable so climb up to re-join the track and follow this round the headland, ignoring other tracks going left and right, to turn away from the river and pass through an arch. Follow the track round as it turns full circle and pass over the arch to continue until the track joins the main tarmacked avenue. Turn left here to return to the car park. Option (2) take the left junction and walk up to join SPIT/108 near some buildings. Turn left onto SPIT/108 and follow this up to cross the minor road and the railway track (at the crossing point) to join SPIT/104. Turn left to follow SPIT/104 all the way E to just N of Douglasfield. At the junction take the left-hand option (SPIT/102) and follow this down to join the B9099. Turn left here to return to the car park. For Murthly Castle see: - [www.murthly-estate.com](http://www.murthly-estate.com)



*Giant trees line the main drive at Murthly Castle*

### 39.3. Murthly Circular

CPPM 39, 40 OS 53 PP In the designated small car park, on the left of the main entrance to Murthly Castle grounds, on the side road just off the B9099.



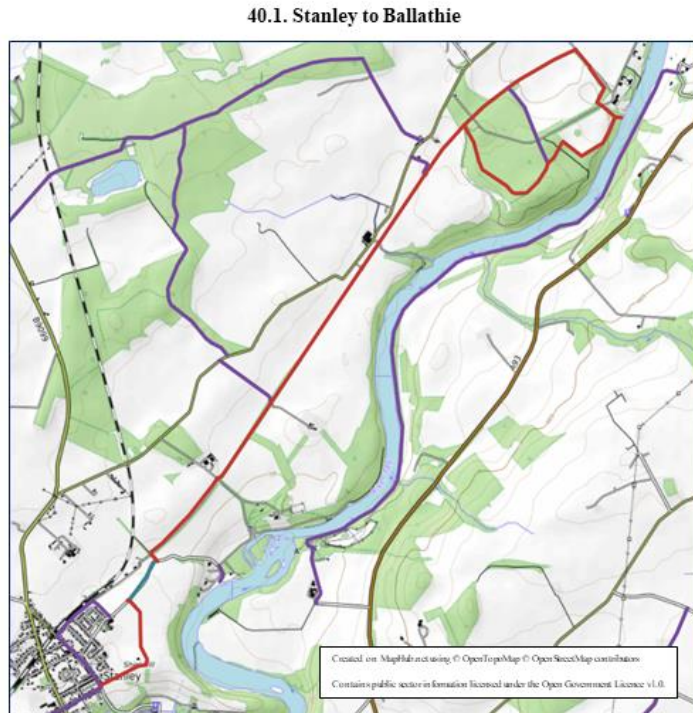
Walk back towards Murthly to turn left onto SPIT/110 by Broompark and follow this track round to where it is about to enter the housing area at Druids Park. (It used to be possible to take a short-cut here by continuing straight on, ESE, on another track to join SPIT/111 where it comes out of the housing area but the exit from this route is now blocked by an electric fence and a mound of soil). Continue on SPIT/110 S through the housing estate to reach a minor road. Turn left here to walk along the road for about 0.25km to turn left onto SPIT/111. Follow SPIT/111 NNE along the edge of the housing estate to continue E down past the sewage works and then through the woods and along the banks (STAN/112) of the Tay to near Kercock. Turn right here to follow STAN/112 up to reach the minor road. Turn right here and follow the minor road all the way to the crossroads at Murthly. Cross straight over to follow SPIT/101 to Bradyston. Turn right here to follow the track (SPIT/103) through Douglasfield Farm (Note-this is a working dairy farm so the track can be closed for farm management) to the junction of tracks just to the N. Turn right here onto SPIT/102 and walk down to join the B9099. Turn left here to return to the car park.



*The River Tay near Kercock,  
looking E*

## 40.1. Stanley to Ballathie

CPPM 39, 40, 43 OS 53 PP In the centre of Stanley.



Follow STAN/138 from the centre of Stanley to cross the road leading to Stanley Mills and pass alongside the houses to follow the path uphill and round and through fields to reach the minor road leading to the Burnmouth ferry. Turn right onto this road and follow it for about 200m to turn left onto a track. Follow this track for a short distance to then turn right onto STAN/115 and follow it, through fields initially then down onto the old railway track, over variable and boggy ground, all the way to Ballathie. Turn right here to follow STAN/122 SE then round past Ballathie House Hotel to re-join STAN/115 and return to the centre of Stanley.

For Ballathie House see: - [www.ballathiehousehotel.com](http://www.ballathiehousehotel.com)

## 40.2. Campsie to Cargill along the Banks of the River Tay

CPPM 40, 43 OS 53 PP In a lay-by at the post-box at the entrance to Campsie Hill on the A 93 (on the right when travelling N). To avoid walking along the A93 it may be possible to park in a rough lay-by just before the gate on BURR/199.

40.2. Campsie to Cargill along the Banks of the River Tay



Walk N along the grassy verge of the A93 (very dangerous road) for about 250m to cross the road and walk W down the minor road to Campsie. Turn right at the foot of the hill and follow the track

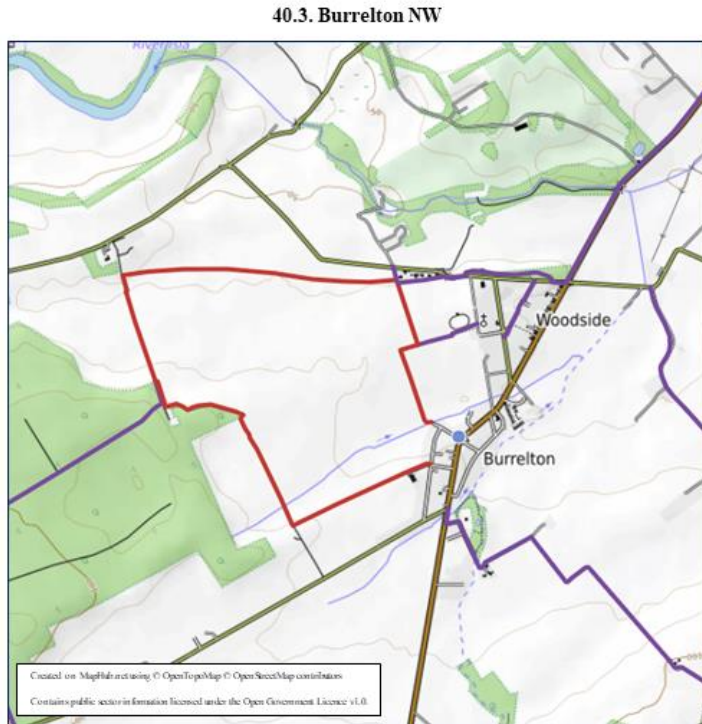
(BURR/199) N to a gate by a house. Pass the gate on the left and follow the track down to the riverside at Campsie Linn. Follow this path, vague and damaged in places, NE along the riverside all the way to Cargill (top section not walked). Retrace your steps to the starting lay-by.



*Dooicot at Stobhall*

### 40.3. Burrelton NW

CPPM 40 OS 53 PP On a side road in the centre of Burrelton.



Walk SW along the main road and take the path (BURR/4), at the apex of the corner in the road, NW between the houses down to a small bridge over a burn. Cross over the bridge to follow the path left and then NNW between the fields to reach, after about 0.4km, a right-angled corner. Turn right here to follow the path for a short distance to turn left, at a signpost at a T junction, and follow this path NNW for about 0.25km to join a rough road. Turn left to pass through a side gate onto the old railway track (BURR/198). Follow this track WSW, initially over good ground, as far as Laystone. (This walk can be continued WSW-not a core path-under the railway bridge and then over water-logged and rough ground, through gates, to eventually reach a fence. Then retrace your steps.) There are two options for the return: -

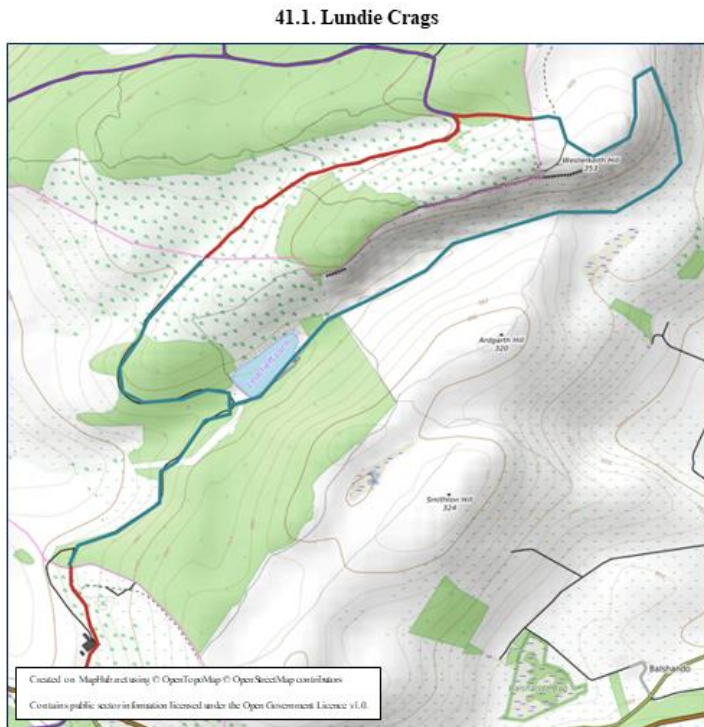
Option 1-Retrace your steps to the T junction to turn left and follow the path, then the edge of the playing fields, to reach a wide track. Turn right here to follow the track SSE to reach a road. Follow this road for a short distance to turn left and walk along the road for a short distance to reach Station Road. Turn right here and walk back to the centre of Burrelton.

Option 2 (not walked)-Follow BURR/198 SE to join BURR/193 and follow this back to the centre of Burrelton.

## 41.1. Lundie Crags

Although part of this walk lies in Angus a large fraction is in Perth & Kinross.

CPPM 41 OS 53 PP In the car park at the side of the A923 adjacent to the start of the walk.



Walk NNE along the track (KTNS/135) past Tullybaccart and round the edge of the forest to enter the forest. Just before Ledcrieff Loch bear left on the track and follow it round through the forest then NE uphill and all the way through the forest (KTNS/138 & KTNS/136) to emerge onto the open hillside. Bear right to shortly reach the Trig point. Retrace your steps to the car park.



*Lundie Crags from the E*

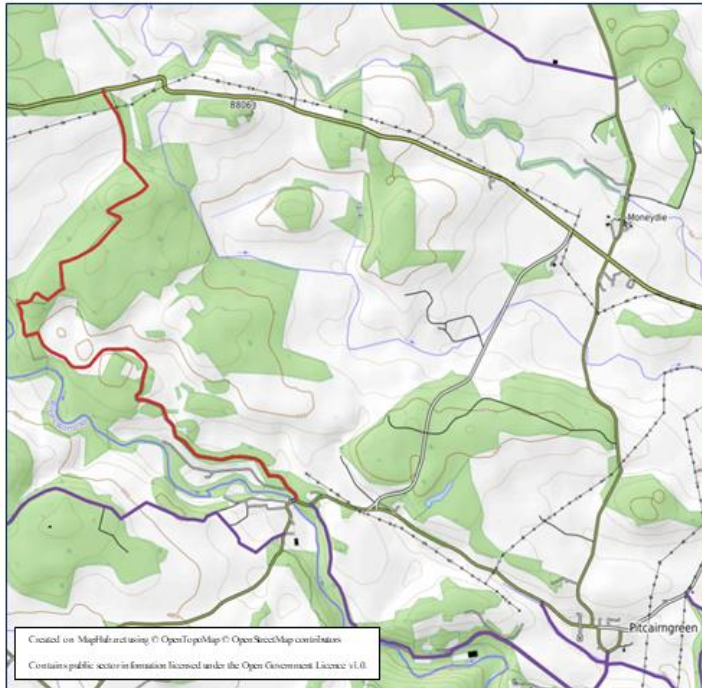
Note: - (1) An alternative return is to go NE from the Trig point to descend the steep grassy slopes and then turn sharp right to go round SW beneath Lundie Crags to reach Ledcrieff Loch and the outward track. This route could also be walked in reverse.

(2) The edge of the cliffs on Lundie Crags hosts many wild flowers in early summer. However, take care because of the steep drop.

## 42.1. Dalcruie NW

CPPM 42 OS 53 PP Near the entrance to Dalcruie Industrial Estate (not on business days) or at the triangle junction for the road to Moneydie.

42.1. Dalcruie NW



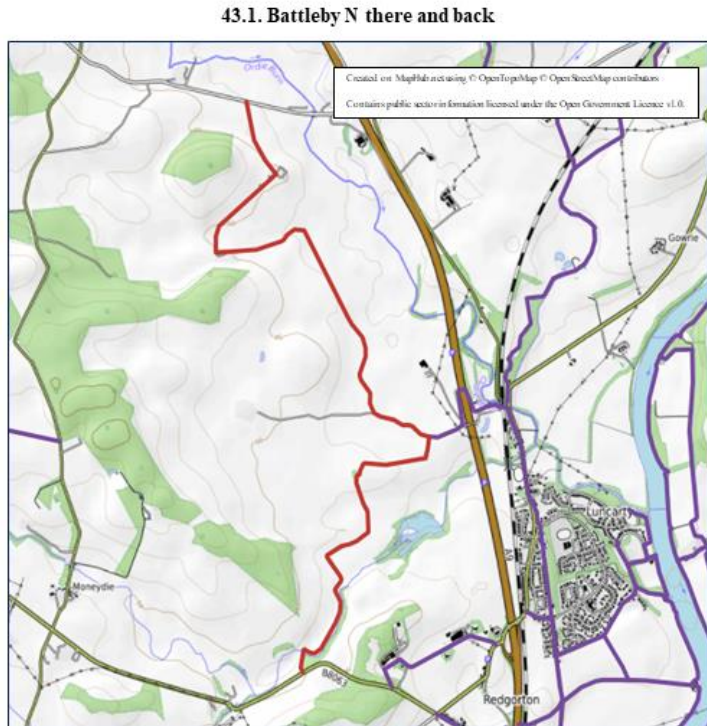
Walk NW on a good track (METH/105) past the industrial estate and round and up to Lynedoch Cottage. Bear sharp left here to follow the edge of the woodland round to enter the forest near Betsy Bell and Mary Gray's grave. Follow the path as it zig-zags through the woods to eventually reach the minor road near Murrayfield. Retrace your steps to the car park (Note: - only the first half of this route was walked.)



### 43.1. Battleby N Circular

Not during the lambing season-March & April.

CPPM 43 OS 53 PP In the car park in the grounds of Battleby House.



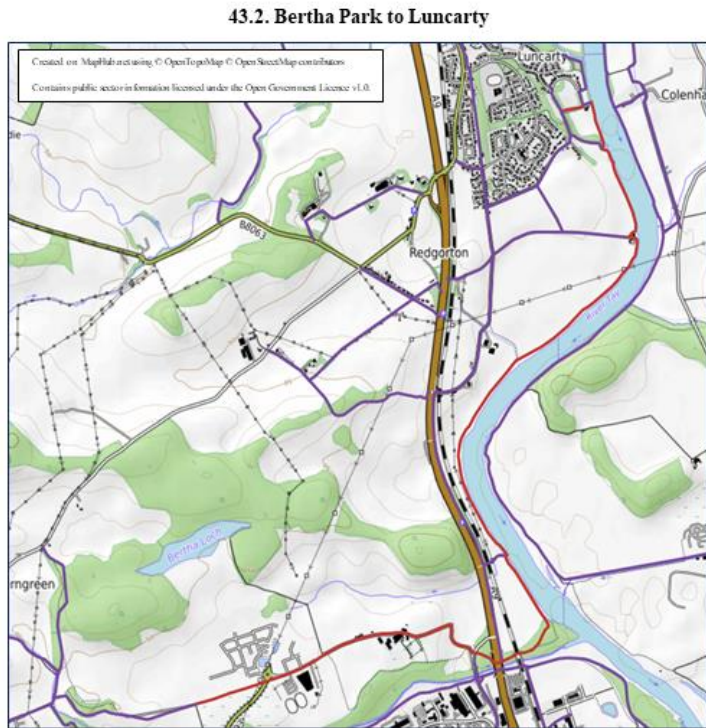
Walk out of the grounds of Battleby House to turn right and walk up the B8063 (no pavement) for about 0.5 km to reach a gate on the right, just past a corner in the road. Turn right here (no signpost) to walk down a muddy track (LUNC/122) to immediately cross a small bridge over the Shochie Burn. Follow this track as it wanders round over the fields for some distance and past Cramflat to a road junction. Turn left here to follow the road (LUNC/125) for just under 0.5 km to turn right into a field (yellow arrow on post) and follow the track (LUNC/125) NW for some distance past two standing stones in a field on the left and round to a junction at Gellybanks. Turn right here (yellow arrow on post) and follow the track to Tophead. Turn left out of the farmyard and follow the road down to reach a T-junction. Retrace your steps.



*The view to the Sidlaw Hills*

## 43.2. Bertha Park to Luncarty

CPPM 43, 50 OS 53 PP In the school car park at Bertha Park (not on school days).



Walk E along the road (LUNC/113) to just past the school and turn right (revised route-not shown on the core path plan map) onto a tarmac track (entrance currently through a builder's fence) and follow the track S then round E to re-join the road just past a cottage. Turn right onto the road and follow this down to the A9 to turn left and take a signed path

under the A9 and the railway, alongside the River Almond, to emerge on the banks of the River Tay. Turn left here to follow the path N along the banks of the Tay (LUNC/2, LUNC/112) and then turn left (LUNC/117) to reach Luncarty. Retrace your steps to Bertha Park via LUNC/100.

Note: - (1) For the King's Stone see <https://canmore.org.uk/site/26718/kings-stone>

(2) Denmarkfield Farm relates to the defeat of the Danes here by the Picts in the 10<sup>th</sup> Century.

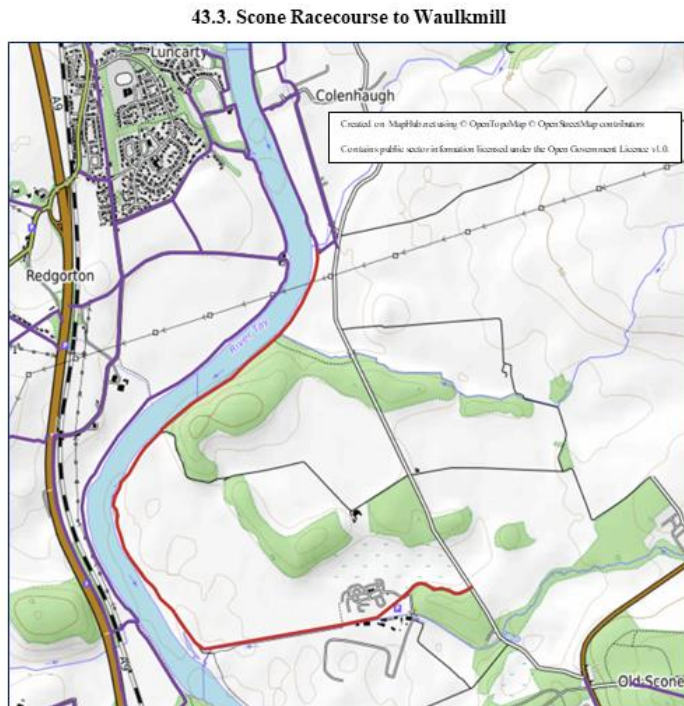


*The King's Stone on the W bank of the Tay near Luncarty*

### 43.3. Scone Racecourse to Waulkmill

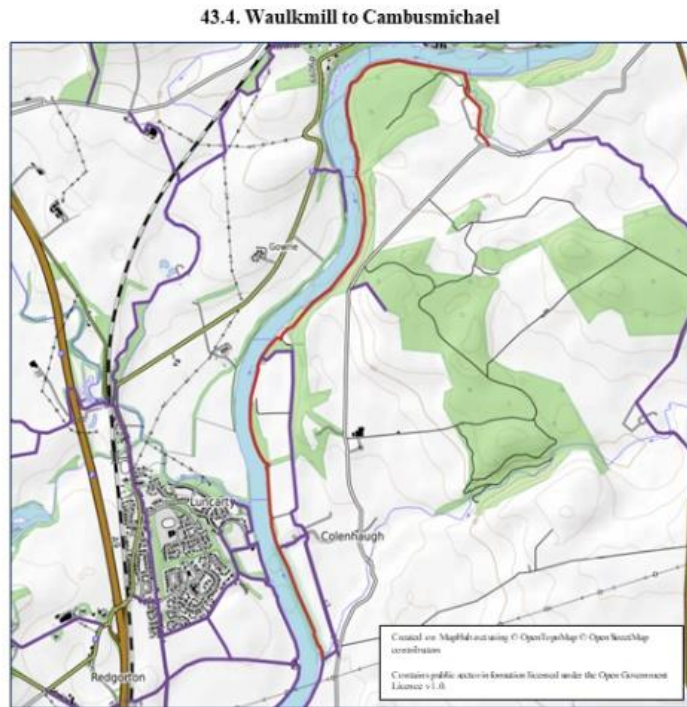
CPPM 43 OS 53 PP Near or possibly at Scone Racecourse (not on event days).

Follow SCON/139 then SCON/140 to Waulkmill. Either retrace your steps or follow the minor road from Waulkmill back to Scone Racecourse. This walk could be combined with walk 43.4.



## 43.4. Waulkmill to Cambusmichael

CPPM 43 OS 53 PP Near Cambusmichael.



Follow BURR/115 down to the riverbank and all the way to Waulkmill. Either retrace your steps (with the possibility of following SCON/129 also) or follow the minor road back to Cambusmichael (with the option of diverting onto BURR/109 to the stone circle).

Note: - It is just possible to extend the walk near Cambusmichael by turning left off BURR/115 at the top of the ascent from the riverbank and following a gap, over rough, overgrown ground, between the woods and the fence line round to the apex of the bend in the Tay to descend, over steep rough ground, through the woods to the riverbank and follow a rough path along the riverbank past the weir to then walk up to Campsie and follow walk 40.2.

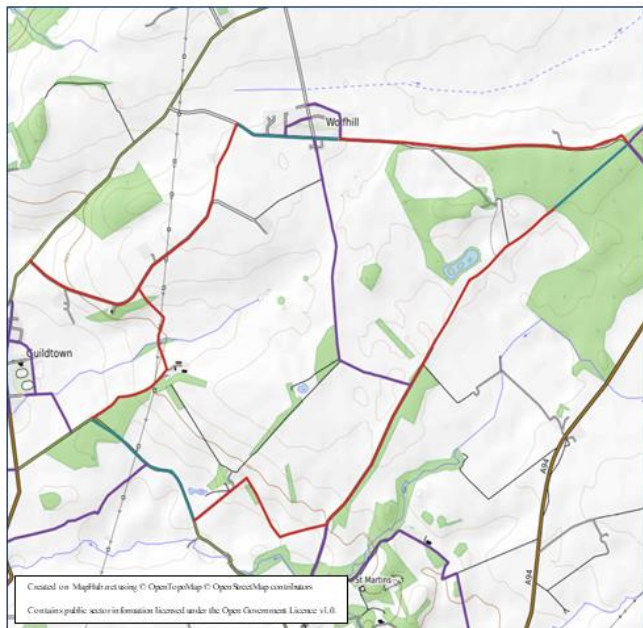


*Stanley Mills*

### 43.5. Guildtown E Circular to St Martins and Wolfhill

CPPM 43, 44 OS 53 PP In a lay-by at the T-junction, near Guildtown, at the west end of BURR/159.

43.5. Guildtown E Circular to St Martins and Wolfhill



Walk E along the road, BURR/159, past Hallroom and Craigmakerran Farm to turn right onto the track for Blackfaulds Farm. Turn right at Blackfaulds Farm to head SW on BURR/158 for about 0.5km to turn left onto a minor road and walk about 1km to the entrance road for Cairnbeddie Farm. Walk up BURR/162 to the farm to turn right just past the trees onto a track (BURR/162) and follow it SE then E to reach the track, BURR/13, coming from St Martins. Turn left here to follow the track (BURR/13) NE to Kingswell where the track became a rough, overgrown path. Follow this path (BURR/13) NE to reach a wide track at Dunsinann Estate. Continue NE on the estate track (BURR/13) to reach a pine forest. Here the track becomes rough, overgrown and muddy. Continue NE on this track to the end of the pine forest and a T-junction with another track (BURR/14). Turn left here to follow this track (BURR/14) round and along W into Wolfhill. Walk along the road through Wolfhill to turn left onto the track (BURR/159) for Redford Farm. Follow this track S past the farm to join a road. Continue on this road (BURR/159) and follow it round and back to the lay-by.



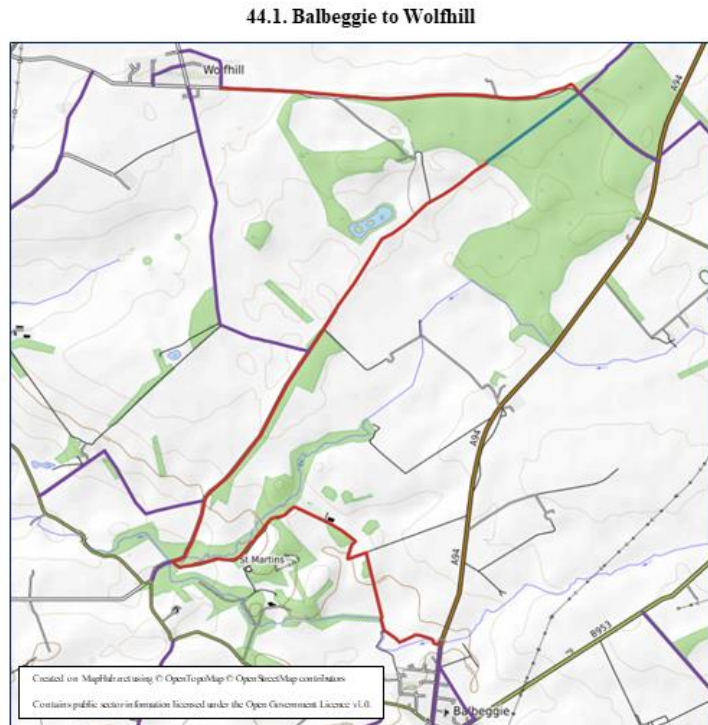
*The track (BURR/162) SE of Cairnbeddie Farm, looking N*

This walk can be extended by visiting St Martins via BURR/13. It can also be shortened by turning left onto the track (BURR/160) before reaching Kingswell and following BURR/160 to Wolfhill.

Note: - (1) The site of Macbeth's Castle is near Cairnbeddie Farm-see <https://scotlandspplaces.gov.uk/digital-volumes/ordnance-survey-name-books/perthshire-os-name-books-1859-1862/perthshire-volume-74>, entry OS1/25/74/19 & /20. (2) The Witches Stone of Macbeth fame is near St Martin's-see <https://canmore.org.uk/site/28628> and. <https://scotlandspplaces.gov.uk/digital-volumes/ordnance-survey-name-books/perthshire-os-name-books-1859-1862/perthshire-volume-74>, entry OS1/25/74/21.

## 44.1. Balbeggie to Wolfhill

CPPM 44 OS 53 PP In a car park by the shops, just opposite the church, in the main street, Balbeggie.



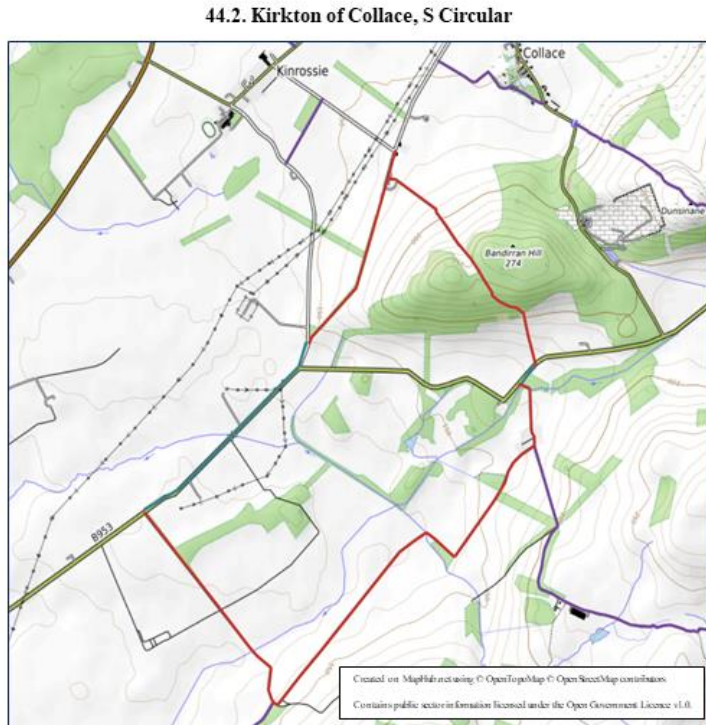
*St Martins Kirk*

Walk N up the main street and out of the town, for about 0.25km, to turn left, as indicated by the signpost onto BURR/154, a muddy, potholed, track, to walk down to the stables at the end of the track. Just before the stables complex turn right to take a path alongside a cottage and follow this down to the side of a burn. Continue on this path at the edge of the fields for about 0.5km to meet another track. Turn left, as indicated by the yellow arrow to follow this down for a short distance and then round the edge of a field to meet a junction of tracks. Turn left, as indicated by the yellow arrow, to follow a muddy track slightly uphill. Continue on this track as it turns SW and follow it down through the trees. into St Martins near the Parish Church. Turn right at the end of the cottages to follow the signed track, BURR/13 NE to Kingswell where the track became a rough, overgrown path. Follow this path (BURR/13) NE to reach a wide track at Dunsinann Estate. Continue NE on the estate track (BURR/13) to reach a pine forest. Here the track becomes rough, overgrown and muddy. Continue NE on this track to the end of the pine forest and a T-junction with another track (BURR/14). Turn left here onto BURR/14 and follow the track then a road into Wolfhill, At the crossroads in Wolfhill turn left onto the track (BURR/160). Follow this track back to meet BURR/13. Turn right onto BURR/13 and retrace your steps to Balbeggie.

Note: - (1) At St Martins the map indicates an “Abbey” but this is simply the name given to an old, large, house.

## 44.2. Kirkton of Collace, S Circular

CPPM 44 OS 53 PP Beside the school and church (not on the 1<sup>st</sup> Sunday in the month nor on schooldays) in Kirkton of Collace or alternatively in Collace and take BURR/19 down to Kirkton of Collace.

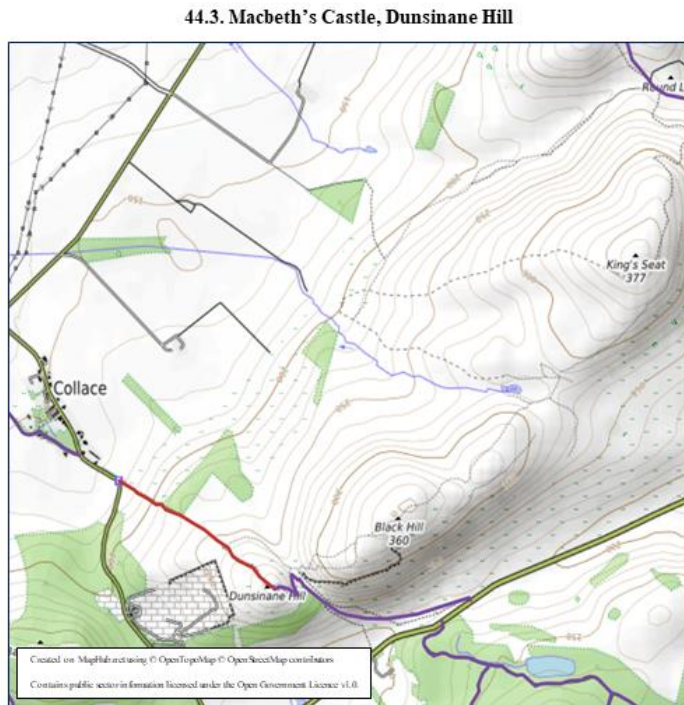


*The avenue on BURR/132 leading to the B953*

Walk SSW along the track for a short distance to turn left, at the signpost, onto BURR/18 to pass through the farmyard and follow the path uphill over two low electric fences beside the mobile phone mast compound and then a third low electric fence by the gate into the wooded area. Pass through the gate to continue up to the crest of the hill. Continue to follow the vague path, over boggy ground, SSE and downhill to reach a gate. Pass through the gate and follow the arrow-marked route down the side of a wood and across a forest track to reach a fenced corner. Cross over the style, as indicated by arrows, and follow the edge of the field downhill to reach the B953. Turn right here to follow the road for a short distance to then turn left onto BURR/134 up the road to Southtown of Bandirran Farm. Immediately past the end of the farm byres turn sharp right at the Y junction onto BURR/133 to follow the muddy and puddled track SW for about 1.5km to reach a junction of tracks by a wood. Turn right here onto BURR/132 to follow the track downhill all the way to the B953 (a possibly better variation-not walked-would have been to turn right at the crossroads about half-way down and follow the road to East Melginch Farm and thence to the B953). Turn right here to follow the road NE for about 1 km to reach a Y junction. Turn left here to take the minor road signed for Kinrossie then, very shortly, turn right off this road onto BURR/17 and follow the track back NNE to Kirkton of Collace.

### 44.3. Macbeth's Castle, Dunsinane Hill

CPPM 44 OS 53 PP In the layby at the start of BURR/20 or in Collace.



Walk up the road from Collace to take BURR/20 and follow it all the way uphill to Macbeth's Castle (fort). Return by the same route.

Note: - (1) This walk can be extended NE to King's Seat, at the end of the ridge, by descending steeply SE from the castle for a short distance to turn left onto a vague path and down into the dip. Then follow the path steeply uphill and continue along the ridge over Black Hill and eventually to King's Seat. Return by the same route. (2) The excavation of Macbeth's castle is described at: - [canmore.org.uk/site/30660/dunsinane-hill](http://canmore.org.uk/site/30660/dunsinane-hill)

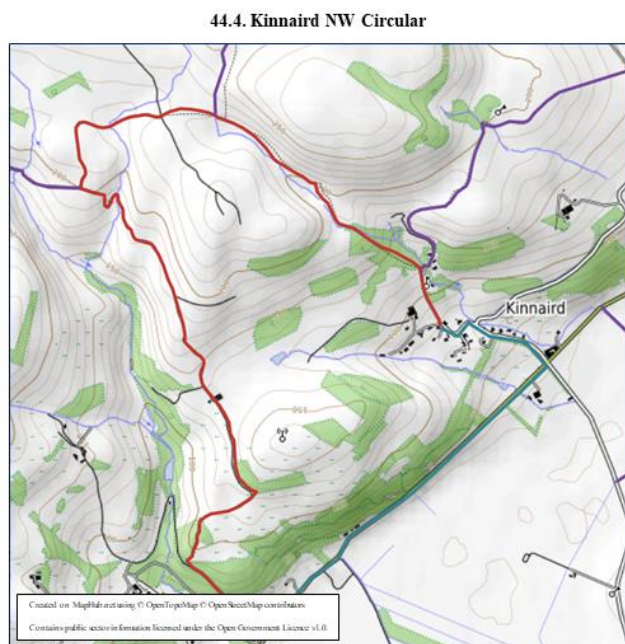


*Macbeth's Castle from the N*



## 44.4. Kinnaird NW Circular

CPPM 44 OS 53 PP: In a layby opposite the settlement of Flawcraig.



Walk NE along the minor road from Flawcraig for about 1.5 km to turn uphill at the crossroads for Kinnaird. Walk uphill for about 0.5 km to reach a road junction. Turn left here to walk into Kinnaird village and follow the road round to the right for a short distance. Take ITUR/126 on the right uphill to pass Kinnaird castle and reach a bridge over a burn at a bend in the road. Take the unsigned path, ITUR/118 on the left just before the bridge and follow this path up through the woods (with a steep drop to the burn on the right-hand side) to emerge onto the open hillside at a stile. Cross the stile (Note 1) and follow the track (then a vague path) on the right-hand side through the gorse and between the hills, over boggy ground (keep to the right) to eventually reach a gate. Pass the gate (it may be locked) and continue to follow the vague path gently uphill for a short distance to a ruined house hidden in some woodland. Turn W here to cross the field to a gate. Pass the gate onto a wide farm track. Turn left here to follow ITUR/135 W (ignoring the track SE which leads to a hill summit.) then S to reach another junction of tracks. Turn left here to follow ITUR/120 all the way downhill to the minor road. Turn left here to walk back to the parking spot.



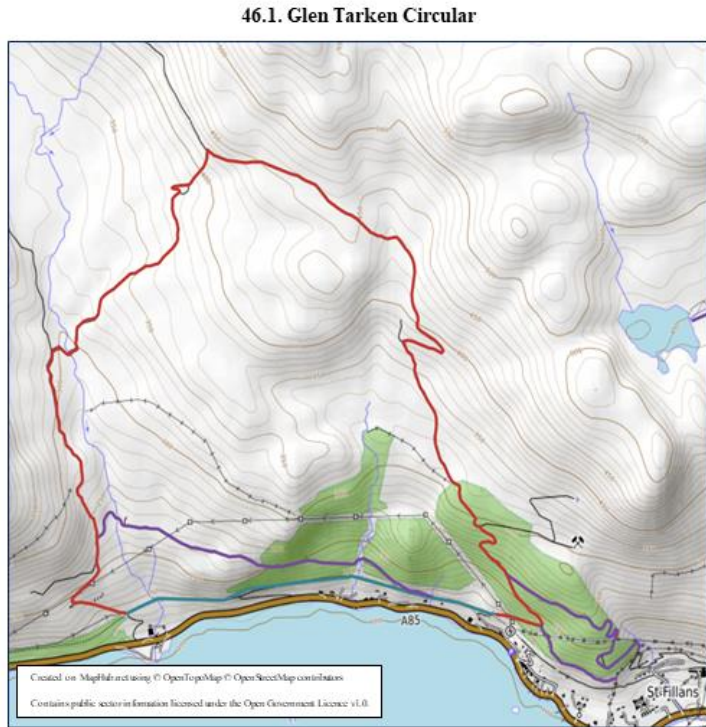
*Kinnaird Castle*

Note: - (1) There is an option (not walked), when first arriving at the open hillside, to bear left over rough ground to the top of the hill and then follow the farm track from there NW to ITUR/135. (2) There are two options on reaching ITUR/135 to make a longer circuit-(a) to turn right and follow the farm track (not walked) to the B953, then turn left to walk down the B953 and pick up BURR//134 then ITUR/134 back to join ITUR/120 or (b) to turn right off ITUR/135 onto ITUR/134 and reverse option (a). (3) Partway down ITUR/120 there is an unsigned grassy track (not walked) which the OS map indicates leads back to Kinnaird.

For Kinnaird Castle history see <https://canmore.org.uk/site/30436/kinnaird-castle>. The deserted village of Pitmiddle is 0.5 miles N of Kinnaird, see <https://www.thecourier.co.uk/fp/news/local/perth-kinross/1035486/long-read-soon-there-will-be-nothing-left-the-sad-story-of-taysides-ghost-village/>.

## 46.1. Glen Tarken Circular

CPPM 46 OS 51 PP In the car parking area on the A85 at the W end of St Fillans, by the toilets.



*Loch Earn from the Glen Tarken track*

Walk E along the road verge for a short distance to take the steps, on the E side of the hydro scheme outfall, up to the forestry track. to zig-zag uphill (STFI/101) and across the bridge over the old railway track to bear left steeply uphill. (Part way up the hill there is an option to turn right through a gate onto STFI/105 which zig-zags up a track to the excellent viewpoint over St Fillans and Loch Earn-make sure you take the correct gate i.e. not the first one you encounter.) Continue uphill, generally NNW, and follow the track (Note 1) all the way to the head of Glen Tarken. Follow the track round the head of the glen and then all the way down (Notes 2, 3) on STFI/100 to meet the old railway track near Loch Earn. Turn left to follow the old railway track (overgrown and boggy in places) all the way back to St Fillans. Exit from the railway track onto the side road by the houses and walk back down to the car or walk through to the old railway bridge you crossed at the start to exit on a path uphill on the right just after you pass under it.

Refreshments are available in St Fillans at the hotels and the shop. For St Fillans history see <https://www.stfillanscc.org.uk/heritage>

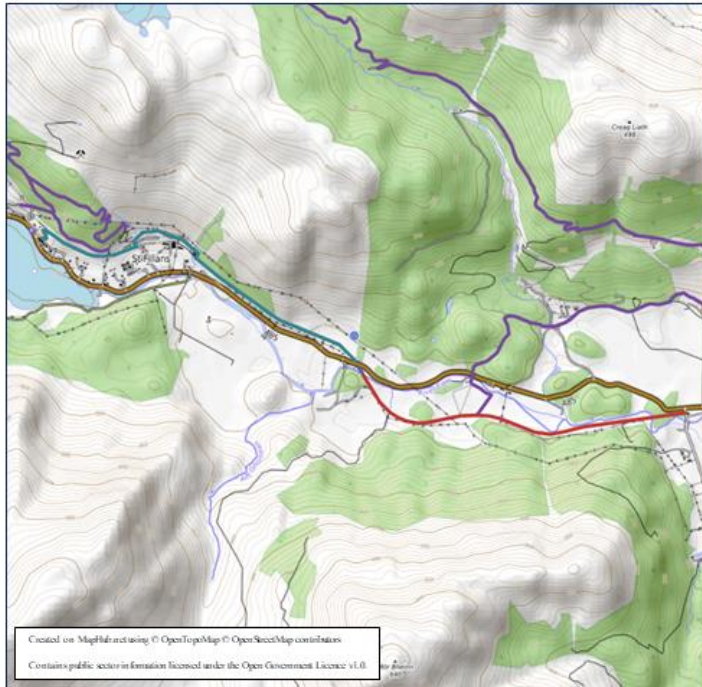
Note: - (1) Deer and grouse shooting takes place in this glen during the season and there are many free roaming sheep all year. (2) As you descend to the old railway track there is the option of taking STFI/108 by descending left to a bridge, crossing the burn, and following the path down the hillside to subsequently meet the old railway track. (3) As you descend to the old railway track on STFI/100 you pass the ruins of the old village.

The paths around Comrie offer many options and variations which are well known. Hence just a few longer options are described.

### 47.1. Dalchonzie to St Fillans on the Old Railway Track

CPPM 46, 47, 53 OS 51 PP In the small car parking area on the minor road just off the A85 at Dalchonzie at the start of the old railway track.

47.1. Dalchonzie to St Fillans on the Old Railway Track



*The view W along Loch Earn from St Fillans*

Pass through the gate and follow the signposted old railway track (CMRI/127) W for about 2km (ignoring a path right to Kindrochet indicated by a signpost) to Dundurn farm road end. Then cross a bridge over the River Earn (STFI/103) and pass under the road bridge on the A85. Continue on the now tarmacked section towards St Fillans. Just at St Fillans the track bypasses a farm by climbing zig-zag up the hillside to continue past the farm and then descend steep zig-zags to the old bridge structure (bridge removed) beside the old railway station (now a caravan park). Pass through the gap and follow the track sharp right to regain the course of the old railway track and pass through a tunnel and a cutting before taking an exit path sharp left to descend zig-zag onto a road to pass behind the Four Seasons Hotel (and pass a chalet marked by a plaque indicating an occupancy by The Beatles in 1964) and thus to the A85 picnic area and viewpoint by Loch Earn. Walk along the pavement back E through St Fillans, taking in the viewpoint from the foot-bridge (on the right) over the River Earn, to turn left onto Station Road and ascend the road to join, at the old bridge structure, the outward route and thence return to Dalchonzie.

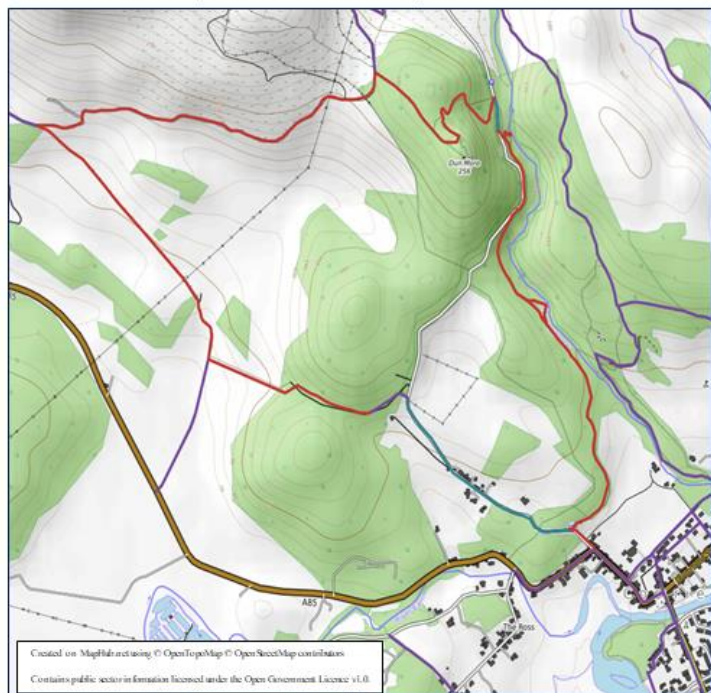
Refreshments are available in St Fillans at the hotels and the shop.

Note: - (1) It is possible to extend the walk on the old railway track by continuing from St Fillans to Locheearnhead, although some of the ground is overgrown and boggy. This would make for a very long walk.

## 47.2 The Maam Road, the Melville Monument, and the Deil's Cauldron Circular

CPPM 47 OS 52 PP In the small car park just off the A85 in Comrie, or in the small car park at the start of the Glen Lednock Road, just off the A85, or at the car park below the golf course just before you enter Comrie.

47.2 The Maam Road, the Melville Monument, and the Deil's Cauldron Circular



Walk NW along the A85 then up the Glen Lednock road for about 1km, passing some houses and then a signpost (this track which, although a public right of way, passes through the grounds of a house-this is avoided by the described route) to reach a corner in the road. Turn left here to pass through a gate into the woods and follow the rough path (CMRI/19) through the woods, through a gate and then across the fields on a vague path, bearing to the right, to reach the Maam Road track (CMRI/19). Turn right to follow this track for about 1km to a Y junction. Take the right fork here to head E on the track up towards the crest of the ridge. Turn right to take the path (CMRI/53) through the woods to the Melville Monument. Retrace your steps to the crest of the ridge. Cross the crest of the ridge and descend N, following the track zig-zags down (Note: - it is possible to take a short cut on a rough path on the right, just at the start of the descent) to reach the minor road. Cross the style onto the Glen Lednock road. Turn right to walk down the road for about 0.5km to take the path (CMRI/7) and the steps going left into the gorge. Follow the very steep steps down on the wooden walkways to view the Deil's Cauldron waterfall. Return to the main walkway and continue SE on the walkways and then a path down the gorge, diverting left to view the Small Cauldron, to eventually bear right on the track which shortly returns to the start of the Glen Lednock road and the car parks.



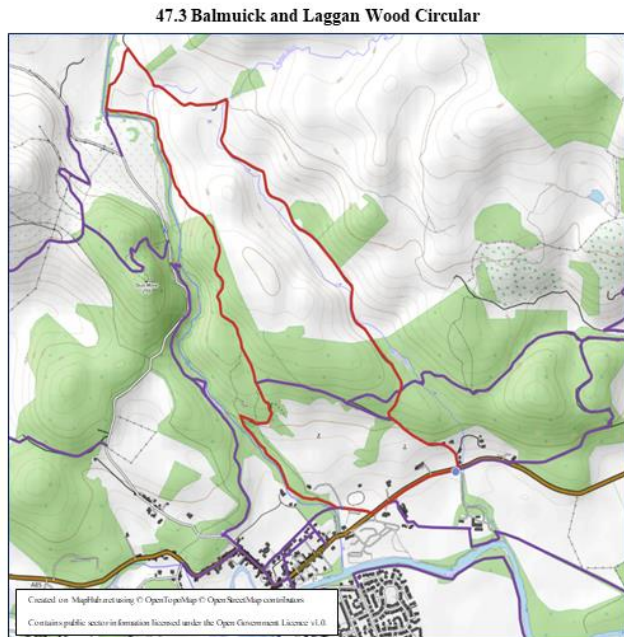
*The Deil's Cauldron*

Note: - (1) The wooden walkways to the Deil's Cauldron can be very slippery when wet or icy (at least one person has broken their ankle here). So considerable care should be taken. Also, the steep gorge may not suit those who are vulnerable to vertigo. (2) To avoid the wooden walkways of the Deil's cauldron an alternative option, after descending down the zig-zags from the crest of the ridge to the Glen Lednock road, is to turn left to take the signposted track (CMRI/8) down to cross the "Shaky" Bridge over the river Lednock then immediately right to follow the path round and along the riverbank, then up into Laggan Woods, through Laggan woods, then downhill, bearing right at the junction of tracks, to go uphill for a short distance (the viewpoint over Comrie is on the left), then steeply down the steps to reach the bank of the River Lednock. Continue SE along the river bank (CMRI/110) to reach a footbridge and turn right to cross the footbridge onto the track which leads SW directly to the A85 and the car parks.

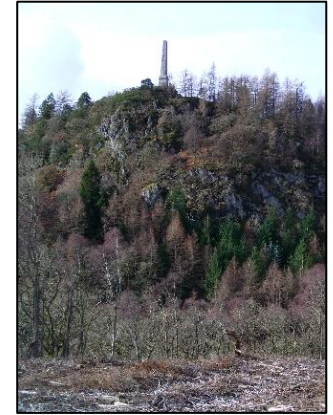
Plentiful refreshments are available in Comrie at the cafes, restaurant, and fish and chip shop.

### 47.3 Balmuick and Laggan Wood Circular

CPPM 47 OS 52 PP On a lay-by on rough ground at the start of a track just off the A85 on the left just after the caravan and camp site and just opposite The Milton. Alternatively, it can be more convenient to use the car park near the golf course a bit further along the A85, on the right, and walk back along the A85 to start the walk.



Cross the road to take the signed track straight ahead. Follow this NW for about 1 km to continue N on this track at a junction for a short distance and then NW all the way (CMRI/36) to Balmuick Farm. Cross the bridge and bear left through the farm to continue on the track to reach West Cottage. Turn sharp left to pass through a small gate and go S down the field to pass through another gate and reach the River Lednock at the “Shaky” Bridge. Bear left to follow the path (CMRI/8) round and along the riverbank, then up into Laggan Woods, through Laggan woods, then downhill, to shortly reach a junction of tracks. Take the righthand option to go uphill for a short distance and across the summit (the viewpoint over Comrie is a short distance off the track to the left), then steeply down steps to eventually reach the bank of the River Lednock. Continue SE along the river bank (CMRI/110) to eventually reach the car park near the golf course and the A85. Turn left along the A85 to return to the lay-by.

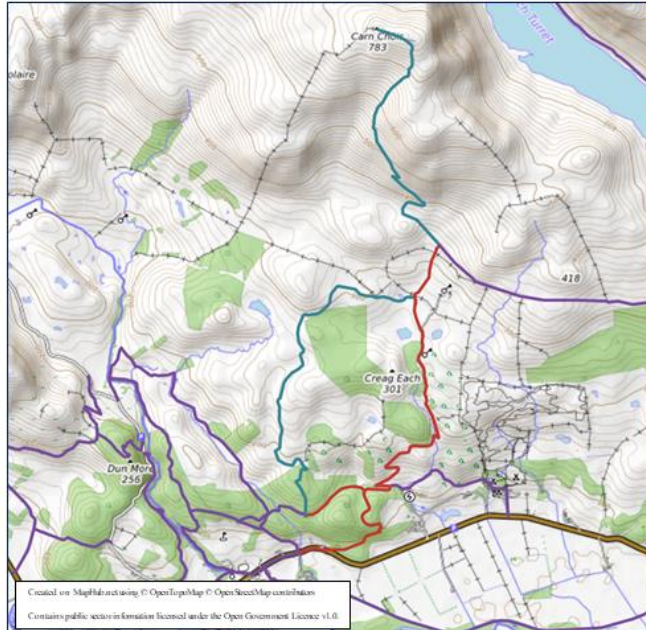


*Lord Melville's  
Monument from the E*

## 47.4 Comrie to Breafordie Circular (with the possibility of an extension to Carn Chois)

CPPM 47, 37 OS 52 PP On a lay-by on rough ground at the start of a track just off the A85 on the left just after the caravan and camp site and just opposite The Milton. Alternatively, it can be more convenient to use the car park at the recycling centre near the golf course a bit further along the A85, on the right, and walk back along the pavement by the A85 to start the walk.

47.4 Comrie to Breafordie Circular (with the possibility of an extension to Carn Chois)



*Ben Chonzie from Carn Chois*

Walk E along the A85 (CMRI/137) to the E end of the camping and caravan site to cross the road and enter the E end of the site to take the signed track into the woods (CMRI/140). Follow this track through the woods to reach another signpost to turn left off the track and round through the woods to join another track (CMRI/122) and follow it right, down to a junction of four tracks. Bear left at the junction, as signed, to shortly follow the track steeply uphill (CMRI/122) to eventually reach a bridge over the Balmenoch Burn. Just past the bridge bear left to follow this track (CMRI/122) uphill to eventually pass through a gate in a deer fence to shortly take the signed track (CMRI/122) to the left. Follow this track to pass through another gate in the deer fence and after a short distance arrive at a junction of tracks. There are two options here. Option 1: - to complete a circular walk take the track on the left (not a core path) and follow it past the small reservoir and up and round the hillside to pass through another gate in a deer fence to continue on this track round and down to the corner of a wood on your left. Turn left off the track and walk a short distance down to a gate and a fence. Cross the fence at a style and follow the track as it winds downhill for some distance to eventually reach a gate at the edge of a forest. Pass through the gate and follow the track downhill to reach the original junction of four tracks and thence return to the car park. Option 2: - to ascend to Carn Chois

continue on the track straight ahead (CMRI/122) uphill to join a track contouring round the hillside (this track [CMRI/122] comes from the dam in Glen Turret). Turn left here to follow the track (not a core path) down then up to the crest of the slope to reach a vague junction of tracks. Turn right here to follow the track as it zig-zags up the hillside for some distance to eventually reach a gap in a fence close to the top of the ridge. Pass through the gap to follow the path left up to the crest of the ridge and then along the crest to the summit of Carn Chois (786m). Retrace your steps or follow the circular route described in option 1. Notes: - (1) From Carn Chois it is possible to follow a path to the summit of Ben Chonzie (only in good, clear, weather) but this makes for a very long walk. (2) This walk can also be completed by starting from Comrie Croft (CMRI/123).

## 47.5 Water of Ruchill and River Earn Circular via Auchingarrich

CPPM 47, 55 OS 57 PP In the small riverside car park on the road on the right just across the main bridge over the River Earn in Comrie.

47.5 Water of Ruchill and River Earn Circular via Auchingarrich



Take the path at the E end of the car park down to the riverside and follow the Ruchill Water generally SW (CMRI/14 then CMRI/1) and the signs for Cultybraggan, staying close to the river, for some distance to eventually turn left to reach a farmyard. Pass through a gate and by an old churchyard to follow the track through the farmyard and reach the minor road at Cultybraggan. Turn left along this road, past the entrance to the old POW Camp (visits available) and right at the end of the fence to ascend a short slope and reach the B827. Follow this road ESE, uphill, for about 1 km to reach the entrance to a minor road on the left (note: - the entrance to Auchingarrich Wildlife Centre [www.auchingarrich.co.uk](http://www.auchingarrich.co.uk) is just beyond this. Refreshments are available there). Turn left onto the minor road. (Note 1) Follow this road for about 0.5 km to turn left onto the track (CMRI/17) for Mill of Fortune Farm to immediately pass through the signed gate on the left. Follow this track (CMRI/17) down to a field to turn right and follow a rough path by the fence down, across the field, and then diagonally N uphill to reach a path running NE above Cowden Loch. Follow this path through the fields to reach a gate onto a track. Pass through the gate to follow the track (CMRI/17) all the way to Drummondernoch Farm. Turn left here to follow the track down to the minor road (busy). Turn right here to follow the road for about 200m to reach a lay-by with a gate and a track leading to the River Earn. Cross the gate to head NW (CMRI/35) to another gate in the middle of the fence on the LHS of the field. Pass through this gate to head NW to enter a wetland area beside the river bank. Follow the path (badly overgrown in summer) through wetlands near the riverbank to eventually emerge onto a field. Follow the path (CMRI/35) round the edge of the field, and near the riverbank, all the way along the riverbank to emerge onto a road at Comrie. Follow the road along to the junction and cross the B827 to the car park.



*The view W to Ben Halton & Mhor Bheinn*

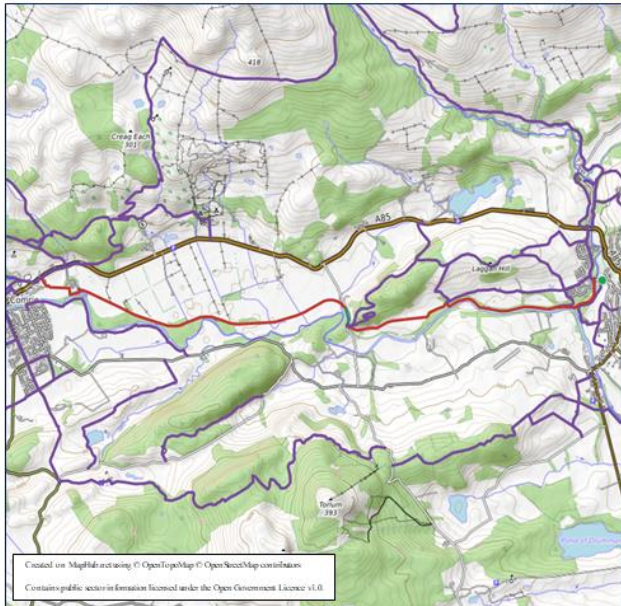
Note: - (1) There is an option here to turn left to enter a field at the signpost for Comrie (Bogton Braes Circuit, CMRI/6). Follow the track, generally N, to reach Comrie, passing through the houses (CMRI/12) to reach the B827 and thence return to the car park. Again, there is another option on reaching the houses i.e. to turn left and follow the path (CMRI/2) along to reach a pictish stone by the road (B827). Cross the road and follow the farm track (CMRI/3) round and down to the banks of the Ruchill Water. Turn right and retrace your steps to the car park.

There are many paths in Crieff, particularly around the Cnoc and Crieff Hydro, which are well known. Possible longer walks are described below. For other Crieff walks see 55.2 Torlum Wood to Auchingarrich Circular, and 56.1, Crieff to Drummond Castle Circular

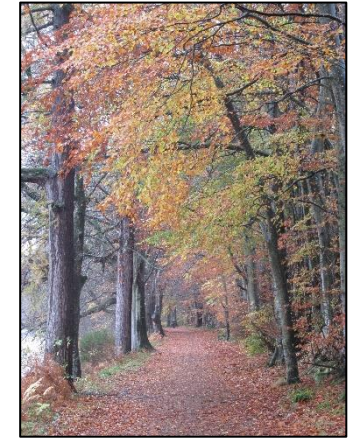
## 48.1 Crieff to Comrie on the Line of the Old Railway Track

CPPM 47, 48, OS 52 PP In the car park for Macrosty Park in Crieff.

48.1 Crieff to Comrie on the Line of the Old Railway Track



Walk W up the road to cross the bridge over the Turret Burn and turn sharp left to follow the track (CRIF/112) and path all the way down and round to the banks of the River Earn. Follow the riverbank west (CRIF/51) and continue for some distance (ESTN/100) (Lady Mary's Walk) until the track turns up away from the riverbank to a junction of tracks (Note 1). Turn left off the track here to follow a path (ESTN/6), between the woods and a fence, to a gate. Pass through the gate (Note 2) to bear right uphill alongside a wall and then downhill to eventually pass by the buildings at Trowan and reach the minor road (Note 3). Turn right along the minor road for a short distance to turn left onto the old railway track (CMRI/126) and follow it all the way (with diversions for missing bridges and overgrown sections) all the way to just before the holiday park at Comrie. Follow the diversion signs here to reach the A85 and walk into Comrie.



*Lady Mary's Walk*

Refreshments are available in Crieff and Comrie.

Note: - (1) The track east here (ESTN/6) leads back to Crieff on CRIF/52. As you start back, just off this track to the left a path (CRIF/56) leads uphill to Laggan Hill and back down to re-join ESTN/6. Near the E end of Laggan Hill there is a further option, CRIF/124 & CRIF/12, to return to

Crieff. This option can be very muddy on the hillside.

(2) It is possible here to gain your way, on the left, onto the line of the old railway track and follow it (although badly overgrown and muddy in places) to Trowan just before the tunnel. However, the exit here from the track is problematic.

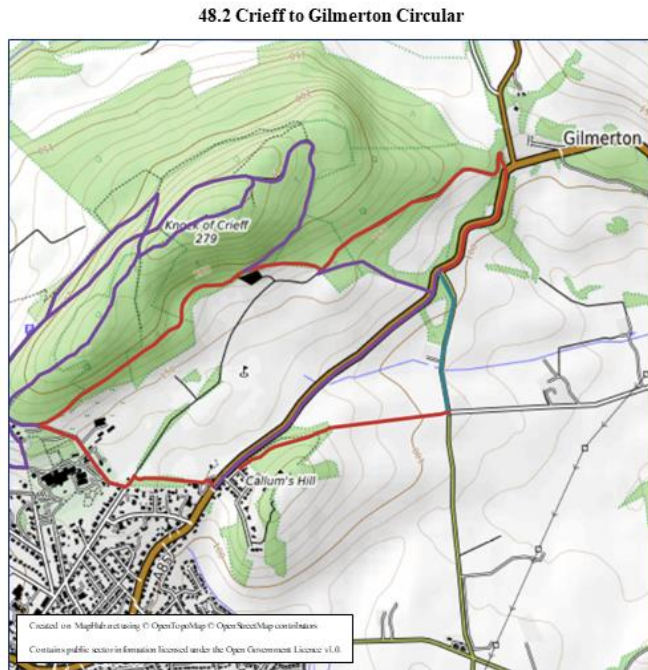
(3) There is an option here to turn right along the road for a short distance to turn right up the path to the monument (CMRI/58) and then continue NE on ESTN/116 and ESTN/7 all the way back to Laggan Hill and the options from there.

(4) This walk can be extended to Lochearnhead for a very long walk. Walk through Comrie on the A85 to turn left over the old bridge over the River Earn and follow the minor road west then round to the north to Dalchonzie. Then follow route 47.1.



## 48.2 Crieff to Gilmerton Circular

CPPM 48, OS 52 PP In the side streets at the east end of Crieff.



Walk up the A85 to just opposite the golf course and turn up Callum's Hill to immediately turn left and follow the road below the houses to take a path (ESTN/9), rough in places, through the woods then down between the fields to reach a minor road. Turn left to follow the minor road up to the A85. Turn right to take the pavement (ESTN/144) alongside the A85 down to Gilmerton. At the corner just past the 30mph sign cross the road and pass through a gateway to follow a track (ESTN/51) round and uphill (Note 1) and then all the way to join the main Cnoc track (CRIF/110) near the golf course (Note 2). Bear left to follow the track (CRIF/110) all the way along to the minor road at Crieff Hydro. Turn left down the road (CRIF/100) to pass the riding centre and reach the top of the main road. Turn left here onto the track for the golf course to immediately turn right and follow the signed path (CRIF/13) through the woodland and then past the clubhouse to reach the A85 and return to the car.

Refreshments are available in Crieff at the various cafes and restaurants. For Crieff Hydro see <https://www.crieffhydro.com>. For Crieff Golf Club see <https://crieffgolfclub.co.uk>

Note: - (1) There is a vague, rough, path on the right here which leads through the woods to a wall and then, alongside the wall, initially steeply, uphill through woods and round a corner to eventually emerge near Kate McNieven's Crag viewpoint (views to Monzie Castle). Various paths around the Cnoc can be taken from here to return to Crieff (e.g. ESTN/100 & CRIF/100).

(2) It is possible to bear left here to pass through a gate and walk along a track through the middle of the golf course which leads back to the clubhouse and the A85.

## 48.3 Crieff to The Glenturret Distillery and Macrosty Park Circular

CPPM 48, OS 52 PP In the side streets at the east end of Crieff.

48.3 Crieff to The Glenturret Distillery and Macrosty Park Circular



Walk up the A85 to the Golf Club to turn left into the grounds and follow CRIF/13 through the grounds to reach the main road near Crieff Hydro. Bear right here to follow CRIF/100 up past the riding centre and up the hill, then over the top of the hill to take the left fork (ESTN/108) downhill past the activity centre and all the way down the rough track (ESTN/06) to continue on the track as it turns round W to reach a junction of tracks just above the distillery. (To reach the distillery take the track ESTN/105 downhill to cross a bridge.) Continue parallel to the Turret Burn as the path (ESTN/06) heads S to reach the A85 (Note 1). Cross the A85 with care to turn right and then sharp left onto the minor road (CRIF/115) which leads to Macrosty Park. From Macrosty Park walk back uphill through Crieff to return to the car.

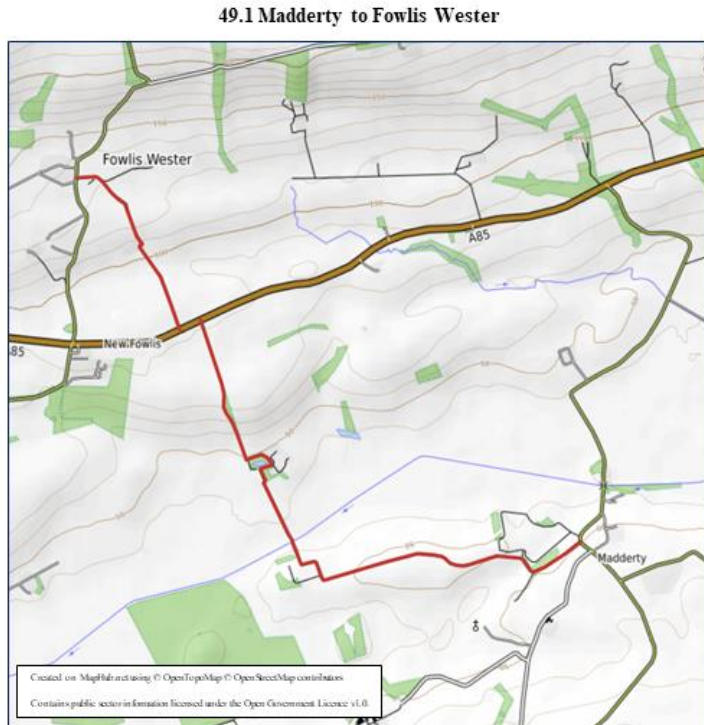
Refreshments are available in Crieff and at the distillery. For Crieff Hydro see <https://www.crieffhydro.com> For Crieff Golf Club see <https://crieffgolfclub.co.uk> For Glenturret distillery see <https://www.theglenturret.com>

Note: - (1) It is possible here to take a different route to Macrosty Park by crossing the road and bearing left to follow the A85 round the corner back towards Crieff for about 0.25km to turn right through a gate and follow a high-level track above the Turret Burn to emerge above the parks. Continue at a high level to return to the car.

## 49.1 Madderty to Fowlis Wester

At the time of writing, the bridge over the Pow Water was missing so this walk may be achievable.

CPPM 49 OS 52 PP In the Madderty Church Car Park (not on Church Service days).



Walk SE up the road from the church to the minor road. Turn left here to walk up the hill past the school and then follow the road NE to a junction just opposite Abbey Farm. Turn left here for a short distance to turn left again onto the road for Woodend (ESTN/11)). (A notice attached to a fence post advises that the bridge over the Pow Water is missing.) Follow the road all the way round to Woodend. Walk down to the house to turn left and pass two cottages to turn immediately right through the remains of a farmyard and pass through two walkers' gates to cross the field NW to arrive at Pow Water. The continuation (not walked) is up the track past Drumphin to the A85 (very busy road). Turn left along the verge for a short distance to cross the road and take the track for Drummy (ESTN/52) and follow it all the way to Fowlis Wester. Retrace your steps to the car park.

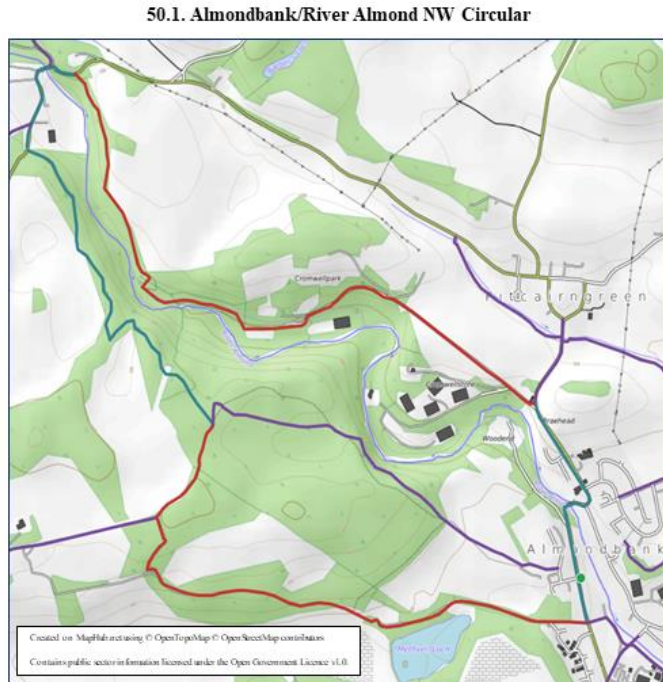
There is a good replica of a pictish stone in the square at Fowlis Wester. The original is inside the church where it can be viewed. See [www.strathearn.com/pl/fowlis\\_church.htm](http://www.strathearn.com/pl/fowlis_church.htm)

Note: - (1) This walk could be completed in the reverse direction by parking at Fowlis Wester Village Hall. (2) This walk could be extended to Loch Meallbrodden by walking up the road from Fowlis Wester Village Hall to the crest of the hill and turning left onto the track for the loch.

Perth offers a number of walk options using core paths. These will not be described since they are well known. Some of them start at the North Inch, others at Noahs Ark, and others at Broxden Park & Ride. Two examples of possible longer walks on CPPM 50 are set out below.

### 50.1. Almondbank/River Almond NW Circular

CPPM 42, 50 OS 53 PP In the centre of Almondbank on the main road.



Walk S down the road for a very short distance to turn sharp right onto the signed track to Methven (METH/103). Walk through Methven Woods, and past Methven Loch, for about 2km to follow the track round NE and then NW to reach a signpost at a gate. Turn right here to follow the track (METH/101) round NE into the wood to reach another junction of tracks at a signpost. Turn left to take the unsigned track NNW (not marked on the OS Landranger) and follow it through the woods for some distance round and down to a gate. Bypass the gate on a path on the left to return to the track and follow it NNW down and round for some distance through the woods to reach the Methven-Pitcairn Green Road at a very muddy lay-by near Dalcrue. Turn right to follow the road down to cross the bridge over the River Almond to walk up the road for a short distance and turn right into the wood at a signpost (lacking its fingerpost) to follow the path (METH/22) up through the woods, high above the river, with the ground dropping very steeply away to the river. Follow this path for about 1 km to drop down to a junction with another path. Turn right here to follow the path down to the river to view the upper weir. Turn left here to follow the path SE near the riverbank to shortly reach an open area. Bear left here, past the old mill, to follow the road (METH/22), passing round a gate, E uphill, and then SE, for about 0.5km to



*The upper weir on the River Almond*

reach the Almondbank to Pitcairn Green road. Turn right here to take the pavement downhill back to the centre of Almondbank.

Refreshments are available at the Pitcairn Green Inn. See [www.pitcairngreeninn.co.uk](http://www.pitcairngreeninn.co.uk)

## 50.2. Bertha Park to Pitcairngreen and Almondbank Circular

CPPM 50 OS 53 PP In Bertha Park near the school.

50.2. Bertha Park to Pitcairngreen and Almondbank Circular



Walk W back towards the roundabout at the entrance to Bertha Park and cross it to take the road towards the new housing estate to shortly bear left onto a farm track (LUNC/113) and follow it all the way to a thin stand of woods. Bear right to follow a vague path into and through the woods to then cross a field for a short distance. Turn right at the signpost to follow the path N for a short distance to another signpost. Turn left to follow the path into Pitcairngreen. Retrace your steps to the first signpost (near the W end of the stand of woods) and follow the signed path (METH/28) S, then SE along a high embankment (Note 1), and then W into Almondbank. On reaching the riverbank bear left to take a road SSE (part of the cycle route) to cross a foot bridge over the River Almond. Follow the cycle route and path (METH/2) round the side of the industrial estate and then along the riverbank to join TULL/2 and follow it all the way to an underpass at the bridges over the River Almond near its junction with the River Tay. Turn left to cross the River Almond and then bear left onto LUNC/113. Go uphill to just past a cottage to turn left onto a tarmac track (revised route-not shown on core path map) and follow it round to emerge at Bertha School.

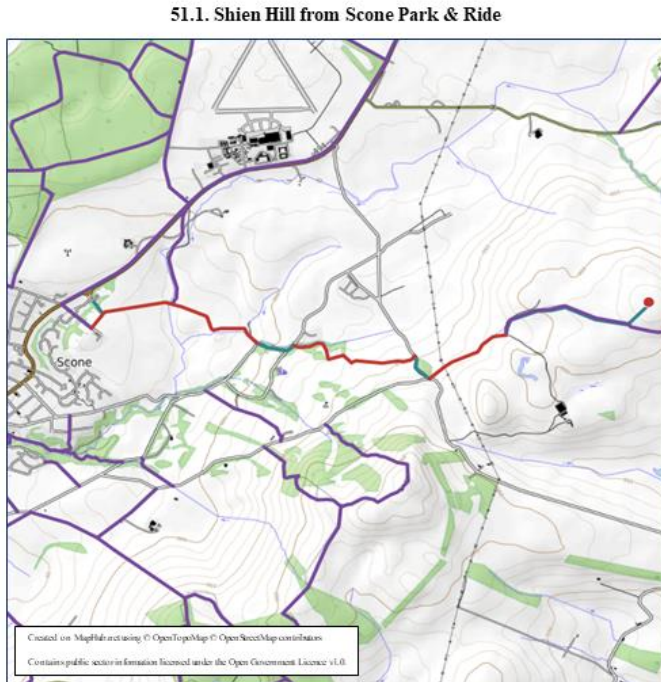
Note: - (1) There is a path on the N bank of the River Almond which can be followed by diverting down a path from the high embankment, referred to above, into a small glen with a burn. Cross the burn at a suitable point (avoid the makeshift bridge) to reach the N bank of the river Almond. Follow the path ESE along the banks of the River Almond to reach a field crossed by large pylons. Turn left here to follow the line of the fence to meet a track. Follow the track uphill, past a cottage to meet a tarmac track (LUNC/113-revised route) and follow it back to the car.

Refreshments are available at the Pitcairngreen Inn. See [www.pitcairngreeninn.co.uk](http://www.pitcairngreeninn.co.uk)

Perth and Scone offer a large number of walk options using core paths. Many of them can be begun at the North Inch in Perth, Quarrymill car park at Scone, or Kinnoul Hill car park in Perth. Three examples of possible longer walks are set out below.

### 51.1. Shien Hill from Scone Park & Ride

CPPM 51 OS 53 PP At Scone Park & Ride at the NE corner of Scone.



Walk up the track (for Balgarvie farm) at the SE corner of the Park & Ride for a short distance to turn left at the junction and follow the track (SCON/9) all the way round and uphill to reach the minor road near an entrance to Murrayshall Golf Course. Turn left up the road and, after a very short distance turn right off the road, at the burn, onto an unsigned track (SCON/15) parallel to, and on the S side of, the burn. Follow this track all the way uphill to the minor road. Turn right up the road for a short distance to a road junction. Turn left here to pass through a gate onto a farm track (ITUR/50) and follow this, through two gates to bear left at the junction of tracks and head for Shien Hill. Turn left off the track just before the wooded summit to follow the slope up to the large summit cairn. Retrace your steps to Scone Park & Ride.



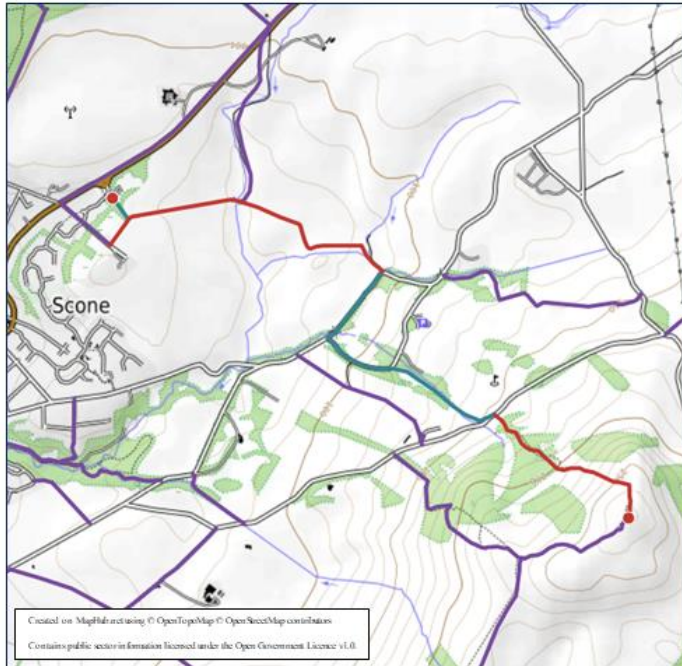
*Shien Hill from the SW*

Note: - ITUR/50 potentially continues to Pole Hill but this continuation does not appear to be currently viable because of barbed wire obstacles and no obvious route on the hillside.

## 51.2. The Lynedoch Monument from Scone Park & Ride

CPPM 51 OS 53 PP At Scone Park & Ride at the NE corner of Scone.

51.2. The Lynedoch Monument from Scone Park & Ride



Walk up the track (for Balgarvie farm) at the SE corner of the Park & Ride for a short distance to turn left at the junction and follow the track (SCON/9) all the way round and uphill to reach a road near an entrance to Murrayshall Golf Course. Turn right along the road and walk along to the entrance to Murrayshall. Turn left here to walk up the drive almost to the hall. Turn right at a marker post (red band and red arrow) to follow a track which winds up through the woods and the golf course, via a series of marker posts, to reach the minor road. Turn left to walk a short distance along the road to turn right and pass through a gate at a signpost onto SCON/50. Follow the path uphill to cross a track and continue steeply uphill to the crest. Turn right here to walk up to the obelisk (Lynedoch Monument). Retrace your steps to the Park & Ride or (not walked) continue to the adjacent Monument then NW down to the minor road to turn right for a short distance. Turn left onto SCON/7 and follow this down to the minor road to turn right and retrace your steps to Scone Park & Ride.

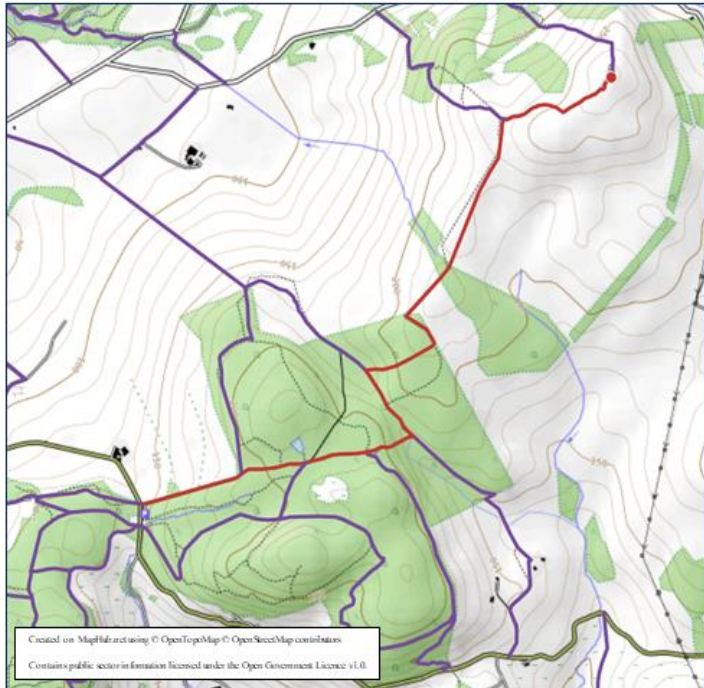


*Scots Pine Avenue at Murrayshall*

### 51.3. The Lynedoch Monument from the Kinnoull Hill Car Park

CPPM 51 OS 53 PP On the hill at the NE corner of Perth at the Kinnoull Hill car park.

51.3. The Lynedoch Monument from the Kinnoull Hill Car Park



Walk up the track approximately ENE from the car park and through the woods to join up with WCAR/55. Turn left here to follow WCAR/55 for a short distance to turn right onto SCON/116 and follow this all the way to the monument and the obelisk (Lynedoch Monument). Retrace your steps to the car park.



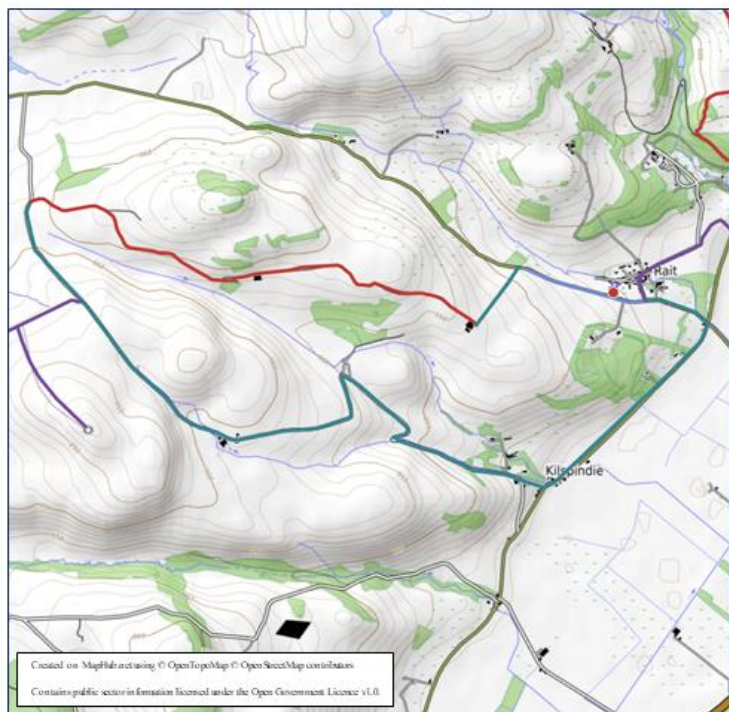
*The Lynedoch Monument (Obelisk)*



## 52.1. Rait NW Circular

CPPM 44, 51, 52, OS 53 PP: Rait Antiques Centre (café).

52.1. Rait NW Circular – mostly on public roads



Walk up the road to turn left onto ITUR/1, i.e. the road for Gasconhall Farm (signed for the footpath). Walk up to the farm to turn immediately sharp right and follow the track uphill to pass through a gate onto open fields. Follow the edge of the trees uphill to eventually reach another gate. Pass through the gate and follow the track for a short distance to turn right through a gate opening and then immediately left to

follow the farm track through Shanry farmyard and all the way, slightly uphill, to reach the minor road. There are two options here: - Option 1: - Turn right here to follow the road to the junction. Turn right at the junction to follow the Rait road SE for about 1 km to the start of the descent. (It is possible to pass through a gate here to follow a track through gorse, then a path, onto the moor to get a view over the River Tay). Continue down the hill to Rait and the parking spot. Option 2: - Turn left to take the road for Kilspindie. and walk down the road (a diversion right at the top of the hill to take in Pole Hill and the iron age fort is

possible), passing Evelick Castle, all the way to Kilspindie Take the short-cut down the short track on the left by the church to the road. Turn left to walk along the road and back to the car.

Note: - If this walk is begun at a small lay-by on the Kilspindie road, at the junction of the Kilspindie and Rait roads at the top of the hill, then the café at the Rait Antiques centre could provide a suitable “half-way” point with the walk route being adjusted to suit.

See [www.raitantiquescentre.co.uk](http://www.raitantiquescentre.co.uk) regarding parking (for patrons) and café.



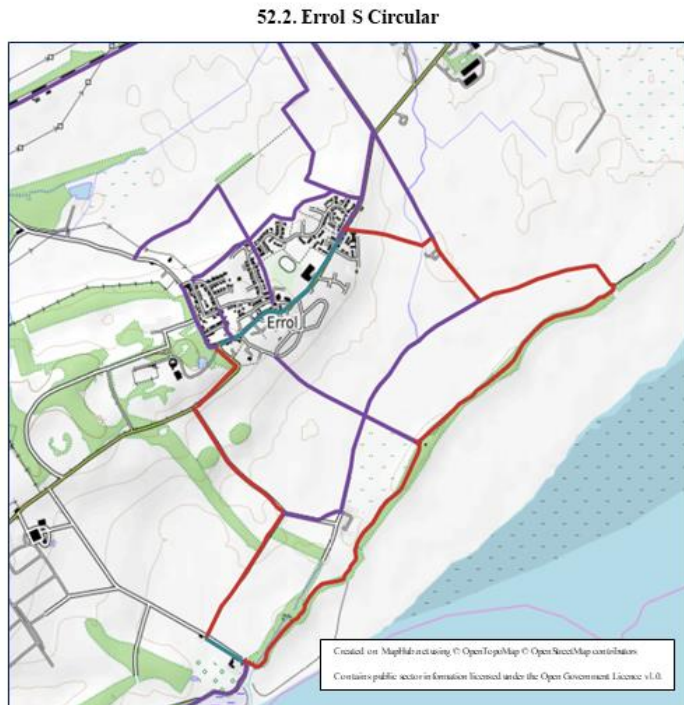
*The view SE from the moor to the River Tay*



*Evelick Castle*

## 52.2. Errol S Circular

CPPM 52 OS 53 PP: In the centre of Errol.



Walk NE up the main street to the edge of the town to turn right and take EROL/112 SE to join EROL/111 and follow this track to join EROL/104. Turn left to follow EROL/104 down to the riverside. Turn right to follow EROL/100 then EROL/3 along the riverside to Port Allen. Turn right here to walk NW up the road for a short distance to turn right onto EROL/106 and follow this to join EROL/105. Turn left here to follow EROL/105 up to the road (EROL/124). Turn right here to follow the road back into Errol.



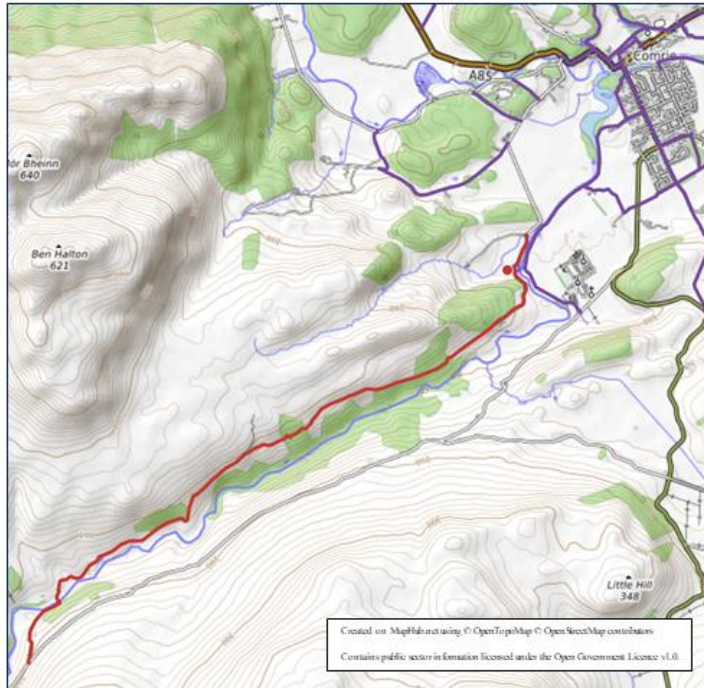
*Reed Beds on the River Tay*

Note: - (1) It is possible to have a longer walk by continuing along the riverbank on EROL/1. (2) The riverbank can be flooded at times, when it should not be attempted. (3) The reed beds are dangerous and should not be entered.

## 55.1. Glen Artney from Comrie

CPPM 53, 54, 55 OS 57 PP In the small car park at the bend in the minor road on the W side of the Water of Ruchill.

55.1. Glen Artney from Comrie



Walk along the road and then follow the track (CMRI/13) uphill as it wanders through the glen for some distance to eventually reach the minor road in Glen Artney (top section not walked). Retrace your steps to the car park.

Note; - (1) This walk could be greatly extended by walking up the minor road to take CMRI/57 which eventually leads through to Callander.

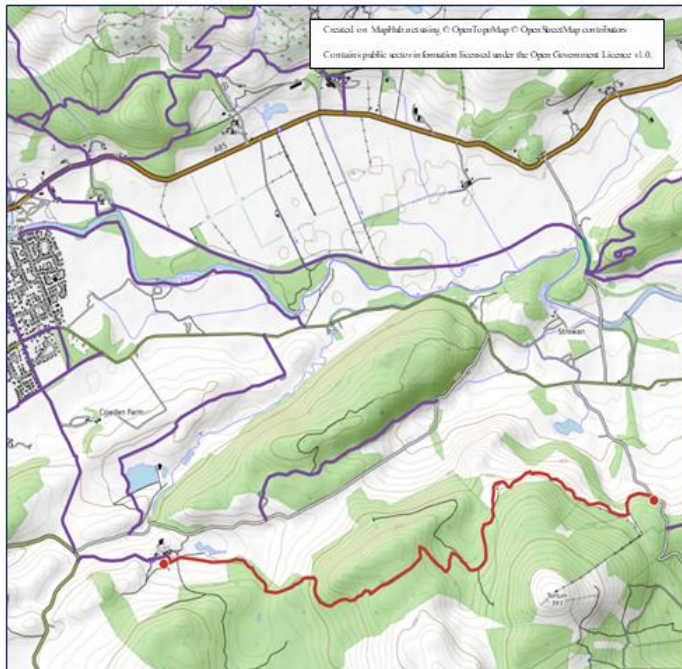


*The Upper Track in Glen Artney*

## 55.2. Torlum Wood-Auchingarrich Circular

CPPM 47, 48, 55 OS 57 PP In the small car park above Upper Strowan, at the start of the walk, on the minor road to Balloch.

55.2. Torlum Wood-Auchingarrich Visitor Centre



Pass through the style and take the signed forestry track (CMRI/104) W into the forest and follow it as it winds its way gently upwards and round, past the mobile phone mast, and through the forest, following the arrowed posts and taking the left fork just past the Glascorrie burn. Continue along a straight stretch of track, at the highest section of the path, for about 0.5km to turn sharp right (NW) off the track onto a signed path into the heart of the forest. Follow this path steeply down (take care it is covered in many tree roots) and round to emerge through a gate at the edge of the forest. Take the signed path left (W) just ahead to follow a rough and muddy path down and round the hillside to reach a burn. Turn right here, as signed, and follow the path down into the Auchingarrich Wild Life Centre. Turn left onto the track through the park and walk up to the Visitors Centre for refreshments. Continue W from the Visitors Centre to reach the B827 to turn sharp right to take the minor road to Glentarf and Glascorrie (Note 1) and follow it (ENE) all the way down to the Crieff to Comrie back road (dangerous road). Turn right to follow this road back (E) to the signpost for Balloch. Turn right up the Balloch road and climb the hill to reach the car park.



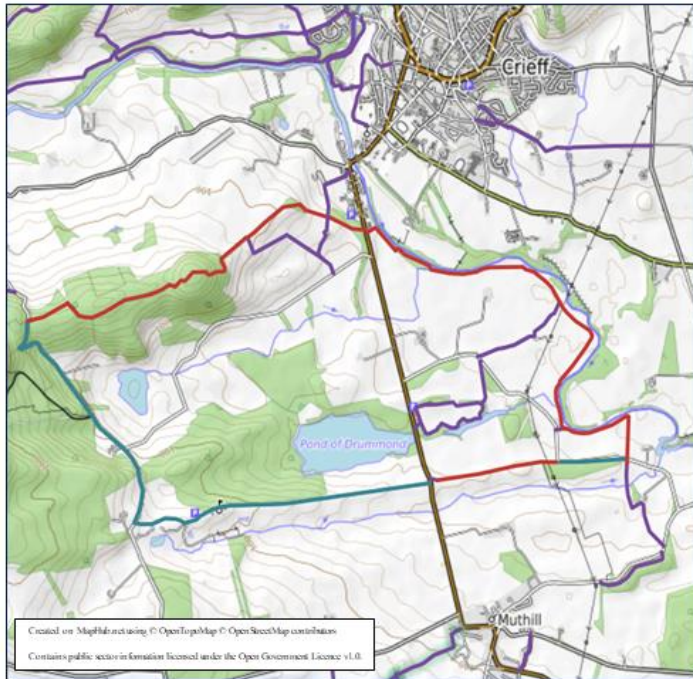
*The view NW to the Melville Monument, Comrie, from Auchingarrich*

Note: - (1) At about 0.5km along this road there is the option to avoid walking on the road by turning left onto CMRI/101 which leads through the forest to eventually return to the minor road. Refreshments are available at Auchingarrich Wildlife Centre. See [www.auchingarrich.co.uk](http://www.auchingarrich.co.uk)

## 56.1. Crieff Visitor Centre-Drummond Castle-River Earn Circular

CPPM 55, 56 OS 57, 58 PP: At Crieff Visitor Centre (patrons only).

56.1. Crieff Visitor Centre-Drummond Castle-River Earn Circular



Take the S entrance out of the car park to, very briefly, walk along the road verge (A822-dangerous) to turn immediately sharp right at the faded signpost and head up into the wood (MUTH/51) in an NW direction. Leave the wood at a signed gate to continue NW across a field to cross a style and follow the line of the trees NW to turn left across a style and head WSW (MUTH/109) through the woods to enter a field at a gate. Bear right then left to continue WSW to the gate to Knock Mary. Pass through the gate to bear left initially and then right to ascend Knock Mary. Follow the track across the crest and then down the other side to pass through an open gate and follow the track WSW down through more open ground then up into the woods to, at the right-hand bend in the track, continue WSW on a shortcut path to reach the minor road. Turn left along the minor road to follow it SE for some distance to reach the entrance to Drummond Castle grounds. Turn left here to enter the grounds and follow the road, past the car park and toilets, to the castle. (The gardens are very well worth a visit-see <https://www.drummondcastlegardens.co.uk>). Continue past the castle and along the very long driveway to eventually reach the A822. Cross the A822 (dangerous) to follow the track immediately opposite (MUTH/130) for some distance to reach a minor road. Continue E

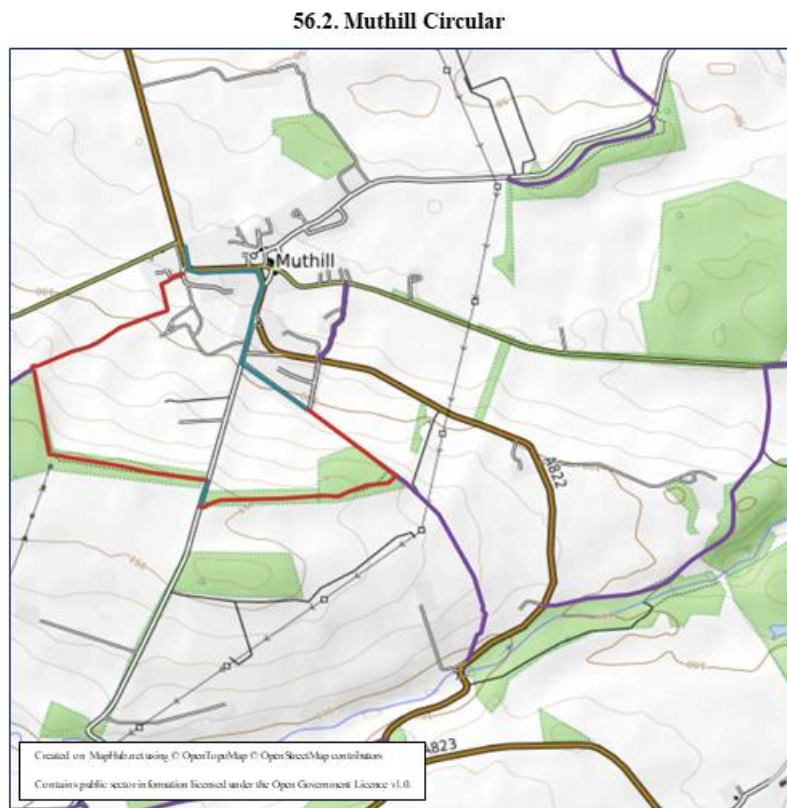


*View of the SW corner of Drummond Castle Gardens*

along this road for about 0.25km (although if preferred a short cut can be taken by turning left down the road to Temple Mill to reach the River Earn there) to turn left onto MUTH/101. Walk down to the riverbank to turn left to follow the riverbank for some considerable distance (MUTH/100) all the way back to the A822. Cross the road to return to Crieff Visitor Centre. Refreshments are available at Crieff Visitor Centre-see <https://crieff.co.uk>. Toilets and a picnic area are available at Drummond Castle.

## 56.2. Muthill Circular

CPPM 56 OS 58 PP: At the W end of Muthill in a parking area beside the playing fields and recycling bins, just before the 30mph sign, on the R side of the road heading N.



*The ruins of Culdees Castle*

Cross the road to walk S along the pavement to the corner of the road to take the minor road straight ahead then immediately turn right into a cul-de-sac to take the path (MUTH/140) between a hedge and the fence to enter a field. Cross the field diagonally SW to enter the golf course. Walk SW along a fence for a short distance to cross over the fairway (wait for golfers) and reach the corner of a forest beside a wall. Take the signed path (MUTH/2), behind the wall, S alongside the forest to pass through a gate and immediately turn left to follow the path through a narrow section of open wood to eventually reach the old military road to Muthill. Turn right here for a short distance to then turn left through a gate and enter a signed section of forest (MUTH/122). Follow the path E through the forest to eventually emerge at a track and then immediately cross a style to enter the Muir of Spot Wood (MUTH/122). Follow the path E along the top of the wood to eventually reach a corner in the wood. There are two options here. Option 1: - For a shorter walk turn NW (MUTH/1) to continue along the edge of the wood and emerge onto a field to cross the field NW into Muthill and return to the car. Option 2: - For a longer walk take the signed path (MUTH/1), at the corner of the wood, SE through a field (keeping the fence on your right) to pass through two gates onto rougher ground. Cross through the broken-down wall on the left to turn immediately right and

follow, on rough ground, the vague path SSE, between the wall and the fence on the left, to reach a small gate. Pass through the gate to immediately turn right through a gap in the wall to follow the line of the hedge S into the next field. Head diagonally across this field to reach a style in the hedge beside the A822 (just above Bishop's Bridge). Cross the style (slippery with steep steps on the other side) to turn left and walk NE up the road (dangerous) on the muddy verge to the lodge house on the right at the top of the hill. Turn right at the signpost by the lodge house to pass through the gate (at the left-most entry) to follow the track (MUTH/133) (very wet and muddy) E then NE all the way past the ruins of Culdees Castle to reach a minor road (Station Road). Turn left to walk along the road (cycling and walking friendly but relatively busy) to walk back into Muthill and return to the car.

## 57.1. The Roman Road, from Findo Gask

CPPM 49, 57 OS 58 PP At the village hall car park in Findo Gask.

57.1. The Roman Road, from Findo Gask



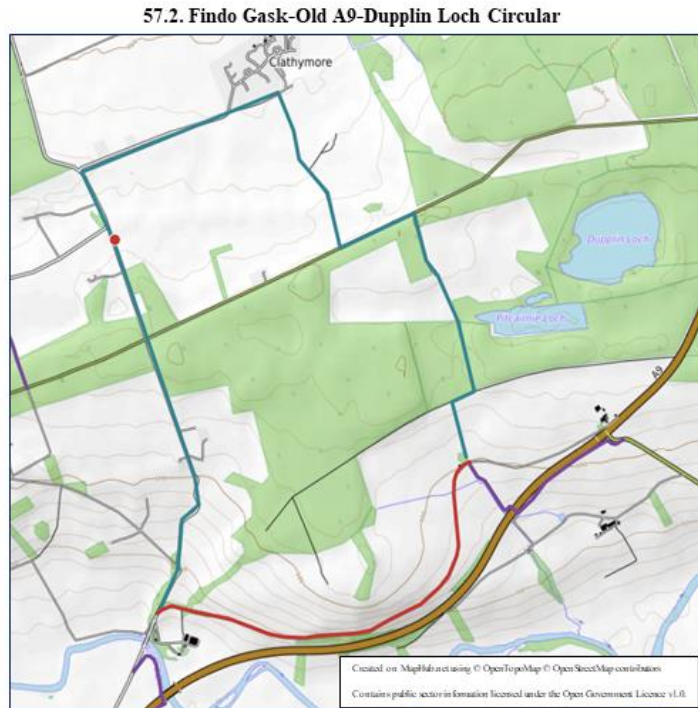
Walk N from the village hall down the road for a short distance to turn left onto the road for Clathy and follow this all the way along, via a short dog-leg, to the road end. Turn left here to follow a signed path (METH/63) S all the way down to the minor road (now overlying the Roman Road). Turn right here to follow the line of the Roman Road (METH/160) (take time to explore two sites for Roman Signal Stations just off the track to the left, over short bridges over the ditch), initially on a good track but subsequently on a winding path on the overgrown middle section, to reach another good track and follow this to reach a minor road. To create a circular walk, turn right here to follow the road down past Roundlaw Farm for some distance to turn right at the signpost onto the road ESTN/117 for Ferneyfold and walk along to reach a T-junction. Turn right here to continue on the Perth & Kinross core path up the hill to take a signed gate on the left near the top of the hill. Follow the track (METH/158) NE to reach another signed gate on the right. Pass through this to immediately take a small, signed, wooden gate on the left to follow a rough path NE along the edge of the field to a clump of woodland. Continue to the top of the woodland to take the track on the left (still METH/158) and follow this round to Drumharvie Farm. Pass through the farmyard to take the road downhill all the way to the “back road” to Crieff. Turn right here along the road (dangerous) and, after a short distance, turn right to take the minor road up the hill all the way back to Findo Gask village hall.



*The remains of Muir O' Fauld Roman Signal Station*

## 57.2. Findo Gask-Old A9-Dupplin Loch Circular

CPPM 57 OS 58 PP At the village hall car park in Findo Gask.



Walk S along the road from the village hall to the road junction. Cross the road and follow the road (which can be busy) SSE all the way down almost to Dalreoch Bridge over the River Earn. A short distance back from the bridge, take the gated old road (METH/162) and follow this all the way round, roughly parallel to the A9, and uphill to reach a junction of tracks just after a cottage. (The right-hand track-EARN/118- leads down to an underpass under the A9). Take the LH hand track uphill to a T Junction of tracks to turn right and then shortly left to follow the track N through two gates and all the way past Blairbell cottage (note that it is possible to follow a track on the right here to visit Pitcairnie and Dupplin Lochs) to the minor road. Turn left here to follow the road for about 0.5km to turn right and follow a track down to Clathymore. Turn left here to follow the avenue to the minor road to turn left and walk S uphill to regain the village hall.



*The view S to the Ochils*



### 57.3. Dunning Circular

CPPM 57 OS 58 PP In the car park beside the playing fields and golf club on the north side of Dunning.

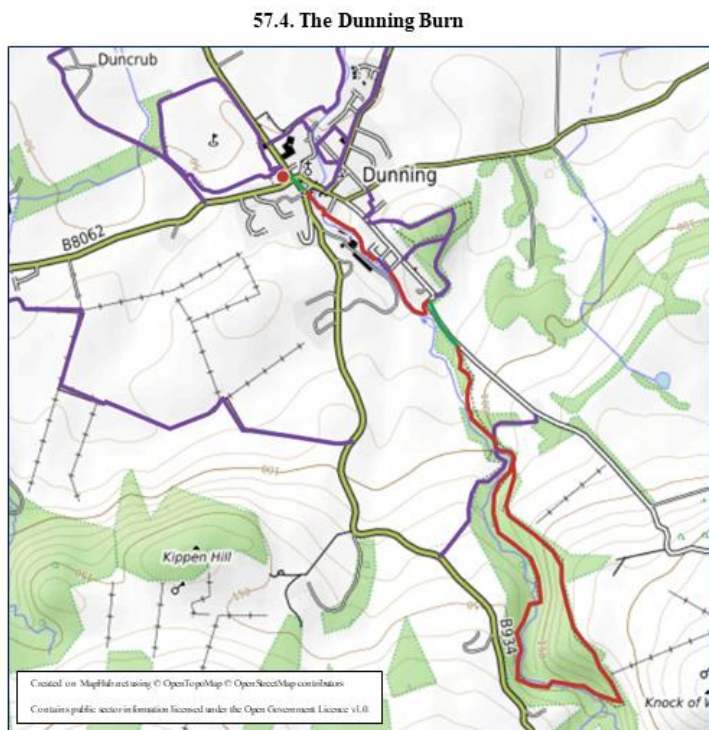
57.3. Dunning Circular



Walk back to the road to turn right and walk up to the road junction, Cross the square diagonally SE to cross the bridge over the Dunning Burn and turn left onto the B934. Continue for about 0.7km to the start of a stretch of woodland to turn sharp left onto DNNG/109 then shortly afterwards right onto DNNG/110. Follow DNNG/110 to eventually turn left onto DNNG/111. Follow DNNG/11 round and across to reach the B9141. Turn right here to walk up the road for a about 0.25 km to turn left onto DNNG/107 and follow this all the way back into Dunning.

## 57.4. The Dunning Burn

CPPM 57, 62 OS 58 PP In the car park beside the playing fields and golf club on the north side of Dunning.



*The Y-junction for the “high road” and the “low road”*

Walk out of the car park to turn right and walk up to the road junction to cross the road into Muckhart Road directly opposite. Walk up this road for a short distance to turn left at the sign by the memorial thorn tree and walk down (DNNG/1) to cross the Dunning Burn at a bridge. Turn right to follow the path beside the burn then round through a grassy area to return to the burn. Then follow the path away from the burn and past some cottages on the left to reach a minor road. Turn right to walk up the road for about 100m to turn right through an empty doorway in an ivy clad wall to return to the Dunning Glen path. Follow this path all the way up alongside the burn (significant erosion) for some distance to a Y-junction. Take the left fork (DNNG/100) to zig-zag steeply up hill to the high-level path (narrow with some erosion and significant exposure to the steep drop-not suitable for those with vertigo) well above the burn. Follow this path through the woods and on the edge of the slope for some distance to come to another junction which indicates the descent path. Descend the zig-zags down the very steep path and very steep steps (no handrail) to return to the lower level (DNNG/100) and the banks of the burn. Follow the track N beside the burn, crossing two bridges to return to the original Y-junction (Note 1) and thence to the car park.

Note: -(1) Just after the Y-junction there is an alternative return route by turning left at the signpost to cross a bridge and climb the path-DNNG/104- to reach the Yetts o’ Muckhart Road. Go down this road to turn left onto DNNG/105 and follow it as it winds downhill to eventually reach the B8062. Go west along this road for a short distance to view the monument and then return E into Dunning and the car.

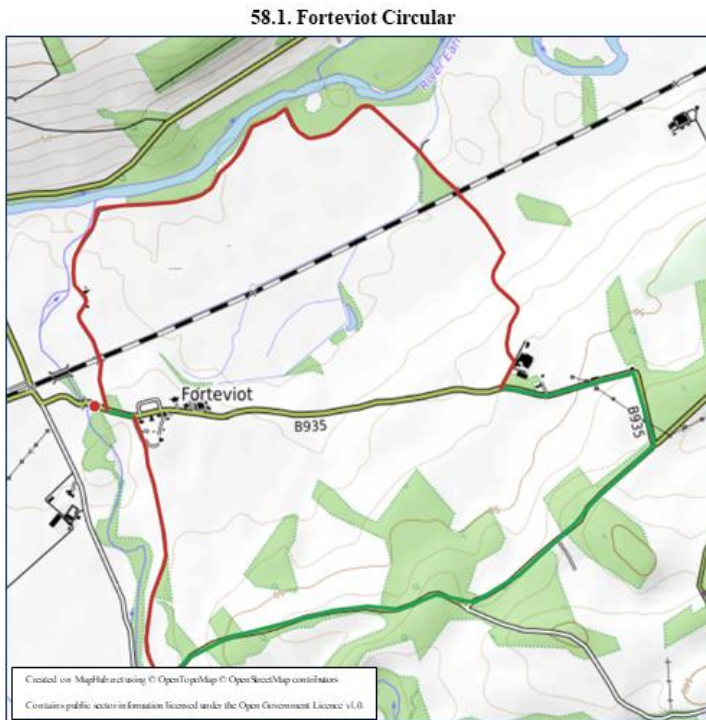
(2) The wild flowers in Dunning Glen, particularly the bluebells, are spectacular in May

Refreshments are available in Dunning at the Hotel, the Golf Club, or the Kirkstyle Inn see e.g. - [www.thekirkstyleinn.co.uk](http://www.thekirkstyleinn.co.uk)

Dunning has a long history see e.g. [www.dunning.uk.net/serf.html](http://www.dunning.uk.net/serf.html) and <https://www.historicenvironmentscotland/visit-a-place/places/st-serfs-church-and-dupplin-cross>. The Dupplin Cross Pictish Stone can be seen inside St Serfs Church in the square in the centre of Dunning.

## 58.1. Forteviot Circular

CPPM 58 OS 58 PP In a small lay-by on the left of the B935 just E of the bridge over the Water of May.



Walk E along the road for a few metres to turn left onto an unsigned track (EARN/126). Follow this track down, over a railway bridge, all the way to the banks of the River Earn. Continue NE on this track then back round over a railway bridge to reach the B935 at Kildinny Farm. Turn left along the road (take care-busy road) and go up the hill and round the dog-leg to reach a junction with a minor road. Turn right to follow this minor road all the way past Netherholm to a house just before the junction of minor roads at Green of Invermay. Turn right here (technically the core path goes through the garden of the house but this can be avoided by passing an adjacent gate into a field) and follow EARN.125 all the way N to the B935. turn left to return to the lay-by. Alternatively follow the minor road from Green of Invermay back to the lay-by.



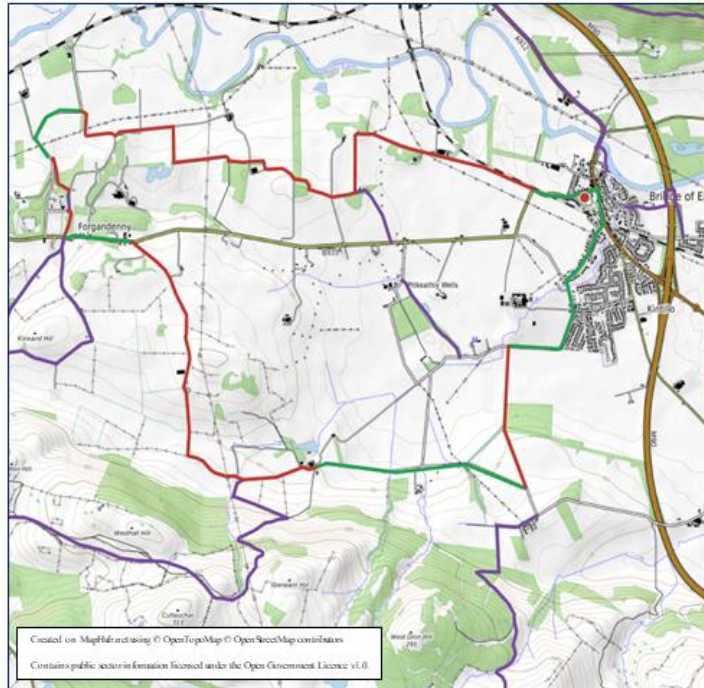
*Wildflower strip by the track along the river Earn, looking NE*

Note: - This route is often flooded near the River Earn when it should not be attempted.

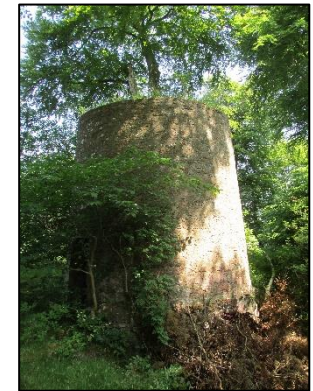
## 58.2. Bridge of Earn-Forgandenny Circular

CPPM 58 OS 58 PP In the centre of Bridge of Earn.

58.2. Bridge of Earn-Forgandenny Circular



Walk out of Bridge of Earn on the Forgandenny Road to cross over the railway and turn immediately right onto a track (EARN/5) initially parallel to the railway. Follow this to Dunbarney to turn left for about 0.25km to turn right onto another track (now EARN/120) and after a short distance reach a T-junction. Cross the track here to enter a field. Follow the path (EARN/120) into the woods and past the old windmill to reach a road. Turn right to follow this road W and, after about 0.5km, take the signed track W and then N to



*Remains of the old windmill*

join EARN/100. After about 0.25km turn left to follow the road SSW through Forgandenny to reach the B935. Turn left here along the road (fast cars) for about 0.5km to reach Eastfield. Turn right off the road here onto EARN/121. Follow this road past South Dumbuils Farm and then past Westhall to reach a signed track going E. Follow this to Glenearn, then continue on the road for about 1.5km to turn left onto EARN/141 and follow this N to the minor road. Turn right to follow the minor road through Kintillo and back to the centre of Bridge of Earn.

### 58.3. Castle Law, Ochils, from Forgandenny

CPPM 58 OS 58 PP In the centre of Forgandenny.

58.3. Castle Law, Ochils, from Forgandenny



Walk along the B935 to turn on to EARN/14 and then immediately afterwards onto EARN/15. Follow EARN/15 S to the woods and up through the woods to reach EARN/12. Turn left onto EARN/12 and follow it E on the track through Culteuchar, across the fields, and then, as a vague path, all the way to Castle Law. (Culteuchar Hill can also be climbed conveniently). Descend Castle Law SE to pick up EARN/131, initially as a path that turns NE to meet a track. Follow this track as it zig-zags down the hillside to eventually meet EARN/121. Turn left here to follow EARN/121 back to Forgandenny.

For a description of Castle Law and its excavations see <https://canmore.org.uk/site/26583/castle-law-forgandenny>

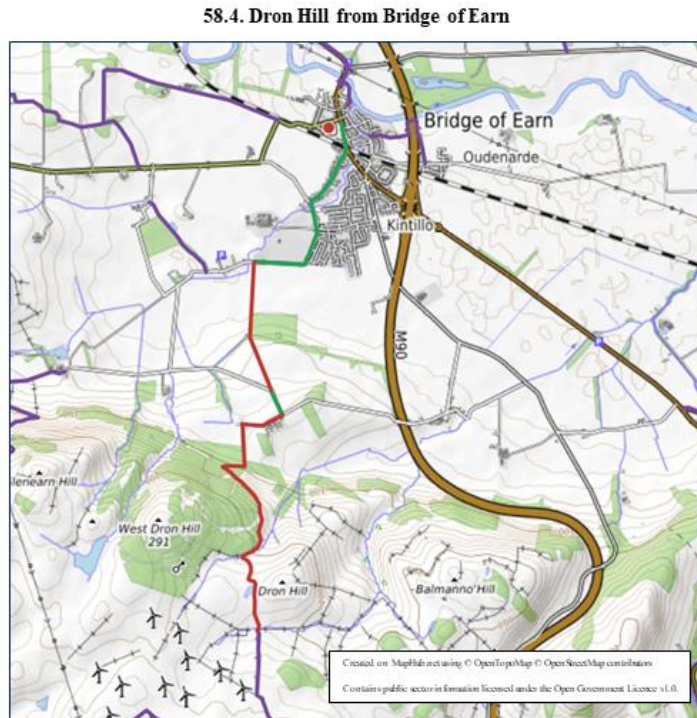
Note: - (1) The shortest route to Castle Law is to park in a very small lay-by just to the W of the start of the southern end of EARN/4 and then follow the minor roads to Glenearn (not the large Glenearn House). Turn left at Glenearn to follow a track S alongside the house to join a track leading WSW to join EARN/131 and hence to Castle Law.



*Castle Law from the path to the SE*

## 58.4. Dron Hill from Bridge of Earn

CPPM 58 OS 58 PP In the centre of Bridge of Earn.



Walk out of Bridge of Earn and through Kintillo to take the minor road to Glenearn. After about 0.5 km turn left onto EARN/141 and follow it to the minor road near West Dron. Walk up the road to turn right onto EARN/1. Follow EARN/1 for a short distance to turn left and follow the track up to the woods and round the edge of the woods to turn left onto the hillside and follow the path all the way up to the high point. Turn left to ascend Dron Hill. Retrace your steps to Bridge of Earn.



*Sign for Wallace's Road*

Note: - (1) This walk can be extended by following GLFG/1 to reach Glenfarg (see Core Path Plan Map 64).

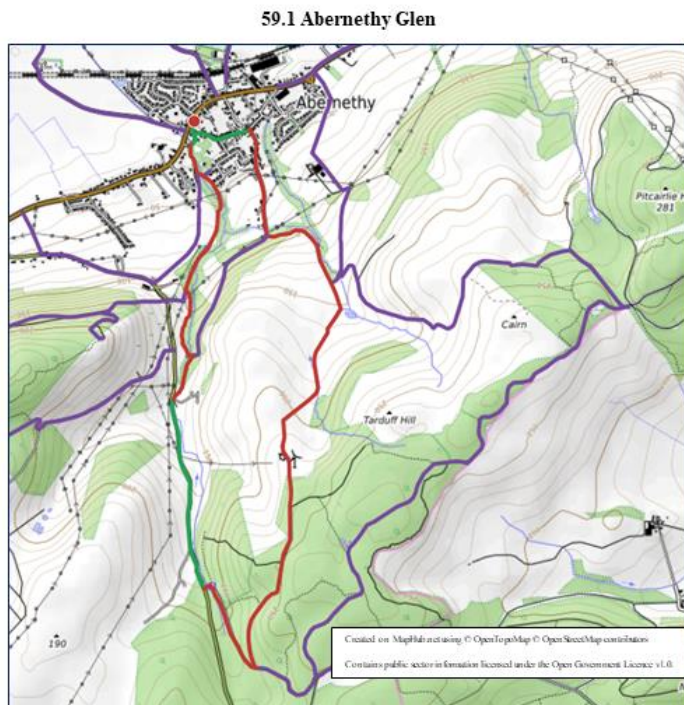
(2) This walk forms part of the Wallace Road, having been used by Sir William Wallace and his army. Sir Walter Scott also rode this route into Perth. He was very impressed by the view N from the path at Dron Hill and it is known as Sir Walter Scott's View. See [www.heritagepaths.co.uk/pathdetails.php?path=7](http://www.heritagepaths.co.uk/pathdetails.php?path=7).

## 59.1 Abernethy Glen

CPPM 59, 64 OS 58 PP In the centre of Abernethy in the public car park behind the Inn (regularly full) or in the side streets, or on the site of the old hotel, near the A913 (alternatively the walk could be started in the forestry car park near the top of road through Abernethy Glen).



*Castle Law, Abernethy  
from the E*



Walk W along the street almost to the junction with the main road to turn up a road at the signpost for the glen. After a short distance turn left off the road to go down to and cross the burn to turn right along the path (ABNY/101) beside the burn. Eventually reach some steep steps leading up, right, to the path above the burn. Turn left at the top of the steps to continue on the path to eventually come to a junction of tracks. (The right-hand option here leads to the track to Castle Law on ABNY/105.) Continue on the left-hand track for a short distance to come to some steep steps down to the riverside and cross the burn on the bridge at the bottom. Turn right up the path to eventually reach the minor road near Craigden. Turn left to take the minor road up the glen for about 0.9km to turn left into the signed pine forest area at a bridge over the burn (car park and tracks busy with mountain bikers). Turn right to follow the forestry track (ABNY/107) for about 0.4km to a junction (Note 1). Turn sharp left here to take the forestry track (ABNY/111) heading N and follow this round and slightly uphill to then descend to Turflundie steading. Pass the main steading building on your left to reach a gate. Pass through the gate to cross a short distance to the next gate. Bear right here to cross the field diagonally (no path) and then more downhill to reach a track coming from Tarduff Hill. Turn left to follow the track (ABNY/112) down to reach a junction of tracks by an overgrown quarry (Note 2). Turn right to follow the road downhill into the centre of Abernethy and turn left to return to the car.

Note: - (1) A longer walk (not walked) can be had by continuing on ABNY/107 round the top of the forest and all the way NE through the forest to reach ABNY/115 and follow it down the hill to Abernethy.

(2) The left-hand branch here follows ABNY/112 to subsequently descend some steep steps to re-join the outward track.

(3) Castle law can also be ascended as an extension to this walk by diverting right from ABNY/101 up to the road to cross the road and follow ABNY/105 to the summit.

Refreshments are available in Abernethy at the Inn-see <https://thecreesinn.co.uk> and the café and tearoom near the Tower.

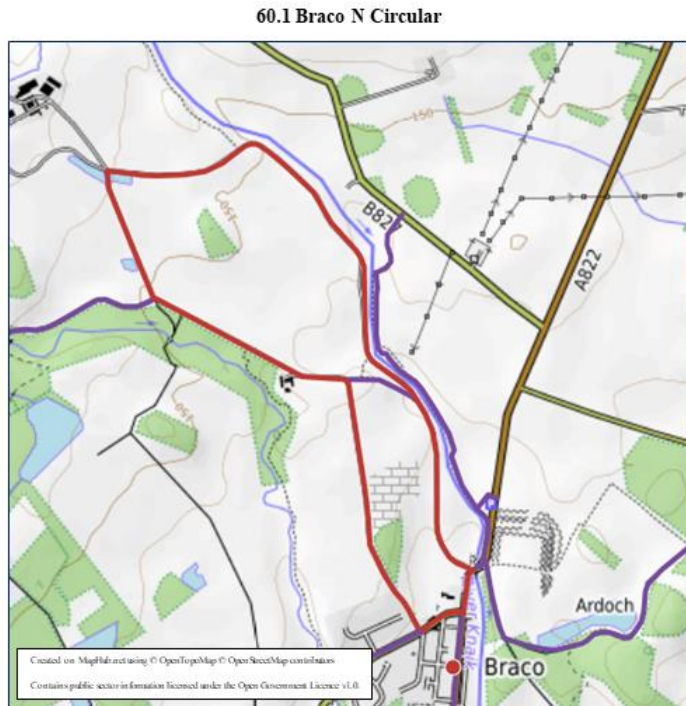
For Abernethy Tower see <https://www.historicenvironment.scot/visit-a-place/places/abernethy-round-tower/>

For Abernethy Museum see [Museum of Abernethy | Abernethy | Scotland | Local Attractions](#)



## 60.1 Braco N Circular

CPPM 60 OS 57, 58 PP There is limited parking in Braco on the S side of the bridge, on the A822, over the River Knaik. Otherwise, park on the main road in Braco.



*The River Knaik near the weir*

Walk N up the A822 for a short distance to cross the bridge, and then the road, to enter the field on the right at the gate to view the extensive remains of the old Roman Fort and Camp at Ardoch. Return to the A822 to cross the road and bridge, and turn right to take BRAC/110 N across a field then alongside the W side of the River Knaik to the weir. Continue to follow BRAC/110 W, now away from the river, and round, past a junction for the castle (gardens open in the summer) and farm, to reach BRAC/111 at a junction. Turn right to follow BRAC/111 W for a distance to suit your walk length then retrace your steps to the junction and continue to follow BRAC/111 SE to the next corner. There, either turn left onto the path which leads back to BRAC/110 or continue to follow BRAC/111 back into Braco.

Note: - Following BRAC/105 SE from Braco is possible but the return on BRAC/114 is alongside the very busy and noisy A822 and is best avoided.

Refreshments are available at the Café on the main road through Braco.

For Ardoch Roman Fort see: - [portal.historicenvironment.scot/designation/SM1601](http://portal.historicenvironment.scot/designation/SM1601)

## 61.1 The old Railway Track, Auchterarder

CPPM 56, 61 OS 58 PP In a small lay-by on the W of the road just past East Hill, on the road from Auchterarder to Tullibardine Chapel.

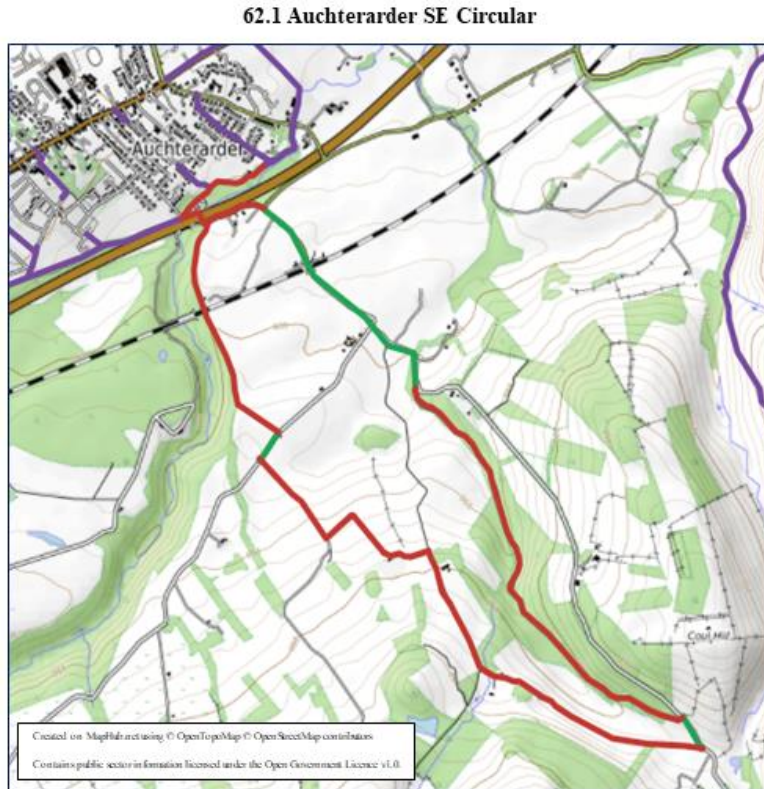
61.1 The Old Railway Track, Auchterarder



Walk NW along the road for a short distance to, just past the gas pipeline service enclosure, turn right off the road at the signpost onto the old railway track. Turn left to follow the path (MUTH/124) all the way to the minor road. Bear right, then immediately left to cross the road and continue on the old railway track (MUTH/129), for about 1km, to where the track turns left. Continue straight ahead on an overgrown path all the way to the farm track at Farnton. Turn right here to walk to the minor road. Turn left to walk up the minor road for about 0.5km to a road junction. Turn left here then shortly turn right to return to the old railway track (MUTH/128) to walk to the minor road at Caerlaverock. Retrace your steps. (Note: Top section not walked.)

## 62.1 Auchterarder SE Circular

CPPM 62 OS 58 PP In the centre of Auchterarder.



Walk along the main street to turn S down the side streets to pick up AUCH/1 by the banks of the burn, parallel to the A9. Walk ENE along the path to cross the burn and pass under the A9 at the underpass. Bear right to follow AUCH/10 up over the railway bridge and alongside the woodland to reach a minor road. Turn right here to walk along the road for a short distance to turn left up the hill (AUCH/123) and follow the track and paths all the way round to reach Foswell House. Continue right, on AUCH/123, up the hill and through the fields on a vague path to reach a minor road. Turn left here to go down the road for a short distance to take the track on the left (AUCH/122) (Note: - currently affected by forestry operations) all the way downhill to return to the minor road. Follow the minor road downhill to cross the junction and subsequently the railway bridge to reach another road junction. Bear left here to return to the underpass under the A9 and return to the car park.



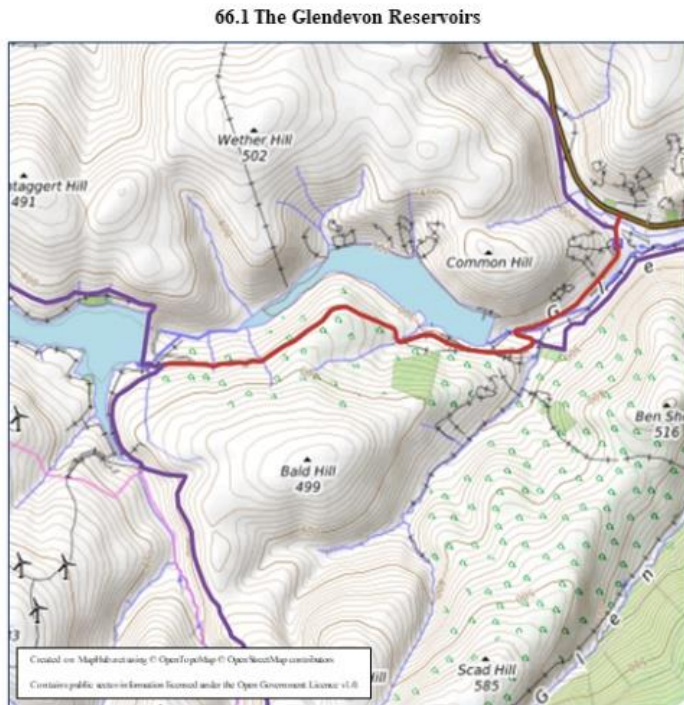
*The view north over Auchterarder to the Crieff Hills*

Refreshments are available in Auchterarder.

## 66.1 The Glendevon Reservoirs

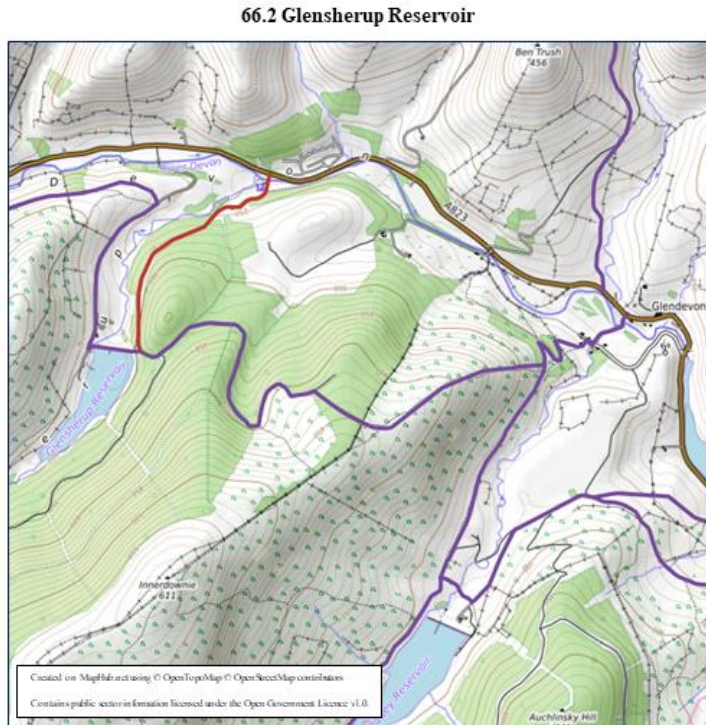
CPPM 65, 66 OS 58 PP There is parking just off the A823 at the corner at the top of the hill on the A823 just before Glenhead Farm.

Follow the track (BLFD/105) SW to reach the lower Glendevon reservoir. Bear left to follow the track (AUCH/113) along the S side of the reservoir to reach the Upper Glendevon Reservoir. Retrace your steps to the car park.



## 66.2 Glensherup Reservoir

CPPM 66 OS 58 PP There is a signed parking and picnic area just off the A823 at the start of the route.



Walk SW from the parking area to take the track (AUCH/150) all the way to Glen Sherup Reservoir. Retrace your steps.

Note: - (1) This walk can be extended by following AUCH/146 to the left or by turning right to cross the dam and continue on AUCH/150 round towards the Glendevon reservoirs.

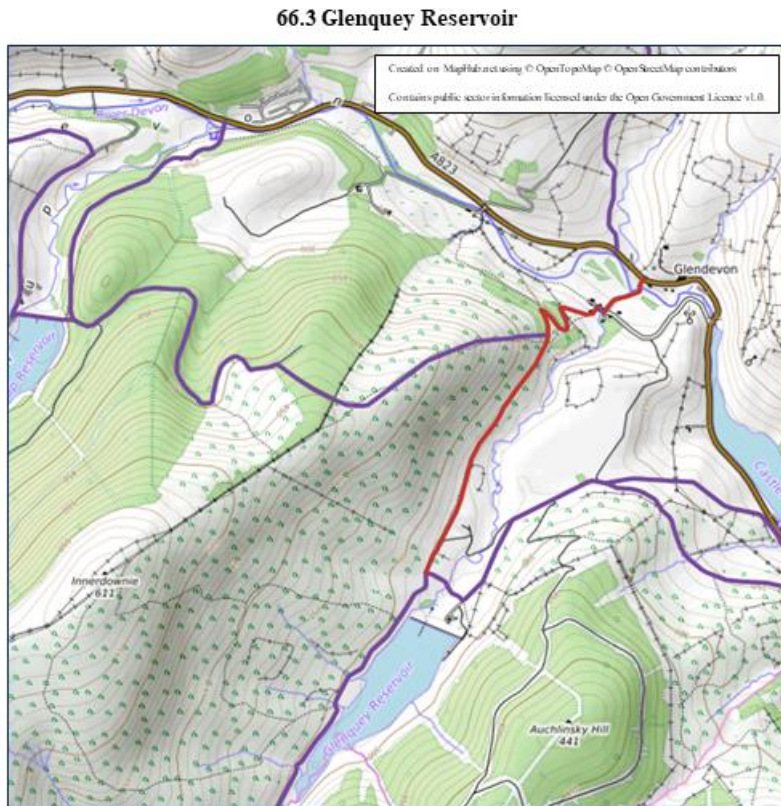
(2) The indicator board at the car park provides additional walks.



*Glensherup Reservoir*

## 66.3 Glenquey Reservoir

CPPM 66 OS 58 PP Near Glendevon.



Follow AUCH/8 from the A823 to the reservoir and beyond, then return. Alternatively, start the walk as for 66.2 above and follow Auch/146 to reach Auch/8 and thence the reservoir.

Refreshments are available nearby at the Tormaukin Inn-see <https://www.thetormaukin.co.uk>

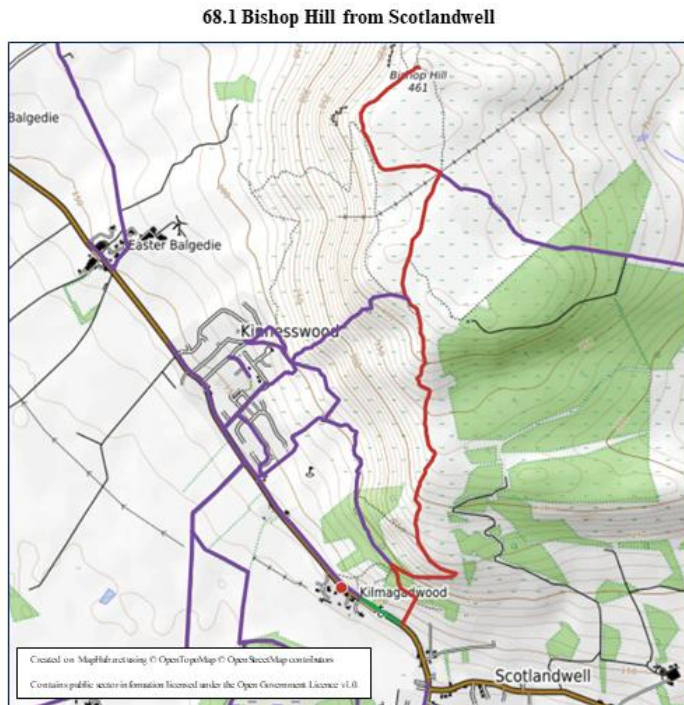


*Castlehill Reservoir from  
Glenquey*

There are many walks in the Kinross and Milnathort area. Most are well known. See e.g. <https://www.pkct.org/loch-leven-heritage-trail> In particular the walking/cycling circuit of Loch Leven is well established and can be started either from the Kinross area or from the bird sanctuary (<https://www.rspb.org.uk/reserves-and-events/reserves-a-z/loch-leven>) at the south end. Loch Leven is an historic area. See e.g. <https://www.visitscotland.com/info/see-do/lochleven-castle-p248431>. Refreshments are available at Loch Levens Larder see <https://www.lochlevenslarder.com>.

## 68.1 Bishop Hill from Scotlandwell

CPPM 68 OS 58 PP In the car park near the church in Scotlandwell, just off the A911, just before you enter Scotlandwell from the N.



Walk SE along the road for a short distance to turn left onto the signed path (PTMK/118) and follow the steep steps, then the steep hillside, uphill to bear right onto PTMK/12 and continue steeply uphill, then along the ridge, to the summit of Bishop Hill. Retrace your steps. Alternatively return by following PTMK/11 steeply downhill to the edge of Kinnesswood then bear left onto PTMK/3 along the hillside to take a left fork onto PTMK/118 to return to your starting point



*Loch Leven from Bishop Hill*

### 3. Index to the Walks

| <b>Walk No.</b>  | <b>Page No.</b> |
|--|-----------------|
| 11.1. Killiecrankie to the River Tummel Circular                             | 7               |
| 11.2. Killiecrankie-Craig Fonvuick-Killiecrankie Pass Circular               | 8               |
| 11.3. Moulin to Craigower Circular   | 9               |
| 19.1. Pitlochry SW Circular  | 10              |
| 23.1. Aberfeldy to Castle Menzies and Weem Circular                          | 11              |
| 24.1. Birks of Aberfeldy   | 12              |
| 24.2. Grandtully to Aberfeldy on the Old Railway Track                       | 13              |
| 24.3. Castle Dow   | 14              |
| 25.1. Loch Ordie from Guay   | 15              |
| 27.1. Den of Alyth and Hill of Alyth   | 16              |
| 29.1. Kenmore-Banks of the River Tay   | 17              |
| 29.2. Kenmore-Falls of Acharn Circular                                       | 17              |
| 30.1. Forest Walk at Loch na Craige on the A826 about 5km south of Aberfeldy | 18              |
| 31.1. River Tay Circular from Dunkeld  | 19              |
| 31.2. The Glack Circular from the Cally Forest Car Park, Dunkeld             | 20              |
| 31.3. Dunkeld-Loch of the Lowes Circular                                     | 21              |
| 32.1. Inchewan Burn-Rumbling Bridge-Hermitage Circular from Birnam           | 22              |
| 32.2. Birnam Hill from Birnam  | 23              |
| 32.3. Loch of Butterstone to Loch Ordie                                      | 24              |
| 32.4. Caputh NW Circular   | 25              |



## **Index to the Walks (cont.)**

### **Walk No.**

### **Page No.**

|   |    |
|---|----|
| 32.5. Caputh E Circular                             | 26 |
| 33.1. Knockie Path & Ardblair Trail, Blairgowrie    | 27 |
| 33.2. Old Military Road, Blairgowrie                | 28 |
| 33.3. River Ericht, Blairgowrie                     | 29 |
| 33.4. River Isla and Coupar Angus E Circular        | 30 |
| 34.1. Newtyle to Meigle Circular                    | 31 |
| 37.1. Loch Freuchie Circular                        | 32 |
| 38.1. Little Glenshee Circular                      | 33 |
| 39.1. Buffalo Hut and Stair Bridge, Birnam Hill     | 34 |
| 39.2. Murthly Castle Circular                       | 35 |
| 39.3. Murthly Circular                              | 36 |
| 40.1. Stanley to Ballathie                          | 37 |
| 40.2. Campsie to Cargill along the Banks of the Tay | 38 |
| 40.3. Burrelton NW                                  | 39 |
| 41.1. Lundie Crags                                  | 40 |
| 42.1. Dalcrue NW                                    | 41 |
| 43.1. Battleby N Circular                           | 42 |
| 43.2. Bertha Park to Luncarty                       | 43 |
| 43.3. Scone Racecourse to Waulkmill                 | 44 |
| 43.4. Waulkmill to Cambusmichael                    | 45 |

## **Index to the Walks (cont.)**

### **Walk No.**

### **Page No.**

|  |    |
|--|----|
| 43.5. Guildtown E Circular to St Martins and Wolfhill                        | 46 |
| 44.1. Balbeggie to Wolfhill  | 47 |
| 44.2. Kirkton of Collace, S Circular   | 48 |
| 44.3. Macbeth's Castle, Dunsinane Hill                                       | 49 |
| 44.4. Kinnaird NW Circular   | 50 |
| 46.1. Glen Tarken Circular   | 51 |
| 47.1. Dalchonzie to St Fillans on the Old Railway Track                      | 52 |
| 47.2 The Maam Road, the Melville Monument, and the Deil's Cauldron Circular  | 53 |
| 47.3 Balmuick and Laggan Wood Circular                                       | 54 |
| 47.4 Comrie to Breafordie Circular (with a possible extension to Carn Chois) | 55 |
| 47.5 Water of Ruchill and River Earn Circular via Auchingarrich              | 57 |
| 48.1 Crieff to Comrie on the Line of the Old Railway Track                   | 59 |
| 48.2 Crieff to Gilmerton Circular  | 60 |
| 48.3 Crieff to The Glenturret Distillery and Macrosty Park Circular          | 61 |
| 49.1 Madderty to Fowlis Wester   | 62 |
| 50.1. Almond Bank/River Almond NW Circular                                   | 63 |
| 50.2. Bertha Park to Pitcairngreen and Almondbank Circular                   | 64 |
| 51.1. Shien Hill from Scone Park & Ride                                      | 65 |
| 51.2. The Lynedoch Monument from Scone Park & Ride                           | 66 |
| 51.3. The Lynedoch Monument from the Kinnoull Hill Car Park                  | 67 |
| 52.1. Rait NW Circular   | 68 |

## **Index to the Walks (cont.)**

### **Walk No.**

### **Page No.**

|   |    |
|---|----|
| 52.2. Errol S Circular  | 69 |
| 55.1. Glen Artney from Comrie                                   | 70 |
| 55.2. Torlum Wood-Auchingarrich Circular                        | 71 |
| 56.1. Crieff Visitor Centre-Drummond Castle-River Earn Circular | 72 |
| 56.2 Muthill Circular   | 73 |
| 57.1. The Roman Road, from Findo Gask                           | 74 |
| 57.2. Findo Gask-Old A9-Dupplin Loch Circular                   | 75 |
| 57.3. Dunning Circular  | 76 |
| 57.4. The Dunning Burn  | 77 |
| 58.1. Forteviot Circular  | 78 |
| 58.2. Bridge of Earn-Forgandenny Circular                       | 79 |
| 58.3. Castle Law, Ochils, from Forgandenny                      | 80 |
| 58.4. Dron Hill from Bridge of Earn                             | 81 |
| 59.1 Abernethy Glen   | 82 |
| 60.1 Braco N Circular   | 84 |
| 61.1 The old Railway Track, Auchterarder                        | 85 |
| 62.1 Auchterarder SE Circular                                   | 86 |
| 66.1 The Glendevon Reservoirs                                   | 87 |
| 66.2 Glensherup Reservoir                                       | 88 |
| 66.3 Glenquey Reservoir   | 89 |
| 68.1 Bishop Hill from Scotlandwell                              | 90 |