

# THIS IS A CONSULTATION DOCUMENT



## PERTH & KINROSS COUNCIL

### EDUCATION AND CHILDREN'S SERVICES

#### PROPOSAL PAPER

##### **This Proposal is to:**

- **Establish a new primary school on a preferred site at Bertha Park, Perth;**
- **Establish a catchment area for the new primary school;**
- **Amend the catchment areas of Ruthvenfield Primary School, Pitcairn Primary School, Luncarty Primary School and Tulloch Primary School;**
- **Establish the transfer arrangements for directly affected primary pupils to attend secondary school; and**
- **Establish interim admission arrangements for Ruthvenfield Primary School until the new primary school opens in August 2026.**

This document has been issued by Perth & Kinross Council for proposal in terms of The Schools (Consultation) (Scotland) Act 2010.

Any Ordnance Survey map data included within this document is provided by Perth & Kinross Council under licence from Ordnance Survey in order to fulfil its public function in relation to this public proposal. Persons viewing this mapping should contact Ordnance Survey Copyright for advice where they wish to licence Ordnance Survey mapping data for their own use.

## **AFFECTED SCHOOLS**

The following schools are directly affected by this proposal document:

- **Luncarty Primary School**
- **Pitcairn Primary School**
- **Ruthvenfield Primary School**
- **Tulloch Primary School**

## **DISTRIBUTION**

A copy of this document is available on the Perth & Kinross Council website: [www.pkc.gov.uk](http://www.pkc.gov.uk)

A link to an electronic version of this document will be provided by letter to:

- The parents of the pupils and children who may attend any of the affected schools
- Parents of children expected to attend any of the affected schools within 2 years of the date of publication of this proposal document
- The teaching and ancillary staff at all of the affected schools
- The trade union and professional association representatives of the above staff
- The Parent Councils (if any) of all the affected schools
- The Community Councils
- Relevant users of all the affected schools
- Elected Members of Perth & Kinross Council
- Lay Members of Lifelong Learning Committee
- The Constituency MSPs and List MSPs covering the Constituency
- The Constituency MPs
- The Executive Director, Communities, Perth & Kinross Council
- Tayside Contracts
- Live Active Leisure
- Education Scotland

This document can be made available in alternative formats or in translated form for readers whose first language is not English. Please apply to Education and Children's Services, 2 High Street, Perth, PH1 5PH by telephone on 01738 476200; or by e-mail: [ECSGeneralEnquiries@pkc.gov.uk](mailto:ECSGeneralEnquiries@pkc.gov.uk)

## **CONSULTATION WITH CHILDREN AND YOUNG PEOPLE**

Pupils will be consulted about the proposal in school in accordance with the Children's Commissioner Guidance and further information about this will be provided to parents/carers.

## **SUMMARY OF PROCESS FOR THIS PROPOSAL DOCUMENT**

### **1. Consideration by the Lifelong Learning Committee**

This proposal document has been issued as a result of a decision taken by the Lifelong Learning Committee of Perth & Kinross Council (Report No [21/136 refers](#)). This process is to seek views on the proposals in this paper.

### **2. Proposal document and supporting Information issued to consultees and published on the Council website**

A link to a copy of this document will be issued to the consultees listed on the preceding page, and it will also be published on the Council website: [www.pkc.gov.uk](http://www.pkc.gov.uk)

### **3. Length of consultation period**

The consultation will open on Monday 16 May 2022. The consultation will thereafter run until close of business on Wednesday 29 June 2022, which includes a period of 31 school days.

### **4. Public meetings**

Two public meetings will be held, the details of which are given on page 5 of this document.

### **5. Involvement of Education Scotland**

When the proposal document is published, a copy will also be sent to Education Scotland by the Education Authority. Education Scotland will also receive a copy of any relevant written representations received by the Authority from any person during the consultation period or, if Education Scotland agree, a summary of them. Education Scotland will further receive a summary of any oral representations made to the Authority at the public meetings which will be held and a copy of any other relevant documentation.

Education Scotland will then prepare a report on the educational aspects of the proposal not later than 3 weeks after the Authority has sent them all representations and documents mentioned above. For the avoidance of doubt, the 3 week period will not start until after the consultation period has ended. In preparing their report, Education Scotland may enter the affected schools and make such reasonable enquiries of such people there as they consider appropriate, and may make such reasonable enquiries of such other people as they consider appropriate.

### **6. Preparation of consultation report**

The Education Authority will review the proposal having regard to the Education Scotland Report, written representations that it has received and oral representations made to it, by any person at the public meetings.

It will then prepare a consultation report. This report will be published in electronic format and will be available on the Council website. Anyone who made written representations to the Authority during the consultation period will also be informed about the report.

The report will include:

- a record of the total number of written representations made to the Authority during the consultation period;
- a summary of the written representations;
- a summary of the oral representations made at the public meetings;
- the Authority's response to the Education Scotland Report as well as any written or oral representations it has received, together with a copy of the Education Scotland Report and any other relevant information, including details of any alleged inaccuracies and how these have been handled; and
- a statement explaining how the Authority complied with the requirement to review the proposal in light of the Education Scotland Report and representations (both written and oral) that it received.

The consultation report will be published and available for further consideration for a period of 6 weeks.

## **7. Decision**

This report, together with any other relevant documentation, will be considered by the Lifelong Learning Committee of Perth & Kinross Council, who will take forward a final proposal no earlier than November 2022.

## **8. Note on corrections**

If any inaccuracy or omission is discovered in this proposal document, either by the Council or any person, the Council must investigate and decide what, if any, action is required. If relevant information has been omitted or there has been an inaccuracy, the Council will then take appropriate action which may include the issue of a correction notice, the publishing of a corrected proposal paper or the revision of the timescale for the consultation period if appropriate. In that event, relevant consultees and Education Scotland will be advised. The Authority must inform the person who made the allegation and what action it has taken.

## **9. Note**

This consultation is being conducted having regard to the terms of the Schools (Consultation) (Scotland) Act 2010.

## **PUBLIC MEETINGS**

Two public meetings will be held to discuss these proposals. Anyone wishing to attend one of the public meetings is invited to do so. The meetings, which will be convened by the Education Authority, will be addressed by the Executive Director (Education and Children's Services), or other senior officers of the Council.

The meetings will be an opportunity for interested parties to:

- Hear more about the proposal
- Ask questions about the proposal
- Have their views recorded so that they can be taken into account as part of the consultation process.

The public meetings are as follows:

**Venue:** Bertha Park High School, Adamson Avenue, Perth, PH1 0AU  
**Date:** Tuesday 31 May 2022  
**Time:** 7.00 pm

**Venue:** Bertha Park High School, Adamson Avenue, Perth, PH1 0AU  
**Date:** Monday 13 June 2022  
**Time:** 7.00 pm

A note will be taken at the meetings of questions and views. This note will be published on the Council website, and a printed copy will be made available upon request.

**PERTH & KINROSS COUNCIL  
EDUCATION AND CHILDREN'S SERVICES**

**THIS IS A PROPOSAL DOCUMENT**

**Proposal:**

That subject to the outcome of this proposal exercise, the Council proposes to:

- establish a new primary school on a preferred site at Bertha Park, Perth with effect from August 2026;
- establish a catchment area for the new primary school;
- amend the catchment areas of Ruthvenfield Primary School, Pitcairn Primary School, Luncarty Primary School and Tulloch Primary School;
- establish the transfer arrangements for directly affected primary pupils to attend secondary school; and
- establish interim admission arrangements for Ruthvenfield Primary School until the new primary school opens in August 2026.

This Proposal Paper should be read in conjunction with the [Options Appraisal](#) as it contains more detail regarding the options considered and rejected along with feedback received during the pre-consultation exercise.

**1. VISION AND STATUTORY RESPONSIBILITIES**

- 1.1 The Council's Corporate Plan identifies the vision of "a confident and ambitious Perth & Kinross with a strong identity and clear outcomes that everyone works together to achieve. Our area will be vibrant and successful; a safe secure and healthy environment: and a place where people and communities are nurtured and supported'.
- 1.2 This strategic approach embraces the vision for our area, our communities and our people as outlined in the Corporate Plan. Our key service priorities support the delivery of our commitments in the Community Planning Partnership's Single Outcome Agreement and Corporate Plan, helping Education and Children's Services to focus on the local outcomes that will achieve meaningful improvements for the area, our local communities and our citizens.
- 1.3 Councils have a statutory duty in terms of the Education (Scotland) Act 1980 to make adequate and efficient provision of school education across their entire area for the current school population and future pattern of demand.
- 1.4 Councils also have a statutory responsibility in terms of the Local Government in Scotland Act 2003 to achieve best value. To achieve best value and optimum efficiency, the organisation of the school estate is therefore kept under regular review, including the need for school provision and other factors, such as altering catchment areas.

- 1.5 The [Schools \(Consultation\) \(Scotland\) Act 2010](#) provides a strong, accountable statutory consultation process that local authorities must apply to their handling of all proposals of major changes to schools. These consultation processes are expected to be robust, open, transparent and fair, and seen to be so. They are also expected to be consistent across Scotland.
- 1.6 [The Education \(Scotland\) Act 2016](#) amends the Standards in Scotland's Schools Act 2000 by adding in new duties to address inequality of outcome. These duties apply in different ways to both Scottish Ministers and Education Authorities. Where the Education Authority is making or implementing strategic decisions about school education, it is required to have due regard to the need to carry out its functions in a way which is designed to reduce inequalities of outcome. This is particularly directed in the Act towards pupils who experience those inequalities through socio-economic disadvantage, but there is also a power to extend the range of pupils who are covered by this duty.

## 2. BACKGROUND

- 2.1 On 22 June 2016, the Council allocated funding for a new primary school within the Composite Capital Programme ([Report No. 16/277 refers](#)). This new primary school is to be built to accommodate pupil numbers from housebuilding within the strategic sites at the north and north west of Perth as it was anticipated that the catchment schools for these strategic sites would not be able to accommodate the projected pupil numbers.

There is a chronology of decisions leading to this report including reports and options appraisals presented to Lifelong Learning Committee in relation to Ruthvenfield Primary School, the School Estate Transformation Programme and the new primary school at Bertha Park. These reports can be read if anyone wishes fuller background information about the background to the decision that a new primary school is required and where that new primary school should ideally be located. These are as follows;

- August 2016 - 'Securing the Future of the School Estate' ([Report No. 16/347 refers](#))
- November 2016 - "Securing the Future of the School Estate – Next Steps" ([Report 16/485 refers](#))
- March 2019 – School Estate Transformation Programme ([Report No.19/94 refers](#))
- September 2019 - "School Estate Transformation Programme Strategic Sites North West/North Perth" ([Report No. 19/240 refers](#))
- 22 January 2020 Lifelong Learning Committee ([Report No. 20/18 refers](#)).
- 25 August 2021 Lifelong Learning Committee ([Report No. 21/136 refers](#)).

### **3. BERTHA PARK AND THE LOCAL AREA**

- 3.1 Bertha Park is an area situated to the North of Perth in the Council Ward of Strathtay. The Bertha Park housing site is bounded to the east by the A9, the Perth to Dunkeld rail-line and the River Tay and to the south by the River Almond. The River Tay and its tributaries, including the River Almond, are designated as Special Areas of Conservation.
- 3.2 There is a 30 year masterplan for housebuilding at the strategic sites of Almond Valley, Bertha Park and Perth West. In the next 10 years, based on the current Housing Land Audit (HLA), it is anticipated that 2512 houses will be built. This is estimated to generate approximately 678 primary school pupils who will need to be accommodated in schools near to where they live. Existing catchment schools will not be able to accommodate projected pupil numbers from housebuilding without the provision of a new primary school and changes being made to their catchment areas.
- 3.3 The primary schools whose catchment areas currently cover the strategic housebuilding sites considered as part of this consultation are Luncarty Primary School, Pitcairn Primary School, Ruthvenfield Primary School and Tulloch Primary School.

### **4. CURRENT SCHOOL INFORMATION**

- 4.1 Ruthvenfield Primary School is a non-denominational school situated in Ruthvenfield on the outskirts of Perth. The school roll as at Census 2021 is 60 pupils. The catchment area currently covers a widespread rural area and is bordered by the Perth By-pass from Broxden to Crieff Road, Huntingtower Castle, Inveralmond Industrial Estate, Almondbank and round to Lochty and over to Blackruthven and Newhouse Farm on the outskirts of Perth City. The current catchment area for Ruthvenfield Primary School sits within the major housebuilding development of Almond Valley. In addition, a part of the Perth West development (the Auld Mart) currently forms part of Ruthvenfield Primary School catchment area. A new housing development site named H319 in the Local Development Plan also forms part of Ruthvenfield Primary School catchment area and is in close proximity to Ruthvenfield Primary School. The catchment area borders the existing Perth City boundary adjacent to Tulloch Primary School's catchment area.
- 4.2 Pitcairn Primary School is a non-denominational school situated in Almondbank on the outskirts of Perth. The school roll as at Census 2021 is 92 pupils. The catchment area covers a rural area and includes the settlements of Lochty, Almondbank and Pitcairngreen. The catchment area is bordered by the primary school catchment areas of Luncarty, Logiealmond and Methven. The current catchment area includes part of the strategic development site of Bertha Park.
- 4.3 Luncarty Primary School is a non-denominational school situated approximately 6 miles North West of Perth, turning off the A9 at the Luncarty signpost. The school roll as at Census 2021 is 122 pupils.



The school is situated in Marshall Road, which is a cul-de-sac. The school's delineated boundary extends to the River Tay in the East, from Ordie Cottage in a North Westerly line to Woodend Farm and South East to Bertha Park which falls within the strategic site for Bertha Park.

- 4.4 Tulloch Primary School is a non-denominational Perth City primary school situated in Gillespie Place, Perth. The school roll as at Census 2021 is 378 pupils. The catchment area covers the Hillyland area of Perth contained by the Crieff Road and Dunkeld Road and stretches to Inveralmond and to the boundary with Ruthvenfield.

## **5. PRESENT CATCHMENT AREA ARRANGEMENTS**

- 5.1 Each primary school has a defined catchment area
- 5.2 Pupils living within these catchment areas are considered to be entitled to attend the designated primary school as an entitled pupil.
- 5.3 Pupils living within the strategic sites are currently designated to attend the existing primary school serving the area in which they live e.g. pupils living in the Bertha Park site are designated to attend Pitcairn Primary School under existing catchment areas.

## **6. EXISTING TRANSFER ARRANGEMENTS BETWEEN PRIMARY SCHOOLS AND SECONDARY SCHOOL**

- 6.1 Parents/carers of children who are transferring to begin secondary school education in the August of any one year receive a letter from Perth & Kinross Council during the month of January offering a place to their child at the secondary school in whose catchment area he/she lives.
- 6.2 The offer of a secondary school place is determined by the child's home address at the time of allocating secondary school places.
- 6.3 Parents who have made a successful placing request for their child to attend a particular primary school other than their catchment school may not be offered a place for their child in the associated secondary school if their home address is not within the catchment area for that secondary school.
- 6.4 If parents/carers do not wish their child to attend the catchment secondary school, they can decide to make a placing request to send their child to another secondary school.
- 6.5 Pupils living within the catchment area of Luncarty Primary School are entitled to attend Perth Grammar School. Pupils living within the catchment area of Pitcairn Primary School are entitled to attend Bertha Park High School. Pupils living within the catchment area of Ruthvenfield Primary School are entitled to attend Bertha Park High School.

Pupils living within the catchment area of Tulloch Primary School are entitled to attend Perth Grammar School.

## **7. EXISTING SCHOOL TRANSPORT ARRANGEMENTS**

- 7.1 Perth & Kinross Council provides free school transport for the following categories of pupils who attend Perth & Kinross Council schools:
- Primary school pupils who live more than two miles away from their catchment school.
  - Secondary school pupils who live more than three miles away from their catchment school.
  - Pupils who have been 'zoned out' to an alternative school by Education and Children's Services as a result of accommodation issues at their catchment school, who live more than two miles from the 'zoned out' primary school or more than three miles from the 'zoned out' secondary school.
  - Pupils who live under the official walking distances from their catchment school, and have a recognised medical condition that significantly affects their mobility.
  - Where no public transport exists, pupils who live under the official walking distances from their catchment school where the walking route has been considered unsafe for a pupil to walk accompanied by a responsible adult.
  - Pupils with Additional Support Needs who are considered to require transport to meet their specific individual needs.
- 7.2 Transport is provided from a suitable point on the public highway which may be up to two miles (primary) or three miles (secondary) from the pupil's home.
- 7.3 Parents who have made successful placing requests for their children to attend other schools of their choice have to make their own transport arrangements and meet the costs thereof.

## **8. THE NEW PRIMARY SCHOOL**

- 8.1 It is proposed that the new primary school will be situated adjacent to Bertha Park High School to accommodate pupils from the house building. The new primary school would be planned to open in August 2026.
- 8.2 The new primary school would be a non-denominational primary school which would accommodate up to 434 primary pupils.
- 8.3 The Council would build the new primary school to comprise of 14 teaching classrooms with a nursery on site and Intensive Support Provision (ISP) for pupils with complex additional support needs. A school of this size is needed to accommodate pupil numbers generated from all the new housebuilding in the area.

8.4 The maximum P1 intake which would be accommodated each year in the new primary school would be determined by the Council based on factors which include staffing levels and pupil projections.

8.5 The building would make a clear statement about the value the Council places on investing in education and lifelong learning and would be a focal point for the local community.

It would benefit from modern design and materials and consider good practice learned through collaborative working with other Councils and through experience and good practice developed within Perth & Kinross. The building would be sustainable and energy efficient.

8.6 It is important that a new school is flexible and allows the creative and multiple use of spaces by the staff and pupils, and also by the community. The specific layout and plans for the new school would be developed in due course and would be made available through further consultation with key stakeholders in due course through the establishment of a User Reference Group and other associated meetings. The purpose and role of the User Reference Group is to assist with providing relevant local information to allow the Design Team to develop the outline concept design into an operational design.

The User Reference Group normally consists of representatives such as Education and Children's Services staff, Architectural design staff, Headteachers, teaching and non-teaching staff representatives from the affected schools, Pupil Council representatives, Parent Council representatives, Community Capacity Building Workers, Community Council representatives, Church representatives and Local Elected Members.

8.7 The new school would deliver education in purpose-built accommodation which has the ability to deliver the curriculum using latest technology. Experience in previous new school buildings has demonstrated that a new and flexible learning environment has inspired and motivated pupils and has a positive impact on the general health and wellbeing of learners.

## **9. NEW CATCHMENT AREA PROPOSALS**

9.1 All schools have catchment areas and therefore a catchment area must be created for the new primary school.

9.2 When building a new primary school, it is important that there is certainty for parents/carers and pupils, from new house building and houses nearby, that they can attend a school which is near the community in which they live.

9.3 Due to proposed housebuilding, Ruthvenfield Primary School and Pitcairn Primary School will not be able to accommodate all catchment pupils in future years within their existing capacities without changes being made to their catchment areas.

- 9.4 In reviewing catchment areas, it is important that the best catchment areas possible are formed that consider the long-term housebuilding plan for the area. The basis for the development/review of primary school catchment areas is that pupils should be able attend a primary school that is close to where they live and, if possible, within a safe walking distance.
- It is also important that consideration is given to the number of houses in an area and future housebuilding so that schools have sufficient capacity to accommodate all children living in the catchment area both now and in the future.
- 9.5 The map contained within Appendix 1 details the proposed catchment area for the new primary school at Bertha Park and revised catchment areas for Ruthvenfield Primary School, Pitcairn Primary School, Luncarty Primary School and Tulloch Primary School.
- 9.6 The proposed catchment areas would ensure that the new primary school would provide accommodation for the majority of pupils coming from housebuilding at Bertha Park, Almond Valley and part of Perth West. The development of the Almond Valley strategic site includes the areas surrounding Huntingtowerfield and the Auld Mart and therefore it is proposed that children from these areas would also attend the new primary school.
- 9.7 Pupils in the existing Pitcairn Primary School catchment area who live within the Bertha Park strategic site would attend the new primary school as households in this area will live closer to the new primary school than Pitcairn Primary School. Therefore, including these pupils in the new school catchment area will reduce travel distance and travel time for pupils. The development of safe walking routes will also allow pupils in this area to safely walk to the new primary school.
- 9.8 Pupils in the existing Luncarty Primary School catchment area who live within the Bertha Park strategic site would attend the new primary school as households in this area will live closer to the new primary school than Luncarty Primary School. Therefore, including these pupils in the new school catchment area is likely to reduce travel distance and travel time for pupils. The development of safe walking routes may also allow pupils in this area to safely walk to the new primary school as they will attend school on the same side of the A9 that they live.
- 9.9 The catchment area for Ruthvenfield Primary School would be adjusted to reflect the best catchment possible in line with longer term housebuilding plans as well as taking into account houses in close proximity to Ruthvenfield Primary school. Therefore, pupils living in the existing Tulloch Primary School catchment area at Ruthvenfield Road, The Orchard and Ruthvenfield View would move into the Ruthvenfield Primary School catchment area as households in this area are situated directly opposite the school.
- 9.10 Ruthvenfield Primary School would retain the same capacity and number of classes. The proposed catchment area for Ruthvenfield Primary School is shown at Appendix 2.

- 9.11 Children living within the Double Dykes area would attend the new primary school at Bertha Park. Pupils living in this area live closer to the new school site than they do to their current catchment school of Tulloch Primary School.
- 9.12 The proposed catchment areas would allow catchment pupils from housebuilding to attend the new primary school from August 2026.

The table below summarises the proposed catchment changes:

Site	Current Catchment School	Proposed New Primary Catchment
Perth West (north side) <sup>1</sup>	Ruthvenfield Primary	New primary school
Almond Valley	Ruthvenfield Primary (small area remains in Pitcairn Primary catchment)	New primary school
Bertha Park	Pitcairn, Ruthvenfield & Luncarty* Primaries	New primary school
Double Dykes	Tulloch*	New primary school
Ruthvenfield <sup>2</sup> Primary	Ruthvenfield Primary (existing catchment)	Split between New primary school and Ruthvenfield Primary
Houses as identified in close proximity to Ruthvenfield Primary <sup>3</sup>	Tulloch Primary*	Ruthvenfield Primary
Site H319 (adjacent to Ruthvenfield Primary)	Tulloch Primary*	Ruthvenfield Primary

All pupils attending Ruthvenfield Primary School and/or the new primary school would attend Bertha Park High School for secondary education. This would result in a change in secondary school catchment area for those affected pupils currently within Luncarty and Tulloch catchment areas. These are noted with an asterisk\* in the table above.

- 9.13 The proposed new catchment areas would be effective from August 2026 when the new primary school opens.

<sup>1</sup> Includes houses at Auld Mart site e.g. Auld Mart Road, Shorthorn Drive area.

<sup>2</sup> Pupils living in Huntingtowerfield area would attend new primary school.

<sup>3</sup> Pupils living in The Orchard, Ruthvenfield View and Ruthvenfield Road.

9.14 Pupils designated to attend the new primary school who have already commenced their primary education at their current catchment school or another school of their parents' choice, will have the option to transfer to the new primary school when it opens, or they may remain at the school currently attended. No pupils will be required to move school if that is not their parents' wish.

9.15 It should be noted that sites have been identified in Almond Valley and Perth West as locations for future primary schools. Whether these schools are required and developed in future years will be determined by the build out of housing and the number of pupils generated from this housing.

Any new school will require its own catchment area and therefore a catchment review and Statutory Consultation would be required prior to any new school being built.

## **10. NEW TRANSFER ARRANGEMENTS BETWEEN PRIMARY SCHOOLS AND SECONDARY SCHOOL**

10.1 Parents/carers of children who are to transfer to secondary school in August of any one year will receive a letter from Perth & Kinross Council during the month of January offering a place to their child at the secondary school in whose catchment area he/she lives.

10.2 The offer of a secondary school place is determined by the child's home address at the time of allocating secondary school places.

10.3 The current policies on School Admission and Placing Requests would continue to apply to the new primary school when it opens.

10.4 Parents will continue to have the right to make a Placing Request for another secondary school of their choice if they do not wish their child to transfer to the designated secondary school. Parents who make successful placing requests for their child(ren) to attend a school of their choice are required to accept full responsibility for all arrangements and costs relating to transporting them to school.

10.5 All pupils living in the revised catchment area for Pitcairn Primary School, Ruthvenfield Primary School and the catchment area of the new primary school would attend Bertha Park High School for secondary education. This would result in a change in secondary school catchment area for those pupils currently within Luncarty and Tulloch Primary School catchment areas whose catchment area is proposed to change to the new primary school and Ruthvenfield Primary School. They would attend Bertha Park High School instead of Perth Grammar School.

## **11. INTERIM ADMISSION ARRANGEMENTS FOR RUTHVENFIELD PRIMARY SCHOOL**

11.1 The Council is fully committed to working with parents to try, wherever possible, to support choices for their child's place of education during the

establishment of the new school. The Council recognises that in establishing a new primary school and amending catchment areas, this may have implications for parents who have children already in attendance at a primary school who have younger siblings yet to commence school.

- 11.2 The Council's [Admission Policy](#) sets out the priority for allocating places in Perth & Kinross schools. The policy of Perth & Kinross Council Education Authority is to assign to each school a defined zone known as a catchment area. Each home address has a catchment school for both primary and secondary education. The catchment schools are dependent on pupils' permanent home address. Although we try to provide enough places for all children in the catchment area to attend the catchment school, living within a catchment area does not guarantee a child a place at that school.
- 11.3 If the Council does not take steps to reduce the size of Ruthvenfield Primary School's catchment area, this will result in uncertainty for all parents living within the catchment area as not all catchment children will be able to be accommodated in Ruthvenfield Primary School in the future. This will be because the school is not big enough to accommodate pupils from those parts of the strategic sites which are in the current catchment area. Therefore, if Ruthvenfield Primary School catchment area is not reduced, all catchment pupils are unlikely to be able to be accommodated at the school and will require to be zoned to the new primary school at Bertha Park. This situation can and does occur in other schools, and when it does, it is necessary for children to be zoned to the next nearest school with capacity in accordance with the Council's Admission Policy. This will create uncertainty for all parents in the catchment area and could result in siblings not being able to attend the same school if the capacity of Ruthvenfield Primary School is reached.
- 11.4 Ruthvenfield Primary School currently attracts a large number of placing requests from outwith its catchment area. The management of pupil numbers in Ruthvenfield Primary School will be critical until the new primary school opens in August 2026.
- 11.5 The proposed changes to the catchment areas are to be implemented from August 2026. This may mean that it will not be possible to grant all requests for pupils to attend Ruthvenfield Primary School and the allocation of places will require to be prioritised due to the fact that until the new primary school opens, some pupils from the strategic sites will need to be accommodated at Ruthvenfield Primary School. The Council is proposing that pupils will be prioritised to attend Ruthvenfield Primary School until such time as the revised catchment areas are in place, as follows:
- 1 Pupils living within the existing catchment area with an older sibling already in attendance at Ruthvenfield Primary School
  - 2 Pupils living within the existing catchment area with no older sibling already in attendance at Ruthvenfield Primary School
  - 3 Pupils living within the new proposed catchment area with an older sibling already in attendance at Ruthvenfield Primary School

- 4 Pupils living within the new proposed catchment area with no older sibling already in attendance at Ruthvenfield Primary School
- 5 Pupils living outwith the existing and proposed catchment areas with an older sibling already in attendance at Ruthvenfield Primary School
- 6 Pupils living outwith the existing and proposed catchment areas with no older sibling already in attendance at Ruthvenfield Primary School

Where it may be necessary to refuse only some places in any of the 6 Priorities above, because the number of requests exceeds the number of places available, priority will be determined by the single criterion of distance from the specified school, with priority being given to those whose normal place of residence is closest to the school.

- 11.6 Pupils living in the affected areas who have already commenced their primary education at the time of the new primary school opening can remain in their chosen primary school. No existing primary school pupils will be required to move school after the new primary school opens unless that is by parental choice.
- 11.7 From August 2026, the Council's normal Admission Policy will apply to all requests for Ruthvenfield Primary School where pupils will be prioritised based on the new catchment area in operation. All other pupils seeking to attend Ruthvenfield Primary School from outwith the new catchment area will be required to submit placing requests and these will be considered and prioritised in accordance with the Council's Admission Policy.
- 11.8 The Council will continue to operate Reserved Places up to and beyond August 2026 to try to ensure that catchment pupils can be accommodated in Ruthvenfield Primary School.

## **12. NEW SCHOOL TRANSPORT ARRANGEMENTS**

- 12.1 The creation of new catchment areas and provision of a new primary school will impact on current and future transport arrangements.
- 12.2 Pupils living in the Bertha Park and Double Dykes areas will live close to their new catchment school and will have the opportunity to walk to school rather than be transported to Pitcairn Primary School, Luncarty Primary School or Tulloch Primary School.
- 12.3 Once the new primary school is operational, any primary school child living more than the statutory walking distance from their catchment school and/or where the assessed walking route was deemed to be unsafe for pupils to walk accompanied by a responsible adult, would be entitled to free home to school transport
- 12.4 It is likely that the majority of pupils living in the new Ruthvenfield Primary School catchment area will live within the statutory walking distance from their catchment school.



This includes the children living in the Ruthvenfield Road, The Orchard and Ruthvenfield View areas as they will live directly adjacent to their new catchment school.

- 12.5 Perth & Kinross Council will continue to provide free school transport for pupils who attend Perth & Kinross Council schools in accordance with existing policy.
- 12.6 Parents who make successful placing requests for their children to attend schools other than their catchment school have to make their own transport arrangements and meet the costs thereof.
- 12.7 Pupils from the above areas who have already commenced their primary education at their designated primary school, and are currently entitled to receive home to school transport, will continue to be provided with transport until their primary education is completed. This is the case even if their home address falls outwith the new catchment area for the school.
- 12.8 Pupils living in the proposed new catchment areas who have an older sibling in attendance at their previously designated primary school who elect to send younger children to the same school as their older sibling after the new primary school opens in August 2026, may be provided with concessionary transport to attend the same school as their sibling. Concessionary transport may only be available to serve the previous catchment school until all pupils who commenced prior to August 2026 have completed their primary education. This arrangement will cease by the end of session 2031/32.
- 12.9 School Travel Plans are an essential part of Perth & Kinross Council's strategy to tackle issues related to school transport. School Travel Plans also include the promotion of initiatives to increase the number of school children and staff who walk, cycle or use public transport to get to their school.
- 12.10 A School Travel Plan is a strategy developed by each school to encourage and promote more active journeys to school for both pupils and staff. The role of the School Travel Plan is to make alternatives to driving easier and safer, and to give parents/carers and staff plenty of information about the options. A School Travel Plan can help to improve the school run, reduce congestion and increase road safety, make school pupils and staff healthier, make routes to school safer and look after our environment. A School Travel Plan for the new primary school will be developed in consultation with pupils, parents and staff. School travel plans for Ruthvenfield Primary School and Pitcairn Primary School will be revised if needed.

### **13. LIKELY EFFECT OF DIFFERENT TRAVELLING ARRANGEMENTS**

- 13.1 Owing to the location of the proposed site of the new primary school there should be no significant changes to school transport provision for eligible pupils.

It is recognised that there will be changes to methods of travel for some pupils who will, in the future, be within walking and cycling distance to the new school. It is also recognised that there may be changes to travel arrangements and methods of travel for some staff. This will be identified during the development of a School Travel Plan for the new primary school.

## **14. EDUCATIONAL BENEFITS STATEMENT**

14.1 The following educational benefits have been identified:

### **Learning and Teaching**

- The new primary school will provide an opportunity for the curriculum to be designed for and with learners, parents and the community which is relevant and takes into account the context of the community.
- The new primary school will have an early years provision which will support learning across early level of curriculum for excellence and provide opportunities for effective transition for those entering P1.
- Staff in the new primary school will have access to a range of peers to work with collaboratively and support their continuous professional learning including development of effective approaches to learning, teaching and assessment.
- Learning and teaching approaches within the new school will include the use of modern, digital approaches to enhance learning experiences.
- Pupils within the new school will have opportunities to access a wide range of extra-curricular activities and clubs within their community.
- Pupils in Ruthvenfield Primary School will continue to experience a curriculum which is designed for learners to achieve across all curricular areas and develop skills, attributes and capabilities through learning aligned to the principles of Curriculum for Excellence. They will continue to experience learning which focusses on raising attainment and achievement for all.

### **Environment for learning**

- The new primary school will provide accommodation for pupils generated from new housebuilding in the western area of Perth city. It will be designed and built to accommodate 21st century learning.
- The neighbouring primary schools will benefit with the provision of a new primary school which will ensure that the existing schools are not at, or over, capacity from additional pupils generated from housebuilding in the strategic sites.

- The new primary school will benefit from design principles which support the varied range of teaching environments that best deliver learning. Space for learning will be designed in such a way as to allow a range of styles and approaches including play-based learning, interdisciplinary learning and outdoor learning.
- The benefits realised in other new build primary schools in Perth & Kinross will be built upon to ensure that the accommodation is designed to meet the needs of learners and provides flexibility for whole class, small group and individual learning activities as required.
- Experience in previous new school buildings has demonstrated that a new and flexible learning environment has inspired and motivated pupils and has a positive impact on the general health and wellbeing of learners.
- Relationships in the new school will be developed with Bertha Park High School, to allow the seamless transition from primary to secondary, within a community. Existing primary school catchments are being aligned to ensure children who attend these schools' benefit from the same considerations.

## **15. IMPLICATIONS FOR STAFF**

- 15.1 Staffing arrangements for the new primary school will be consistent with Perth & Kinross Council Staffing Standard for primary schools and other local agreements.
- 15.2 Consultation will be undertaken with staff, Trade Unions and professional associations where appropriate on an implementation plan for staffing the new primary school.
- 15.3 The new primary school will join the Bertha Park High School Local Management Group with the other associated primary school Headteachers.

## **16. LIKELY EFFECT ON THE LOCAL COMMUNITY**

- 16.1 The new primary school could provide a focal point for parents/carers of nursery and primary age children, the majority of whom are in new housing, to integrate and socialise with each other and with existing communities including those who live in the current Ruthvenfield Primary School catchment.
- 16.2 The new primary school could provide space which would support this new community by offering accommodation which is different to Bertha Park High School and may be more appropriate for younger children and their families.

The new school building would offer accommodation for activities and events for group which may not have been able to operate previously due to a lack of numbers, interest and/or suitable space within existing facilities.

- 16.3 By locating the new primary school at the heart of the new community it will provide a hub for learning, community activities and facilities that will contribute to improving people's health and wellbeing, adding to the strength and vibrancy of its community.
- 16.4 The proposed new school will provide excellent facilities for children, families and other users outwith core school hours. The new school will provide facilities which could be used to meet the learning, leisure and social needs of the community.
- 16.5 It is anticipated that this proposal may have wider benefits to the community in respect of:
- local employment opportunities
  - apprenticeships on the construction of the new school
- 16.6 It is believed that this proposal will positively impact on local, social or economic activities and will support the local development of the area.
- 16.7 The Council will continue to work with existing community groups and new community groups as they develop.

## **17. SUSTAINABILITY**

Sustainability will be a key factor in the design of the new primary school and will be incorporated into every feasible aspect. This ranges from the materials used to the heating system and the lighting provided, and also to the landscaping of the external site to encourage biodiversity.

## **18. EQUAL OPPORTUNITIES**

- 18.1 An Equality Impact Assessment (EqIA) is a statutory requirement for the Council to assess the policies and practices necessary to meet the requirements of anti-discrimination and equalities legislation. An EqIA can provide more information to develop and deliver services that meet the needs, in this case, of children, parents and staff.
- 18.2 The aim of an EqIA is to examine policies and practice in a structured way to make sure that adverse effects on equality target groups are avoided. It is also a tool to enable the Council to assess what positive steps it can take to promote equality of opportunity and measure the results of the actions that have been taken.
- 18.3 Having regard to provision of a new primary school, it is not believed that this will have a negative impact on any of the equality target groups.

- 18.4 The Council must also consider its duty in respect of socio economic impact. Having a new school located in the community means that it is more accessible for those who may be economically disadvantaged.
- 18.5 As part of the consultation process the Council will consult with a wide range of stakeholders, including staff, parents/carers and young people, and will address comments about equality during this consultation.
- 18.6 Under the Equality Act 2010, education providers must not treat disabled pupils less favourably and should take reasonable steps to avoid putting disabled pupils at a substantial disadvantage. The new primary school will comply with the Council's Accessibility Strategy and, therefore, would positively promote equal opportunities for any child who has a disability.

## **19. CONCLUSION**

- 19.1 The Council believes that the measures proposed in this document will enhance the provision of primary education in Perth & Kinross.
- 19.2 This proposal will ensure that there is a positive balance between the numbers of pupils in the affected primary schools and alleviate projected pupil roll pressures across affected primary schools.
- 19.3 This proposal will provide certainty for parents/carers and pupils by ensuring school catchment areas give pupils the best opportunity to attend their local catchment school as housebuilding progresses.
- 19.4 There are strong educational arguments in favour of this proposal.
- 19.5 Future pupil projections have been considered and the new primary school is required to accommodate projected and potential pupils from the strategic sites.
- 19.6 Environmental impacts have been summarised and detailed work will be done as part of the environmental assessment for this proposal.
- 19.7 The local communities are well served by the existing secondary schools and primary schools which act as focal points for community events, and it is anticipated that the establishment of a new primary school would have a positive impact and will enhance this further. It is believed that that provision of a new primary school will enhance the existing provision.

## **20. RESPONDING TO THE PROPOSAL**

- 20.1 Interested parties are invited to respond to the proposal by making written, electronic or online submissions on the proposal.

Online: [www.pkc.gov.uk](http://www.pkc.gov.uk)

By e-mail: [ECSStatutoryConsultations@pkc.gov.uk](mailto:ECSStatutoryConsultations@pkc.gov.uk)

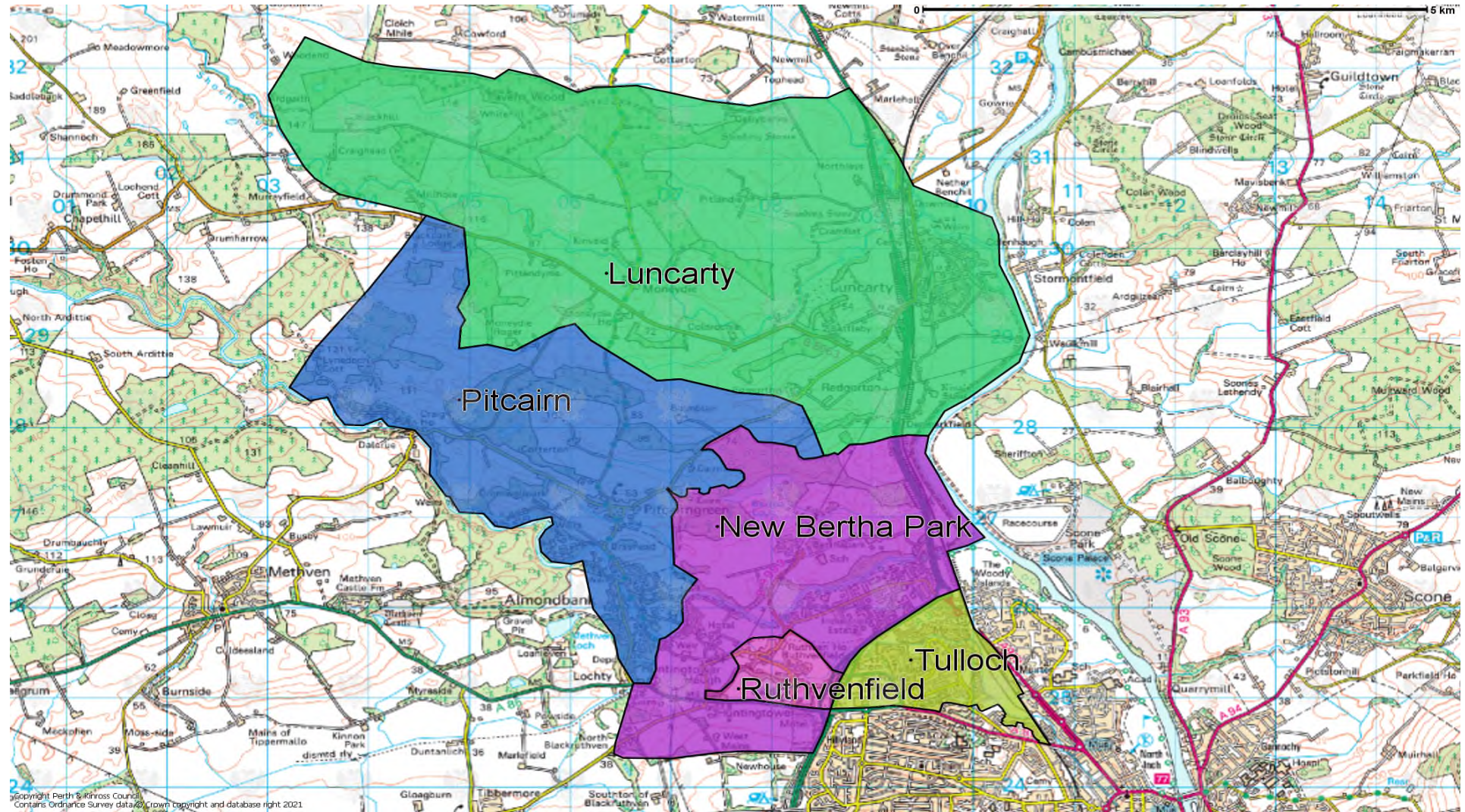
In writing: The New Primary School Consultation, Education and Children's Services, 2 High Street, Perth, PH1 5PH.

**no later than close of business on 29 June 2022.**

- 20.2 Those sending in a response, whether online, electronically or by letter, should know that their response will be open to public scrutiny and may have to be supplied to anyone making a reasonable request to see it.
- 20.3 Any person not wishing their response to be publicly available, should clearly write on the document: "I wish my response to be considered as confidential with access restricted to elected members and council officers of Perth & Kinross Council." Otherwise, it will be assumed that the person making the response agrees to it being made publicly available.
- 20.4 The Executive Director (Education and Children's Services) is delegated authority to investigate and manage any alleged omissions or inaccuracies during the consultation process and to take appropriate action in accordance with The Schools (Consultation) (Scotland) Act 2010.
- 20.5 The Executive Director (Education and Children's Services) prepares a report on the results of the proposal process for consideration at a future meeting of the Lifelong Learning Committee.

Sheena Devlin  
Executive Director (Education and Children's Services)

PROPOSED NEW CATCHMENT AREAS



PROPOSED CATCHMENT AREA FOR RUTHVENFIELD PRIMARY SCHOOL

