

# THIS IS A CONSULTATION DOCUMENT



## PERTH & KINROSS COUNCIL

### EDUCATION AND CHILDREN'S SERVICES

#### PROPOSAL PAPER

##### **This Proposal is to:**

- **Amend the catchment area for Abernyte Primary School to include the area north of the A90 which is currently within Inchtute Primary School catchment area.**

This document has been issued by Perth & Kinross Council for proposal in terms of The Schools (Consultation) (Scotland) Act 2010.

Any Ordnance Survey map data included within this document is provided by Perth & Kinross Council under licence from Ordnance Survey in order to fulfil its public function in relation to this public proposal. Persons viewing this mapping should contact Ordnance Survey Copyright for advice where they wish to licence Ordnance Survey mapping data for their own use.

## **AFFECTED SCHOOLS**

The following schools are directly affected by this proposal document:

- **Abernyte Primary School**
- **Inchtute Primary School**

## **DISTRIBUTION**

A copy of this document is available on the Perth & Kinross Council website: [www.pkc.gov.uk](http://www.pkc.gov.uk)

A link to an electronic version of this document will be provided by letter to:

- The parents of the pupils and children who may attend any of the affected schools
- Parents of children expected to attend any of the affected schools within 2 years of the date of publication of this proposal document
- The teaching and ancillary staff at all of the affected schools
- The trade union and professional association representatives of the above staff
- The Parent Councils (if any) of all the affected schools
- The Community Councils
- Relevant users of all the affected schools
- Elected Members of Perth & Kinross Council
- Lay Members of Lifelong Learning Committee
- The Constituency MSPs and List MSPs covering the Constituency
- The Constituency MPs
- The Executive Director, Communities, Perth & Kinross Council
- Tayside Contracts
- Live Active Leisure
- Education Scotland

This document can be made available in alternative formats or in translated form for readers whose first language is not English. Please apply to Education and Children's Services, 2 High Street, Perth, PH1 5PH by telephone on 01738 476200; or by e-mail: [ECSGeneralEnquiries@pkc.gov.uk](mailto:ECSGeneralEnquiries@pkc.gov.uk)

## **CONSULTATION WITH CHILDREN AND YOUNG PEOPLE**

Pupils will be consulted about the proposal in school in accordance with the Children's Commissioner Guidance and further information about this will be provided to parents/carers.

## **SUMMARY OF PROCESS FOR THIS PROPOSAL DOCUMENT**

### **1. Consideration by the Lifelong Learning Committee**

This proposal document has been issued as a result of a decision taken by the Lifelong Learning Committee of Perth & Kinross Council (Report No [21/64 refers](#)). This process is to seek views on the proposals in this paper.

### **2. Proposal document and supporting Information issued to consultees and published on the Council website**

A link to a copy of this document will be issued to the consultees listed on the preceding page, and it will also be published on the Council website: [www.pkc.gov.uk](http://www.pkc.gov.uk)

### **3. Length of consultation period**

The consultation will open on Monday 16 May 2022. The consultation will thereafter run until close of business on Wednesday 29 June 2022, which includes a period of 31 school days.

### **4. Public meeting**

A public meeting will be held, the details of which are given on page 5 of this document.

### **5. Involvement of Education Scotland**

When the proposal document is published, a copy will also be sent to Education Scotland by the Education Authority. Education Scotland will also receive a copy of any relevant written representations received by the Authority from any person during the consultation period or, if Education Scotland agree, a summary of them. Education Scotland will further receive a summary of any oral representations made to the Authority at the public meetings which will be held and a copy of any other relevant documentation.

Education Scotland will then prepare a report on the educational aspects of the proposal not later than 3 weeks after the Authority has sent them all representations and documents mentioned above. For the avoidance of doubt, the 3 week period will not start until after the consultation period has ended. In preparing their report, Education Scotland may enter the affected schools and make such reasonable enquiries of such people there as they consider appropriate, and may make such reasonable enquiries of such other people as they consider appropriate.

### **6. Preparation of consultation report**

The Education Authority will review the proposal having regard to the Education Scotland Report, written representations that it has received and oral representations made to it, by any person at the public meetings.

It will then prepare a consultation report. This report will be published in electronic format and will be available on the Council website. Anyone who made written representations to the Authority during the consultation period will also be informed about the report.

The report will include:

- a record of the total number of written representations made to the Authority during the consultation period;
- a summary of the written representations;
- a summary of the oral representations made at the public meetings;
- the Authority's response to the Education Scotland Report as well as any written or oral representations it has received, together with a copy of the Education Scotland Report and any other relevant information, including details of any alleged inaccuracies and how these have been handled; and
- a statement explaining how the Authority complied with the requirement to review the proposal in light of the Education Scotland Report and representations (both written and oral) that it received.

The consultation report will be published and available for further consideration for a period of 6 weeks.

## **7. Decision**

This report, together with any other relevant documentation, will be considered by the Lifelong Learning Committee of Perth & Kinross Council, who will take forward a final proposal no earlier than November 2022.

## **8. Note on corrections**

If any inaccuracy or omission is discovered in this proposal document, either by the Council or any person, the Council must investigate and decide what, if any, action is required. If relevant information has been omitted or there has been an inaccuracy, the Council will then take appropriate action which may include the issue of a correction notice, the publishing of a corrected proposal paper or the revision of the timescale for the consultation period if appropriate. In that event, relevant consultees and Education Scotland will be advised. The Authority must inform the person who made the allegation and what action it has taken.

## **9. Note**

This consultation is being conducted having regard to the terms of the Schools (Consultation) (Scotland) Act 2010.

## **PUBLIC MEETING**

A public meeting will be held to discuss these proposals. Anyone wishing to attend the public meeting is invited to do so. The meeting, which will be convened by the Education Authority, will be addressed by the Executive Director (Education and Children's Services), or other senior officers of the Council.

The meeting will be an opportunity for interested parties to:

- Hear more about the proposal
- Ask questions about the proposal
- Have their views recorded so that they can be taken into account as part of the consultation process.

The public meeting is as follows:

**Venue: Inchtore Primary School, Inchtore PH14 9RN**

**Date: Thursday 9 June 2022**

**Time: 7.00 pm**

A note will be taken at the meeting of questions and views. This note will be published on the Council website, and a printed copy will be made available upon request.

**PERTH & KINROSS COUNCIL  
EDUCATION AND CHILDREN'S SERVICES**

**THIS IS A PROPOSAL DOCUMENT**

**Proposal:**

That subject to the outcome of this consultation exercise, the Council proposes to:

- Amend the catchment area for Abernyte Primary School to include the area north of the A90 currently within Inchtute Primary School catchment area with effect from August 2023.

This Proposal Paper should be read in conjunction with the [Options Appraisal](#) as it contains more detail regarding the options considered and rejected along with feedback received during the pre-consultation exercise.

**1. VISION AND STATUTORY RESPONSIBILITIES**

- 1.1 The Council's Corporate Plan identifies the vision of "a confident and ambitious Perth & Kinross with a strong identity and clear outcomes that everyone works together to achieve. Our area will be vibrant and successful; a safe secure and healthy environment: and a place where people and communities are nurtured and supported'.
- 1.2 This strategic approach embraces the vision for our area, our communities and our people as outlined in the Corporate Plan. Our key service priorities support the delivery of our commitments in the Community Planning Partnership's Single Outcome Agreement and Corporate Plan, helping Education and Children's Services to focus on the local outcomes that will achieve meaningful improvements for the area, our local communities and our citizens.
- 1.3 Councils have a statutory duty in terms of the Education (Scotland) Act 1980 to make adequate and efficient provision of school education across their entire area for the current school population and future pattern of demand.
- 1.4 Councils also have a statutory responsibility in terms of the Local Government in Scotland Act 2003 to achieve best value. To achieve best value and optimum efficiency, the organisation of the school estate is therefore kept under regular review, including the need for school provision and other factors, such as altering catchment areas.
- 1.5 The [Schools \(Consultation\) \(Scotland\) Act 2010](#) provides a strong, accountable statutory consultation process that local authorities must apply to their handling of all proposals of major changes to schools.

These consultation processes are expected to be robust, open, transparent and fair, and seen to be so. They are also expected to be consistent across Scotland.

- 1.6 [The Education \(Scotland\) Act 2016](#) amends the Standards in Scotland's Schools Act 2000 by adding in new duties to address inequality of outcome. These duties apply in different ways to both Scottish Ministers and Education Authorities. Where the Education Authority is making or implementing strategic decisions about school education, it is required to have due regard to the need to carry out its functions in a way which is designed to reduce inequalities of outcome. This is particularly directed in the Act towards pupils who experience those inequalities through socio-economic disadvantage, but there is also a power to extend the range of pupils who are covered by this duty.

## **2. BACKGROUND**

- 2.1 On 4 November 2020, Lifelong Learning Committee approved the scope and principles to be used to underpin the options appraisal to be developed for a catchment review for Abernyte Primary School ([Report No. 20/208 refers](#)). Lifelong Learning Committee requested the Executive Director (Education and Children's Services) to submit a completed options appraisal to Lifelong Learning Committee in May 2021
- 2.2 On 26 May 2021, Lifelong Learning Committee considered the outcome of the options appraisal ([Report 21/64 refers](#)). The proposed recommendations within the report were considered and amended by the Lifelong Learning Committee in their [deliberations](#). The Lifelong Learning Committee subsequently approved the recommendations of the options appraisal to maintain a school capacity of 44 pupils at Abernyte Primary School and undertake a statutory consultation on a proposal to amend the catchment area for Abernyte Primary School to include the area currently within the Inchtute Primary School catchment area north of the A90 within the catchment of Abernyte Primary School. This area would be removed from the current catchment area of Inchtute Primary School. It was also noted that the introduction of nursery provision is not required at Abernyte Primary School at this time.

## **3. REASON FOR FORMULATING THE PROPOSAL**

- 3.1 The purpose of increasing the Abernyte Primary School catchment area would be to meet the principle of building a sustainable school roll.

## **4. CURRENT SCHOOL INFORMATION**

- 4.1 Abernyte Primary School is a non-denominational school located in the village of Abernyte which is situated in the Carse of Gowrie, approximately 12 miles from Perth and approximately 12 miles from Dundee.

The school roll as at Census 2021 was 18 pupils and the roll is projected to be 22 pupils for school session 2022/2023. The capacity of the school is 44 pupils. Abernyte Primary School serves all of Abernyte village and the surrounding area. The delineated catchment area is from within a boundary line from Outfield Farm, Balloleys Farm, Dundriven, Little Ballo, Lauriston Cottage Knapp and the Scottish Antiques & Arts Centre.

- 4.2 Inchtute Primary School is a non-denominational school located in the village of Inchtute situated in the Carse of Gowrie, approximately 13 miles from Perth and approximately 9 miles from Dundee. The school roll as at Census 2021 was 225 pupils and the roll is projected to be 223 pupils for school session 2022/2023. The capacity of the school is 264 pupils. The capacity of Inchtute Primary School can be increased beyond 264 pupils without the school being extended. The catchment area covers the village of Inchtute and surrounding areas of Rait, Kilspindie, Kinnaird, Craigdallie, Knapp and Ballindean. There is also nursery provision at Inchtute Primary School.

## **5. PRESENT CATCHMENT AREA ARRANGEMENTS**

- 5.1 Each primary school has a defined catchment area
- 5.2 Pupils living within these catchment areas are considered to be entitled to attend the designated primary school as an entitled pupil.
- 5.3 Parents who wish their child to attend a school other than their designated catchment school may submit a placing request application to the Education Authority for consideration to attend another school.
- 5.4 The catchment areas for Abernyte Primary School is shown in Appendix 1 and the catchment area for Inchtute Primary School is shown in Appendix 2.

## **6. TRANSFER ARRANGEMENTS BETWEEN PRIMARY SCHOOLS AND SECONDARY SCHOOL**

- 6.1 Parents/carers of children who are transferring to begin secondary school education in the August of any one year receive a letter from Perth & Kinross Council during the month of January offering a place to their child at the secondary school in whose catchment area he/she lives.
- 6.2 The offer of a secondary school place is determined by the child's home address at the time of allocating secondary school places.
- 6.3 Parents who have made a successful placing request for their child to attend a particular primary school other than their catchment school may not be offered a place for their child in the associated secondary school if their home address is not within the catchment area for that secondary school.



- 6.4 If parents/carers do not wish their child to attend the catchment secondary school, they can decide to make a placing request to send their child to another secondary school.
- 6.5 Pupils living within the catchment area of Abernyte Primary School and Inchtute Primary School are entitled to attend Perth High School. Therefore, there would be no change to the current transfer arrangements if the catchment area changes.

## **7. EXISTING SCHOOL TRANSPORT ARRANGEMENTS**

- 7.1 Perth & Kinross Council provides free school transport for the following categories of pupils who attend Perth & Kinross Council schools:
- Primary school pupils who live more than two miles away from their catchment school.
  - Secondary school pupils who live more than three miles away from their catchment school.
  - Pupils who have been 'zoned out' to an alternative school by Education and Children's Services as a result of accommodation issues at their catchment school, who live more than two miles from the 'zoned out' primary school or more than three miles from the 'zoned out' secondary school.
  - Pupils who live under the official walking distances from their catchment school, and have a recognised medical condition that significantly affects their mobility.
  - Where no public transport exists, pupils who live under the official walking distances from their catchment school where the walking route has been considered unsafe for a pupil to walk accompanied by a responsible adult.
  - Pupils with Additional Support Needs who are considered to require transport to meet their specific individual needs.
- 7.2 Transport is provided from a suitable point on the public highway which may be up to two miles (primary) or three miles (secondary) from the pupil's home.
- 7.3 Parents who have made successful placing requests for their children to attend other schools of their choice have to make their own transport arrangements and meet the costs thereof.

## **8. NEW CATCHMENT AREA PROPOSALS**

- 8.1 It is proposed that a new catchment area is to be achieved by redefining the existing catchment areas for Abernyte Primary School and Inchtute Primary School. This new catchment area would be defined by withdrawing the area north of the A90 from Inchtute Primary School catchment area and incorporating this specific area into the catchment area for Abernyte Primary School.

- 8.2 There are currently 11 school age children and 11 pre-school children living in the area north of the A90. Views were sought from these parents as part of the pre-consultation work undertaken to inform the [options appraisal](#).
- 8.3 The proposed new catchment areas would be effective from August 2023.

## **9. ADMISSION ARRANGEMENTS**

- 9.1 The Council is fully committed to working with parents to try, wherever possible, to support choices for their child's place of education. The Council recognises that in amending catchment areas, this may have implications for parents who have children already in attendance at a primary school who have younger siblings yet to commence school.
- 9.2 The Council's [Admission Policy](#) sets out the priority for allocating places in Perth & Kinross schools. The policy of Perth & Kinross Council Education Authority is to assign to each school a defined zone known as a catchment area. Each home address has a catchment school for both primary and secondary education. The catchment schools are dependent on pupils' permanent home address. Although we try to provide enough places for all children in the catchment area to attend the catchment school, living within a catchment area does not guarantee a child a place at that school.
- 9.3 Pupils living in the affected area who have already commenced their primary education can remain in their current chosen primary school. No existing primary school pupils will be required to move school as a result of a change to the catchment area in which they live unless that is by parental choice.
- 9.4 From August 2023, the Council's normal Admission Policy will apply to all requests for Abernyte Primary School and Inchtute Primary School where pupils will be prioritised based on the new catchment area in operation. All other pupils seeking to attend either school from outwith the new catchment area will be required to submit placing requests and these will be considered and prioritised in accordance with the Council's Admission Policy.

## **10. TRANSITIONAL ARRANGEMENTS**

- 10.1 Changes to school catchment areas can raise particular issues for some families. Changes could mean that a younger child is deemed to have a different catchment school from their elder sibling attending school under a previous arrangement. There are special transitional arrangements proposed to support any families who may be in this situation.
- 10.2 The transitional arrangements are proposed to give flexibility and choice for families directly affected by the proposed change to the catchment area. These arrangements would last for a limited period of time.

- 10.3 For children of families who currently live in the area affected by the proposed change of catchment school, it is proposed that the following arrangements would apply during the transitional period:
- If the offer of a place at Inchtute Primary School has already been made by the time of the Council decision, these will be honoured by the Council.
  - Children would continue to attend Inchtute Primary School until they finish their education there unless parents/carers choose to transfer them to their new catchment school, Abernyte Primary School.
  - If these children are currently entitled to, and receive, free home to school transport to Inchtute Primary School, that arrangement would continue.
  - Younger brothers or sisters of a child currently attending their existing catchment school of Inchtute Primary School would require to make a formal placing request to attend the same school. Placing requests for pupils who have an older sibling already in attendance at the school are prioritised above pupils who do not have any older siblings already attending the school.
- 10.4 It is not proposed that assistance with school transport would specifically be made available for siblings to attend Inchtute Primary School from the affected area. In some instances, transport may be available for siblings of existing school pupils on a concessionary basis for the period of the transitional arrangements but this could not be guaranteed.

## **11. NEW SCHOOL TRANSPORT ARRANGEMENTS**

- 11.1 The creation of new catchment areas and provision of a new primary school considers current and future transport arrangements.
- 11.2 Once the new catchment area is operational, any primary school child living more than the statutory walking distance from their catchment school and/or where the assessed walking route was deemed to be unsafe for pupils to walk accompanied by a responsible adult, would be entitled to free home to school transport
- 11.3 Perth & Kinross Council will continue to provide free school transport for pupils who attend Perth & Kinross Council schools in accordance with existing policy. Under this policy, pupils will be eligible for free home to school transport to attend their designated catchment school where the distance between their home address and their catchment school is more than 2 miles for primary pupils.
- 11.4 Parents who make successful placing requests for their children to attend schools other than their catchment school have to make their own transport arrangements and meet the costs thereof.

- 11.5 Pupils from the affected area who have already commenced their primary education at their designated primary school, and are currently entitled to receive home to school transport, will continue to be provided with transport until their primary education is completed.
- 11.6 Pupils living in the proposed new catchment area who have an older sibling in attendance at their previously designated primary school who elect to send younger children to the same school as their older sibling after the new catchment is to be implemented in August 2023, may be provided with concessionary transport to attend the same school as their sibling. Concessionary transport may only be available to serve the previous catchment school until all pupils who commenced prior to August 2023 have completed their primary education. This arrangement will cease by the end of session 2028/29.
- 11.7 Pupils living north of the A90 who currently attend Abernyte Primary School as the result of a successful placing request would be entitled to free home to school transport from August 2023 if the proposal is implemented where their home address is more than 2 miles from Abernyte Primary School. Pupils who are currently entitled to and provided with school transport to Inchtute Primary School would be entitled to and provided with school transport to Abernyte Primary School if the proposal is implemented and parents wished for their child to attend the new catchment school from August 2023.
- 11.8 School Travel Plans are an essential part of Perth & Kinross Council's strategy to tackle issues related to school transport. School Travel Plans also include the promotion of initiatives to increase the number of school children and staff who walk, cycle or use public transport to get to their school. A School Travel Plan is a strategy developed by each school to encourage and promote more active journeys to school for both pupils and staff. The role of the School Travel Plan is to make alternatives to driving easier and safer, and to give parents/carers and staff plenty of information about the options. A School Travel Plan can help to improve the school run, reduce congestion and increase road safety, make school pupils and staff healthier, make routes to school safer and look after our environment.

## **12. LIKELY EFFECT OF DIFFERENT TRAVELLING ARRANGEMENTS**

- 12.1 The travel distance between Abernyte Primary School and Inchtute Primary School is approximately 3.42 miles. The effect on pupils of travelling to Abernyte Primary School from the Inchtute Primary School catchment is limited due to the relatively short distances involved and the small number of pupils involved. There are currently 5 pupils travel from the area north of the A90 to Inchtute Primary School. The travel distances for these pupils to Inchtute Primary School varies between approximately 2.01 miles and 3.79 miles. The travel distances for these pupils to Abernyte Primary School would vary between approximately 2.22 miles and 3.36 miles.
- 12.2 Future transport would be provided by the Council for those pupils who live beyond the statutory travel distance to school.

- 12.3 The travel distance between Abernyte and Inchtute is not far and in other more rural parts of Perth & Kinross it is not uncommon for pupils to travel greater distances on more minor roads to reach their school. Taking this option forward would not adversely affect the travel arrangements for current pupils and future pupils are unlikely to have hugely different travel arrangements.
- 12.4 Travelling for primary school education is common across Perth & Kinross because of the geography of the area. A number of pupils from Abernyte already travel to Inchtute Primary School by choice as the result of successful placing requests, and a number of pupils from Inchtute already travel to Abernyte Primary School by choice as the result of successful placing requests
- 12.5 There will be no impact on staff travel arrangements.

### **13. EDUCATIONAL BENEFITS STATEMENT**

- 13.1 The following educational benefits have been identified:
- Increasing the catchment area of Abernyte Primary School will provide the opportunity to create a more sustainable roll for the school by increasing the number of pupils designated to attend the school.
  - Abernyte Primary School had previously been operating as a single teacher school. However, the school has benefitted from operating with 2 composite classes as a result of the increased pupil roll from school session 2021/2022. Maintaining an increased pupil roll above 17 pupils will make it more likely that the school will be able to continue to operate as a 2 teacher school.
  - An increased school roll affords pupils increased opportunities to build relationships at peer level and across all stages in the school and in mixed sex groups. This allows the sharing of ideas, peer support, informal mentoring and relationship building, all which contribute to the whole school experience for all pupils.
  - Work is differentiated to adapt to pupils' needs and an increased school roll allows pupils to benefit more from being able to work on co-operative learning tasks with others.
  - An increased pupil roll at Abernyte Primary School is likely to provide a better gender balance of pupils within the school.

### **14. IMPLICATIONS FOR STAFF**

- 14.1 Staffing arrangements will continue to be consistent with Perth & Kinross Council Staffing Standard for primary schools and other local agreements.

14.2 There would be no implications for any teaching or support staff currently employed at either Abernyte Primary School or Inchtute School as a result of this proposal to alter the catchment area.

14.3 Abernyte Primary School and Inchtute Primary School will continue to be part of the Perth High School Local Management Group with the other associated primary school Headteachers.

## **15. LIKELY EFFECT ON THE LOCAL COMMUNITY**

15.1 It is believed that this proposal will not adversely impact on local, social or economic activities.

15.2 Due to the short distances involved, it is believed that there will be no significant impact for the wider community to continue to access facilities and activities which are located in Abernyte and Inchtute.

15.3 The likely effect of the proposal would not impact on the Parent Councils of Abernyte Primary School or Inchtute Primary School.

## **16. OTHER ISSUES**

16.1 It is intended that the proposal will be implemented in January 2023 in time for school admission arrangements for the 2023/24 academic session, which commences in August 2023. This will allow the Council to conduct the necessary consultation in accordance with the relevant statutory frameworks.

16.2 It is acknowledged that should the proposal be approved and implemented, forward planning will be required from Education and Children's Services and school senior staff, as a matter of good management practice. This planning is necessary in respect of pupil enrolments and placing requests, school transport arrangements and associated issues.

## **17. FINANCIAL IMPLICATIONS**

17.1 There may be financial implications for Perth & Kinross Council associated with this proposal relating to additional school transport costs. Pupils living north of the A90 who currently attend Abernyte Primary School as the result of a successful placing request would be entitled to free home to school transport if the proposal is implemented. Pupils who are currently entitled to and provided with school transport to Inchtute Primary School would be entitled to and provided with school transport to Abernyte Primary School if the proposal is implemented and parents wished for their child to attend the new catchment school.

17.2 The school transport which currently serves Inchtute Primary School transports pupils from north of the A90 in addition to pupils from other areas of Inchtute Primary School's catchment area.

Therefore, if this proposal is implemented, the transport currently serving Inchtore Primary School will be required to continue to operate to transport pupils to Inchtore Primary School.

- 17.3 The potential additional cost of school transport for pupils living north of the A90 to attend Abernyte Primary School is not known at this stage. This would be dependent on the numbers of pupils who would attend Abernyte Primary School if the proposal is implemented. This would be considered as part of the Council's re-tendering exercise of all school transport bus contracts in the Autumn of 2022 which will be effective from April 2023.

## **18. EQUAL OPPORTUNITIES**

- 18.1 An Equality Impact Assessment (EqIA) is a statutory requirement for the Council to assess the policies and practices necessary to meet the requirements of anti-discrimination and equalities legislation. An EqIA can provide more information to develop and deliver services that meet the needs, in this case, of children, parents and staff.
- 18.2 The aim of an EqIA is to examine policies and practice in a structured way to make sure that adverse effects on equality target groups are avoided. It is also a tool to enable the Council to assess what positive steps it can take to promote equality of opportunity and measure the results of the actions that have been taken.
- 18.3 Having regard to the proposal to amend the catchment area of Abernyte Primary School, it is not believed that this will have a negative impact on any of the equality target groups. It is believed that there would be no adverse economic disadvantage to implement the proposal to amend the catchment area of Abernyte Primary School.
- 18.4 As part of the consultation process the Council will consult with a wide range of stakeholders, including staff, parents/carers and young people, and will address comments about equality during this consultation.

## **19. CONCLUSION**

- 19.1 The Council considers increasing the Abernyte Primary School catchment area would contribute towards the principle of building a sustainable school roll for Abernyte Primary School.
- 19.2 The Council considers that the measures proposed in this document will have educational benefits for Abernyte Primary School.
- 19.3 This proposal will achieve a likely benefit for Abernyte Primary School without adversely impacting Inchtore Primary School.

- 19.4 This proposal will provide certainty for parents/carers and pupils in terms of ensuring school catchment areas are appropriate to ensure that pupils have the best opportunity to attend their local catchment school.
- 19.5 Future pupil projections have been considered and the proposal can accommodate projected and potential pupils from the catchment area.

## **20. RESPONDING TO THE PROPOSAL**

- 20.1 Interested parties are invited to respond to the proposal by making written, electronic or online submissions on the proposal.  
Online: [www.pkc.gov.uk](http://www.pkc.gov.uk)

By e-mail: [ECSStatutoryConsultations@pkc.gov.uk](mailto:ECSStatutoryConsultations@pkc.gov.uk)

In writing: Abernyte Catchment Consultation, Education and Children's Services, 2 High Street, Perth, PH1 5PH.

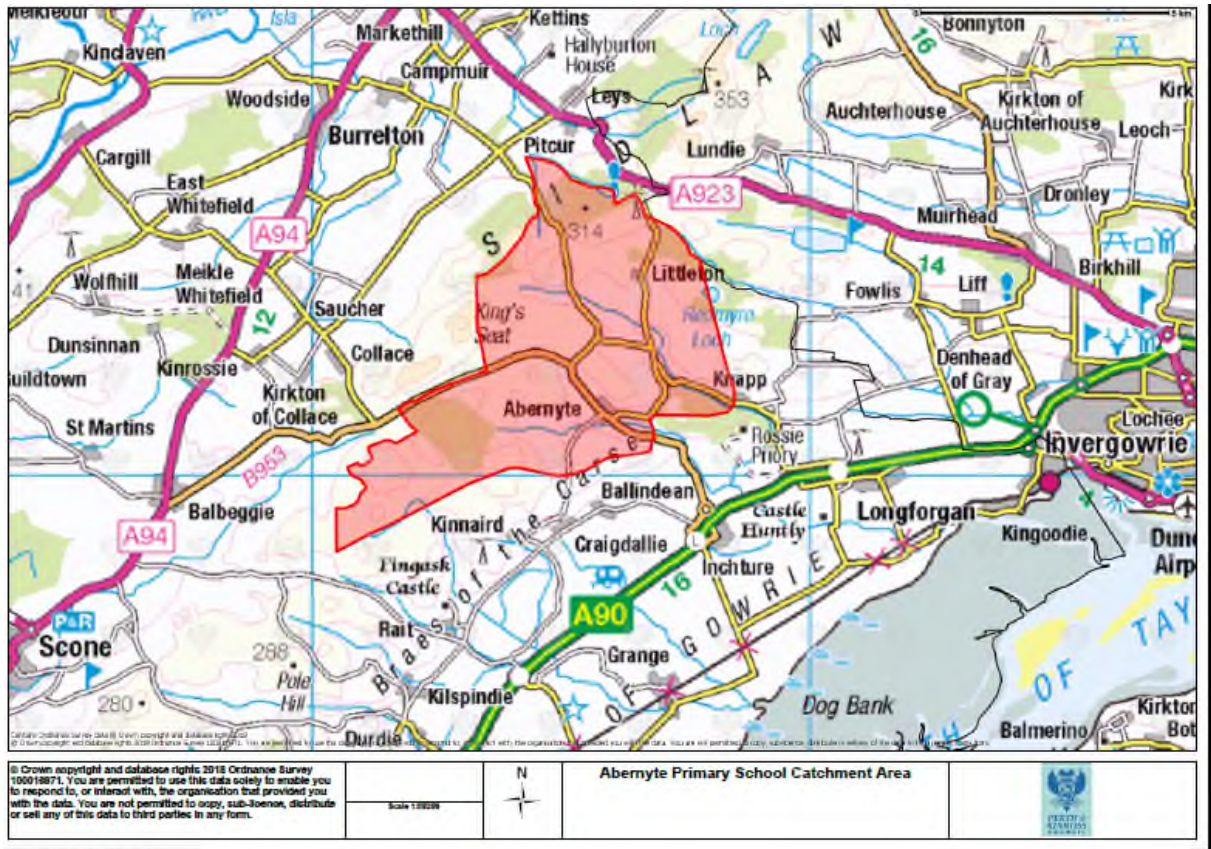
**no later than close of business on 29 June 2022.**

- 20.2 Those sending in a response, whether online, electronically or by letter, should know that their response will be open to public scrutiny and may have to be supplied to anyone making a reasonable request to see it.
- 20.3 Any person not wishing their response to be publicly available, should clearly write on the document: "I wish my response to be considered as confidential with access restricted to elected members and council officers of Perth & Kinross Council." Otherwise, it will be assumed that the person making the response agrees to it being made publicly available.
- 20.4 The Executive Director (Education and Children's Services) is delegated authority to investigate and manage any alleged omissions or inaccuracies during the consultation process and to take appropriate action in accordance with The Schools (Consultation) (Scotland) Act 2010.
- 20.5 The Executive Director (Education and Children's Services) prepares a report on the results of the proposal process for consideration at a future meeting of the Lifelong Learning Committee.

Sheena Devlin  
Executive Director (Education and Children's Services)



**ABERNYTE PRIMARY SCHOOL CATCHMENT AREA**



INCHTURE PRIMARY SCHOOL CATCHMENT AREA

