

COMRIE FPS - CONTRACTOR'S ACCESS PROPOSALS

ACCESS ROUTES (KEY):

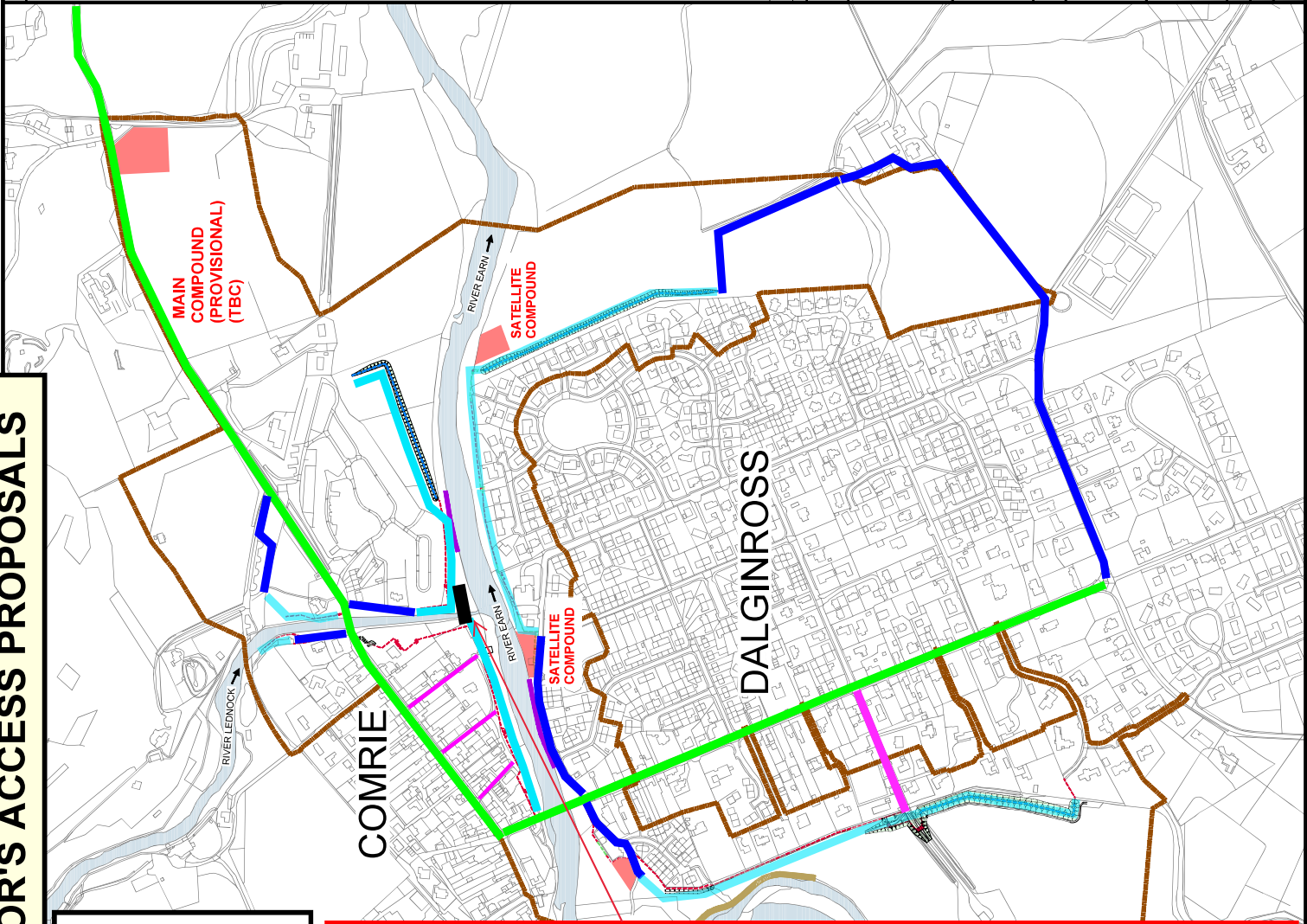
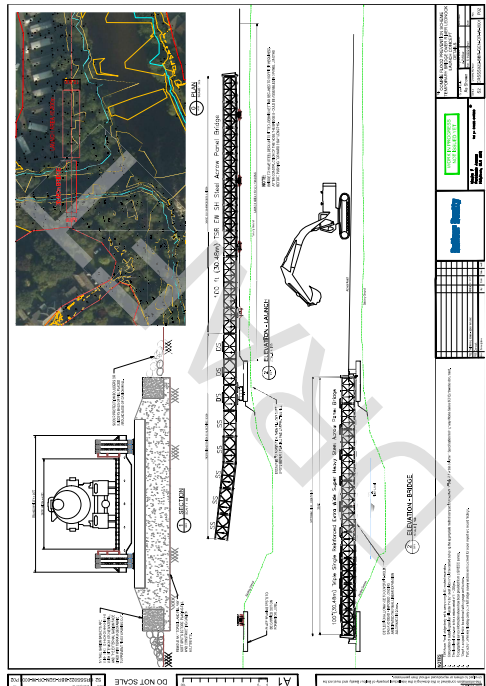
- Main Access Route
- Local Site Access
- Occasional Site Access
- Temporary Access
- Temporary Bridge

TEMPORARY BRIDGE (R.LEDNOCK)

A key change to the overall access plan for the construction of the flood scheme is the introduction of a temporary bridge over the River Lednock.

This now means large construction vehicles will not be required to take access to the boulevard via the narrow lanes (Commercial, Ancaster and Manse). Occasional access may still be required by light construction traffic however.

The temporary bridge also reduces construction traffic through the centre of Comrie.



NOTES

- THIS PLAN IS IN ACCORDANCE WITH THE REQUIREMENTS OF SECTION 62 AND SCHEDULE 2 OF THE FLOOD RISK MANAGEMENT (SCOTLAND) PROTECTION SCHEME 2020.
- THIS PLAN IS TO BE READ IN CONJUNCTION WITH THE COMRIE FLOOD PROTECTION SCHEME 2020.
- ALL OPERATIONS MUST TAKE PLACE WITHIN THE RIVERS EARN, RUCHILL AND LEDNOCK IDENTIFIED WITHIN THE OPERATIONS PLAN.
- ALL OPERATIONS MUST TAKE PLACE WITHIN THE OPERATIONS PLAN AND INFORMATION PROVIDED BY THE OPERATIONS PLANNING TEAM HAS BEEN USED TO IDENTIFY LOCATIONS OF SERVICES, EXACT LOCATIONS OF OPERATIONS AND THE LENGTHS OF THE WATER OF RUCHILL, THE RIVER EARN AND THE RIVER LEDNOCK TO BE FINISHED WITH A RIVER SCOUR PROTECTION AND WITHIN THE ENVIRONMENTAL DUE TO THE UNCERTAIN NATURE OF TREE ROOT ZONES, THE STATUS OF EXISTING TREES AS INDICATED ON THIS PLAN MAY BE ALTERED DURING THE DESIGN AND CONSTRUCTION OF THE OPERATIONS.

- KEY**
- CLAD STEEL SHEET PILE WALL
 - FLOOD EMBANKMENT WITH STEEL SHEET PILE CORE
 - FLOOD EMBANKMENT WITH RC CORE
 - CLAD RC WALL
 - LIMITS OF LAND AFFECTED BY THE OPERATIONS AND OF LAND UPON WHICH ENTRY MAY BE REQUIRED FOR THE OPERATIONS AND EXECUTING THE TEMPORARY WORKS
 - RIVER SCOUR PROTECTION AND/OR STRENGTHENING
 - ROOT WAD REVETMENT

THIS IS THE PLAN MARKED 1183884000000 REFERRED TO IN THE FLOOD PROTECTION SCHEME FOR COMRIE FLOOD PROTECTION SCHEME 2020

PROPER OFFICER

(Signature)

FOR PERTH AND KINROSS COUNCIL

(Date)

Rev.	Date	Amendment Details	Drawn (Initials)	Checked (Initials)	DFC	DMC	JAG
02	14/01/2022						

SWECO

2nd Floor, Quay 2
139 Fountainbridge
Edinburgh, EH3 9QS
Tel: +44 (0)131 550 0300
Web: www.sweco.co.uk



SCHEME

COMRIE FLOOD PROTECTION SCHEME 2020

COMRIE FLOOD PROTECTION SCHEME ACCESS PROPOSALS

Drawn By	Checked By	Approved By	Date
NTS	NTS	GAB	21/08/22
Drawn Scale	A1		