



Education and Learning
Improving Lives Together
Ambition | Compassion | Integrity



NEWSLETTER

ELC Newsletter, Issue 31, May 2024

Contents

Care Inspectorate Inspections in Kids Clubs
Crieff PS Nursery – Building Links in the Community
Well done to our ELC settings who have gained their Emotion Works Bronze Accreditation!
ELC Maths Improvement Celebration

Care Inspectorate updates

Use of raw flour
Webinar: Exploring health protection guidance for use in children and young people settings, including education
Relaunch of the Space to Grow and Thrive resource
Me, myself and childcare

SSSC Updates

New website to support your continuous professional learning (CPL)
Minister launches new Codes for social service workforce
Planned downtime for all SSSC systems and website

Training

Supporting the Learning and Development of Boys in ELC
SSSC open badges
ELC Senior Practitioner Training
The Importance of the Communication Champion role in PKC
Support to access Award-bearing Qualifications

Funding

Food for Thought Education Fund 2024 - 2025

Play

Education and Learning Summer 2024 Holiday Activities Offer
Summer Fun in Kids Clubs and Wraparound Care
Playday 2024
Share your summertime activities in Perth & Kinross with us

ELC Glow reminder



Care Inspectorate Inspections in Kids Clubs

Perth and Kinross Council, through the Childcare Strategy Team manage 11 Kids Clubs providing school aged childcare term-time with some operating during holiday periods. Kids Clubs are play based environments, providing a range of play opportunities for children from primary 1 up to 14 years.

Since October 2023 – May 2024 there have been 4 Care Inspectorate inspections, these have been at Milnathort Kids Club, Kinnoull Kids Club, St John's Kids Club and more recently Village Kids Club, Bridge of Earn.

All services were graded good or very good for the Care, Play and Learning. Inspectors across all the services observed children benefitting from supportive and respectful interactions with staff. Staff listened to children and cared about their views and opinions and as a result the care and play and environment was based around children's ideas and interests. The use of floorbooks were praised for how staff listened to children, utilised the resources, and set up the environment from scratch in shared spaces such as GP rooms and dining halls.

At [Kinnoull Kids Club](#) staff had successfully created areas of play within the large hall which developed children's independence and promoted their creativity and imagination. Resources were easily accessible which enabled children to self-select and make their own choices. Children played cooperatively in small group which helped them build positive relationships with their peers and develop their social skills.

At [St Johns Kids Club](#), the inspector reported that staff had a good mix of skills, and experience to meet children's needs. Staff shared the training they had attended and how they used this to provide quality play and learning.

At [Village Kids Club](#), inspectors noted that children and families were meaningfully involved and could influence change within the setting, Children were clearly leaders in the development of the service. As a result, they were empowered to advocate for themselves and create change.

At [Milnathort Kids Club](#), the report praised the strong team working ethos contributed to a caring environment for children and families. Effective use was made of staff's differing experience, knowledge, and skills which enabled them to provide positive experiences for children. The staff skill mix complemented each other, with their strengths in different areas enabling them to offer a range of interesting and exciting experiences

As always there are areas we will continue to work on to improve which will be reflected in our Quality Improvement plans which are then shared with Parents/Carers.



Crieff PS Nursery – Building Links in the Community

click title to return to top

The children at Crieff Nursery recently made it into The Courier by sharing the relationship they have built with the Comrie Silver Circle this year. The children have been enjoying regular visits to the senior citizen club where relationships have been built between the children, staff and Silver Circle committee members through a mutual enjoyment of singing and stories. For the first time, the children played host to the gathering in the nursery playroom and shared all their favourite play experiences with their guests including play-doh, block play and creative art.

Realising the Ambition recognises that “consideration of opportunities in the wider community ensures a play provision which is relevant, challenging and exciting” (p. 46) and a feature of highly effective

practice within HGIOELC is when practitioners “create rich and meaningful opportunities for our children to be active participants in the community” (p.27). Children can benefit from connections made with different members of the community and are supported to learn a range of skills and build knowledge through these new experiences and community interactions.

The article in The Courier can be found at [Crieff nursery kids and Comrie OAPs celebrate friendships \(thecourier.co.uk\)](http://www.thecourier.co.uk).

Well done to our ELC settings who have gained their Emotion Works Bronze Accreditation!

click title to return to top

Across Perth & Kinross, eight of our ELC settings have been embedding the Emotion Works resource, to support the promotion of children’s emotional development.

Methven Primary School ELC
Luncarty Primary School Nursery
Stanley School ELC
Muirton Community Nursery
Our Lady’s ELC
Busy Bees ELCC, Muthill
Blair Atholl Primary School Nursery
UHI Perth Nursery

Congratulations to all!



ELC Maths Improvement Celebration



click title to return to top

Many practitioners from across Perth and Kinross ELC settings attended an event in the City Chambers to celebrate the success of their maths improvement work. They were joined by their managers and leaders who have been supporting their learning and colleagues from Education Scotland.



Use of raw flour

click title to return to top

Following the Care Inspectorate provider update on 30 April, where it was highlighted the **Food Standards Agency guidance regarding the use of raw flour**, Care Inspectorate have received questions and concerns from providers. They understand the importance of addressing these concerns and providing some reassurance to the sector. However, as the regulator, it is their duty to direct providers to relevant guidance, especially when it comes to potential risks to the health of children.

The guidance from the Food Standards Agency states that heat-treated flour minimises the risks associated with raw flour. It also provides information on how to heat treat flour yourself. However, they do recognise that some settings may not have the necessary facilities for

heating flour. In such cases, it is possible to purchase flour that is already heat treated.

This is not an area that inspectors will be considering as part of their scrutiny. When it comes to all activities involving food products, it is essential to adopt a sensible approach to minimise risk so we can ensure children continue to have fun and enjoy the learning experiences this can offer.

Webinar: Exploring health protection guidance for use in children and young people settings, including education

click title to return to top

You are invited to register for our webinar to explore the **Health protection in children and young people settings, including education** guidance which was published by Public Health Scotland in March 2024.

The webinar will:

- cover the role of health protection teams, who they are, what they do and how they can help you
- explore the guidance and what it means in practice
- offer an opportunity to refresh your knowledge on Standard Infection Prevention and Control Precautions (SIPCP) and what it means in practice
- offer an opportunity to ask questions.

Joined by Fiona Browning, Health Protection Nurse Specialist for NHS Grampian. Marie McKerry, Chief Nurse at the Care Inspectorate will facilitate the webinar.

Date: Wednesday 12 June 2024

Time: 18:00-19:30

Please **complete this short form** to register.

It would be helpful if you could take time to read **the guidance** before the webinar.

Questions can be submitted in advance for our panel to answer during the webinar. Please **use this form to submit questions** by

Wednesday 5 June.

The webinar will be recorded and made available afterwards.

Relaunch of the Space to Grow and Thrive resource

click title to return to top

Minister for Children, Young People and the Promise, Natalie Don MSP, attended the relaunch of the Space to Grow and Thrive resource. The minister was joined at Cairellot Nursery in Bishopton by the Care Inspectorate's Executive Director of Scrutiny and Assurance, Kevin Mitchell.

Space to Grow and Thrive supports the delivery of high-quality environments for children attending early learning and school aged childcare (SACC) in Scotland.

The resource incorporates relevant Care Inspectorate guidance and provides a one-stop resource related to both indoor and outdoor settings. It provides a comprehensive and up-to-date framework for planning, designing and delivering high-quality ELC and SACC settings that support children's wellbeing, learning and development.



**SPACE TO GROW
AND THRIVE**
Design guidance for early learning
and childcare and school age
childcare settings



**The newly updated resource can
be found here.**

Me, my family and my childcare setting



click title to return to top

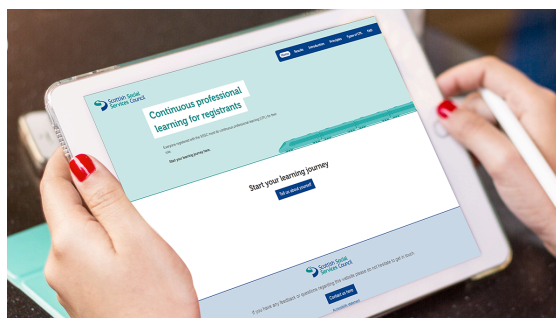
High-quality childcare plays a vital role in making Scotland the best place to grow up.

This practice note aims to focus on the relationships between the child, family and their childcare setting.

Read now



New website to support your continuous professional learning (CPL)



click title to return to top

The SSSC new CPL website is now available to help you find relevant learning opportunities to focus on key skills and knowledge required. The new process means that you will confirm you have completed your CPL every year as part of your annual declaration. You no longer need to complete a set number of hours of learning.

Learning to suit your needs

There are four parts to the new CPL model which align with the new Register parts:

- social worker (including Newly Qualified Social Workers NQSW)
- social care workforce
- children and young people workforce
- Care Inspectorate authorised officer.

To help find the relevant learning for you, there are eight career pathways in each part which link to your role:

- I am new to my role
- I want to return to practice after a career break
- I want to complete a professional qualification
- I want to keep my practice up to date
- I want to specialise
- I want to change jobs
- I want to retire
- I want to take a career break.

For the **social care and children and young people workforces** there are seven core learning elements:

- rights based and ethical practice
- communication and relationships
- wellbeing and support
- protection
- knowledge for your role
- reflective practice
- leadership and quality assurance.

[Visit the new CPL website and begin your new CPL journey.](#)



Minister launches new Codes for social service workforce

click title to return to top

The Minister for Children, Young People and Keeping The Promise, Natalie Don MSP, has launched the revised SSSC Codes of Practice for Social Service Workers and Employers during a visit to an early years' service in Edinburgh.

Meeting staff and children at the Smilechildcare Under 3s service, Ms Don said she was delighted to launch the new Codes that set out the standards required of workers and their employers.

Professional standards

She said:

'The updated Codes set out clearly the standards of practice and behaviour expected of everyone working in social services in Scotland.

'The Codes now have a greater focus on relationships, staff wellbeing and trauma informed practice. They will play an important role in our ongoing work to Keep the Promise, by making sure they support kind and compassionate care that respects the rights of individuals.

[Read more on how these changes affect you](#)

Planned downtime for all SSSC systems and website

Our website, phones and MySSSC will be unavailable from 5pm on Tuesday 28 May until 10am on Monday 3 June.



Training Offer 2024-25

Our teams are currently working very hard to pull together our training offer for 2024-25. Please visit the [ECS Learning Hub](#), where you will find all the training on offer soon.

Supporting the Learning and Development of Boys in ELC

click title to return to top

Did you know that there is an achievement gap between boys and girls in ELC and into primary one across Scotland, particularly within the areas of language, literacy, attention, and social & emotional development? These gaps persist or widen as children progress through their school years so it is important that ELC settings provide high quality and inclusive experiences to support and engage boys effectively and give them the best start.



The Early Years team will be delivering an in-person training session based on this topic during the Inservice day on Tuesday 13th August from 9.30am-11.30am at 2 High Street, Perth which will provide practitioners with a research-based understanding of how boys and girls learn and develop differently, and ways in which experiences, spaces and interactions can be enhanced to promote the attainment of boys. There will also be an opportunity to network in groups to support the use of Developmental Milestone Data to support individual boys' progression based on the learning within the session.

SSSC open badges



click title to return to top

The SSSC produce a suite of Open Badges that recognise learning and achievements. These badges are helpful to use as part of your training and development and to evidence your continuous professional learning (CPL).

Open Badges are digital certificates recognising learning and achievement. If you can demonstrate that you've learned from materials produced by the Scottish Social Services Council you can earn an Open Badge.

Find out more [here](#).



ELC Senior Practitioner Training



click title to return to top

Huge congratulations to our latest cohort of practitioners who completed the Senior Practitioner Training in May 2024! Well done to you all!

The group attended 6 training sessions throughout the year and completed tasks between sessions to consolidate their learning and share practice with each other. The sessions included defining roles and responsibilities of a senior, becoming a pedagogical leader, quality improvement and self-evaluation and leading and managing people through change. The final session was an opportunity for the group to reflect on their learning journey throughout the programme and celebrate their successes and hard work.

Practitioners gave their feedback from the training and offered their key highlights.

“Gaining confidence and taking part in professional discussions.”

“Sharing ideas and hearing about other people’s experiences.”

“Self-Evaluation has provided an insight into the importance of high quality Early Learning and Childcare.”

The Importance of the Communication Champion role in PKC

click title to return to top

We want to thank all our Communication Champions for attending or viewing training sessions this year. Your hard work to revisit the training, accessing the resources shared is making a difference. Your role to increase practitioners, skills knowledge and confidence to embed strategies that will improve language learning is key and we recognise this hard work.

Perth & Kinross colleagues attended an event on Tuesday 21 May led by Education Scotland Regional Early Speech & Language Lead

Louise Illingworth.

The event highlighted the importance of creating the best conditions to improve children's speech, language, and communication within Scotland. Information about the positive work being undertaken in PKC over the past few years since the introduction of Communication Champions was shared and was very well received.

Regional Early Speech and Language Leads Event 21 May 2024

This event emphasised how critical this aspect of child development is and we want all our settings to feel equipped to deliver the highest standards of quality that will improve language learning resulting in positive outcomes for children and their families.

Now is the time to consider if your Communication Champion will remain in post into the new session, and what training needs or support is needed. We will continue to lead collaborative conversations with NHS Speech and Language supporting the session. We also want to ensure settings who have new practitioners are directed to the right support and training in this key role.

Training dates for 2024 -25 will be added to the ECS Learning Hub Don't forget the [ELC Communication and Language \(padlet.com\)](#) contains a wealth of training materials.



Support to access Award-bearing Qualifications

click title to return to top

The Early Years and Childcare Service, through the Childcare Strategy Team can confirm that there will be financial support for professionals working in an Early Years or Childcare setting for 2024/25.

This funding will support individuals registered with the Scottish Social Services Council to meet any requirements or conditions of their registration.

Full funding will **not** be made available, and individuals will be required to apply for an Individual Training Account (ITA) or a Student Awards Agency for Scotland (SAAS) account and make a personal contribution of either 15% or 25% towards the cost of their course.

Funding is limited and applications are now open, with a closing date of 31 January 2025.

2023/23 we funded 35 individuals to undertake either an SVQ Social Services, Level 3, Children and Young People, or BA Childhood Practice Units, or a PDA.

If you are required to undertake a qualification, please visit the [PKC website](#) to find out more.



Food for Thought Education Fund 2024 - 2025



click title to return to top

The Food for Thought Education Fund gives financial support to develop Food and Health as a context for learning. The fund aims to improve practitioner confidence in providing progressive, high quality, skills based learning experiences which help to embed food education into the ethos of the establishment. It also provides an opportunity to

plan and implement learning experiences which build sustainability and capacity for future development.

[Find out more](#)



Education and Learning Summer 2024 Holiday Activities Offer

click title to return to top

This year, we have planned an Education and Learning service wide approach to supporting our children and families throughout the summer holidays 2024.

This offer is being piloted in the Perth city area, Rattray and Crieff. Many of the activities are planned within these localities however, there are opportunities across Perth and Kinross in other localities too. There will be a main session daily which is open to all families, no pre-registration will be required. Families can turn up on the day and join in the fun. There will also be smaller group sessions in different localities which will require pre-registration in advance.

Further information on dates, times and venue of the sessions will be coming soon.

Summer Fun in Kids Clubs and Wraparound Care

click title to return to top

Kids Club and Wraparound Care staff have recently been co-creating a range of exciting activities and themed days with the children in the services.

Back by popular demand are Water Fun Days, which include paddling pools, water balloons, water games and challenges.

Another favourite back on most holiday planners is Den building, with fire bowls, with children requesting toasted marshmallows.

Summer 2024 has a number of sporting events such as Wimbledon, the UEFA European Football, Tour de France, The Open and The Olympics, so a range of tennis, football, wheeled days, golf and sports will feature on the holiday programmes.

Children must be registered and booked in advance to use the services,

Blair Kids Club, Milnathort Kids Club, Oakbank Kids Club and Pitlochry Wraparound Care provide childcare for children going into Primary One – 14 Years.

Inch View Wraparound Care, Letham Wraparound Care, Luncarty Wraparound Care, and St Dominics Wraparound Care, provide childcare for children aged 3 years to 12 years.

To find out more about each service and what is going on, or to find out how to book please visit the [PKC website](#) from 1 June 2024.

Playday 2024

Play - the culture of childhood

Supporting play, fun, and friendships



The banner is divided into several colored sections. At the top left is a green section with the Playday logo. To its right is a red section with text and the website URL. Below these is a large blue section with the theme text. At the bottom are three smaller sections: a pink one with the date, a yellow one with a green circle, and a red one with social media hashtags.

Playday

To find out more and to join in the fun,
please visit:
playday.org.uk

This year's theme is...

Play – the culture of childhood
– Supporting play, fun and friendships

07 Wednesday
August 2024

#Playday2024
#PlayAndCulture



Share your summertime activities in Perth & Kinross with us

click title to return to top

Is your organisation planning on running activities during the school summer holiday period?

If yes, then please [share your information](#) with us.

The [Information Service](#) will share your detail across social media, and to families who approach for information.

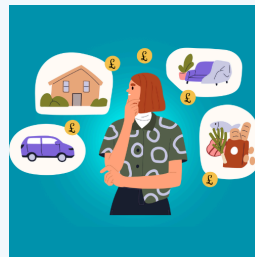


ELC Glow reminder

[ELC Glow](#) is available for all Local Authority ELC colleagues and in our Funded Providers. Should you wish to request access or remove a colleague who no longer works in your setting please complete this [form](#).

If you are a Funded Provider and require additional Glow id's please also complete the same [form](#). If you have any issues regarding ELC Glow, access to ELC Glow please contact Lyn Smith, elc@pkc.gov.uk.

Please remember when accessing ELC Glow, you must be added to the site, and use your glow id to access. Any issues please contact Lyn on the email above.



Struggling with the cost of living?

You received this email because you have subscribed to email updates from Perth and Kinross Council.

[Update your preferences or unsubscribe here](#)



Comhairle Pheairt
is Cheann Rois



Perth and Kinross Council

2 High Street, PH1 5PH, Perth