



Education and Learning
Improving Lives Together
Ambition | Compassion | Integrity



NEWSLETTER

ELC Newsletter, Issue 34, September 2024

Contents

Family Advice and Community Connections Service (FACCS)

Launch of UHI Early Years Maths Tales Bags

Paediatric Advice Line

Resources to support Communication with Families with EAL

Practitioner Fest 2024

October Holiday Childcare

Supporting services to support families over the holiday periods
from April 2023 – March 2024

Supporting professionals working in Early Learning and Childcare

Summer Holiday Offer Update 2024

P1 Transition Support

Perth & Kinross Child Protection Committee Autumn/Winter
Newsletter

Training Offer

First Aid

Care Inspectorate

Get confident with being confidential

SSSC

New staff must now apply to register within three months

Funding

Tesco Stronger Starts

Perth & Kinross Warm Welcome Fund

Family Advice and Community Connections Service (FACCS)



Scan for more information

Families of Perth and Kinross, we're here for you!

Family Advice and Community Connections Service (FACCS)

Personalised advice and support for families | Assistance when you need it most | Available to all families with children under 18 | Flexible meeting locations | Free and confidential service

Get in touch today

Tel: 0808 196 7292
Email: faccs@aberlour.org.uk

aberlour.org.uk
Scottish Charity no: SC007991




aberlour
Scotland's children's charity



[Back to top](#)

Launch of UHI Early Years Maths Tales Bags



4th September 2024

Launch of UHI Early Years Maths Tales Bags

During Maths Week Scotland 2024, the UHI STEM Outreach Programme will be launching their new Maths Tales Bags for Early Level learners.

The aim of the bags is to support the development of math concepts through stories. As well as providing the learners with a story and fun resources to complement the story, there are suggested activities and questions to support Early Years staff to explore early maths concepts.

The bags focus on play and early numeracy, with very little prior knowledge or experience necessary. They are accessible to all, designed to be explored by young people in whatever way is best at their age and stage of development.

The Maths Tales Bags aim to:

- Increase maths understanding for early level learners.
- Boost staff confidence in teaching maths.
- Make maths fun and interactive.

[Read more](#)



[Back to top](#)

Resources to support Communication with Families with EAL

Perth and Kinross Council is moving away from using Google products including Google Translate, which some practitioners may use to support communication with families who may not speak English as their first language. Parent/carer engagement and robust communication is key to building positive relationships and supporting parents to feel connected to their child's ELC setting. It is therefore essential that practitioners seek ways to ensure that all families are meaningfully included and their participation sought out and valued (UNCRC, Article 5, the right to parent and family guidance).

Harriet Benbow, Digital Learning ESO, has recommended the following products should you require simple translation services to support your communication methods with families in your setting:

- Microsoft Translator App: [Microsoft Translator for Education - Microsoft Translator](#)
- Office Lens, which will scan and translate text: [Office Lens for Windows - Microsoft Support](#)

There is also a recorded training session that took place on using Powerpoint Live with Captions which can be useful when having conversations with parents: <https://youtu.be/ag26sazUKJM>.

Please see [me-my-family-and-my-childcare-setting.pdf](#) (careinspectorate.com) for further information on building strong relationships with families.

[Back to top](#)

Paediatric Advice Line



NHS Tayside CHILDREN & YOUNG PEOPLE'S THERAPY SERVICES
ADVICE LINE
 (For parents, carers and professionals)

01382 740317
 Tuesdays 9.30am to 11.30am
 Thursdays 4.00pm to 6.00pm



SPEECH & LANGUAGE THERAPY

Do you have a concern about a child or young person's speech, language or communication?

We can offer a wealth of information including advice, guidance, reassurance or strategies on speech, language, communication and eating and drinking.



OCCUPATIONAL THERAPY

Do you have concerns regarding a child's daily occupations?

We can offer universal advice, strategies & reassurance to help you support children and young people who may be struggling with self-care, play &/or leisure activities at nursery, school or home.



PHYSIOTHERAPY

Do you have concerns about a child or young person's physical development or mobility?

We can offer practical therapy advice, information and reassurance about concerns such as: delayed physical development; children that move differently or not able to keep up with peers; injuries that are not improving.



[/CHATAYSIDE](#)



[/TAYSIDECYPOT](#)

[/NHSTAYSIDECYPPS](#)



Practitioner Fest 2024

Tickets are available for Practitioner Fest - “an exciting outdoor festival for educators to discover the joys of outdoor learning. Unlock new ideas and strategies for taking your children outdoors.”

The festival will take place in Fife during the weekend of the 4th October with optional workshops to attend, and a festival village including stalls run by organisations such as the Care Inspectorate and Play Scotland. The festival will provide you with an opportunity to expand your knowledge, engage in professional discussion and network with other practitioners.

There is even the opportunity to camp out for that authentic festival experience.

More information and tickets can be found at [Practitioner Fest 2024 | Little Bugs Nursery \(littlebugsnurseryevents.com\)](#), with the opportunity to secure a discount for group bookings.

[Visit Practitioner Fest](#)

October Holiday Childcare

Kids Clubs and Wraparound Care are preparing for a busy action-packed October holiday programme.

If you are looking for childcare for children aged 3 – 12 years, Inch View, Letham*, Luncarty, Pitlochry, St Dominic’s Wraparound Care services are open from 8am – 6pm.

If you are looking for childcare for children from Primary 1 – 14 years then Blair, Milnathort, Oakbank Kids Clubs are open from 8am – 6pm.

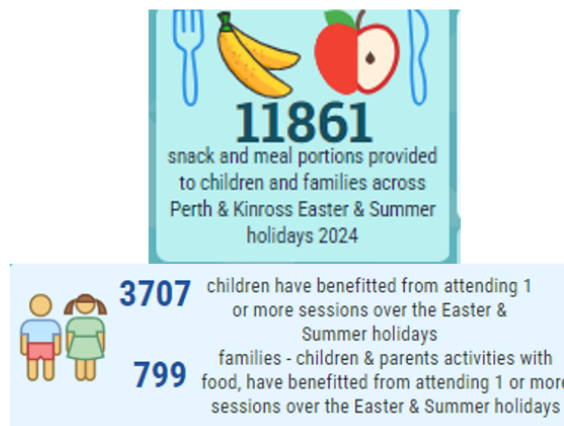
* **Letham Wraparound Care*** Letham Wraparound Care opened April 2024, providing 16 holiday spaces for children aged 2 – 12 years.

You do not need to access the services during term-time to attend during holiday periods.

[Book now](#)

[Back to top](#)

Supporting services to support families over the holiday periods from April 2023 – March 2024



This fund is for the targeted provision of accessible activities, childcare and food for children 2 - 16 years from low-income families during the school holidays. Activities supported by this funding are for child/ren or the whole family. The targeted funding supported the six priority groups highlighted in the [Tackling Child Poverty Delivery Plan](#).

The Childcare Strategy Team and the Parenting and Family Learning Team carefully considered the applications from all organisations to ensure there was a spread across Perth and Kinross.

[More information](#)

[Back to top](#)

Supporting professionals working in Early Learning and Childcare

During 2023/2024 the Childcare Team financially supported 32 individuals to undertake an award bearing qualification.

- 10 undertook one or more BA Unit
- 21 undertook the SVQ level 3 Social Services (Children and Young People)
- 2 undertook the PDA

Applications are currently being accepted for 2024/2025 if you or one of your team working in Early Years and Childcare are required to undertake a qualification for your role within the profession or the enhance your current qualifications.

To apply or find out more please visit the PKC website

[More Information](#)

[Back to top](#)

Summer Holiday Offer 2024 Update



An Education and Learning service wide holiday offer was planned to provide support for children and families throughout the summer holidays 2024. This was piloted in Perth City including ELC Westbank, Rattray and Crieff as a continuation of the small trial from summer/October 2023 holidays. Most of the activities planned were within these localities however, there were opportunities across Perth and Kinross in other localities too. 413 families attended these free sessions and the feedback was positive about the benefits to the family of attending the activities and groups on offer.

The Early Years Family Learning Practitioners delivered a range of P1 transition support which was delivered alongside the transition programme offered within the setting/school. The sessions were well attended and offered a range of activities that parents could replicate at home to help support their child feel more prepared for P1.

[Find out more](#)

[Back to top](#)

Perth & Kinross Child Protection Committee Autumn/Winter Newsletter



click on image to read

[Back to top](#)



Training Offer 2024

remember to visit www.ecslearninghub.org.uk for more listings[+ Add event](#)

 Play on Pedals Tue, 24 Sept, 09:00	 Child Protection Basic Awareness Tue, 24 Sept, 18:30	 Supporting the Learning and Development of Boys in the Wed, 25 Sept, 18:00	 Digibyte: Apple Green Screen Thu, 26 Sept, 16:00
 Risk in Play Thu, 26 Sept, 18:30	 Positive Relationships Mon, 30 Sept, 18:30	 Exploring the Crucial Developmental Stages in Early Tue, 1 Oct, 16:00	 Loose Parts Play Tue, 22 Oct, 16:00
 Loose Parts Play Tue, 22 Oct, 18:30	 Introduction to Pre Registration for Childminding Thu, 24 Oct, 09:30	 Early Learning and Childcare Induction Thu, 24 Oct, 16:00	 Introduction to Pre Registration for Childminding Thu, 24 Oct, 18:30
 Pre Registration for Childminding Thu, 31 Oct, 09:30	 Pre Registration for Childminding Thu, 31 Oct, 18:30	 Child Protection Officer Training Mon, 4 Nov, 09:30	 Digibyte: Translation Tools Tue, 5 Nov, 16:00

Remember to check the ECS Learning Hub for all the latest training sessions on offer.

[Visit the ECS Learning Hub](#)

[Back to top](#)

First Aid

Evenings 2024 Dates for Emergency Paediatric First Aid at Work

6.30pm – 9.30pm North Inch Community Campus

22/23rd October 27/28th November

Saturday 2024 Dates for Emergency Paediatric First Aid at Work

9.30am – 4.00pm Training Room 2, Friarton

Nov 2nd, 2024

Jan 18th, 2025

Mar 1st, 2025

May 10th, 2025

Weekday 2024 Dates for Emergency Paediatric First Aid at Work

April: 23rd/24th/30th

May: 2nd/7th/9th/23rd/30th

June: 6th/25th/27th

July: 2nd/3rd/4th/9th/11th/23rd/25th

August: 6th/8th/28th/29th

September: 3rd/5th/10th/17th

October: 1st/3rd/8th/10th/22nd/23rd/24th

November: 12th/13th/14th/19th/20th/21st

December: 3rd/4th/5th/10th/12th

[Book now](#)

Trauma Informed Practice Training

Aimed at frontline staff and managers in the public, private and third sectors across Perth & Kinross. By the end of the course, participants should:

- Have better recognition and understanding of the short and long term impacts of trauma
- Have increased awareness in identifying the immediate needs of trauma affected people
- Have increased understanding of supporting individuals affected by trauma to safely disclose
- Be more knowledgeable about the importance of encouraging and/or supporting people's recovery following trauma and
- Have increased awareness of the needs of workers exposed to the details of trauma experienced by others.

Dates:

- Thursday 24th October 2024 from 9.30-12.30pm
- Thursday 31st October 2024 from 9.30-12.30pm
- Thursday 7th November 2024 from 9.30-12.30pm
- Thursday 14th November 2024 from 9.30-12.30pm
- Friday 24th January 2025 from 9.30-12.30pm
- Friday 7th February 2025 from 9.30-12.30pm
- Friday 21st February 2025 from 9.30-12.30pm
- Friday 7th March 2025 from 9.30-12.30pm

If you would like to book a place, please contact us via this email address (admin@rasacpk.org.uk).

Solihull Approach Foundation Training

The Solihull Approach is a framework which helps provide a practical way of working with and supporting families. It aims to increase the emotional health and wellbeing of children and their families, ensuring children have a good emotional start in life whilst supporting parents in a creative and consistent approach. The Solihull Approach helps parents process their own emotions and anxieties allowing them to

cope and focus more clearly on how to assist their children's emotions, anxieties and behaviours.

To complete the foundation training there is a minimum of 12 hours of learning, this includes:

Training Group 1

3 hour e-learning, this should be completed before attending the first session, this can be completed in segments.

Session 1 – 17th October 2024 9.30-16.30 in person session, Perth Grammar School.

1 hour learning to be completed before session 2.

Session 2 – 30th October 2024 18.00-21.00 virtual MS Teams

Training Group 2

3 hour e-learning, this should be completed before attending the first session, this can be completed in segments.

Session 1 – 15th November 2024 9.30-16.30 in person session, Goodlyburn PS

1 hour learning to be completed before session 2.

Session 2 – 27th November 2024 18.00-21.00 virtual MS Teams

Aims

1. to introduce practitioners to the Solihull Approach model as applied to working with babies, young children, young people and their families.
2. to introduce practitioners to the developmental effects of childhood trauma in relation to working with children and their families.
3. to introduce a model for understanding the impact of relationships on health and wellbeing and the impact of adverse childhood experiences on health and wellbeing.

Outcomes

1. Practitioners will be more confident to support children, young people and their families.
2. Practitioners will be more aware of the impact of trauma.
3. Practitioners will have an effective and consistent approach across agencies as a shared framework.

[Back to top](#)

[Book now](#)



Get confident with being confidential

Care Inspectorate have designed new posters for services to display in their settings beside their registration certificate.

When people complain anonymously, it is much harder for them to investigate to help improve things as they can't verify information. CI want to encourage people that they can complain to them confidentially and that their personal details are safe. There are two posters available to download, one for early learning and childcare/children and young people's services and another for adult and older people's services. You can download the poster that is most suitable for your service from the links below.

Poster for early learning and childcare, and children and young people services



[Back to top](#)



New staff must now apply to register within three months



Since June new staff need to apply for SSSC registration within three months of starting their role. This is one of the changes to registration that came into effect on 3 June 2024.

Employers are responsible for making sure new staff apply in time and that they're registered within six months.

You should make sure you provide new staff with all the details they need to apply for registration as part of their induction and support them to complete their application.

[Read more](#)



[Back to top](#)



Tesco Stronger Starts

The scheme is open to all schools, registered charities and not-for-profit organisations, with priority given to projects that provide food and support to young people.

Examples of eligible applications with a focus on food security, children and young people could be:

- A school providing pupils with food for breakfast clubs or snacks throughout the day.
- A school wanting to buy equipment for outdoor or indoor activities.
- A school wanting to develop a food growing area.
- A school supporting an after school club.
- A voluntary organisation working with families to run a food bank.
- An organisation addressing holiday hunger.
- A healthy eating project that supports families to cook healthy meals on a budget.
- A Brownie or Scout group needing funding for new play equipment or activities.

[Find out more](#)

[Back to top](#)

Perth & Kinross Warm Welcome Fund

Information for Applicants and Invitation to a Proposal Development Workshop

Community Learning
Development are pleased to
invite Community Groups or
Organisations in Perth & Kinross
to Proposal Workshops for the
Warm Welcome Fund.



This workshop aims to bring together interested groups to collaborate, plan and strengthen their proposals together. This will involve group sharing of ideas and feedback, with a focus to refine their offer and find synergies between projects.

If your group or organisation would like to apply for funding, we strongly encourage the presence of a representative in the relevant ward area workshop below.

To help with preparations please complete the form overleaf and bring it to the workshop. Successful projects will receive the funding award in

late October/Early November.

Projects, which have already benefited from the warm welcome fund in 2023/24 may apply only if they returned their 2023/24 Funding evaluation.

Please note that funding is only available for the provision of warm spaces this year and applicants must demonstrate how support services will be incorporated to provide support and guidance to the most vulnerable attendees. e.g. Welfare Rights, Home Energy projects. Should you have any questions, please contact us at

Ward Area	Date	Time	Venue	Funding available
1. Carse of Gowrie	Tuesday 22 nd October	4.00pm – 6.00pm	<u>Madoch Centre</u> , St Madoes	£13,137.69
2. Strathmore	Monday 14 th October	4.00pm – 6.00pm	Strathmore Community Hub	£20,480.28
3. Blairgowrie & The Glens	Wednesday 9 th October	4.00pm – 6.00pm	Community Connect @ Rattray, High St, Rattray.	£14,902.45
4. Highland	Tuesday 15 th October	2.00pm-3.30pm	Breadalbane Community Campus	£11,827.37
5. <u>Strathtay</u>	Tuesday 22 nd October	2.00pm-3.30pm	Dunkeld Community Learning Office, Birnam Arts	£16,298.90
6. Strathearn	Wednesday 16 th October	10:30am-12.00noon	Strathearn Community Campus	£13,804.11
7. <u>Strathallan</u>	Thursday 17 th October	10:30am-12.00 noon	Aberuthven Church Park Place Aberuthven PH3 1HU	£15,537.08
8. Kinross-shire	Wednesday 16 th October	6.30pm - 8.30pm	Loch Leven Community Campus	£18,706.24
9. Almond & Earn	Thursday 17 th October	6.30pm - 8.30pm	Oudenarde Community Cabin	£13,463.61
10. Perth City South	Wednesday 9 th October	4.30pm-6.00pm	Glenearn Community Campus	£11,047.63
11. Perth City North	Thursday 10 th October	4.30pm-6.30pm	The Hub, Letham	£16,400.91
12. Perth City Centre	Wednesday 16 th October	6.30pm-8.30pm	Civic Hall, 2 High St Perth	£33,393.73

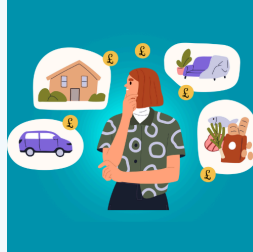
[Email for an application](#)

[Back to top](#)

Early Learning and Childcare

ELC@pkc.gov.uk

www.pkc.gov.uk



Struggling with the cost of living?

You received this email because you have subscribed to email updates from Perth and Kinross Council.

[Update your preferences or unsubscribe here](#)



Comhairle Pheairt
is Cheann Rois



Perth and Kinross Council

2 High Street, PH1 5PH, Perth