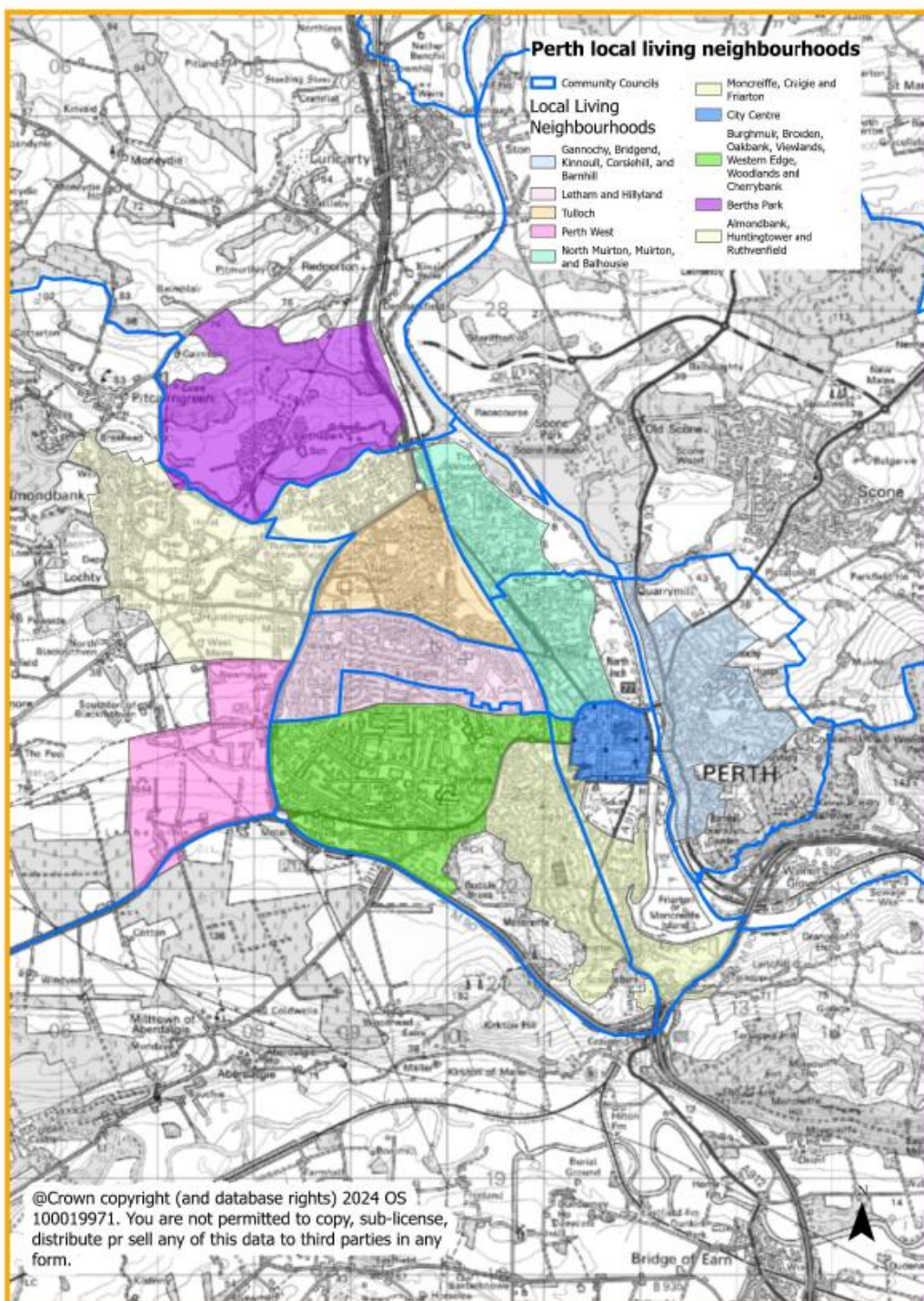


## Community Council: Letham

A different approach has been taken for Perth City, as the ward and community council areas do not always reflect the settlement, nor the neighbourhoods within it. Rather than using Community Council areas, because Scottish Government National Planning Framework 4 (NPF4) says LDPs should support local living/20-minute neighbourhoods it was considered that identifying local living areas within Perth city (taking account of Community Council areas where possible) would be a better focus for analysis. Letham was one of the local living areas identified, the map below shows how Perth City was split into local living areas for the BPC analysis.

Map 1: Perth Local living neighbourhoods (also showing community council areas)



## Perth Local Living neighbourhoods:

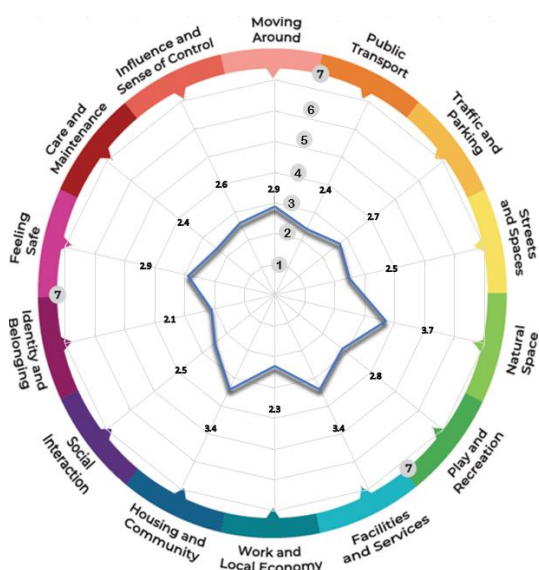
### Letham and Hillyland

This Local Living area is largely within the Letham community council area, although it also takes in part of Perth South on the southern edge up to Burghmuir Road. It borders the A9 to the west, Muirton to the east, and Tulloch to the north and the Burghmuir, Broxden, Oakbank, Viewlands, Western edge, Woodlands and Cherrybank Local Living area to the south. The Letham and Hillyland area is relatively densely populated, and residential suburban, lying to the north west of the city centre. It is a suburban community that was established post war and has some local shops on Rannoch Road, and has a newly refurbished Letham4all community centre including café, gym, study and community spaces, centrally located on Tweedsmuir Road, West Mains Road has a Coop, and it lies adjacent to the Tesco on Crieff Road. It has some institutions within it, with 2 primaries, Letham primary school to the west, Goodlyburn Primary to the east, and also has Perth College to the east which lies off Crieff Road. A lot of the open spaces are associated to these institutions, although there is also the Seven acres park which has good pitch facilities, and the large cemetery which has the neighbourhood Jeanfield Park adjacent to it.

Specifically for this area held 2 drops in events Perth Central and 1 conversation event. Together with online surveys we received feedback specific to this local living area from 9 respondents. We received feedback from the public at large as well as from the following groups:

- children and young people
- elderly
- disabled
- business representatives
- LGBTQI+
- minorities
- women issues

Below is the place standard score wheel for Letham and Hillyland. Note that due to the tailored nature of conversations not all participants completed scores, this includes drop in events. Note that place standard scores are out of 7. Seven is where the least improvement is needed, and 1 the most.



## Summary of feedback for each topic/question (Letham and Hillyland)

### Moving Around (2.9)

Safe during day but not at night /lighting inadequate. Surfaces in general good for walking (although could be better maintained) not so much for wheeling/skating. Sometimes crossing lights don't work, and there is an issue with pavement parking, whilst rails on steeper slopes are needed. Need segregated cycle routes, and cycle parking facilities.

### Public Transport (3.4)

Need for real time info at bus stops, and seating at bus stops. Good routes but poor service and not regular/reliable enough.

### Traffic & Parking (2.7)

Parking on pavements is an issue, and Garth Avenue needs better surfacing. Low traffic speed generally needed, crossing is difficult, and in comparison to Letham, Muirton is well designed and keeps traffic speed down. Letham shops has disabled parking, but perhaps needs more.

### Streets, Squares & Buildings (2.5)

Generally ok, but not many unique attractive buildings, and Strathtay road blocks are poor design and do not make best use of the site. Also need for more trees/planting for air quality, biodiversity and wellbeing, and more street art beyond the graffiti wall. PKC building maintenance needs to improve and need house numbering to be visible.

### Natural Spaces (3.7)

Easy access to Welshill graveyard and the lade is nearby, and some smallish parks but not connected to nature and not much provision for nature in Letham. A community wild garden and tree planting scheme would be very beneficial, as would seating in nature areas. Edges of Perth good for walking but not so pleasant in Letham, and people don't know where to access routes, or rights to do so.

### Play & Recreation (2.8)

Mixed views on the quality, but there is no large greenspace, the pitches are in poor condition, and anti-social behaviour issue is an issue in parks. Letham park climbing wall got broken, and is not there anymore. Nearby new house farm woods are good for informal play. 32 football teams in Letham (Culture + Sports engagement 2022).

### Facilities & Services (3.4)

Good shops with community support, and the UHI is really improved. However Letham needs more recycling spots, and you need to go into town for dentist/doctors/cafe, plus the cost of facilities/services not manageable for all, and it is difficult to find spaces for clubs and to set up clubs.

### Work & Local Economy (2.3)

UHI has good opportunities, but there is not a good range of opportunities.

### Housing & Community (3.4)

Kind and helpful neighbours, and Letham 4 all is good, and reasonable mix of size and type, although not enough affordable to meet needs. Issues with stock includes energy efficiency, sound proofing. There is need for thorough independent assessment of condition. The process to seek health related adaptations is too onerous.

### Social Interaction (2.5)

Letham 4 all, climate café, swap shop, residents group, Welcome Inn provide opportunities, but it is not so good for people who can't get out and about, and need better advertisement and more reasons to come together. More benches sought, and a more welcoming community centre, which is easier to access. There is some anti-social behaviour, and police presence is limited.

### Identity & Belonging (2.1)

Feel Perth has lost its standing to Dundee, but there is a good community energy and generally strong Letham identity which would be improved by better services and amenities and greenspaces.

### Feeling Safe (2.9)

Pretty mixed response, some feel safe with a feeling of people looking out for each other. However, there is an issue with anti-social behaviour, one hot spot is outside the shops, and police presence is limited. Need to have places to keep young people out of mischief, improve police visibility, and evict people when necessary.

### Care & Maintenance (2.4)

Needs attention, litter problem, uneven and rough pavements and paths, roads and drainage issues, and housing maintenance concerns. Need for proper surface and lighting etc on the area between Firbank road and Cargill place, and more recycling areas.

### Influence & Sense of Control (2.4)

Issues raised with Councillor and MSP, but difficult to get action, and area does not have a community council. Need to get more people engaged locally to take things forward and promoting good things that are being done. Work on housing not carried out to good standard by private company on behalf of PKC, and PKC have not checked it is ok.