

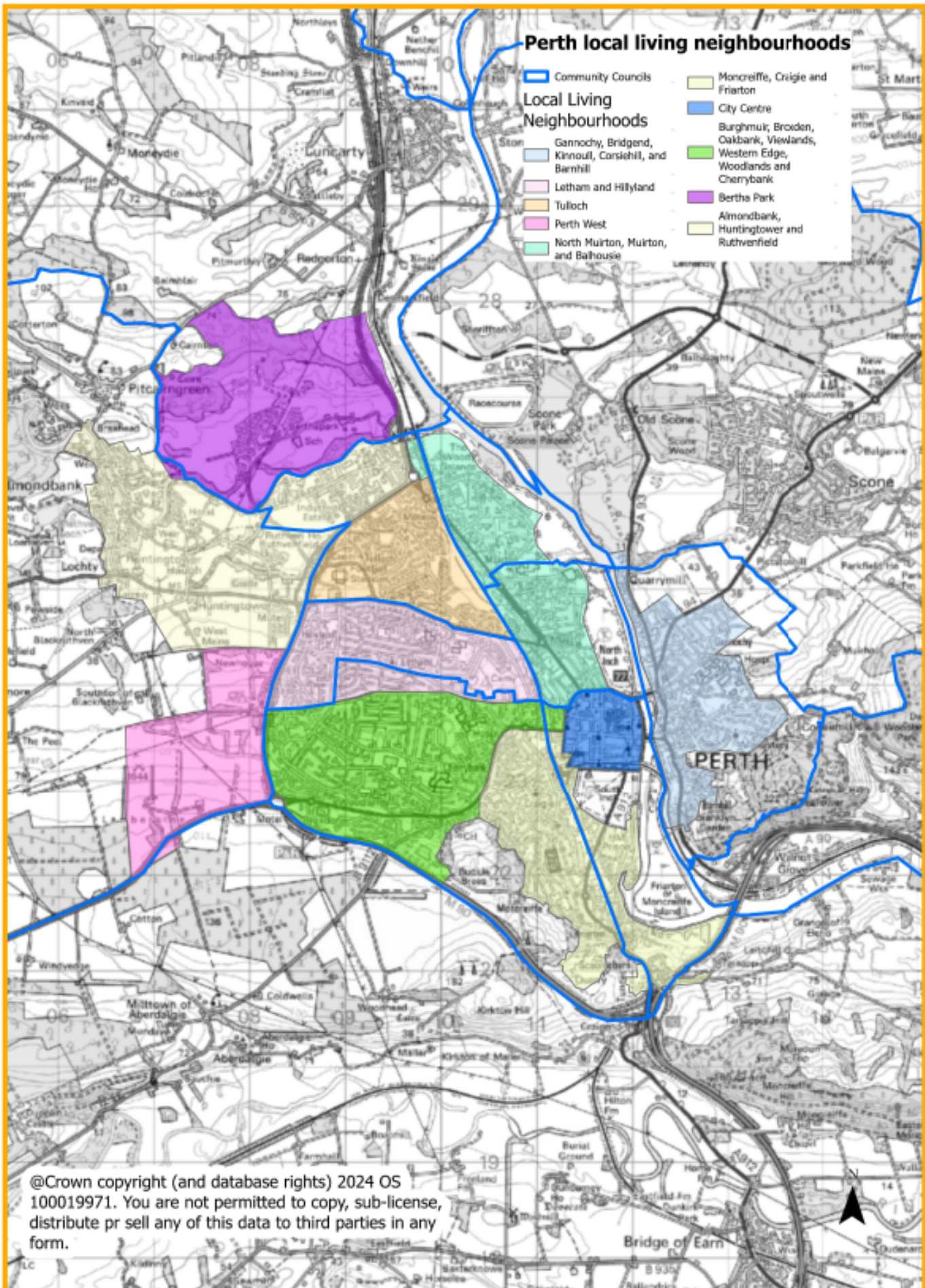
Community Council: Luncarty, Redgorton and Moneydie

The Community Council area includes the village of Luncarty, and nearby hamlets of Redgorton and Moneydie. Recent dualling and realignment of the A9 trunk road has taken place, as well as the Cross Tay Link Road being built with an expected opening date in 2025. The area is principally served by Perth City. There is a large-scale housing site allocated to the south of Luncarty.

The Community Council area also includes the Bertha Park strategic development area. The Plan contains long-term proposals to develop new sustainable communities and provide a long-term supply of development land extending beyond 2040. Bertha Park lies to the north of the city, north of the A9, and Inveralmond Industrial estate, and bounded by the A9 to the east, Almondbank to the west, and whilst it has a rural boundary to the north. Over time it will incorporate the delivery of private and affordable homes estimated in excess of 3,000, 2 village cores either side to the west and east of the Cross Tay Link Road (CTRL), secondary/primary school, employment land including park and ride, landscaping and open space. At the moment there are around 500 homes, a high school, and 5 non-residential uses at ground floor, including shop, café, community hub, and pharmacy, and some open space provision including play area and SUDs pond.

A different approach has been taken for Perth City, as the ward and community council areas do not always reflect the settlement, nor the neighbourhoods within it. Rather than using Community Council areas, because Scottish Government National Planning Framework 4 (NPF4) says LDPs should support local living/20-minute neighbourhoods it was considered that identifying local living areas within Perth city (taking account of Community Council areas where possible) would be a better focus for analysis. Bertha Park was one of the local living areas identified, the map overleaf shows how Perth City was split into local living areas for the BPC analysis.

Map 1: Perth Local living neighbourhoods (also showing community council areas)



A drop in place standard session was held in Luncarty where there 2 responses. For Bertha Park we received feedback from 16 respondents, 15 of those were provided from a conversation event supported by the Bertha Park Residents group. Although we did a session with the secondary school, the pupils either focussed comments on Perth in general, or the area they lived outwith Perth. We received feedback from the public at large as well as from the following groups:

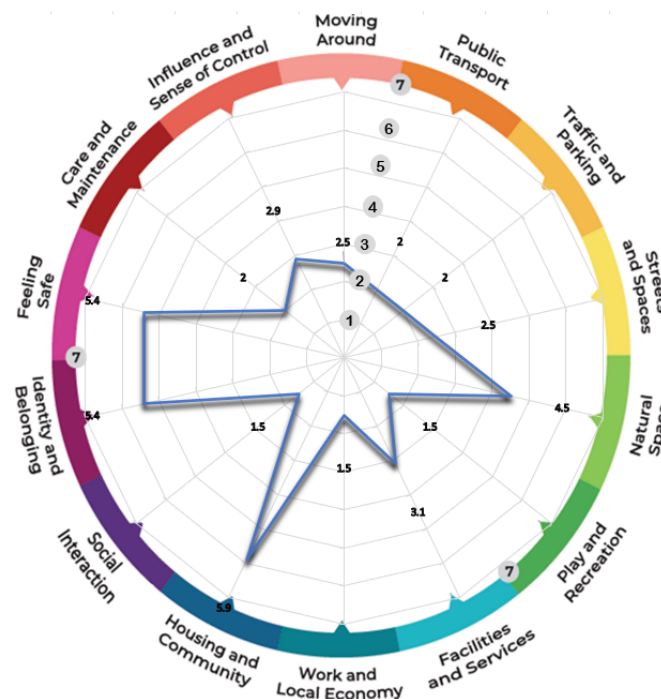
- representatives from community council, and other community bodies
- disabled
- business representatives

Place Standard Scores

Note that due to the tailored nature of conversations not all participants completed scores, this includes drop in events. Note that place standard scores are out of 7. Seven is where the least improvement is needed, and 1 the most.

Luncarty, Redgorton and Moneydie Community Council Place Standard Scores

(Bertha Park residents only)



1. Moving Around (2.5)

It is noted that it is really easy to move around in Luncarty for walking, cycling and with a pram.

At Bertha Park, at the roundabout there is not a clear path to traverse across to the bus stop, and there are few resting options. The recreational routes are liked, but there are barriers for people with disabilities with no path network for use by less abled/pram users, the path near the pond is boggy with rocks difficult, and it is a stoney pathway to Almondbank. Bertha Park has no designated cycle paths.

2. Public Transport (2)

At Luncarty, shuttle bus issues identified due to A9 roadworks.

For residents of Bertha Park, timetable is not compatible with people's needs (early/late/weekend service/regularity), and too few stops only one so far, plus there are concerns about the future of the bus service after 2024. Lack of service discriminates against certain groups (older people, disabled people) and limits support to businesses in city centre. The main hub is Broxden to travel out of the town but there is no direct service from Bertha Park to Broxden or Perth railway station.

3. Traffic & Parking (2)

Luncarty - no comments.

Bertha Park - Speeding encouraged by road design (straights), traffic calming measures required and there is only one safe crossing at the school. There is poor road markings /traffic/parking management and need 20mph signs at the entrance of the village. Residents are parking on pavements.

4. Streets, Squares & Buildings (2.5)

Luncarty - no comments.

Bertha Park - on the whole it is nice, as have pond, landscape, High School, and playpark, but limited outside public space, and only one community space apart from private residences. You can see difference between private and affordable areas, and the lack of signage, can be disorientating. Private factor is also a major issue, and it is difficult to get response, suggestion made for it to be incorporated into PKC greenspace. Need allotments, and fruit trees, greenspaces within the streets, and benches to be placed in nice natural places, not in front of industrial units.

5. Natural Spaces (4.5)

Luncarty - no comments.

Bertha Park - many moved to be close to nature, and walks around loch are good, but limited footpaths/cycle paths and access to nature/open spaces, and more so for less able. Need for allotments, and wild greening are dotted around the area but will be lost with the future new builds filling in gaps.

6. Play & Recreation (1.5)

Luncarty - suggested improvements for park facilities at Langlands and on Scarth Road, including updated equipment and improving offer for older children.

Bertha Park - playpark available near the pond, but nothing for leisure/sport, there is no access to school facilities and perception was that school would be community campus. Concern about future loss of flat green site to development (primary school) which is used for field sports. No clear cycle route either. Compliant facilities at Bertha could be open to community (Culture and Sports engagement 2022).

7. Facilities & Services (3.1)

Luncarty - generally, it is noted access to services is good with primary school, shop, pharmacy, and library van. Lack of a takeaway is noted due to having to travel to Perth at the moment.

Bertha Park - not enough places/spaces, the residents have the following, high school, pharmacy, Nisa (limited selection), takeaway, café, and recycling facilities next to the school, but would like to have a community space beyond the one small community building, and a health centre, restaurant, pub, and wraparound services at the school, and the food growing/allotments which are planned. For other services there is need to travel into Perth but this will be dependent on bus connections.

8. Work & Local Economy (1.5)

Luncarty - no comments.

Bertha Park - not much locally within Bertha Park at moment, but near Inveralmond industrial estate, and also volunteering for litter picking. Difficulty with public transport for accessing opportunities outwith, and childcare services limited which is barrier.

9. Housing & Community (5.9)

Luncarty - no comments.

10. Social Interaction (1.5)

Luncarty - parent and toddler group (Luncarteenies) available to all families with village and local area, and Church Centre run various groups throughout the year.

Bertha Park - crafted by community on street by street basis. No physical space (other than the hub, a commercial space rented by church). Playpark for young people, and various school clubs. Expectation that there will be more space as Bertha Park expands.

11. Identity & Belonging (5.4)

Luncarty - no comments.

Bertha Park - a small cluster around 8 – 10 people turning up for resident meetings. Sense of identity being formed and perception that there is an opportunity to create place, with people making an effort and putting in time. Using social media/email/ leafleting/posters to publicise, and have a walking group, resident Facebook page.

12. Feeling Safe (5.4)

Luncarty - the village is highlighted as being a safe place to bring up children.

Bertha Park - mixed response, most generally feel safe, they have a neighbourhood watch and streets/spaces well overlooked. One comment about anti-social behaviour and seeking improved street lighting. There have been some attempted car theft, and there is a need more community policing.

13. Care & Maintenance (2)

Luncarty - improvements suggested for Luncarty Memorial Hall which is an excellent space but is run down and could do with a makeover.

Bertha Park - issues with factor (poor standards), some individual properties, some common areas, and areas with no clear ownership/awaiting development. There is a need for more bins especially dog bins (playpark particularly).

14. Influence & Sense of Control (2.9)

Luncarty - no comments.

Bertha Park - residents group is effective to a point, optimistic but some frustration at pace of response/feedback from PKC to complains/action required. Also disappointed that Residents group were not informed about road closure etc. Also comment from individual made seeking Springfield to put in promised services, including allotments and paths.