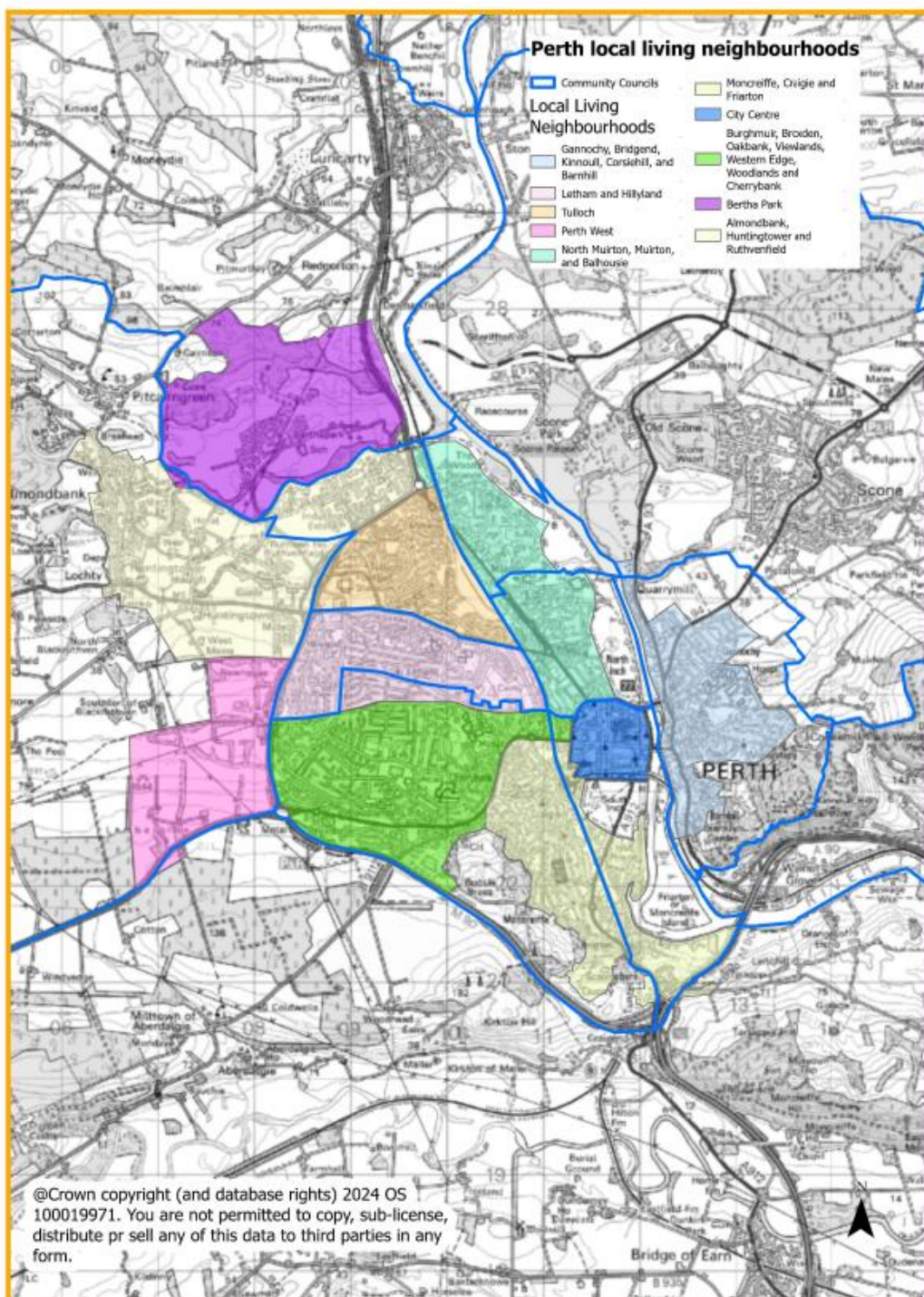


## Community Council: North Muirton

A different approach has been taken for Perth City, as the ward and community council areas do not always reflect the settlement, nor the neighbourhoods within it. Rather than using Community Council areas, because Scottish Government National Planning Framework 4 (NPF4) says LDPs should support local living/20-minute neighbourhoods it was considered that identifying local living areas within Perth city (taking account of Community Council areas where possible) would be a better focus for analysis. North Muirton, Muirton, Balhousie and North Inch was one of the local living areas identified, the map below shows how Perth City was split into local living areas for the BPC analysis.

Map 1: Perth Local living neighbourhoods (also showing community council areas)



## Perth Local Living neighbourhoods:

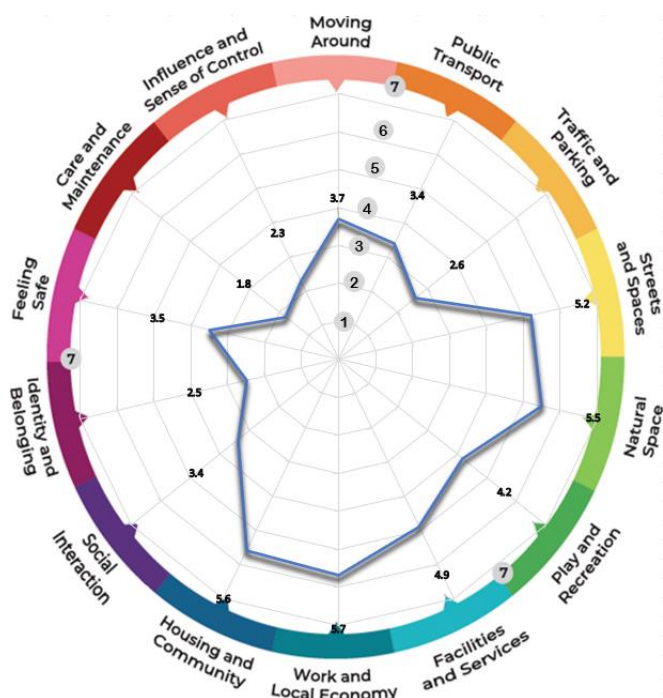
### North Muirton, Muirton, Balhousie and North Inch

This Local Living area covers the North Inch and Muirton Community Council and North Muirton Community Council areas which are both active. The Balhousie neighbourhood is an early suburb of Perth adjacent to the North of the City Centre, and includes the Country House Museum and Tower House, and St Ninian Episcopal Primary School. The Muirton neighbourhood Perth was a later suburb developed for council housing in the 1930's to 1950's. Balhousie shares shopping provision with Muirton with an Asda and a Premier Convenience store central to both communities. Since early 2000's Muirton has been going through a regeneration process. Muirton has North Inch community campus which includes library and community facilities and includes St John's secondary and primary schools, whilst there is also Perth Grammar School. North Muirton is a post war suburb and has its own shopping provision and community hall. This area has good access to greenspace, being bounded to the west by the North Inch, the North Inch golf course and the River Tay, with significant greenspace and pitches also lying between Muirton and North Muirton. Facility wise, it also benefits from the Bells sport centre. This Local Living area shares the new Riverside Primary in North Muirton.

Specifically for this area we held 2 drop ins and a conversation event for Perth North in North Muirton and combined with online surveys we received feedback from at least 52 respondents specifically relating to this local living area. We received feedback from the public at large as well as from the following groups:

- representatives from community council
- business representatives
- minorities
- women issues
- other interest groups
- children and young people
- disabled

Overleaf is the place standard score wheel for North Muirton, Muirton, Balhousie and North Inch. Note that due to the tailored nature of conversations not all participants completed scores, this includes drop in events. Note that place standard scores are out of 7. Seven is where the least improvement is needed, and 1 the most.



Summary of feedback for each topic/question (North Muirton, Muirton, Balhousie and North Inch)

#### Moving Around (3.7)

Welcome lighting in North Inch, and paths here. General issues include camber on pavements and unevenness affects balance, crossing times are considered too short, and difficulties with cycle/pedestrian shared paths. Balhousie Street and Barossa Place are difficult to cross due vehicle volume and speed. Suggestion of more paths. Learning disabled commented on kerb heights being inconsistent and camber drainage being poor (Glasgow have integrated drainage on the same level).

#### Public Transport (3.4)

Lack of direct bus routes /timetables which allow easy onward connection, concerns around Sunday service, and digital real time displays would be good. Stops generally have shelters in North Muirton.

#### Traffic & Parking (2.6)

Need for more 20 mph zones, and speed bumps on Bute Drive. Also, suggestion for zebra crossing outside Grammar school. Considered that vehicle activated sign is not in correct position on Balhousie St, and that a roundabout at junction of Kestrel Way with Balhousie St would reduce accidents. Parking on pavements and at junctions is a concern, and people using Muirton as place to park and walk into city centre is an issue.

#### Streets, Squares & Buildings (5.2)

North Muirton Hall is a great resource, getting well used with plans for more activities, but spaces around could be better utilised for shops/play. More street trees are sought, and allotments, and places for picnic at the park. Some spaces feel unsafe due to lack of lighting.

#### Natural Spaces (5.5)

Generally, quite positive as the North Inch is much appreciated, and paths within it, although there is concern about impact of golf course (fertilizers etc) on nature, and a bridge to Scone, and more trees within it, would improve access to nature. Flower beds outside Coop are no longer nice and natural, due to lack of volunteers and awareness.

#### Play & Recreation (4.2)

Again, North Inch is appreciated, as is Bells sport centre, the play park next to community centre, and North Muirton Hall having just recently reopened is a great resource, but is currently underused. Need for more things for older children (such as skate or bike park), and in a different space from younger kids, and more sensory play opportunities. New school including sports pitch welcomed. Suggestions of outdoor gym at North Inch and other features such as nature treasure hunts, and more trees and picnic areas to be more creative/interesting. Suggest PKC build more facilities on North Inch, 4G Pitch lighting (Culture and Sports engagement 2022).

#### Facilities & Services (4.9)

North Muirton Hall having just recently reopened is a great resource but is currently underused. North Inch Community campus also appreciated for evening classes and library but would like better use of it as a community centre. A restaurant/café/pub would be good as not many indoor spaces locally for socialising. Need to travel to city centre for shops as limited locally, also a food growing area is sought.

### Work & Local Economy (5.7)

Appreciate having lots of employment nearby and Perth college.

### Housing & Community (5.5)

Considered that there is a good range of housing, although there are maintenance problems with private rentals, and there are affordability issues. Also in North Muirton front gardens are owned but not maintained by Council which is an issue. Like 1940's houses in Muirton as they are not overlooked, but comment that asbestos needs replaced from roofs in Muirton.

### Social Interaction (3.4)

Not great, there is a need for more indoor sheltered spaces locally for socialising, Riverside church café is good but limited hours of opening, and there is Balhousie café, but limited offering. Need to make better use of North Inch community campus, Riverside school, and North Muirton community hall.

### Identity & Belonging (2.5)

Not great, there used to be more community spirit, there are pockets of community. Not a lot of the community gets involved with North Muirton Community Council and it can be difficult to engage people.

### Feeling Safe (3.5)

Lighting is an issue in North Muirton, at school/shops, and along riverside path in North Inch, whilst alleyways not overlooked or well lit. New lighting is too dim, although told it may be possible to turn it up. There is problem with drug use, and anti-social behaviours around co-op. Need more police/community warden presence.

### Care & Maintenance (1.8)

One of the two lowest scoring questions, some surface maintenance issues, and grass overgrown paths, whilst play equipment (climbing) by community centre is broken/missing, benches need painting, and some buildings need better maintenance. Also, there is a sewage problem on the North Inch around the children's playground near Bells. Suggestion that they could do with local place for recycling/landfill. Littering from school pupils is an issue, whilst it is considered that fly tipping should be removed by PKC even if land is not owned by PKC.

### Influence & Sense of Control (2.3)

The other lowest scoring questions, quite a lot of concern, as some PKC communication is poor. There is a need for opportunities for community councils in Perth to work together. Some disconnection evident between community council and residents too, and concern about limited evidence-based use of resources.