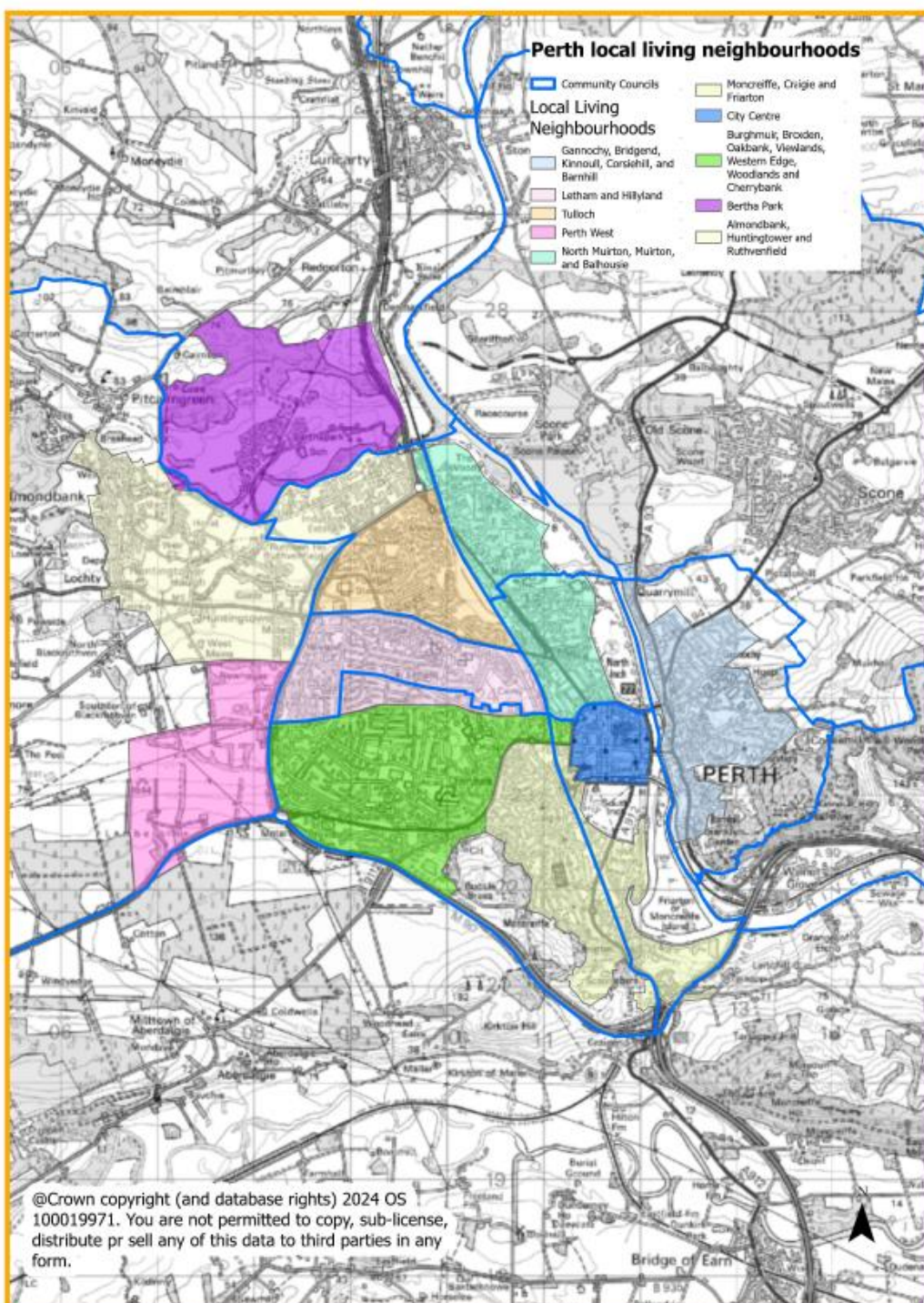


## Community Council: Perth Central

A different approach has been taken for Perth City, as the ward and community council areas do not always reflect the settlement, nor the neighbourhoods within it. Rather than using Community Council areas, because Scottish Government National Planning Framework 4 (NPF4) says LDPs should support local living/20-minute neighbourhoods it was considered that identifying local living areas within Perth city (taking account of Community Council areas where possible) would be a better focus for analysis. Perth City Centre was one of the local living areas identified, the map below shows how Perth City was split into local living areas for the BPC analysis. Also partially within this community council area is the Moncrieffe, Craige and Friarton local living area.

Map 1: Perth Local living neighbourhoods (also showing community council areas)



# Perth Local Living neighbourhoods:

## Perth City Centre

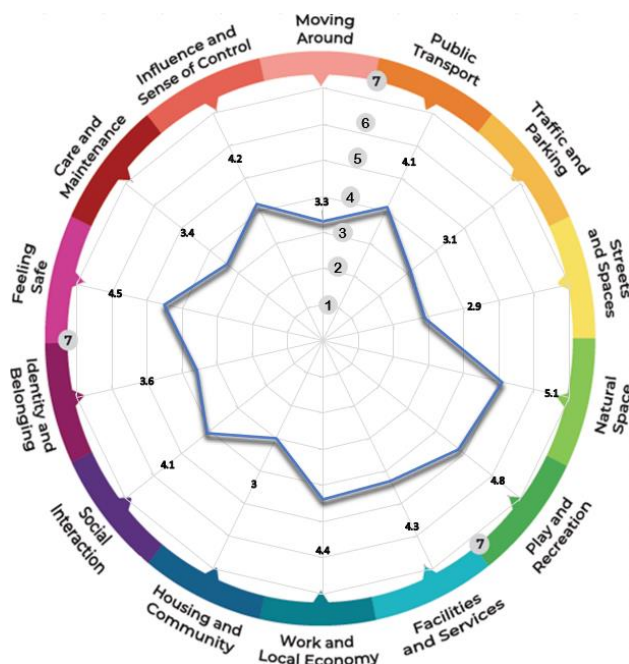
### Place standard wheel of scores for Perth City Centre

It lies within the Central Community Council area which is not active. It has a high amenity setting on the eastern bank of the Tay, adjacent to the large North Inch and the South Inch parks. The City Centre is compact, with a strong grid pattern, of walkable size, circled by the inner city ring road. It does not have a primary school within it, but it otherwise has a very good range of services and facilities. The City Centre has a key role, for all of Perth and Kinross, being the major administrative, commercial and cultural centre of the region. It has St Johns indoor shopping centre, but it is a centre that benefits from significant on street shopping/service/leisure provision, including significant independent presence. The City Hall recently benefited from a redevelopment project and the new Perth Museum opened in March 2024. Key leisure provision on Glasgow Road is technically just outwith the centre, as is the train station which lies west of the inner ring road (Leonards Street).

Specifically for this area we held 2 drop ins and a conversation event for Central Perth. In total we received feedback from atleast 111 respondents specific to this local living area, from the following groups, and 22 of those provided scoring

- elderly
- disabled
- business representatives
- LGBTQI+
- minorities
- women issues
- children and young people

Below is the place standard score wheel for Perth City Centre. Note that due to the tailored nature of conversations not all participants completed scores, this includes drop in events. Note that place standard scores are out of 7. Seven is where the least improvement is needed, and 1 the most.



## Summary of feedback for each topic/question (Perth City Centre)

### Moving Around (3.3)

Cycle infrastructure is poor, unsafe, patchy and confusing, comments seek segregated infrastructure. Good accessibility walking around city centre, lanes and vennels but not many benches for resting. Need to prioritise pedestrians and cyclists over cars, whilst bikes and scooters using pavements is an issue. Lack of kerb on Mill St an issue, lack of dropped kerbs on Tay St and on both sides of a road, and sloped/uneven pavements, and steps and drainage channels elsewhere are an issue for accessibility.

### Public Transport (4.1)

Mixed response some considering it well served with the Mill St hub considered to be good, others point to issues with cancellations and connections between train and bus services. Improvements to train station and an integrated hub are sought as well as more real time travel info and a more affordable service. Bus arm rests are the same colour as the seat, make it hard for visually impaired.

### Traffic & Parking (3.1)

Mixed views provided on whether the parking in city centre is sufficient, and many seek more free/affordable parking. Issues mentioned include traffic speed, and dangerous corner between bus station and railway station. Pollution/congestion issues in city centre, also mentioned, particularly Atholl Steet. Cars parked on pavements make it hard for visually impaired.

### Streets, Squares & Buildings (2.9)

Mixed views on success of St Pauls, whilst waterfront, murals and art, and the lighting of key buildings, are positives. Many mentioned the need for improvement to condition/maintenance of buildings, vennels and streets, and some suggest more attractions, better green spaces/trees, and the reuse of existing buildings is needed. Antisocial behaviour, out of town retail, maintenance of trees and planting areas, and difficulty getting from train and bus stations to city centre are issues mentioned.

### Natural Spaces (5.1)

Considered that City centre could do better, with planting, trees, seating and greenspaces. PKC could do better with tree management at Moncrieffe island, and there is concern about invasive species.

### Play & Recreation (4.8)

Good spaces at the Inches, and good facilities including swimming pool, ice rink and foot golf. Cultural highlights include art gallery, museum, cinema, theatre. Better provision for older kids sought and greater range of activities sought such as disc golf, pitch and put, bowling alley, pump tracks, outdoor gym, pedalos, outdoor Ping pong tables. Better maintenance of pond at South Inch also sought.

### Facilities & Services (4.3)

Concern about impact of empty shops, limited range of stores, out of centre retail, and limited leisure and opportunities/attractions for visitors. However good range of facilities, shops and amenities are mentioned by some. Difficulties accessing NHS dental and doctors' services (although there are some facilities in accessible locations) and the location of NHS Community Care and Treatment at Beechgrove, which should be within the city centre draw comment.

#### Work & Local Economy (4.4)

Mixed comments but some express concern about the range of jobs and volunteer opportunities, the support for small businesses, and the seek lower rent/rates for shops. Ideas are put forward for empty Debenhams, such as co-working, or bringing the college into the centre with exhibition space.

#### Housing & Community (3)

Issues with suitability for elderly and disabled due to lack of lifts in flats, and although varying standards, the maintenance/energy performance and running costs are a significant concern. Need to better use vacant properties and enforce building maintenance, whilst affordability needs addressed. Use of 'language line' by PKC housing to communicate with tenants from other countries is good but need for more events to bring people together.

#### Social Interaction (4.1)

Good range of bars/cafes and music scene is appreciated. However, there is concern about overall attractiveness of the city centre, and suggestion it could benefit from more central space for farmers market (possibly in front of concert hall), a city centre square, more community spaces, meeting/pocket park spaces that you would want to linger in, semi covered spaces with art. Importance of free spaces and spaces without alcohol is key.

#### Identity & Belonging (3.6)

Concern that identity has reduced over time, and nothing has come into replace it, again vacancies/maintenance issues, particularly big ones such as Debenhams are significant detractors. Events are good, but more are sought, with better spread throughout city centre, and community led events. Importance of free spaces comes up again, as does efforts to attract visitors and support art and nature.

#### Feeling Safe (4.5)

Range of views on safety but significant concerns particularly at night and in some hot spot areas (Mill St, Inches, South St, lanes and vennels), with anti-social behaviour and criminal incidents an issue. Suggestions for more police/warden presence and better lighting/more CCTV.

#### Care & Maintenance (3.4)

Many mentioned the need for improvement to condition/maintenance of buildings, vennels and streets, and the reuse of existing buildings, and better green spaces/trees. Alongside building maintenance, littering, vandalism, sewage on street, and graffiti are key concerns.

#### Influence & Sense of Control (4.2)

Some positive experiences, particularly around the opportunities, but there is some feeling that although it is relatively easy to have your say, it is much more difficult to be listened to. Suggestions include that a user group would be useful way to engage, and that there should be more feedback and use of social media.

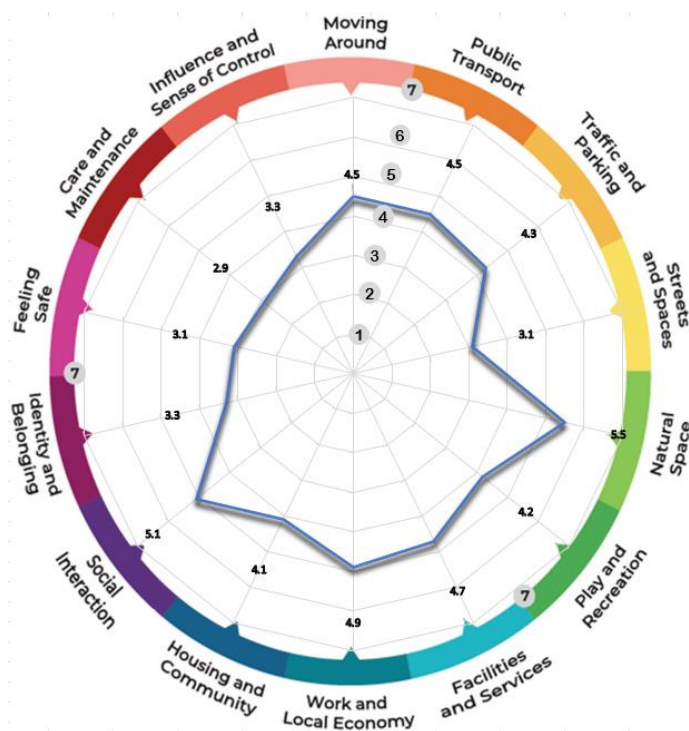
## Moncreiffe, Craigie, and Friarton

This local living area lies partially within the Perth Central and Perth South community council areas neither of which are currently active. It lies to the immediate south and east of the City Centre, and the South Inch park. It includes the Moncreiffe, Craigie and Friarton neighbourhoods within it, and three primaries Craigie, Inch View and Moncreiffe. It has a close relationship with the city centre. It also enjoys greenspaces to the south of the Craigie golf course, at Buckie Braes and St Magdalenes Hill, and the Craigie burn runs through it west to east. This area includes significant commercial and industrial areas and the harbour lies within it, and is run commercially at the moment, however the Council decided in February 2023 to close Perth Harbour, and Transport Scotland is assessing a Revision Order for Scottish Ministers' consideration.

Specifically for this area held 2 drops in events and a conversation event for Perth south. We received feedback from 36 respondents specific to this local living area. We received feedback from the public at large as well as from the following groups:

- children and young people
- elderly
- women issues
- other interest groups

Below is the place standard score wheel for Moncreiffe, Craigie, and Friarton



Summary of feedback for each topic/question (Moncreiffe, Craigie, and Friarton)

Moving Around (4.5)

Most routes are good for walking, but routes into centre when flood gate closes are long. Recreational routes are good. Streets are too busy and narrow and cycling is difficult and dangerous due to lack of segregation. Not enough seating, pavements should be wider and

would benefit from bike rental scheme. New development needs good pedestrian connections. Pavement parking an issue on Edinburgh Road.

#### Public Transport (4.5)

Generally ok, but reduced services in evenings, and no Sunday service, and some issues with reliability. Seeks connection to train station from Glover Street. Not shelters at all stops, and they need live timetables. Lack of direct route to Broxden, and lack of integration are issues.

#### Traffic & Parking (4.3)

Speeding traffic and off ride motorbikes are an issue, whole of Craigie should be 20 mph. Queen st is dangerous for cyclists and pedestrians and should be made one way. Edinburgh road is unsafe for crossing. Concerns about HGV traffic, and placement of sign should go before Evelyn Terrace so they can go down this road instead. Pavement parking is an issue, as is parking related to the schools. More parking controls and enforcement is needed.

#### Streets, Squares & Buildings (3.1)

Seek a square with benches. Maintenance of parks an issue. South Perth Greenspace Group (SPG) taking responsibility for site at Quarry Road (used to be garages), not presently useable but will increase biodiversity and community value. Buildings mostly in good repair, although concern about tenements at Craigie Cross. Old advertising hoarding on the railway bridge detracts from amenity.

Glad that lighting in South Inch park will be upgraded. Tunnels at South Inch underutilised, current lighting needs improved. Tunnels main route during daylight but avoided during evening. Anti-social behaviour hotspot.

Seeks better flood defence, sewers and drainage and maintenance of existing measures (such as trash screen at Queens Avenue culvert) and to restrict new development due to flood risk and impact on Craigie, Buckie and Scouring burns.

#### Natural Spaces (5.5)

Good access to woodland walks, Craigie, St Magdalene's and Moncrieffe hills, the South Inch and the river. Bucky braes underutilised but part of its charm. Paths on St Magdalene should be better maintained.

Good quantity of greenspaces and although grassy areas don't provide much benefits, there is lots of good activity, local community garden, and orchard 800 project, tree planting, and ongoing initiatives by SPG group. South Inch rewilding needs to be well managed, and there needs to be better coordination between PKC and greenspace groups as there are examples of digging up of previously planted areas.

Some concern about potential future development of Craigie Hill Golf Course, and flood risk, with suggestion it could become community woodland if not viable.

#### Play & Recreation (4.2)

Appreciate nearby existing leisure pool and Dewar facilities, and Glenearn Community campus. However, the local parks are an issue maintenance wise, sewage traps overflow at Darnhall play park making it unusable, and there is antisocial behaviour at Glenearn Road park, whilst small park in Friarton has poor facilities. The tunnels to South Inch are safety concern during night, but also daytime. An enclosed MUGA pitch on Raeburn park would vastly improve the sports facilities available to Craigie primary school children.

There is a need for community hubs/spaces for teenagers, and groups/activities and signposting tool to find out about groups and activities.

#### Facilities & Services (4.7)

Generally positive about local services, and access to city centre facilities, but a local hub would be beneficial/or seek to retain use of church halls for community groups/activities. Seek reuse of site 53 Jeanfield road, former builders yard, perhaps for farm project, and vacant site at Riggs Road for community gardens, and if not demand then residential.

#### Work & Local Economy (4.9)

Opportunities due to business park on Glenearn road, but limited retail and hospitality jobs, and volunteering opportunities are more limited. Lack of childcare opportunities can be prohibitive for those seeking employment. Need for more shops/enterprise not just residential, some vacancy opportunities at Craigie cross, and a community hub would create some opportunities.

#### Housing & Community (4.1)

Not a great mix of type and ownership types, affordability is an issue, and issue with short term holiday lets, and limited rental properties. Energy efficiency of the stock is also an issue. Housing on Glengarry Road needs refurbishment and need for better opportunities to swap with others. Also with flood risk issues, there is desire for less impermeable surface in new developments.

#### Social Interaction (5.1)

SPG looking to address issue of social isolation in area, due to covid, people especially elderly are still shielding. Whilst there are spaces (pub, community centre, community campus, and café), activities are limited. Informal spaces/sheltered outdoor spaces are important and unfortunately seating along Edinburgh Road was removed due to anti-social behaviour.

#### Identity & Belonging (3.3)

Mixed response, some good strong feeling of identify and community but others don't feel it. Considered that more could be done to celebrate heritage and historic community assets, mill and brewery, outdoor seating is needed, and neighbourhood watch scheme and community clubs/groups should be encouraged.

#### Feeling Safe (3.1)

Need more community wardens/ visible policing to address anti-social behaviour at South Inch tunnels. Need for more CCTV and reestablish neighbourhood watch to address robberies in area. Need better flood protection and measures. Flooding issue at lower end of Cavendish Avenue/Gray Street, due to drainage issue at Pickletullum, issues with undersized culverts, and concern about the design and maintenance of SUDs schemes as part of developments.

#### Care & Maintenance (2.9)

Community centre is being addressed, and good response from PKC to address flooding events, but times could be improved, and flooding mechanism at Darnhall roundabout should be automatic, whilst the flap valve for Craigie burn took 6 months to replace. Flood events cause repair and maintenance issues. Triangle at Glenearn road with paving and flowers has not been maintained, and foliage from private properties affects pavements. South inch rewilding creating weeds and untidy grass, and sometimes wrong places are being chosen (Queens court). Iron railings need replaced.

### Influence & Sense of Control (3.3)

Partnership brought key stakeholders and community members together. Foundations are there from previous partnership work. SPG help with this process, involved in the joint meetings with councillors, schools, churches, community wardens. SPG developing tool for newsletter ideally online but paper copies still available.

Like to receive PKC email news and appreciate local Members. Some feel there is a disconnect though between listening and action, and some do not feel listened to about new development and flood risk. Suggestions include more referendums/direct democracy, and better access to staff at Council offices.