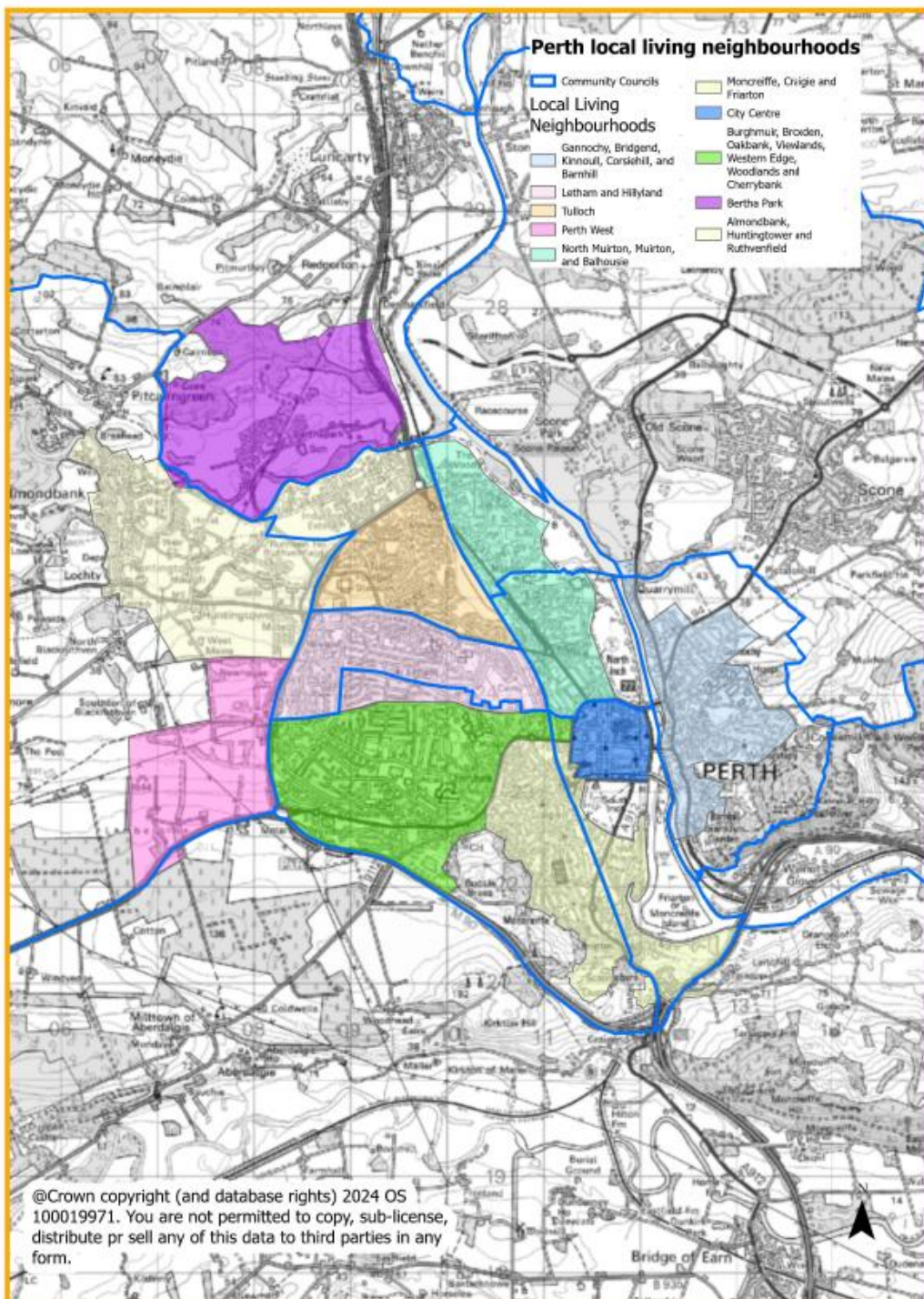


Community Council: Perth South

A different approach has been taken for Perth City, as the ward and community council areas do not always reflect the settlement, nor the neighbourhoods within it. Rather than using Community Council areas, because Scottish Government National Planning Framework 4 (NPF4) says LDPs should support local living/20-minute neighbourhoods it was considered that identifying local living areas within Perth city (taking account of Community Council areas where possible) would be a better focus for analysis. Burghmuir, Broxden, Oakbank, Viewlands, Western Edge, Woodlands and Cherrybank was one of the local living areas identified, the map below shows how Perth City was split into local living areas for the BPC analysis. Another local living area Moncreiffe, Craige, and Friarton also lies within Perth South community council area.

Map 1: Perth Local living neighbourhoods (also showing community council areas)



Perth Local Living neighbourhoods:

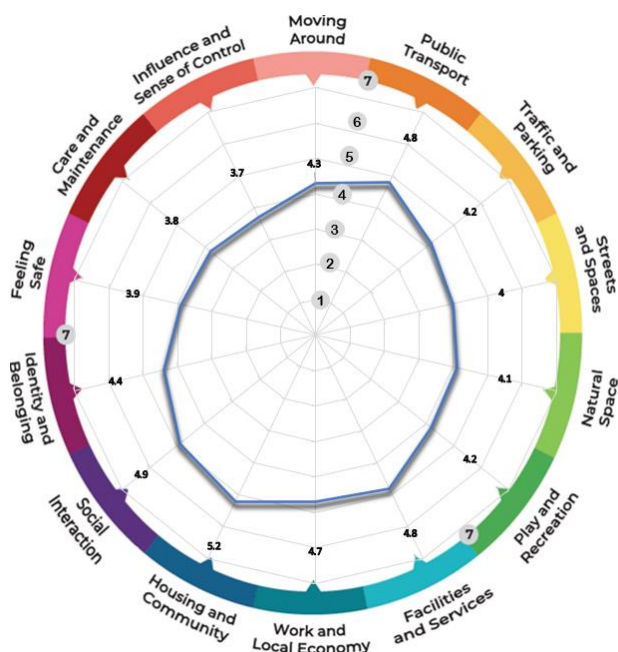
Burghmuir, Broxden, Oakbank, Viewlands, Western Edge, Woodlands and Cherrybank

This Local Living area covers a large part of the Perth South Community Council area which is not currently active, whilst the community council area was too large to define as one Local Living area. This Local Living area still has many smaller neighbourhoods within it. Although largely suburban it also includes institutions some of which serve the wider area, including the Perth Royal Infirmary which lies south of Jeanfield Road to the northeast of this area, and 2 secondary schools, Perth Academy and Perth High School. It also has 3 primaries Fairfield, Viewlands and Oakbank which all lie centrally. It also includes the Aviva headquarters, and the Broxden services and park and ride. The Souring burn runs through it east to west, providing biodiversity and active travel opportunities, whilst outwith the area Buckie Braes and the South Inch to the south do likewise, and there are a couple of larger parks to the north at Viewlands road west and at the Viewlands reservoir. It has neighbourhood shopping provision at Broxden services (Londis), and at Oakbank road/Alder drive (McColls), and nearby at West Mains Avenue (Coop).

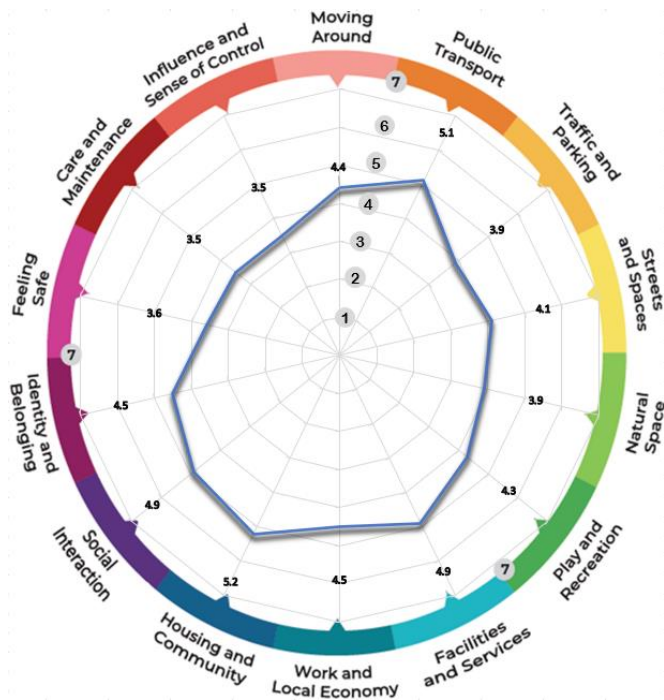
Specifically for this area held 2 drops in events and a conversation event for Perth south. We also engaged with 2 primary schools (Oakbank and Viewlands). We received feedback from 53 respondents specific to this local living area. We received feedback from the public at large as well as from the following groups:

- children and young people
- elderly
- minorities
- women issues
- other interest groups

Below is the place standard score wheel for Burghmuir, Broxden, Oakbank, Viewlands, Western Edge, Woodlands and Cherrybank. Note that due to the tailored nature of conversations not all participants completed scores, this includes drop in events. Note that place standard scores are out of 7. Seven is where the least improvement is needed, and 1 the most.



Below is the place standard score wheel for the children and young people (33 respondents) from engaging with 2 primary schools (Oakbank and Viewlands) which is broadly similar but public transport scores more highly likely due to free bus travel for young people, and again children and young people feel less safe, and score their natural space slightly lower.



Summary of feedback for each topic/question (Burghmuir, Broxden, Oakbank, Viewlands, Western Edge, Woodlands and Cherrybank)

Moving Around (4.3)

Need for segregated/safer cycle routes (and have been accidents), but walkable distance to local facilities. Safety/lighting and maintenance/vegetation issues for paths away from roads, and some roads too steep and issue with cars parking at corners/junctions. Lack of cycling parking facilities at parks/shops. Speeding cars around Viewlands primary is an issue. Still waiting for adoption at Charlotte gate, and no snow ploughs visit, and pavements in poor condition. Dropped kerb at start of burn path off Lamberkine Drive could be wider for cyclists. Children and young people particularly concerned about parking, and difficulties crossing roads.

Public Transport (4.8)

Provided on Glasgow Road but need for real time info at more bus stops, shelter at bus stops, better maintenance of shelters, a stop on Holly Terrace, and direct routes to popular places outwith the City centre. Suggestion that 14A be extended to Ruthvenfield. Mixed views on quality, but some consider the bus services not regular/reliable/affordable enough and the Sunday service insufficient. Children and young people enjoy free bus services and independence it provides.

Traffic & Parking (4.2)

Traffic is an issue particularly on Glasgow Road, and at roundabout near McColls. At peak times the roundabout to the park and ride is blocked. Sometimes the traffic lights are not working, and cars go through red lights causing accidents. There is need for more traffic calming and more crossing points. Some roads are too tight for parking and too many cars are onstreet (Lamberkine Drive is an example), and there is an issue with parking on pavements. Parking at Cherrybank is an issue due to businesses and visitors. There is a need for communal parking areas, double yellow lines at junctions and corners, and concern about capacity of Broxden park and ride. Exclusion zone for school is not being enforced.

Streets, Squares & Buildings (4)

Similar houses, but some stand out, no squares, cycle and pedestrian paths too indirect, and congestion is an issue. Greening of streets would improve environment and assist with climate change. There are crime/drug issues at Fechny Park. Viewlands road west park could be better maintained, and parks could have more planting. Suggestions for Aldi permission to be reviewed due to impact on noise, trees, and traffic, more greenspaces needed to deal with flooding, and for derelict land at Riggs Road to be redeveloped for community gardens/allotments or affordable housing. Sound barriers/trees along A9 are also sought. Children and young people suggest buildings/streets can be too similar and suggest more variety and colours on buildings would be attractive.

Natural Spaces (4.1)

Some areas have good biodiversity and habitat, and birdwatching opportunities, Buckie Braes is good, Craigie Hill is close, and path from Cherrybank to Broxden provides good access, but not enough natural spaces, and seek more trees and woodland, and the route to Bridge of Earn needs improved. Important to protect greenbelt and greenspaces and concern about development at Broxden, and west of Perth, as it provides good access to countryside.

Play & Recreation (4.2)

Have good range of formal and informal open spaces including play parks, pitches, golf course, and allotments, and facilities including coffee shop and restaurant. However, reservoir and park at rear of PRI could have better provision, and Viewlands Road West park needs better equipment. Parks could have more things for older children, and adult outdoor gym. Children and young people also suggest more/closer parks. More flat areas for ball sports are sought (should remove no ball games on grassy areas), and provide indoor/all-weather facilities, and would like closer skating, tennis, and horse riding opportunities. Need more low-cost activities.

Facilities & Services (4.8)

Community centre and scout hall is good, but mixed views on the sufficiency of local shops and clubs/activities/library provision and need to use car/bus to access some services. Difficulty in getting appointments for doctors and dentists also mentioned, and building quality of High School is a concern (currently replacement being built). Children and young people particularly seek more range of leisure activities including go karting, arcades, softplay etc.

Work & Local Economy (4.7)

Some good opportunities, and some people homework, but not ideal range of options.

Housing & Community (5.2)

Good mix of homes available, but more sheltered, and affordable housing and more mix of sizes, better energy efficiency and more originality is needed. Sometimes no affordable is provided within new development and would like provision of community orchard within new development. Good community spirit, and interactions, but when social housing is not maintained there is anti-social behaviour which affects wider community. Some concerns about new development, and would like focus on brownfield sites, and flood protection.

Social Interaction (4.9)

Good spaces/opportunities from informal to formal including community centre, parks, cafes but some go to city centre for more opportunities and seek more natural areas. Difficult to know what activities are available and need more community events. Need benches/picnic areas within parks.

Identity & Belonging (4.4)

Welcoming and attractive community, and neighbours look after one another, but could be more community events.

Feeling Safe (3.9)

Mixed response, as mostly considered reasonable during day, but evening concerns and there have been house break ins and anti-social behaviour issues. Suggest more/better policing. Paths are not well lit, need more lights, and lamp posts not working. Monitoring/enforcement of planning conditions on recent housing developments would reduce flood and amenity risk. Also seek improved road safety near Broxden, and on Low Road.

Care & Maintenance (3.8)

Litter issues particularly in relation to schools. More signs and dog poo bins sought. Issues with maintenance of greenspace at Persimmon Development. Park, and generally vegetation maintenance is an issue, and pot holes remain for long time before being fixed. School's need repairs and maintenance, and vacant and derelict land needs to be brought back to use.

Influence & Sense of Control (3.7)

Difficult for children and young people and need more ways to publicise and engage and there should be more use of social media. Some like the online survey. Some mention good assistance from local Members, whilst it is also mentioned that there is not much evidence of feedback being acted upon (swimming pool). People generally find it difficult to get feedback/action.

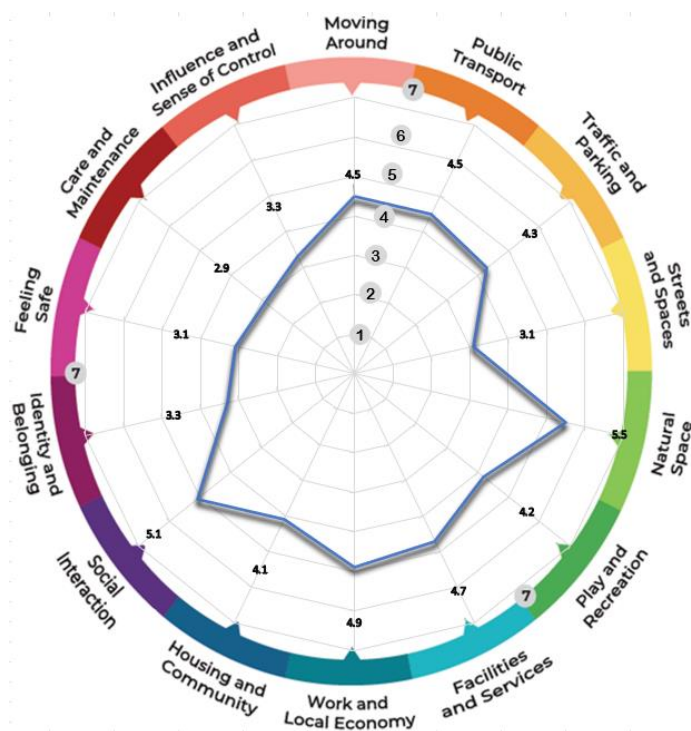
Moncreiffe, Craigie, and Friarton

This local living area lies partially within the Perth Central and Perth South community council areas neither of which are currently active. It lies to the immediate south and east of the City Centre, and the South Inch park. It includes the Moncrieffe, Craigie and Friarton neighbourhoods within it, and three primaries Craigie, Inch View and Moncrieffe. It has a close relationship with the city centre. It also enjoys greenspaces to the south of the Craigie golf course, at Buckie Braes and St Magdalenes Hill, and the Craigie burn runs through it west to east. This area includes significant commercial and industrial areas and the harbour lies within it, and is run commercially at the moment, however the Council decided in February 2023 to close Perth Harbour, and Transport Scotland is assessing a Revision Order for Scottish Ministers' consideration.

Specifically for this area held 2 drops in events and a conversation event for Perth south. We received feedback from 36 respondents specific to this local living area. We received feedback from the public at large as well as from the following groups:

- children and young people
- elderly
- women issues
- other interest groups

Below is the place standard score wheel for Moncreiffe, Craigie, and Friarton. Note that due to the tailored nature of conversations not all participants completed scores, this includes drop in events. Note that place standard scores are out of 7. Seven is where the least improvement is needed, and 1 the most.



Summary of feedback for each topic/question (Moncreiffe, Craigie, and Friarton)

Moving Around (4.5)

Most routes are good for walking, but routes into centre when flood gate closes are long. Recreational routes are good. Streets are too busy and narrow and cycling is difficult and dangerous due to lack of segregation. Not enough seating, pavements should be wider and would benefit from bike rental scheme. New development needs good pedestrian connections. Pavement parking an issue on Edinburgh Road.

Public Transport (4.5)

Generally ok, but reduced services in evenings, and no Sunday service, and some issues with reliability. Seeks connection to train station from Glover Street. Not shelters at all stops, and they need live timetables. Lack of direct route to Broxden, and lack of integration are issues.

Traffic & Parking (4.3)

Speeding traffic and off ride motorbikes are an issue, whole of Craigie should be 20 mph. Queen st is dangerous for cyclists and pedestrians and should be made one way. Edinburgh road is unsafe for crossing. Concerns about HGV traffic, and placement of sign should go before Evelyn Terrace so they can go down this road instead. Pavement parking is an issue, as is parking related to the schools. More parking controls and enforcement is needed.

Streets, Squares & Buildings (3.1)

Seek a square with benches. Maintenance of parks an issue. South Perth Greenspace Group (SPG) taking responsibility for site at Quarry Road (used to be garages), not presently useable but will increase biodiversity and community value. Buildings mostly in good repair, although concern about tenements at Craigie Cross. Old advertising hoarding on the railway bridge detracts from amenity.

Glad that lighting in South Inch park will be upgraded. Tunnels at South Inch underutilised, current lighting needs improved. Tunnels main route during daylight but avoided during evening. Anti-social behaviour hotspot.

Seeks better flood defence, sewers and drainage and maintenance of existing measures (such as trash screen at Queens Avenue culvert) and to restrict new development due to flood risk and impact on Craigie, Buckie and Scouring burns.

Natural Spaces (5.5)

Good access to woodland walks, Craigie, St Magdalene's and Moncrieffe hills, the South Inch and the river. Bucky braes underutilised but part of its charm. Paths on St Magdalene should be better maintained.

Good quantity of greenspaces and although grassy areas don't provide much benefits, there is lots of good activity, local community garden, and orchard 800 project, tree planting, and ongoing initiatives by SPG group. South Inch rewilding needs to be well managed, and there needs to be better coordination between PKC and greenspace groups as there are examples of digging up of previously planted areas.

Some concern about potential future development of Craigie Hill Golf Course, and flood risk, with suggestion it could become community woodland if not viable.

Play & Recreation (4.2)

Appreciate nearby existing leisure pool and Dewar facilities, and Glenearn Community campus. However, the local parks are an issue maintenance wise, sewage traps overflow at Darnhall play park making it unusable, and there is antisocial behaviour at Glenearn Road park, whilst small park in Friarton has poor facilities. The tunnels to South Inch are safety concern during night, but also daytime. An enclosed MUGA pitch on Raeburn park would vastly improve the sports facilities available to Craigie primary school children.

There is a need for community hubs/spaces for teenagers, and groups/activities and signposting tool to find out about groups and activities.

Facilities & Services (4.7)

Generally positive about local services, and access to city centre facilities, but a local hub would be beneficial/or seek to retain use of church halls for community groups/activities. Seek

reuse of site 53 Jeanfield road, former builders yard, perhaps for farm project, and vacant site at Riggs Road for community gardens, and if not demand then residential.

Work & Local Economy (4.9)

Opportunities due to business park on Glenearn road, but limited retail and hospitality jobs, and volunteering opportunities are more limited. Lack of childcare opportunities can be prohibitive for those seeking employment. Need for more shops/enterprise not just residential, some vacancy opportunities at Craigie cross, and a community hub would create some opportunities.

Housing & Community (4.1)

Not a great mix of type and ownership types, affordability is an issue, and issue with short term holiday lets, and limited rental properties. Energy efficiency of the stock is also an issue. Housing on Glengarry Road needs refurbishment and need for better opportunities to swap with others. Also with flood risk issues, there is desire for less impermeable surface in new developments.

Social Interaction (5.1)

SPG looking to address issue of social isolation in area, due to covid, people especially elderly are still shielding. Whilst there are spaces (pub, community centre, community campus, and café), activities are limited. Informal spaces/sheltered outdoor spaces are important and unfortunately seating along Edinburgh Road was removed due to anti-social behaviour.

Identity & Belonging (3.3)

Mixed response, some good strong feeling of identify and community but others don't feel it. Considered that more could be done to celebrate heritage and historic community assets, mill and brewery, outdoor seating is needed, and neighbourhood watch scheme and community clubs/groups should be encouraged.

Feeling Safe (3.1)

Need more community wardens/ visible policing to address anti-social behaviour at South Inch tunnels. Need for more CCTV and reestablish neighbourhood watch to address robberies in area. Need better flood protection and measures. Flooding issue at lower end of Cavendish Avenue/Gray Street, due to drainage issue at Pickletullum, issues with undersized culverts, and concern about the design and maintenance of SUDs schemes as part of developments.

Care & Maintenance (2.9)

Community centre is being addressed, and good response from PKC to address flooding events, but times could be improved, and flooding mechanism at Darnhall roundabout should be automatic, whilst the flap valve for Craigie burn took 6 months to replace. Flood events cause repair and maintenance issues. Triangle at Glenearn road with paving and flowers has not been maintained, and foliage from private properties affects pavements. South inch rewilding creating weeds and untidy grass, and sometimes wrong places are being chosen (Queens court). Iron railings need replaced.

Influence & Sense of Control (3.3)

Partnership brought key stakeholders and community members together. Foundations are there from previous partnership work. SPG help with this process, involved in the joint meetings with councillors, schools, churches, community wardens. SPG developing tool for newsletter ideally online but paper copies still available.

Like to receive PKC email news and appreciate local Members. Some feel there is a disconnect though between listening and action, and some do not feel listened to about new development and flood risk. Suggestions include more referendums/direct democracy, and better access to staff at Council offices.