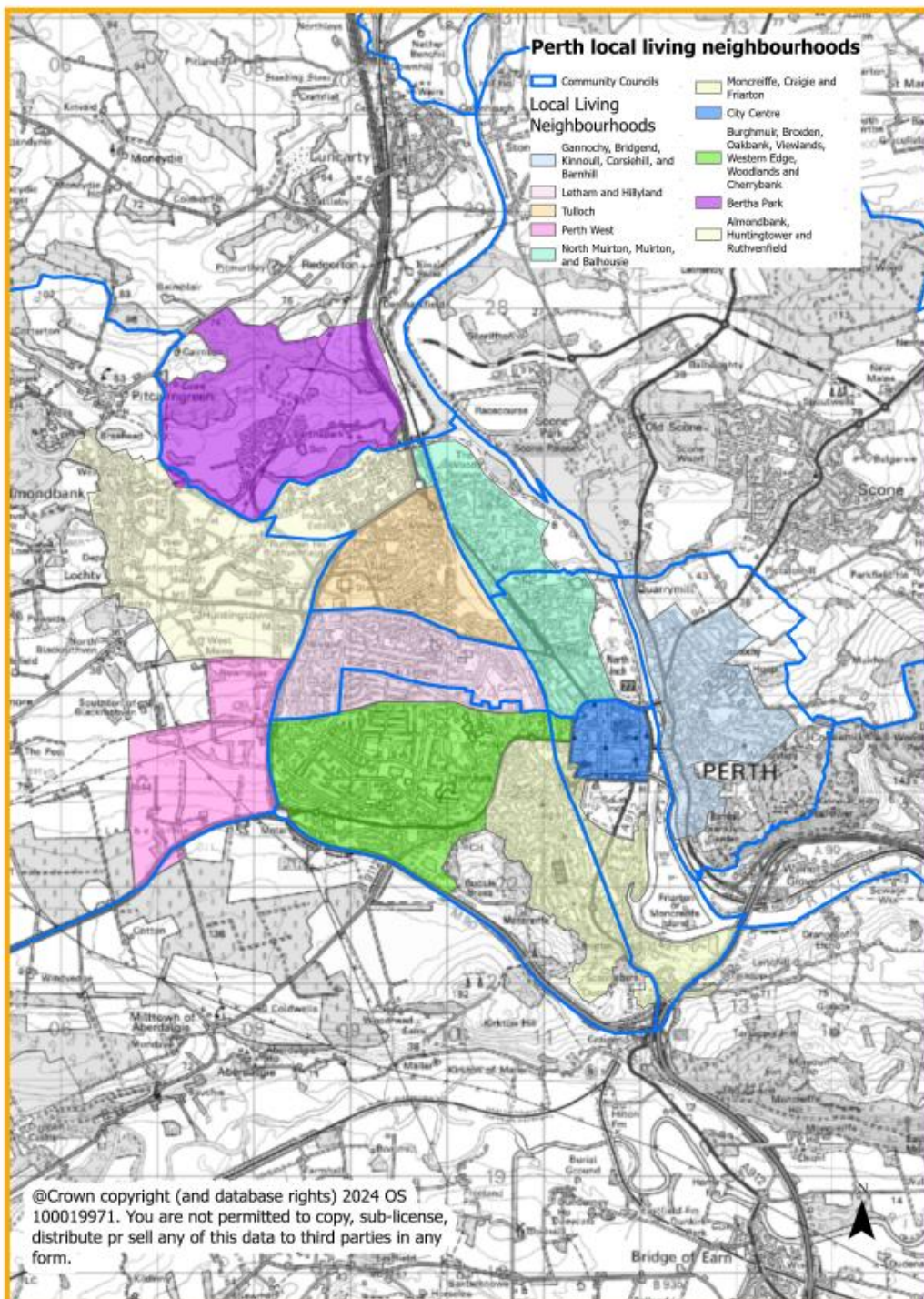


## Community Council: Tulloch

A different approach has been taken for Perth City, as the ward and community council areas do not always reflect the settlement, nor the neighbourhoods within it. Rather than using Community Council areas, because Scottish Government National Planning Framework 4 (NPF4) says LDPs should support local living/20-minute neighbourhoods it was considered that identifying local living areas within Perth city (taking account of Community Council areas where possible) would be a better focus for analysis. Tulloch was one of the local living areas identified, the map below shows how Perth City was split into local living areas for the BPC analysis. Another local living area Almondbank Huntingtower and Ruthvenfield also lies partially within Tulloch community council area.

Map 1: Perth Local living neighbourhoods (also showing community council areas)



## Perth Local Living neighbourhood:

### Tulloch

This Local Living area covers the Tulloch Community Council areas which is not currently active. The Tulloch area lies to the Northwest of the City Centre and borders Hillyland and Letham to the south, and the A9 and Inveralmond to the north. It has its own central neighbourhood shop/facilities at Tulloch square, as well as the Tesco on Crieff Road, and the Lade runs through it east to west, providing biodiversity and active travel opportunities. It also benefits from Tulloch primary school. Although it is largely residential it is also home to St Johnstone's McDiarmid park and includes the train stabling and servicing area to the north of the lade.

There was 2 drop in events and a conversation event for North Perth, however there were no attendees from the Tulloch community providing comments specific to their area. We received feedback from 4 online respondents specific to this local living area, there was 1 from a general member of the public, another from an elderly person, one from another interested group, and one from business. The results from online surveys are not large enough to make the place standard wheel meaningful; however, the key comments are summarised as follows.

#### Moving Around

Some paths are dirt/rock paths and need upgraded to paved, and sometimes vegetation narrows pavement too much.

#### Public Transport

Considered that there is a need more bus stops, mixed views about the quality of the service and its reliability, and a direct service to Broxden would be beneficial.

#### Traffic & Parking

Issues with pavement parking, parking at corners and in front of driveways, whilst cars drive too fast past the school. Suggestion to have a no parking zone around the school or have a parking attendant.

#### Streets, Squares & Buildings

Streets, paths and drains should be improved and better maintained, whilst buildings are well maintained.

#### Natural Spaces

Appreciate paths along lade, and to Luncarty and Bertha Park. If walking paths were better surfaces, then they would be better used. Suggestions include that the path behind Crematorium should be paved, and that a better walking/cycling route to North Muirton to connect to North Inch would be good. More bins are also sought.

#### Play & Recreation

They don't feel functional enough, the park has basketball but no hoop, and climbing wall is not good, a good range of play equipment for varying ages, including astro turf, tennis courts, and outdoor gym equipment is sought. The local park is poorly maintained, whilst the area could also benefit from local community events.

#### Facilities & Services

Limited range of services which does not include library, post office, or bank, needs to be more locally to get people out of cars, and local food growing is also suggested. The community

centre needs renovation, and there needs to be opportunities for small businesses, and better access to Perth Grammar.

#### Work & Local Economy

Considers mixed zoning would increase options for services within the community, as jobs are not available within Tulloch.

#### Housing & Community

It is considered this meets the needs of the community, whilst an unused site to rear of a block of flats at 124 Tulloch Terrace is suggested for consideration for affordable housing.

#### Social Interaction

Would benefit from an upgraded community centre, and a good coffee shop/café.

#### Identity & Belonging

Does not feel great, and could be improved with more services, and development of unused spaces.

#### Feeling Safe

Mixed feelings, but Hunters in particular has anti-social behaviour issues, and some areas of Tulloch are better than others, also issues with lighting, and dogs and would benefit from better police/community warden presence and improved lighting.

#### Care & Maintenance

At the football pitches and play park, Mathieson Drive, the grass needs cut more, and the pitch at McDiarmid's should also be better maintained. The community centre needs upgraded and pillar at entrance fixed, and vandalism and littering is an issue. Better police/community warden presence is sought.

#### Influence & Sense of Control

Has been sought for over 6 years and would like to see plan for affordable housing progressed. Another respondent feels that although listened to, no action is taken.

## Perth Local Living neighbourhood:

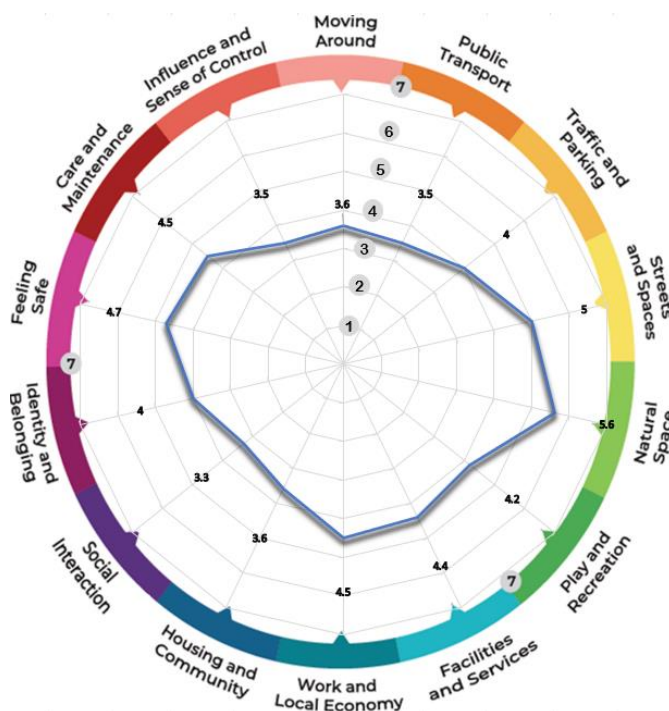
### Almondbank, Huntingtower and Ruthvenfield

This area lies within partially within Methven community council area which is active and Tulloch Community Council area which is not currently active. This area lies to the west of the A9 and includes the substantial employment area within the Inveralmond Industrial estate to the east, as well as the existing Huntingtower, Ruthvenfield communities and Almondbank village to the west. The Strategic Development Area of Almond valley lies within it and is planned for between 704 and 1,000 new homes, whilst the northern part of the Strategic Development Area of Perth West also lies within this Local Living area.

We held 2 drops in events and a conversation event for Perth North. We received feedback from 12 respondents specific to this local living area. We received feedback from the public at large as well as from the following groups:

- elderly
- minorities
- women issues
- other interest groups
- gypsy travellers

Note that due to the tailored nature of conversations not all participants completed scores, this includes drop in events. Note that place standard scores are out of 7. Seven is where the least improvement is needed, and 1 the most.



Summary of feedback for each topic/question (Almondbank, Huntingtower and Ruthvenfield)

### Moving Around (3.6)

For Double Dykes site, the gypsy travellers do not use the path behind their site, due to harassment. Others comment that this route 77 path is welcomed for getting into Inveralmond and Perth city centre by bike, but some issues with pedestrian safety. The path along A85 needs widened, and segregated cycle provision is sought (particularly along A85). There is dangerous traffic on College Mill Road (needs a pavement) and the other side of the pedestrian bridge.

### Public Transport (3.5)

Hourly service from Huntingtower (and at limited times) and you need to walk 10-15 mins to get to more regular services from Tesco, Crieff road. Lacks direct route to Broxden. Service for Huntingtowerfield will end 1st July 2023. Bus service is not frequent enough for Almondbank particularly in evening, and service is slow, uncomfortable and expensive. Bus service not available in evenings.

### Traffic & Parking (4)

Concern around safety gypsy travellers worse because there are no gates at Double Dykes. Need for 20 speed limits on Ruthvenfield road as traffic is much increased since Bertha Park. A85 is also an issue with traffic speeds. Seek improvement to the state of the road at Huntingtowerfield, and reduction of HGVs. A one-way system on Huntingtower brae and Castle brae, and street lighting between East and West Huntingtower is also sought. In Almondbank comments seek warning signs on College Mill Road and the other side of the pedestrian bridge 20mph limit and warning signs on Bridgetown Brae.

### Streets, Squares & Buildings (5)

Suggestion to improve roads between Huntingtowerfield, past the school and up towards the castle. Almondbank war memorial needs attention and some information on the history of the area for visitors using route 77.

### Natural Spaces (5.6)

Generally, feel well connected, and nice for walks, but lade should be better maintained, and whilst communal private greenspaces which were bought residents were mostly improved, the ones behind Almond grove /way have double fences, and are not well looked after. The Gelly wood and Bertha Park wood is particularly well used but could do with a management plan to halt degradation.

### Play & Recreation (4.2)

On Double Dykes site there is need for gypsy travellers' parental supervision as there are no gates stopping kids from getting onto the road. Open space at rear of site not used because of harassment, fears about water safety and as it is not overlooked. Residents can't access portacabin unless staff member on site, but would like to have play things for children to use kept there. There is a lack of playspaces in West Huntingtower and Huntingtowerfield, and at Almondbank there is desire to improve the pitch and remove fencing.

### Facilities & Services (4.4)

On Double Dykes site gypsy travellers suggest it would be good to have classes in the portacabin, and there is a need for easier access to it for residents. West Huntingtower has problems with a high water table and septic tanks and the opportunity to connect

with local sewers would be great. Difficulties accessing doctors' appointments is an issue. Lots of services and facilities are in Perth, and the public transport is poor.

#### Work & Local Economy (4.5)

Gypsy travellers experience prejudicial barriers to work and have to change name and address to secure work. There are very few opportunities locally, and there is a need for better public transport to access opportunities in Perth.

#### Housing & Community (3.6)

Double dykes the pitches gypsy travellers are too small for visitors, are not wheelchair accessible, and there is a need for greater variety in chalet size. At Huntingtower there is good energy efficiency, and control of heating in new build.

#### Social Interaction (3.3)

At Double dykes they need better access to their community portacabin. The football pitch in Almondbank used to be much used but fencing limits that now. Provision of playspaces in West Huntingtower and Huntingtowerfield would improve contact, whilst generally improving public transport would help.

#### Identity & Belonging (4)

Good identity and belonging for Double Dykes gypsy travellers and proud to be from there. One comment mentioned that it is difficult as you need to travel for lots of daily activities, and another sought more community spaces and activities. Almondbank is considered a good place to live, but there is need to make more of local history.

#### Feeling Safe (4.7)

Concern about overlooking from path into gypsy travellers Double Dykes caravans, and proper fencing is needed, and preferred when this was a more rural setting before Bertha Park and expansion of industrial site. Otherwise, mixed response on safety, with drugs, alcohol and poverty cited as issues.

#### Care & Maintenance (4.5)

At Double Dykes there are no play facilities, and nothing offered for gypsy travellers. The lade is in a poor condition due to lack of maintenance (choking/silting issues). In Almondbank improvement to signage and surface on College Mill Road is sought, and flooding issues are also mentioned.

#### Influence & Sense of Control (3.5)

Mixed views as more consultation now, and Community Council and Councillors have been helpful, but there are difficulties getting action on some matters, and it is difficult to influence planning decisions.