



PERTH &  
KINROSS  
COUNCIL



# THE BIG PLACE CONVERSATION

# 1. INTRODUCTION

Throughout 2023 Perth & Kinross Council carried out a large scale community engagement called the Big Place Conversation. We asked communities what is good about their place and what could be improved. The main purpose of these conversations was to help shape the next Local Development Plan and our [Mobility Strategy](#). The evidence however is valuable for teams throughout the Council and for communities to help them with their own local plans.

This report provides a summary of area wide and common ideas across the community councils that make up the Carse of Gowrie Ward. Summary reports are also available for the whole of Perth and Kinross and for each Community Council. Community Council reports provide greater detail of specific issues, often to settlement level. All reports are available on the Big Place Conversation [Results Page](#).

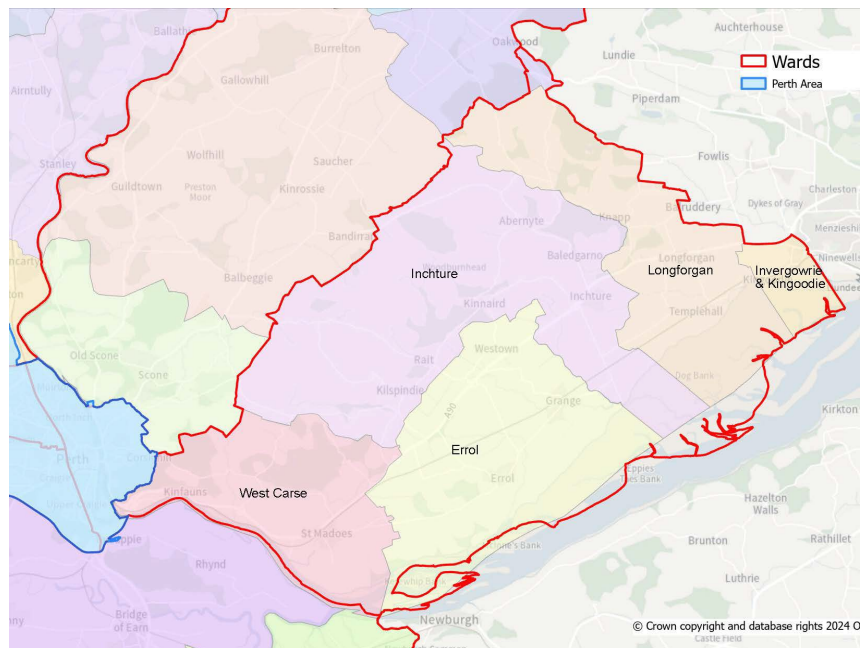
## CARSE OF GOWRIE WARD

This report focuses the Carse of Gowrie ward, which stretches along the northern shore of the Firth of Tay between Perth and Dundee. The ward includes the following Community Councils. We have summarised comments for each of the Community Councils in the following reports available on the Big Place Conversation Results Page available at [www.pkc.gov.uk/bigplaceconversation](http://www.pkc.gov.uk/bigplaceconversation).

- [West Carse](#)
- [Errol](#)
- [Inchture](#)
- [Longforgan](#)
- [Invergowrie and Kingoodie](#)

A total of 112 participants in the Carse of Gowrie took part in the Big Place Conversation through the online survey, and 8 events including a conversation with Errol Primary School. We received feedback from the public at large and the following groups:

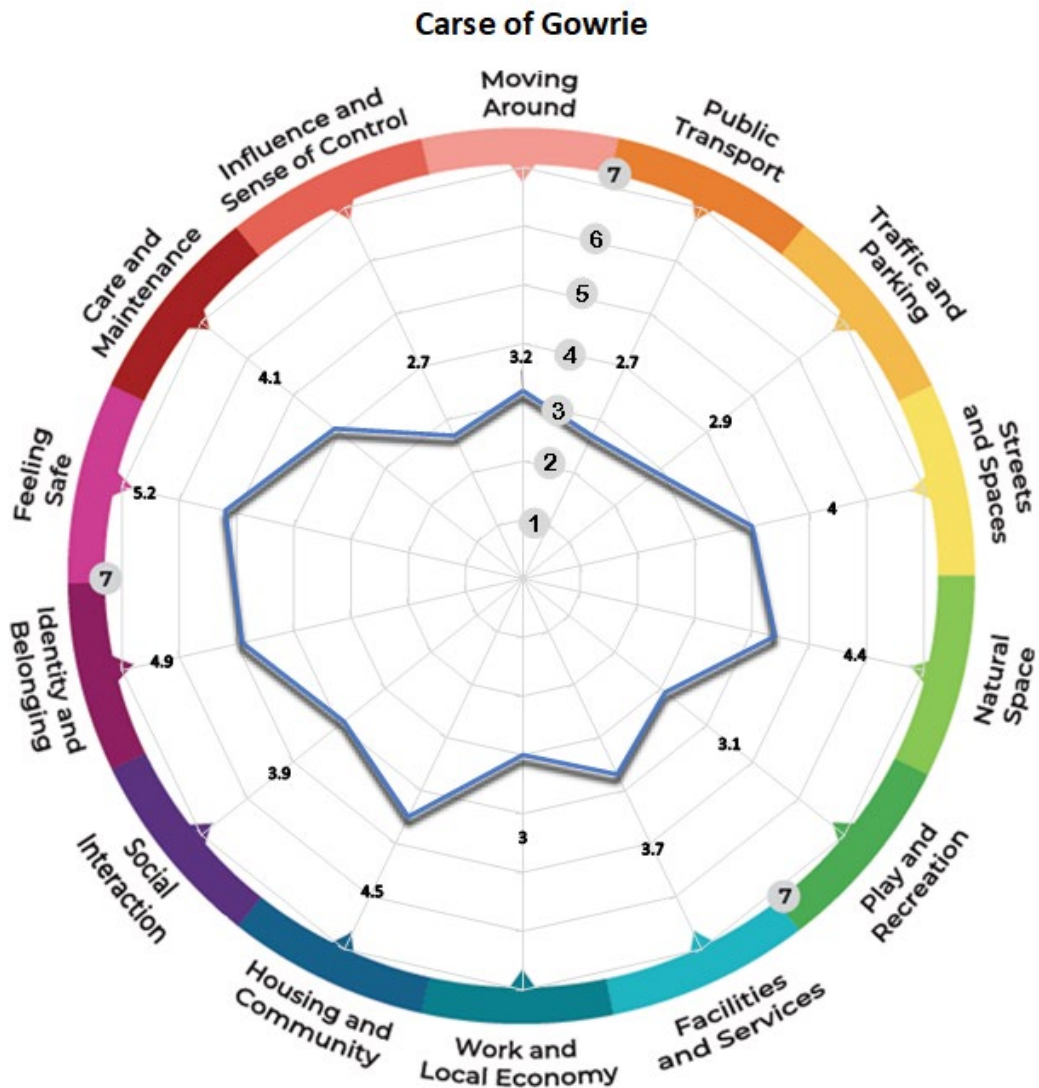
- Children and young people
- Elderly
- Community Council
- Women issues
- Disabled
- Disadvantaged
- Business representatives



## 2. AREA WIDE SUMMARY

### PLACE STANDARD SCORES

We used the [Place Standard](#) approach for our community engagement, a tool widely used across Scotland. The Place Standard includes questions on 14 themes. Participants provide comments and scores out of 7 for each theme. Seven is where the least improvement is needed, and 1 the most. Note that due to the tailored nature of conversations not all participants completed scores.



## SUMMARY OF FEEDBACK AT WARD LEVEL

This section includes a summary of issues noted that relate to the wider area of the Carse of Gowrie Ward and issues common across the community council areas. Place standard scores are given for each category. Comments are recorded as positive (+), negative (-) or suggestions (o).

### 1. MOVING AROUND (3.2)

#### HOW EASY IS IT TO WALK, WHEEL OR CYCLE TO PLACES I NEED TO AND WANT TO GO?

---

- + Walking within settlements is reasonably easy
- + Excellent countryside walks
- + National Cycle Route 77 connects Dundee to Pitlochry via Carse of Gowrie
- + Core paths are well-used by communities
- Poor quality active travel network makes walking or cycling between settlements unfeasible
- Limited active travel connections to Perth
- Cycling primarily on-road feels unsafe due to high traffic volume and speed
- Heavy industrial traffic is consistently present
- Poor condition of paths, pavements, and road surfaces
- Overgrown vegetation restricts accessibility
- Narrow or absent pavements in some areas
- Insufficient lighting along paths
- Congestion on active travel routes during peak times (e.g. school drop-offs/pickups)
- Safe crossings missing at key locations (e.g. near schools)
- Lack of outdoor seating and resting places
- Paths and buildings not easily accessible for people with disabilities
- o Enhance and expand the active travel network through new developments
- o Develop off-road active travel routes connecting settlements and linking to Perth
- o Build bypass around settlements to reduce traffic and improve pedestrian safety
- o Install more seating and outdoor furniture
- o Create more safe crossings, especially near schools

### 2. PUBLIC TRANSPORT (2.7)

#### HOW EASY IS IT TO GET TO WHERE I NEED TO OR WANT TO GO BY BUS, TRAIN, OR OTHER FORMS OF PUBLIC TRANSPORT?

---

- + Ember bus service is an asset
- + Free bus travel for young people and seniors
- + Park-and-Choose facility to be developed in Carse at West Kinfauns
- Poor bus service provision overall
- Timetables do not accommodate commuter needs
- Limited evening and weekend services
- Frequent breakdowns and cancellations make services unreliable
- Expensive ticket prices
- Rural residents face difficulties accessing buses
- Lack of timely information about bus delays or cancellations
- Poor path conditions and inadequate lighting around bus stops
- o Reintroduce a train station or halt in Carse
- o Explore community transport options, such as shuttle buses or car sharing schemes
- o Revise bus timetables to increase frequency of services and improve reliability
- o Upgrade bus stops with shelters, live trackers, and better lighting
- o Transition to electric buses with Wi-Fi, charging points, and bike racks.
- o Introduce dedicated bus lanes

### 3. TRAFFIC & PARKING (2.9)

#### HOW DOES TRAFFIC AND PARKING AFFECT ME WHEN I AM OUT AND ABOUT IN MY PLACE?

---

- Traffic and parking issues are significant safety concerns
- High traffic volumes within settlements
- Heavy industrial vehicles pass through residential areas
- Speeding within and around settlements
- Insufficient formal parking, especially near facilities and services
- On-street parking causes congestion and blocks access for buses and lorries
- Congestion outside schools during drop-off and pick-up times
- o Develop bypass to redirect HGVs away from villages
- o Implement more traffic-calming measures, such as expansion of 20mph zones
- o Improve signposting and utilisation of existing car parks
- o Increase the presence of traffic wardens to enforce parking rules

### 4. STREETS, SQUARES & BUILDINGS (4)

#### WHAT ARE THE STREETS, SQUARES, AND BUILDINGS LIKE IN MY PLACE?

---

- + Historic buildings and monuments add character
- + Local groups (e.g. In Blooms) maintain streets and public spaces
- Traffic and parking issues detract from the aesthetics of places
- Prolonged repair and maintenance times
- Vacant and derelict properties negatively affect appearances
- o Secure funding for maintaining historic buildings
- o Upgrade public spaces, such as squares, to enhance community use
- o Regenerate vacant and derelict sites

### 5. NATURAL SPACES (4.4)

#### HOW WELL AM I CONNECTED TO NATURE IN MY PLACE?

---

- + River Tay is a great natural asset
- + Abundance of nature, including fields, hills, forests and the river
- + Good quality parks and other urban greenspaces
- + Greenbelt designation helps preserve natural areas
- Poor path conditions limits access to natural sites
- Very limited access for individuals with reduced mobility
- Traffic and parking issues hinder access to natural sites
- Insufficient provision of urban greenspaces in smaller settlements
- o Improve access to and create more opportunities along the River Tay
- o Increase community growing opportunities (e.g. for orchards, allotments, gardens)
- o Design better-quality blue and green infrastructure in urban areas
- o Add seating and sheltered areas in natural spaces
- o Designate, safeguard and enhance important natural spaces

### 6. PLAY & RECREATION (3.1)

#### WHAT ARE THE SPACES (PARKS, PITCHES ETC) LIKE FOR PLAY, RECREATION, SPORT, AND SPENDING TIME WITH FRIENDS IN AND AROUND MY PLACE?

---

- + Some good indoor venues for activities (e.g. village halls, bowling clubs)
- + The Madoch Centre is an asset for Carse and provides a variety of activities
- + Parks are well-used for play and recreation
- + Great opportunities for recreational walks
- Some play and sports facilities are in poor condition
- Shortage of indoor venues across the area

- Limited spaces and activities for young people
- Some rural areas lack play and recreation opportunities entirely
- Play areas lack exciting and challenging items for older children
- Flooding in parks is a common issue
- No Mow grassland management changes have reduced informal recreation spaces
- Anti-social behaviour in parks and play areas restricts use
- o Develop adaptable, multi-use indoor and outdoor spaces
- o Designate, protect and enhance path network for recreation
- o Upgrade parks with more free opportunities, like exercise equipment
- o Improve active travel connections to parks and leisure facilities
- o Create more activities and dedicated spaces for young people (e.g. skateparks)
- o Separate play areas for children and teenagers

## **7. FACILITIES & SERVICES (3.7)**

### **WHAT IS MY PLACE LIKE FOR ACCESSING SERVICES WE NEED?**

---

- + Proximity to Perth and Dundee allows access to a variety of facilities and services
- + Village shops and small businesses provide essentials goods
- + Availability of recycling facilities
- + Mobile services (e.g. library and fish van) support the area
- Inadequate provision of key services (e.g. post office, library, shops)
- Poor healthcare service provision (e.g. GP, dentist)
- Lack of indoor community facilities
- Poor digital connectivity in rural areas
- No local secondary school, forcing long commutes for young people
- Public transport issues further limit access to facilities
- Insufficient amenities for young people
- Concern that new development is increasing pressure on facilities and services
- o Develop enough to deliver essential facilities and services without losing rural character
- o Expand mobile service provision to include more variety and expand routes
- o Create a hub for facilities and services in Carse
- o Make better use of existing community spaces, such as schools and village halls
- o Improve active travel and public transport connections to facilities and services

## **8. WORK & LOCAL ECONOMY (3)**

### **ARE THERE OPPORTUNITIES FOR PEOPLE TO WORK, TRAIN OR VOLUNTEER LOCALLY?**

---

- + Good access to employment and training opportunities in Perth and Dundee
- + Local businesses provide some job opportunities
- Limited local work opportunities, most residents commute
- Public transport issues restrict access to employment
- High cost of space for small businesses
- Expansion of industrial areas close to residential neighbourhoods
- o Simplify processes for property owners to establish mixed-use spaces
- o Develop and promote local tourism sector
- o Provide more support for local businesses and start-ups

## **9. HOUSING & COMMUNITY (4.5)**

### **DO THE HOMES IN MY AREA SUPPORT THE NEEDS OF THE COMMUNITY?**

---

- + Strong sense of community throughout Carse
- + A decent mix of housing types
- + High-quality housing stock in general

- Limited rental options
- Insufficient affordable and social housing
- Lack of smaller homes, such as flats and bungalows
- Young people migrating out of area due to lack of suitable housing
- Older homes often have dampness and energy efficiency issues
- Concerns over development negatively impacting rural character
- o Ensure better separation between industrial and residential areas
- o Prioritise redevelopment of brownfield sites
- o Safeguard greenbelt from development
- o Collaborate on planning processes in LDP3 to align with community needs
- o Build enough housing for future needs while preserving rural character of the area

## **10. SOCIAL INTERACTION (3.9)**

### **ARE THERE PLACES WHERE I CAN GO TO MEET AND TALK WITH FRIENDS AND OTHER PEOPLE?**

---

- + A variety of venues for social activities (e.g. halls, churches, schools, pubs, cafes, parks)
- + Outdoor spaces, such as parks, are popular for socialising (e.g. dog-walking)
- + Local businesses support community connections
- + Warm spaces provide important hubs for social activities year-round
- + Community groups organise events like Gala Days and markets
- + Facebook groups help advertise local opportunities
- + Good opportunities for children and parents to interact socially
- Small settlements and rural areas have fewer social opportunities
- Outdoor spaces often lack seating and shelter for socialising
- Transport issues restrict access to social venues
- Some public buildings are underutilised
- o Increase outdoor seating and sheltered areas
- o Create a system for people to donate benches
- o Modernise spaces to create multi-functional community hubs
- o Increase community outreach efforts for rural residents

## **11. IDENTITY & BELONGING (4.9)**

### **HOW PROUD DO I FEEL ABOUT MY PLACE, AND DO I FEEL I BELONG?**

---

- + Strong sense of community pride and belonging
- + Welcoming communities with good integration of newcomers
- + People enjoy learning about local history, which fosters connection and pride
- + Each place has a unique identity
- + Active community involvement in events, activities and volunteering
- Rural areas sometimes feel disconnected and less cohesive
- Social cohesion can still be improved in some areas
- o Focus more on engaging specific age groups, such as young people
- o Organise more events and projects to unite communities
- o Increase access to local heritage in public spaces

## **12. FEELING SAFE (5.2)**

### **HOW SAFE DO I FEEL IN MY PLACE?**

---

- + The area generally feels safe
- + Low levels of crime and anti-social behaviour
- Traffic-related safety concerns remain an issue (as outlined above)
- Poor lighting in parks and along paths reduces safety

- Anti-social behaviour by youth in parks and play areas
- Hazardous waste (e.g. vapes, broken glass, drug paraphernalia) in public spaces
- Vacant and derelict buildings raise safety concerns
- Flooding poses a safety risk in some areas
- o Install lights along paths, with solar-powered options where possible

### **13. CARE & MAINTENANCE (4.1)**

#### **ARE THERE SPACES OR BUILDINGS THAT NEED CLEANING UP OR FIXING IN THE AREA?**

---

- + Most places are well-maintained
- + Volunteer groups like In Bloom provide excellent upkeep
- Vacant, derelict and older properties need attention
- Issues with dog fouling, litter, and fly-tipping
- No-mow sites appear unkempt
- Blocked drains exacerbate flooding issues
- Graffiti
- Poor path, pavement and road conditions
- Lampposts in need of repainting
- Public bins overflow in key locations, such as parks and shops
- Insufficient provision of salt bins for winter conditions
- o Maintain and enhance flood mitigation systems
- o Monitor litter from construction crews
- o Preserve landscape barriers between roads and residential areas

### **14. INFLUENCE & SENSE OF CONTROL (2.7)**

#### **WHEN THINGS HAPPEN IN MY PLACE, HOW EASY IS IT FOR ME TO SAY WHAT I THINK AND BE LISTENED TO?**

---

- + Active Community Councils, School Parent Councils, local councillors, and Development Trusts
- + Development Trusts have the ability to hold property for the community
- + Communication with PKC is improving
- Many feel they can voice opinions but are not truly listened to
- Complaints to council are dismissed as non-issues
- Distrust in the planning system due to national government overruling local planning decisions
- Uncertainty about whom contact for information and support
- Difficulty accessing information about local issues, land ownership, and activities
- No central climate change group in Carse of Gowrie
- o Increase devolved power to local communities for matters affecting them
- o Encourage local participation in volunteering and community leadership
- o Raise the visibility of local groups and activities
- o Improve communication from PKC, particularly regarding planning matters