

PERTH AND KINROSS LOCAL DEVELOPMENT PLAN 3

BIG PLACE CONVERSATION 2023

STRATHALLAN WARD SUMMARY

December 2024



THE BIG PLACE CONVERSATION

1. INTRODUCTION

Throughout 2023 Perth & Kinross Council carried out a large scale community engagement called the Big Place Conversation. We asked communities what is good about their place and what could be improved. The main purpose of these conversations was to help shape the next Local Development Plan and our [Mobility Strategy](#). The evidence however is valuable for teams throughout the Council and for communities to help them with their own local plans.

This report provides a summary of area wide and common ideas across the community councils that make up the Strathallan Ward. Summary reports are also available for the whole of Perth and Kinross and for each Community Council. Community Council reports provide greater detail of specific issues, often to settlement level. All reports are available on the Big Place Conversation [Results Page](#).

STRATHALLAN WARD

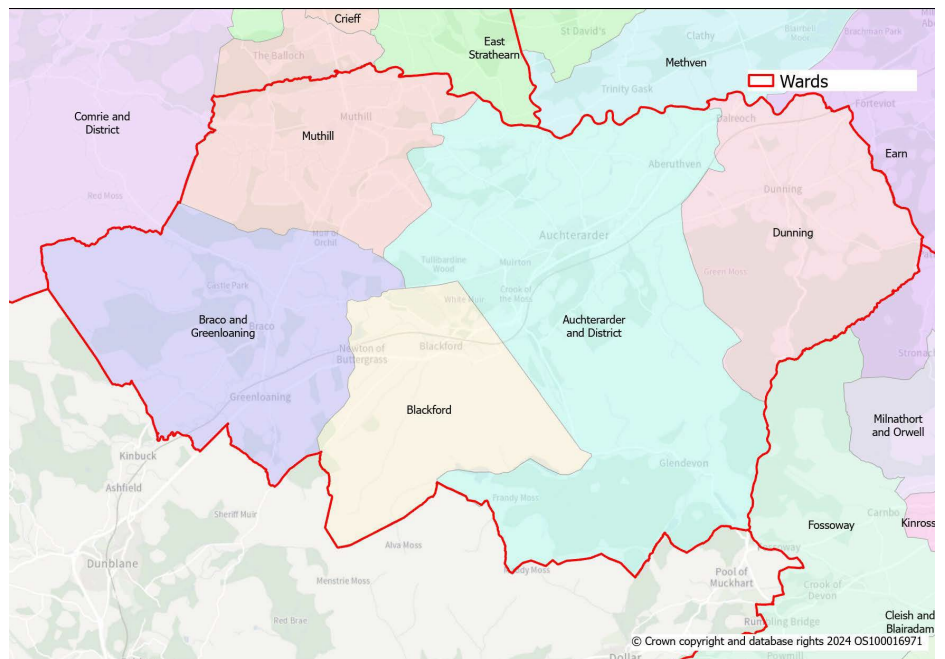
The Strathallan ward covers a primarily rural area to the south-west of Perth and Kinross Council area. Auchterarder is the main settlement, offering the wider range of facilities and services. Other settlements include Dunning, Aberuthven, Blackford, Braco and Greenloaning.

This ward includes the community council areas of Auchterarder and District; Blackford; Braco and Greenloaning; Dunning; and the southern part of Muthill. Summaries for the Community Councils that received responses can be found below.

- [Auchterarder and District](#)
- [Blackford](#)
- [Dunning](#)

We received a total of 61 responses through a combination of 4 in-person events, organised in Auchterarder, Dunning, Blackford and Aberuthven, and online surveys. Responses include input from the public at large, and the following groups:

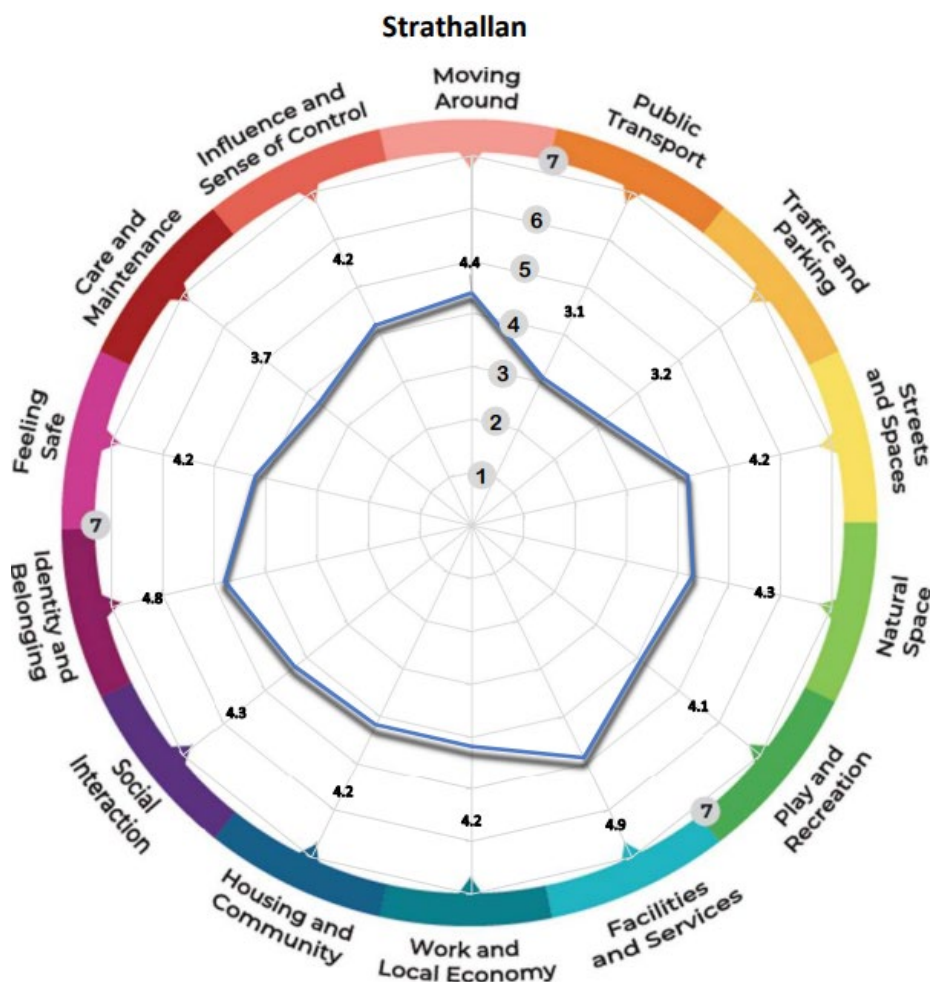
- Elderly
- Women issues
- Children (under 12s)



2. AREA WIDE SUMMARY

PLACE STANDARD SCORES

We used the [Place Standard](#) approach for our community engagement, a tool widely used across Scotland. The Place Standard includes questions on 14 themes. Participants provide comments and scores out of 7 for each theme. Seven is where the least improvement is needed, and 1 the most. Note that due to the tailored nature of conversations not all participants completed scores.



STRATHALLAN WARD SUMMARY

This section includes a summary of issues noted that relate to the wider area of the Strathallan Ward and issues common across the community council areas. Place standard scores are given for each category. Comments are recorded as positive (+), negative (-) or suggestions (o).

1. MOVING AROUND (4.4)

HOW EASY IS IT TO WALK, WHEEL OR CYCLE TO PLACES I NEED TO AND WANT TO GO?

- + People appreciate the presence of suitable routes for people walking and cycling in the built up areas
- + Travelling to school by walking and cycling is seen as a feasible option in Aberuthven
- + It is possible to move within towns and villages by walking
- Some believe distances are too long to walk
- Lack of pavements on roads outside of main settlements make it difficult for people in rural areas to walk or cycle

- The high volume of road traffic impact the attractiveness of walking and cycling
- Parked vehicles in dangerous locations make crossing the street difficult for people walking
- Lack of suitable crossing points on busy streets
- Footways are often uneven and poorly maintained
- Several points offer limited accessibility for wheelchair users
- o Better links for people to walk and cycle from Auchterarder to Gleneagles train station
- o Creation of more active travel segregated infrastructure and suitable crossing points
- o Development of a more robust network of paths to link villages
- o Secure cycle parking in town and village centres
- o Improvements to footways and dropped kerb provision
- o Manage traffic volumes to encourage cycling

2. PUBLIC TRANSPORT (3.1)

HOW EASY IS IT TO GET TO WHERE I NEED TO OR WANT TO GO BY BUS, TRAIN, OR OTHER FORMS OF PUBLIC TRANSPORT?

- + Good number of bus stops accessible to most
- + The town bus at Auchterarder offers a convenient option for families to travel within the town
- Bus services lack reliability and punctuality
- Limited frequency of certain bus routes make them not a suitable alternative to driving
- Rural communities feel their bus services are poor, with limited connections for further travel
- The network links towns and villages with Perth and Stirling but lacks connectivity beyond those points
- No coordination between bus and rail services, making it difficult to combine
- Train services from Gleneagles station are not frequent enough, with most trains not stopping
- Night time options are not reliable
- o Changes to bus routes to include more rural areas
- o Focus on transport exchanges connecting bus and rail services
- o Improvements to connectivity between Gleneagles rail station and Auchterarder
- o Increase in number of trains serving Gleneagles station
- o A reduction in the fare for Auchterarder town bus service
- o More information on bus network available to users

3. TRAFFIC & PARKING (3.2)

HOW DOES TRAFFIC AND PARKING AFFECT ME WHEN I AM OUT AND ABOUT IN MY PLACE?

- + Dunning enjoys sufficient parking capacity thanks to the car park at Rollo Park
- + In Aberuthven, drivers appear to observe parking restrictions near the school
- Vehicle speeds through towns and villages are a concern
- High levels of congestion in a number of locations, hindering the experience of streets and public areas
- Limited parking capacity and poor parking practices. Drivers leave their cars for too long, impeding other users from accessing specific locations
- Parking restrictions are often not observed
- Some blind spots in the road network create dangerous conditions for road users
- o Increase in crossing points at busy locations
- o Introduction of lower speed limits on B roads, with ideally 30mph being implemented
- o Consideration to larger car parks in the fringes of built up areas to reduce congestion and make towns and villages more welcoming for people walking and cycling
- o Better parking enforcement

- Creation of a bypass road to reduce traffic through Auchterarder

4. STREETS, SQUARES & BUILDINGS (4.2)

WHAT ARE THE STREETS, SQUARES, AND BUILDINGS LIKE IN MY PLACE?

- + Good number of attractive spaces in the area
- + Historic buildings contribute to the quality of place, and new buildings appear to mix well
- + Most places are well maintained
- + High quality green spaces also enhance the perception of the place
- + New street furniture being installed to create public spaces for locals to enjoy
- + Local groups such as Auchterarder in Bloom or Core Path Working Group collaborate to maintain the attractive of public spaces
- Traffic congestion and high number of vehicles parked impact the enjoyment of public areas
- Presence of some building in poor condition
- Uneven footways
- Some parts of Auchterarder lack greenery
- Some of the buildings are painted in unappealing colours
- Lack of a public square in Auchterarder
- Continue maintenance work to ensure spaces remain available to the public
- Improvements to footways and kerbs
- Additional greenery in public spaces(+/-)

5. NATURAL SPACES (4.3)

HOW WELL AM I CONNECTED TO NATURE IN MY PLACE?

- + The variety and quality of greenspaces, parks and walks was appreciated by residents
- + The majority of paths around Dunning appear well connected, creating an attractive network
- + Small private green spaces such as front gardens also contribute to the feeling of connection with nature
- + Local groups are continuously improving green spaces around town
- Need for better enforcement of site clearing prior to planning permission being granted
- Lack of green spaces on the eastern end of Auchterarder High Street
- Some dog owners fail to keep animals under control in paths and walks
- Possibility to improve paths and walks at specific locations in Blackford
- General enhancement of footways and path surfaces connecting built up areas with natural spaces
- Ensure new housing developments build a well designed and connected network of paths and walks
- Include more parks in the development plans
- Limit housebuilding to preserve green space

6. PLAY & RECREATION (4.1)

WHAT ARE THE SPACES (PARKS, PITCHES ETC) LIKE FOR PLAY, RECREATION, SPORT, AND SPENDING TIME WITH FRIENDS IN AND AROUND MY PLACE?

- + Presence of high quality facilities in the area
- + Some streets in Blackford allow children to play outside
- + The renovated Primrose Park has delivered a significant improvement for children in Auchterarder
- + Several clubs and organisations are using the new park, with premises that are fit for purpose
- + Auchterarder offers activities for all age groups

- Some items in play facilities require maintenance
- Premises in Blackford need some upkeep and renovation work
- Limited options for play and recreation in Dunning outside of the tennis courts
- No options for residents of Auchterarder aside from the new park located to the west of the town
- The facilities at the school in Auchterarder are in poor condition and need replaced
- The sports facilities that were attached to the new housing development have not yet been delivered, despite houses being built
- o Residents from Dunning suggested the creation of a flexible sports venue
- o Completion of scheduled facilities near school in Auchterarder
- o Dedicated running facilities for Auchterarder to give runners options outside of the public roads
- o Need to provide more options for young people, in an attempt to reduce the likelihood of antisocial behaviour taking place
- o Allowing access to the school tennis courts

7. FACILITIES & SERVICES (4.9)

WHAT IS MY PLACE LIKE FOR ACCESSING SERVICES WE NEED?

- + Some responses considered the facilities available in the area are suitable
- + Local village shops appear to offer sufficient choice
- + Facilities in Auchterarder provide service to residents in Dunning, considering them adequate
- + Active businesses community in Auchterarder High Street, with low vacancy rates
- + Library in Auchterarder provides a good service to the town and nearby villages
- Some services are missing in specific locations, such as doctor and dental surgeries in Aberuthven, or recycling facilities in Dunning
- Reliance on Auchterarder for certain services
- Dunning needs a replacement of the water main to secure provision
- Broadband performance is often poor in Auchterarder and Dunning
- No swimming pool in Auchterarder, users need to travel to Stirling
- Difficult to get appointments for the medical practice and dental surgery
- o Increase of retail and sporting facilities in villages
- o Possibility of opening libraries in smaller settlements to reduce reliance on Auchterarder's
- o Include glass in recycling collection
- o Additional food shopping options with more affordable alternatives in Auchterarder
- o Improvements to healthcare provision to increase the availability of face to face appointments

8. WORK & LOCAL ECONOMY (4.2)

ARE THERE OPPORTUNITIES FOR PEOPLE TO WORK, TRAIN OR VOLUNTEER LOCALLY?

- + Some comments highlight there are opportunities to work, train and volunteer locally in Auchterarder
- + A good mix of jobs including working from home options
- Other responses believe the job market is limited to education, hospitality or retail, with no options for specialised roles
- o Suggestions to improve public transport links to Glasgow, Edinburgh, Perth and Stirling and open wider employment options for local residents
- o Consider collaboration with Stirling University to enable opportunities for workforce from the area

9. HOUSING & COMMUNITY (4.2)

DO THE HOMES IN MY AREA SUPPORT THE NEEDS OF THE COMMUNITY?

- + General perception of current housing offer being suitable, with a variety of styles and sizes available
- + Localised responses highlight the current size of their village feels adequate, with friends and family being able to live nearby
- + The availability of new houses in the area was seen as a positive addition
- The housing stock in Dunning is limited, with the existing options being small and not appealing to incomers
- Local housing stock is unaffordable to lower income families for both buy and rent options
- New housing developments in Auchterarder are increasing strain on local infrastructure and services
- o Need to observe local vernacular when considering new housing, with priority to better quality designs to avoid the repetition of uninteresting, excessively small houses
- o Developers should make a positive contribution to the community
- o New housing in Auchterarder should be accompanied by improvements to infrastructure, with better links to the A9 and improved public transport options
- o Need to restrict the construction of new housing in Auchterarder, with all vacant land being targeted
- o Need to protect open and green spaces for the local community instead of prioritising housebuilding
- o Developments should include affordable and social housing options

10. SOCIAL INTERACTION (4.3)

ARE THERE PLACES WHERE I CAN GO TO MEET AND TALK WITH FRIENDS AND OTHER PEOPLE?

- + A wide range of premises, both public and private, are available in towns and villages in the area
- + Several community groups available for people to join
- Dunning appears to have more limited choices, with some organisations seeing their numbers dwindle
- The public park in Dunning is not perceived as an asset for the public to use, but an annex to the local golf club instead
- o The provision of additional venues would improve choices for the local community and encourage stronger social interaction
- o More groups for mums and babies would be a welcome addition
- o Creating a wider range of options to include live music and outdoor eating spaces

11. IDENTITY & BELONGING (4.8)

HOW PROUD DO I FEEL ABOUT MY PLACE, AND DO I FEEL I BELONG?

- + A strong sense of community, with a good mix of ages
- + Towns and villages in the area are seen as welcoming places, with friendly neighbours and a good sense of pride
- The character and feel of Auchterarder has been negative impacted by its recent growth
- o Need to create opportunities to celebrate locally
- o Should work on presenting the history of places to residents and visitors to increase awareness

12. FEELING SAFE (4.2)

HOW SAFE DO I FEEL IN MY PLACE?

- + Overall strong sense of safety in the area
- + Auchterarder and the villages provide safe environments for everyone to walk around regardless of time of day, age or gender
- Issues with antisocial behaviour can make residents feel vulnerable in specific locations
- Road safety concerns, with volume of traffic and speeds making people uncomfortable
- o Improved lighting in open spaces, particularly parks
- o Creation of options for young people to socialise and interact to reduce the likelihood of antisocial behaviour taking place
- o Addition of CCTV on Auchterarder High Street to discourage behaviours that concern local residents

13. CARE & MAINTENANCE (3.7)

ARE THERE SPACES OR BUILDINGS THAT NEED CLEANING UP OR FIXING IN THE AREA?

- + Good overall conditions of streets and green spaces
- + The local community take pride and organise litter picks and maintenance of public spaces
- Localised examples of untidy spaces, with maintenance required
- Specific buildings and public places appear derelict or unkempt
- The School in Auchterarder seems to need better maintenance
- Some Japanese Knotweed has been seen near the villages, and would require close monitoring
- o Perth and Kinross Council should support local groups with extra funding
- o Additional support for building owners to keep premises in good condition
- o Increase tree planning
- o Penalise dog owners that don't clean after their animals

14. INFLUENCE & SENSE OF CONTROL (4.2)

WHEN THINGS HAPPEN IN MY PLACE, HOW EASY IS IT FOR ME TO SAY WHAT I THINK AND BE LISTENED TO?

- + The presence of local groups and associations provide opportunities for people to get involved
- + Robust community engagement
- + Participation in Auchterarder has improved thanks to the Community Action Plan
- + Local elected members are visible and accessible
- Young people in Aberuthven feel it's the first time they are consulted about their place
- The Council often fails to consider feedback provided and continue with their original plan, specifically around the need to provide more infrastructure when allowing new housing
- Issues with road and footway maintenance get reported but not always repaired
- The latest changes to electoral boundaries have created some confusion, with areas now being part of Stirling for electoral purposes
- o Community Councils should have more responsibility in local decision making
- o Perth and Kinross Council and local groups should enable more interactive communication with residents, providing options other than online
- o Consultation could be more effective if it focused on specific subject instead of all-around questionnaire