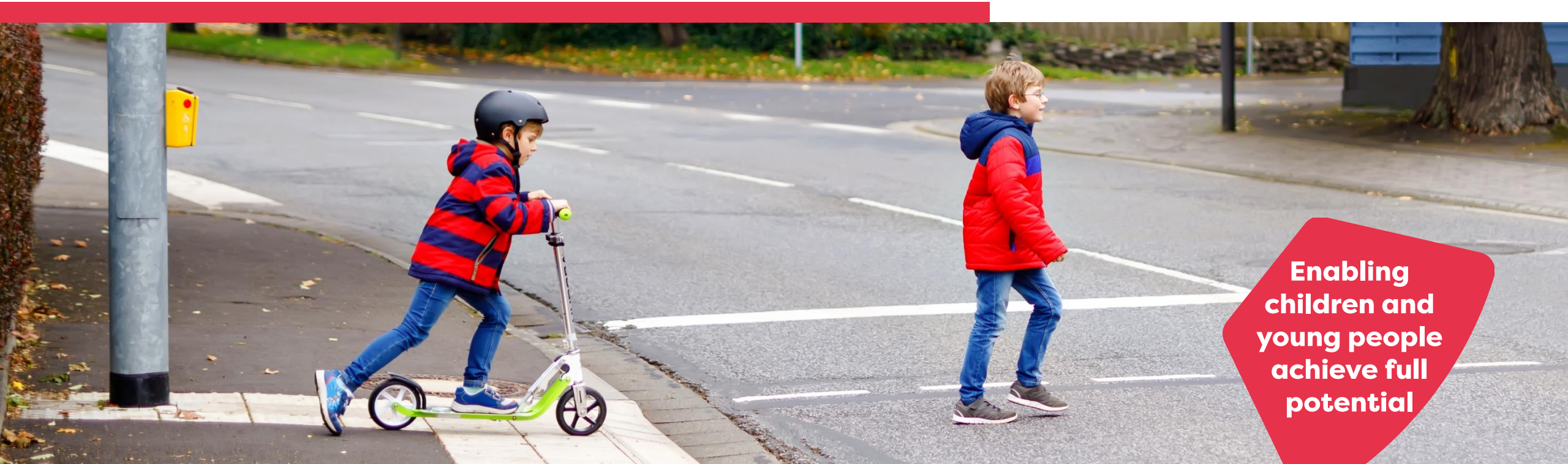


# Statutory Consultation

## Intensive Support Provisions (ISPs)



**Enabling  
children and  
young people  
achieve full  
potential**

# Panel / Introduction

---

<b>David Macluskey</b>	Education & Learning – Strategic Lead (Chief Education Officer)
<b>Samantha O'Mahoney-Magee</b>	Acting Depute Head Teacher (Support) Community School of Auchterarder
<b>Fiona MacKay</b>	Quality Improvement Manager Inclusion and Additional Support
<b>Sarah Stephen</b>	Quality Improvement Officer (QIO) Inclusion
<b>Karen Robertson</b>	Service Manager, Business Services

# Agenda

---

- Welcome and Introductions
- The Proposal
  - Support for learning and additional support needs
  - What is an ISP
  - Educational benefits
- Statutory consultation process
- Questions



# The Proposal

---

This meeting provides information on the following proposal:

That subject to the outcome of this consultation exercise, the Council proposes to: Permanently establish a new Intensive Support Provision at Community School of Auchterarder for pupils with Additional Support Needs with effect from **August 2026**.

# Background: PKC Vision



Our vision is for a Perth and Kinross where everyone can live life well, free from poverty and inequality.

Our Corporate Plan aims to ensure that children and young people grow up safe, respected, well-educated and confident in their ability to realise their full potential.



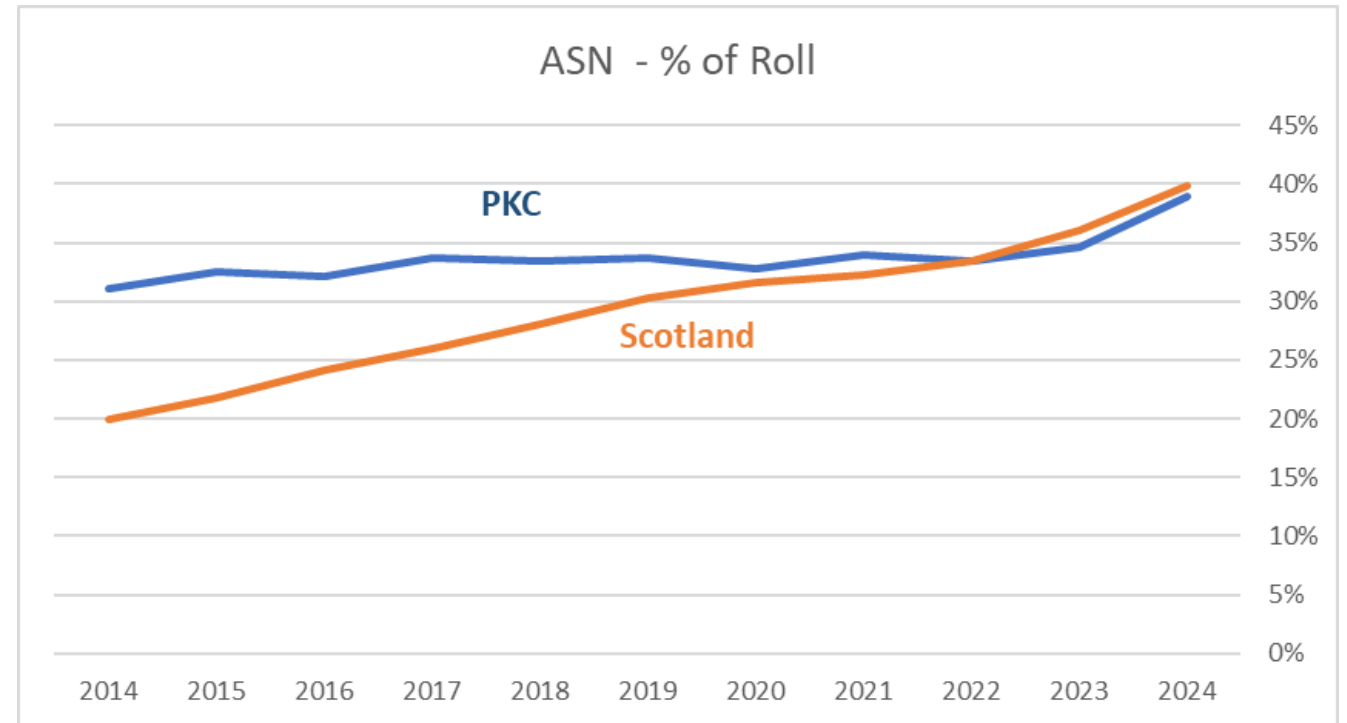
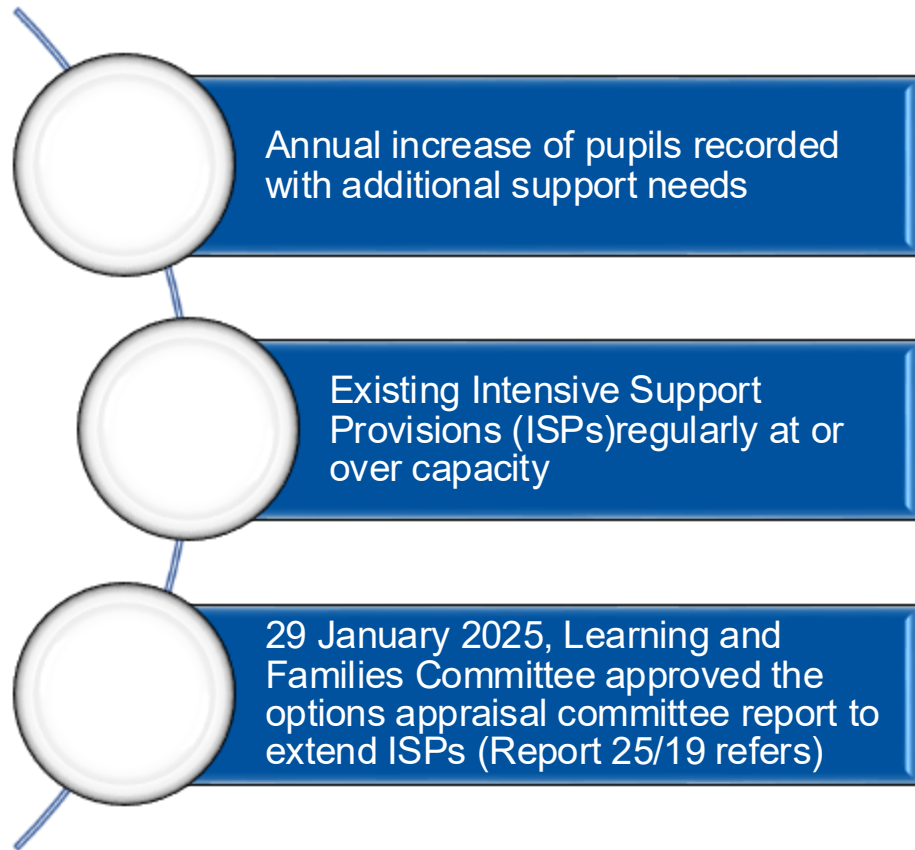
# Statutory Duties of a local authority

---

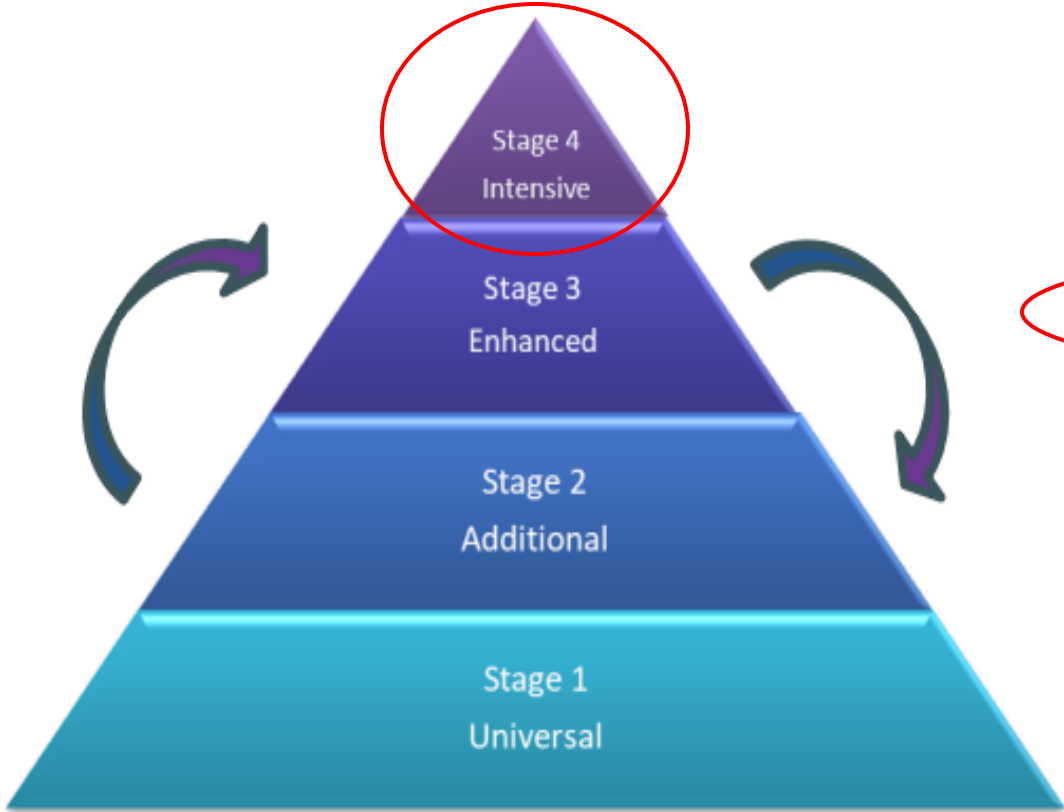


Education (Additional Support for Learning) (Scotland) Act 2004, amended 2009 created the term 'additional support needs' and places duties on local authorities to identify, meet and keep under review the needs of pupils for whom they are responsible.

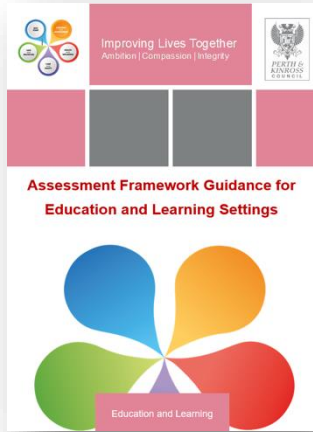
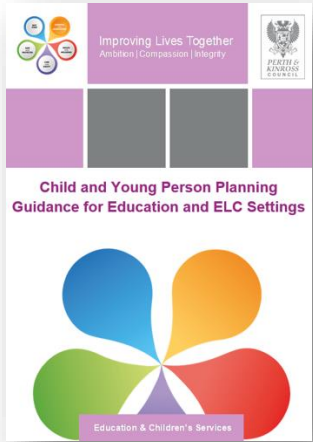
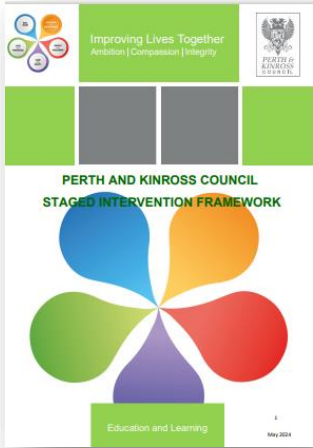
# Background



# Support for Learning – staged levels



Stage 1	Universal	Identification of needs and classroom-based interventions
Stage 2	Additional	Assessment, planning, approaches and interventions by school-based staff
Stage 3	Enhanced	Assessment, planning and interventions, including targeted services and partner agencies
Stage 4	Intensive	Assessment, planning and delivery of education out with a mainstream setting





# Current schools with ISPs

---

## Primary Provisions

Coupar Angus

Crieff

Errol

Inch View

Oakbank

RDM

Riverside

Tulloch

Viewlands (New- Phase 1)

## Secondary Provisions

Berth Park

Blairgowrie High

Crieff High

Perth Academy

Perth Grammar

Perth High (New – Phase 1)

Kinross High (New – Phase 1)

## All-through Provision

Breadalbane

# Need for a CSoA Intensive Support Provision



Children and young people with the most complex and multiple needs require to access special education.

- Currently, 4 primary school-aged children living within the CSoA catchment area attend an alternative ISP.
- A further 4 children within the CSoA catchment area attend an alternative secondary ISP.
- Additionally, several known children are expected to be considered at an upcoming transition panel for potential placement from August 2026.

# What is an Intensive Support Provision?



- A specialist educational setting that provides education through a small group approach, a bespoke environment, and a high staffing ratio.
- The curriculum is highly flexible and responsive to individual needs, focusing on key areas such as Language & Communication, Self Awareness & Regulation, Independent Skills, Literacy & Numeracy and wider curricular areas.
- Works closely with key partners such as Speech and Language Therapists (SaLT), Occupational Therapists (OT) and social work.
- Supports enhanced and bespoke transitions for pre & post-school.

# Profile of needs commonly supported in an ISP

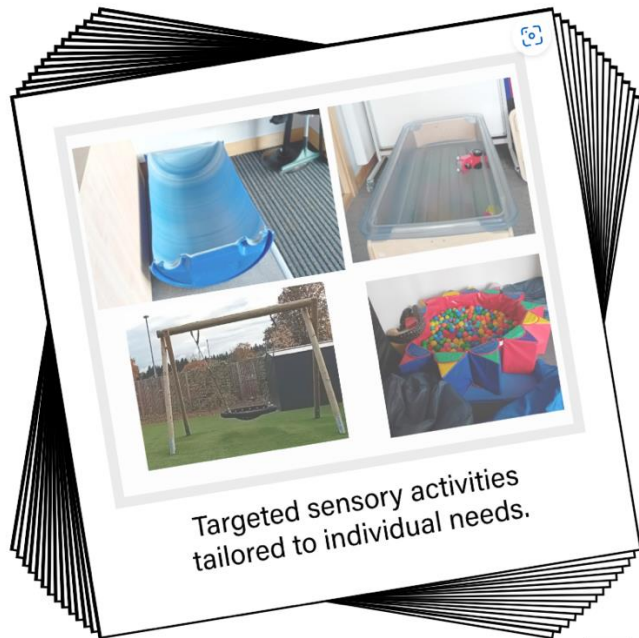
---

Children and young people with a combination of:

- ✓ Cognitive difficulties leading to significant curricular adaptations required, often with a focus on life skills
- ✓ High levels of sensory sensitivities requiring a low stimulus environment
- ✓ High levels of support needed for language, communication and social skills development

# How are young people's needs met?

## Sway providing examples of staged level intervention



### What support needs are targeted?

Significant and complex support needs which require a high level of individual planning, care and support. Most likely this will include significant learning disabilities, and/or physical health needs.



### How are support needs met?

Alongside children, young people and their families, a range of professionals have collected evidence and have carefully explored what is needed. Through a transition panel, it has been agreed that highly individualised planning and delivery of education within a specialist provision/school would best meet the learners needs.



## Intensive



### What is the intended outcome?

The learning provision is tailored to each child's needs and is guided by the Curriculum for Excellence. A tailored curriculum provides opportunities to develop life skills alongside academic skills, to enable children and young people to achieve their full potential.

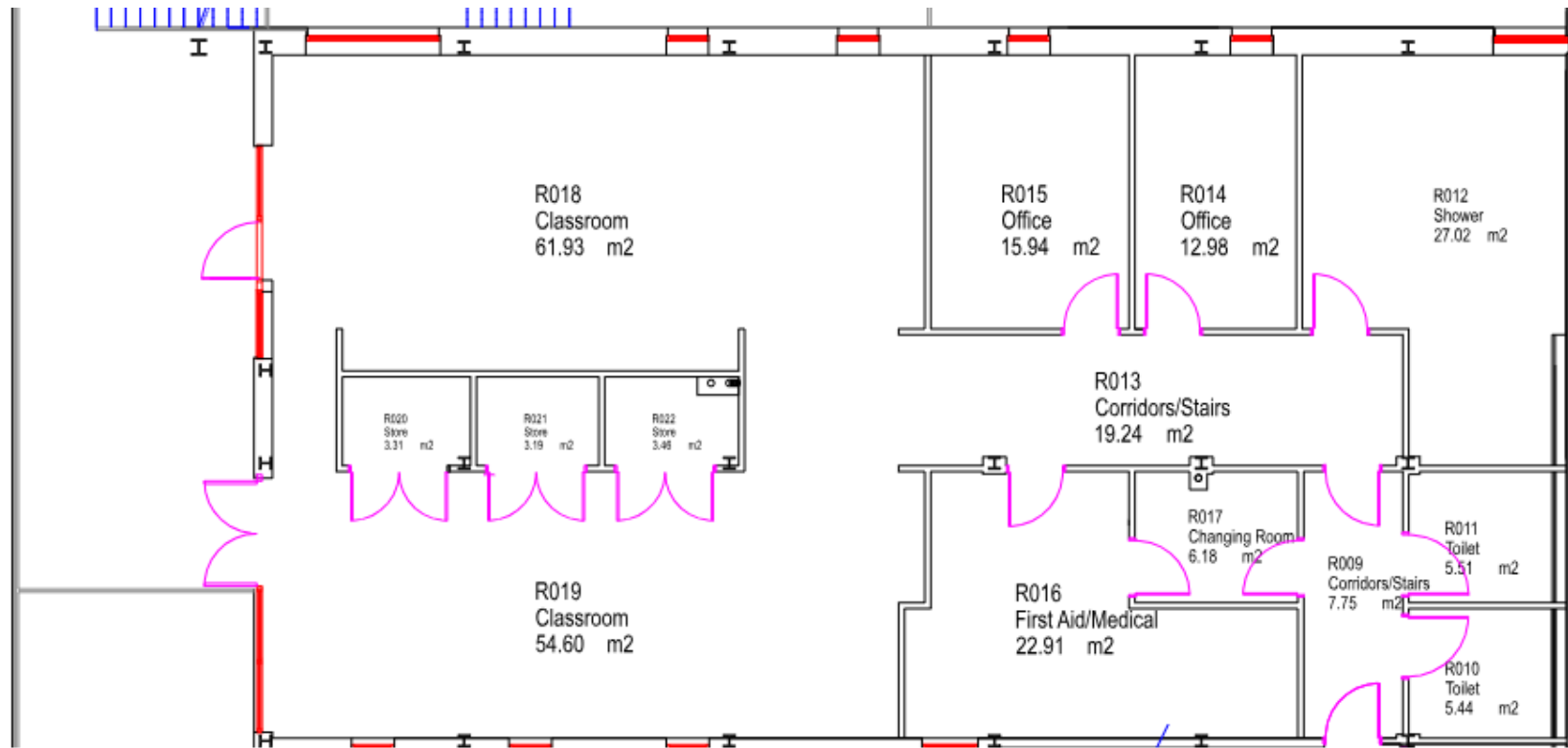
### Who is involved?

At intensive level, professionals from health, social care, and education work collaboratively alongside children, young people and their families. There are different opportunities for children and young people to continue to connect and engage with their mainstream peers.





# ISP Placement within Community School of Auchterarder



- We are looking at how best to accommodate the SFL base provision within the main building and will consider a number of options and consult fully with all staff involved.

# What will the ISP include?



The ISP at Community School of Auchterarder will comprise the following accommodation:

- ASN Classroom 1 – 55m<sup>2</sup>
- ASN Classroom 2 – 55m<sup>2</sup>
- Sensory room – 18m<sup>2</sup> shared with the school
- Lifeskills room – 30m<sup>2</sup> shared with the school
- Personal care/Medical room – 27m<sup>2</sup>
- Outdoor area for children and young people accessing the ISP

# How will the ISP operate?



- The ISP will accommodate up to **16 pupils** with multiple and complex additional support needs.
- This will be **one primary class (8)** and **one secondary class (8)**.
- Pupil allocation follows the Staged Intervention Model. Transition panels have responsibility for decisions.

## How will the ISP be staffed?

---

- A new Principal Teacher (PT) post will be created that will oversee the Intensive Support Provision (ISP).
- Each class will be allocated teaching staff (1 x full time teacher + PT management cover-2 days)
- Each class will have one Pupil Support Assistant (PSA)

# Educational Benefits – the ISP will provide young people with:

---

- access to appropriate education closer to home.
- access to the same school as peers within their secondary school catchment
- access to social and community experiences through their school that help to build stronger community connections within the local community.
- a more efficient and supportive learning experience by reducing the distance travelled to school.



# Statutory Consultation Process

---

- Legal Framework
- Consideration by Learning and Families Committee
- Proposal Paper including Educational Benefits Statement
- Statutory Consultation Period
- Representations from interested parties
- Involvement of Education Scotland
- Preparation of Consultation Report
- Decision by Learning and Families Committee

# More information is available on the [PKC website](#)

## Welcome to Perth and Kinross Council

[Home](#) / [Schools and learning](#) / [School estate reviews](#) / [Current consultations](#)


## Welcome to Perth and Kinross Council

[Home](#) / [Schools and learning](#) / [School estate reviews](#) / [Current consultations](#)

Current consultations <

Proposal and Consultation for an Intensive Support Provision at Perth High School >

Proposal and Consultation for an Intensive Support Provision at Kinross High School >



### Proposal and Consultation for an Intensive Support Provision in Community School of Auchterarder

The Learning and Families Committee on Wednesday 27 August 2025 approved [Report 25/214](#) which proposed to establish a new Intensive Support Provision (ISP) in Community School of Auchterarder. This report presented an [Options Appraisal](#) following an assessment of building capacity.

View our [short video which summarises the purpose](#) of the ISP Statutory Consultation.

As a result, this Committee approved to prepare and publish a [Proposal Paper \(Word doc, 147 KB\)](#) and commence formal consultation on the following proposal:

- To permanently establish a new Intensive Support Provision (ISP) in Community School of Auchterarder for pupils with Additional Support Needs with effect from August 2026.

PKC Chat

A Perth and Kinross where everyone can live life well, free from poverty and inequality



# Questions



# **Thank you for coming to this consultation meeting**